

# RC DRONE INSTRUCTION

Model: MW419

Please read the instruction carefully before usage.

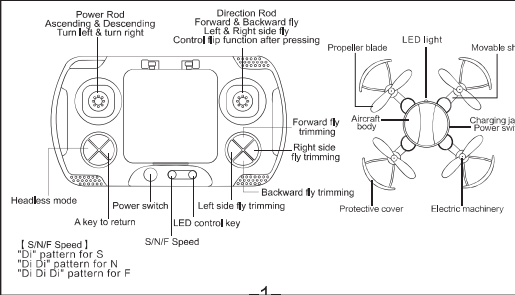
## Notice:

Our products adopt gyroscope technology, It can fly in small space or outdoor. It can meet your desire for flying if the wind is less than level 3. Quadcopter uses 2.4GHz frequency has a long-distance control and operated by several persons at the same time. It has 4 CH functions such as forward, backward, left and right sideward fly, turning left and right. It also can do some special action like 3D rolling. In order to operate the quadcopter easily, please read the instruction carefully before using and return it.

## Safety & Caution

1. Please put the smaller parts of quadcopter at the place where children can't touch, to avoid accidents.
2. The quadcopter has powerful energy, at first flight, you should slowly push left lever. Avoiding quadcopter flies rapidly to cause collisions and damage.
3. After flight, turn off the remote control first then the quadcopter.
4. Do not put the battery in the high temperature, and hot place, such as near the fire or electric heating device.
5. During flight, the aircraft should keep away from the user or others about 2-3 meters. Avoid hit when with the quadcopter lands.
6. Do not let children play alone, children should play under the guidance of adults.
7. Non-rechargeable batteries can not be charged, install batteries with correct polarity and do not mix different types of batteries.
8. When stop flying please turn off the power of transmitter and remove the batteries of quadcopter and transmitter out.
9. The power supply terminal can not be short circuit.
10. Don't look at the light directly because of radiation.

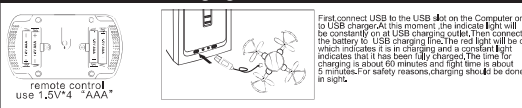
## Transmitter & Quadcopter Introduction



[ S/N/F Speed ]  
 "D" pattern for S  
 "Di" pattern for N  
 "Di Di" pattern for F

1

## Install Batteries & charging instruction

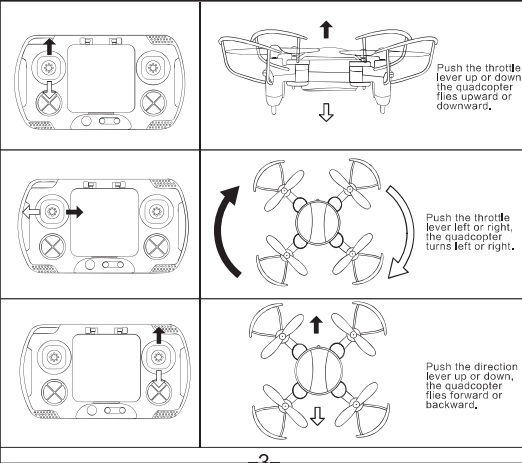


## Flying Preparation (common version)

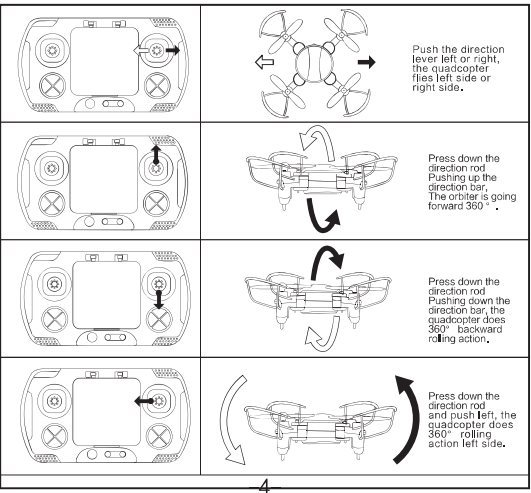
1. Unfold the quadcopter. Clockwise rotate the four wings of quadcopter in turn, stretch the quadcopter to the flying condition, (as pictures showed on the right).
  2. Install the corresponding protection frame to below the wing.
  3. Syncing the quadcopter. Press the power switch to ON and put it on a horizontal position, then turn on the transmitter with "Di" sound the four LED lights of the aircraft flash quickly, push the left rod to the top with "Di" sound and pull it back to the base with "Di" sound, the transmitter and the aircraft's light, keep on they are in the same channel.
  4. Gyroscope calibration. After the completion of the frequency, the vehicle is placed in the horizontal position, and the two rocker will be adjusted to the right, and the gyroscope is calibrated, LED lights flash fast, gyroscope calibration is completed.
- Note:  
 \* Before flying, the quadcopter needs to be calibrated.  
 \* Before flying the quadcopter should be placed on the flat surface to collaborate to ensure stable flying.  
 \* If the quadcopter flies off track, you can adjust it with the remote.  
 \* Low power warning. When the quadcopter is in the low power status, the bottom four LED lights keep flashing slowly. Quadcopter should be stopped flying and be charged.  
 Note: Extreme weather may cause certain influence on the fixed high model, build a stable weather use.

2

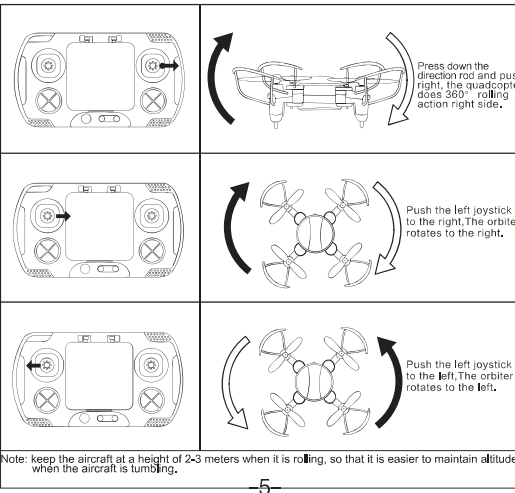
## Instruction



3



4



5

## Headless Mode

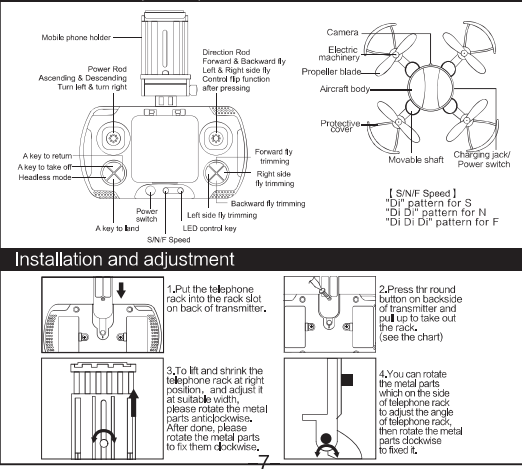
- \* Start and setting: put the quadcopter at a horizontal position or make it hover in the air and confirm the front of quadcopter (green LED light with the transmitter at the same direction ahead of the quadcopter) is the forward direction.
  - \* Exit the headless mode: Press the button of headless mode (the transmitter "Di" indicator light keeps green, quadcopter's diagonal LED light flash means start the headless mode).
  - \* Exit the headless mode: Press the button of headless mode (the transmitter "Di" indicator light is out), Quadcopter's LED lights are on which means exit the headless mode.
- As shown in the above chart, in CF Mode (the bottom four LED lights keeps flashing quickly) No matter where the quadcopter locates (in the front of the frequency after rebot to normal return), Press the button of the rear of the quadcopter. At the time, push the direction lever down, the aircraft will come back, and push the direction lever up, the aircraft will fly far away.

## One key return

- \* Press the button of one key return, the quadcopter will return automatically. You can push the right lever up to correct the channel of return, (in the front of the frequency after rebot to normal return), Press the button of one key return again (the transmitter "Di"), the quadcopter ends return. Or push the right lever up to end return.

6

## Transmitter & Quadcopter Introduction



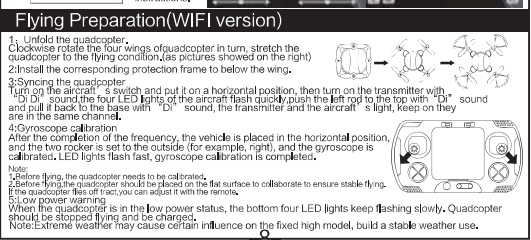
## Installation and adjustment

1. Put the telephone lock into the rack slot on back of transmitter.
2. Press the round button on backside of transmitter and pull up to take out the rack. (see the chart)
3. To lift and shrink the telephone rack at right position, and adjust it at suitable width, please rotate the metal parts anticlockwise. After done, please rotate the metal parts to fix them clockwise.
4. You can rotate the metal parts which on the side of telephone rack to adjust the angle of telephone rack, then rotate the metal parts clockwise to fixed it.

7

## WiFi FPV Instruction

- ### Download APP
1. Open the phone APP store, search GX-FPV to download, or According to the different phone system scan right corresponding two-dimensional code download software.
  2. Open Setting, find the unlocked WiFi (RC-WiFi=855888) of quadcopter and connect (1P1).
  3. Start the APP to enter startup interface, turn on height-locating mode and click "PLAY" to enter control interface. Video display means successful connection.
  4. First click on the "OK" and then click "OK" to complete flight settings.
  5. Click "OK" Start flying.



8

## Attention

- \* Keep a suitable distance from the quadcopter for safety.
- \* Do not look straightly to the lights, they will be laser radiation.
- \* If the transmitter or quadcopter is lack of power, the control distance and height of flying will be affected.
- \* If the quadcopter is broken, please repair it in time. Do not play quadcopter when propellers are damaged.
- \* Please put out the batteries to avoid battery leakage when do not be used for a long time.
- \* Do not let the quadcopter crash at a high altitude, because it will be damaged and the lifetime will be shorter.

Special Note: When the quadcopter fly within 30cm between the ground or the ceiling, the quadcopter becomes unstable because of blades swirl this is "Ground effect" Lower weight, bigger ground effect.

## Notes of Using the Lithium Battery

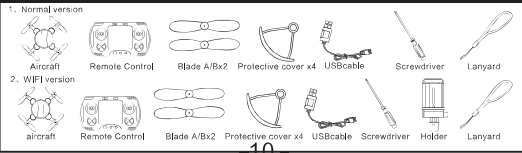
- \* There is certain risk existing when using the lithium battery as it may cause would to your body or cause substantial loss to your property. Please note that the user should take all the responsibility by its own. Manufacturer and sales agent won't take any responsibility on the toy injury or property loss as we can not monitor or control the user's behavior during the process of using the battery (for example: charging, discharging or storage of the battery, etc.).
  - \* If there is any battery leakage happened, please try to avoid the leakage fluid being contacted with the skin or eyes. In case that it has reached the skin, please rinse it with soap and clear water. In the case that it has reached the eyes, please rinse it with massive cold water and go see the doctor immediately.
  - \* If the charger appears suspicious smell, noise or smoker, please unplug it from the power socket immediately. Please strictly following requirement. Otherwise it may cause fire disaster, electric shock or explosion.
- ### Charging
- \* Original special-purpose charge should be required when charging the charging the battery. Damaged charger or any other chargers are highly forbidden to be used.
  - \* Please do not charge the batteries that is swollen, leakage or damaged.
  - \* Please do not overcharge the battery. When batteries are full charged, please unplug the charger and finish charging.
  - \* Please do not charge on the flammable or combustible surface (such as carpet, wooden floor, solid wooden furniture, etc.) or on the electric-conductive surface. You are required to watch carefully the battery and the surface where you need to charge. Please do not re-charge the battery so as to avoid overcharging.
  - \* Please do not charge immediately when the product is just finished using or the battery is still hot enough.
  - \* The charging temperature of the battery should be between 0-40 Celsius degree.

9

## Use and store

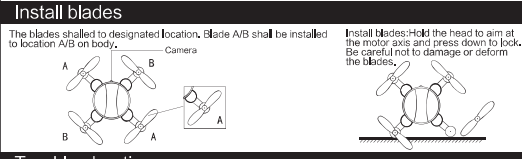
- \* Wrapping the broken or damaged battery by plastic is highly forbidden.
  - \* When starting this equipment, please do not load or remove the battery.
  - \* Please do not cover the battery and avoid excessive physical collision.
  - \* Please do not use the battery if the battery leakage broken or even sending out small is highly forbidden.
  - \* Children are forbidden to touch the battery.
  - \* Please do not throw the battery into the fire. Try to avoid the battery being contacted with the liquid. This equipment is forbidden to be put in the trash.
  - \* Not dose it to be placed in the moisture area. Please do not put the batter into the microwave or pressure tank.
  - \* Please do not disassemble, drill or transform or cut the battery as the battery or charge can not sustain the heavy object. Striking the battery is highly forbidden.
  - \* Please do not use any solvents, industrial-purpose alcohol in any other flammable solvents to clean the charge that is prevent from being short-circuited. Please avoid being contacted by the electrolyte substance in the battery as electrolyte substance and electrolyte steam dose great harm to the human body.
  - \* Please store this equipment under the normal room temperature. Please do not put this equipment under extreme temperature. Try it avoid storing or on the place where temperature has substantial change.
  - \* Please do not place this product near the heat source.
  - \* Please remove the batteries if you do not use it.
  - \* This equipment is composed of electronic component and battery. Regarding the electronic trash, please dispose in accordance with special regulation.
  - \* Please be familiar with the way the local trash is centralized and disposed.
- ### Recycle
- \* Please do not treat this equipment as the daily trash. Battery that is damaged or can not be used should be put into the special-purpose container.
  - \* This equipment is composed of electronic component and battery. Regarding the electronic trash, please dispose in accordance with special regulation.
  - \* Please be familiar with the way the local trash is centralized and disposed.

## List of accessories



10

## Flying environment



## Trouble shooting

1. Transmitter and quadcopter not bland. Solution: 1) To ensure that the frequency of success, Re frequency. 2) Battery power shortage, replace the battery. 3) To confirm that the remote control is not the original match.
2. Unable to flip. Solution: 1) Press Function combination button, change to flip mode. 2) Check if L+R power is too low and need to be recharged. 3) The quadcopter is shaking with noise.
3. Solution: 1) Check blade if deformation or not, replacement new blades. 2) Off the quadcopter power and restart. 3) Put the quadcopter in the horizontal place, and recalibrate the gyroscope.
4. Cannot take off. Solution: 1) Wrong installation of the blade, Make sure the blade placed on the right motor. 2) Check quadcopter canopy if loose or not. Block blades flying. 3) Check quadcopter battery is power full. If the low power, quadcopter canopy inner light will be alternately flashing.

11

**FCC Statement:**

This equipment has been tested and found to comply with the limits for a Class B digital device, pursuant to part 15 of the FCC Rules. These limits are designed to provide reasonable protection against harmful interference in a residential installation. This equipment generates, uses and can radiate radio frequency energy and, if not installed and used in accordance with the instructions, may cause harmful interference to radio communications. However, there is no guarantee that interference will not occur in a particular installation. If this equipment does cause harmful interference to radio or television reception, which can be determined by turning the equipment off and on, the user is encouraged to try to correct the interference by one or more of the following measures:

- Reorient or relocate the receiving antenna.
- Increase the separation between the equipment and receiver.
- Connect the equipment into an outlet on a circuit different from that to which the receiver is connected.
- Consult the dealer or an experienced radio/TV technician for help.

Caution: Any changes or modifications to this device not explicitly approved by manufacturer could void your authority to operate this equipment.

This device complies with part 15 of the FCC Rules. Operation is subject to the following two conditions: (1) This device may not cause harmful interference, and (2) this device must accept any interference received, including interference that may cause undesired operation.

The device has been evaluated to meet general RF exposure requirement. The device can be used in portable exposure condition without restriction.