

tech toys

AERODRONE

Microquad Wireless Indoor Quadcopter

FOR AGE
14+

786764



INSTRUCTION MANUAL

Please read all instructions carefully and retain for future use

Note: Physical damage to the product or its parts, caused due to operational reasons is not covered in the warranty. Manufactures/distributors/retailers are not responsible and/or liable for any damage or loss of property caused due to use of this product.

Welcome!
Thank you for purchasing Microquad Wireless Indoor Quadcopter. Please store this manual in a safe place for future reference.

GETTING STARTED

- Remove the product from the box.
- Please read all instructions and retain all packaging until you have checked and counted all of the parts.

PACKAGE CONTENTS

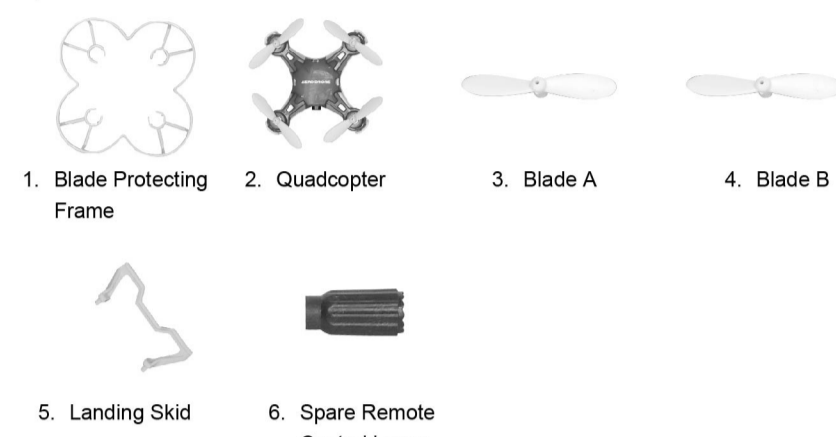
- Microquad Wireless Indoor Quadcopter
- Remote Controller (with built-in case for quadcopter)
- USB Charging Cable (to charge the quadcopter)

LOCATED IN THE COMPARTMENT AT THE BACK OF REMOTE CONTROL

- Built-in Charging Cable
- Blade protecting Frame
- Spare pairs of blades A & B
- Spare Landing Skids
- 2 spare Remote Control Levers
- Lanyard for Remote Control
- Instruction Manual

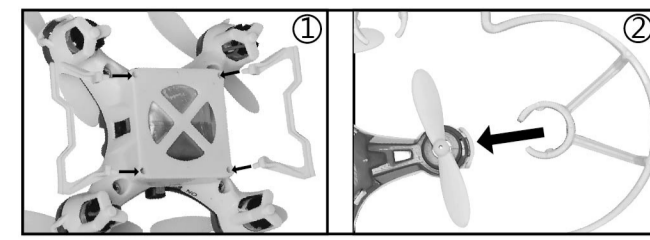
DESCRIPTION OF PARTS

QUADCOPTER



Installing Landing Skids & Blade Protecting Frame

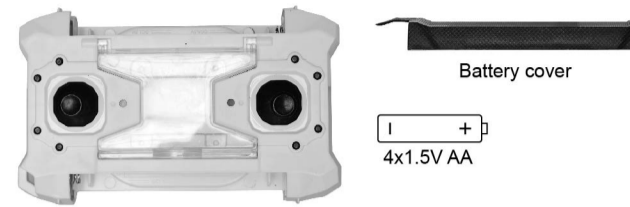
Install the Landing Skids & Blade Protecting Frame as shown in images below.



REMOTE CONTROLLER

Battery installation on the Remote Controller

- Remote Controller requires 4 x AA Batteries (not included).
- Use a Phillips screwdriver to open battery covers located on front and back of the remote control.
- Install 2 "AA" batteries (not included) in each of two battery compartments, then replace the battery covers and re-install the screws.



Notice:

- Do not mix different types of batteries.
- Do not mix old and new batteries.
- Install batteries as per indicated polarity.

Charging of the Quadcopter:

Your Quadcopter can be charged through one of the two ways:

- USB Charging Cable (included)
- Built-in Charging Cable (located in the compartment at the back of the Remote Control)

USB Charging

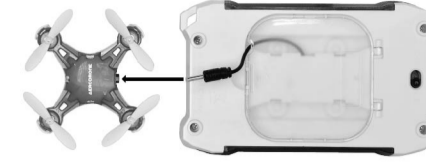
- Inserting the USB charging cable's plug into a computer USB port, connect the other end to the charging port of the Quadcopter.
- The Red LED light on the USB will turn off while charging. After the battery is fully charged, the Red LED light will turn on. Charging time is approximately 35 minutes.



- Flying time is about 5 - 7 minutes. Actual fly time is subject to individual handling and flying conditions.

Charging through the Built-in Cable

- Take the charging cable from the compartment located at the back of the remote control, and connect it with the charging port of the Quadcopter.
- Green LED light on the remote control turns on while charging. After the battery is fully charged, the Green LED light turns OFF. Charging time is around 35 minutes.



- Flying time is about 5 - 7 minutes. Actual fly time is subject to individual handling and flying conditions.

Note: Battery life / Flying time may vary depending on flying conditions, handling, control range etc.

Caution:

- If the Quadcopter needs to be recharged, allow 10-15 minutes for the unit to cool down before recharging.
- Do not overcharge the battery.
- If the battery becomes too hot while charging, then remove it from charging immediately and allow it to cool down.
- Do not connect the battery to an electrical outlet.

SUITABLE FLYING CONDITIONS

- Places with no / limited obstacles are recommended.
- Do not fly your Quadcopter in strong winds, as it may affect the remote-control system and interfere with your control leading to a crash or damage to the unit.
- Do not fly in rain/damp conditions.
- Flies best, indoors.

Caution:

- Never allow young children to use this product alone.
- Parental guidance and supervision is highly recommended during the use of this product.
- DO NOT operate your Quadcopter if someone else is operating a similar device in the same operating range, as it may interfere with the frequency range and impact the controlling capacity of the Quadcopter.

PREPARE FOR TAKE OFF

- Turn on the Quadcopter.
- Place the Quadcopter on a flat surface.
- Recheck the area to make sure it is clear from people, pets, trees, buildings, high voltage wires, and other obstructions.

- Turn on the remote controller (refer to "Quadcopter control modes & instructions" section for choosing between Mode 1 or 2).

- In order to sync the Remote Control with the Quadcopter, push the remote controller throttle all the way up, and then pull it back all the way down to its original position.

- The LEDs on the Quadcopter will flash for a few seconds and then stay on without blinking. This indicates that Remote Control and Quadcopters have synced successfully.
- Gently push the throttle upward to initiate take off.

Note: If Quadcopter spins or deviates excessively in a specific direction, please refer to "Fine-tuning operation" section of this manual.

Caution: Always turn OFF the controller before you turn off the Quadcopter. Do not apply full power on the throttle while taking off as it may lead to a quick ascend which may cause injury.

REMOTE CONTROL

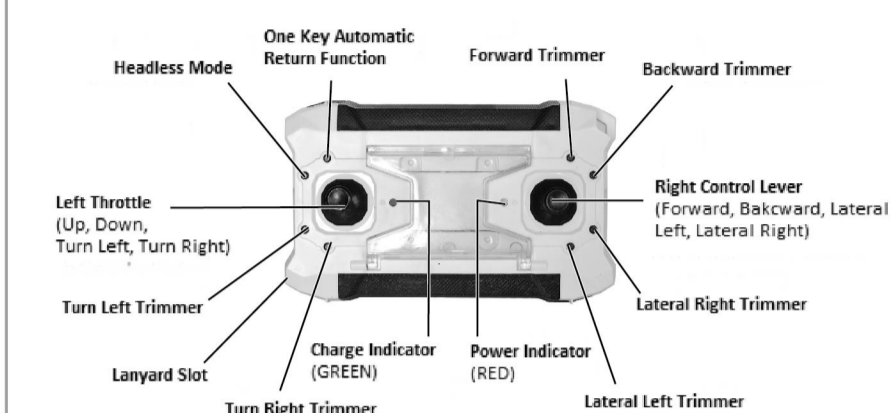
The Remote Control has 2 modes built-in. Difference between Mode 1 and Mode 2 is that functions of the buttons flip. This is mainly to offer convenience to both right handed and left handed users. Every time remote control is turned on, it starts in Mode 1 by default.

In order to switch to Mode 2, Perform the following steps:

- Ensure that both, Quadcopter and Remote Control are turned off.
- Push the left throttle stick little upward to bring it in the center, and press it downward to hear a click sound. Without releasing the button, turn on the remote control.
- You'll hear a beep confirming that the remote has been switched to Mode 2.
- Ascend (take off) and descend (landing) controls will remain on the same throttle stick. However the function of the throttle stick will reverse. Hence you can now choose to flip the remote control and have the throttle stick on your right.
- At this point, turn on the quadcopter.

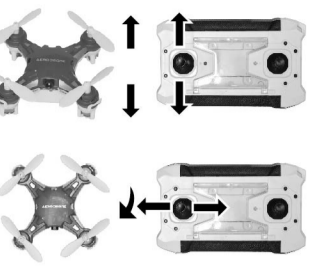
Note: Every time the remote is turned on, it starts in Mode 1 by default.

Mode 1 (Default)



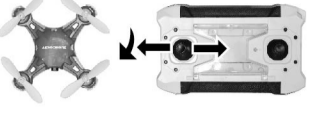
Up or Down

Push the Left Throttle up or down, the Quadcopter flies upward or downward.



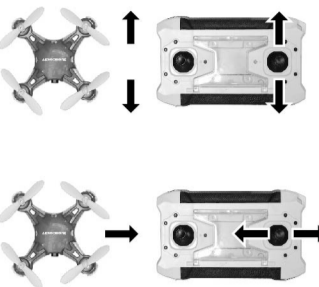
Turn Left or Right

Push the Left Throttle left or right, the Quadcopter turns left or right.



Fly Forward or Backward

Push the Right Control Lever up or down, the Quadcopter flies forward or backward.



Fly Left or Right (Laterally)

Push the Right Control Lever left or right, the Quadcopter flies left or right.



Fine-tuning (Trimming) Operation

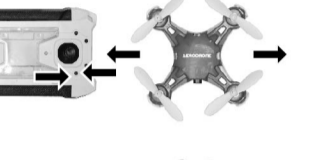
If the Quadcopter deviates or flies away in a specific direction excessively, you can correct it by pressing the Trimmer button of the exact opposite direction.

For example, if the quadcopter is flying excessively backward, press the Forward Trimmer button to correct it.

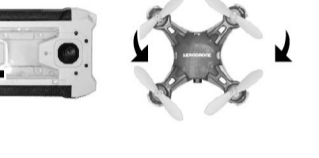
If the Quadcopter flies forward or backward excessively, you can correct it by pressing Backward / Forward Trimmer, respectively.



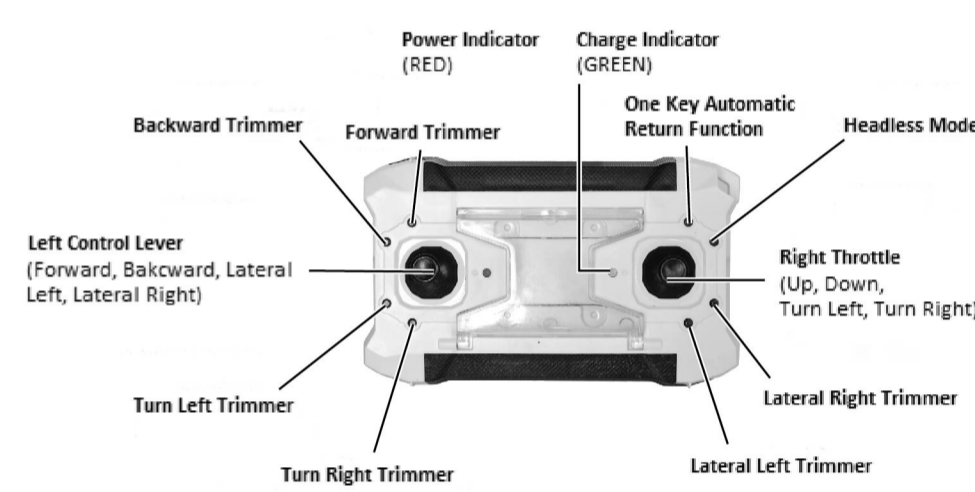
If the Quadcopter deviates to left or right, you can correct it by pressing Lateral Right / Left trimmer, respectively.



If the Quadcopter spins left or right excessively, you can correct it by pressing Turn Right / Left trimmer, respectively.

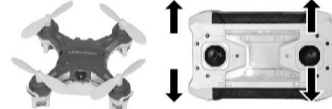


Mode 2



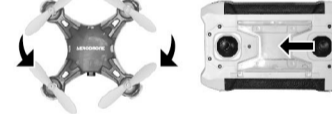
Up or Down

Push the Right Throttle up or down, the Quadcopter flies upward or downward.



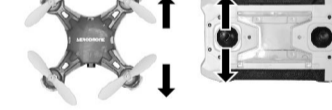
Turn Left or Right

Push the Right Throttle left or right, the Quadcopter turns left or right.



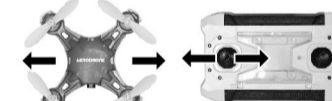
Fly Forward or Backward

Push the Left Control Lever up or down, the Quadcopter flies forward or backward.



Fly Left or Right (Laterally)

Push the Left Control Lever left or right the Quadcopter flies left or right.



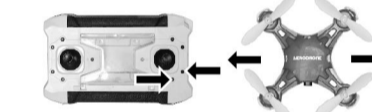
Fine-tuning operation

If the Quadcopter deviates or flies away in a specific direction excessively, you can correct it by pressing the Trimmer button of the exact opposite direction.

For example, if the quadcopter is flying excessively backward, press the Forward Trimmer button to correct it.



If the Quadcopter flies forward or backward excessively, you can correct it by pressing Backward / Forward Trimmer, respectively.



If the Quadcopter deviates to left or right, you can correct it by pressing Lateral Right / Left trimmer, respectively.



If the Quadcopter spins left or right excessively, you can correct it by pressing Turn Right / Left trimmer, respectively.

Speed Select

The default speed is low. You can switch to higher speed by pressing the Throttle in the middle once. You can bring it back to lower speed by pressing it again.

360 Degree Flip

You can take your excitement to the next level, once you've mastered the basic controls of this Quadcopter. Firstly, ensure that Quadcopter is flying no less than 10 feet high, press the Control Lever in the middle and quickly push it forward, for a forward 360° flip. Similarly, push the Control Lever right, left, backward for right, left, backward 360° flip.

Headless Mode

Headless Mode means that the quadcopter's direction of flight is seen from your viewpoint regardless of the direction quadcopter is pointing in.

Press the Headless Mode button once to initiate the Headless Mode flight. Remote Controller constantly beeps as long as you are flying in Headless mode.

Press the Headless Mode button again to exit from Headless Mode. Remote Controller will stop beeping when you exit the Headless Mode.

One Key Automatic Return Function

When the Quadcopter flies too far, you can get it back by one Key Automatic Return function

In normal flight, pressing the One Key Automatic Return button brings the Quadcopter back automatically.

TROUBLESHOOTING

Problem	Possible Cause	Solution
The controller indicator doesn't work	Batteries installed with incorrect polarity. Batteries are drained.	Check and see that the batteries are installed as per correct polarity. Install new batteries.
No control	Windy Environment The Quadcopter does not respond appropriately.	Do not fly in windy environment. It will limit or disturb your flying control. Push the throttle stick upward, and then pull it back in to the original position.
Quadcopter doesn't fly high enough	Rotor speed is too slow. Quadcopter is not fully charged.	In Mode 1, push the left stick (throttle stick) upward, or in Mode 2, push the right stick (throttle stick) upward. Fully charge your Quadcopter.
Rattling Noise from the Quadcopter	The Blade Protective Frame has come off the Quadcopter.	Sometimes when the quadcopter crashes into a wall, its Blade Protective Frame might come off. Affix the Protective Frame securely again.

If you need additional support, please contact Midwest Trading Group Customer Service at info@mtradinggroup.com or by calling 1 (866) 815-4714.

ADDITIONAL INFORMATION:

- The control distance will get shortened when the Quadcopter is under low power condition.
- Windy environment may reduce the remote controlling capacity.
- Following practices can help enhance Quadcopter's performance:
 - If the Quadcopter doesn't fly high enough, stop flying and unplug the battery.
 - If the Quadcopter has not been used for a long period of time, fully charge the batteries before flying the Quadcopter.
 - If the Quadcopter gets damaged or deformed, refrain from using it until fully repaired.
 - If you don't intend to use the remote control for a long time, remove all batteries, in order to avoid battery leakage from damaging this device.
- Hard crashes and/or falls of the Quadcopter can lead to irreparable damage and/or shorten Quadcopter's life.

WARNING

- You are responsible for the using of the quadcopter with necessary precautions to ensure that it doesn't harm or cause any injury to anyone or damage to any property.
- When you assemble and fly the quadcopter, you must operate it accordingly to the instruction manual.
- The user is responsible completely for correct operation and use of this product. Manufacturers and dealer accept no responsibility and / or liability for damage and loss caused due to use of this item.
- Not recommended for child under 14 years of age.

CARE AND MAINTENANCE

- Clean the unit with a soft, damp cloth. Never use chemicals or hard abrasives.
- Keep this unit away from wet or damp surroundings.
- The crossed out wheeled bin symbol on this item indicates that this product needs to be disposed of in an environmentally friendly way when it becomes of no further use or has worn out. Contact your local authorities for details of where to take the item for re-cycling.
- Do not dispose of batteries in a fire. They may explode.
- Do not dispose of battery packs in a fire, throw them in a trash receptacle. They need to be disposed of in an environmentally friendly way when it becomes of no further use. Contact your local authorities for details of where to take them for re-cycling.

FCC INSTRUCTIONS

Changes or modifications not expressly approved by the party responsible for compliance could void the user's authority to operate the product.

NOTE: This product has been tested and found to comply with the limits for a Class B digital device, pursuant to Part 15 of the FCC Rules. These limits are designed to provide reasonable protection against harmful interference in a residential installation. This product generates, uses and can radiate radio frequency energy and, if not installed and used in accordance with the instructions, may cause harmful interference to radio communications. However, there is no guarantee that interference will not occur in a particular installation. If the product does cause harmful interference to radio or television reception, which can be determined by turning the equipment off and on, the user is encouraged to try to correct the interference by one or more of the following measures:

- Reorient or relocate the receiving antenna.
- Increase the separation between the product and receiver.
- Connect the product into an outlet on a circuit different from that to which the receiver is connected.
- Consult the dealer or an experienced radio/TV technician for help.

The device complies with Part 15 of the FCC Rules. Operation is subject to the following two conditions: (1) this device may not cause harmful interference, and (2) this device must accept any interference received, including interference that may cause undesired operation.

The device has been evaluated to meet general RF exposure requirement. The device can be used in portable exposure condition without restriction.

LIMITED WARRANTY

This manufacturer's product warranty extends to the original consumer purchaser of the product. Neither the retailer nor any other company involved in the sale or promotion of this product is a co-warrantor of this manufacturer warranty.

WARRANTY DURATION: All materials and workmanship are warranted to the original consumer purchaser for a period of thirty (30) days from the original purchase date.

WARRANTY COVERAGE: This product is warranted against defective materials or workmanship. This warranty is void if the product has been damaged by accident, in shipment, unreasonable use, misuse, neglect, improper service, commercial use, repairs by unauthorized personnel or other causes not arising out of defects in materials or workmanship. This warranty doesn't cover the following which may be supplied with this product, including but not limited to: LCD Screens, glass parts, lenses, etc. This warranty is effective only if the product is purchased and operated in USA, and does not extend to any units which have been used in violation of written instructions furnished by manufacturer or to units which have been altered or modified or, to damaged products or parts thereof which have had the serial number removed, altered, defaced or rendered illegible.

WARRANTY DISCLAIMERS: This warranty is in lieu of all warranties expressed or implied and no representative or person is authorized to assume for manufacturer any other liability in connection with the sale of our products. There shall be no claims for defects or failure under any theory of tort, contractor commercial law including but not limited to, negligence, gross negligence, strict liability, breach of warranty and breach of contract. Under no circumstances will Manufacturer's / Distributor's maximum liability exceed the retail value of the product.

WARRANTY PERFORMANCE: During the above 30 day warranty period, a product with a defect will be either repaired or replaced with a reconditioned comparable model (at manufacturer's option). The repaired or replacement product will be in warranty for the balance of the 30 day warranty period and an additional one-month period. No charge will be applicable for such repair or replacement.

SERVICE AND REPAIR: If service is required for this product, you should first contact Midwest Trading Group Customer Service at info@mtradinggroup.com or by calling 1 (866) 815-4714, Monday to Friday to 6pm EST.

NOTE: Manufacturer cannot assume responsibility for loss or damage during incoming shipment. As a precautionary measure, carefully package the product for shipment, and insure it with the carrier. Be sure to enclose the following details with the product: your full name, return address and daytime phone number, a note describing the problem you experienced, a copy of your sales receipt or other proof of purchase to determine warranty status. C.O.D. shipments cannot be accepted.