

CS-422B Bluetooth Gamepad Manual



1、INTRODUCTION:

This gamepad is P4 BT Wireless Controller 3rd Edition, suitable for PS4 console, compatible with PS4 Bluetooth wireless specification. Corresponding to 4 analog axes, 2 analog buttons and 16 digital keys, 2-Points Touch Pad, RGB Light Bar, Big and Small Vibration, 6-axis Motion Sensor, Mono Speaker, Headset Jack, and supports PC under wired connection, Wireless pairing function.

2、PRODUCT DESCRIPTION:

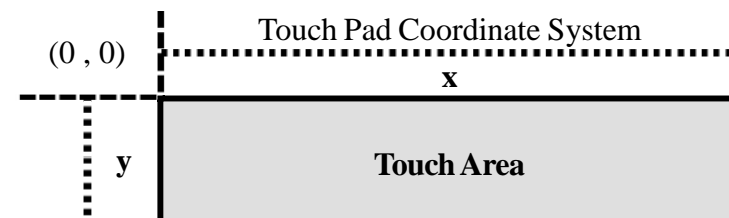
- 2.1 Support Bluetooth wireless connection (Bluetooth 4.2+EDR Specification)。
- 2.2 Support USB wired pairing (USB 1.1 or USB 2.0, Micro B)
- 2.3 Button&Stick (Digital button*16, analog button*2, analog axis 4, analog resolution is 256 steps)

Button	Digital/Analog	Button	Digital/Analog
PS	D	Up	D
OPTION	D	Down	D
SHARE	D	L1	D
L3	D	L2	D/A(0 to 255)
R3	D	R1	D
Circle	D	R2	D/A(0 to 255)
Cross	D	Touch Key	D

Triangle	D	Left Stick (x-axis)	A(0 to 255, center:128)
Square	D	Left Stick (y-axis)	A(0 to 255, center:128)
Right	D	Right Stick (x-axis)	A(0 to 255, center:128)
Left	D	Right Stick (y-axis)	A(0 to 255, center:128)

2.4 Touch Pad (Capacitive touchpad capable of supporting 2 input points at the same time)

SPEC.	Value Range
Number of Detectable Touch Points	2
Pressure-sensitive Format	Capacitance
X-axis Touch Coordinate Range	0 to 1919
Y-axis Touch Coordinate Range	0 to 941



2.5 Light Bar (Status light bar, composed of 3 colors RGB LED, each color brightness is divided into 256 levels)

LED	Value Range
Red	0:off, 1 to 255 : On
Green	
Blue	

In the main screen of PS4 console, the color status of each gamepad:

Gamepad 1: Blue(64)、Gamepad 2: Red(64)、Gamepad 3: Green(64)、Gamepad 4: Purple(Red=64、 Blue=64)。

2.6 Vibration

Built-in 2 vibration motors, the left side of the gamepad is a large motor, and the right side is a small motor. Each vibration level can be divided into 256 steps

Motor	Value Range
Small (Right Side)	0:stop, 1 to 255 : rotate
Large (Left Side)	

2.7 Motion Sensor

Motion sensors, respectively for acceleration and angular velocity sensing, each with 3 direction axes, each direction axis resolution 65536 steps

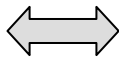
Sensor	Value Range
Acceleration ± 4 G	X-axis
	Y-axis
	Z-axis
Angular Velocity (Gyro) ± 2000 dps	X-axis
	Y-axis
	Z-axis

-32768↔0000↔32767
0G : 0 、 ±1G : ±8192

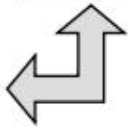
-32768↔0000↔32767
(When still : 0)



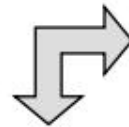
Acceleration	
X	0G
Y	+1G
Z	0G



Acceleration	
X	0G
Y	-1G
Z	0G



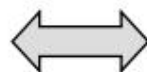
Acceleration	
X	+1G
Y	0G
Z	0G



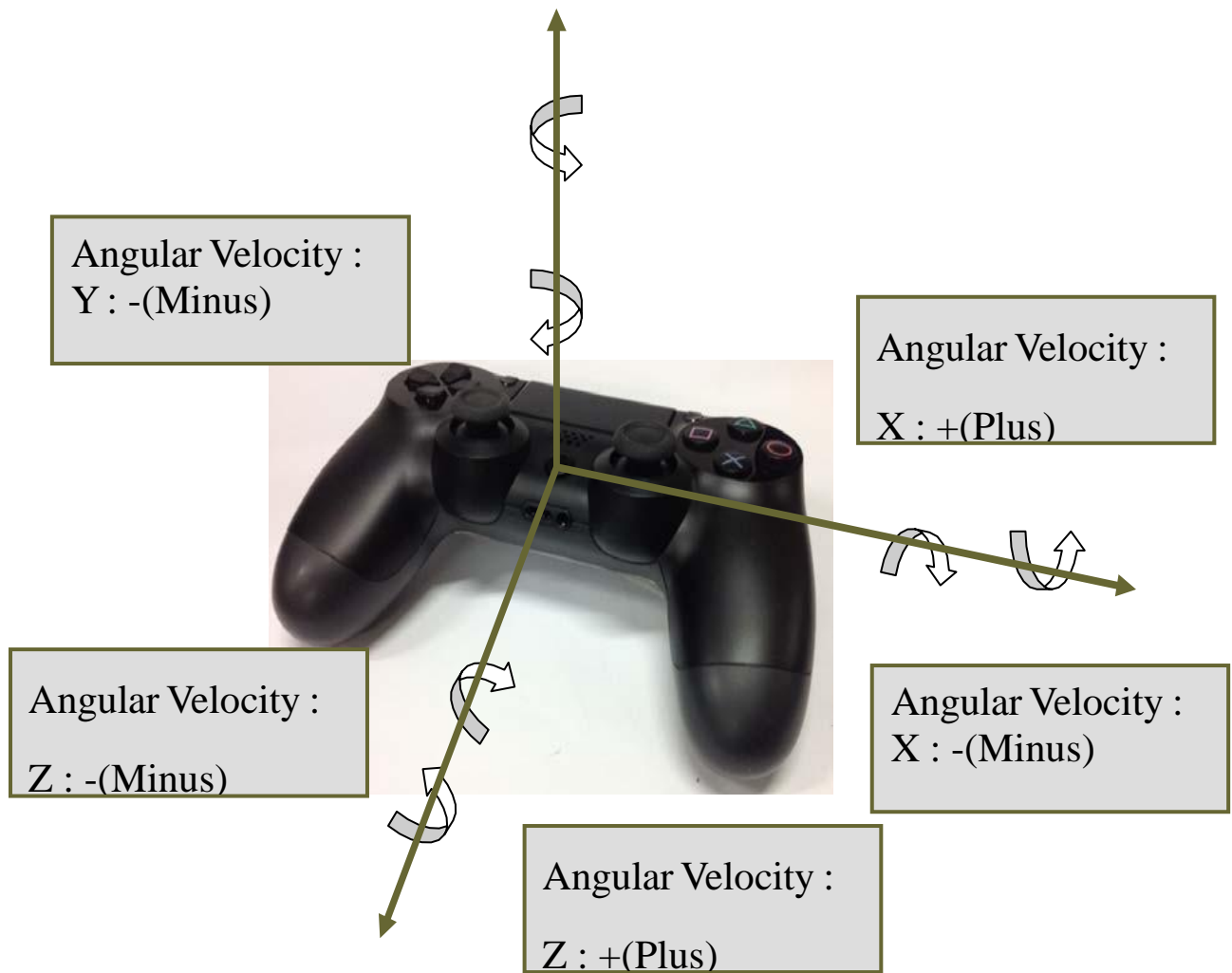
Acceleration	
X	-1G
Y	0G
Z	0G



Acceleration	
X	0G
Y	0G
Z	-1G



Acceleration	
X	0G
Y	0G
Z	+1G



2.8 Audio Feature

Built-in mono speaker, stereo headset jack

Audio	Spec.
Speaker	Built-in, Mono
Headset Jack	Support Stereo Headset、Microphone

2.9 Power

Battery capacity: 3.7V/600MAh Lithium battery

Type	Voltage (± 0.1 V)
Lithium-ion rechargeable battery	DC 3.6V to DC4.2V
Full power	DC3.9 to DC 4.2V
2 bars of power	DC3.7 to DC 3.9V
1 bars of power	DC3.6 to DC 3.7V
No power	Under DC3.6V
Hibernation	Under DC3.55V

3、 CONNECTION DESCRIPTION:

- 1、 Wired pairing method: Use the Micro-USB cable to connect to PS4 console to complete the pairing. After the pairing is completed, press the PS button to connect wirelessly.
2. Wireless pairing mode: In the dormant state of gamepad, press SHARE button, and then press PS button for about 2 seconds, and observe that the LED light bar starts to flash twice at an interval of white light to enter the pairing mode. Then the device of PS4 gamepad performs Bluetooth search and pairing.

4、 PRODUCT TECHNICAL SPECIFICATIONS:

- 1、 **Operating voltage: DC3.6-4.2V**
- 2、 **Operating current: 55MA**
- 3、 **Motor current: 80-100MA**
- 4、 **Sleep current: 0**
- 5、 **Battery capacity: 600MAH**
- 6、 **Charging voltage: Below 300MA**
- 7、 **Charging time: About 3 hours**
- 8、 **Use time: about 8 H; when the motor is vibrating, about 4 H.**

This device complies with part 15 of the FCC Rules. Operation is subject to the following two conditions: (1) This device may not cause harmful interference, and (2) this device must accept any interference received, including interference that may cause undesired operation.

Any Changes or modifications not expressly approved by the party responsible for compliance could void the user's authority to operate the equipment.

Note: This equipment has been tested and found to comply with the limits for a Class B digital device, pursuant to part 15 of the FCC Rules. These limits are designed to provide reasonable protection against harmful interference in a residential installation. This equipment generates uses and can radiate radio frequency energy and, if not installed and used in accordance with the instructions, may cause harmful interference to radio communications. However, there is no guarantee that interference will not occur in a particular installation. If this equipment does cause harmful interference to radio or television reception, which can be determined by turning the equipment off and on, the user is encouraged to try to correct the interference by one or more of the following measures:

- Reorient or relocate the receiving antenna.
- Increase the separation between the equipment and receiver.
- Connect the equipment into an outlet on a circuit different from that to which the receiver is connected.
- Consult the dealer or an experienced radio/TV technician for help.