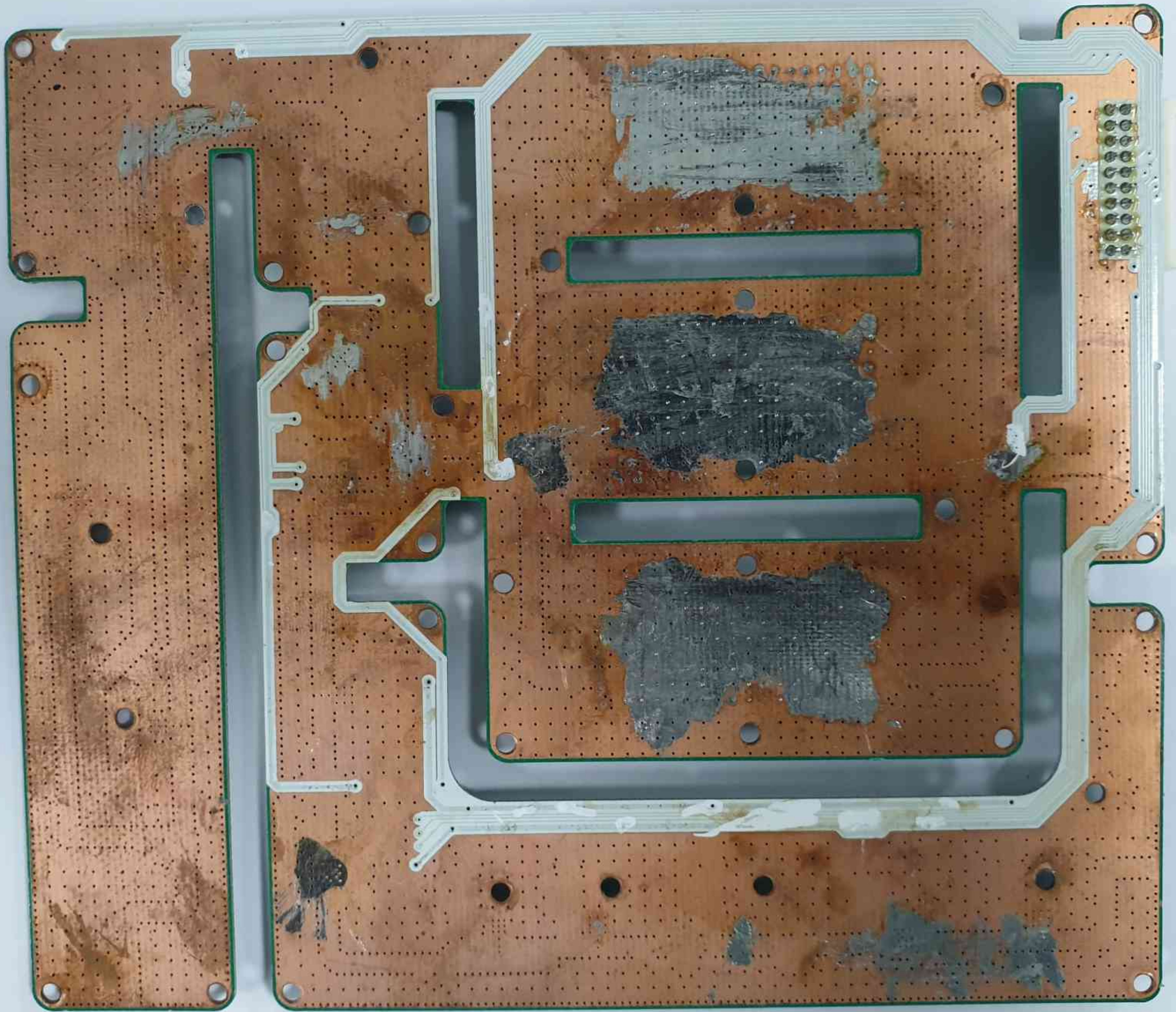
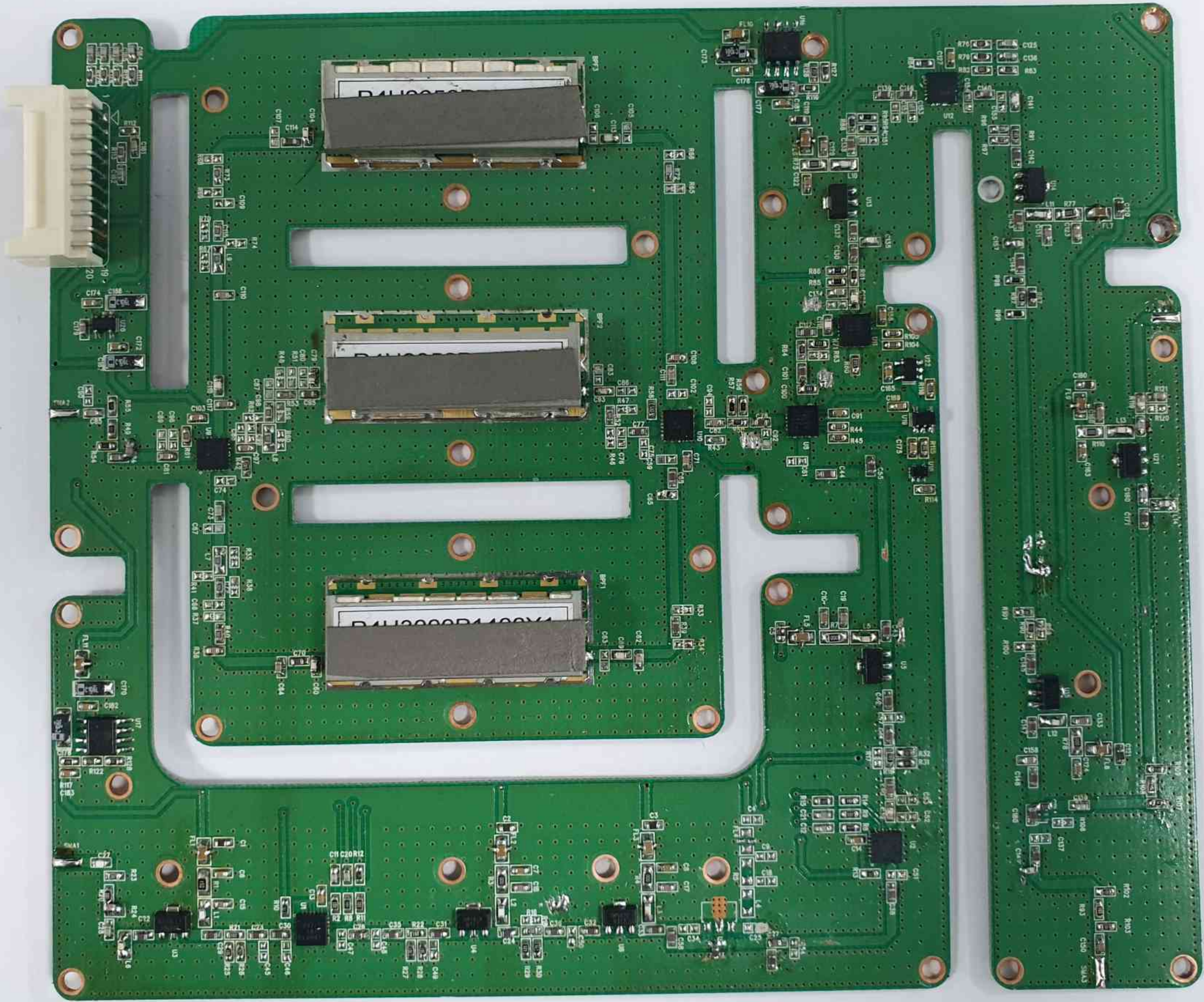




39G Sample #2









DL OUT

UL IN

MDIU (SISO)

IN/OUT

CPL

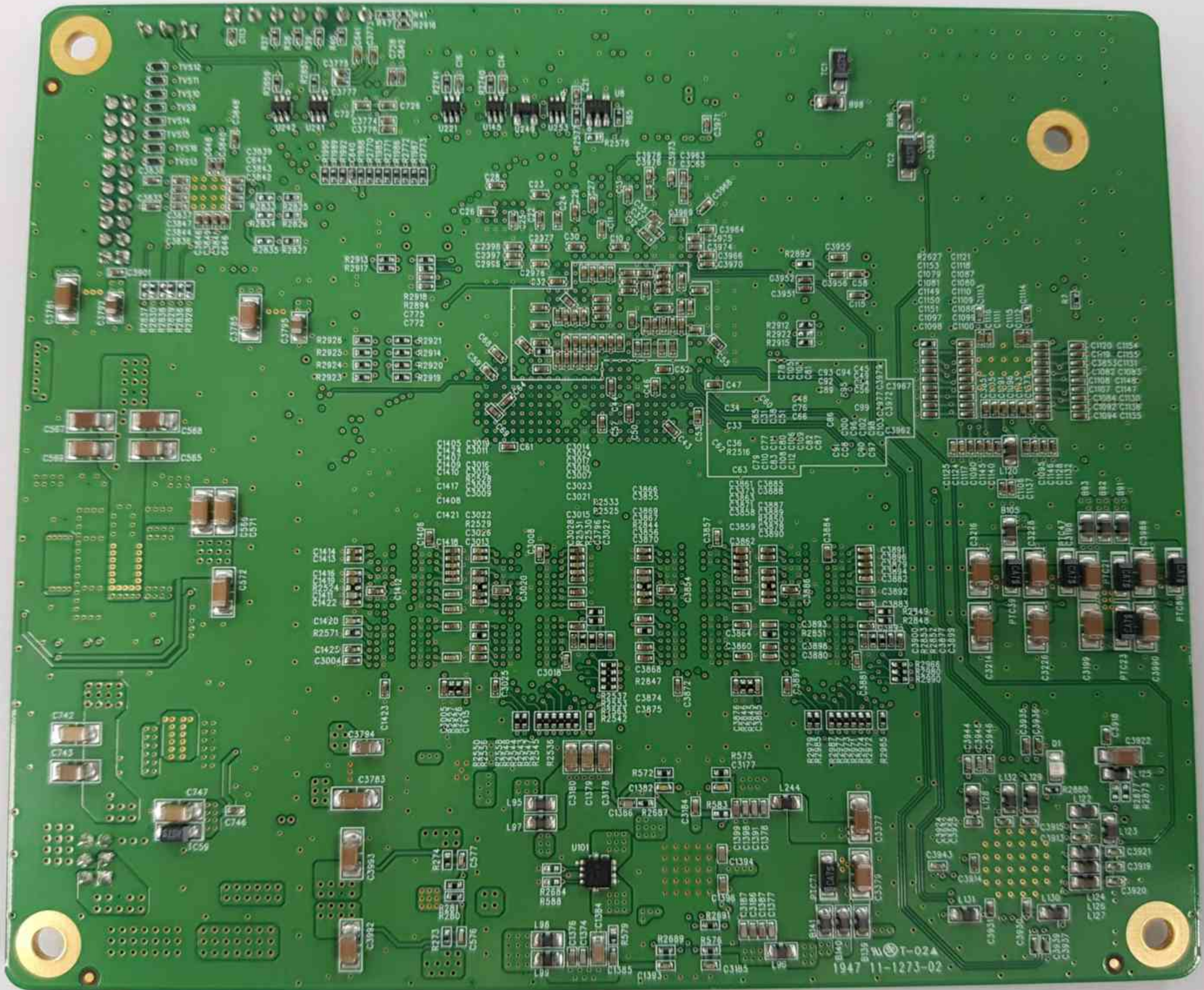
300707A







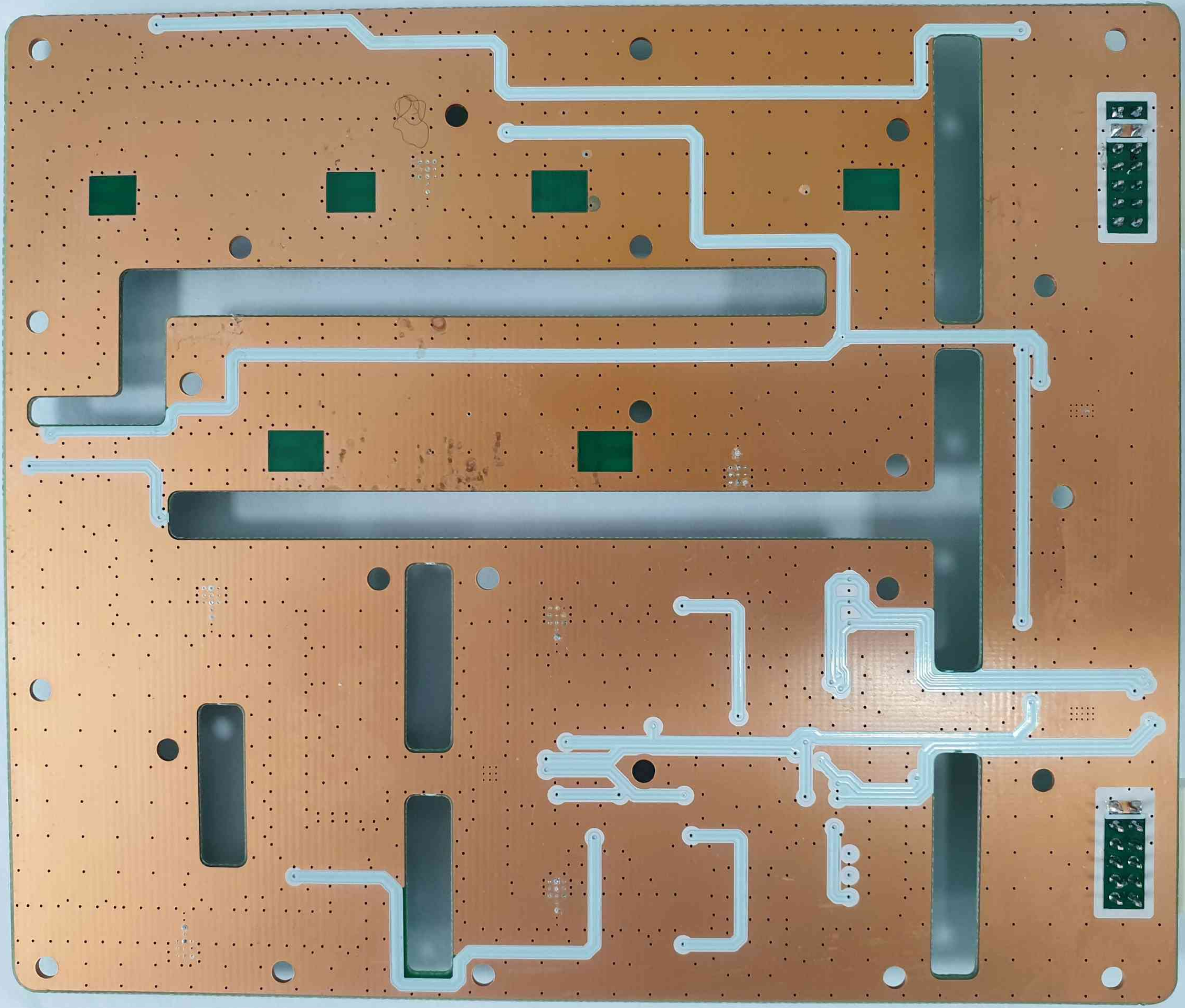
39G Sample #4

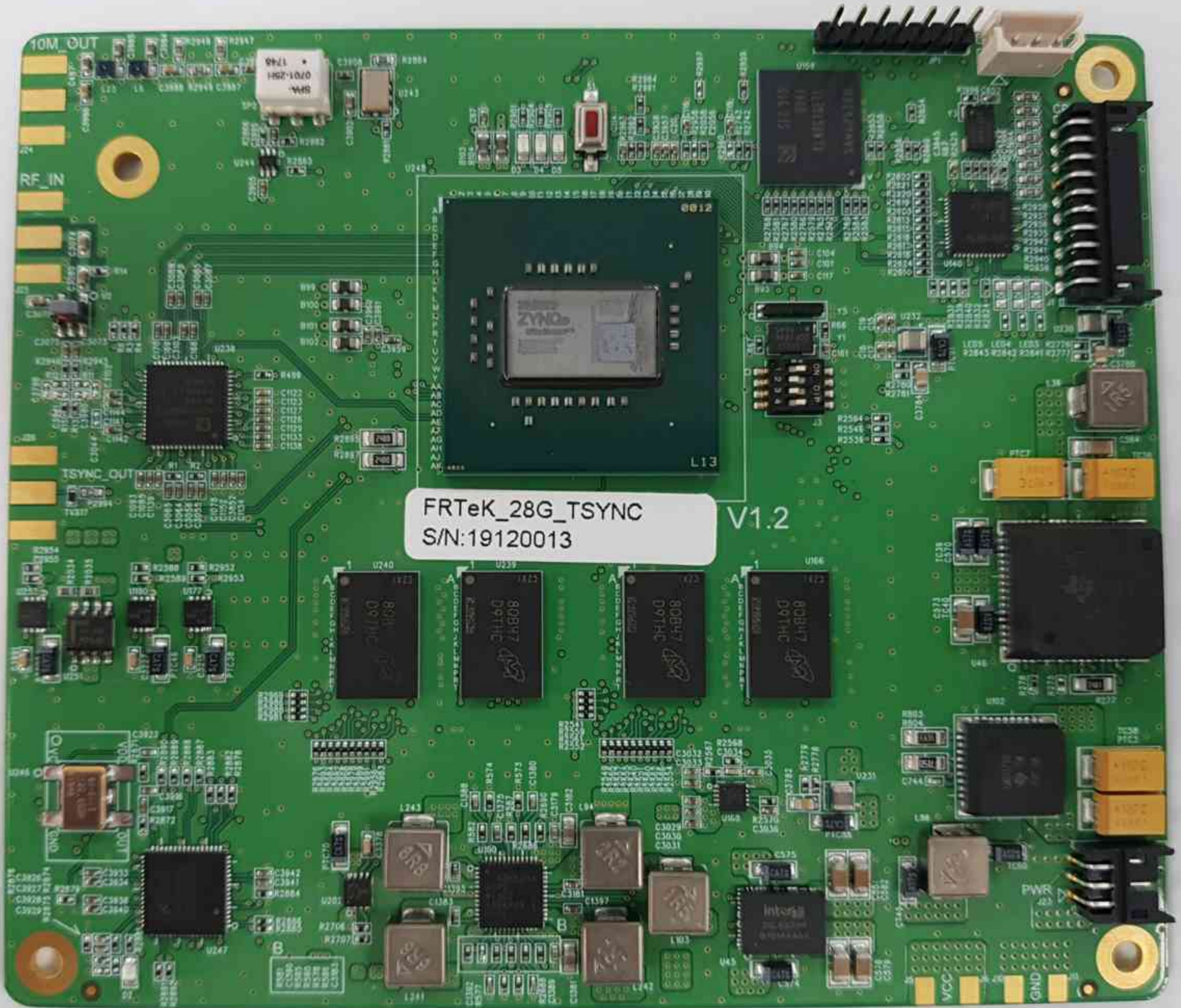


1947 11-1273-02

T-02A

1947 11-1273-02





FRTeK_28G_TSYNC
S/N:19120013

V1.2

0012

ZYNQ

E11

80B47
D9THC

80B47
D9THC

80B47
D9THC

80B47
D9THC

Intersil

10M_OUT

RF_IN

TSYNC_OUT

VCC

GND

PWR

0701-25H
SMA

30A

3300

3300

3300

3300

3300

3300

3300

3300

3300

3300

3300

3300

3300

3300

3300

3300

3300

3300

3300

3300

3300

3300

3300

3300

3300

3300

3300

3300

3300

3300

3300

3300

3300

3300

3300

3300

3300

3300

3300

3300

3300

3300

3300

3300

3300

3300

3300

3300

3300

3300

3300

3300

3300

3300

3300

3300

3300

3300

3300

3300

3300

3300

3300

3300

3300

3300

3300

3300

3300

3300

3300

3300

3300

3300

3300

3300

3300

3300

3300

3300

3300

3300

3300

3300

3300

3300

3300

3300

3300

3300

3300

3300

3300

3300

3300

3300

3300

3300

3300

3300

3300

3300

3300

3300

3300

3300

3300

3300

3300

3300

3300

3300

3300

3300

3300

3300

3300

3300

3300

3300

3300

3300

3300

3300

3300

3300

3300

3300

3300

3300

3300

3300

3300

3300

3300

3300

3300

3300

3300

3300

3300

3300

3300

3300

3300

3300

3300

3300

3300

3300

3300

3300

3300

3300

3300

3300

3300

3300

3300

3300

3300

3300

3300

3300

3300

3300

3300

3300

3300

3300

3300

3300

3300

3300

3300

3300

3300

3300

3300

3300

3300

3300

3300

3300

3300

3300

3300

3300

3300

3300

3300

3300

3300

3300

3300

3300

3300

3300

3300

3300

3300

3300

3300

3300

3300

3300

3300

3300

3300

3300

3300

3300

3300

3300

3300

3300

3300

3300

3300

3300

3300

3300

3300

3300

3300

3300

3300

3300

3300

3300

3300

3300

3300

3300

3300

3300

3300

3300

3300

3300

3300

3300

3300

3300

3300

3300

3300

3300

3300

3300

3300

3300

3300

3300

3300

3300

3300

3300

3300

3300

3300

3300

3300

3300

3300

3300

3300

3300

3300

3300

3300

3300

3300

3300

3300

3300

3300

3300

3300

3300

3300

3300

3300

3300

3300

3300

3300

3300

Sync-Converter 2020. 01. 10

RL737B400B1
RFG

RL737B400B1
RFG

KSP-2162U
0727
RFG

MCL B 2L 1
ADE-42MH

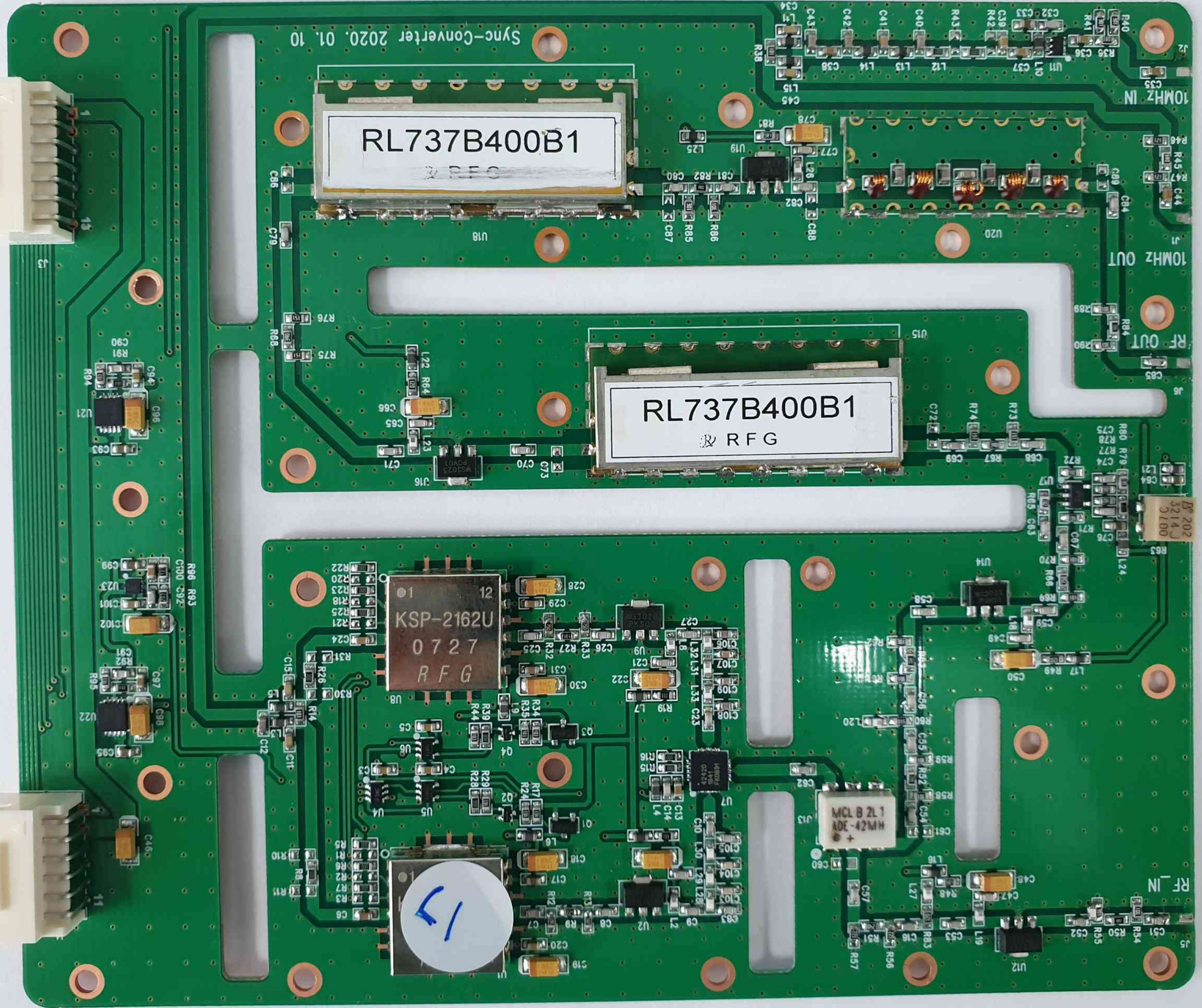
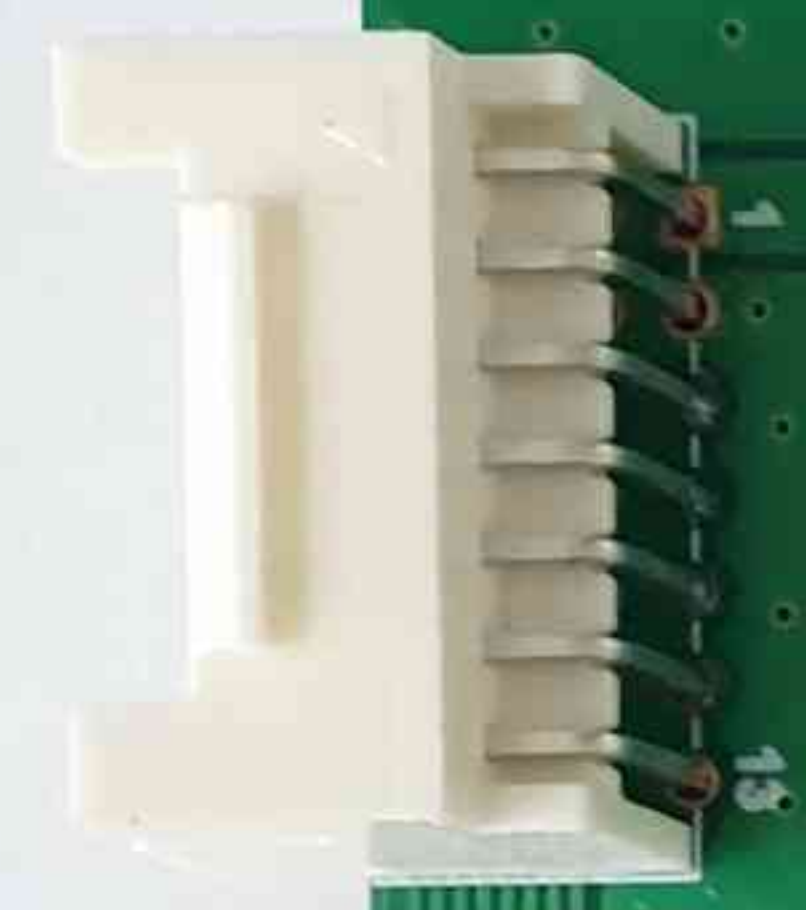
15

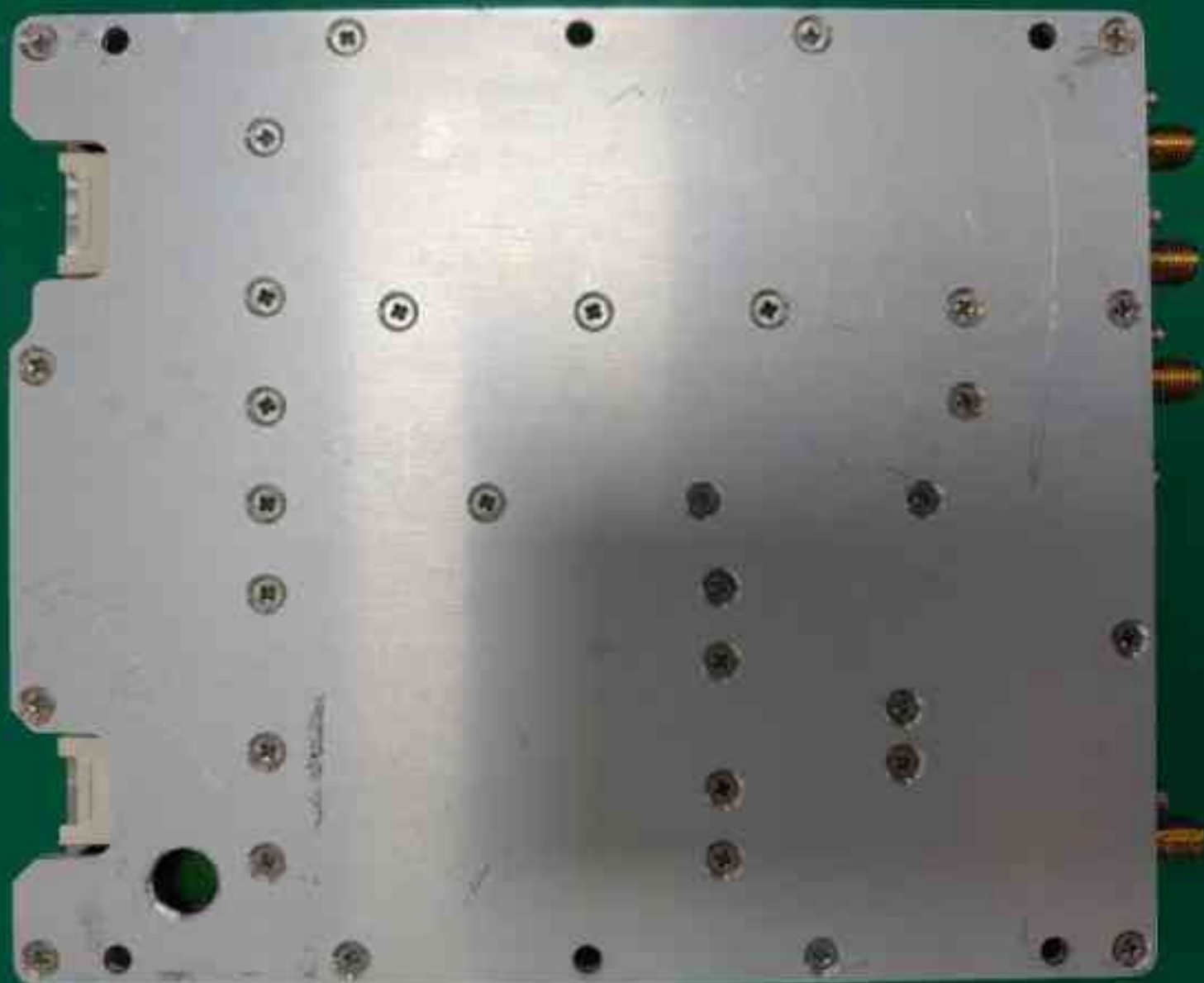
10MHz IN

10MHz OUT

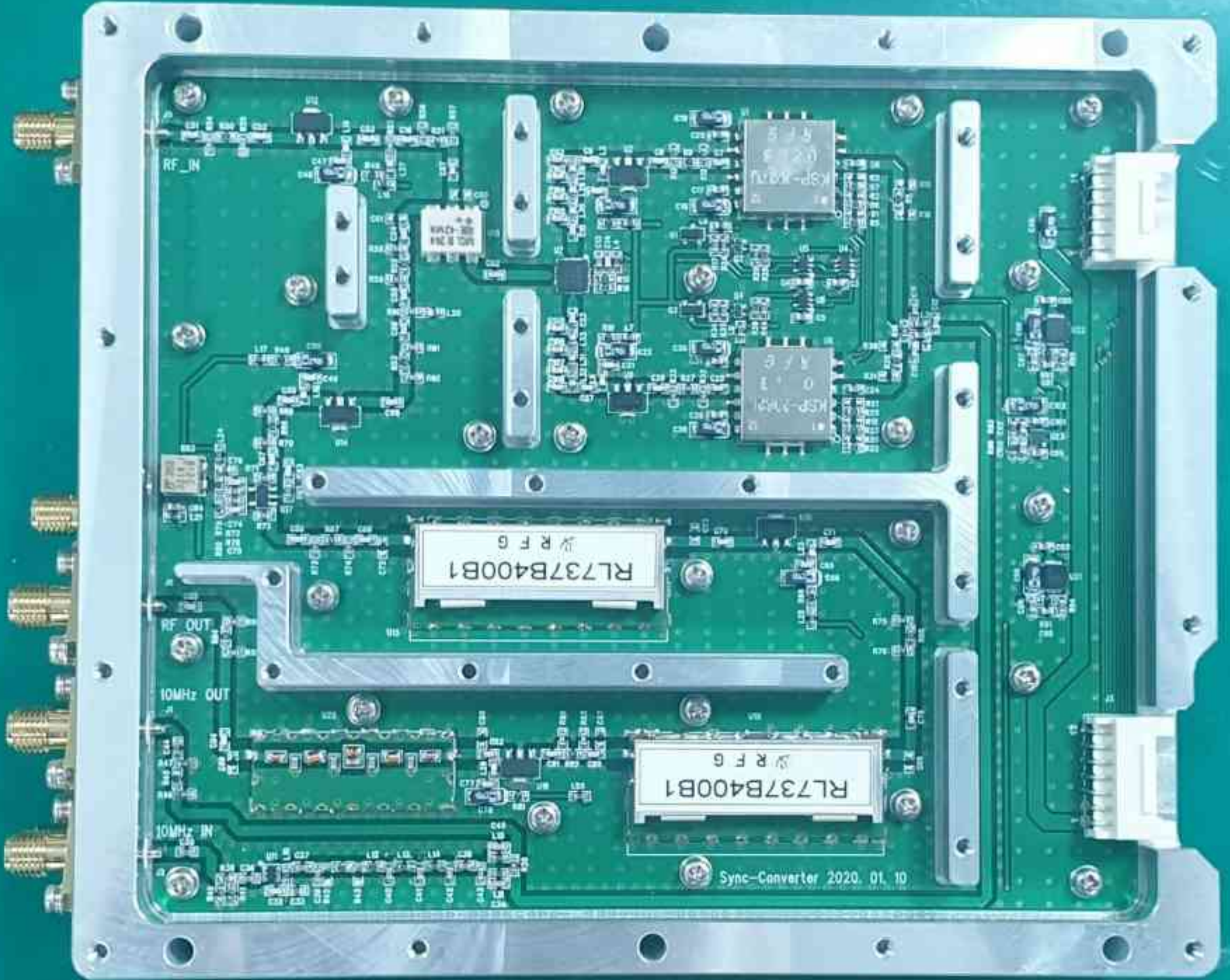
RF OUT

RF IN









RF_IN

KSP-K2M2
RF 5

KSP-2M2
RF 1

RL737B400B1
RF 6

RL737B400B1
RF 6

Sync-Converter 2020. 01. 10

RF_OUT

10MHz OUT

10MHz IN

FRTeK_28G_T5YNC
S/N 19120013

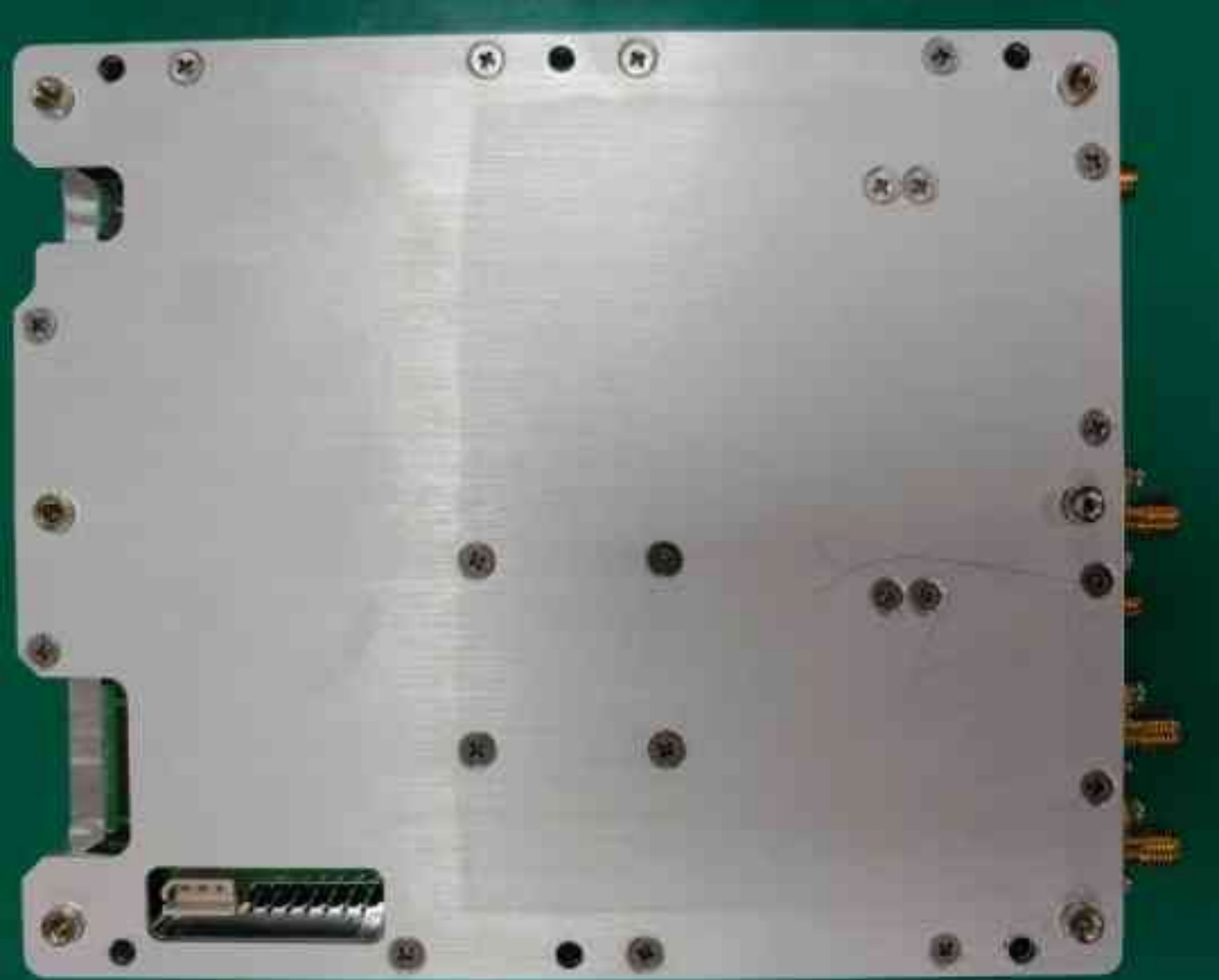
V1.2

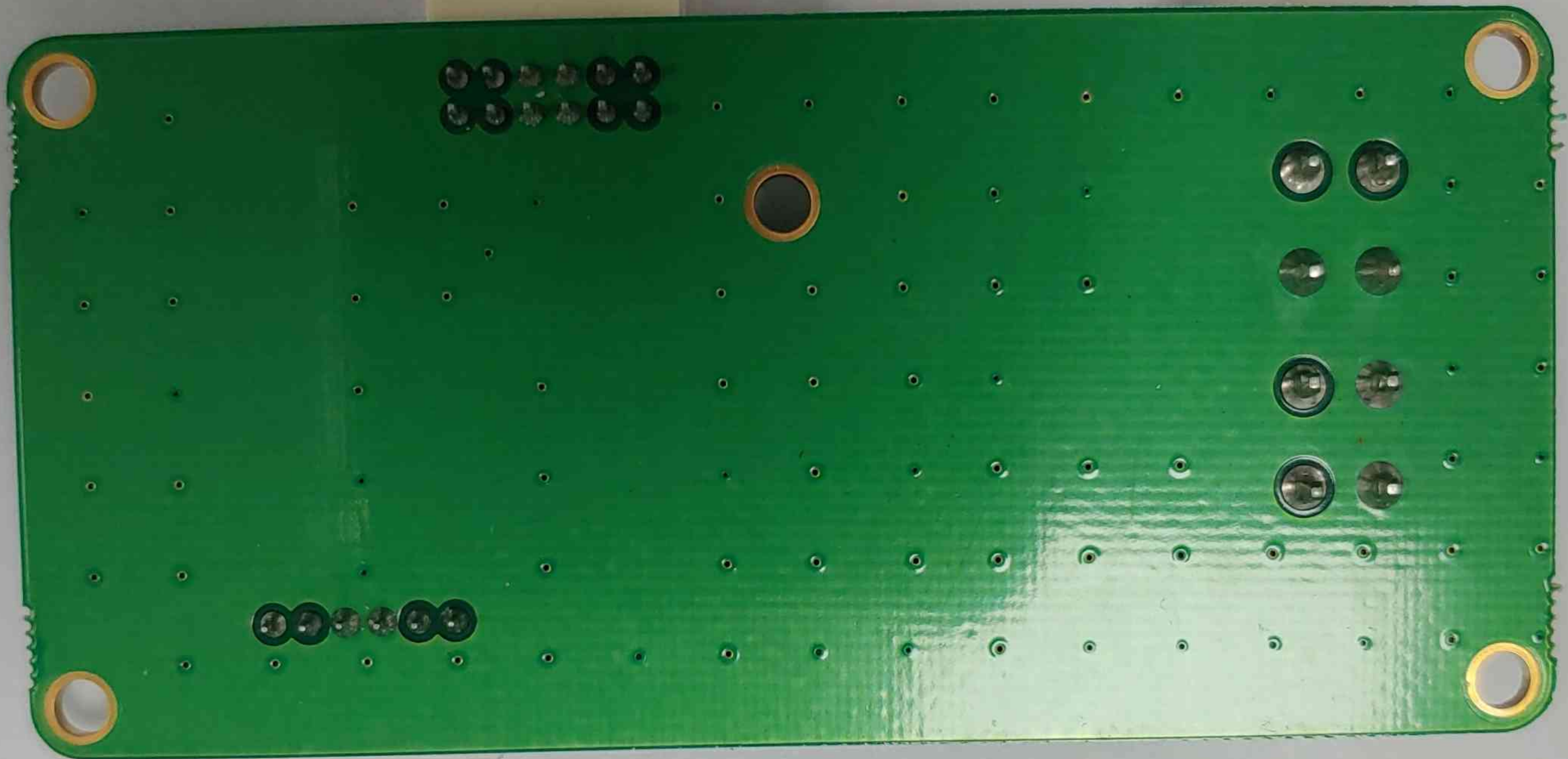


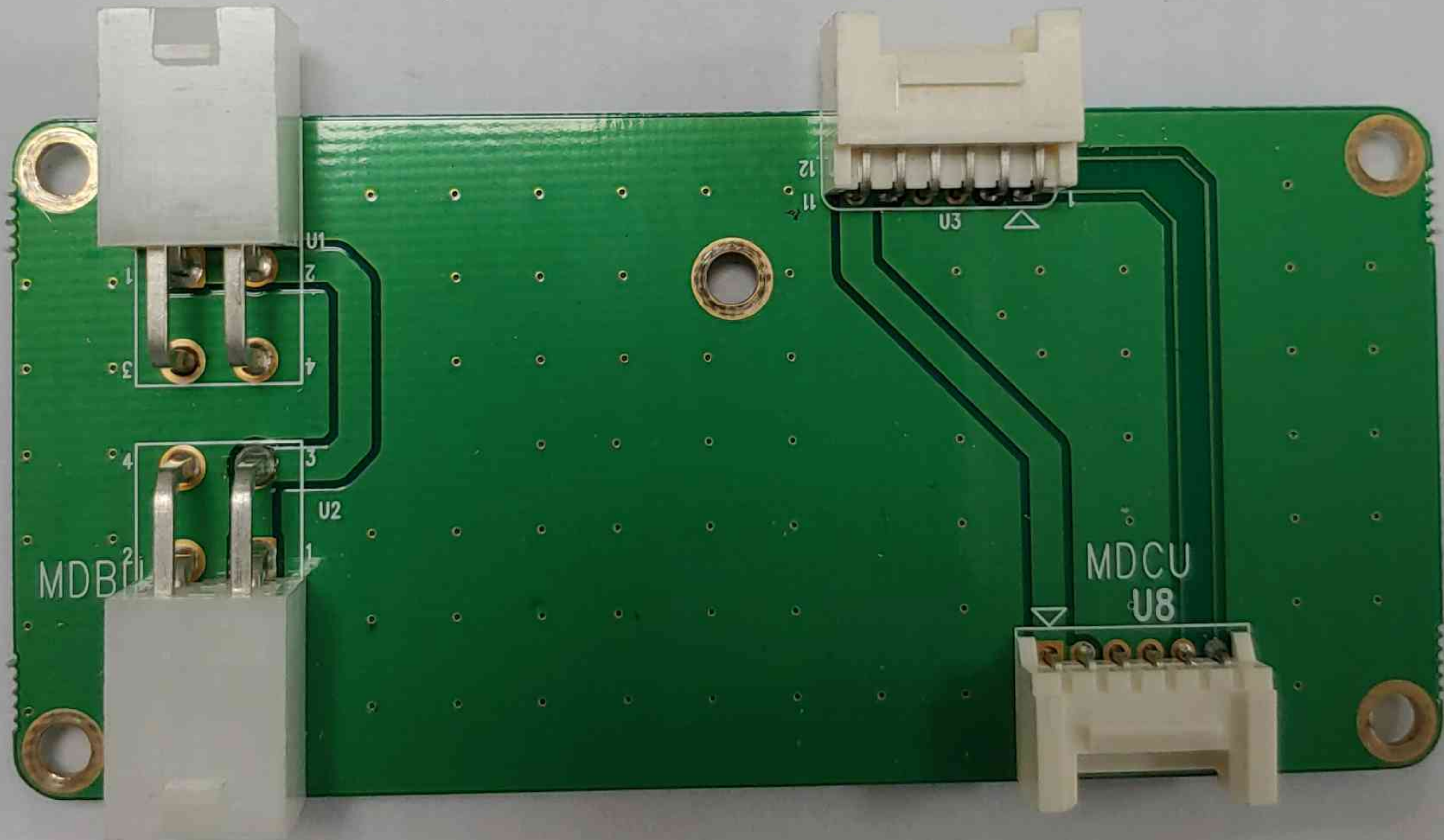












MDBf

U1

2

4

U2

1

3

4

12

11

U3

MDCU

U8