

OPTIC

AC IN

AC GND

: AC - L
: AC - N
: F.G

SISO #1

SISO #2

SISO #3

SISO #4

MIMO #1
& DC

MIMO #2
& DC

MIMO #3
& DC

MIMO #4
DC

39GHz

5G

DRU

FRtek
Fiber Radio Technologies

•
AC IN
•

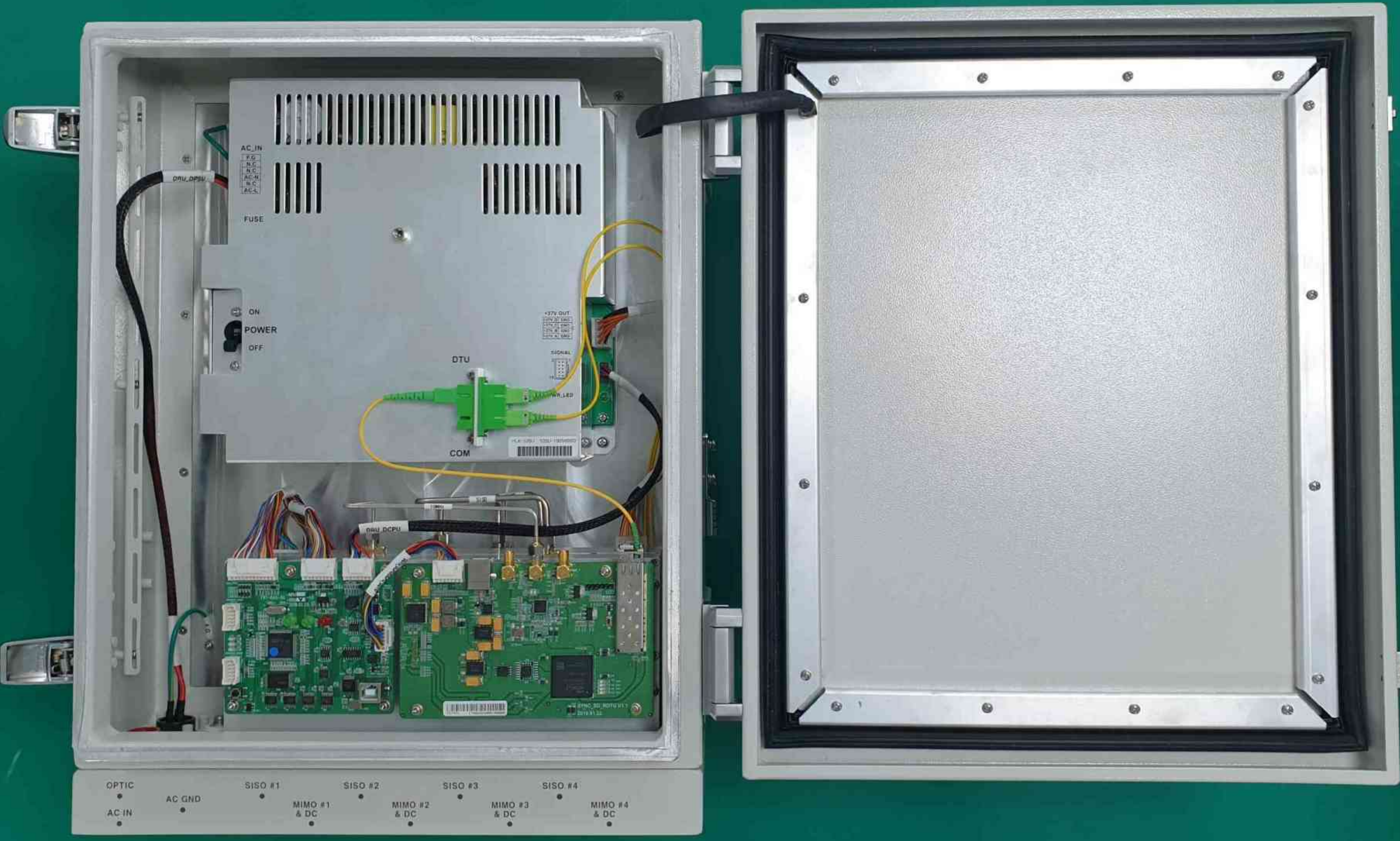
•
AC GND
•

•
MIMO #1
& DC
•

•
MIMO #2
& DC
•

•
MIMO #3
& DC
•

•
MIMO #4
& DC
•



AC IN
F.G.
N.C.
N.C.
AC-M
N.C.
AC-L
FUSE

ON
POWER
OFF

DTU

COM

+37V OUT
0.7A
17V 0.1A
5V 0.1A
1.5V 0.1A

SIGNAL

WAVE LED

144-1261 12011200000

0911 DCPU

OPTIC
AC IN
AC GND
SISO #1
MIMO #1 & DC
SISO #2
MIMO #2 & DC
SISO #3
MIMO #3 & DC
SISO #4
MIMO #4 & DC

G N D 

Product Name : 28GHz 5G DRU
Model Name : FR-R5G17AFU
Serial Number : FRC13-198-0003
D A T E : 2019. 08
Manufacturer : FRTek Co., Ltd
Made in Korea







GND

LEONARD
BLIND
18 20





MIMO

SISO & DC

▲
DEBUG & S/W

5G

DU

◀ GND

39GHz

GND ▶



PWR



RUN



ALM

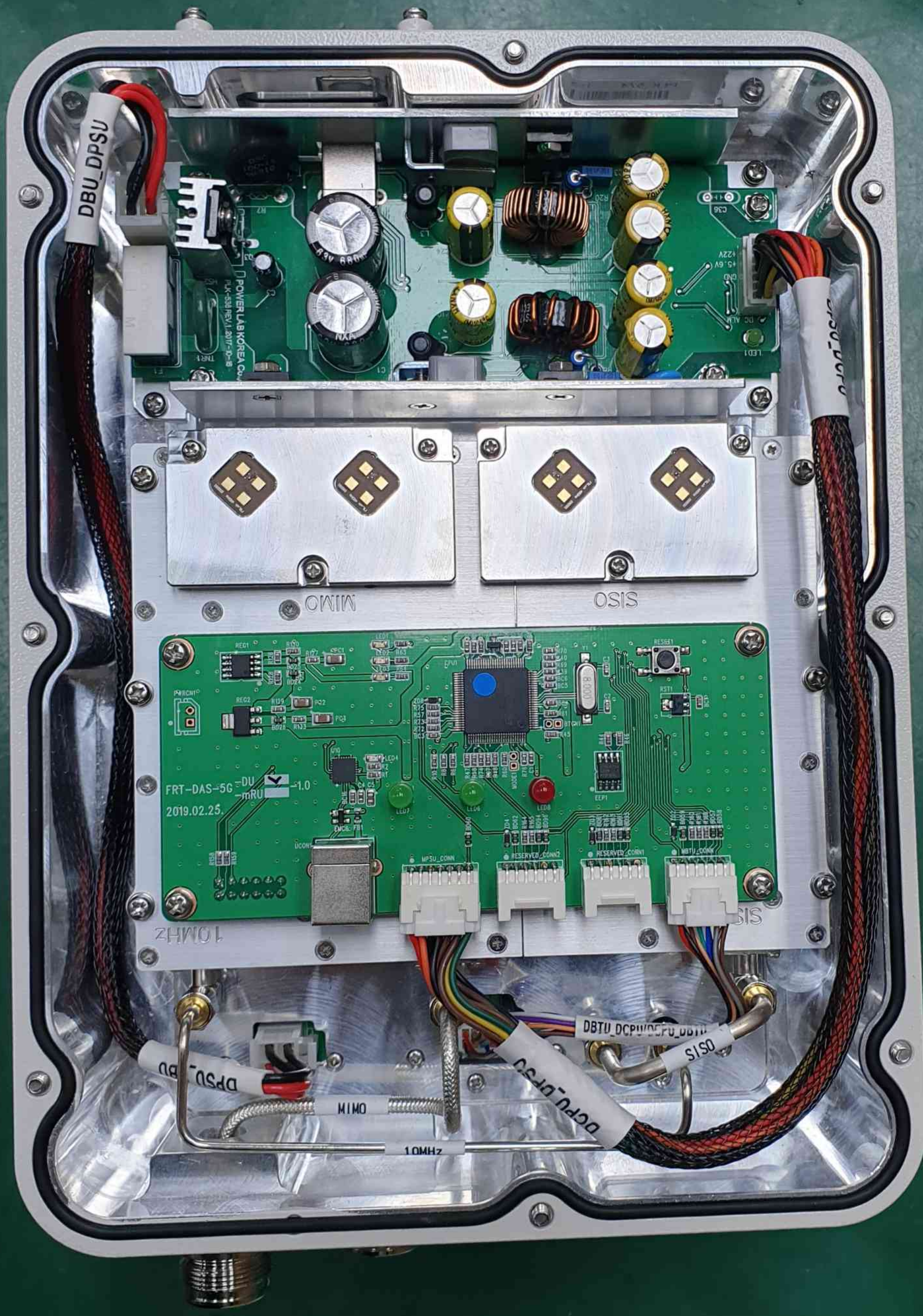
MIMO



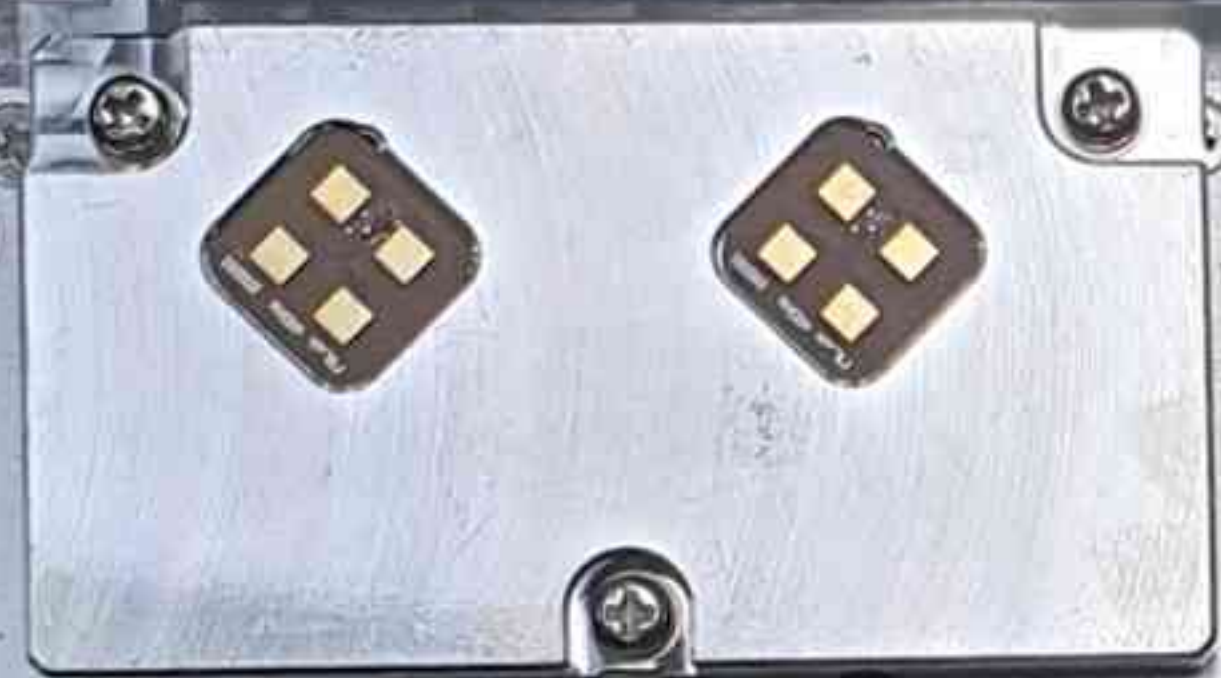
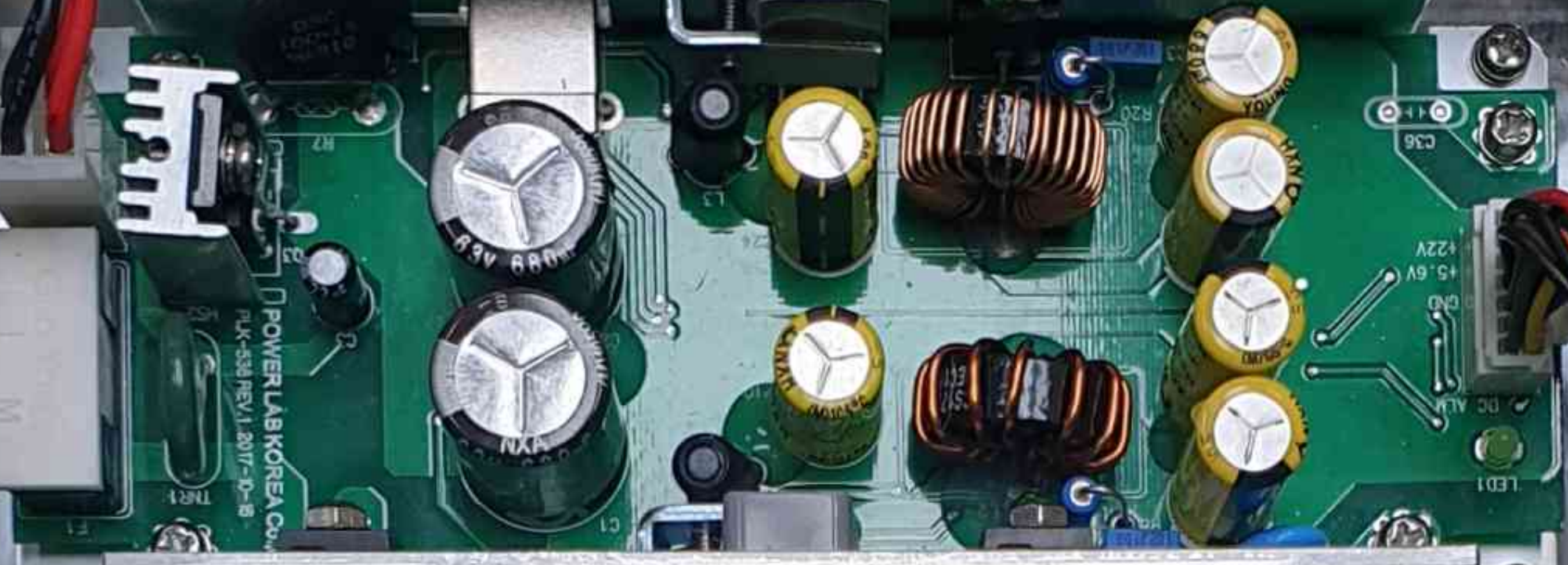
SISO & DC



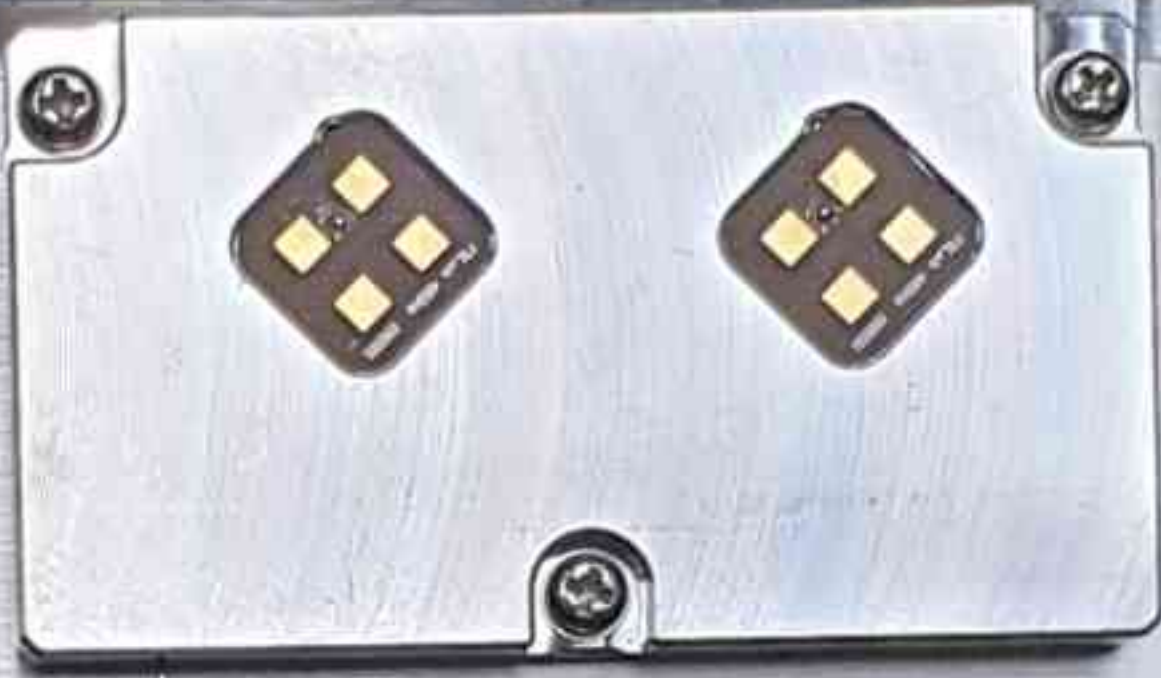
FRTek
Fiber Radio Technologies



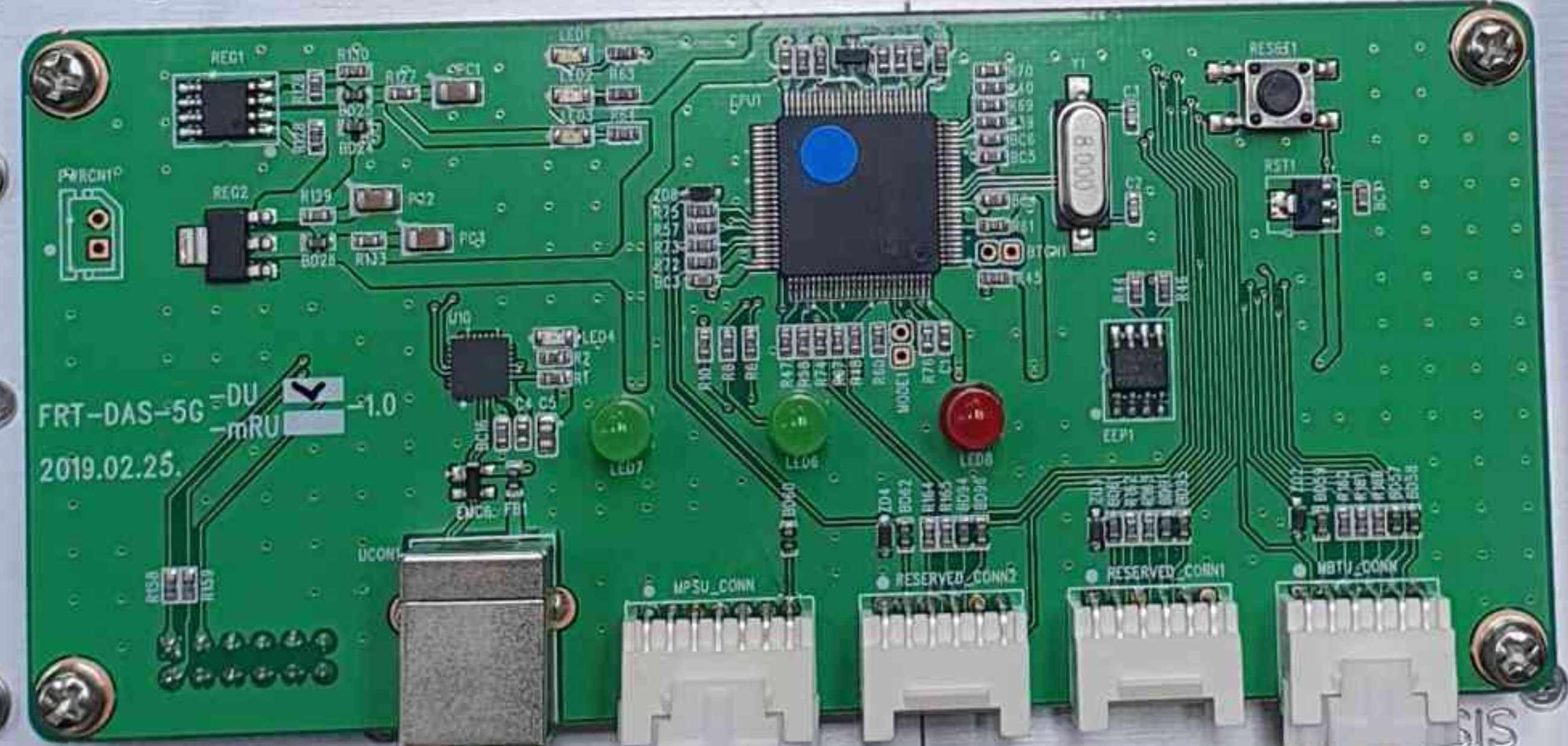
DBU_DPSU



MIMO



SISO



FRT-DAS-5G DU mRU -1.0
2019.02.25

10MHz

SISO



DPSU_DBU

MIMO

10MHz

DBU_DPSU

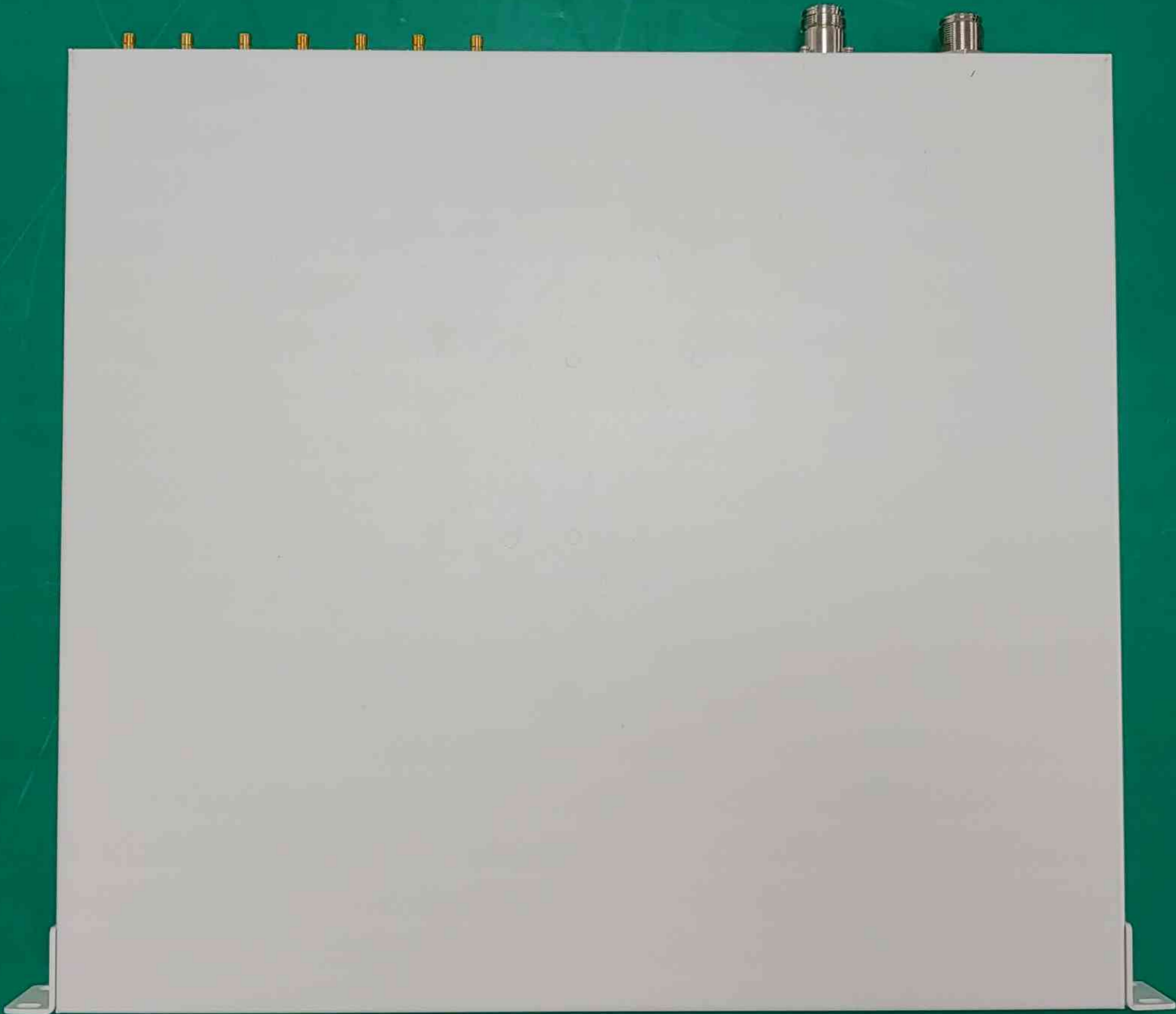
SISO







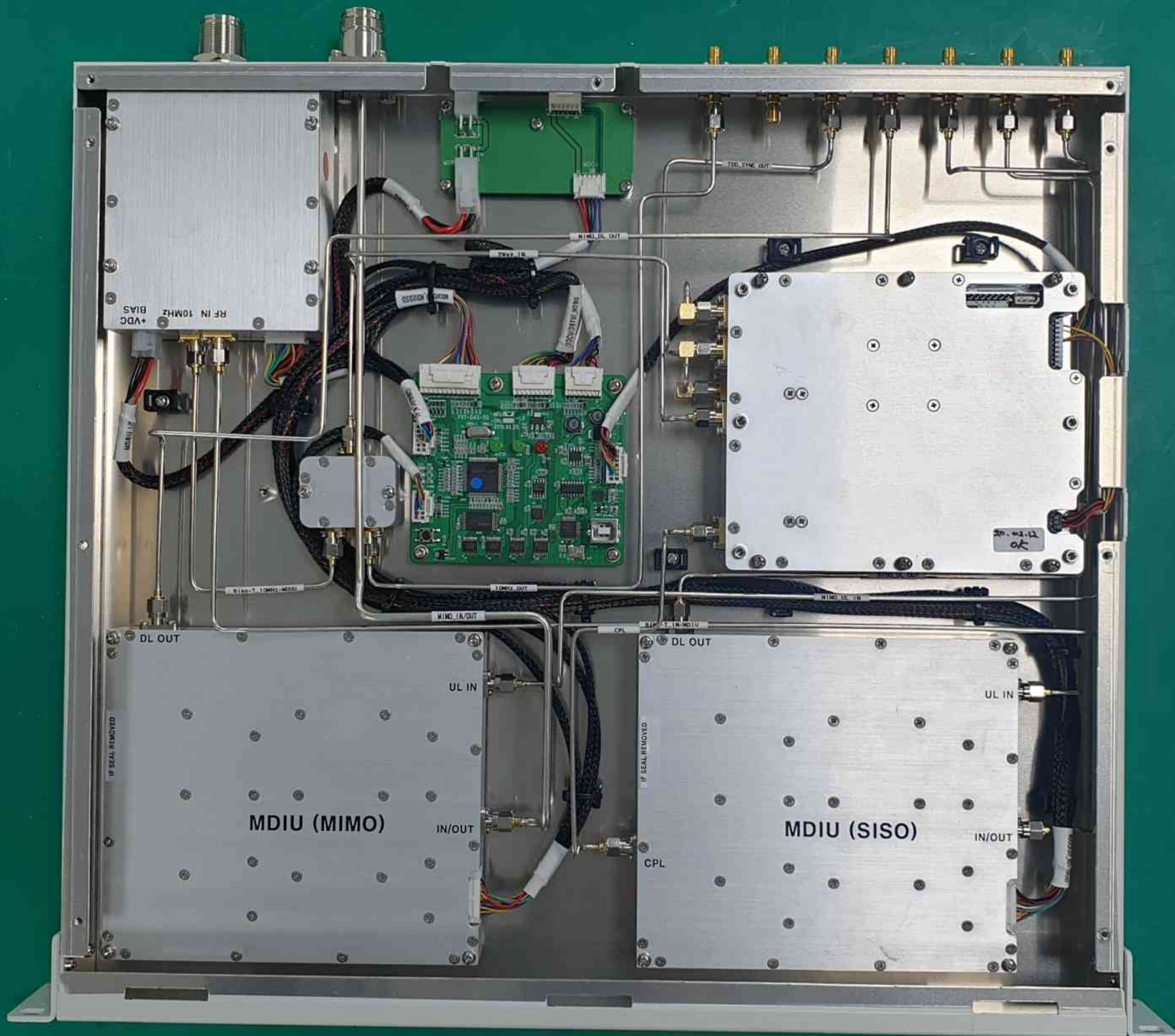




MDU

39GHz

FRtek
Fiber Radio Technologies



+VDC
RF IN 10MHz
BIAS

DL OUT

UL IN

MDIU (MIMO)

IN/OUT

DL OUT

UL IN

MDIU (SISO)

IN/OUT

20.02.12
OK

CPL

RF IN MDIU

10MHz_OUT

MIMO_IN/OUT

MIMO_UL_IN

MIMO_DL_OUT

TDD SYNC OUT

MIMO_UL

BIAS-T 10MHz-MDUI

SS2500

SS2500

SS2500

TEST IN

TEST IN

TEST IN

TEST IN

TEST IN

TEST IN

TEST IN

TEST IN

TEST IN

TEST IN

TEST IN

TEST IN

TEST IN

TEST IN

TEST IN

TEST IN

TEST IN

TEST IN

TEST IN

TEST IN

TEST IN

TEST IN

TEST IN

TEST IN

TEST IN

TEST IN

TEST IN

TEST IN

TEST IN

TEST IN

TEST IN

TEST IN

TEST IN

TEST IN

TEST IN

TEST IN

TEST IN

TEST IN

TEST IN



SISO
UL IN DL OUT

MIMO
UL IN DL OUT

TDD
SYNC OUT

10MHz
IN OUT

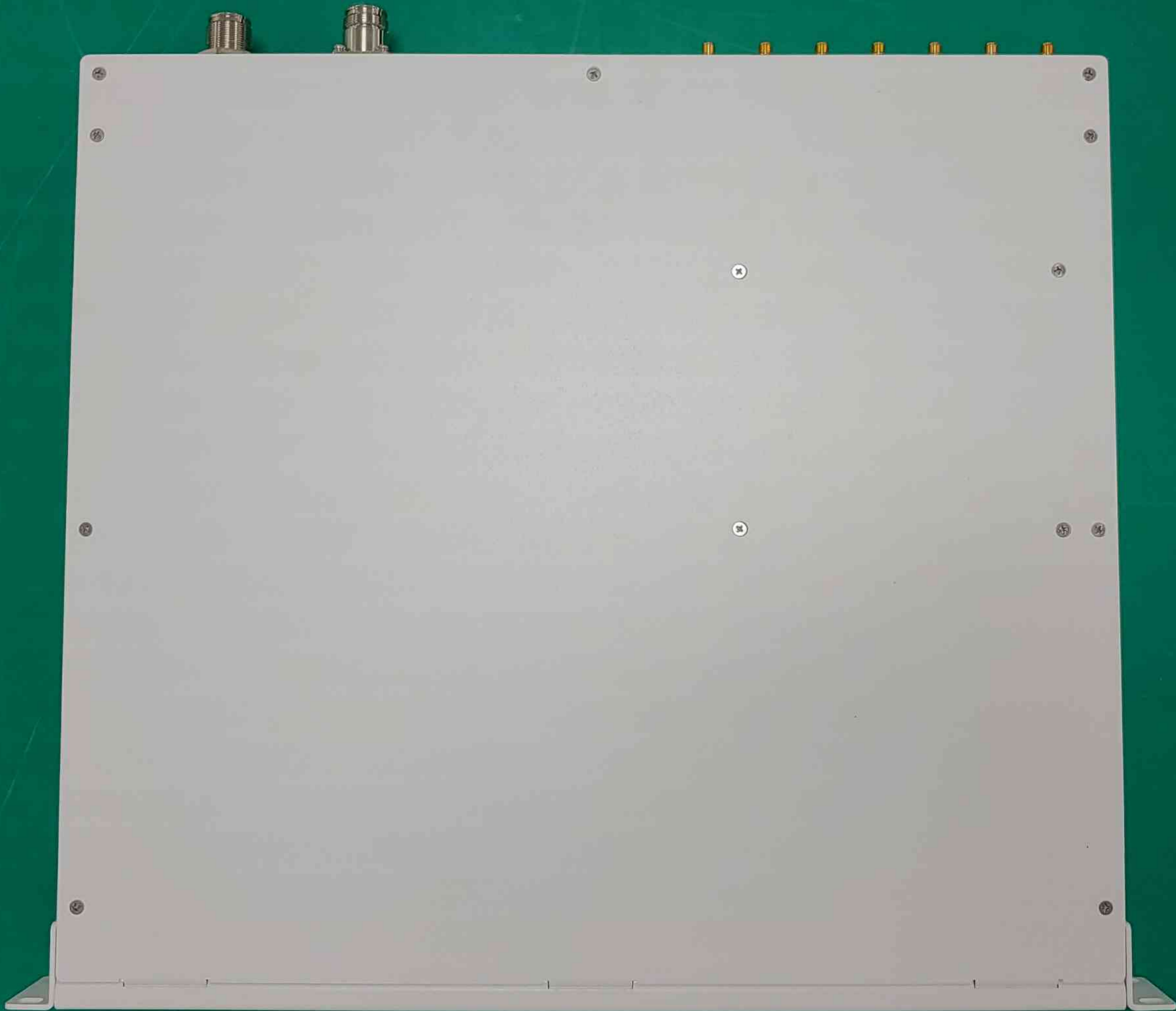
I/O

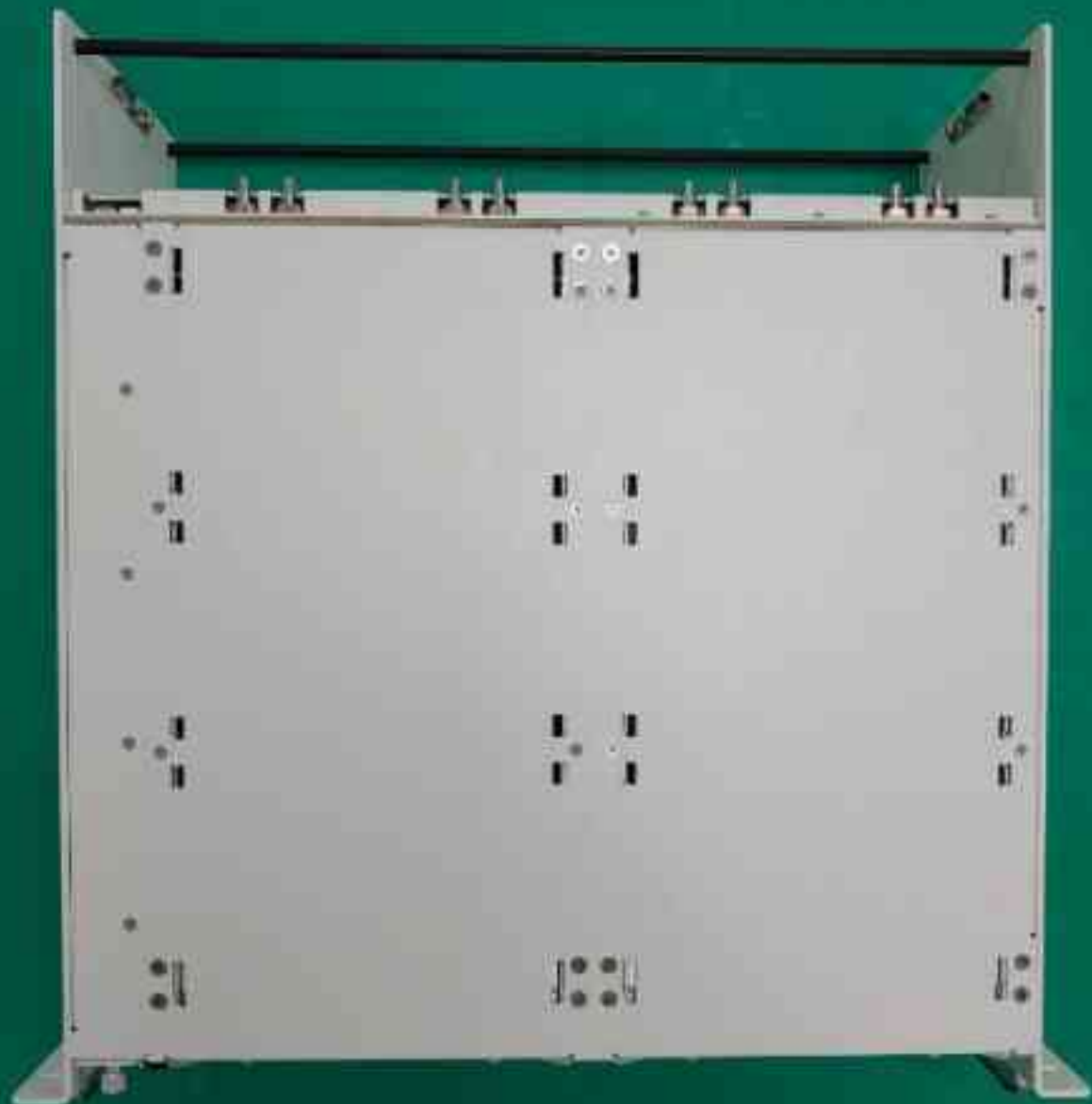
PWR

MIMO
IN/OUT

SISO
IN/OUT







39GHz

5G
MHU



BR 1 BR 2 BR 3 BR 4 BR 5 BR 6 BR 7 BR 8

LD
PD
BR 1
BR 2
BR 3
BR 4
BR 5
BR 6
BR 7
BR 8



DEBUG

MDTU

39GHz
MCPMU

PWR
RUN
ALM

DEBUG



ETHERNET
(NMS)

39GHz
MITU



COM



MDTU



BR1

BR1

BR2

BR2

BR3

BR3

BR4

BR4

BR5

BR5

BR6

BR6

BR7

BR7

BR8

BR8

BLANK

BLANK

BLANK

BLANK

BR5

BR5

BR6

BR6

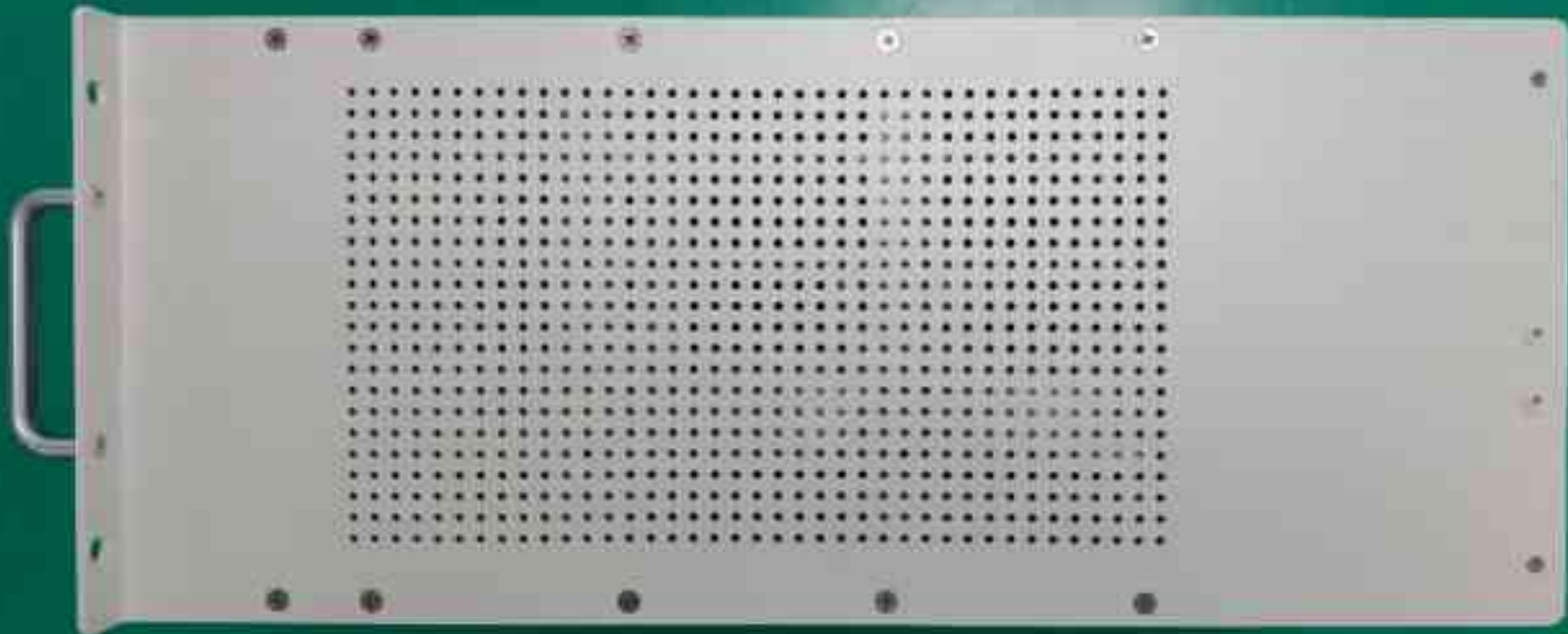
BR7

BR7

BR8

BR8





PSU_CON1

PSU_CON2



Door Open_F Door Open_R



MDU EXT_FAN1 EXT_FAN2 EXT_OCXO

REF_MON REF_A_In REF_B_In T_Sync_A Mon T_Sync_B Mon T_Sync_A In T_Sync_B In 5G_IF_In

UL1_Out DL1_In

UL1_Out DL1_In

UL1_Out DL1_In

UL1_Out DL1_In

DL0_In UL0_Out

DL0_In UL0_Out

DL0_In UL0_Out

DL0_In UL0_Out

UL1_Out DL1_In

UL1_Out DL1_In

UL1_Out DL1_In

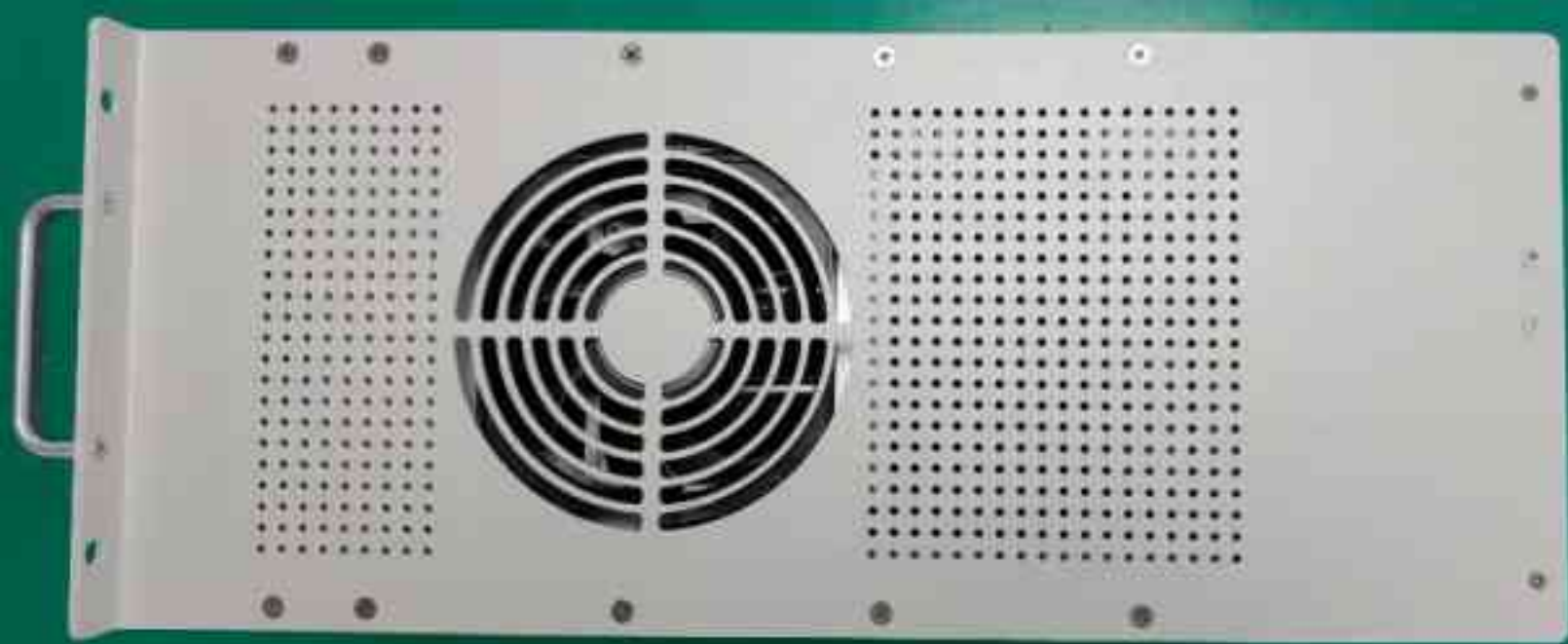
UL1_Out DL1_In

DL0_In UL0_Out

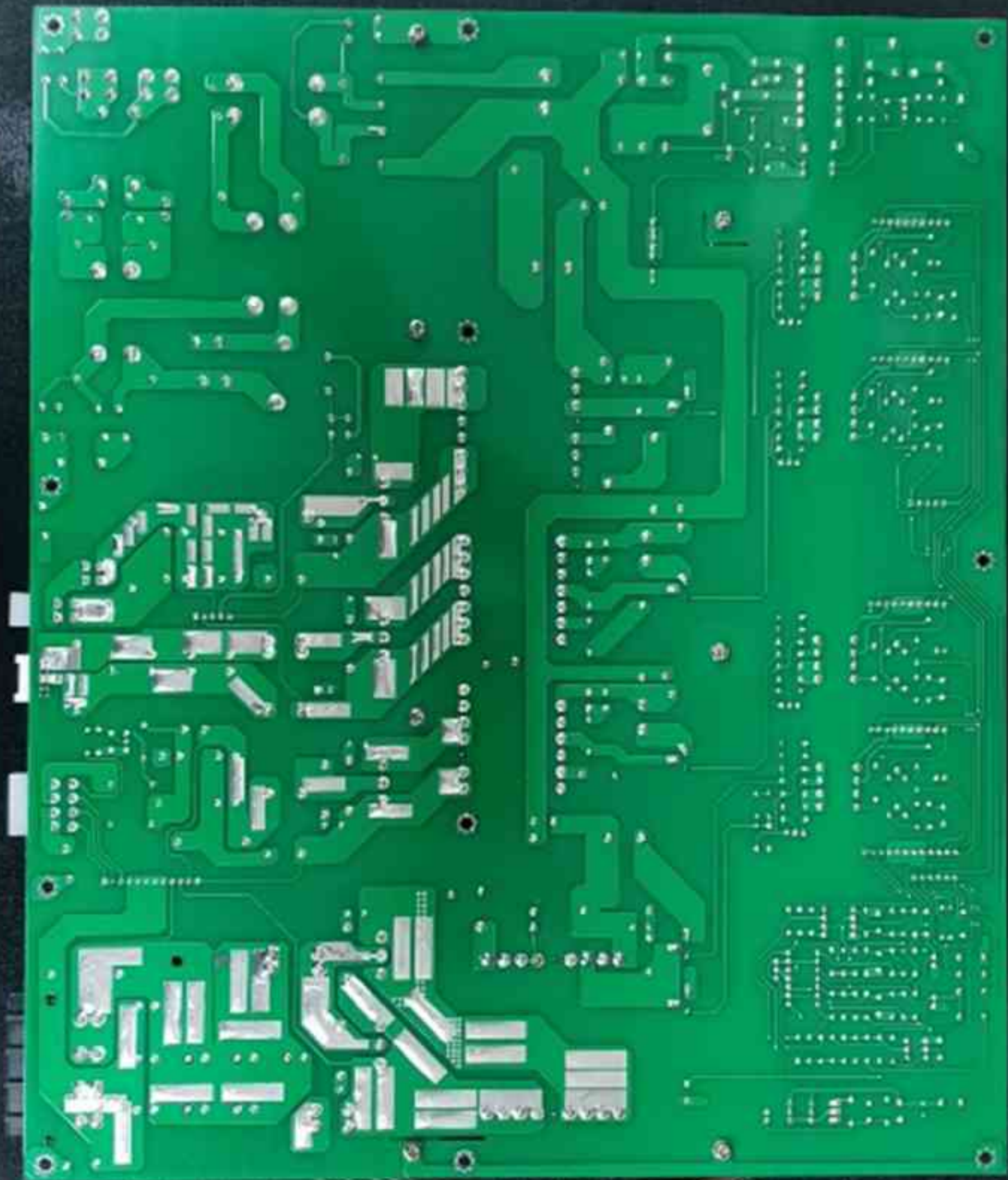
DL0_In UL0_Out

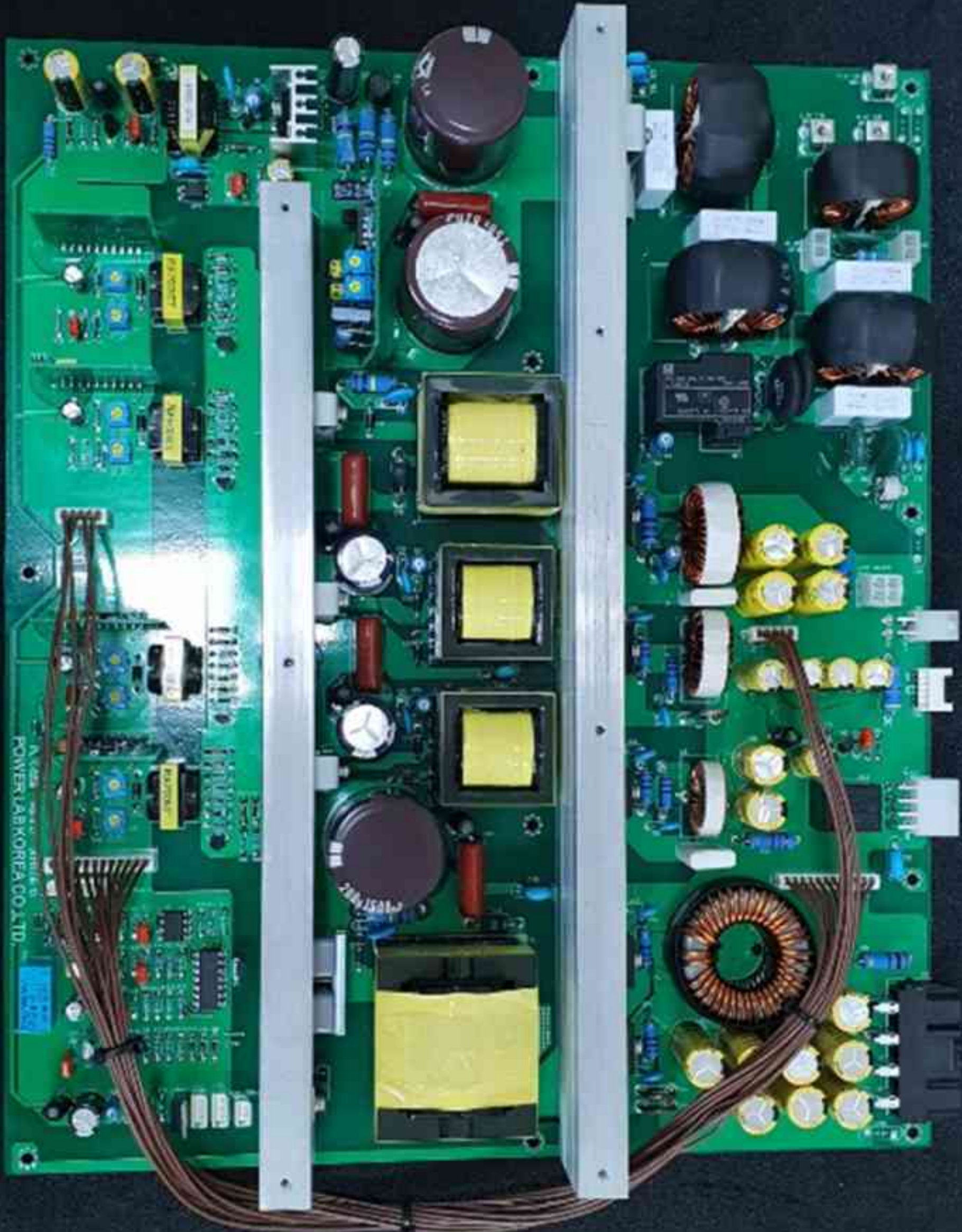
DL0_In UL0_Out

DL0_In UL0_Out

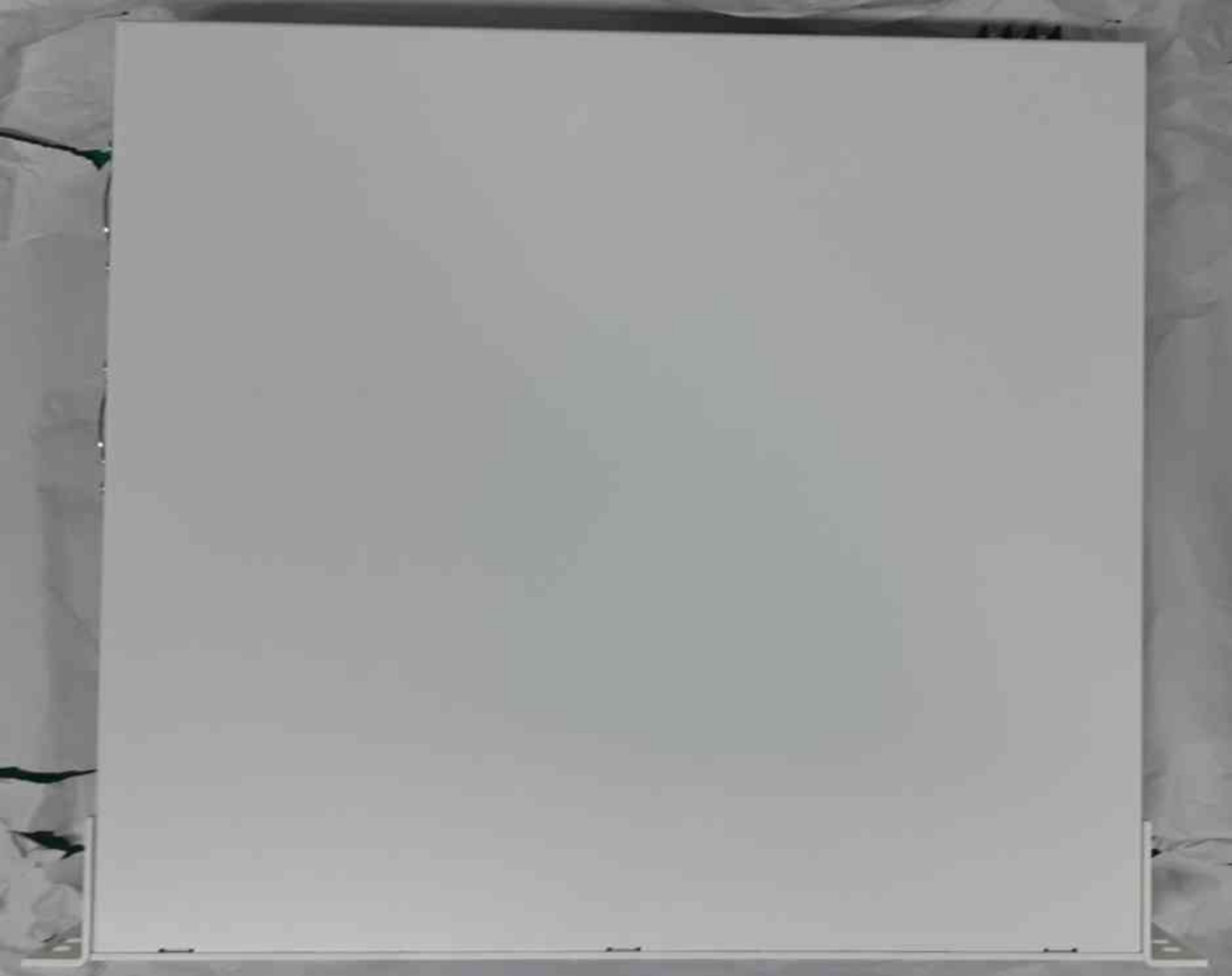








POWER LAB KOREA CO., LTD.



AC POWER



ON

OFF



AC FUSE
250V T15AL

MOBI PWR



ON

OFF

+37V

+12V

+6V

GND

AC

FAIL









FAN & SIGNAL

DE	AL	AL	AL	N.C	FAN EN
GND	GND	+24V	+24V		



1-4 N.C.
5-8 GND
9-12 +5V

MDSU PWR

GND	GND
+3TV	+3TV









5G

▲
MIMO & DC

▲
SISO

mRU



ALM RUN PWR

39GHz

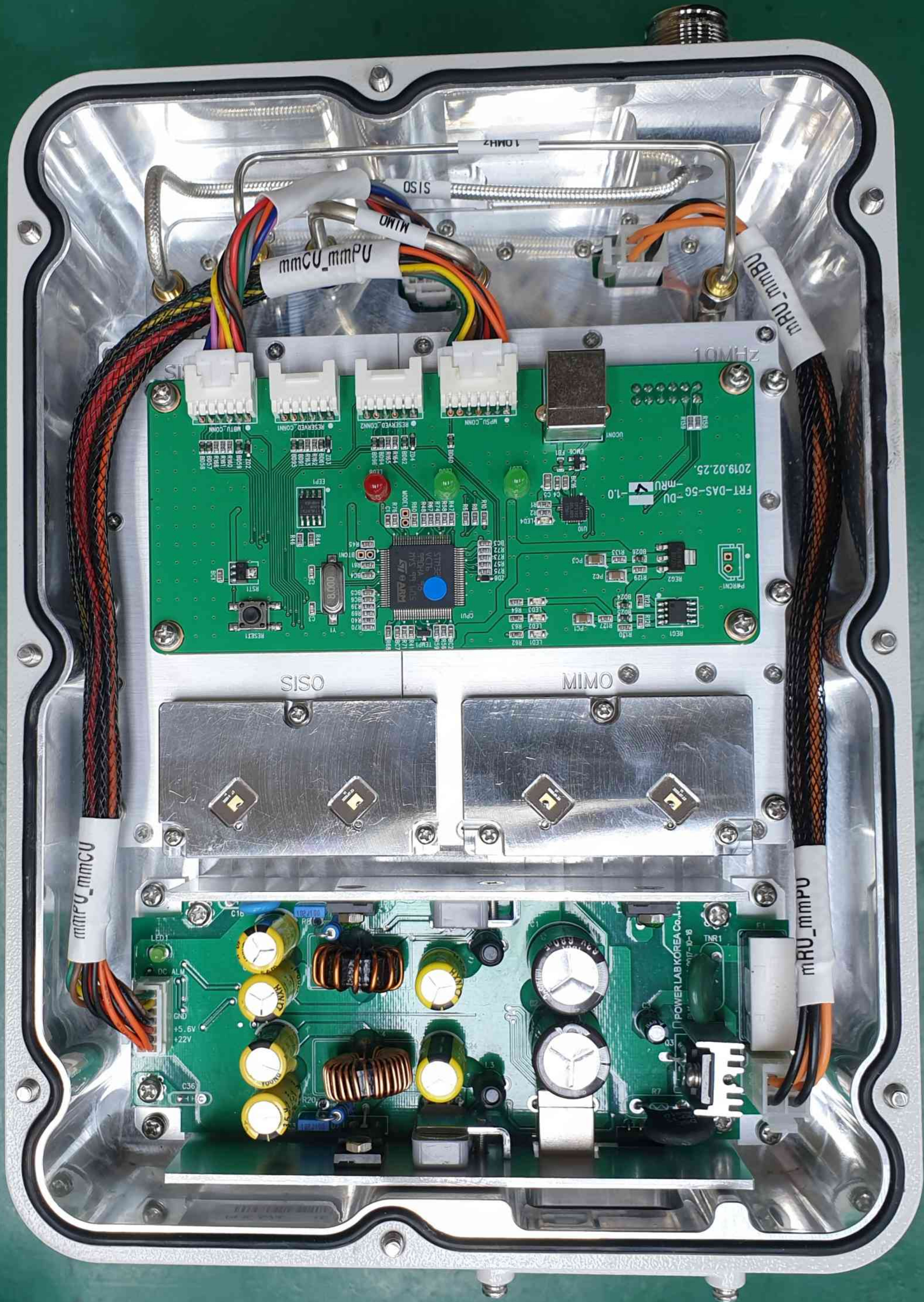
◀ GND

GND ▶

FR Tek
Fiber Radio Technologies

DEBUG & S/W





mmCU_mmpu

mRU_mmbu

FR1-DAS-5G-DU-MRU-1.0
2019.02.25

SISO

MIMO

mmCU_mmpu

mRU_mmpu

POWER LAB KOREA Co., Ltd.
17-10-8



