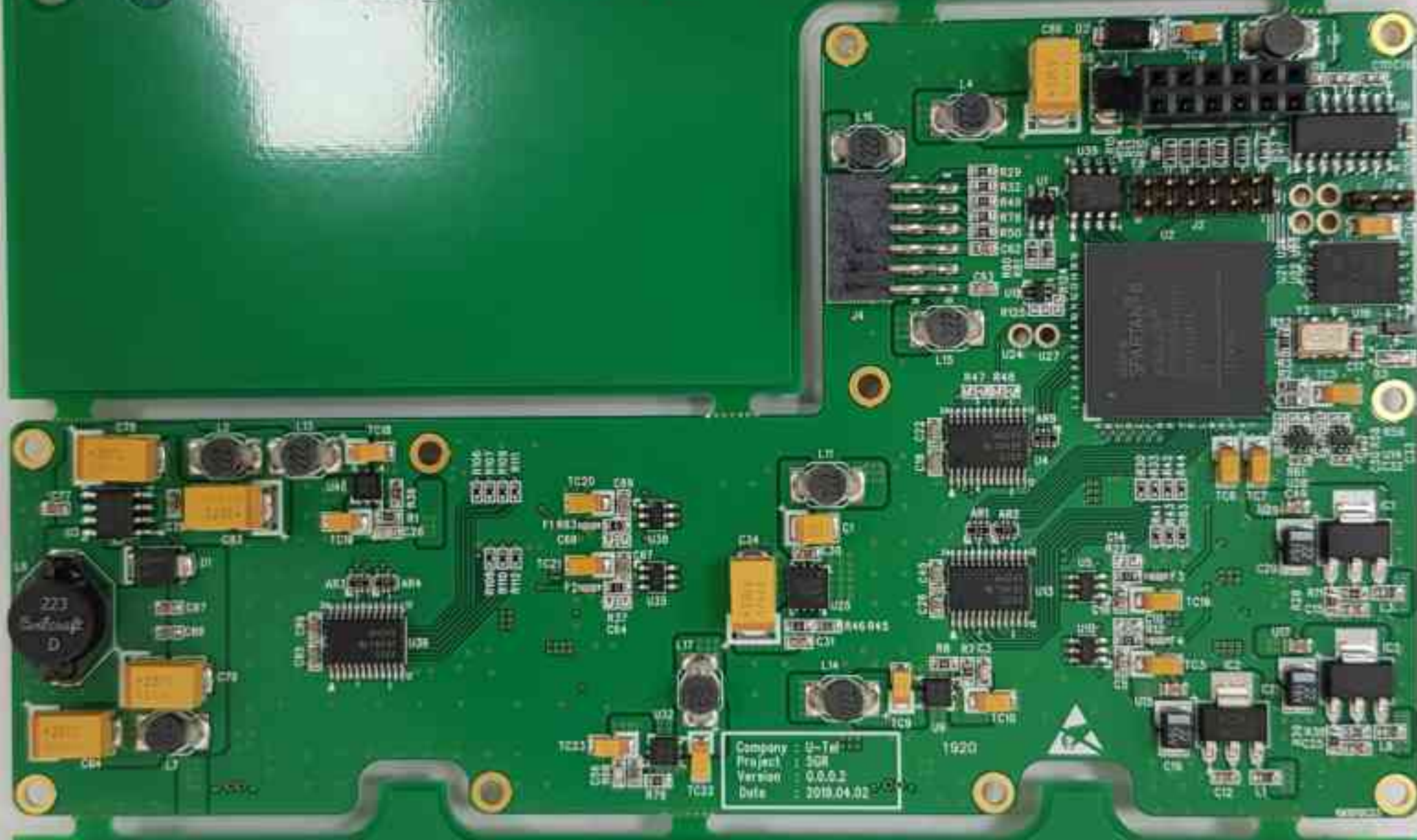


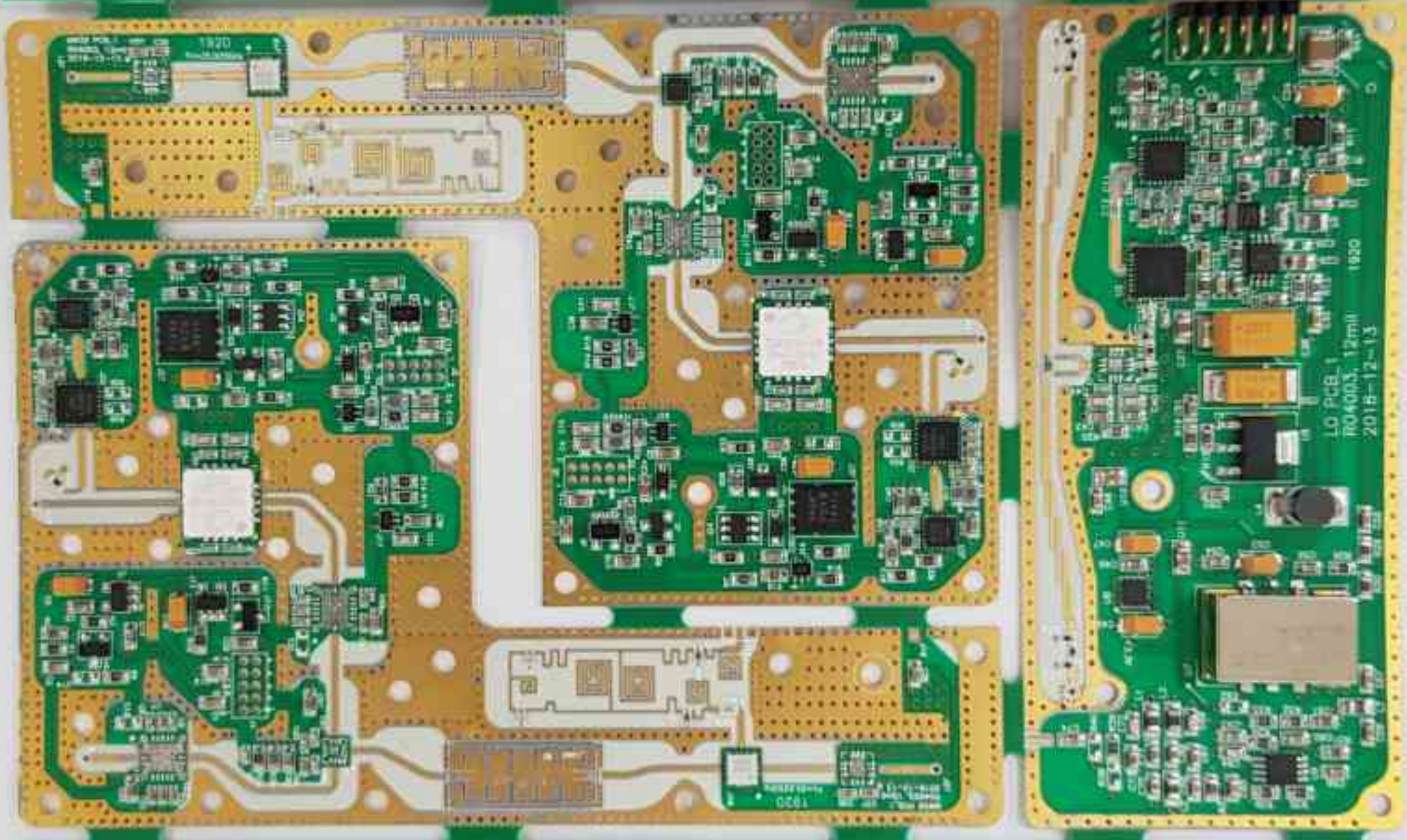


5GR CONTROL



2019.04.03

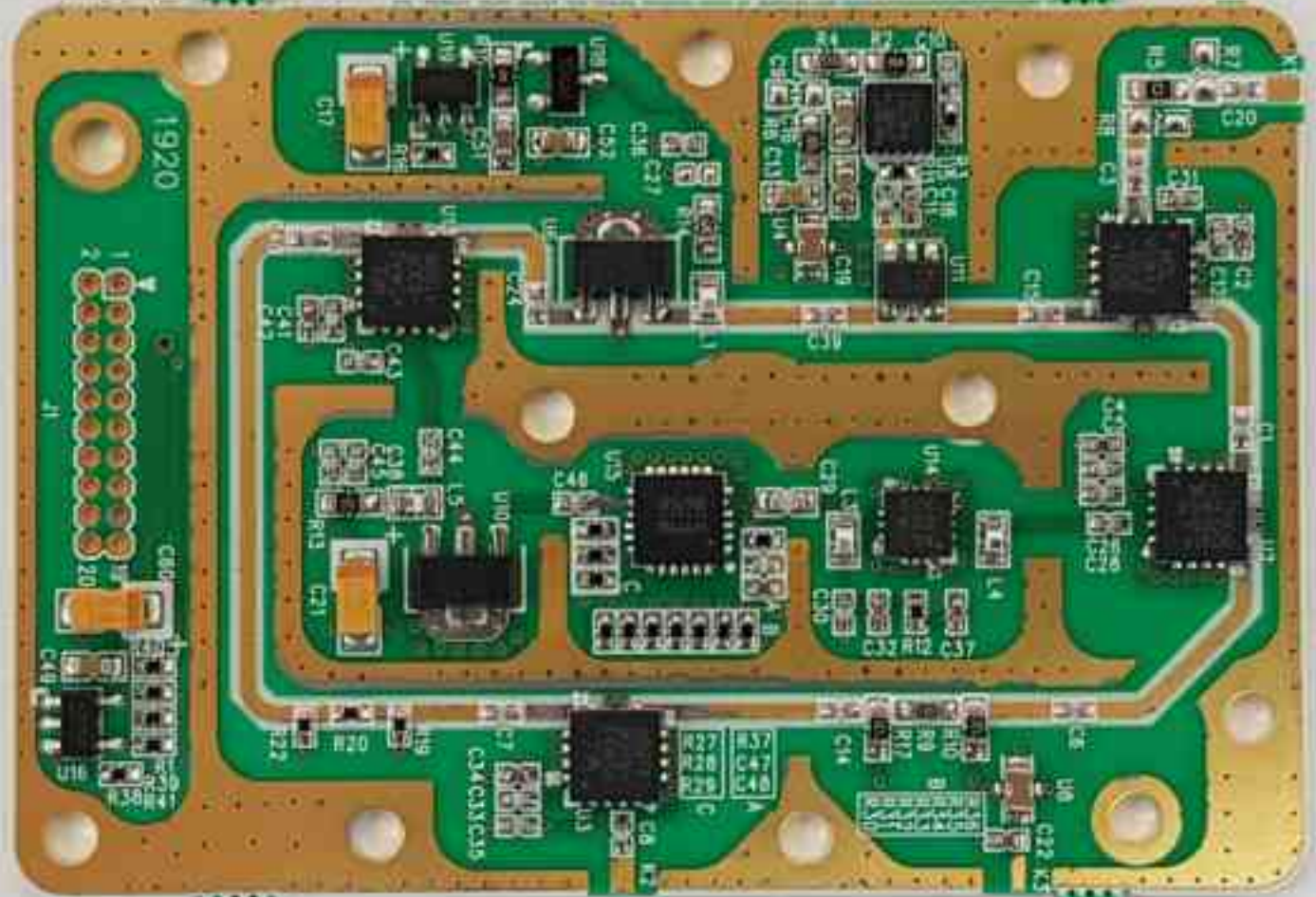
506 26284 ~~3653~~ MW&LO 3653 ~~1000~~



LO PCB 1
R04003, 12mil
2018-12-13
1920

2019.05.02

5GR-IF



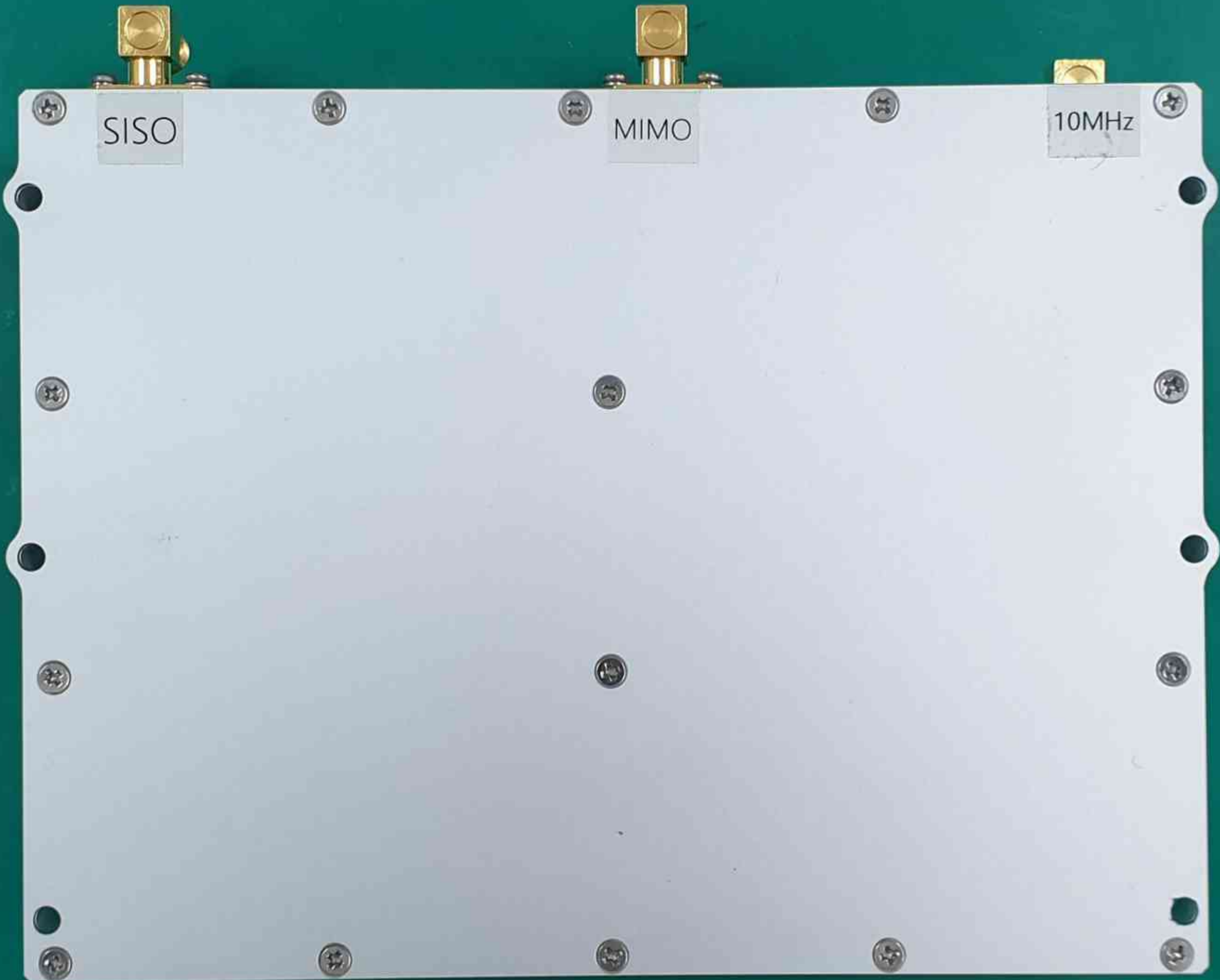
1920

2019.04.03

SISO

MIMO

10MHz



MIMO

SISO

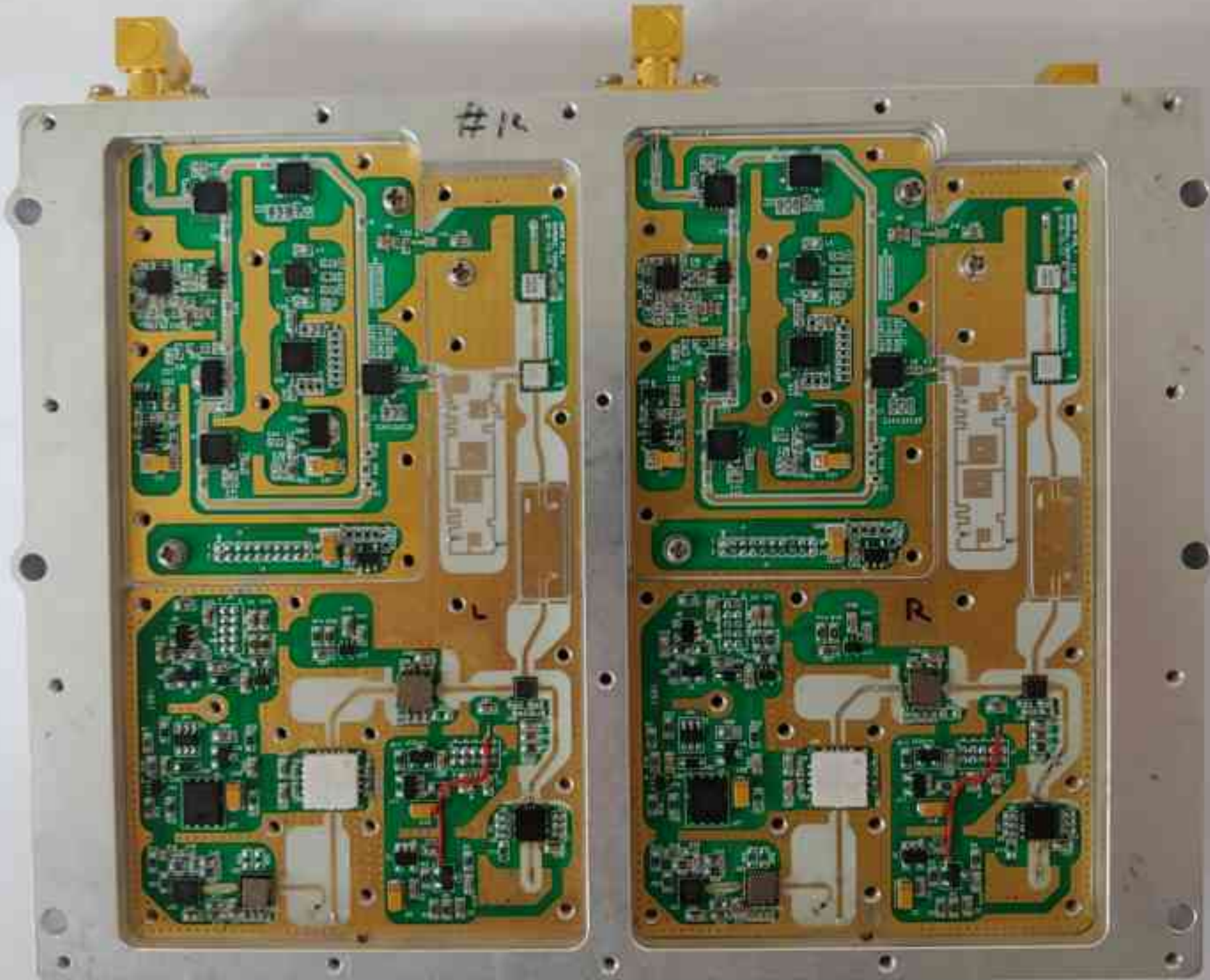


R
M

R
H


R
S

R
7



#12

R



UT-5GR1-DU19040002

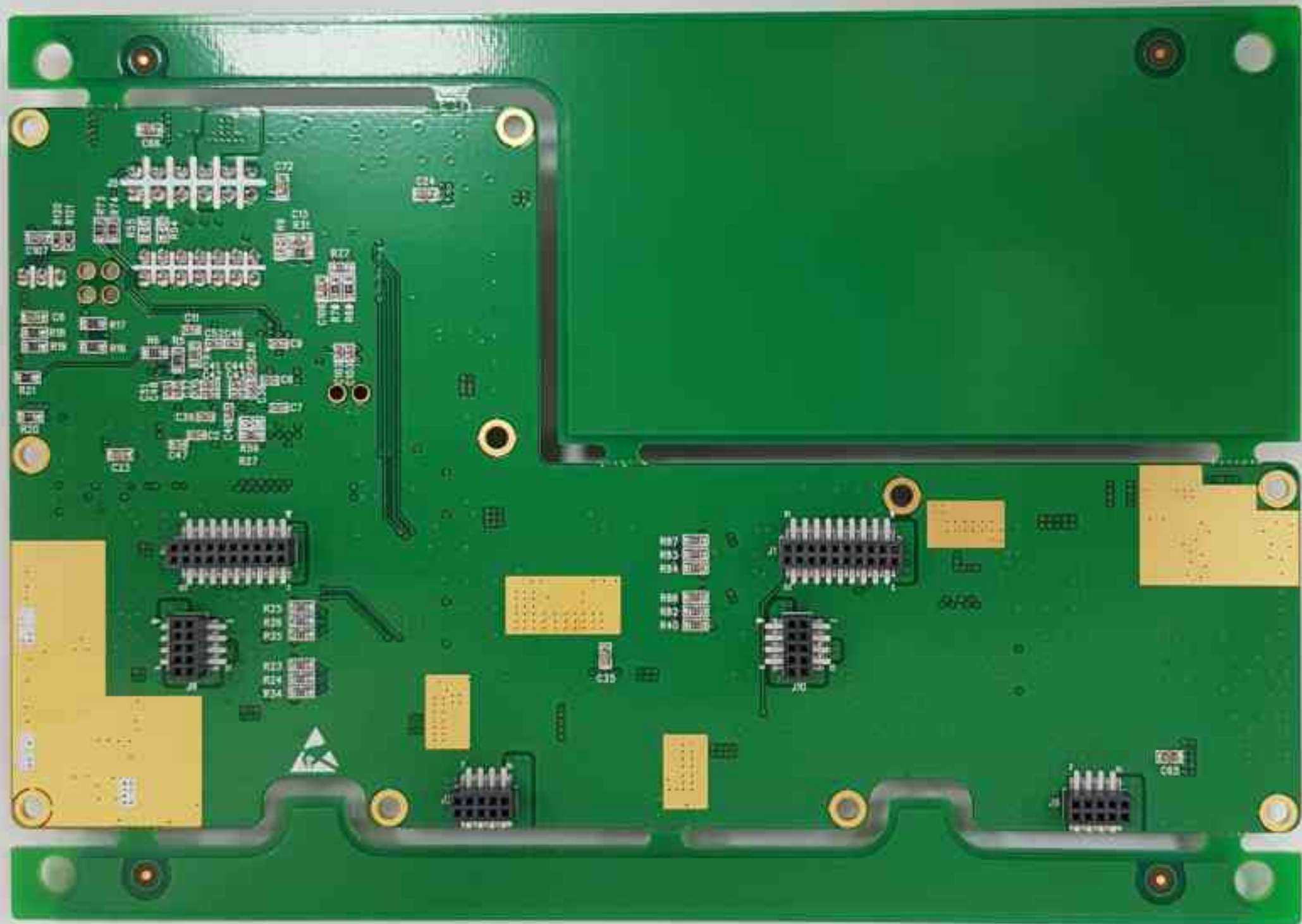
The image shows a silver metal component, likely a microcontroller or sensor module, with a brass connector on the left side. A white label is affixed to the top surface, displaying the part number 'UT-5GR1-DU19040002'. The component has several pins or connectors on its top surface, including a prominent brass connector on the left and several smaller silver pins on the right. The background is a solid teal color.

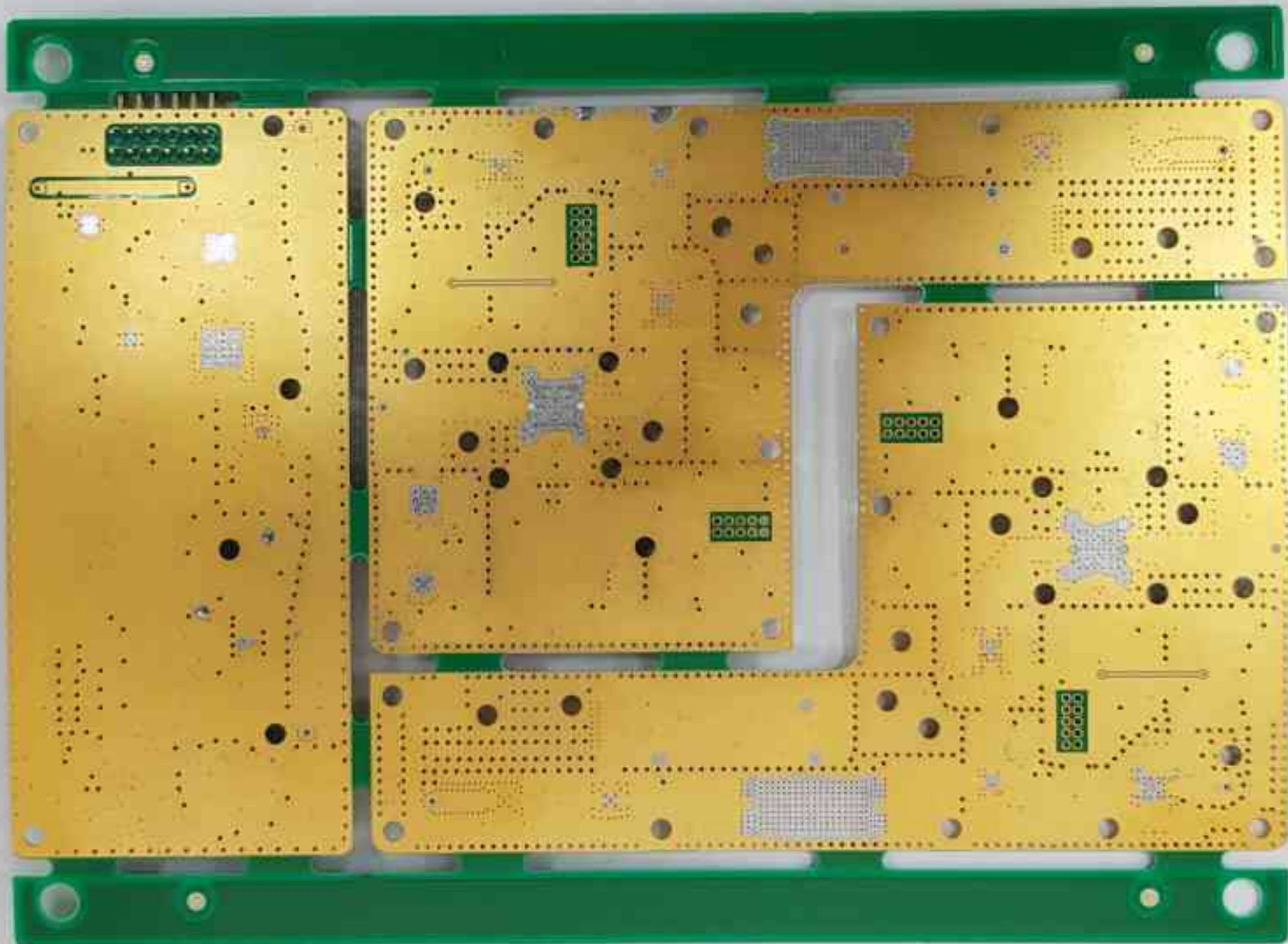


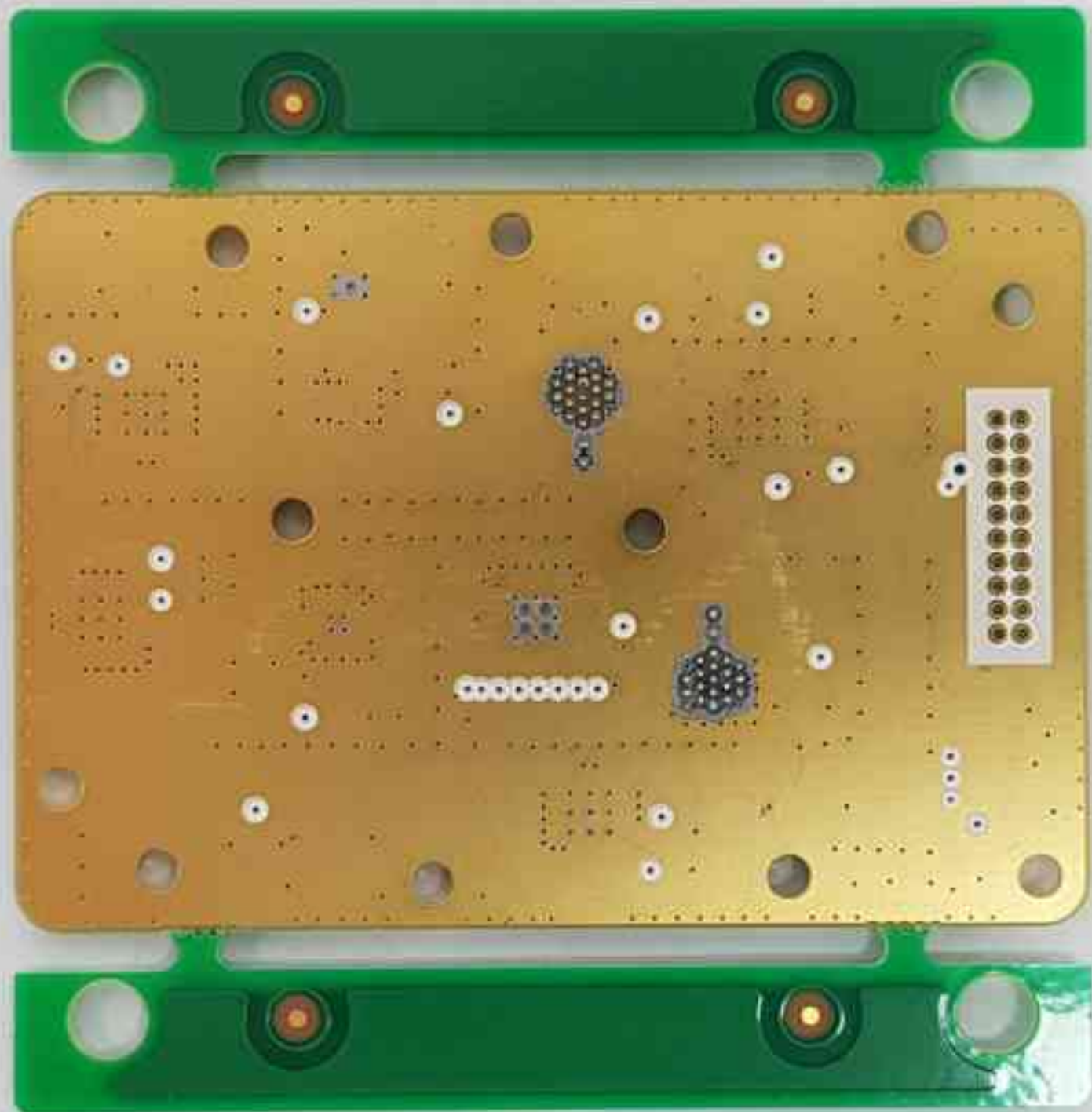




UT-5GR1-DU19040002













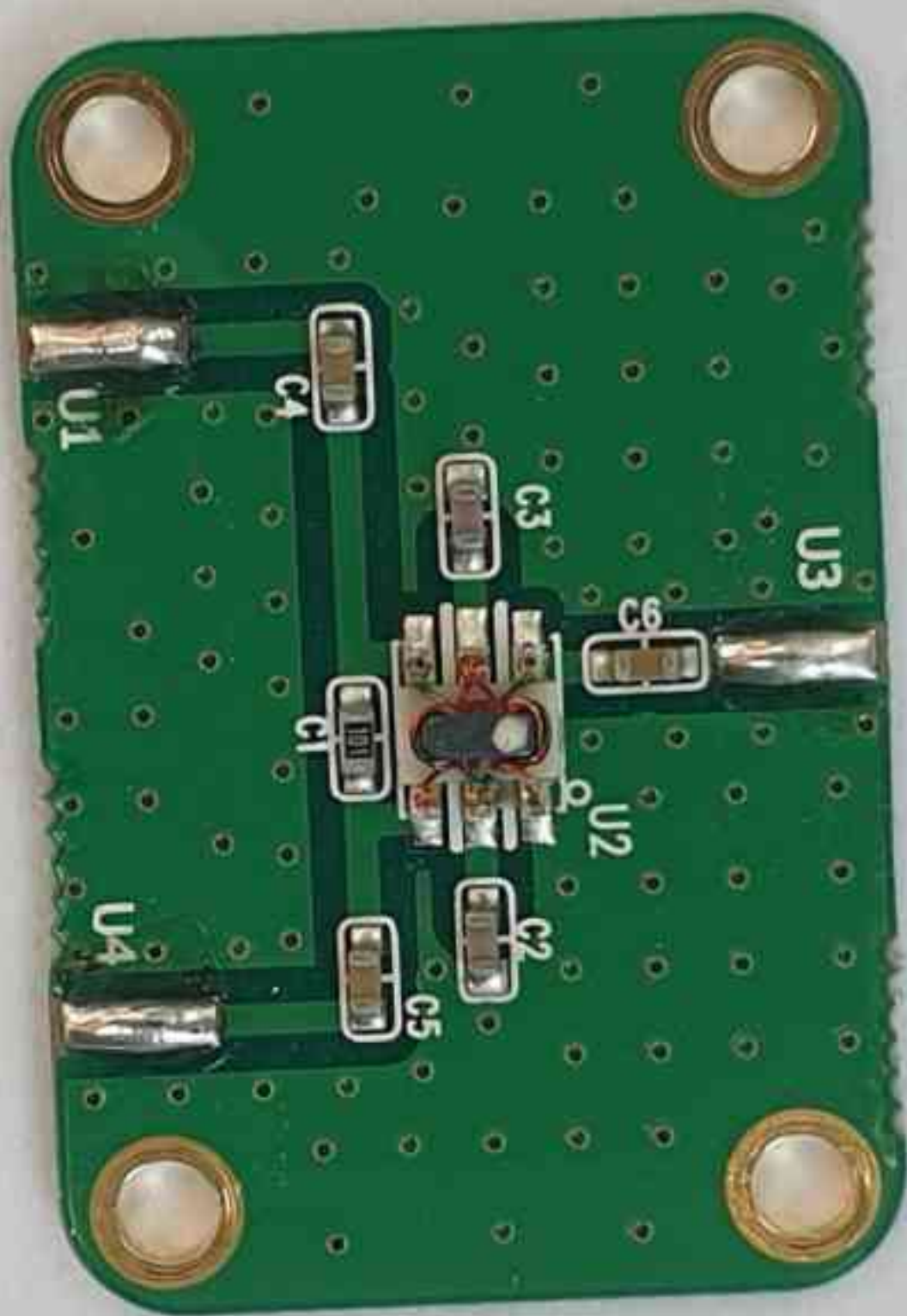


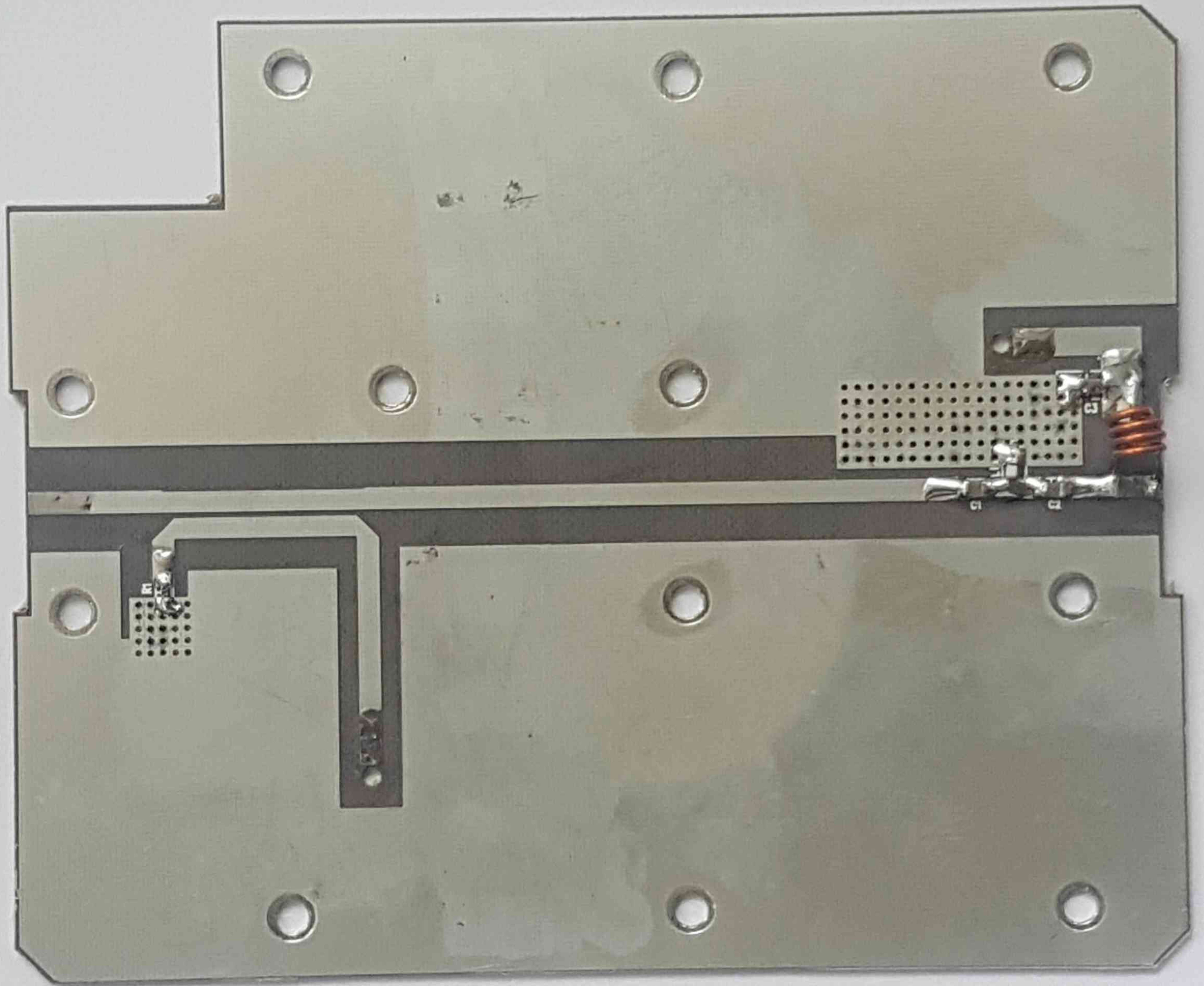






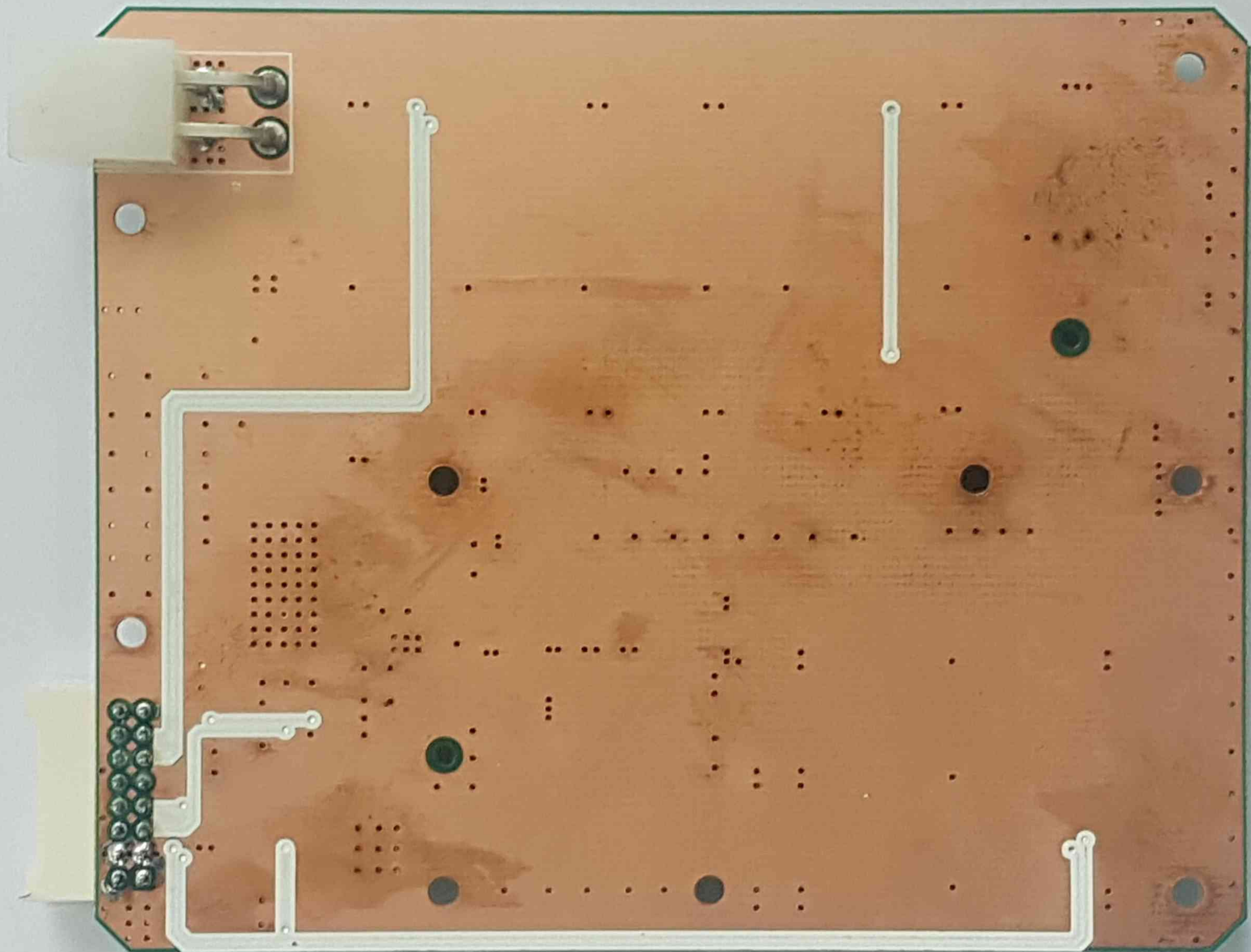


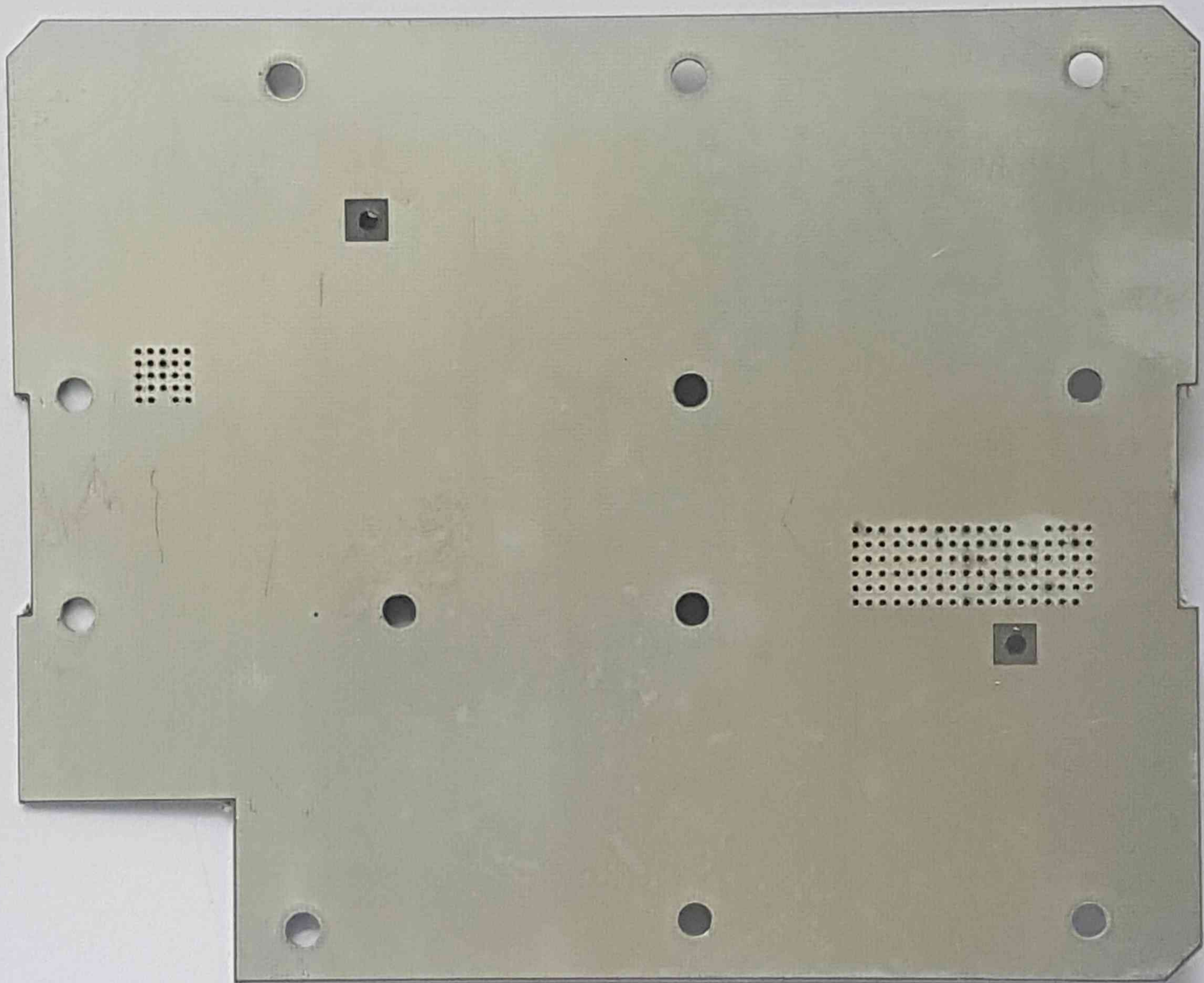


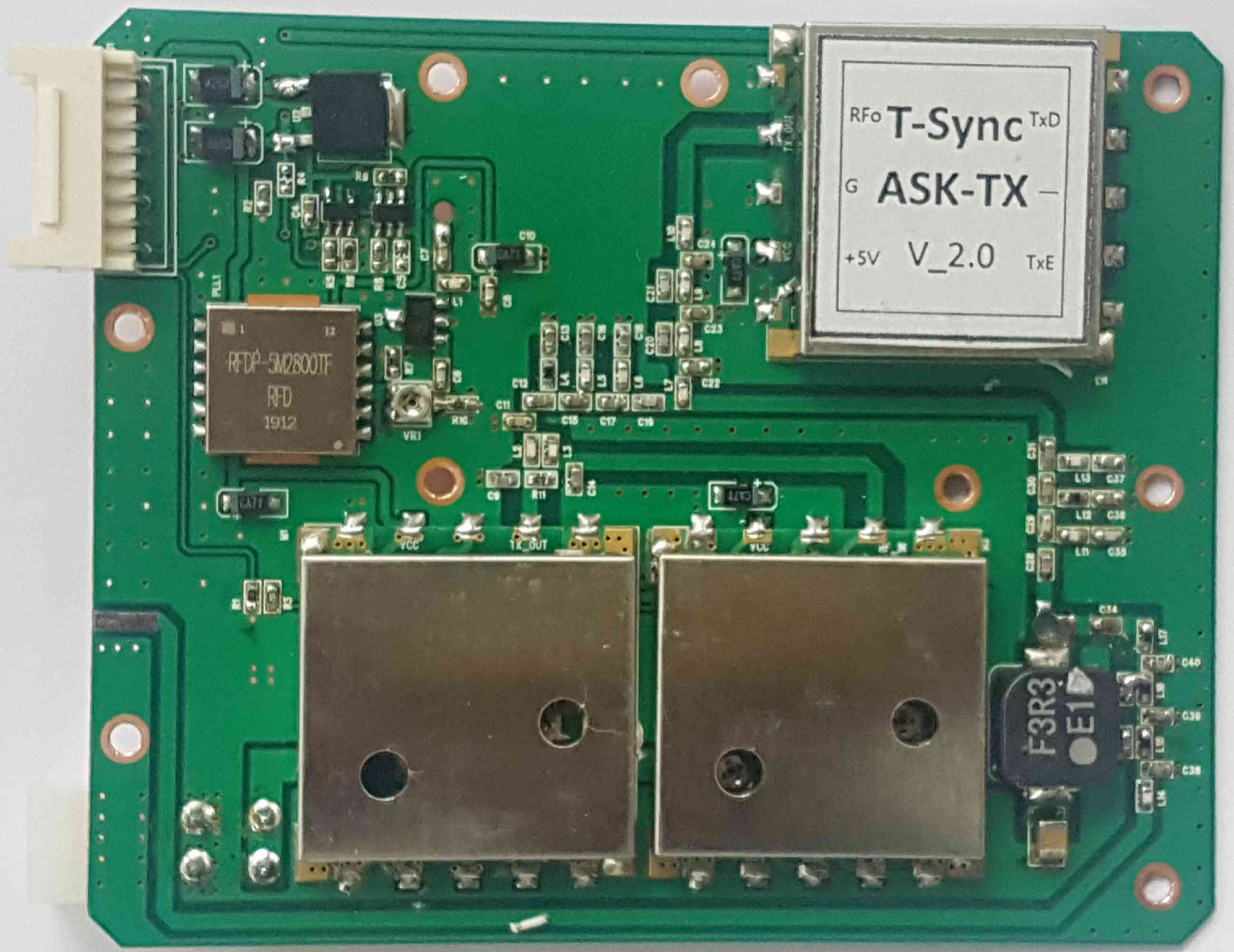












RFD1912
RFD
RFD5M2800TF

RFO T-Sync TxD
G ASK-TX
+5V V_2.0 TxE

VCC TX_OUT

VCC RF_N

F3R3
E1

C37
C38
C39

C40
C39
C38



RTCMDBU-1940025





OUT

+VDC
BIAS
RF IN 10MHZ





Rf0 T-Sync TxD
G ASK-TX -
+5V V_2.0 TxE

