



Raspberry Pi Trading
 Maurice Wilkes Building
 Cowley Road
 Cambridge
 CB4 0DS

Web
<http://raspberrypi.com>

18 October 2021

Antenna Use in Raspberry Pi Products Antenna Emission Response

Product Name	Antenna Type	Manufacture Part Number	Reference in this Document
Raspberry Pi Model 3A+ Raspberry Pi Model 3B+ Raspberry Pi Model 4B Raspberry Pi Compute Module 4 Raspberry Pi400 Raspberry RMO	ProAnt 2.4G + 5G Niche antenna	PRO-LIC-1020	Appendix C

1. Test Value

2.4GHz

频率	2.4GHz	2.45GHz	2.5GHz
PK (Gain) dBi	3.02	3.13	3.21
AVG (Gain) dBi	0.98	1.13	1.22

5GHz

频率	5.1GHz	5.3GHz	5.8GHz
PK (Gain) dBi	3.21	3.01	3.21
AVG (Gain) dBi	1.67	1.58	1.66

Appendix C ProAnt Niche Antenna PRO-LIC-1020 at 2.4GHz and 5GHz

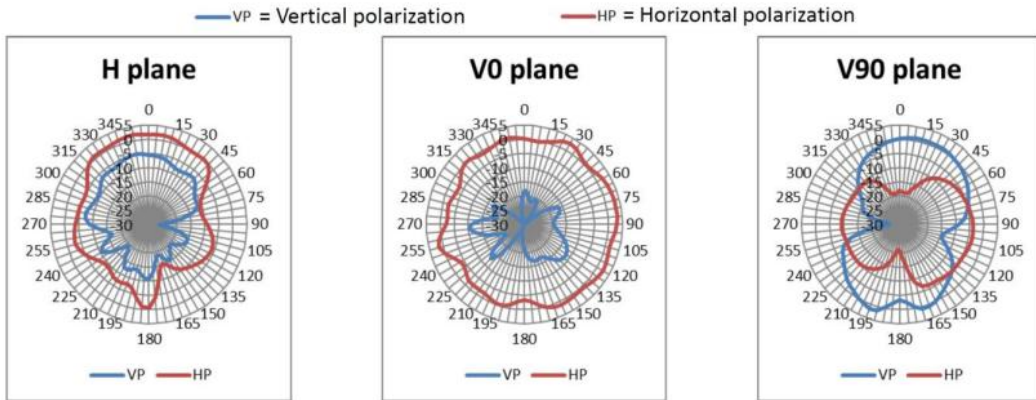


Figure 7 Niche Antenna 2.4 GHz Operation

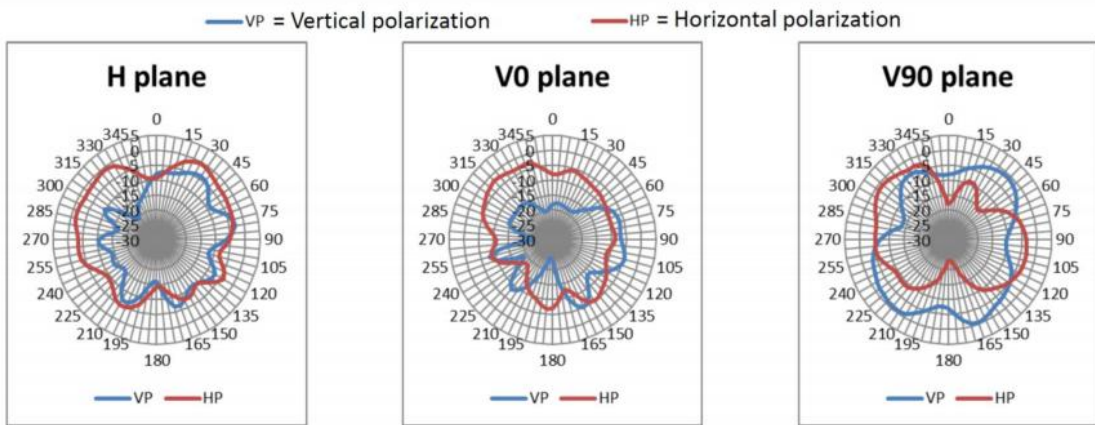


Figure 8 Niche Antenna 5GHz Operation

The Antenna can be identified on the board as follows:

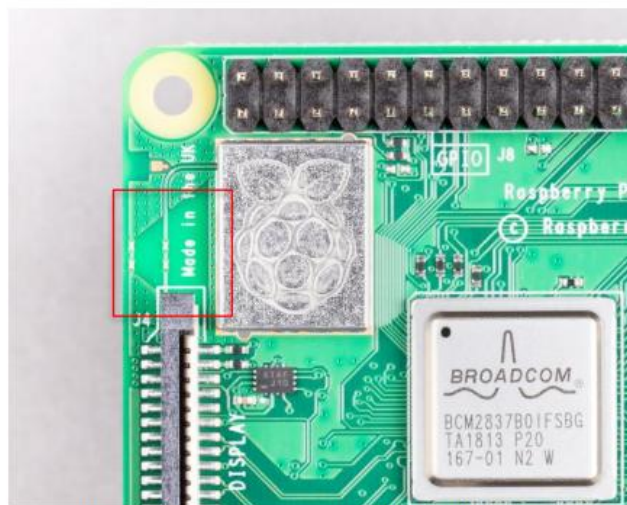


Figure 9 Niche Antenna PCB Example 2.4GHz and 5GHz