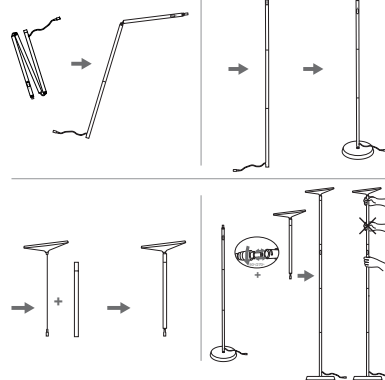


Product Diagram

- ① Lamp Head
- ② Universal Joint
- ③ Pole Section # 4
- ④ Pole Section # 3
- ⑤ Pole Section # 2
- ⑥ Pole Section # 1
- ⑦ Base
- ⑧ Power Connector

Assembly and Disassembly



Note:

- Remove the plastic rings before installing the lamp.
- When connecting the lamp sections with the base or the lamp head, rotate in different directions with both hands. Do not screw with too much force. If it gets stuck, undo and restart again.
- Align the male connector with the female connector, then click and rotate 90° or 270° to lock in place.

How to Use



Standby Mode

Connect the cable connector from Section #1 to the power adapter. Plug the adapter into a power source. The lamp enters standby mode, and the Power Indicator on the Power Button lights up in white.

Power On / Off

Tap the Power / Brightness Button to turn on the lamp. The LED Indicator turns off.

Memory Function

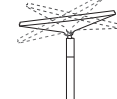
With the power connected, each time the lamp is turned on, it will automatically return to the brightness of the last time it was turned off.

Brightness Adjustment

When the lamp is turned on, tap and hold the Power / Brightness Button to adjust the brightness. Keep tapping on the Power / Brightness Button to increase or decrease its brightness.

Adjust the Lamp Head

The lamp head is 20° rotatable in horizontal 360° directions.



Specifications

| | |
|-------------------|----------------|
| Model | TT-DL03S |
| Light Source | LED |
| Operate Voltage | DC 24V / 1A |
| Power | 30W |
| Color Temperature | 3000K±250K |
| Lumens | 1400 - 1500 lm |
| CRI | > 80 |

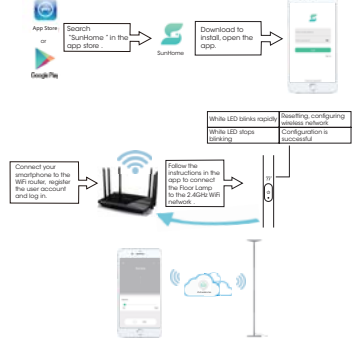
Caution

- Please do not dismantle the product by yourself, always ask a professional electrician or authorized technician for repairs.
- If you smell a bad odor or anything unusual, please turn off the unit immediately.
- Please do not remove the power cable with wet hands as it may cause an electric shock.
- Do not put this unit near extreme heat sources, moisture, or corrosive substances.
- Clean the lamp with a dry cloth when needed.
- Please store the lamp in a dry and shady place if not being used for a long period of time.
- Use the original power adapter to power the lamp. A wrong input may damage the lamp.

Smartphone App Control

How to use

Smartphone Control



Voice Control

Follow the Smartphone Control section above to configure the lamp with the WiFi router, then set up your Alexa as below to command and use the lamp through voice control.



TECHNOLOGY ENHANCES LIFE

TT TaoTronics
 www.taotronics.com

NORTH AMERICA
 E-mail : support@taotronics.com(US)
 support.ca@taotronics.com(CA)
 Tel : 1-888-456-8468 (Monday-Friday: 9:00 - 17:00 PST)
 US Importer: SUNVALLEYTEK INTERNATIONAL INC.,
 46724 Lakeview Blvd, Fremont, CA 94538

FCC Radiation Exposure Statement:

This equipment complies with FCC radiation exposure limits set forth for an uncontrolled environment. This equipment should be installed and operated with minimum distance 20cm between the radiator & your body.

FCC Warning

This device complies with Part 15 of the FCC Rules. Operation is subject to the following two conditions:

(1) This device may not cause harmful interference, and (2) this device must accept any interference received, including interference that may cause undesired operation.

NOTE 1: This equipment has been tested and found to comply with the limits for a Class B digital device, pursuant to part 15 of the FCC Rules. These limits are designed to provide reasonable protection against harmful interference in a residential installation. This equipment generates, uses and can radiate radio frequency energy and, if not installed and used in accordance with the instructions, may cause harmful interference to radio communications. However, there is no guarantee that interference will not occur in a particular installation. If this equipment does cause harmful interference to radio or television reception, which can be determined by turning the equipment off and on, the user is encouraged to try to correct the interference by one or more of the following measures:

- Reorient or relocate the receiving antenna.
- Increase the separation between the equipment and receiver.
- Connect the equipment into an outlet on a circuit different from that to which the receiver is connected.
- Consult the dealer or an experienced radio/TV technician for help.

NOTE 2: Any changes or modifications to this unit not expressly approved by the party responsible for compliance could void the user's authority to operate the equipment.