

## BWA19WI702 说明书设计

尺寸：70 x 70 mm

折页

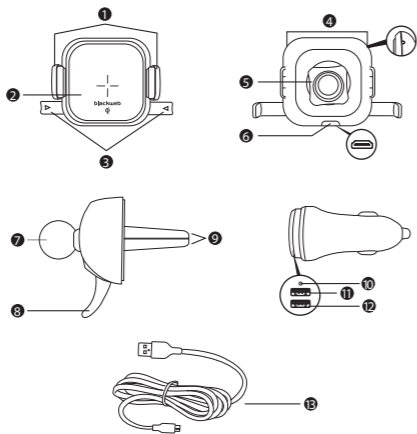
材质：80g书写纸

**提示：请勿擅自改动设计版式或装订方式。  
材质有特殊要求者/任何问题请及时沟通  
修改，谢谢。**



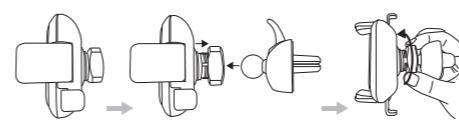
WIRELESS CHARGING CAR MOUNT  
Model: BWA19WI702

### Product Diagram

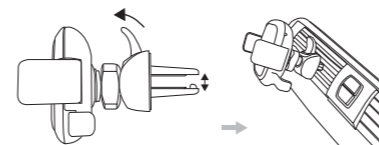


1. Cradle Locking Side Arms
2. Fast Clamping Button / Wireless Charger
3. Cradle Release Bars
4. Charging Indicators
5. Stabilizing Nut
6. Micro USB Port
7. Ball Joint
8. Clamp Lock
9. Air Vent Blade Clamp
10. Car Charger / Indicator  
(Green: Fast Charging; Blue: Standard Charging)
11. USB A Output: Quick Charge 3.6V-6.5V/3A, 6.5V-9V/2A, 9V-12V/1.5A  
(Green)
12. USB A Output: 5V/2.4A (White)
13. Micro USB Cable

### Mounting & Using the Phone Holder

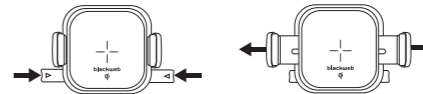


Loosen the stabilizing nut, insert the ball joint, and then tighten the nut to lock in place



Press down the clamp lock, insert the clamp onto your air vent blade, and release the lock to secure in place

Note: Rotate the ball joint to fit the clamp into horizontal or vertical blades.

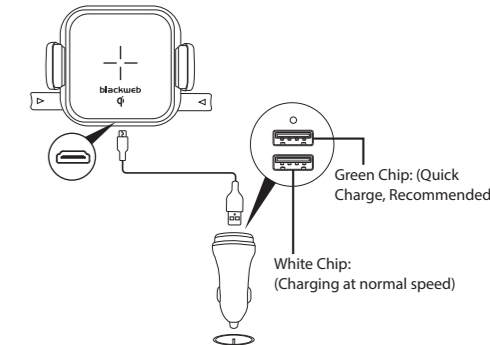


Squeeze the cradle release bars to open the locking side arms. Place your phone against the Fast Clamping Button to close the arms against your device.



Rotate the ball joint to obtain your best viewing angle

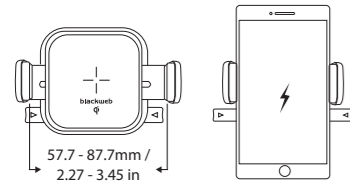
### Powering the Wireless Charger



1. Connect the micro USB cable into the charging port.
2. Insert the USB port into a car charger. The wireless charger LED indicator will turn on blue for 10 seconds indicating a successful connection.

Green Chip: (Quick Charge, Recommended)

White Chip: (Charging at normal speed)



Charging will start automatically with a right connection and the charging indicators will light up accordingly.

Charging Indicators	Working Status
Turns blue for 10 seconds, then turns off	Standby
Turns on solid blue	Charging a compatible device
Blue indicator turns off	Device fully charged
Flashes red	FOD (Foreign Object Damage) alarm

Position your phone so that back-center aligns with Fast Clamping Button. The arms will automatically close against your device upon a slight push against the clamp trigger.

Note:

- Line up the center of phone with the charging coils to achieve efficient charging.
- Phone cases more than 0.2 inch / 0.5 cm thick will not be detected. Remove before charging.

**Specifications**

<b>Model</b>	<b>BWA19WI1702</b>
Input (Wireless Charger)	5V/2A, 9V/2A
Output (Wireless Charger)	10W Max( Android) 7.5W Max(iPhone)
Micro USB Cable Length	3 ft / 91.4 cm
Dual Port Car Charger	Input: DC 12V - 24V Output 1: DC 5V/2.4A Output 2: DC 3.6V-6.5V/3A, 6.5V-9V/2A, 9V-12V/1.5A

**Caution**

- The charging process may give off heat so your device will become warm. Use only in cool environments.
- If the product gets wet, please stop the charging process immediately and remove all plugs. Do not use it before it's completely dry.
- Do not drop, knock, or squeeze the product.
- Do not dismantle or throw the product in fire or water to avoid causing short circuit leakage.
- Do not use the wireless charger in severely hot, humid, or corrosive environments to avoid circuit damage and leakage.
- Do not use the charger if it has excessive dents, punctures, damages, or deformities.
- Do not place close to magnetic stripe or chip card (ID card, bank cards, etc.) to avoid magnetic failure.
- Make sure the back of your phone or phone case is even without foreign metal objects.
- Keep at least 20 cm / 7.9 in away from implantable medical devices (pacemakers, implantable cochlear, etc.) to avoid potential magnetic interference.
- Keep away from children.

**NOTE:**

This equipment has been tested and found to comply with the limits for a Class B digital device, pursuant to part 15 of the FCC Rules. These limits are designed to provide reasonable protection against harmful interference in a residential installation. This equipment generates uses and can radiate radio frequency energy and, if not installed and used in accordance with the instructions, may cause harmful interference to radio communications. However, there is no guarantee that interference will not occur in a particular installation. If this equipment does cause harmful interference to radio or television reception, which can be determined by turning the equipment off and on, the user is encouraged to try to correct the interference by one or more of the following measures:

- Reorient or relocate the receiving antenna.
- Increase the separation between the equipment and receiver.
- Connect the equipment into an outlet on a circuit different from that to which the receiver is connected.
- Consult the dealer or an experienced radio/TV technician for help

Caution: The user is cautioned that changes or modifications not expressly approved by the party responsible for compliance could void the user's authority to operate the equipment.

This device complies with Part 15 of the FCC Rules. Operation is subject to the following two conditions:

(1) this device may not cause harmful interference, and(2) this device must accept any interference received, including interference that may cause undesired operation.

FCC Radiation Exposure Statement:  
This equipment complies with FCC radiation exposure limits set forth for an uncontrolled environment. This equipment should be installed and operated with a minimum distance of 20cm between the radiator and your body.This transmitter must not be co-located or operating in conjunction with any other antenna or transmit

The 'Qi' symbol is a trademark of the Wireless Power Consortium.