



www.hootoo.com

### ASIA PACIFIC

E-mail: support.jp@hootoo.com (JP)

JP Importer: 株式会社SUNVALLEY

Address: JAPAN 〒104-0032東京都中央区八丁堀 3 丁目18-6  
PMO京橋東 9 F

### EUROPE

E-mail:

support.uk@hootoo.com (UK)

support.de@hootoo.com (DE)

support.fr@hootoo.com (FR)

support.es@hootoo.com (ES)

support.it@hootoo.com (IT)

EU Importer: ZBT International Trading GmbH

Address: Halstenbeker Weg 98C, 25462 Rellingen, Deutschland

### NORTH AMERICA

E-mail: support.ca@hootoo.com (CA)

support@hootoo.com (US)

Tel: 1-888-456-8468 (Monday-Friday: 9:00 – 17:00 PST)

US Distributor: SUNVALLEYTEK INTERNATIONAL INC.

Address: 46724 Lakeview Blvd, Fremont, CA 94538

### MANUFACTURER

Manufacturer: Shenzhen NearbyExpress Technology  
Development Co.,Ltd.

Address: 333 Bulong Road, Shenzhen, China, 518129



MADE IN CHINA

HT-BS012\_V1.6



MODEL: HT-BS012  
Barcode Scanner  
**User Guide**

<b>Important</b>	01
<b>Know Your Barcode Scanner</b>	01-05
What's in the Box	01
Product Diagram	02
Specifications	03
Scan Aiming	04
Decode Zoom	05
<b>Get Started</b>	05-07
Power On / Off	05
Charge the Barcode Scanner	05-06
LED Indicator & Beeper	06
Pair the Scanner with a Device	07
<b>Set Your Barcode Scanner</b>	08-15
Normal Mode	08
Inventory Mode	08-09
Set Sleep Timer	09-10
Set Power off Time	10
Scanner Sound Setting	10-11
Same Code Delay Time Setting	11
Reading Setting	12
Code Suffix / Prefix Setting	12-13
Code ID Table	13
USB Receiver Setting	14
Language	15
<b>Code Symbol On / Off</b>	16-18
<b>Troubleshooting</b>	19

## Important

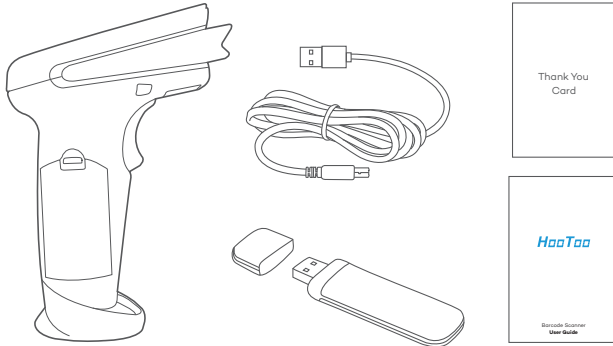
Regularly clean the scanning window for better scanning accuracy

- Keep the window away from any abrasive material
- Remove any dirt particles with a damp cloth
- Wipe the window using a tissue moistened with ammonia / water
- Do not spray water or other cleaning liquids directly into the window

## Know Your Barcode Scanner

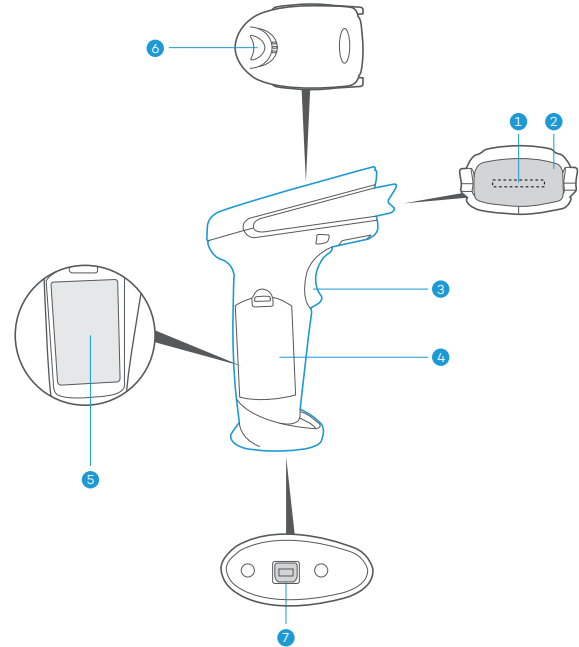
The HooToo barcode Scanner combines top scanning performance and excellent ergonomics to provide the best value in a lightweight laser scanner. Whether used as a hand-held scanner or hands-free in a stand, the scanner ensures comfort and ease of use for extended periods of time.

## What's in the Box



- 1 x HooToo 2.4GHz Wireless Barcode Scanner
- 1 x Charging / Data Cable
- 1 x Thank You Card
- 1 x User Guide
- 1 x 2.4GHz Wireless Receiver

## Product Diagram



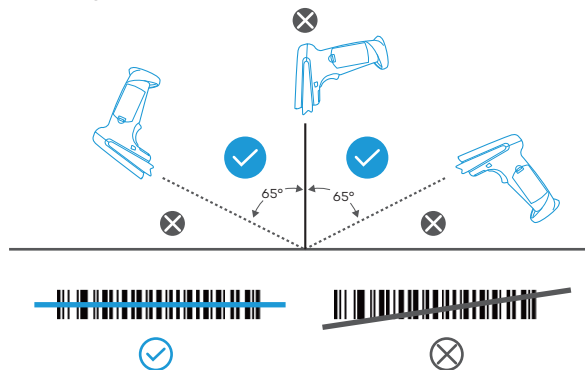
1. Scan Lens
2. Laser Diode
3. Trigger
4. Battery Compartment
5. Battery
6. LED Indicator
7. Charging / Data Port

## Specifications

Communication Distance	7 to 10 m / 22.9 to 32.8 ft
Communication Protocol	2.4Ghz Wireless and Wired
Compatibility	MAC OS, Windows, Linux etc
Data Memory	16MB Flash
Scanning Type	Single / Continuous / Automatic Scan
Source	LED (622nm – 628nm)
Max Scanning Speed	200 times / second
Decoding Accuracy	3.3mil
Depth of Focus	3.3mil: 2mm – 100mm 10mil: 2mm – 350mm 15mil: 5mm – 500mm 30mil: 10mm – 600mm
Processor	32-bit Decoder
Print Contrast	Minimum reflectivity of 30%
Working Current	Decoding: 40mA
	Working: 20mA
	Standby: 5mA
	Shutdown: 1.8uA
Battery	750mAh
Charging Input	5V 500mA
Charging Time	1.5 hours
Service Time	30 hours
Scan Mode	Wired / Wireless
Prompting Mode	Buzzer, LED Light
Error Rate	1/5000000

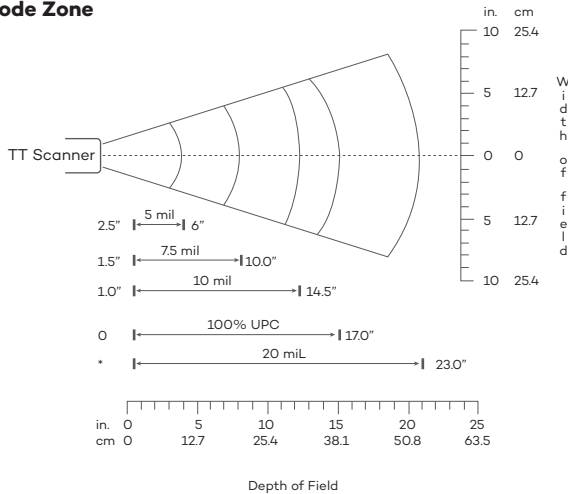
Scanning Angle	Rotation Angle: $\pm 42^\circ$ Oblique Angle: $\pm 65^\circ$ Deflecting Angle: $\pm 65^\circ$
Decoding Ability	UPC-A, UPC-E, EAN-8, EAN-13, Code 128, Code 39, Code 39, Full ASCII, Codabar / NW7, Code 93, Code 11, MSI, Interleaved 25, Industrial 25, ISBN, ISSN, China Post etc. General one-dimensional codes
Receiver Mode	USB HID, USB Virtual Serial (Need to install drive and setup code), SPP

## Scan Aiming



**Note:** Do not hold the scanner directly over the barcode.

## Decode Zone



\*Minimum distance determined by symbol length and scan angle



**Note:** Typical performance at 75° on high quality symbols in normal room light.

## Get Started

### Power On / Off

Pressing the Trigger will turn on the scanner and make the laser appear.

The scanner will automatically shut off if detecting no operation in 30 seconds. You can also scan the following barcode to manually shut it off.



Shut Down

### Charge the Barcode Scanner

Simply connect the scanner with any USB power adapter via the included USB cable.

The LED light will flash red and blue alternately while the scanner is being charged.

05



### Note:

- Charge the scanner if the LED indicator flashes red 3 times as low battery alarm.
- Scan the barcode to learn about the battery status on your PC.



Battery Status

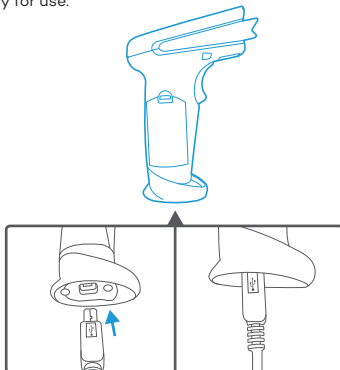
## LED Indicator & Beeper

Beeper	LED Indicator	Indication
3 beeps	Blue LED On	Power up with over 30% battery
3 beeps	Red LED flashes 3 times	Power up with battery lower than 30%
N/A	Red LED flashes 3 times	Power off with battery lower than 20%
N/A	Red LED flashes	Battery drained (Charge for 30 to 50 minutes, then power on again)
3 beeps	Red LED flashes, blue LED solid on	Pairing
2 beeps	Blue LED on	Paired (Power up then pair)
1 tick	Red LED on	Transmission error
1 short beep	Blue LED on	Code scanned and uploaded
1 beep	Blue LED on	Code scanned and saved in inventory mode
1 tick	Red LED on	Transmission error or insufficient space in inventory mode
2 beeps	N/A	Connected to host device in wired mode

## Pair the Scanner with a Device

### Wired Connection

1. Plug the cable connector into the data port on the bottom of the scanner handle.
2. Gently tug the cable to ensure the connector is properly secured.
3. Connect the other end of the interface cable to the host computer.
4. Your PC will install the driver automatically. Once the driver installation is completed, the scanner is ready for use.



Note:

Scan the following barcodes to switch from wireless into wired mode to enable / disable wired mode.



Wired Mode On \*



Wired Mode Off

### Wireless Connection

1. Disable the wired mode.
2. Plug the included wireless receiver into your host device.

### Return to default



## Set Your Barcode Scanner

### Normal Mode (\*)

Scan the barcodes directly, the decoded data will be transferred to the receiver and displayed on the PC or your host. A prompt sound will be heard if registration failed.



Normal Mode

### Inventory Mode

Inventory mode allows you to use the scanner without any connection to a host. The scanned codes will be stored in the built-in memory of the scanner. At the end of your work, scan the "Transfer Data" code to transfer the data to your PC or other host.



Inventory Mode



Transfer Data

Scan "Total Number of Data Entry" to check how many data is decoded



Total Number of Data Entry

After you transfer the data in inventory mode, scan "Clear Data" to clear the inventory data.



Clear Data

Transfer Speed Setting (Inventory Mode Only)



Fast



Standard



Slow

### Set Sleep Time



Sleep Time 10 Seconds



Sleep Time 20 Seconds



Sleep Time 5 minutes



Sleep Time 30 minutes



Sleep Time 30 Seconds



Sleep Time 60 Seconds



Sleep Time 2 Minutes



Sleep Time 10 Minutes



Sleep Time 20 Minutes



Stay Powering On

### Set Power Off Timer



Turn Off in 10 Seconds



Turn Off in 15 Minutes



Shut Down

### Scanner Sound Setting



Tone 0



Tone 1



Beeper Sound Off



Lower Beeper Volume



Medium Beeper Volume



High Beeper Volume

### Same Code Delay Time Setting

Set up the minimum delay time between decoding of the same codes:



Same code delay time 0 sec \*



Same code delay time 1 sec



Same code delay time 2 sec



Same code delay time infinite

### Scanner Reading Setting



Continuous Scan



Single Scan



Automatic Off



Automatic On



**Note:** When you use the automatic mode, the sleep time is set to 15 minutes.

### Code Suffix / Prefix Setting



CR



LF



CR+LF



Disable



Preamble - STX





Postamble - ETX



Add ID AS Prefix on



Add ID AS Prefix off \*

### Code ID Table

Code Type	ID	Code Type	ID	Code Type	ID
Code 39	a	UPC-A	b	UPC-E	c
EAN8	d	EAN13	e	ISBN	f
Code 128	g	Code93	h	Interleaved 2 of 5	i
Industrial 2 of 5	j	CODABAR	k	GS1 Data Bar	D
Code11	M	Code32	c	GS1 Expanded	E
China Post Code	y	MSI	l	GS1 Limited	L

## USB Receiver Setting (Functional with USB Cable Plugged in)

### 1. USB virtual serial



USB Virtual Serial



**Note:** to activate the USB virtual serial, you need to install the driver beforehand.

### 2. USB HID \*



USB HID \*



USB HID Fast (WINDOWS)



USB HID Slow (APPLE)

## Language Setting



UNITED STATES



FRANCE



SERBIA / YUGOSLAVIA



BELGIUM



GERMANY



SLOVENIA



BRAZIL



PORTUGAL



SPAIN



ITALY



UNIVERSAL

## Code Symbol On / Off

### CODE11



Enable \*



Disable

### CODE128



Enable \*



Disable

### CODE 39



Enable \*



Disable



FULL ASCII Enable



FULL ASCII Disable \*

**CODE 93**



Enable \*



Disable

**UPC-E**



Enable \*



Disable

**CODABAR**



Enable \*



Disable

**EAN - 13**



Enable \*



Disable

**Interleaved 2 of 5**



Enable \*



Disable

**EAN - 8**



Enable \*



Disable

**Industrial 2 of 5**



Enable \*



Disable

**CODE32**



Enable \*



Disable

**UPC-A**



Enable \*



Disable

**CODE32 Check Digit**



On



Off

## Troubleshooting

Problem	Possible Causes	Possible Solutions
Nothing happens when you operate the scanner as instructed, or the scanner performs abnormally (laser does not come on, scanner emits frequent beeps).	No power to the scanner.	Check the power connection. Ensure the power is connected if required for your configuration.
	Interface / power cables are loose.	Check for loose cable connections.
Laser comes on, but decoding fails	Scanner is not programmed for the barcode type.	Be sure to program the scanner to read the type of barcode you are scanning.
	Barcode is unreadable.	Check the barcode to make sure it is not defaced. Try scanning test barcodes of the same type.
	Scanning angle / distance is incorrect.	Move the scanner closer to or further from the barcode.
	The laser head is out of condition	Contact us for replacement
Barcode is decoded, but not transmitted to the host.	Scanner is not programmed for the correct host type.	Scan the appropriate host type barcode in page 14 of this manual.
	The scanner is out of condition	Contact us for replacement
Scanned data is incorrectly displayed on the host.	Scanner is not programmed to work with the host.	Check scanner host type in page 14 of this manual, make sure proper host is selected.

### FCC STATEMENT

This device complies with Part 15 of the FCC Rules. Operation is subject to the following two conditions:

- (1) This device may not cause harmful interference, and
- (2) This device must accept any interference received, including interference that may cause undesired operation.

Warning: Changes or modifications not expressly approved by the party responsible for compliance could void the user's authority to operate the equipment.

NOTE: This equipment has been tested and found to comply with the limits for a Class B digital device, pursuant to Part 15 of the FCC Rules. These limits are designed to provide reasonable protection against harmful interference in a residential installation. This equipment generates uses and can radiate radio frequency energy and, if not installed and used in accordance with the instructions, may cause harmful

interference to radio communications. However, there is no guarantee that interference will not occur in a particular installation. If this equipment does cause harmful interference to radio or television reception, which can be determined by turning the equipment off and on, the user is encouraged to try to correct the interference by one or more of the following measures:

Reorient or relocate the receiving antenna.

Increase the separation between the equipment and receiver.

Connect the equipment into an outlet on a circuit different from that to which the receiver is connected.

Consult the dealer or an experienced radio/TV technician for help.

### FCC Radiation Exposure Statement:

This equipment complies with FCC radiation exposure limits set forth for an uncontrolled environment. This equipment should be installed and operated with minimum distance 20cm between the radiator & your body.



### WEEE Compliance

Correct Disposal of This Product (Waste Electrical & Electronic Equipment) (Applicable in countries with separate collection systems)

This marking on the product, accessories or literature indicates that the product and its electronic accessories should not be disposed of with other household waste at the end of their working life. To prevent possible harm to the environment or human health from uncontrolled waste disposal, please separate these items from other types of waste and recycle them responsibly to promote the sustainable reuse of material resources. Household users should contact either the retailer where they purchased this product, or their local government office, for details of where and how they can take these items for environmentally safe recycling. Business users should contact their supplier and check the terms and conditions of the purchase contract. This product and its electronic accessories should not be mixed with other commercial wastes for disposal.