

Model: H-03

Test mode: 802.11b

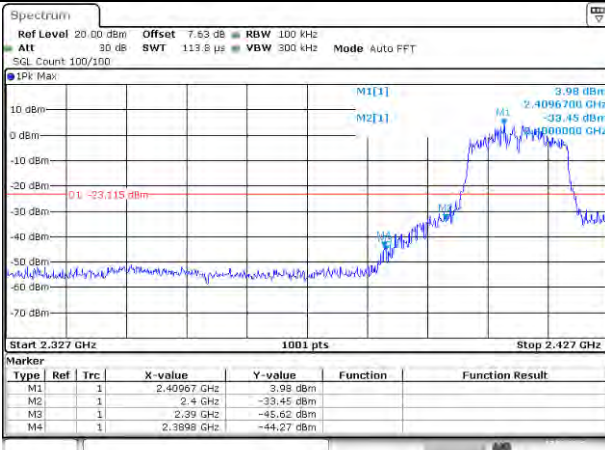


Lowest channel



Highest channel

Test mode: 802.11g

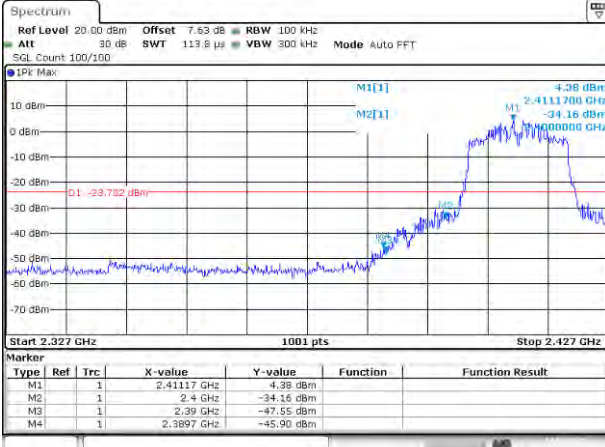


Lowest channel



Highest channel

Test mode: 802.11n(HT20)



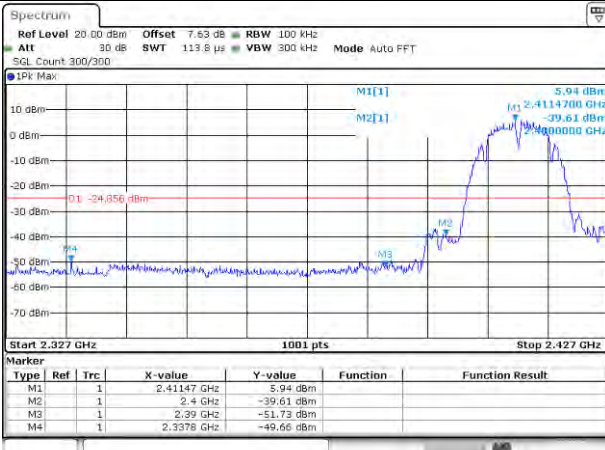
Lowest channel



Highest channel

Model: H-12P

Test mode: 802.11b

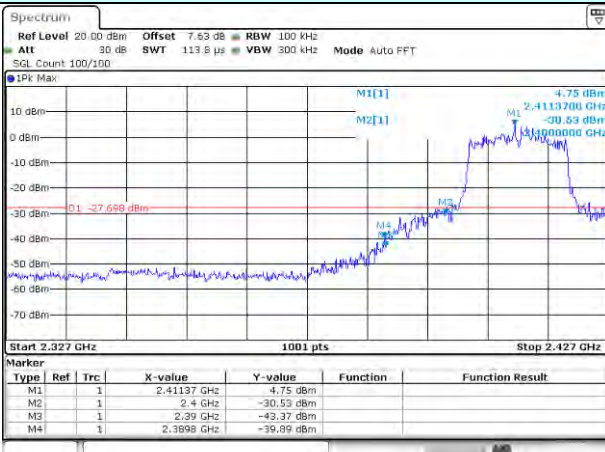


Lowest channel



Highest channel

Test mode: 802.11g

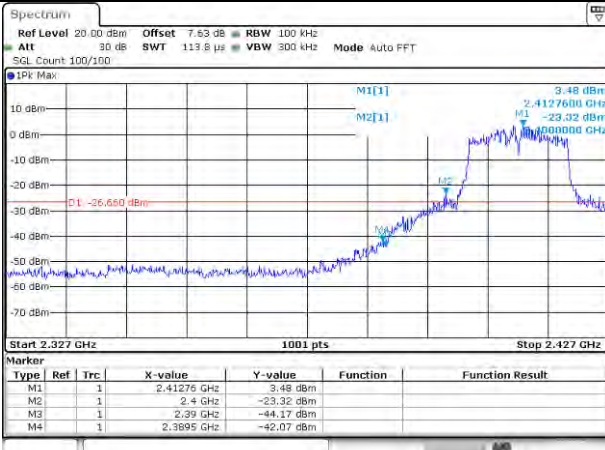


Lowest channel

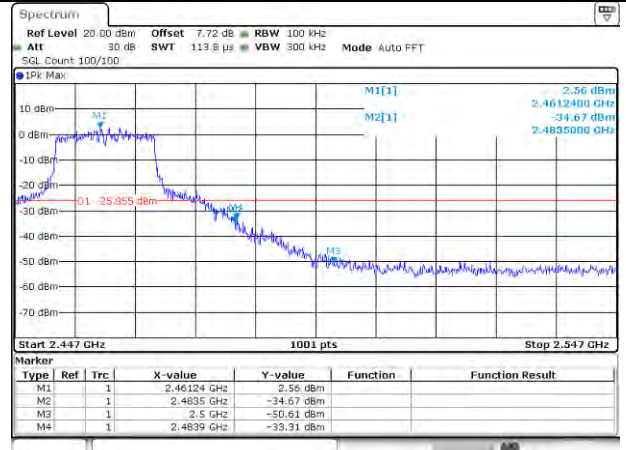


Highest channel

Test mode: 802.11n(HT20)



Lowest channel



Highest channel

## 9. FREQUENCY STABILITY

### 9.1. Test limit

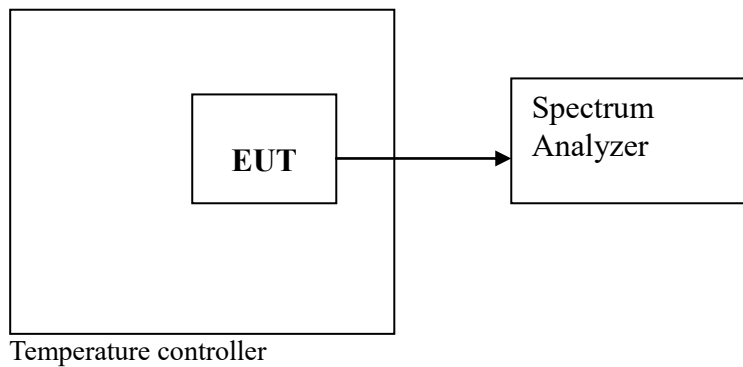
Please refer section RSS-Gen.

Regulation RSS-Gen If the frequency stability of the licence-exempt radio apparatus is not specified in the applicable RSS, the fundamental emissions of the radio apparatus should be kept within at least the central 80% of its permitted operating frequency band in order to minimize the possibility of out-of-band operation. In addition, its occupied bandwidth shall be entirely outside the restricted bands and the prohibited TV bands of 54-72 MHz, 76-88 MHz, 174-216 MHz, and 470-602 MHz, unless otherwise indicated.

### 9.2. Test Procedure

The following equipment are installed on the emission measurement to meet the commission requirements and operating regulations in a manner which tends to maximize its emission characteristics in normal application.

### 9.3. Test Setup



### 9.4. Test Results

Not applicable.

## **10. ANTENNA REQUIREMENT**

### **10.1. Standard Requirement**

An intentional radiator shall be designed to ensure that no antenna other than that furnished by the responsible party shall be used with the device. The use of a permanently attached antenna or of an antenna that uses a unique coupling to the intentional radiator shall be considered sufficient to comply with the provisions of this Section. The manufacturer may design the unit so that a broken antenna can be replaced by the user, but the use of a standard antenna jack or electrical connector is prohibited.

### **10.2. Antenna Connected Construction**

The antenna connector is unique antenna and no consideration of replacement. Please see EUT photo for details.

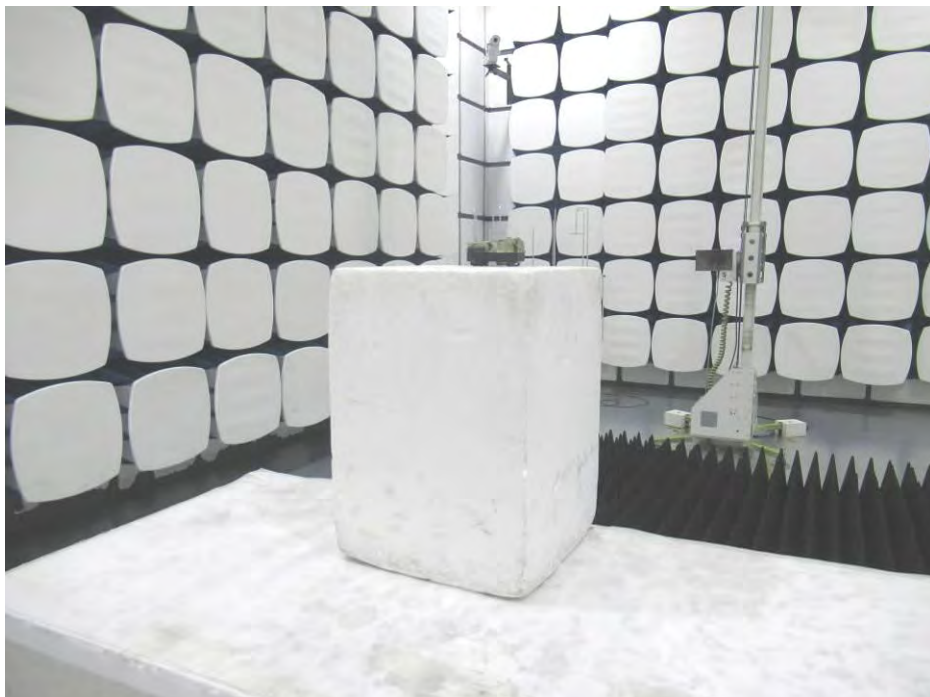
### **10.3. Results**

The EUT antenna is integrated antenna. It complies with the standard requirement.



## 11. TEST SETUP PHOTO

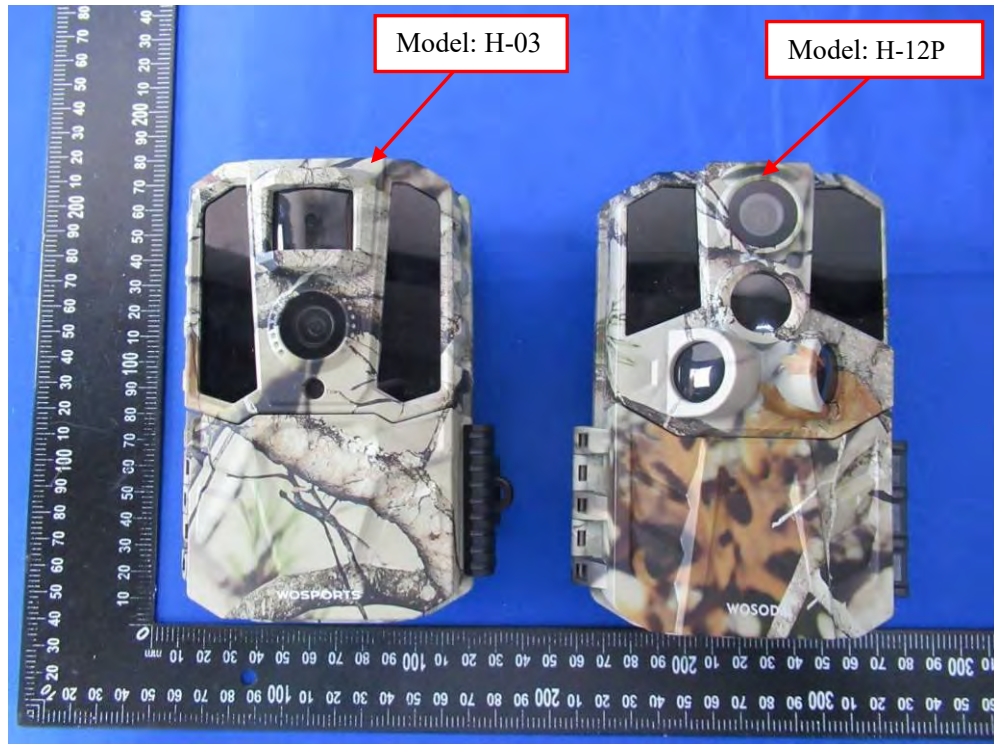
### 11.1. Photos of Radiated emission



### 11.2.Photos of Power Line Conducted Emission Test



## 12. PHOTOS OF EUT



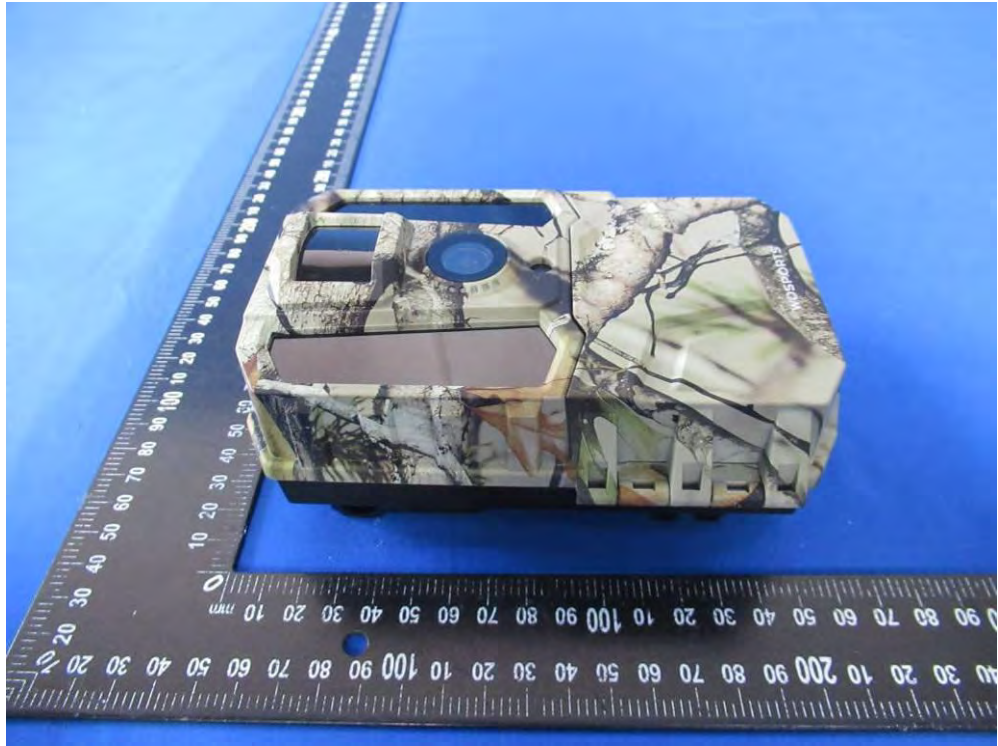
Model: H-03

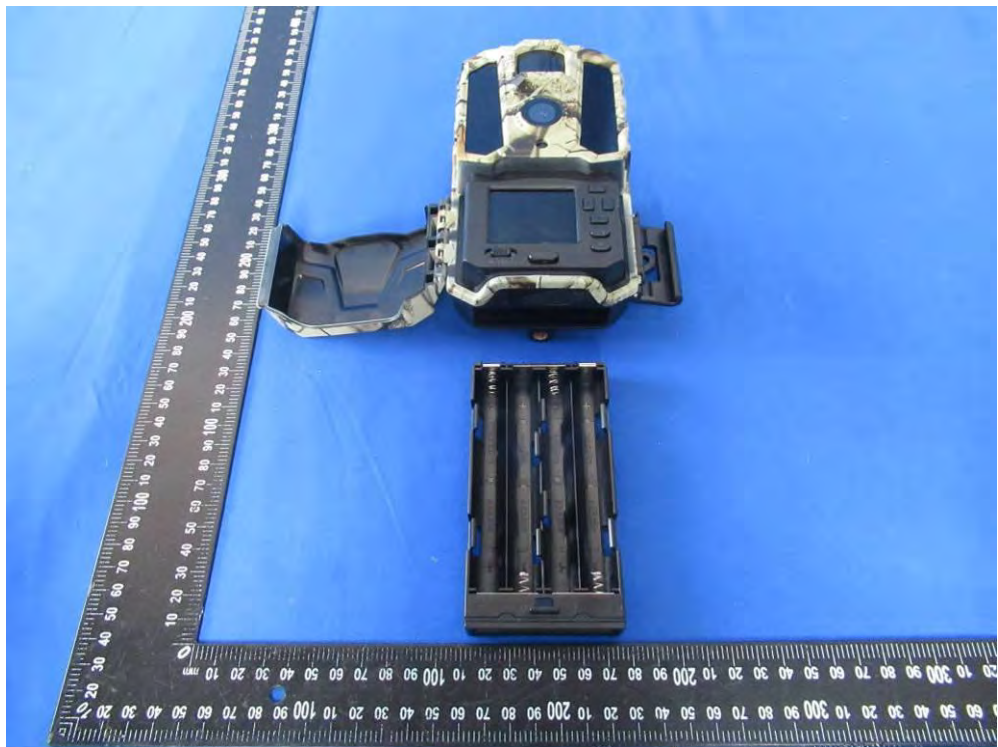








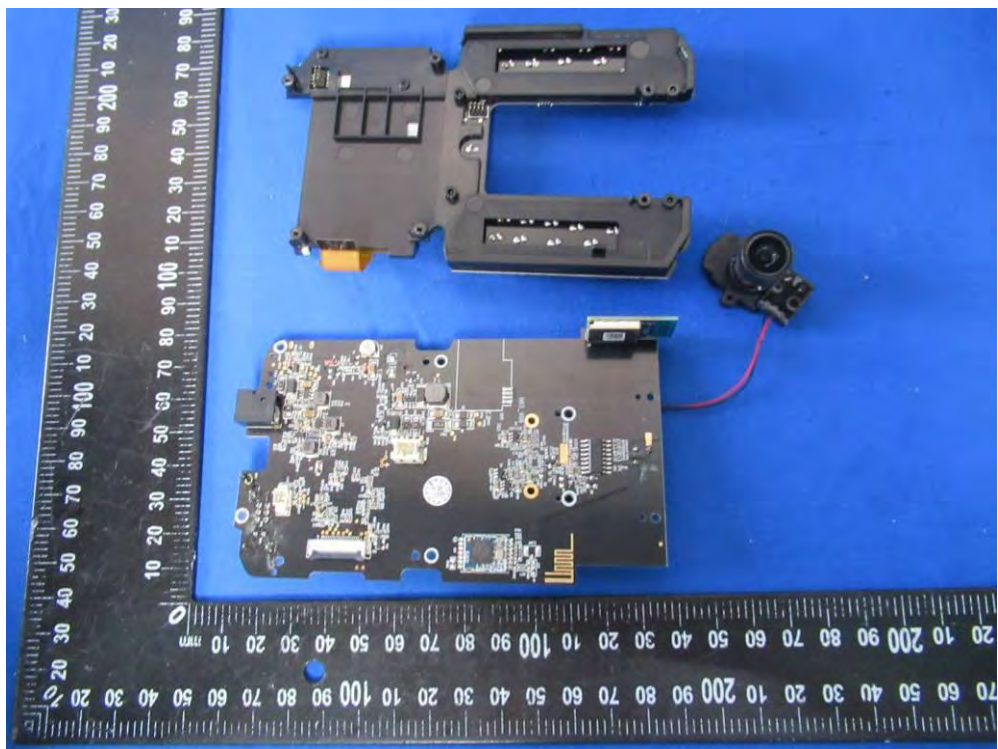
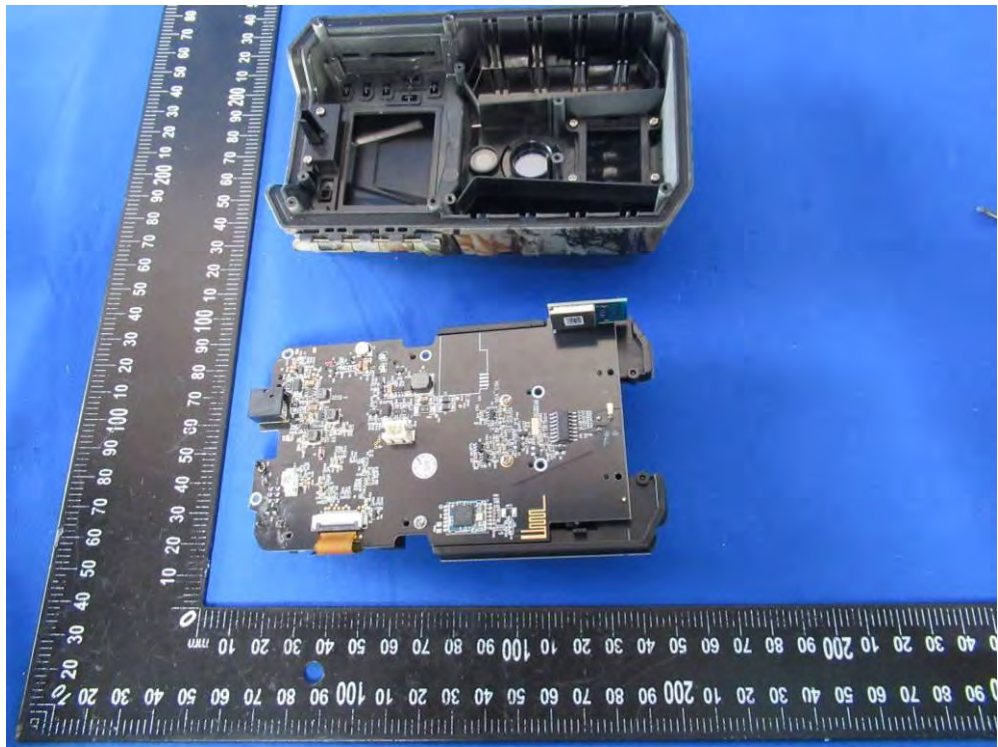


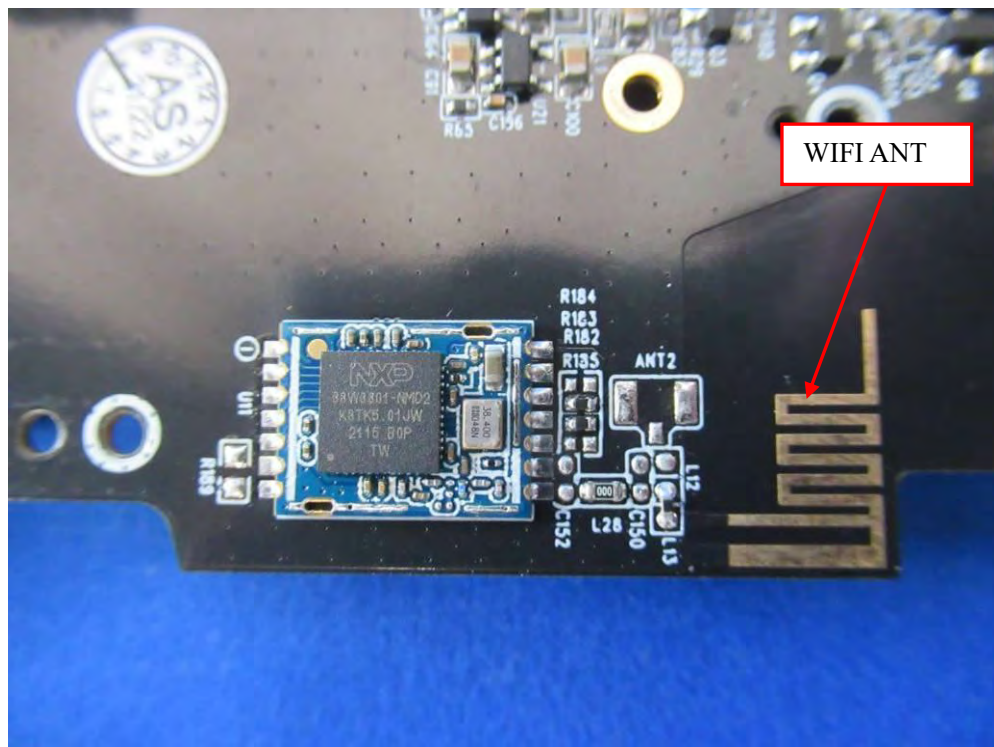
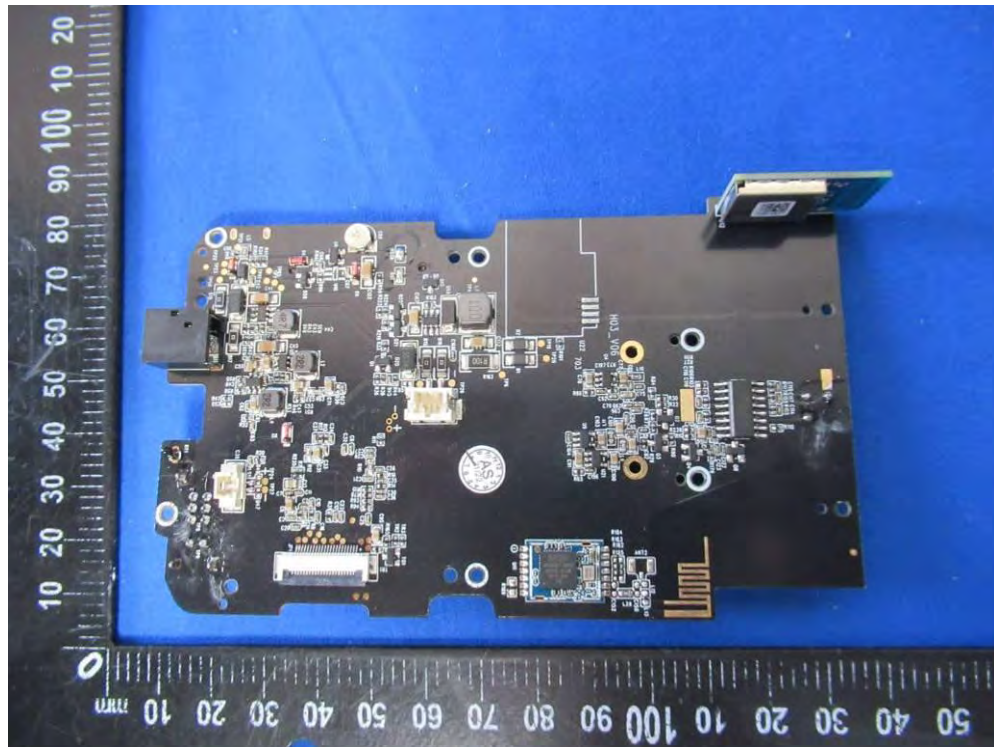




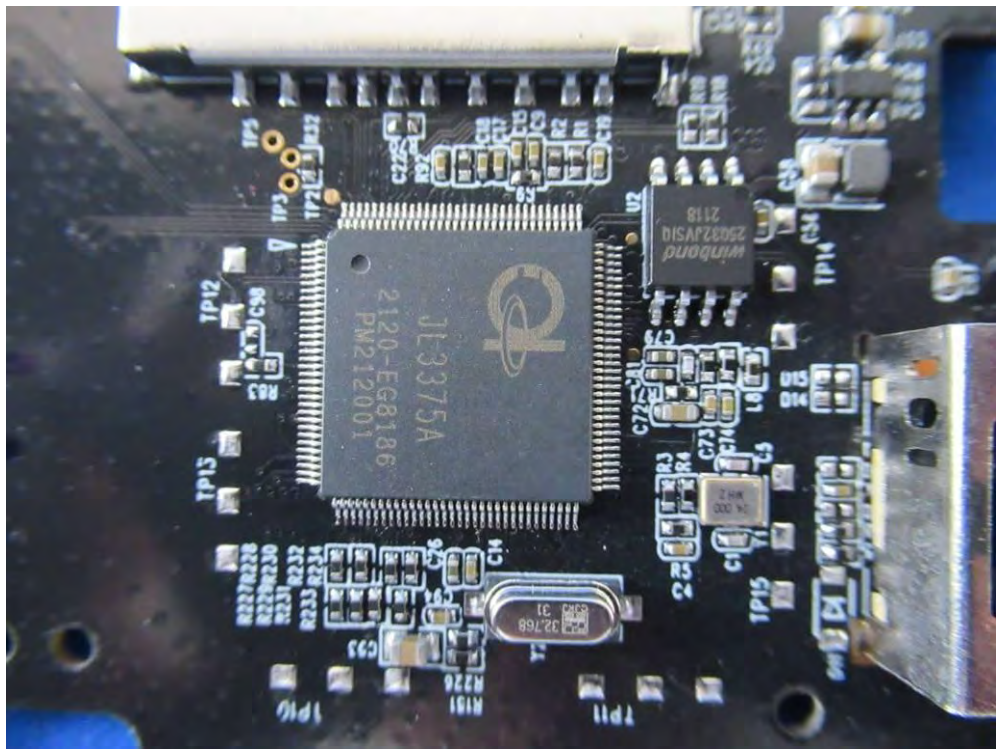
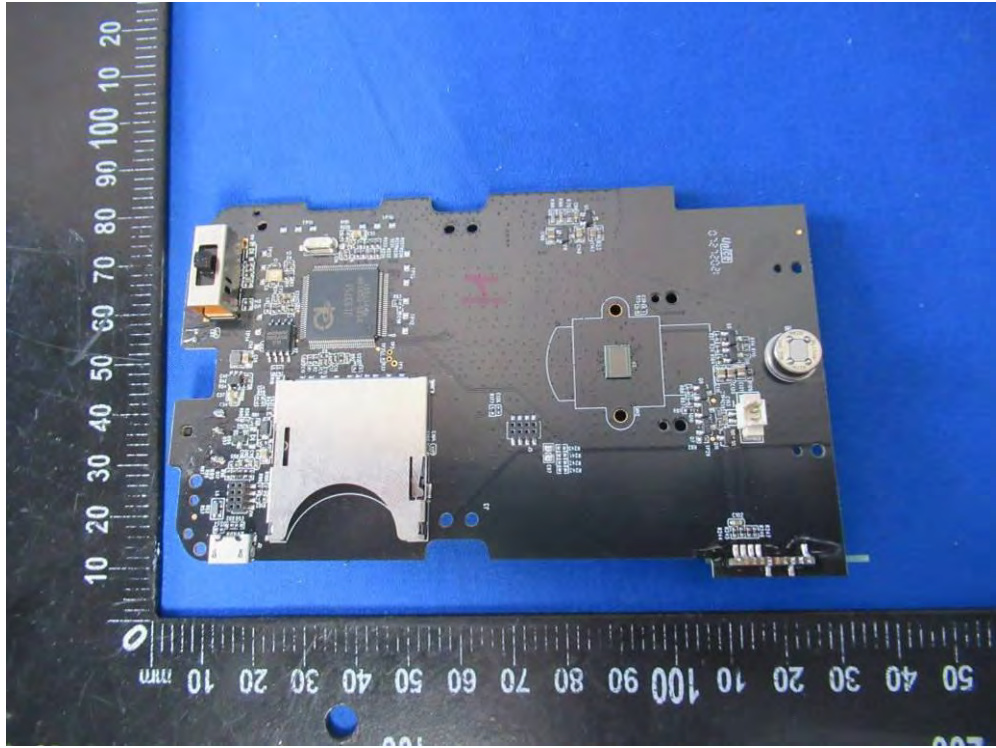




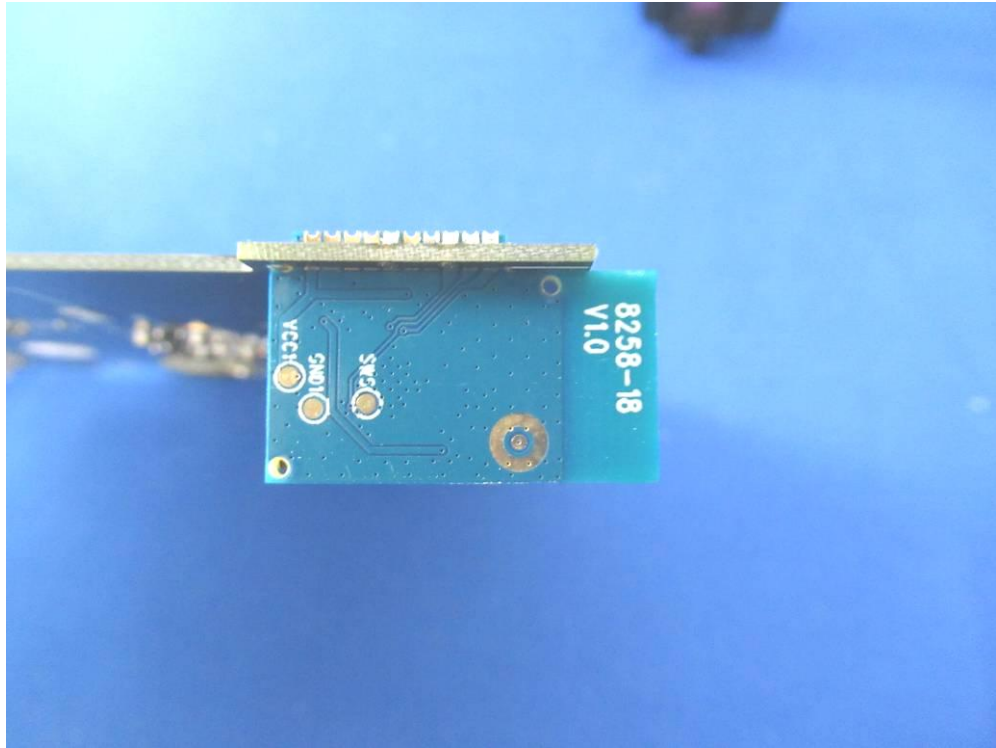


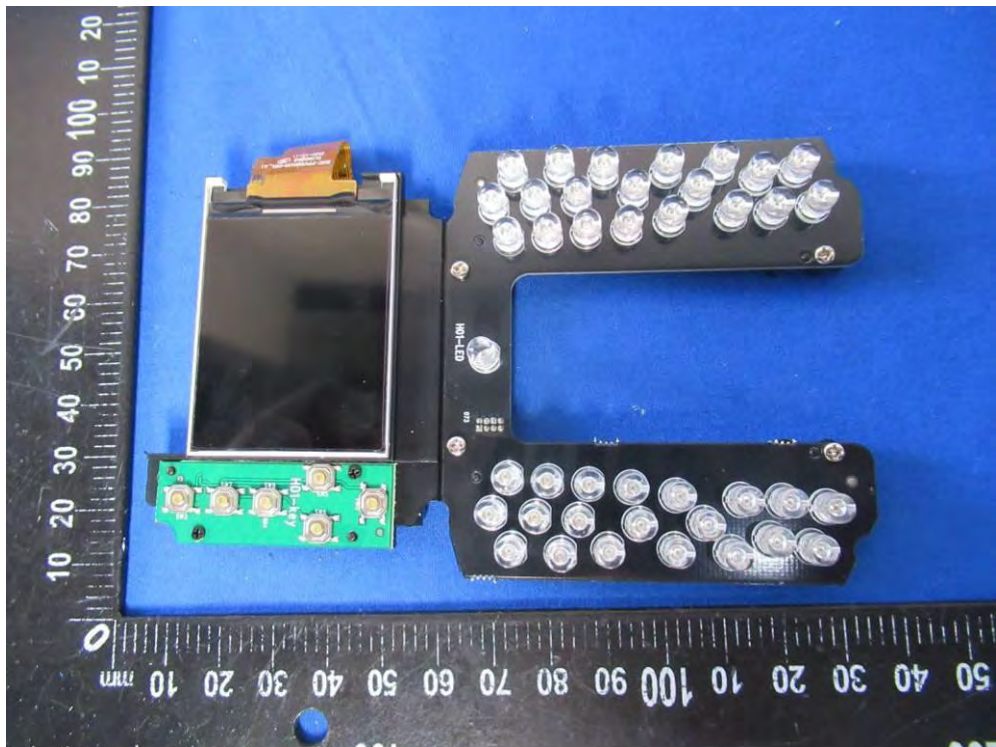
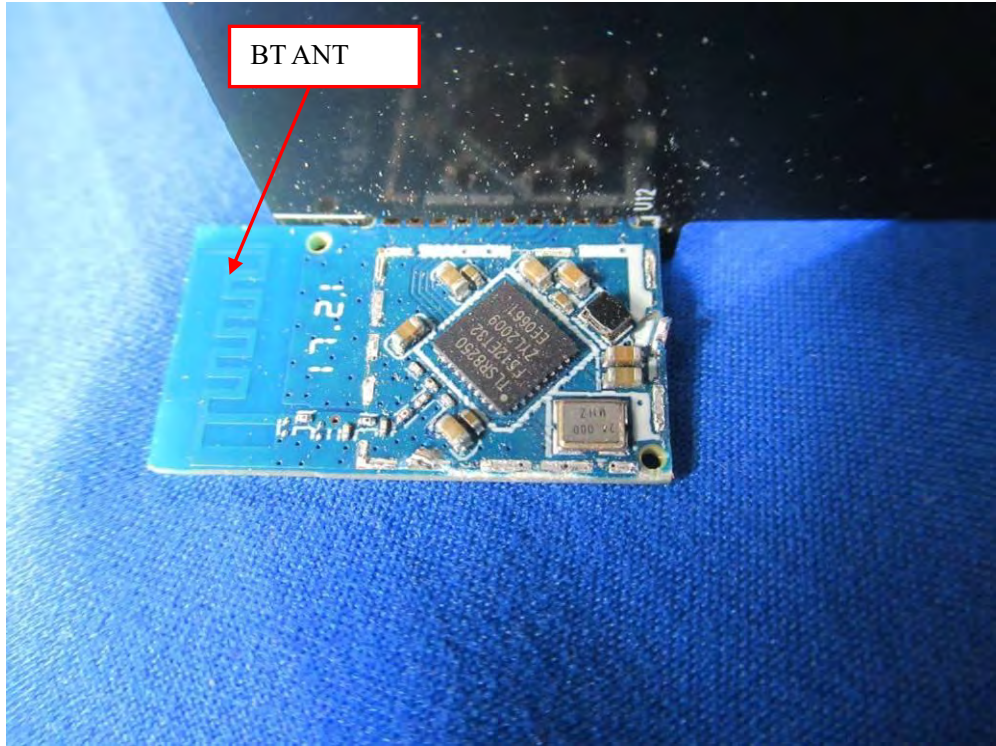




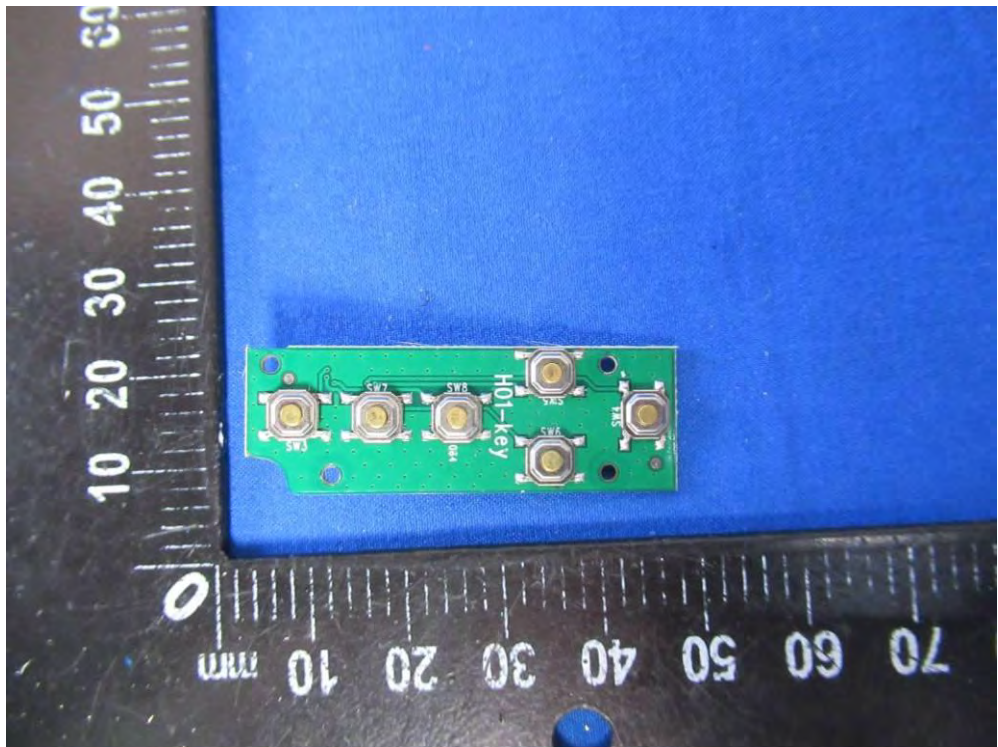
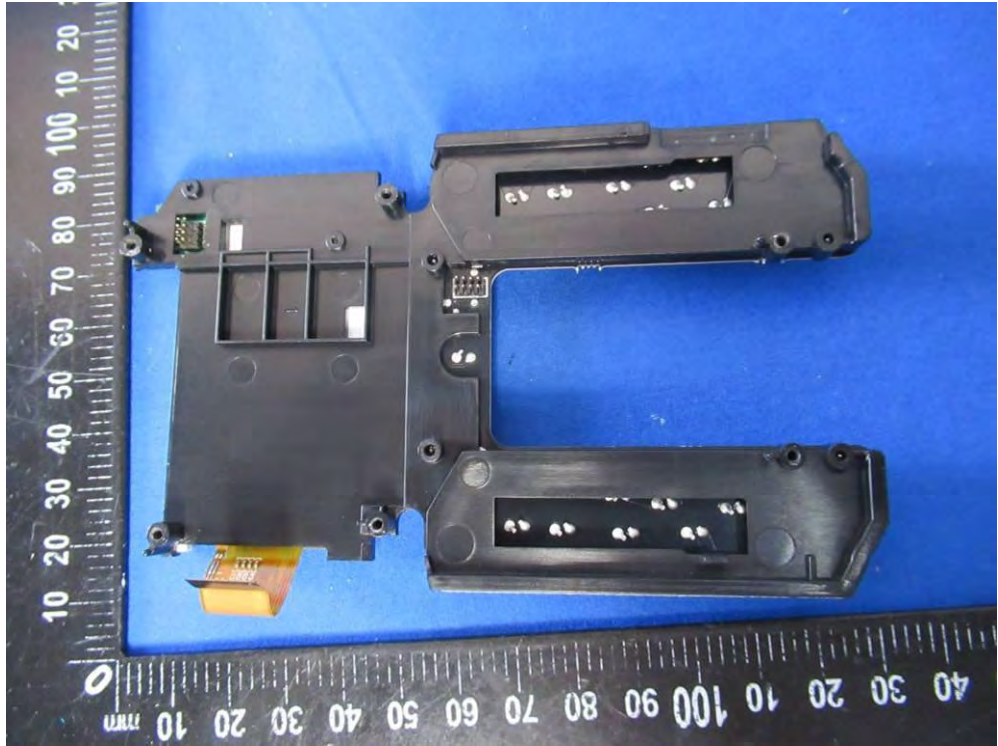




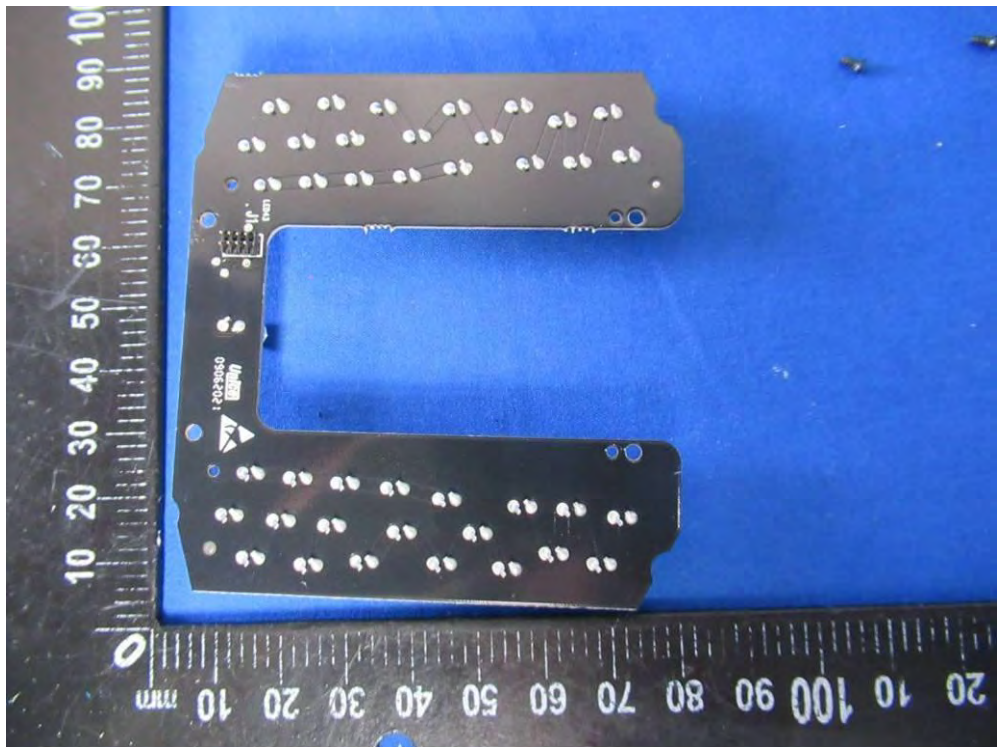
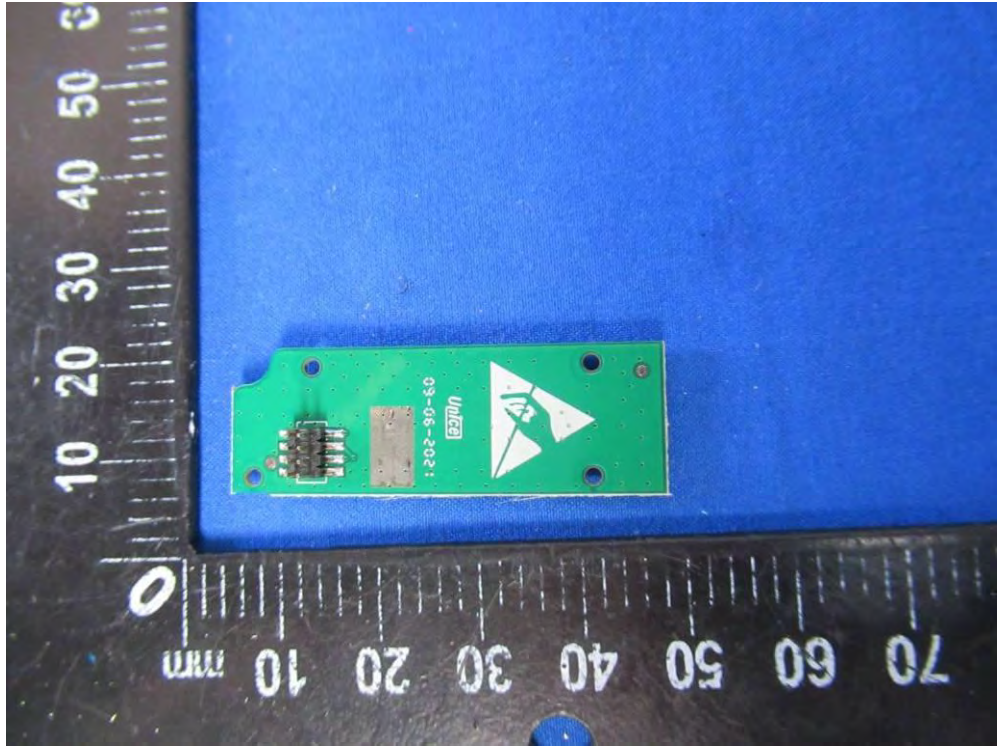


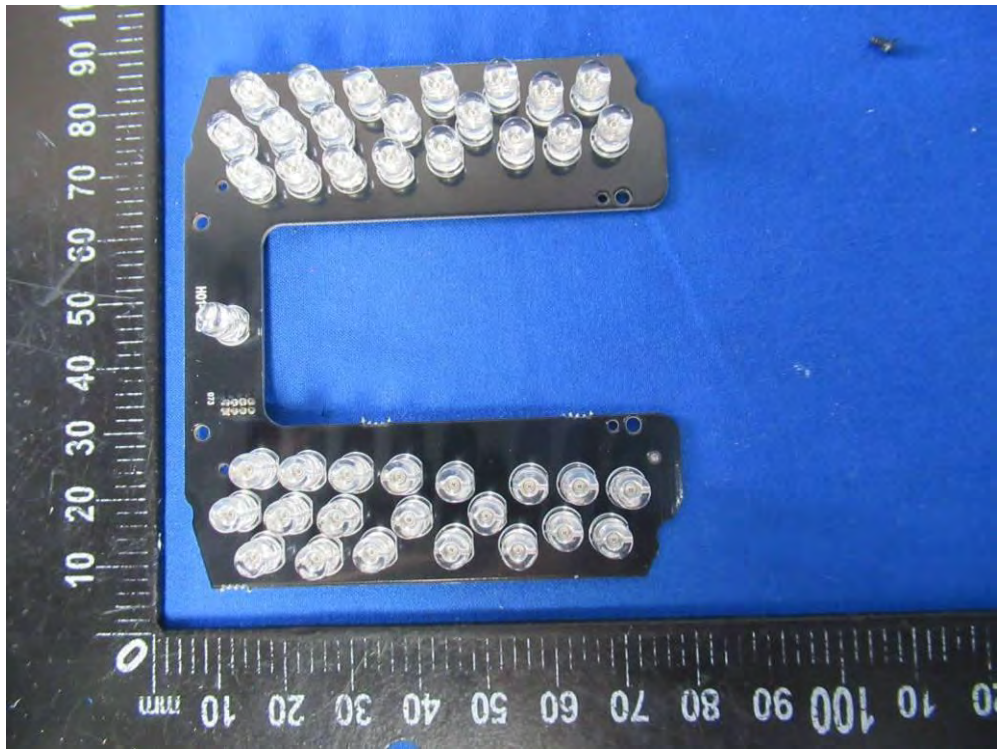








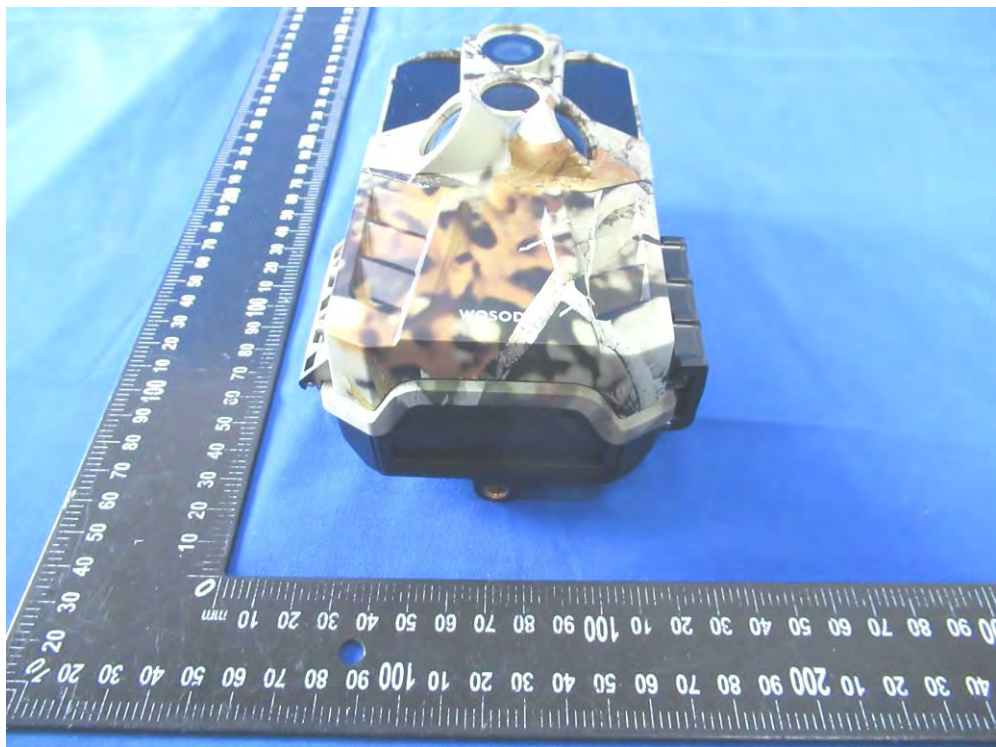
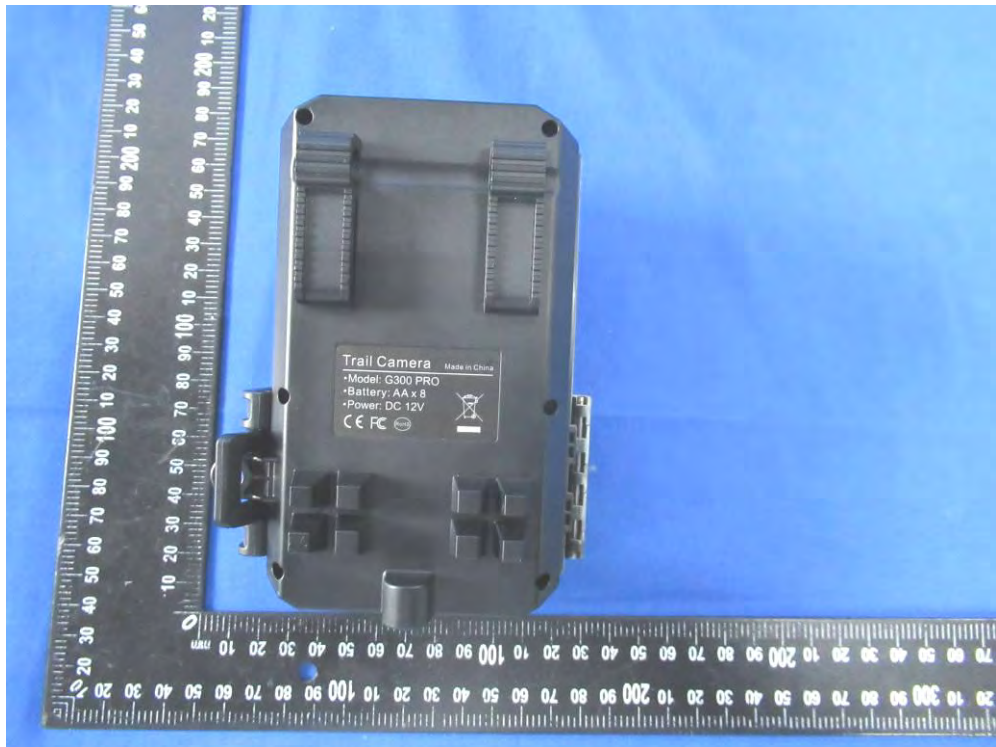


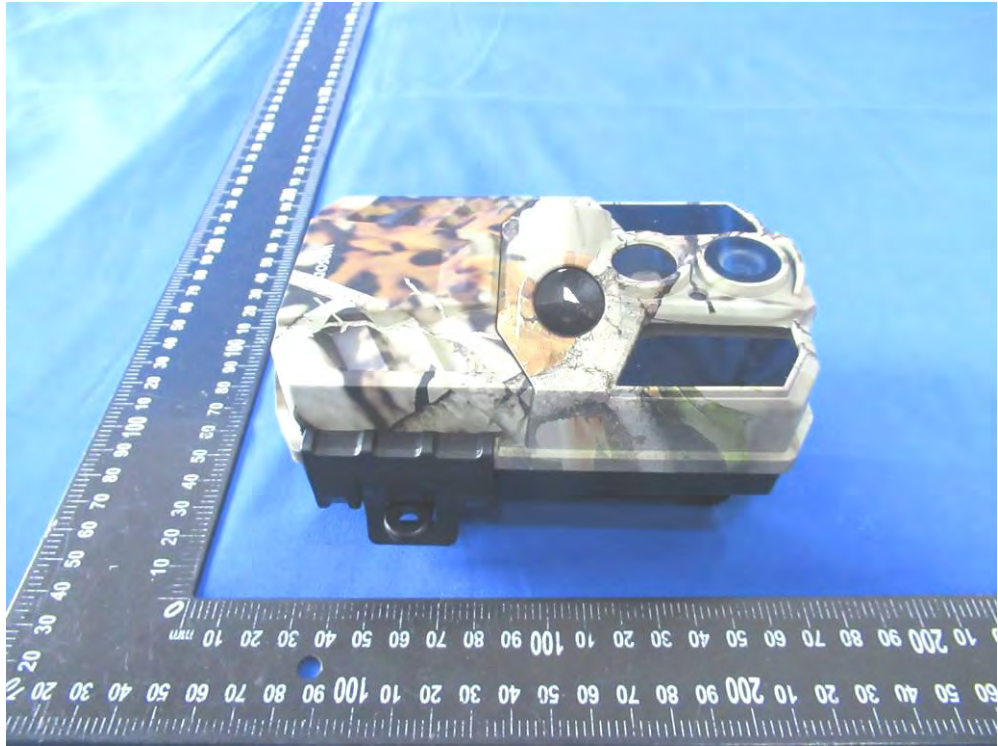


**Model: H-12P**

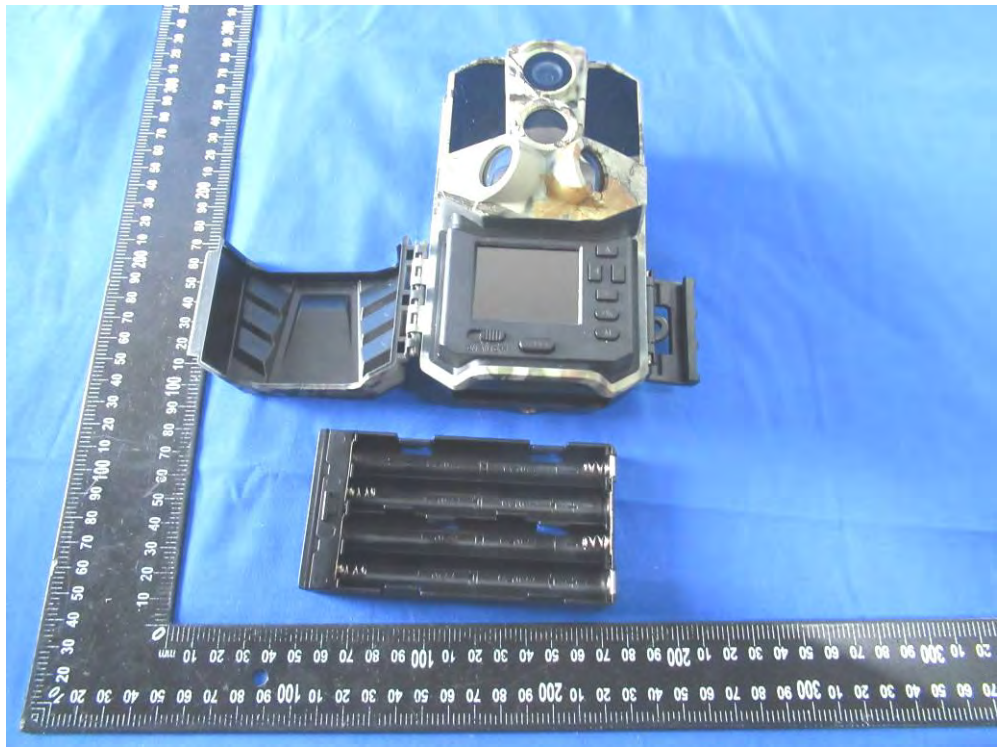






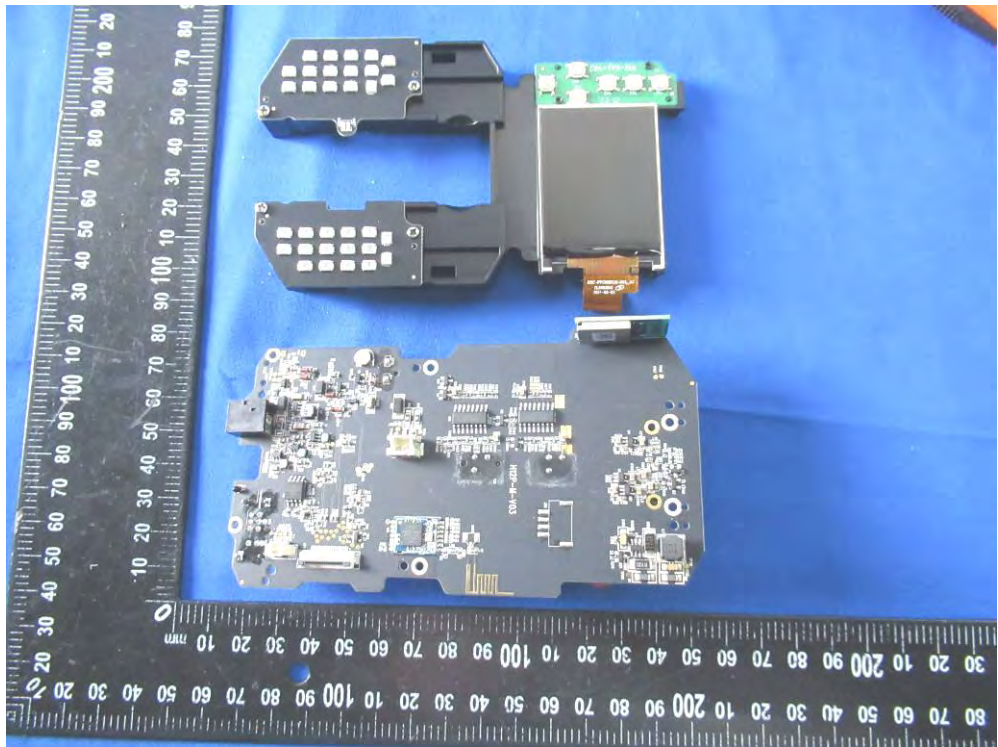


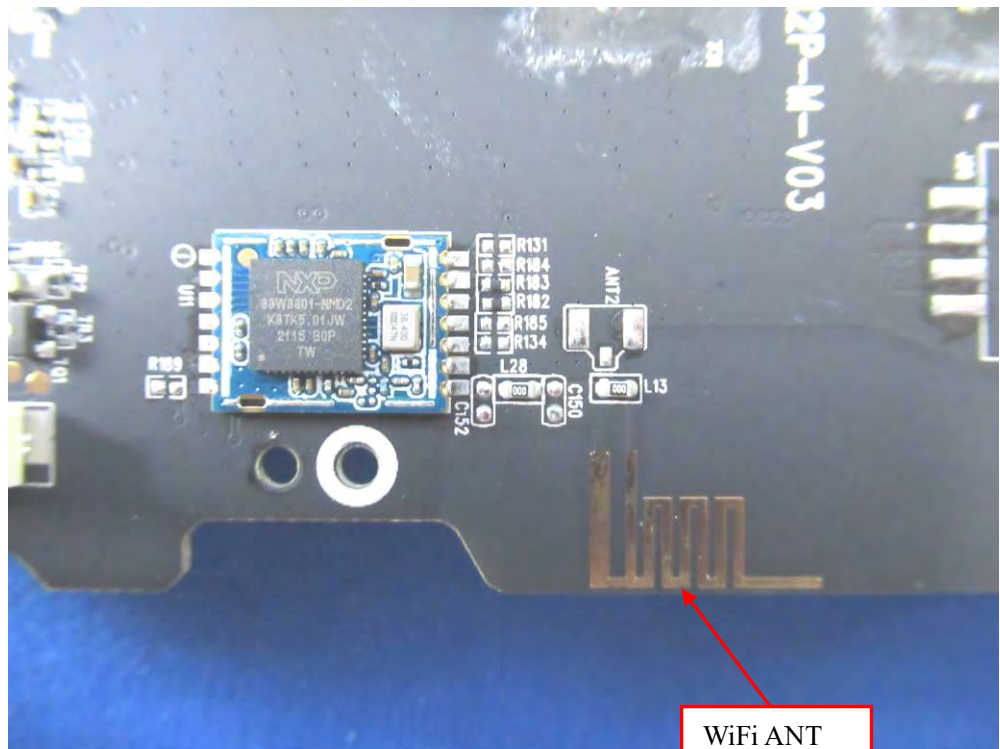
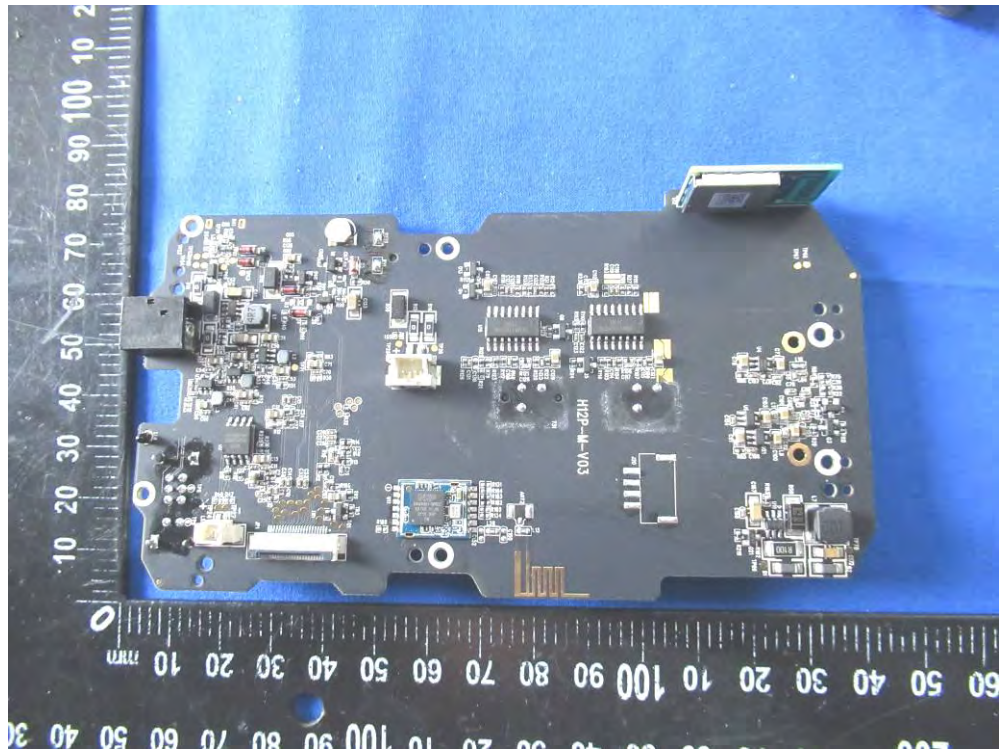






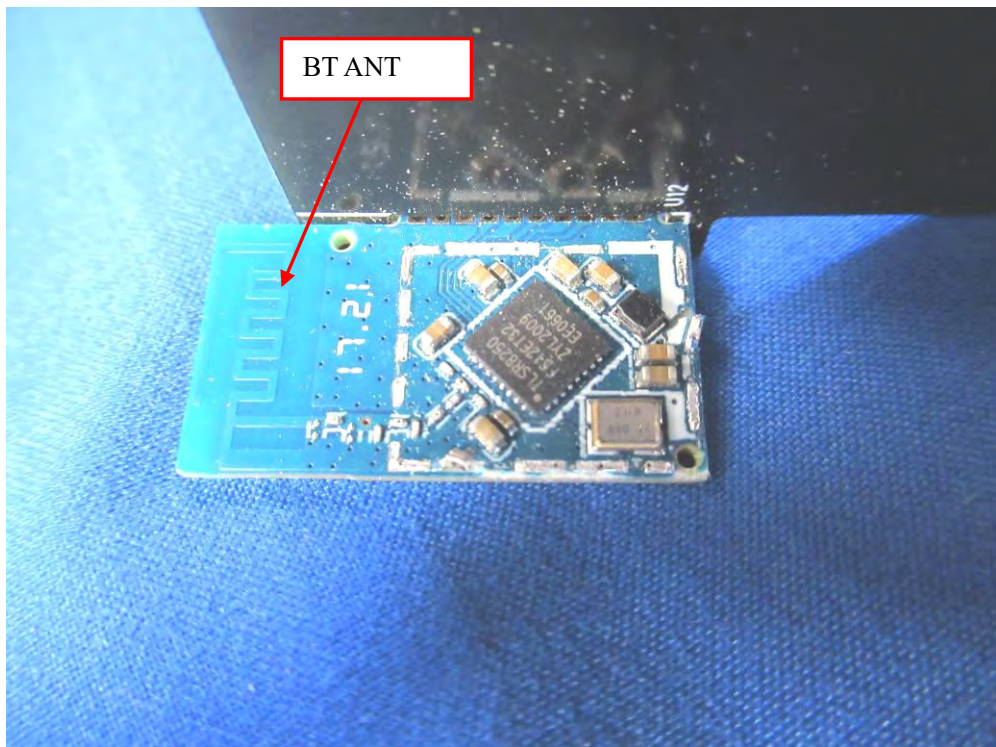
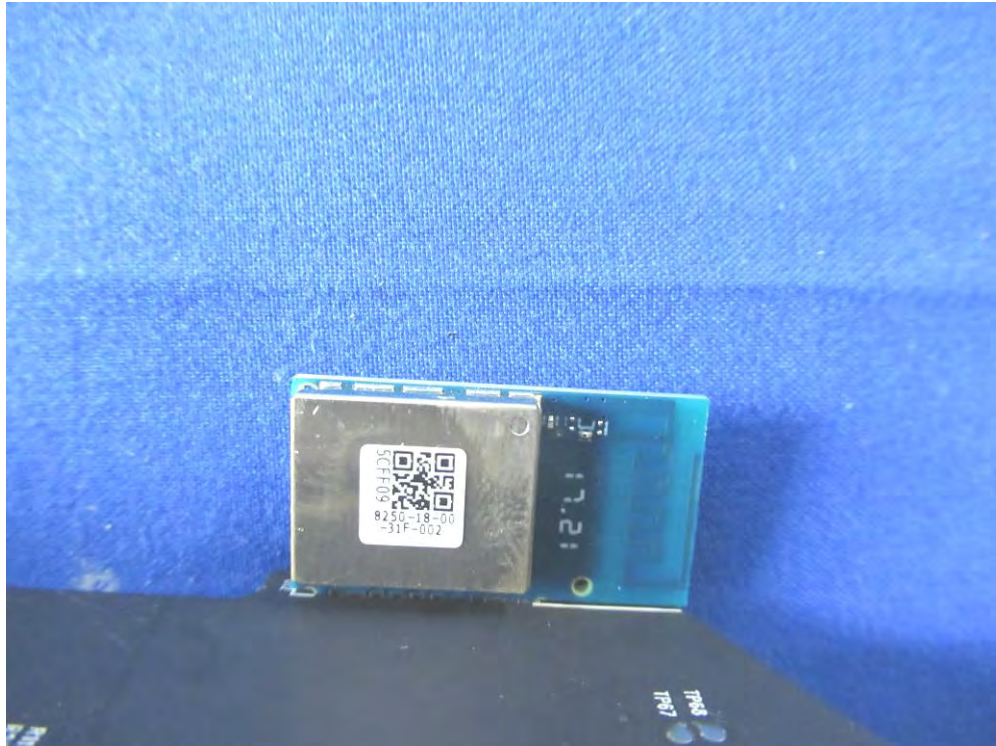


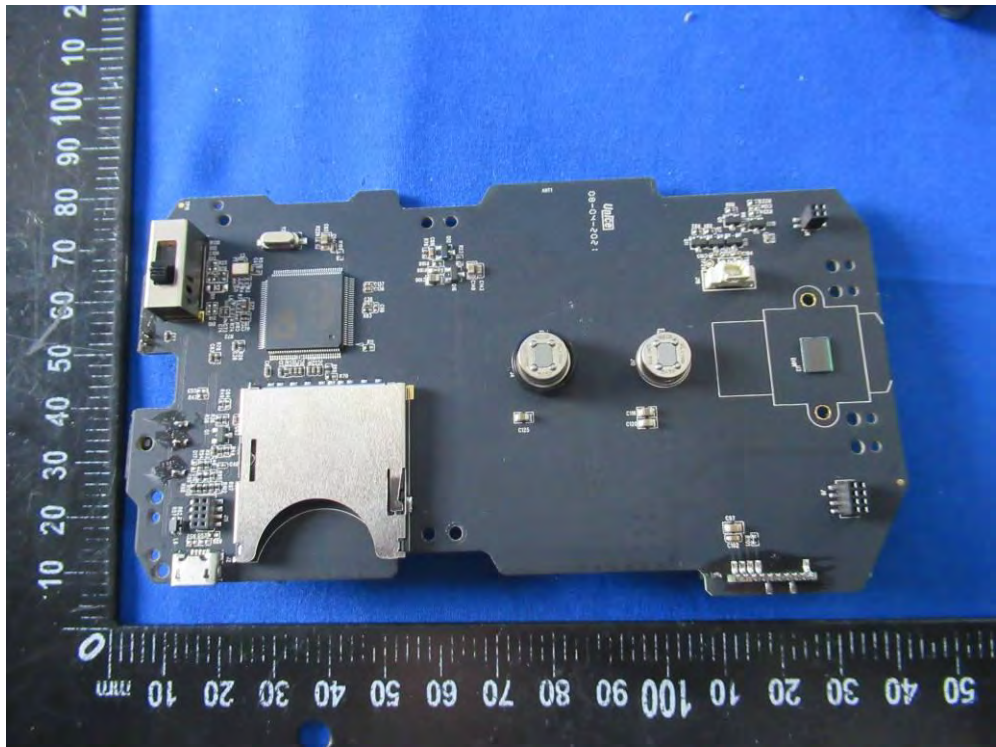
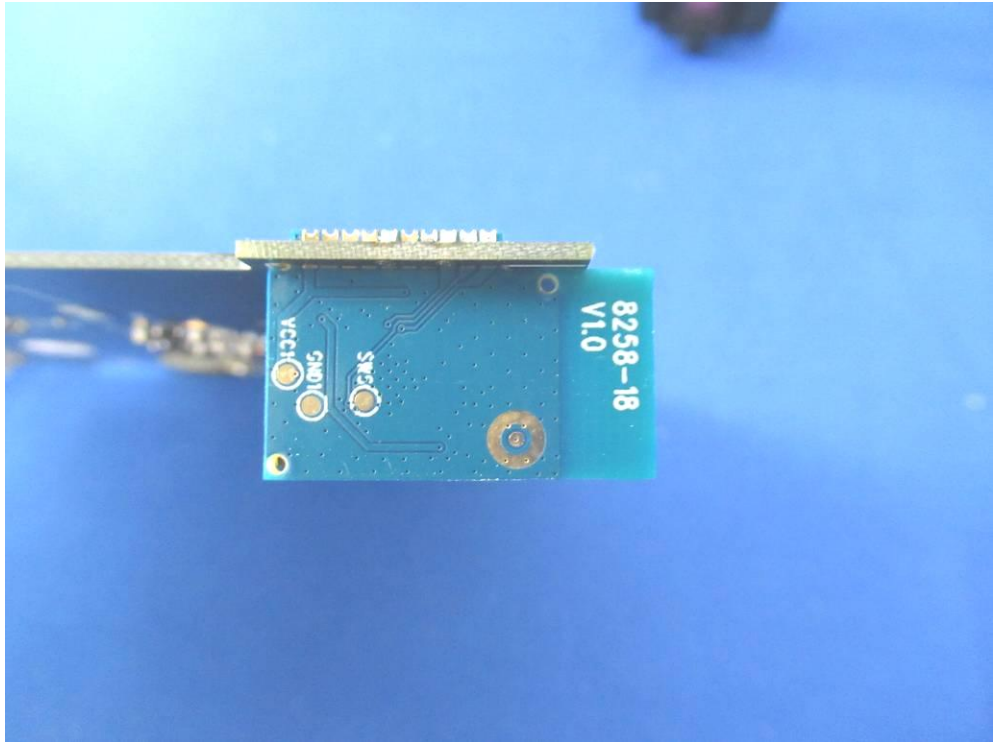




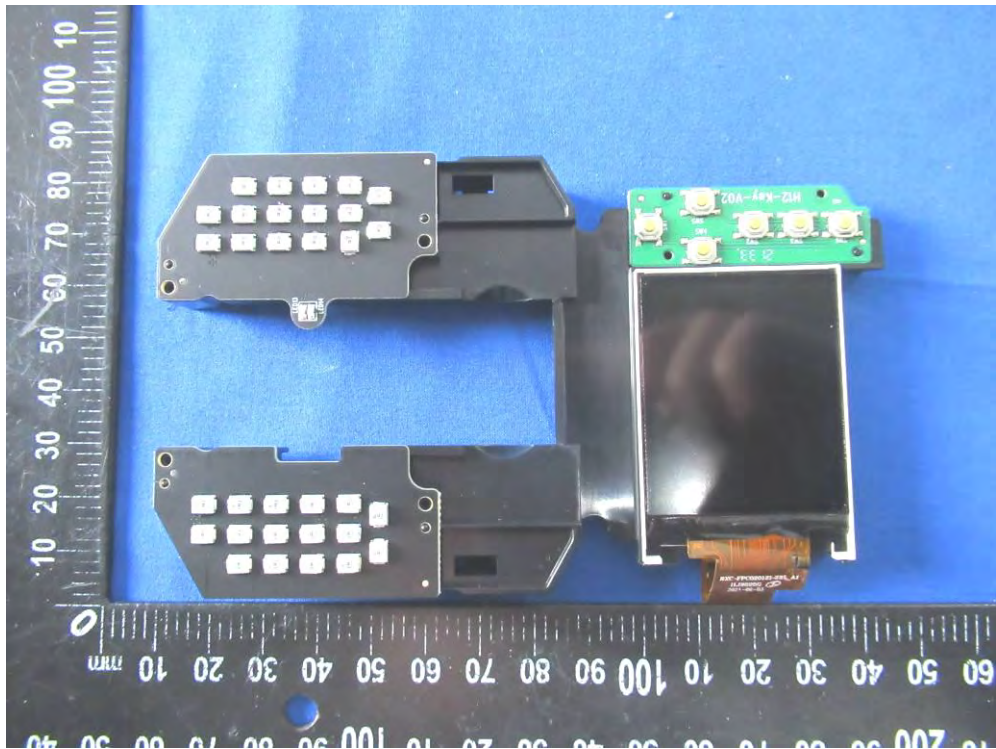
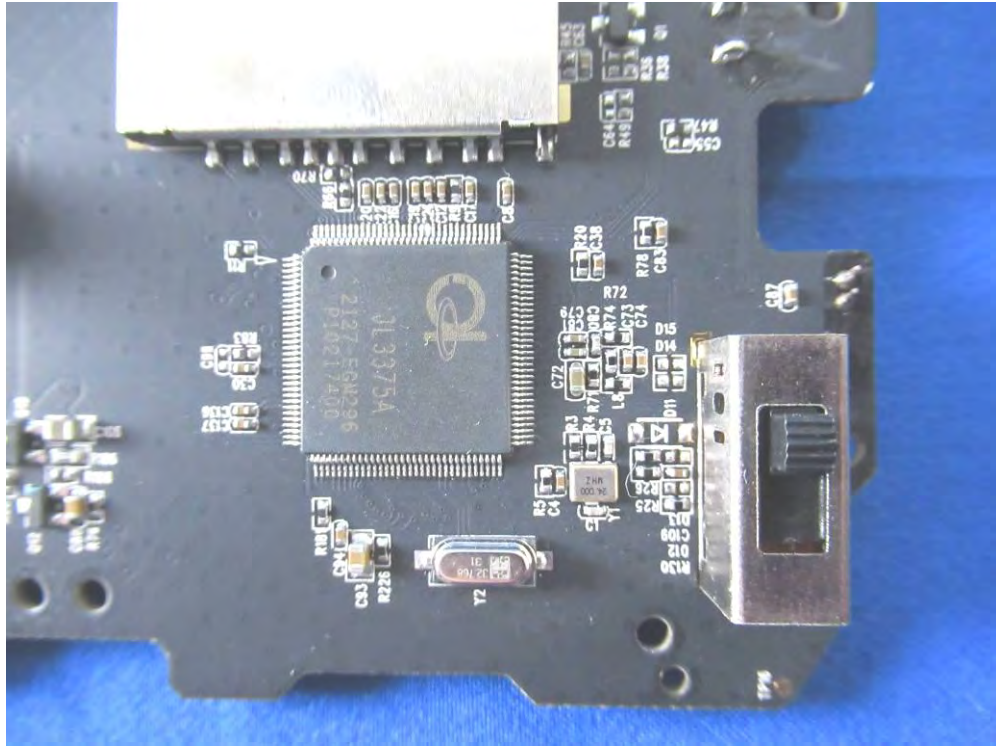
WiFi ANT

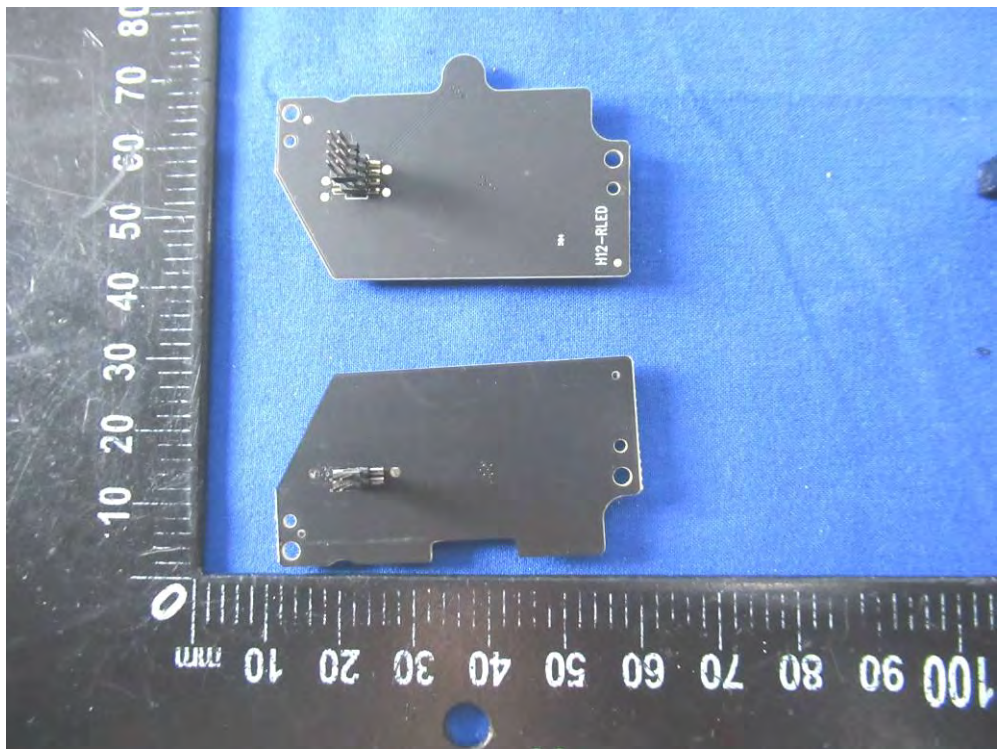
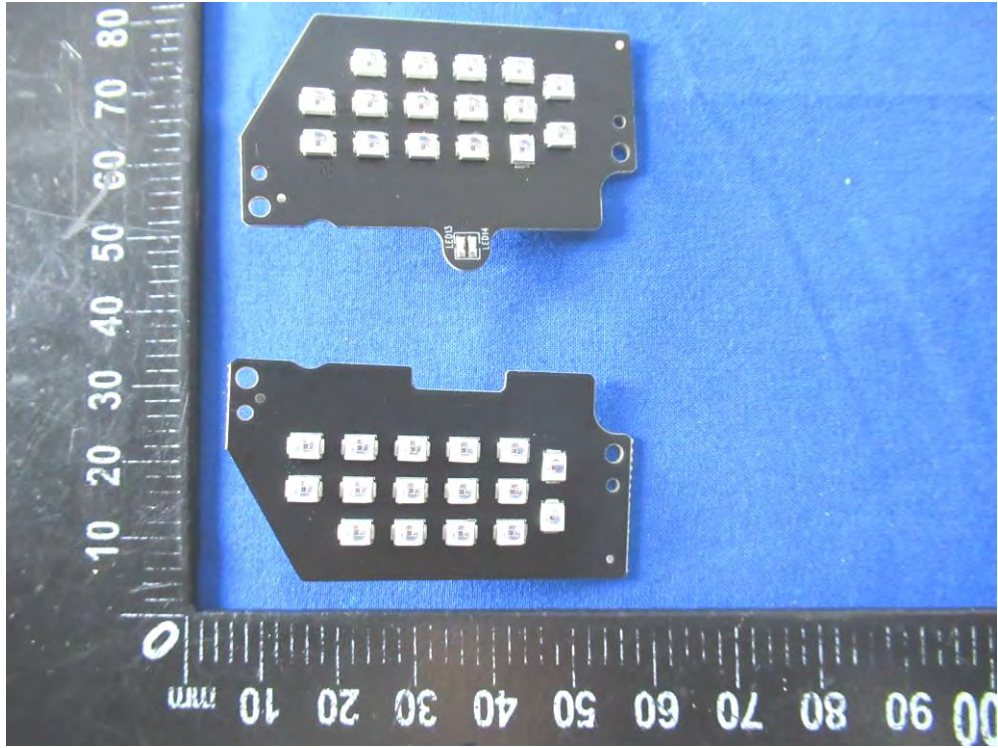




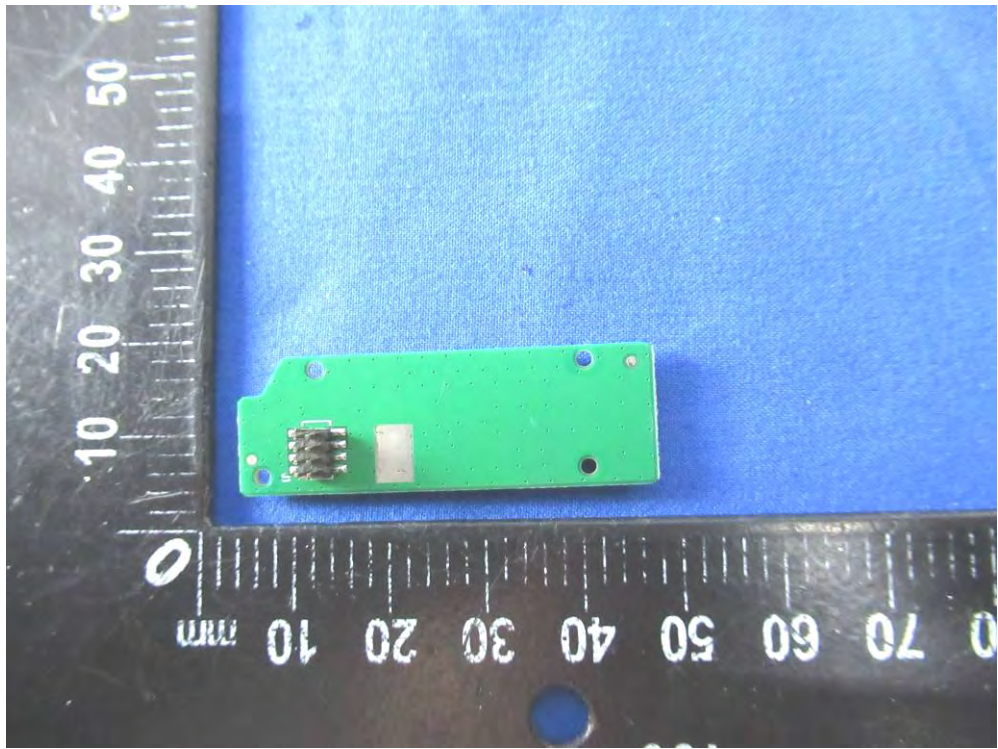
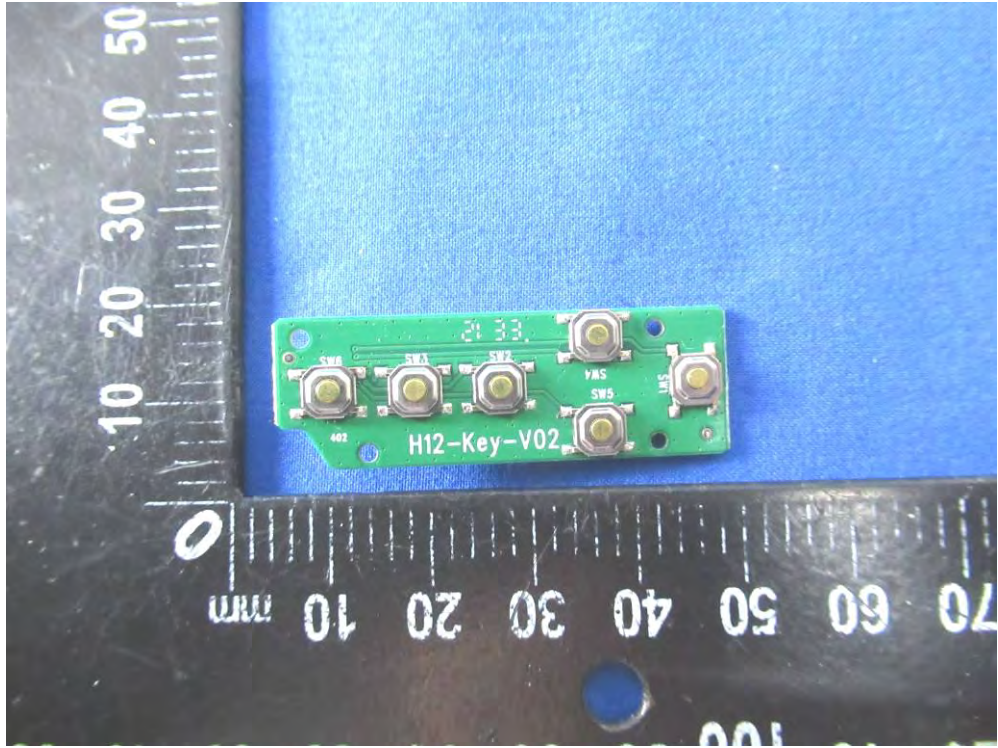












-----THE END OF REPORT-----