



FCC TEST REPORT

**Test report
On Behalf of
GuangZhou Chicken Run Network Technology Co,Ltd.
For
gamesir game controllers
Model No.: GameSir-T4,GameSir-T4W**

FCC ID: 2AF9S-GST4

Prepared for : GuangZhou Chicken Run Network Technology Co,Ltd.
301A-1,NO.68-1,Huacui Street,Jianye Road,Tianhe District,
GuangZhouChina

Prepared By : Shenzhen HUAKE Testing Technology Co., Ltd.
1F, B2 Building, Junfeng Zhongcheng Zhizao Innovation Park, Fuhai Street,
Bao'an District, Shenzhen City, China

Date of Test: Dec. 19, 2018 ~ Jan. 15, 2019

Date of Report: Jan. 15, 2019

Report Number: HK1901090066-E



TEST RESULT CERTIFICATION

Applicant's name: GuangZhou Chicken Run Network Technology Co.,Ltd.
 Address.....: 301A-1,NO.68-1,Huacui Street,Jianye Road,Tianhe District,
 GuangZhouChina
Manufacture's Name.....: Dongguan KingSheng Electronics&Technology Co., Limited
 Address.....: No 9, Xinfu Road, Lincun, Tangxia Town, Dongguan,
 Guangdong.CHINA

Product description

Trade Mark: GAMESIR
 Product name: gamesir game controllers
 Model and/or type reference .: GameSir-T4,GameSir-T4W
Standards: FCC Rules and Regulations Part 15 Subpart C Section 15.249
 ANSI C63.10: 2013

This publication may be reproduced in whole or in part for non-commercial purposes as long as the Shenzhen HUAKE Testing Technology Co., Ltd. is acknowledged as copyright owner and source of the material. Shenzhen HUAKE Testing Technology Co., Ltd. takes no responsibility for and will not assume liability for damages resulting from the reader's interpretation of the reproduced material due to its placement and context.

Date of Test..... :
 Date (s) of performance of tests: Dec. 19, 2018 ~ Jan. 15, 2019
 Date of Issue: Jan. 15, 2019
 Test Result: **Pass**

Testing Engineer : Gary Qian
 (Gary Qian)
 Technical Manager : Eden Hu
 (Eden Hu)
 Authorized Signatory : Jason Zhou
 (Jason Zhou)



Table of Contents	Page
1 . TEST SUMMARY	4
2 . GENERAL INFORMATION	5
2.1 GENERAL DESCRIPTION OF EUT	5
2.2 Carrier Frequency of Channels	6
2.3 Operation of EUT during testing	6
2.4 DESCRIPTION OF TEST SETUP	6
2.5 MEASUREMENT INSTRUMENTS LIST	7
3 . CONDUCTED EMISSIONS TEST	8
3.1 Conducted Power Line Emission Limit	8
3.2 Test Setup	8
3.3 Test Procedure	8
3.4 Test Result	8
4 RADIATED EMISSION TEST	11
4.1 Radiation Limit	11
4.2 Test Setup	11
4.3 Test Procedure	12
4.4 Test Result	12
5 BAND EDGE	18
5.1 Limits	18
5.2 Test Procedure	18
5.3 Test Result	19
6 OCCUPIED BANDWIDTH MEASUREMENT	23
6.1 Test Setup	23
6.2 Test Procedure	23
6.3 Measurement Equipment Used	23
6.4 Test Result	23
7 ANTENNA REQUIREMENT	25
8 PHOTOGRAPH OF TEST	26
Conducted Emission	26
Radiated Emission	27



1. TEST SUMMARY

1.1 TEST PROCEDURES AND RESULTS

DESCRIPTION OF TEST	RESULT
CONDUCTED EMISSIONS TEST	COMPLIANT
RADIATED EMISSION TEST	COMPLIANT
BAND EDGE	COMPLIANT
OCCUPIED BANDWIDTH MEASUREMENT	COMPLIANT
ANTENNA REQUIREMENT	COMPLIANT

1.2 TEST FACILITY

Test Firm : Shenzhen HUAKE Testing Technology Co., Ltd.

Address 1F, B2 Building, Junfeng Zhongcheng Zhizao Innovation Park, Fuhai Street, Bao'an District, Shenzhen City, China

1.3 MEASUREMENT UNCERTAINTY

Measurement Uncertainty	
Conducted Emission Expanded Uncertainty	= 2.23dB, k=2
Radiated emission expanded uncertainty(9kHz-30MHz)	= 3.08dB, k=2
Radiated emission expanded uncertainty(30MHz-1000MHz)	= 4.42dB, k=2
Radiated emission expanded uncertainty(Above 1GHz)	= 4.06dB, k=2



2. GENERAL INFORMATION

2.1 GENERAL DESCRIPTION OF EUT

Equipment	gamesir game controllers
Model Name	GameSir-T4
Serial No.	GameSir-T4W
Trade Mark	GAMESIR
Model Difference	All model's the function, software and electric circuit are the same, only with a product model named different. Test sample model: GameSir-T4.
FCC ID	2AF9S-GST4
Antenna Type	PCB Antenna
Antenna Gain	0dBi
BT Operation frequency	2402-2480MHz
Number of Channels	40CH
Modulation Type	GFSK
PowerSource	DC3.7V From Battery or DC 5V from adapter with AC 120V/60Hz
Power Rating	DC3.7V From Battery or DC 5V from adapter with AC 120V/60Hz



2.2 Carrier Frequency of Channels

Channel List							
Channel	Frequency (MHz)	Channel	Frequency (MHz)	Channel	Frequency (MHz)	Channel	Frequency (MHz)
01	2402	11	2422	21	2442	31	2462
02	2404	12	2424	22	2444	32	2464
03	2406	13	2426	23	2446	33	2466
04	2408	14	2428	24	2448	34	2468
05	2410	15	2430	25	2450	35	2470
06	2412	16	2432	26	2452	36	2472
07	2414	17	2434	27	2454	37	2474
08	2416	18	2436	28	2456	38	2476
09	2418	19	2438	29	2458	39	2478
10	2420	20	2440	30	2460	40	2480

2.3 Operation of EUT during testing

Operating Mode

The mode is used: **Transmitting mode**

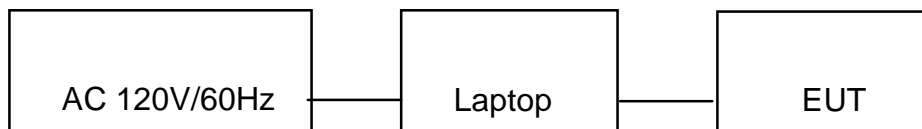
Low Channel: 2402MHz

Middle Channel: 2440MHz

High Channel: 2480MHz

2.4DESCRIPTION OF TEST SETUP

Operation of EUT during Conducted testing:



Operation of EUT during Radiation and Above 1GHz Radiation testing:



● Adapter information

Model: HW-051000CHQ

Input: 100-240V~, 50/60Hz, 0.5A

Output: 5VDC, 1A

● Laptop information

Model:HP109

Input:DC 24V, 2A



2.5 MEASUREMENT INSTRUMENTS LIST

Item	Equipment	Manufacturer	Model No.	Serial No.	Last Cal.	Cal. Interval
1.	L.I.S.N. Artificial Mains Network	R&S	ENV216	HKE-002	Dec. 28, 2018	1 Year
2.	Receiver	R&S	ESCI 7	HKE-010	Dec. 28, 2018	1 Year
3.	RF automatic control unit	Tonscend	JS0806-2	HKE-060	Dec. 28, 2018	1 Year
4.	Spectrum analyzer	R&S	FSP40	HKE-025	Dec. 28, 2018	1 Year
5.	Spectrum analyzer	Agilent	N9020A	HKE-048	Dec. 28, 2018	1 Year
6.	Preamplifier	Schwarzbeck	BBV 9743	HKE-006	Dec. 28, 2018	1 Year
7.	EMI Test Receiver	Rohde & Schwarz	ESCI 7	HKE-010	Dec. 28, 2018	1 Year
8.	Bilog Broadband Antenna	Schwarzbeck	VULB9163	HKE-012	Dec. 28, 2018	1 Year
9.	Loop Antenna	Schwarzbeck	FMZB 1519 B	HKE-014	Dec. 28, 2018	1 Year
10.	Horn Antenna	Schwarzbeck	9120D	HKE-013	Dec. 28, 2018	1 Year
11.	Pre-amplifier	EMCI	EMC051845 SE	HKE-015	Dec. 28, 2018	1 Year
12.	Pre-amplifier	Agilent	83051A	HKE-016	Dec. 28, 2018	1 Year
13.	EMI Test Software EZ-EMC	Tonscend	JS1120-B Version	HKE-083	Dec. 28, 2018	N/A
14.	Power Sensor	Agilent	E9300A	HKE-086	Dec. 28, 2018	1 Year
15.	Spectrum analyzer	Agilent	N9020A	HKE-048	Dec. 28, 2018	1 Year
16.	Signal generator	Agilent	N5182A	HKE-029	Dec. 28, 2018	1 Year
17.	Signal Generator	Agilent	83630A	HKE-028	Dec. 28, 2018	1 Year
18.	Shielded room	Shiel Hong	4*3*3	HKE-039	Dec. 28, 2018	3 Year



3. CONDUCTED EMISSIONS TEST

3.1 Conducted Power Line Emission Limit

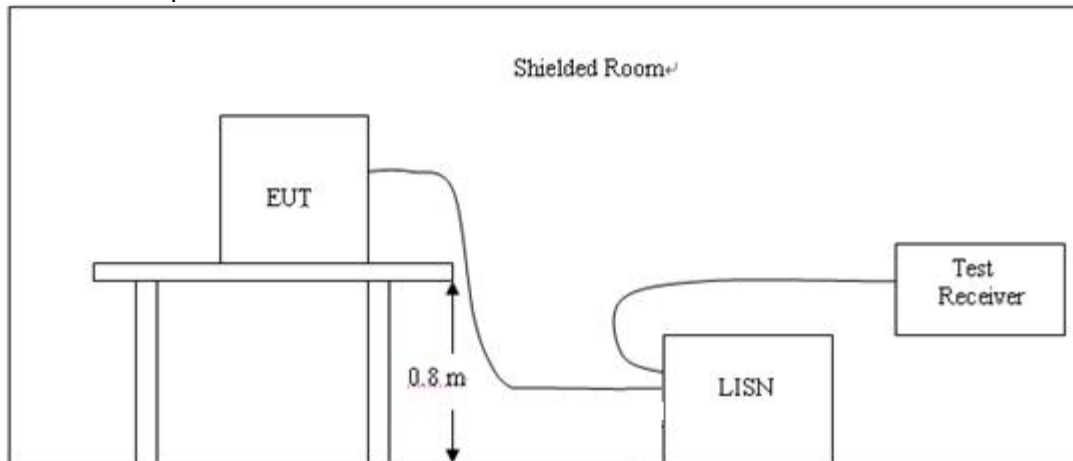
For unintentional device, according to § 15.107(a) Line Conducted Emission Limits is as following

Frequency (MHz)	Maximum RF Line Voltage (dB μ V)			
	CLASS A		CLASS B	
	Q.P.	Ave.	Q.P.	Ave.
0.15 - 0.50	79	66	66-56*	56-46*
0.50 - 5.00	73	60	56	46
5.00 - 30.0	73	60	60	50

* Decreasing linearly with the logarithm of the frequency

For intentional device, according to §15.207(a) Line Conducted Emission Limit is same as above table.

3.2 Test Setup



3.3 Test Procedure

- 1, The equipment was set up as per the test configuration to simulate typical actual usage per the user's manual. The EUT is a tabletop system, a wooden table with a height of 0.8 meters is used and is placed on the ground plane as per ANSI C63.10.
- 2, Support equipment, if needed, was placed as per ANSI C63.10.
- 3, All I/O cables were positioned to simulate typical actual usage as per ANSI C63.10.
- 4, If a EUT received DC power from the USB Port of Notebook PC, the PC's adapter received AC120V/60Hz power through a Line Impedance Stabilization Network (LISN) which supplied power source and was grounded to the ground plane.
- 5, All support equipments received AC power from a second LISN, if any.
- 6, The EUT test program was started. Emissions were measured on each current carrying line of the EUT using a spectrum Analyzer / Receiver connected to the LISN powering the EUT. The LISN has two monitoring points: Line 1 (Hot Side) and Line 2 (Neutral Side). Two scans were taken: one with Line 1 connected to Analyzer / Receiver and Line 2 connected to a 50 ohm load; the second scan had Line 1 connected to a 50 ohm load and Line 2 connected to the Analyzer / Receiver.
- 7, Analyzer / Receiver scanned from 150 KHz to 30MHz for emissions in each of the test modes.

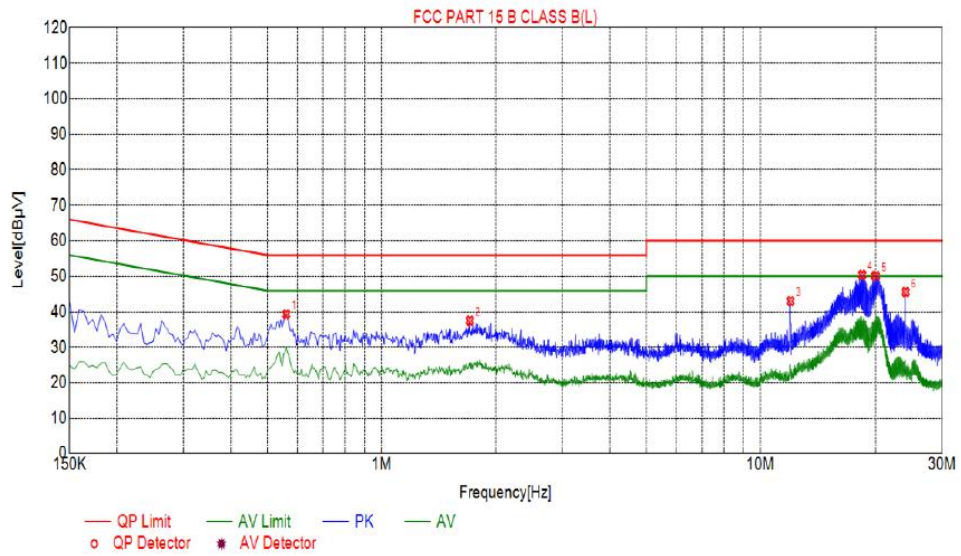
3.4 Test Result

Pass



EUT :	gamesir game controllers	Model Name. :	GameSir-T4
Temperature :	26 °C	Relative Humidity :	54%
Pressure :	1010hPa	Test Date :	2018-12-20
Test Mode :	Running	Phase :	L
Test Voltage :	DC 3.7V by PC AC 120V/60Hz		

Test Graph



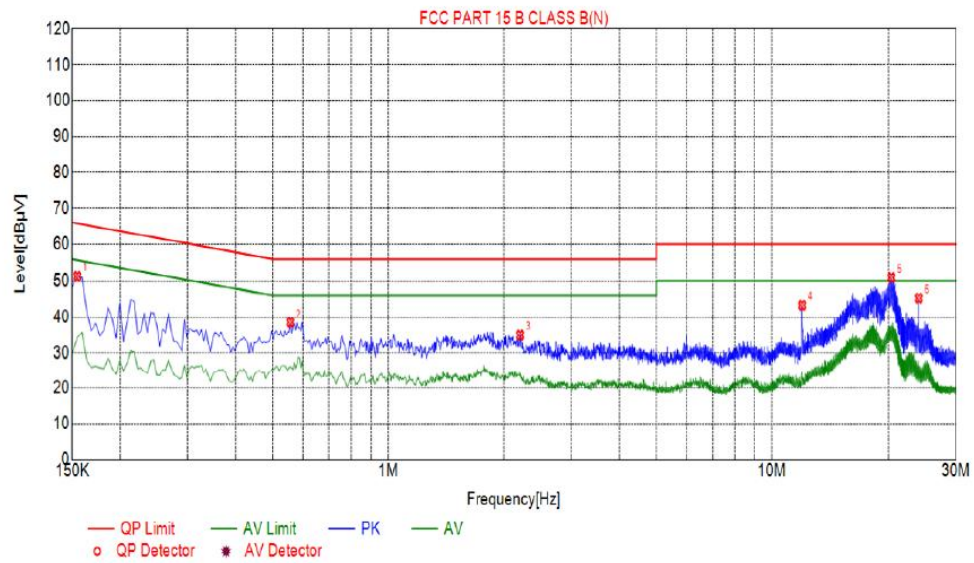
Suspected List						
NO.	Freq. [MHz]	Level [dBµV]	Factor [dB]	Limit [dBµV]	Margin [dB]	Detector
1	0.5595	39.35	10.06	56.00	16.65	PK
2	1.7070	37.55	10.13	56.00	18.45	PK
3	12.0075	43.08	9.99	60.00	16.92	PK
4	18.5505	50.46	10.05	60.00	9.54	PK
5	20.0535	50.14	10.11	60.00	9.86	PK
6	24.0045	45.63	10.22	60.00	14.37	PK

Remark: Transd = Cable lose + Antenna factor - Pre-amplifier; Margin = Limit – Level



EUT :	gamesir game controllers	Model Name. :	GameSir-T4
Temperature :	26 °C	Relative Humidity :	54%
Pressure :	1010hPa	Test Date :	2018-12-20
Test Mode :	Running	Phase :	N
Test Voltage :	DC 3.7V by PC AC 120V/60Hz		

Test Graph



Suspected List						
NO.	Freq. [MHz]	Level [dBµV]	Factor [dB]	Limit [dBµV]	Margin [dB]	Detector
1	0.1545	51.26	10.03	65.75	14.49	PK
2	0.5550	38.44	10.06	56.00	17.56	PK
3	2.2065	34.87	10.17	56.00	21.13	PK
4	11.9985	43.30	9.99	60.00	16.70	PK
5	20.3370	50.92	10.12	60.00	9.08	PK
6	23.9820	45.25	10.22	60.00	14.75	PK

Remark: Transd = Cable lose + Antenna factor - Pre-amplifier; Margin = Limit – Level

4 RADIATED EMISSION TEST

4.1 Radiation Limit

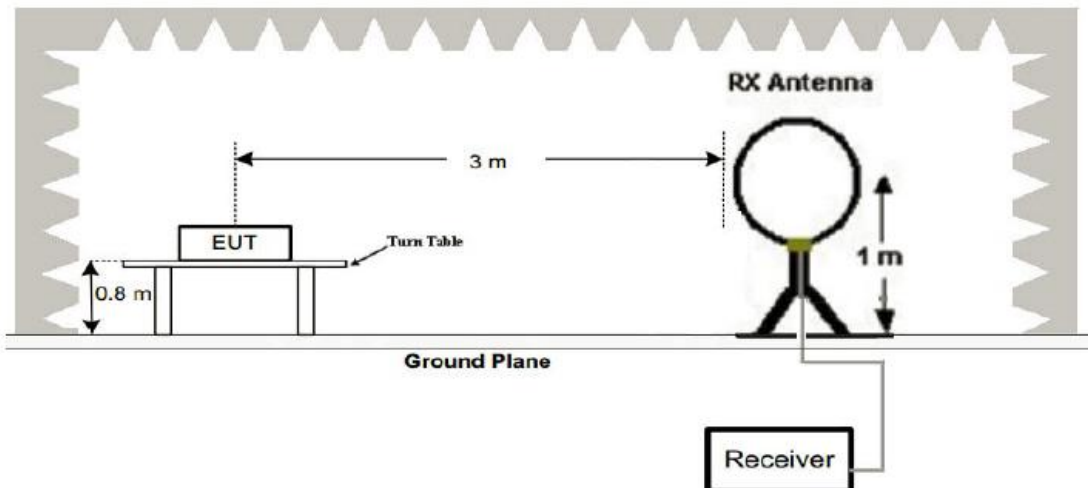
For unintentional device, according to § 15.109(a), except for Class A digital devices, the field strength of radiated emissions from unintentional radiators at a distance of 3 meters shall not exceed the following values:

Frequency (MHz)	Distance (Meters)	Radiated (dB μ V/m)	Radiated (μ V/m)
30-88	3	40	100
88-216	3	43.5	150
216-960	3	46	200
Above 960	3	54	500

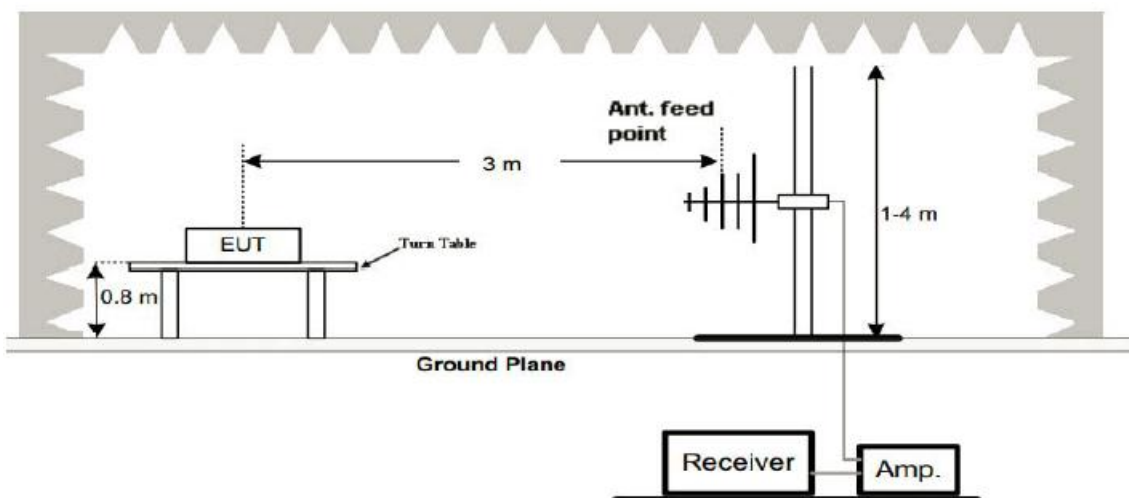
For intentional device, according to § 15.209(a), the general requirement of field strength of radiated emissions from intentional radiators at a distance of 3 meters shall not exceed the above table.

4.2 Test Setup

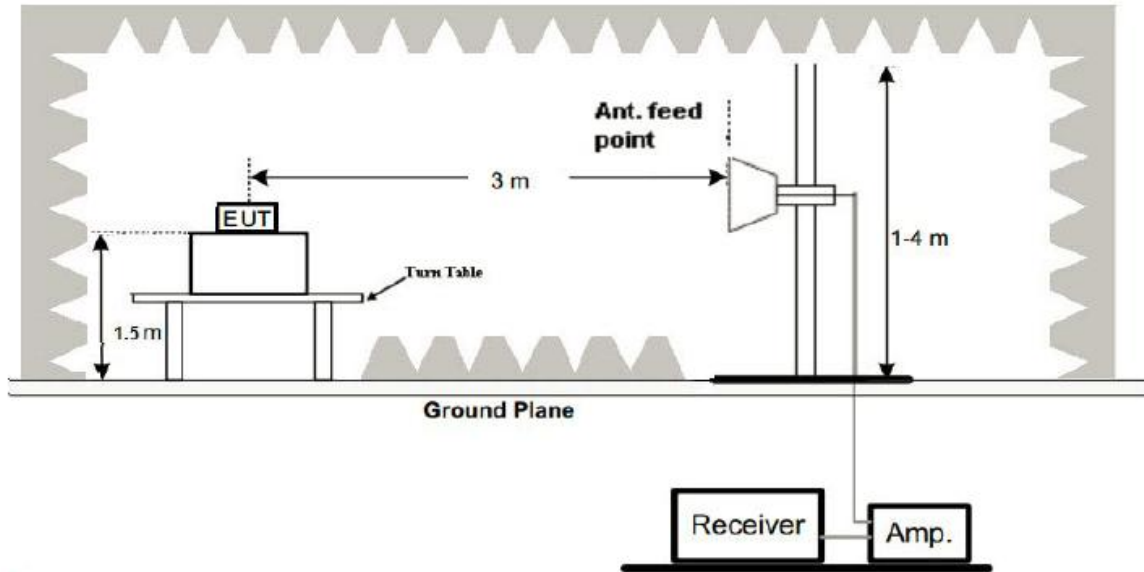
(1) Radiated Emission Test-Up Frequency Below 30MHz



(2) Radiated Emission Test-Up Frequency 30MHz~1GHz



(3) Radiated Emission Test-Up Frequency Above 1GHz



4.3 Test Procedure

1. Below 1GHz measurement the EUT is placed on turntable which is 0.8m above ground plane. And above 1GHz measurement EUT was placed on low permittivity and low tangent turn table which is 1.5m above ground plane.
2. The turntable shall be rotated for 360 degrees to determine the position of maximum emission level.
3. EUT is set 3m away from the receiving antenna, which is varied from 1m to 4m to find out the highest emissions.
4. Maximum procedure was performed on the six highest emissions to ensure EUT compliance.
5. And also, each emission was to be maximized by changing the polarization of receiving antenna both horizontal and vertical.
6. Repeat above procedures until the measurements for all frequencies are complete.
7. The test frequency range from 9KHz to 25GHz per FCC PART 15.33(a).

Note:

For battery operated equipment, the equipment tests shall be performed using a new battery.

4.4 Test Result

PASS

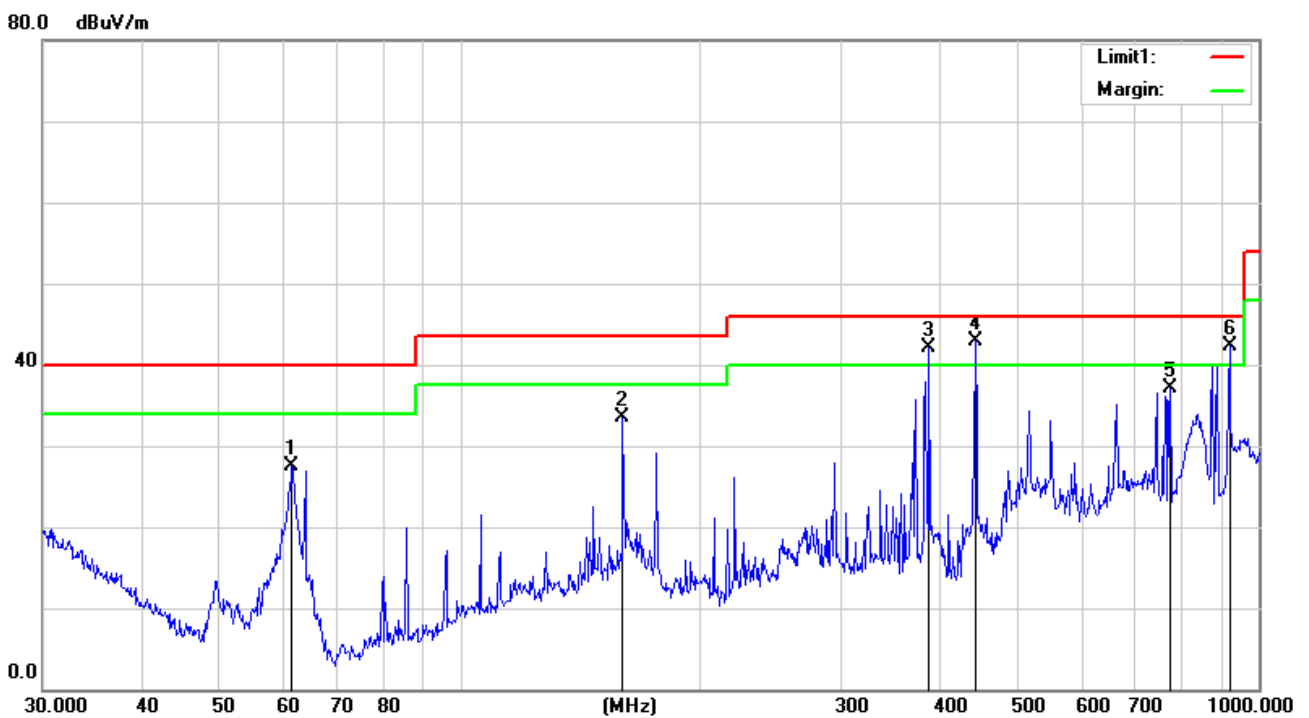
All the test modes completed for test. The worst case of Radiated Emission is CH 2402; the test data of this mode was reported.



Below 1GHz Test Results:

EUT :	gamesir game controllers	Model Name :	GameSir-T4
Temperature :	24 °C	Relative Humidity :	54%
Pressure :	1010 hPa	Test Date :	2018-12-20
Test Mode :	Running	Polarization :	Horizontal
Test Power :	DC 3.7V by PC AC 230V/50Hz		

No.	Frequency (MHz)	Reading (dBUV)	Correction factor(dB/m)	Result (dBUV/m)	Limit (dBUV/m)	Margin (dB)	Degree (deg.)	Height (cm)	Remark
1	61.5618	49.26	-21.82	27.44	40.00	-12.56	34.00	100.00	QP
2	159.7844	49.30	-15.80	33.50	43.50	-10.00	86.00	100.00	QP
3!	386.6338	55.92	-13.76	42.16	46.00	-3.84	120.00	100.00	QP
4*	441.7425	55.46	-12.65	42.81	46.00	-3.19	49.00	100.00	QP
5	774.1584	45.11	-7.91	37.20	46.00	-8.80	150.00	100.00	QP
6!	919.2866	48.36	-6.02	42.34	46.00	-3.66	180.00	100.00	QP

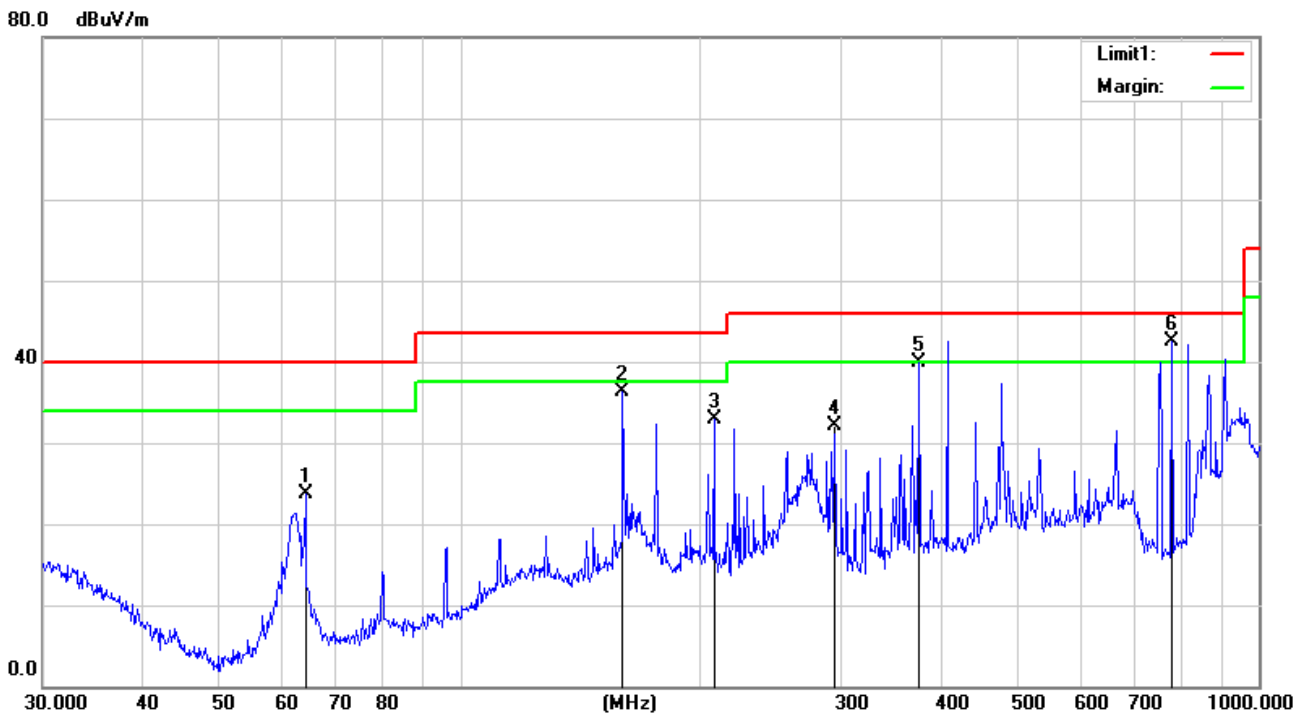


Remark: Transd = Cable lose + Antenna factor - Pre-amplifier; Margin = Limit – Level



EUT :	gamesir game controllers	Model Name :	GameSir-T4
Temperature :	24 °C	Relative Humidity :	54%
Pressure :	1010 hPa	Test Date :	2018-12-20
Test Mode :	Running	Polarization :	Vertical
Test Power :	DC 3.7V by PC AC 230V/50Hz		

No.	Frequency (MHz)	Reading (dBuV)	Correction factor(dB/m)	Result (dBuV/m)	Limit (dBuV/m)	Margin (dB)	Degree (deg.)	Height (cm)	Remark
1	63.9828	47.52	-23.91	23.61	40.00	-16.39	45.00	140.00	QP
2	159.7844	49.58	-13.33	36.25	43.50	-7.25	105.00	100.00	QP
3	207.8501	48.29	-15.36	32.93	43.50	-10.57	145.00	100.00	QP
4	294.1137	46.24	-14.23	32.01	46.00	-13.99	96.00	100.00	QP
5	375.9384	53.24	-13.28	39.96	46.00	-6.04	88.00	100.00	QP
6*	776.8777	49.39	-6.92	42.47	46.00	-3.53	204.00	100.00	QP



Remark: Transd = Cable lose + Antenna factor - Pre-amplifier; Margin = Limit – Level

Remark:

- (1) Measuring frequencies from 9 KHz to the 1 GHz, Radiated emission test from 9KHz to 30MHz was verified, and no any emission was found except system noise floor.
- (2) * denotes emission frequency which appearing within the Restricted Bands specified in provision of 15.205, then the general radiated emission limits in 15.209 apply.
- (3) The IF bandwidth of EMI Test Receiver between 30MHz to 1GHz was 120KHz, 1 MHz for measuring above 1 GHz, below 30MHz was 10KHz.



Above 1 GHz Test Results:
CH Low (2402MHz)

Horizontal:

Frequency	Meter Reading	Factor	Emission Level	Limits	Margin	Detector Type
(MHz)	(dB μ V)	(dB)	(dB μ V/m)	(dB μ V/m)	(dB)	
2402	106.48	-5.84	100.64	114	-13.36	peak
2402	84.35	-5.84	78.51	94	-15.49	AVG
4804	58.46	-3.64	54.82	74	-19.18	peak
4804	49.32	-3.64	45.68	54	-8.32	AVG
7206	58.61	-0.95	57.66	74	-16.34	peak
7206	43.15	-0.95	42.2	54	-11.8	AVG

Remark: Factor = Antenna Factor + Cable Loss – Pre-amplifier.

Vertical:

Frequency	Meter Reading	Factor	Emission Level	Limits	Margin	Detector Type
(MHz)	(dB μ V)	(dB)	(dB μ V/m)	(dB μ V/m)	(dB)	
2402	107.26	-5.84	101.42	114	-12.58	peak
2402	84.49	-5.84	78.65	94	-15.35	AVG
4804	63.28	-3.64	59.64	74	-14.36	peak
4804	39.22	-3.64	35.58	54	-18.42	AVG
7206	52.13	-0.95	51.18	74	-22.82	peak
7206	40.17	-0.95	39.22	54	-14.78	AVG

Remark: Factor = Antenna Factor + Cable Loss – Pre-amplifier.



CH Middle (2440MHz)

Horizontal:

Frequency	Meter Reading	Factor	Emission Level	Limits	Margin	Detector Type
(MHz)	(dB μ V)	(dB)	(dB μ V/m)	(dB μ V/m)	(dB)	
2440	107.63	-5.71	101.92	114	-12.08	peak
2440	82.49	-5.71	76.78	94	-17.22	AVG
4880	61.35	-3.51	57.84	74	-16.16	peak
4880	42.16	-3.51	38.65	54	-15.35	AVG
7320	56.18	-0.82	55.36	74	-18.64	peak
7320	37.63	-0.82	36.81	54	-17.19	AVG

Remark: Factor = Antenna Factor + Cable Loss – Pre-amplifier.

Vertical:

Frequency	Meter Reading	Factor	Emission Level	Limits	Margin	Detector Type
(MHz)	(dB μ V)	(dB)	(dB μ V/m)	(dB μ V/m)	(dB)	
2440	108.36	-5.71	102.65	114	-11.35	peak
2440	82.94	-5.71	77.23	94	-16.77	AVG
4880	61.39	-3.51	57.88	74	-16.12	peak
4880	41.08	-3.51	37.57	54	-16.43	AVG
7320	58.47	-0.82	57.65	74	-16.35	peak
7320	38.66	-0.82	37.84	54	-16.16	AVG

Remark: Factor = Antenna Factor + Cable Loss – Pre-amplifier.



CH High (2480MHz)

Horizontal:

Frequency	Meter Reading	Factor	Emission Level	Limits	Margin	Detector Type
(MHz)	(dB μ V)	(dB)	(dB μ V/m)	(dB μ V/m)	(dB)	
2480	106.52	-5.65	100.87	114	-13.13	peak
2480	83.62	-5.65	77.97	94	-16.03	AVG
4960	59.34	-3.43	55.91	74	-18.09	peak
4960	43.82	-3.43	40.39	54	-13.61	AVG
7440	61.54	-0.75	60.79	74	-13.21	peak
7440	43.89	-0.75	43.14	54	-10.86	AVG

Remark: Factor = Antenna Factor + Cable Loss – Pre-amplifier.

Vertical:

Frequency	Meter Reading	Factor	Emission Level	Limits	Margin	Detector Type
(MHz)	(dB μ V)	(dB)	(dB μ V/m)	(dB μ V/m)	(dB)	
2480	108.61	-5.65	102.96	114	-11.04	peak
2480	83.49	-5.65	77.84	94	-16.16	AVG
4960	56.74	-3.43	53.31	74	-20.69	peak
4960	41.38	-3.43	37.95	54	-16.05	AVG
7440	52.29	-0.75	51.54	74	-22.46	peak
7440	40.31	-0.75	39.56	54	-14.44	AVG

Remark: Factor = Antenna Factor + Cable Loss – Pre-amplifier.

Remark :

- (1) Measuring frequencies from 1 GHz to the 25 GHz .
- (2) "F" denotes fundamental frequency; "H" denotes spurious frequency. "E" denotes band edge frequency.
- (3) * denotes emission frequency which appearing within the Restricted Bands specified in provision of 15.205, then the general radiated emission limits in 15.209 apply.
- (4) Data of measurement within this frequency range shown "---" in the table above means the reading of emissions are attenuated more than 20dB below the permissible limits or the field strength is too small to be measured.
- (5) The IF bandwidth of EMI Test Receiver between 30MHz to 1GHz was 120KHz, 1 MHz for measuring above 1 GHz, below 30MHz was 10KHz. The resolution bandwidth of test receiver/spectrum analyzer is 1MHz and video bandwidth is 3MHz for peak measurement with peak detector at frequency above 1GHz. The resolution bandwidth of test receiver/spectrum analyzer is 1MHz and video bandwidth is 10Hz for Average measurement with peak detection at frequency above 1GHz.
- (6) When the test results of Peak Detected below the limits of Average Detected, the Average Detected is not need completed. For example: Top Channel at Fundamental 73.16dB μ V/m(PK Value) <93.98(AV Limit), at harmonic 53.20 dB μ V/m(PK Value) <54 dB μ V/m(AV Limit), the Average Detected not need to completed.
- (7) All modes of operation were investigated and the worst-case emissions are reported.



5 BAND EDGE

5.1 Limits

FCC PART 15.249(d) Emissions radiated outside of the specified frequency bands, except for harmonics, shall be attenuated by at least 50 dB below the level of the fundamental or to the general radiated emission limits in §15.209, whichever is the lesser attenuation.

5.2 Test Procedure

The band edge compliance of RF radiated emission should be measured by following the guidance in ANSIC63.10 with respect to maximizing the emission by rotating the EUT, measuring the emission while the EUT is situated in three orthogonal planes (if appropriate), adjusting the measurement antenna height and polarization etc. Set RBW to 100KHz and VBW to 300KHz to measure the peak field strength and set RBW to 1MHz and VBW to 10Hz to measure the average radiated field strength. The conducted RF band edge was measured by using a spectrum analyzer. Set span wide enough to capture the highest in-band emission and the emission at the band edge. Set RBW to 100 KHz and VBW to 300 KHz, to measure the conducted peak band edge.



5.3 Test Result

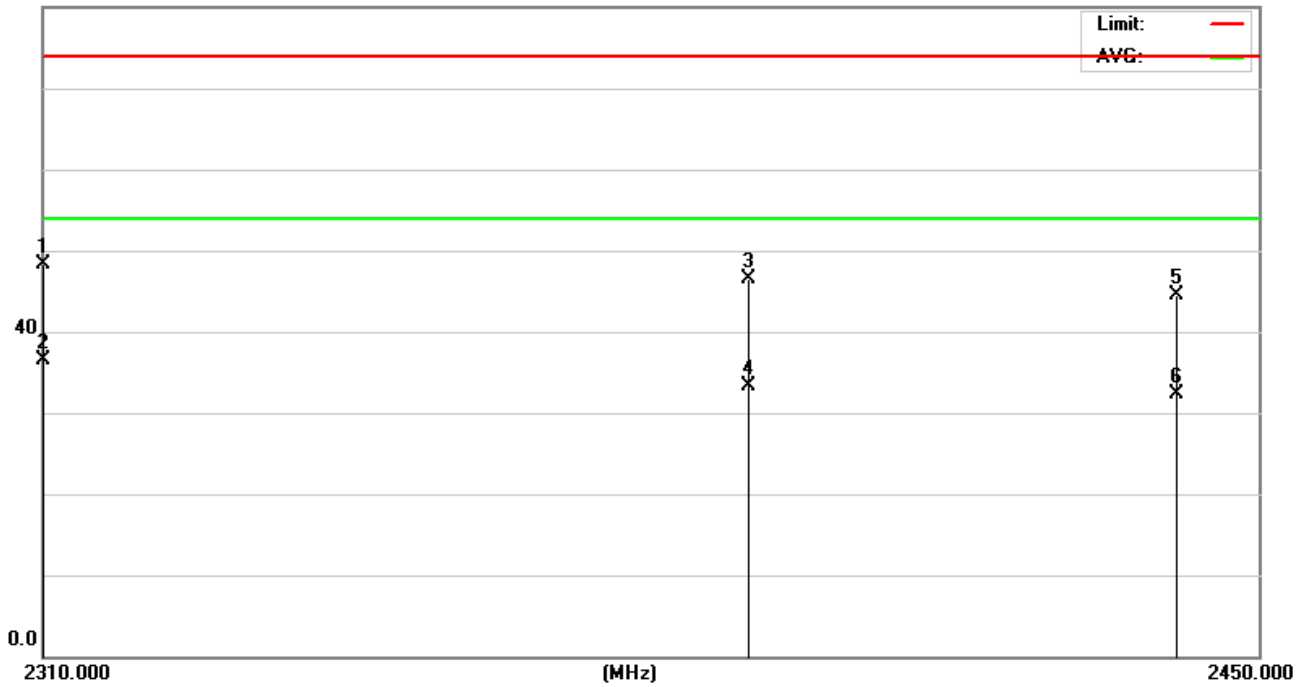
PASS

Radiated Band Edge Test:

Operation Mode: TX CH Low (2402MHz)

Horizontal (Worst case)

80.0 dBuV/m

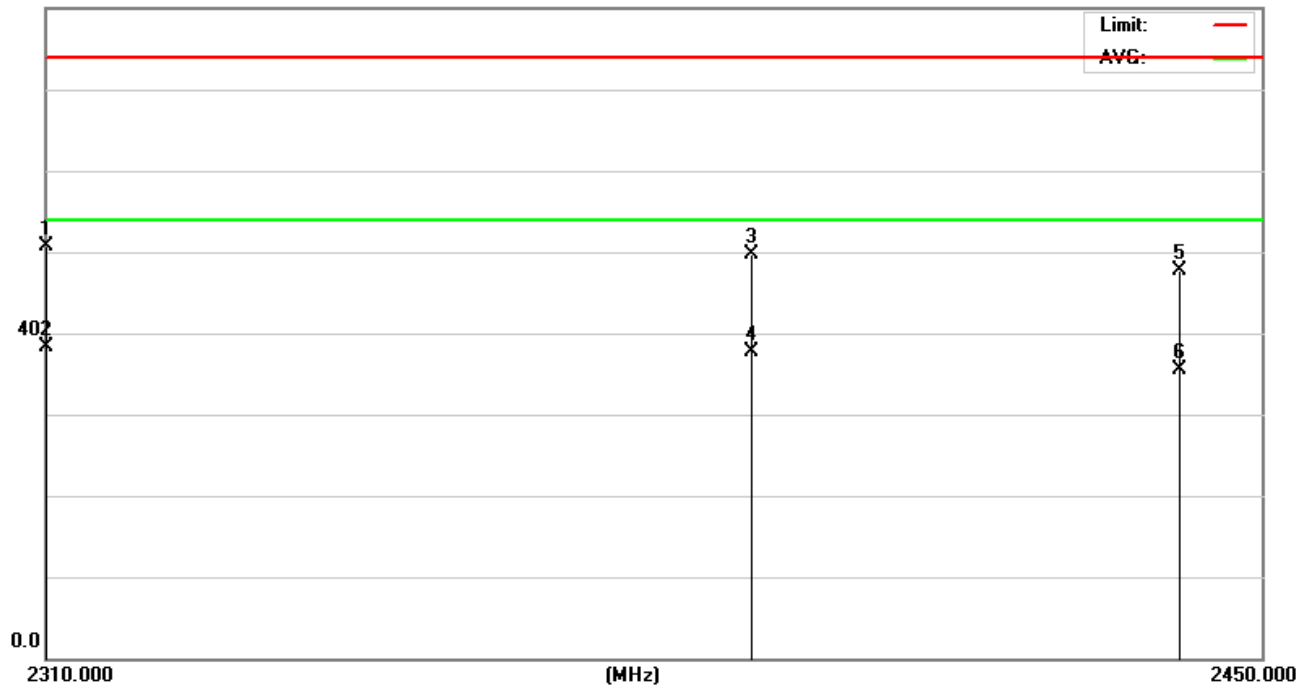


No.	Mk.	Freq.	Reading Level	Correct Factor	Measurement	Limit	Over	Antenna Height	Table Degree	Comment
		MHz	dBuV	dB	dBuV/m	dBuV/m	dB	cm	degree	
1		2310.000	52.17	-3.87	48.30	74.00	-25.70	160	163	
2	*	2310.000	40.33	-3.87	36.46	54.00	-17.54	160	205	
3		2390.000	49.68	-3.14	46.54	74.00	-27.46	155	48	
4		2390.000	36.45	-3.14	33.31	54.00	-20.69	155	127	
5		2440.000	47.33	-2.77	44.56	74.00	-29.44	155	142	
6		2440.000	35.12	-2.77	32.35	54.00	-21.65	155	142	



Vertical:

80.0 dBuV/m

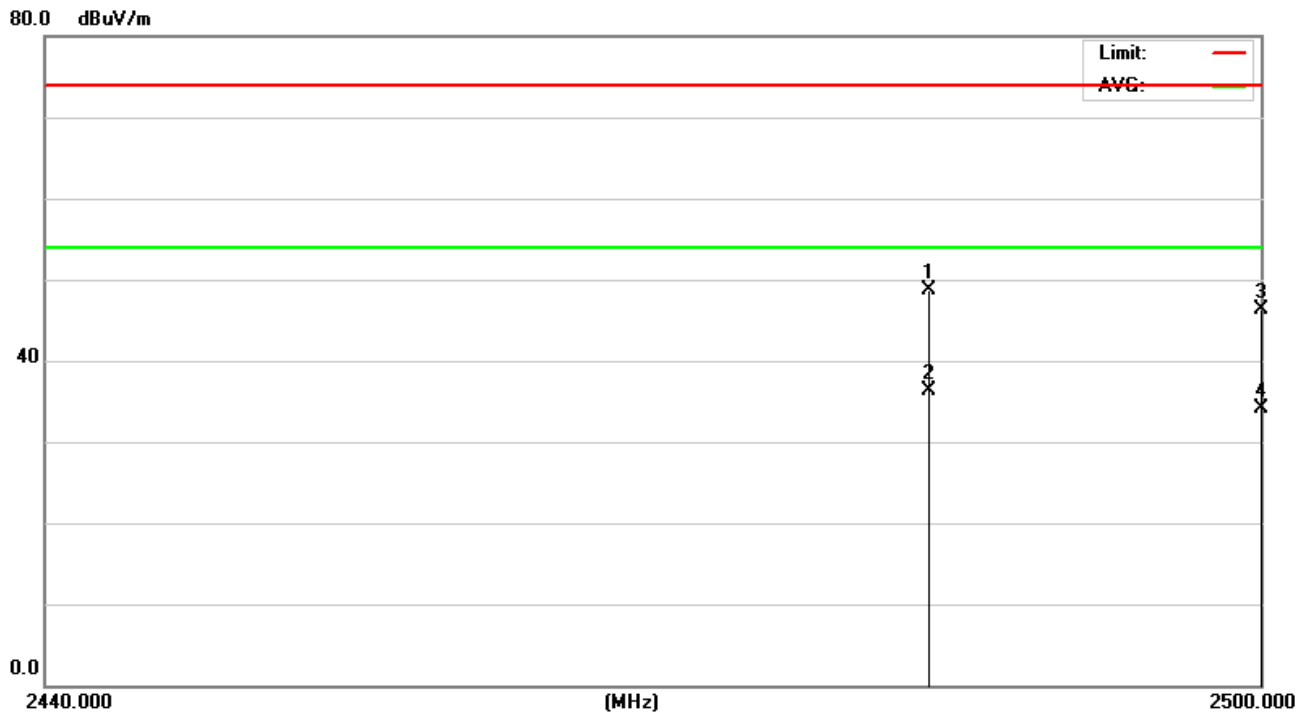


No.	Mk.	Freq. MHz	Reading Level dBuV	Correct Factor dB	Measure- ment dBuV/m	Limit dBuV/m	Over dB	Detector	Antenna Height cm	Table Degree degree	Comment
1		2310.000	54.57	-3.87	50.70	74.00	-23.30	peak	155	78	
2	*	2310.000	42.11	-3.87	38.24	54.00	-15.76	AVG	155	100	
3		2390.000	52.86	-3.14	49.72	74.00	-24.28	peak	155	120	
4		2390.000	40.79	-3.14	37.65	54.00	-16.35	AVG	155	120	
5		2440.000	50.55	-2.77	47.78	74.00	-26.22	peak	155	76	
6		2440.000	38.36	-2.77	35.59	54.00	-18.41	AVG	155	76	



Operation Mode: TX CH High (2480MHz)

Horizontal (Worst case)

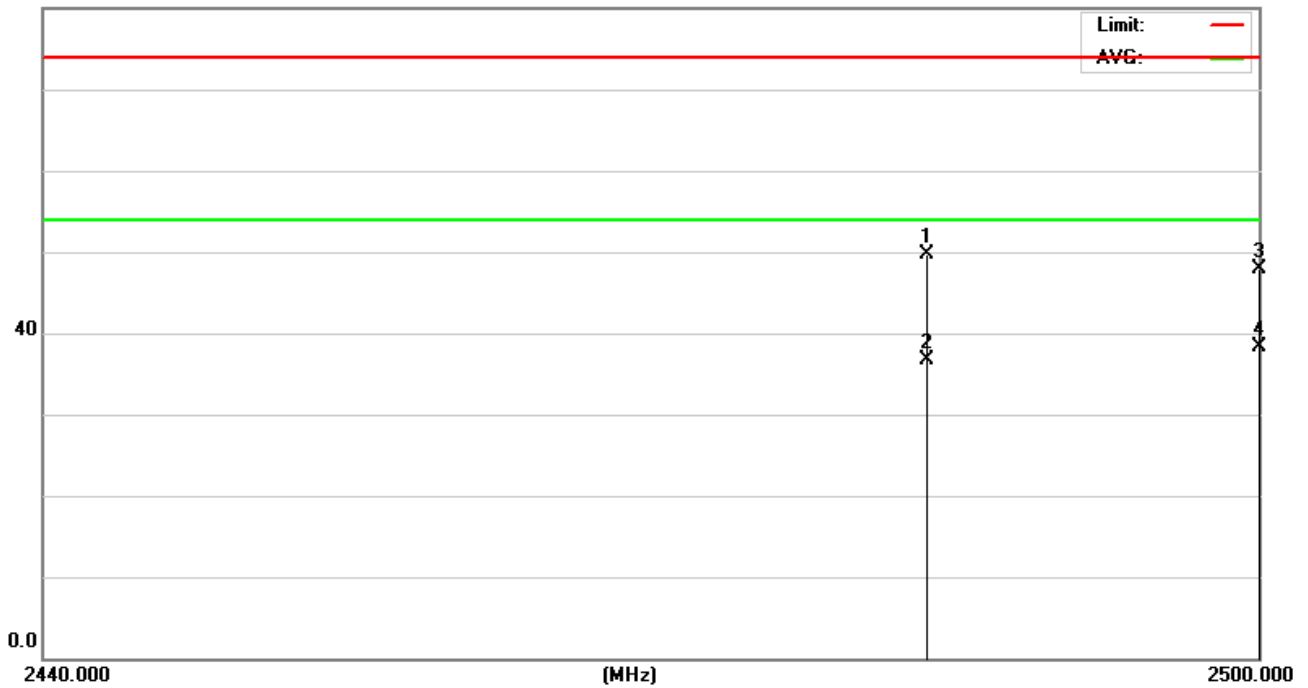


No.	Mk.	Freq. MHz	Reading Level dBuV	Correct Factor dB	Measure- ment dBuV/m	Limit dBuV/m	Over dB	Detector	Antenna Height cm	Table Degree degree	Comment
1		2483.500	51.13	-2.45	48.68	74.00	-25.32	peak	155	145	
2	*	2483.500	38.77	-2.45	36.32	54.00	-17.68	AVG	155	145	
3		2500.000	48.69	-2.33	46.36	74.00	-27.64	peak	155	36	
4		2500.000	36.36	-2.33	34.03	54.00	-19.97	AVG	155	36	



Vertical:

80.0 dBuV/m



No.	Mk.	Freq. MHz	Reading Level dBuV	Correct Factor dB	Measure- ment dBuV/m	Limit dBuV/m	Over dB	Detector	Antenna Height cm	Table Degree	Comment
1		2483.500	52.14	-2.45	49.69	74.00	-24.31	peak	155	70	
2		2483.500	39.25	-2.45	36.80	54.00	-17.20	AVG	155	70	
3		2500.000	50.33	-2.33	48.00	74.00	-26.00	peak	155	86	
4	*	2500.000	40.69	-2.33	38.36	54.00	-15.64	AVG	155	86	



6 OCCUPIED BANDWIDTH MEASUREMENT

6.1 Test Setup

Same as Radiated Emission Measurement

6.2 Test Procedure

1. The EUT was placed on a turn table which is 0.8m above ground plane.
2. Set EUT as normal operation.
3. Based on ANSI C63.10 section 6.9.2: RBW= 30KHz. VBW= 100 KHz, Span=4MHz.
4. The useful radiated emission from the EUT was detected by the spectrum analyser with peak detector.

6.3 Measurement Equipment Used

Same as Radiated Emission Measurement

6.4 Test Result

PASS

Frequency	20dB Bandwidth (MHz)	Result
2402 MHz	0.827	PASS
2440 MHz	0.826	PASS
2480 MHz	0.830	PASS

CH: 2402MHz





CH: 2440MHz



CH: 2480MHz





7 ANTENNA REQUIREMENT

Standard Applicable

For intentional device, according to FCC 47 CFR Section 15.203, an intentional radiator shall be designed to ensure that no antenna other than that furnished by the responsible party shall be used with the device. And according to FCC 47 CFR Section 15.249, if transmitting antennas of directional gain greater than 6dBi are used, the power shall be reduced by the amount in dB that the directional gain of the antenna exceeds 6dBi.

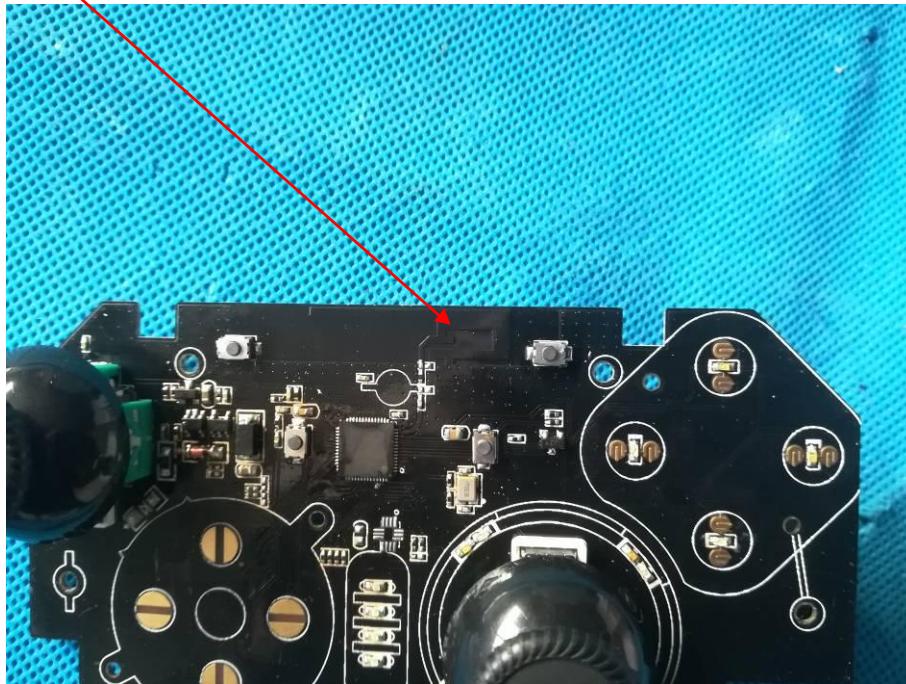
Refer to statement below for compliance.

The manufacturer may design the unit so that the user can replace a broken antenna, but the use of a standard antenna jack or electrical connector is prohibited. Further, this requirement does not apply to intentional radiators that must be professionally installed.

Antenna Connected Construction

The antenna used in this product is a Internal Antenna, The directional gains of antenna used for transmitting is 0dBi.

ANTENNA



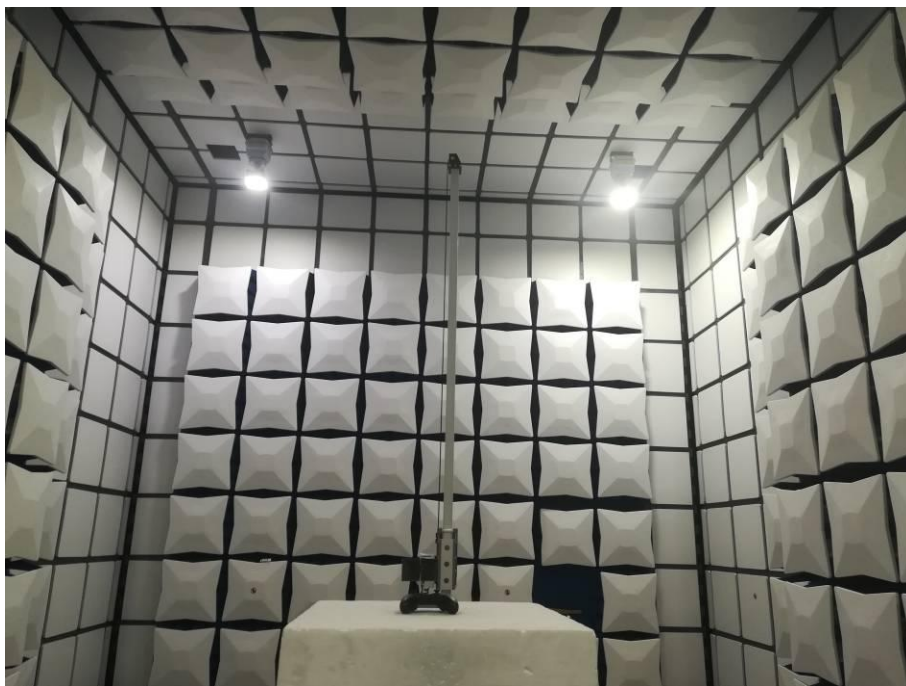
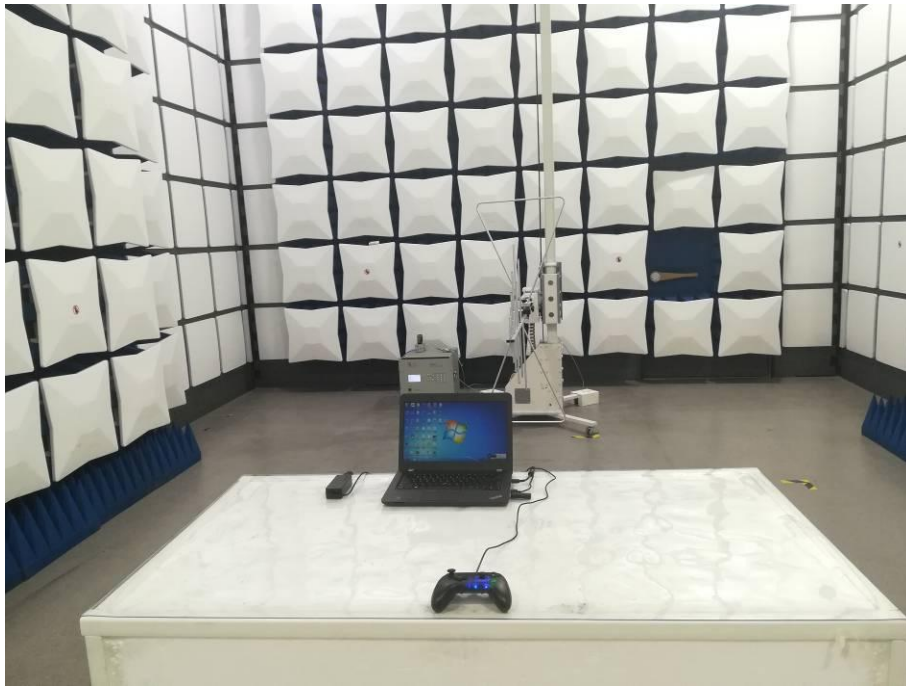


8 PHOTOGRAPH OF TEST

Conducted Emission



Radiated Emission





EUT
Photo 1



Photo 2



Photo 3



Photo 4



Photo 5



Photo 6



Photo 7



Photo 8



Photo 9

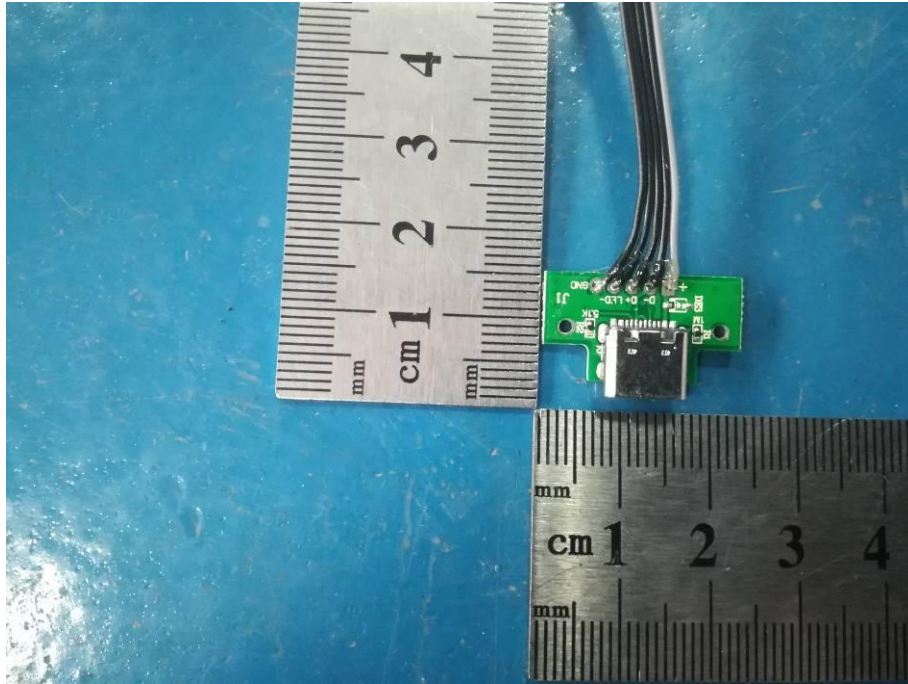


Photo 10

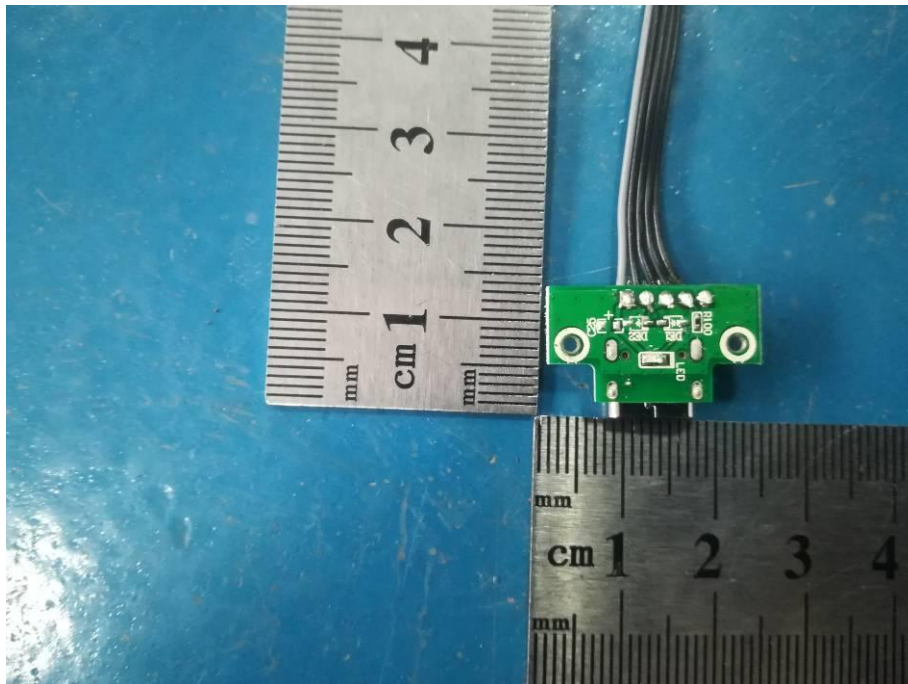


Photo 11



Photo 12

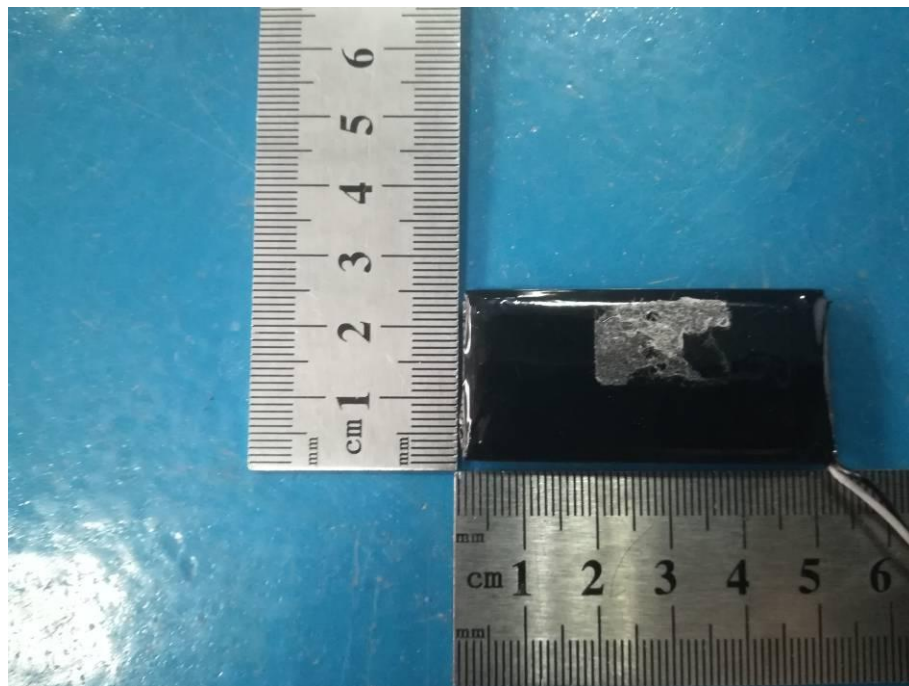


Photo 13

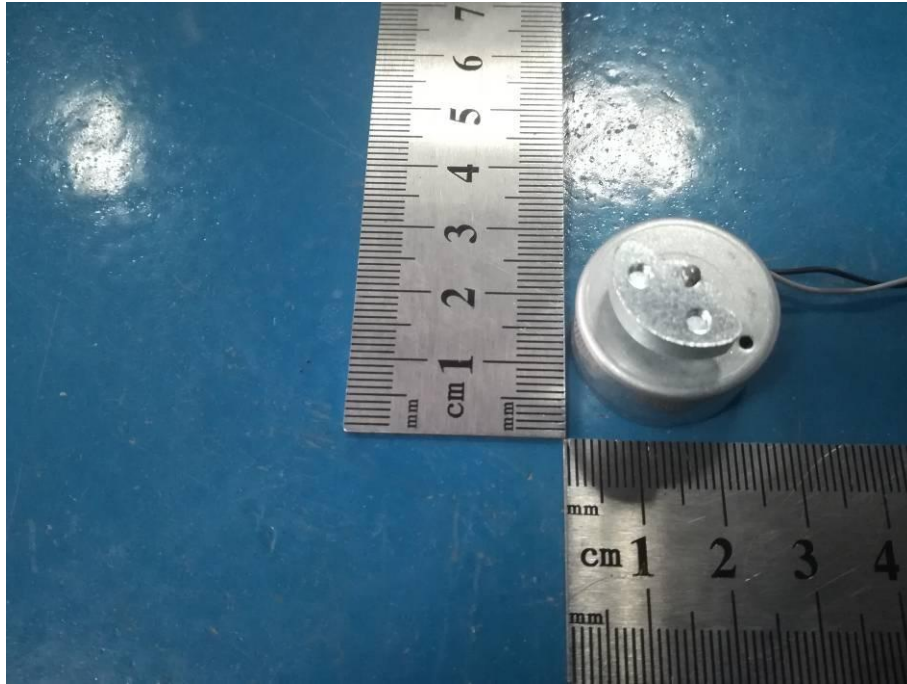


Photo 14



Photo 15

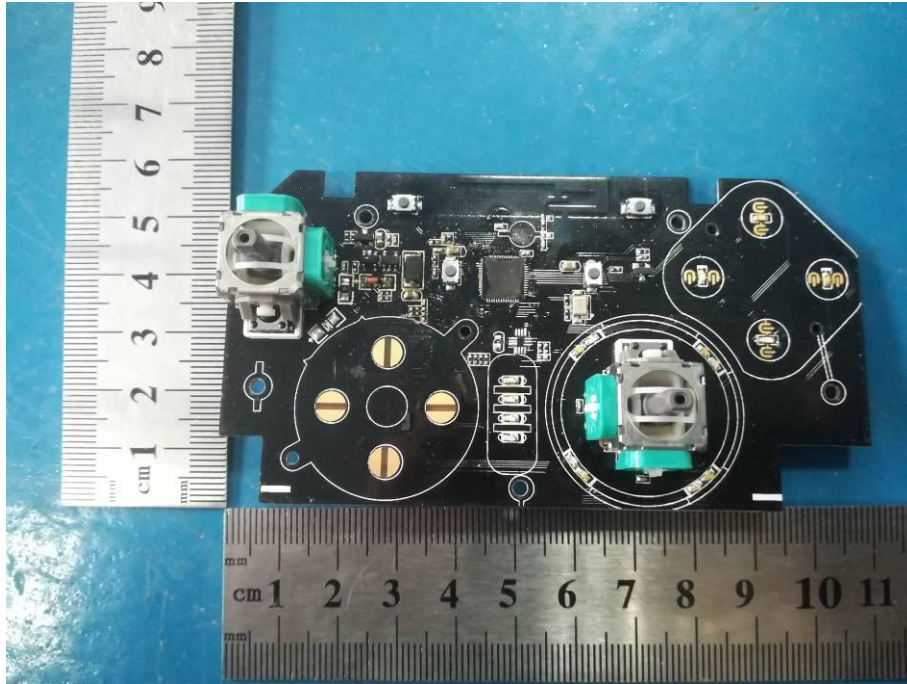


Photo 16

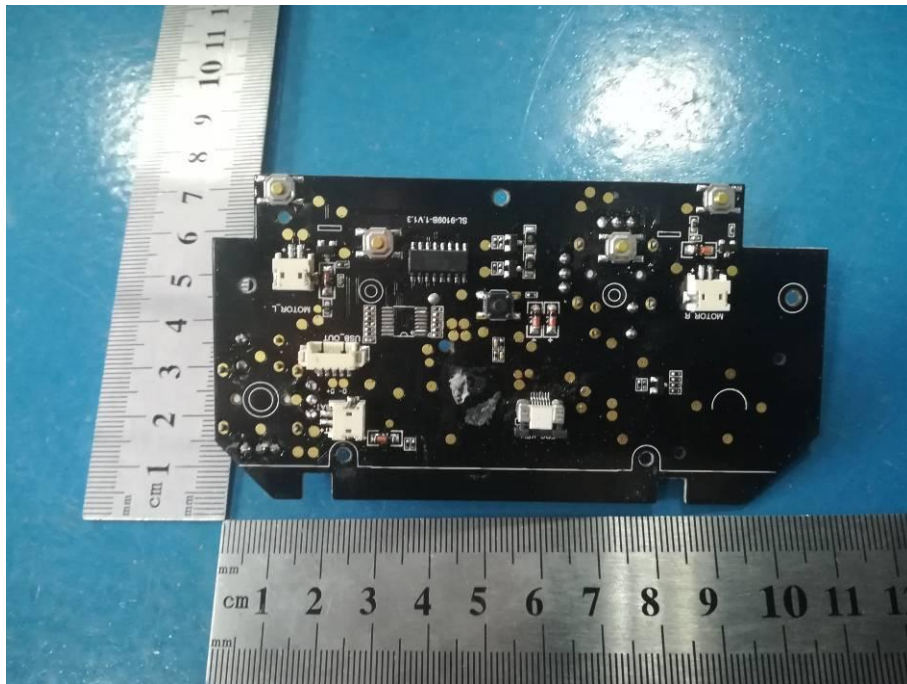




Photo 17



*****THE END OF REPORT*****