

Lumi

# Fast setting

- 1 Downloading client1. download and install at the application store search "lume Cube" (Apple)

# Fast setting

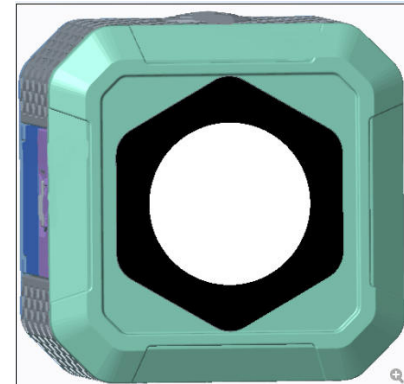
Connect new and new equipment

1: advanced mobile phone [set] - [Bluetooth],  
turn on Bluetooth

2: click on the APP on the mobile phone, search  
the link (LumeCubeL), and automatically match  
the connection. If the connection is not  
successful, see [LumeCubeL] press the button to  
trigger.

# Product introduction

1: Operation Description  
Open key: press open LED light (adjust 1-10 gear brightness), long press 2-3 seconds to close LED lamp (no Bluetooth connection 1 minutes after entering the shutdown mode).  
USB cover: toggle open, charging  
When the charge is completed, it needs to be covered. (charging LED will be shiny and full of lights at the button Out)



# Basic parameters

- Input charging: 5V /650MABluetooth 4,  
Bluetooth distance 10MSupport APPBattery:  
650MA (high temperature battery)Waterproof  
10MFor 50 minutes at normal temperature,  
the temperature is higher than 78 degree  
protection.Standby current: 80UA

#### FCC Statement

This device complies with part 15 of the FCC rules. Operation is subject to the following two conditions: (1) this device may not cause harmful interference, and (2) this device must accept any interference received, including interference that may cause undesired operation.

Caution: Changes or modifications not expressly approved by the party responsible for compliance could void the user's authority to operate the equipment.

NOTE: This equipment has been tested and found to comply with the limits for a Class B digital device, pursuant to part 15 of the FCC Rules. These limits are designed to provide reasonable protection against harmful interference in a residential installation. This equipment generates uses and can radiate radio frequency energy and, if not installed and used in accordance with the instructions, may cause harmful interference to radio communications. However, there is no guarantee that interference will not occur in a particular installation. If this equipment does cause harmful interference to radio or television reception, which can be determined by turning the equipment off and on, the user is encouraged to try to correct the interference by one or more of the following measures:

- Reorient or relocate the receiving antenna.
- Increase the separation between the equipment and receiver.
- Connect the equipment into an outlet on a circuit different from that to which the receiver is connected.
- Consult the dealer or an experienced radio/TV technician for help

#### Radiation Exposure Statement

The device has been evaluated to meet general RF exposure requirement. The device can be used in portable exposure condition without restriction.

#### ISED Statement

- English: This device complies with Industry Canada license-exempt RSS standard(s). Operation is subject to the following two conditions: (1) This device may not cause interference, and (2) This device must accept any interference, including interference that may cause undesired operation of the device. The digital apparatus complies with Canadian CAN ICES-003 (B)/NMB-3(B).

- French: Le présent appareil est conforme aux CNR d'Industrie Canada applicables aux appareils radio exempts de licence. L'exploitation est autorisée aux deux conditions suivantes: (1) l'appareil ne doit pas produire de brouillage, et (2) l'utilisateur de l'appareil doit accepter tout brouillage radioélectrique subi, même si le brouillage est susceptible d'en compromettre le fonctionnement. L'appareil numérique est conforme à la canadienne CAN ICES-003 (B)/NMB-3(B).

#### Radiation Exposure Statement

The device has been evaluated to meet general RF exposure requirement. The device can be used in portable exposure condition without restriction. L'appareil a été évalué pour répondre aux exigences générales d'exposition aux radiofréquences. L'appareil peut être utilisé en condition d'exposition portable sans restriction.