



www.1more.com

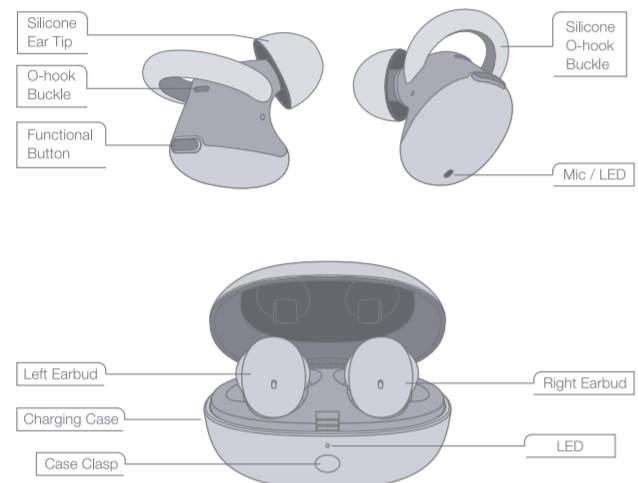


E1026BT



1MORE Stylish True Wireless In-Ear Headphones (User Guide)  
1MORE Stylish 时尚真无线耳机 (用户指南)

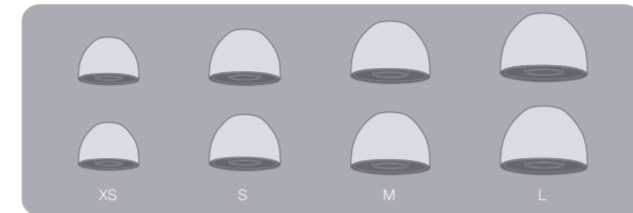
## Product Instruction



· 15 ·

## Fit

### Silicone Ear Tip

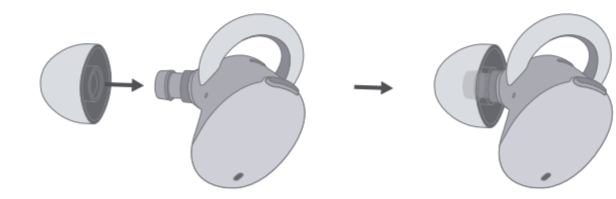


### Silicone O-hook Buckle

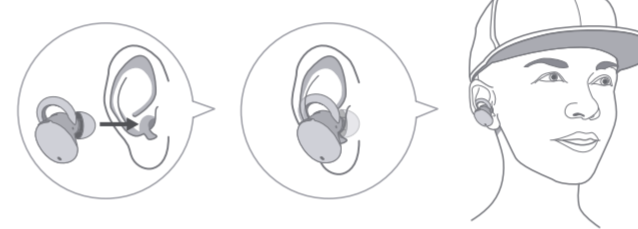


· 16 ·

## Replace

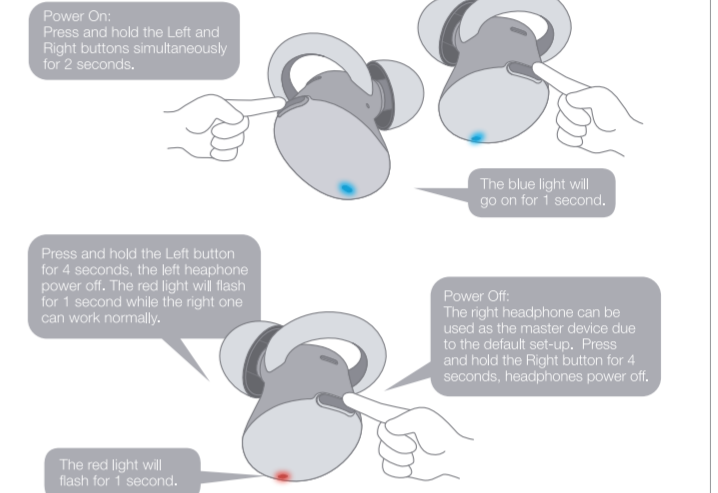


## Placement



· 17 ·

## Power

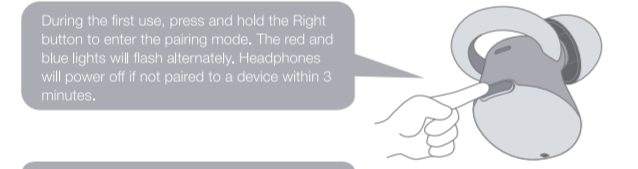


· 18 ·

## Headphones Pairing



### Bluetooth Pairing To The Device



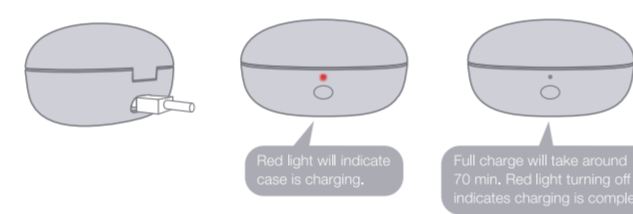
#### \*Pairing when headphones successfully paired:

- Press and hold the Right button for 2 seconds to start pairing mode when powered off, headphones pair to the recorded device automatically.
- Press and hold the Right button for 2 seconds when power on and no phone-calling, headphones will skip the recorded device and pair to the new one.

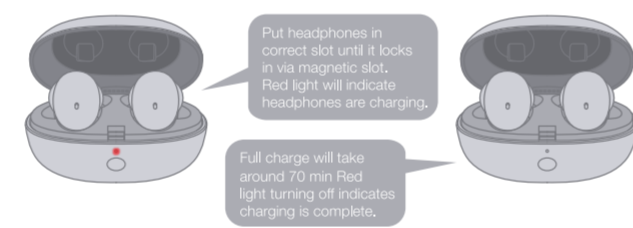
· 19 ·

## Charging

① To charge the case with the Micro-USB cable.

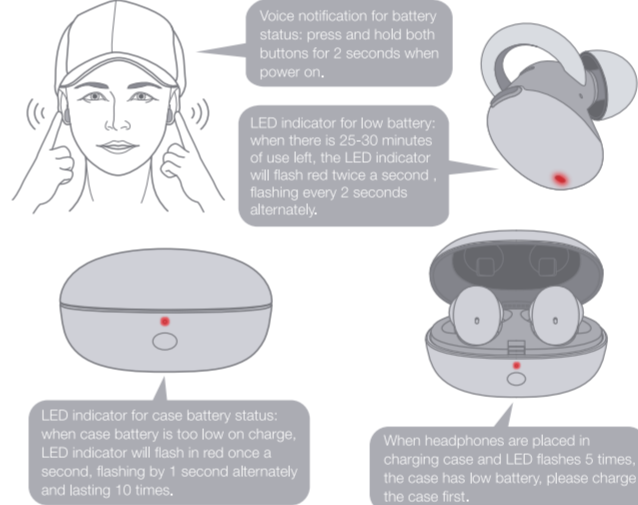


### ② To charge the headphones with the case.



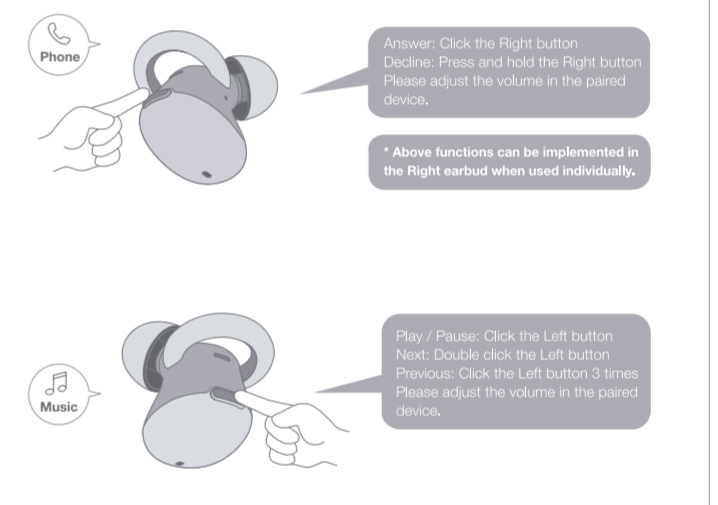
· 20 ·

## Battery Notification



· 21 ·

## Key Functions



· 22 ·

## Extra Functions

If the headphones cannot pair normally when power on, click both buttons simultaneously for 4 times to start the re-searching mode. Unpairing the headphones and the device: press and hold both buttons for 8 seconds, and then start the automatic searching mode. Out of Wireless Connection Range: The headphones will try to reconnect for 5 minutes. Then they will turn off automatically if not connected to any device.

## Limited Warranty

1MORE Inc., (1MORE) warrants to the original retail purchaser that this product is to be free from defective materials and workmanship for a period of one year from the date of purchase, if it is properly used and maintained. If this product proves defective in either material or workmanship, 1MORE, at its option, will (a) repair the product, or (b) replace the product, at no charge for parts or labor, if the product model is no longer available and cannot be repaired effectively or replaced with an identical model. 1MORE at its sole option may replace the unit with a current model of equal or greater value. In some cases, modification to the mounting surface may be required where a new model is substituted. 1MORE assumes no responsibility or liability for such modification. To obtain a repair or replacement under the terms of this warranty, please return to dealer first, if possible, and the dealer will direct you accordingly for repairs or replacement. You will be required to submit a copy of the original receipt.

Return shipping for exchanges/repairs is the sole responsibility of the original retail purchaser.

· 23 ·

## Limitations:

- This limited warranty does not cover failure of the product resulting from improper installation, misuse, abuse, accident, neglect, mishandling, or wear from ordinary use or environmental deterioration.
- This limited warranty does not cover cosmetic damage, including paint damage, or consequential damage to other components or premises which may result for any reason from the failure of the product.
- This limited warranty is null and void for products not used in accordance with 1MORE's instructions.
- This limited warranty is null and void for products with altered or missing serial numbers and for products not purchased from an authorized dealer.
- This limited warranty terminates if you sell or otherwise transfer this product to another party.

## We Appreciate Your Business

We know you will enjoy new 1MORE headphones as much as we do. At 1MORE, we value your satisfaction. If you would like more details on this product or any of our other products, please visit us online by scanning the QR code. Go to [www.1more.com](http://www.1more.com) and sign up for VIP, and 1MORE will treat you like one.

· 24 ·

## Tips

1. Please read this instruction manual carefully and retain for future reference.
2. Please fully charge the battery before first use.
3. If the headphones have been unused for more than 3 months, we recommend that you charge them. This will improve battery capacity.
4. Only use chargers that are FCC (Federal Communications Commission) approved.
5. In dry environments, static electricity may numb your ear. This is not related to the quality of the product.

## Safety Information

1. Never disassemble the headphones. There are no user-serviceable parts inside.
2. Do not expose the headphones to temperatures below 32 °F (0 °C) or to temperatures above 113 °F (45 °C).
3. Do not use the headphones in a thunderstorm. This could prevent the headphones from working properly, and also increase your chance of being electrically shocked.
4. Do not use oil or any volatile liquid to clean this product.
5. Do not listen at high volumes for extended periods of time.
6. Do not use the headphones while operating a motor vehicle. Do not use the headphones any time it would be dangerous to be unaware of noises around you.
7. Adult supervision is required for children age 6 and under.
8. If you don't feel comfortable after wearing the headphones, please refer to an aurist for advice on whether or not in-ear headphones are suitable for you.

· 25 ·

## FAQ

1. The headphones don't turn on. Check if your headphones have enough battery life. If not, please charge them for at least 30 minutes.
2. The headphones and my device do not connect, or take a long time to connect. 1) Check that your headphones are in the "discoverable" mode (red and blue lights flash alternately). 2) Make sure that your headphones are not connected to other devices, and that your device is not connected to other Bluetooth devices. 3) If headphones fail to connect, press L and R buttons 4 times simultaneously to restart pairing mode.
3. My Android device successfully connects to the headphones, but the headphones don't play music. After pairing successfully, on the Bluetooth menu of your device, tap the icon on the right of your device name and make sure the "Media Audio" option is on.
4. My Android device successfully connects to the headphones, but there is no sound from the headphones while making phone calls. After pairing successfully, on the Bluetooth menu of your device, tap the icon on the right of your device name and make sure the "Phone Audio" option is on.
5. The Bluetooth connection is not stable, causing some interruptions. 1) Try shortening the distance between your headphones and device. Avoid solid barriers in between. 2) Please keep away from strong interference sources, such as Wi-Fi and GPS. 3) Please make sure the Bluetooth antenna of your device is not blocked.
6. While using third party music/video player apps, some in-line remote control functions do not match those in the manual. Your operating system and the third party music/video player apps may have different settings for the in-line remote control functions. We recommend that you use the music/video player apps that your device has originally provided.
7. I adjusted the in-line remote control to the maximum volume, but the actual volume still sounds low. In different operating systems, especially some Android systems, the headphones and your device have separate volume control systems. Please adjust the volume controls on both the device and the headphones according to your preference.

· 26 ·

## WEEE

Electrical and electronic equipment, parts and batteries marked with this symbol must not be disposed of with normal household waste. It must be collected and disposed of separately to protect the environment.

Your 1MORE retailer will advise you of the correct way of disposal in your country.

## Safety Caution

Do not expose batteries or battery packs to excessive heat such as sunshine, fire or the like.

## CE

Hereby, 1MORE, declares that wireless headphone is in compliance with the essential requirement and relevant provisions of Directive 2014/53/EU.

Declaration for EU Compliance  
Operation Frequency/Max. RF power transmitted: 2400-2483.5MHz, Left side <100dBm, Right side <100dBm.

## FCC

This device complies with FCC radiation exposure limits set forth for an uncontrolled environment. This device complies with Part 15 of the FCC Rules. Operation is subject to the following two conditions: (1) this device may not cause harmful interference, and (2) this device must accept any interference received, including interference that may cause undesired operation.

· 27 ·

## Caution!

Any changes or modifications not expressly approved by the party responsible for compliance could void the user's authority to operate the equipment.

## Supplier's Declaration of Conformity

47 CFR § 2.1077 Compliance Information  
Unique Identifier: 2AF82E1026BT  
Trade Name: 1 MORE  
Model No.: E1026BT  
Responsible Party—U.S. Contact Information  
1MORE USA, Inc.,  
Address: 10225 Barnes Canyon Road, Suite A202, San Diego, California, 92121  
Tel: 1-855-551-6673  
E-Mail: [support@1moreusa.com](mailto:support@1moreusa.com)

Note: This equipment has been tested and found to comply with the limits for a Class B digital device, pursuant to Part 15 of the FCC Rules. These limits are designed to provide reasonable protection against harmful interference in a residential installation. This equipment generates, uses and can radiate radio frequency energy and, if not installed and used in accordance with the instructions, may cause harmful interference to radio communications. However, there is no guarantee that interference will not occur in a particular installation.

If this equipment does cause harmful interference to radio or television reception, which can be determined by turning the equipment off and on, the user is encouraged to try to correct the interference by one or more of the following measures:

- Reorient or relocate the receiving antenna.
- Increase the separation between the equipment and receiver.
- Connect the equipment into an outlet on a circuit different from that to which the receiver is connected.
- Consult the dealer or an experienced radio/TV technician for help.

Warning: changes or modifications not expressly approved by the party responsible for compliance could void the user's authority to operate the equipment.

· 28 ·