

**Report Number: EED32I00251309**

**Appendix B:SAR Measurement results Plots**

<b>Table of contents</b>
<b>UMTS Band II-Body</b>
<b>LTE Band II-Body</b>
<b>LTE Band IV-Body</b>
<b>LTE Band VII-Body</b>
<b>2.4G WIFI-Body</b>

Test Laboratory: CTI SAR Lab

**BW-X07HD UMTS Band II 9400CH Front Side 5mm-Repeated****DUT: HANDHELD VITALSIGNS MONITORING SYSTEM; Type: BW-X07HD; Serial: 55e0ba2b**

Communication System: UID 0, UMTS-FDD(WCDMA) (0); Communication System Band: Band II; Frequency: 1880 MHz; Duty Cycle: 1:1

Medium parameters used:  $f = 1880$  MHz;  $\sigma = 1.51$  S/m;  $\epsilon_r = 51.901$ ;  $\rho = 1000$  kg/m<sup>3</sup>

Phantom section: Flat Section

DASY Configuration:

- Probe: EX3DV4 - SN7328; ConvF(8.02, 8.02, 8.02); Calibrated: 2/28/2017;
- Sensor-Surface: 2mm (Mechanical Surface Detection),  $z = 1.0, 31.0$
- Electronics: DAE4 Sn1458; Calibrated: 2/22/2017
- Phantom: ELI v6.0; Type: QDOVA003AA; Serial: 2024
- DASY52 52.8.8(1222); SEMCAD X 14.6.10(7331)

**Configuration/Body/Area Scan (10x15x1):** Measurement grid:  $dx=15$ mm,  $dy=15$ mm

Maximum value of SAR (measured) = 0.966 W/kg

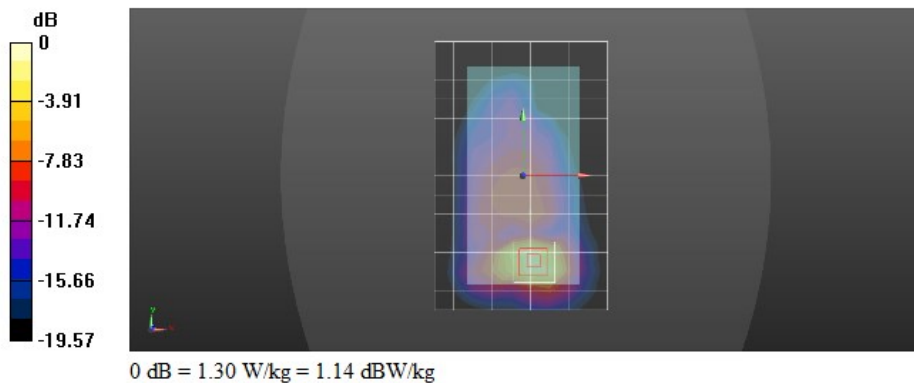
**Configuration/Body/Zoom Scan (5x5x7)/Cube 0:** Measurement grid:  $dx=8$ mm,  $dy=8$ mm,  $dz=5$ mm

Reference Value = 10.32 V/m; Power Drift = 0.01 dB

Peak SAR (extrapolated) = 1.61 W/kg

**SAR(1 g) = 0.949 W/kg; SAR(10 g) = 0.516 W/kg**

Maximum value of SAR (measured) = 1.30 W/kg



Test Laboratory: CTI SAR Lab

**BW-X07HD LTE Band II 20M QPSK 1RB#99 18700CH Front Side 5mm****DUT: HANDHELD VITALSIGNS MONITORING SYSTEM; Type: BW-X07HD; Serial: 55e0ba2b**

Communication System: UID 0, Generic LTE (0); Communication System Band: Band 2, E-UTRA/FDD (1850.0 - 1910.0 MHz); Frequency: 1860 MHz; Duty Cycle: 1:1

Medium parameters used:  $f = 1860$  MHz;  $\sigma = 1.489$  S/m;  $\epsilon_r = 52.001$ ;  $\rho = 1000$  kg/m<sup>3</sup>

Phantom section: Flat Section

DASY Configuration:

- Probe: EX3DV4 - SN7328; ConvF(8.02, 8.02, 8.02); Calibrated: 2/28/2017;
- Sensor-Surface: 2mm (Mechanical Surface Detection),  $z = 1.0, 31.0$
- Electronics: DAE4 Sn1458; Calibrated: 2/22/2017
- Phantom: ELI v6.0; Type: QDOVA003AA; Serial: 2024
- DASY52 52.8.8(1222); SEMCAD X 14.6.10(7331)

**Configuration/Body/Area Scan (10x15x1):** Measurement grid:  $dx=15$ mm,  $dy=15$ mm

Maximum value of SAR (measured) = 0.908 W/kg

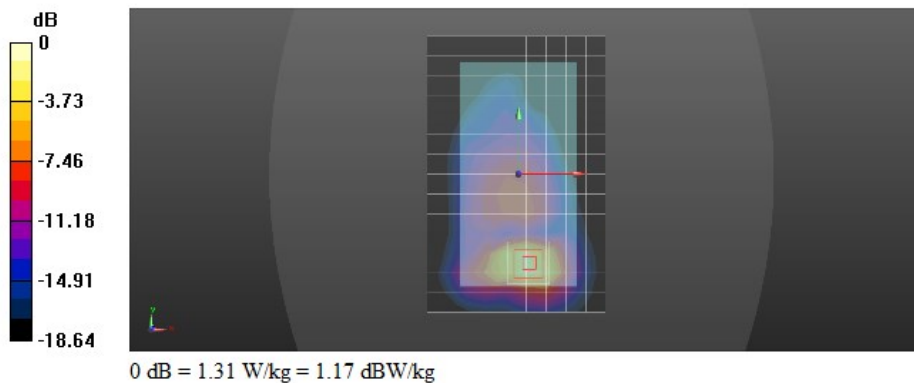
**Configuration/Body/Zoom Scan (5x5x7)/Cube 0:** Measurement grid:  $dx=8$ mm,  $dy=8$ mm,  $dz=5$ mm

Reference Value = 10.21 V/m; Power Drift = -0.06 dB

Peak SAR (extrapolated) = 1.63 W/kg

**SAR(1 g) = 0.956 W/kg; SAR(10 g) = 0.521 W/kg**

Maximum value of SAR (measured) = 1.31 W/kg



Test Laboratory: CTI SAR Lab

**BW-X07HD LTE Band IV 20M QPSK 1RB#99 20300CH Bottom Side 5mm****DUT: HANDHELD VITALSIGNS MONITORING SYSTEM; Type: BW-X07HD; Serial: 55e0ba2b**

Communication System: UID 0, Generic LTE (0); Communication System Band: Band 4, E-UTRA/FDD (1710.0 - 1755.0 MHz); Frequency: 1745 MHz; Duty Cycle: 1:1

Medium parameters used:  $f = 1745$  MHz;  $\sigma = 1.511$  S/m;  $\epsilon_r = 53.474$ ;  $\rho = 1000$  kg/m<sup>3</sup>

Phantom section: Flat Section

DASY Configuration:

- Probe: EX3DV4 - SN7328; ConvF(8.39, 8.39, 8.39); Calibrated: 2/28/2017;
- Sensor-Surface: 2mm (Mechanical Surface Detection),  $z = 1.0, 31.0$
- Electronics: DAE4 Sn1458; Calibrated: 2/22/2017
- Phantom: ELI v6.0; Type: QDOVA003AA; Serial: 2024
- DASY52 52.8.8(1222); SEMCAD X 14.6.10(7331)

**Configuration/Body/Area Scan (10x15x1):** Measurement grid:  $dx=15$ mm,  $dy=15$ mm

Maximum value of SAR (measured) = 1.07 W/kg

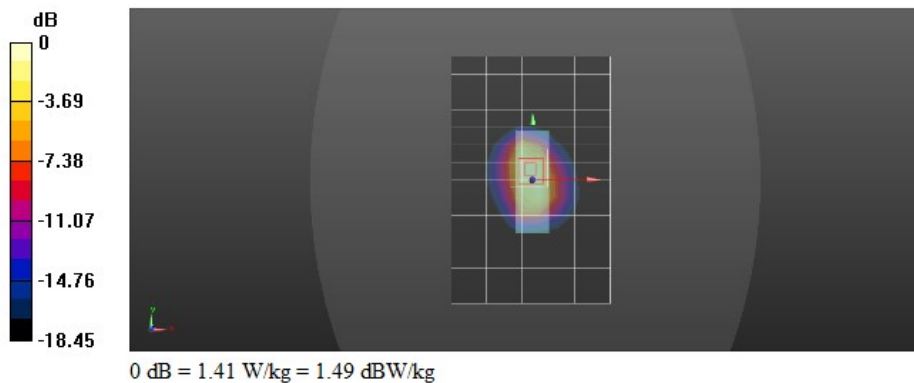
**Configuration/Body/Zoom Scan (5x5x7)/Cube 0:** Measurement grid:  $dx=8$ mm,  $dy=8$ mm,  $dz=5$ mm

Reference Value = 24.83 V/m; Power Drift = 0.11 dB

Peak SAR (extrapolated) = 1.76 W/kg

**SAR(1 g) = 1 W/kg; SAR(10 g) = 0.550 W/kg**

Maximum value of SAR (measured) = 1.41 W/kg



Test Laboratory: CTI SAR Lab

**BW-X07HD LTE Band VII 20M QPSK 1RB#0 21350CH Front Side 5mm****DUT: HANDHELD VITALSIGNS MONITORING SYSTEM; Type: BW-X07HD; Serial: 55e0ba2b**

Communication System: UID 0, Generic LTE (0); Communication System Band: Band 7, E-UTRA/FDD (2500.0 - 2570.0 MHz); Frequency: 2560 MHz; Duty Cycle: 1:1

Medium parameters used:  $f = 2560$  MHz;  $\sigma = 2.111$  S/m;  $\epsilon_r = 52.585$ ;  $\rho = 1000$  kg/m<sup>3</sup>

Phantom section: Flat Section

DASY Configuration:

- Probe: EX3DV4 - SN7328; ConvF(7.44, 7.44, 7.44); Calibrated: 2/28/2017;
- Sensor-Surface: 2mm (Mechanical Surface Detection),  $z = 1.0, 31.0$
- Electronics: DAE4 Sn1458; Calibrated: 2/22/2017
- Phantom: ELI v6.0; Type: QDOVA003AA; Serial: 2024
- DASY52 52.8.8(1222); SEMCAD X 14.6.10(7331)

**Configuration/Body/Area Scan (12x19x1):** Measurement grid:  $dx=12$ mm,  $dy=12$ mm

Maximum value of SAR (measured) = 1.12 W/kg

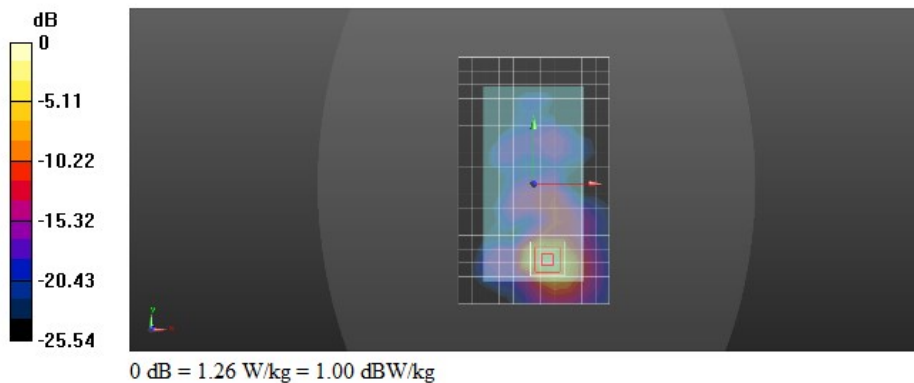
**Configuration/Body/Zoom Scan (7x7x7)/Cube 0:** Measurement grid:  $dx=5$ mm,  $dy=5$ mm,  $dz=5$ mm

Reference Value = 3.433 V/m; Power Drift = 0.16 dB

Peak SAR (extrapolated) = 1.67 W/kg

SAR(1 g) = 0.827 W/kg; SAR(10 g) = 0.373 W/kg

Maximum value of SAR (measured) = 1.26 W/kg



Test Laboratory: CTI SAR Lab

**BW-X07HD WiFi 802.11b 1CH Front Side 5mm****DUT: HANDHELD VITALSIGNS MONITORING SYSTEM; Type: BW-X07HD; Serial: 55e0ba2b**

Communication System: UID 0, WiFi 802.11 a/b/g/n/ac (0); Communication System Band: WiFi; Frequency: 2412 MHz; Duty Cycle: 1:1

Medium parameters used:  $f = 2412$  MHz;  $\sigma = 1.87$  S/m;  $\epsilon_r = 51.563$ ;  $\rho = 1000$  kg/m<sup>3</sup>

Phantom section: Flat Section

DASY Configuration:

- Probe: EX3DV4 - SN7328; ConvF(7.61, 7.61, 7.61); Calibrated: 2/28/2017;
- Sensor-Surface: 2mm (Mechanical Surface Detection),  $z = 1.0, 31.0$
- Electronics: DAE4 Sn1458; Calibrated: 2/22/2017
- Phantom: ELI v6.0; Type: QDOVA003AA; Serial: 2024
- DASY52 52.8.8(1222); SEMCAD X 14.6.10(7331)

**Configuration/Body/Area Scan (11x18x1):** Measurement grid:  $dx=12$ mm,  $dy=12$ mm

Maximum value of SAR (measured) = 0.345 W/kg

**Configuration/Body/Zoom Scan (7x7x7)/Cube 0:** Measurement grid:  $dx=5$ mm,  $dy=5$ mm,  $dz=5$ mm

Reference Value = 0.7870 V/m; Power Drift = 0.13 dB

Peak SAR (extrapolated) = 0.550 W/kg

**SAR(1 g) = 0.270 W/kg; SAR(10 g) = 0.118 W/kg**

Maximum value of SAR (measured) = 0.409 W/kg

