



Wara Home

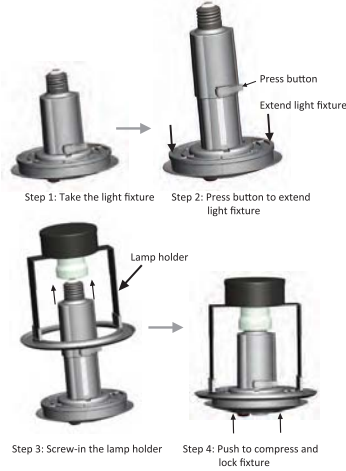
Copyright © 2016 Wuunet Technology Co., Ltd.

All images, text and data contained in this document are copyrighted. No part of this document may be reproduced, distributed, or transmitted in any form or by any means, including photocopying, recording, or other electronic or mechanical methods, without the prior written permission of Wuunet Technology Co., Ltd. (hereinafter referred to as "The Company"). The Company cannot and does not warrant the completeness, accuracy, merchantability, or fitness of the content herein, and the Company shall not be held liable for any damages, direct or indirect, punitive, incidental, special, consequential or other damages arising out of or in any way connected with the use of this document or its content.

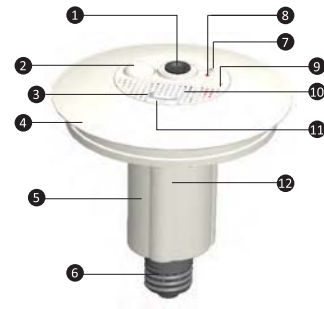
Contact Information

Website: www.wuunet.com
Email: info@wuunet.com
Tel: +886-2-2653-5111
Fax: +886-2-2653-5112

1 Installation Instructions



2 Product Parts



- 1. Camera Lens
- 2. PIR Sensor
- 3. Light Sensor
- 4. LED Lamp
- 5. Retractable Fixture
- 6. E27 Light Bulb
- 7. Reset Pin Hole
- 8. LED Indicator Light
- 9. Microphone
- 10. Speaker
- 11. SD Card Slot
- 12. Light Casing

3 Setup



Use the steps below to make sure the device is working properly when connected to a power source:

1. The LED light will turn on automatically and remain on for 60 seconds.
2. The camera will turn on automatically for 60 seconds.

4 App Download

Search for "Lighting Cam" on Google Play or App Store and download it to your mobile device.



Or scan below QR Code to download the app:



Android

iOS

5 Add a New Device



1. Once installed, go to "Settings" to select the Wi-Fi network **wuucam*******, and input the default password **12345678** to connect.



2. To add the device, open the "Lighting Cam" app and tap "+" icon in the top right corner.



3. Choose to add device by scanning **QRCode** or **Lan Search**.

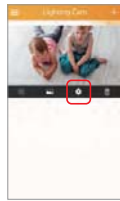
QRCode – scan the barcode on the lighting device with your mobile
Lan Search – select the UID corresponding to the label on the lighting device



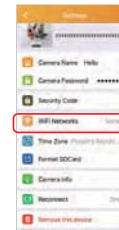
4. After the device is added input the default password **888888**.
When you are finished, tap "✓" to complete configuration.



5. Your device has now been added.



6. Return to the "Lighting Cam" app main screen and select **Settings** icon.



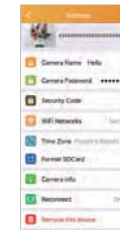
7. Select **Wi-Fi Networks**.



8. Choose your existing Wi-Fi network and enter password to connect your device.

*Note: When the LED indicator light on the device changes from green to blue, this means the device has connected successfully.

6 Settings



1. **Device UID:** A unique identifier (UID) is a numeric or alphanumeric string that is associated with a single device.
2. **Camera Name:** Modify the name of your device.
3. **Camera Password:** The default password is **888888**. If you forget your password, reset the device by restoring to factory settings.
4. **Security Code:** Modify your password (it is recommended that you change your password after setup).
5. **Wi-Fi Networks:** Displays the Wi-Fi network you are connected to.
6. **Format SD Card:** You may format or wipe your memory card.
7. **Camera Info:** Device model, Version, Vendor, Storage and Availability.
8. **Reconnect:** Displays your connection status. If you are experiencing unstable Wi-Fi connection, tap to reconnect.
9. **Remove this device:** This will delete the device from app.

7 Using the App



1. Events 2. Images 3. Settings 4. Remove View



5. Talk Function 6. Record Video 7. Snapshot 8. Lighting 9. PIR Sensor 10. Video Quality

FCC Notice:

Any changes or modifications not expressly approved by the party responsible for compliance could void your authority to operate the equipment.

Note: This equipment has been tested and found to comply with the limits for a Class B digital device, pursuant to part 15 of the FCC Rules. These limits are designed to provide reasonable protection against harmful interference in a residential installation. This equipment generates, uses and can radiate radio frequency energy and, if not installed and used in accordance with the instructions, may cause harmful interference to radio communications. However, there is no guarantee that interference will not occur in a particular installation. If this equipment does cause harmful interference to radio or television reception, which can be determined by turning the equipment off and on, the user is encouraged to try to correct the interference by one or more of the following measures:

- Reorient or relocate the receiving antenna.
- Increase the separation between the equipment and receiver.
- Connect the equipment into an outlet on a circuit different from that to which the receiver is connected.
- Consult the dealer or an experienced radio/TV technician for help.

RF Radiation Exposure Statement:

1. This Transmitter must not be co - located or operating in conjunction with any other antenna or transmitter.
2. This equipment complies with FCC RF radiation exposure limits set forth for an uncontrolled environment. This equipment should be installed and operated with a minimum distance of 20 centimeters between the radiator and your body.