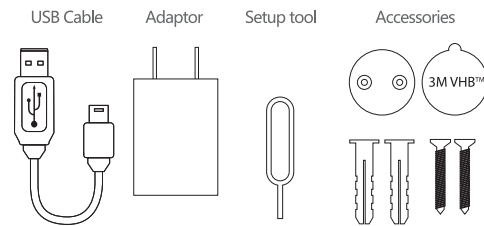


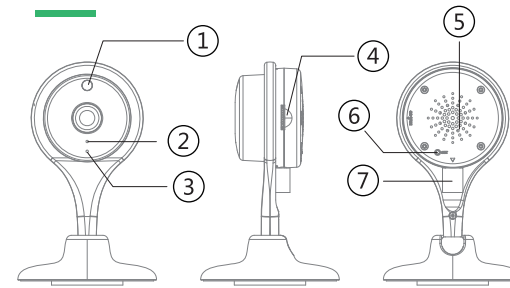
Accessories included



Optional Accessories

1. Bluetooth Earphone (speak clearly even far away)
 2. Smart Home Accessories (monitor temperature and humidity; anti-theft function)
- Buy from our website: www.misafes.com

Image-text Instruction



- | | | |
|-----------------|----------------|-----------|
| ① Beam sensor | ④ SD card slot | ⑤ Speaker |
| ② microphone | ⑥ Reset | |
| ③ LED indicator | ⑦ Power cable | |

How to download APP?

1. Scan below QR code.



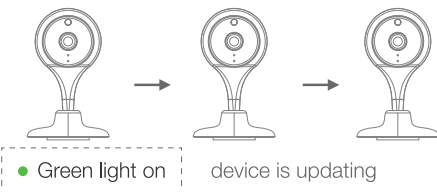
2. Visit website www.misafes.com to download.
3. Search "misafecam" on iOS App store or Android market.

How to add camera?

Firstly, power on camera. The green light flashing means the camera is powered, but waiting to be connected to Wi-Fi.

Secondly, select Wi-Fi, enter Wi-Fi password, and then start to pair. If the blue light is on and no flashing, Wi-Fi is connected and App is ready to be viewed.

- Light off ● Green light flash ● Blue light on



Questions and Answers

Why cannot I add this camera?

Firstly, please check if the camera is powered on; if the Wi-Fi password is correct. Secondly, please reset the camera: insert the needle on "set" key, holding until "ticking" ring to finish the reset. Thirdly, connect the camera to smart devices and Wi-Fi.

Why cannot I view the picture after connected?

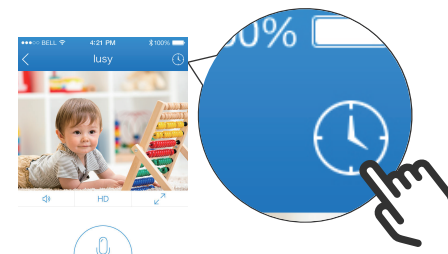
Please check step by step as below:

1. Wi-Fi is disconnected
2. The device is not powered on
3. The device is disconnected with App

Please reset the camera if above steps are not working.

How to view the previous videos?

The video will be recorded in the SD card automatically, when power and networks are on. If storage space is full, the updated videos will cover the earliest data one by one. Then users click the app button to view.



Contact Us

Any questions or business cooperation, please do not hesitate to contact us as below

www.misafes.com

misafes@outlook.com

contact@misafes.com

Twitter: @misafes

This device complies with Part 15 of the FCC Rules: Operation is subject to the following two conditions:

1. This device may not cause harmful interference
2. This device must accept any interference that is received, including any interference that may cause undesired operation.

*RF warning for Portable device: The device has been evaluated to meet general RF exposure requirement. The device can be used in portable exposure condition without restriction.

This device is acting as slave and operating in the 2.4 GHz (2412 ~2462 MHz) band.

Ad Hoc function is supported but not able to operate on non-US frequencies. Do not use the device with the environment which below minimum -10°C or maximum over 50°C

NOTE:

This equipment has been tested and found to comply with the limits for a Class B digital device, pursuant to part 15 of the FCC Rules. These limits are designed to provide reasonable protection against harmful interference in a residential installation. This equipment generates uses and can radiate radio frequency energy and, if not installed and used in accordance with the instructions, may cause harmful interference to radio communications. However, there is no guarantee that interference will not occur in a particular installation. If this equipment does cause harmful interference to radio or television reception, which can be determined by turning the equipment off and on, the user is encouraged to try to correct the interference by one or more of the following measures:

- Reorient or relocate the receiving antenna. - Increase the separation between the equipment and receiver.
- Connect the equipment into an outlet on a circuit different from that to which the receiver is connected.
- Consult the dealer or an experienced radio/TV technician for help

Changes or modifications to this unit expressly approved by the party responsible for compliance
Could void the user's authority to operate the equipment