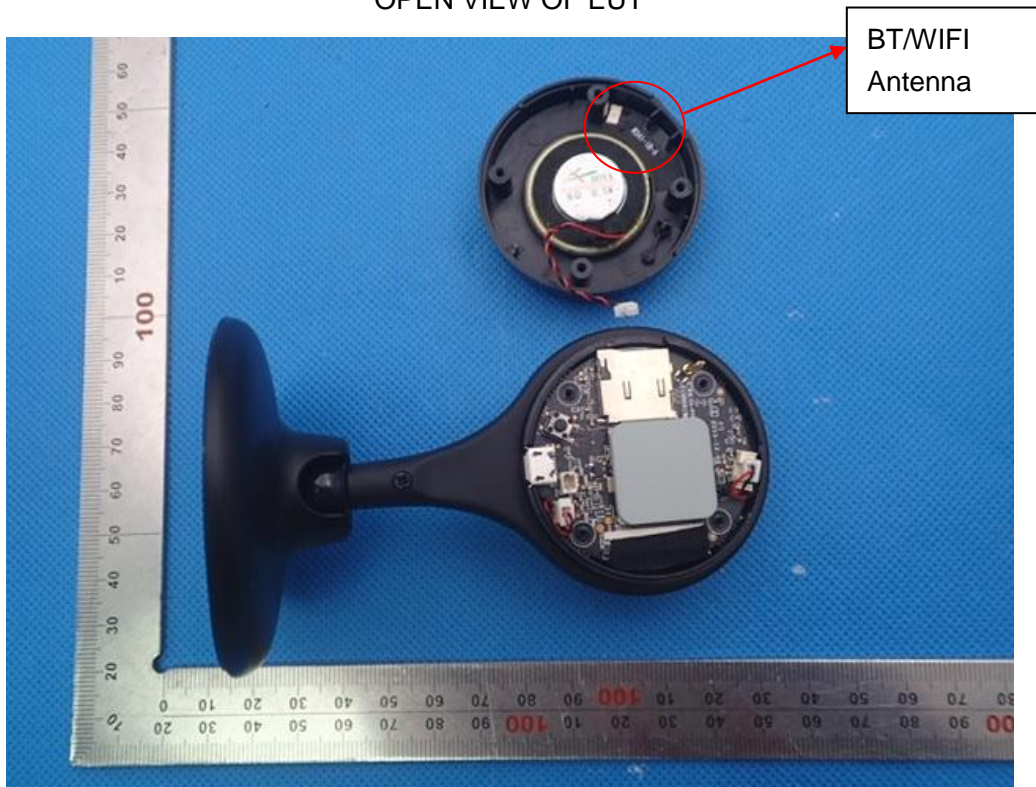
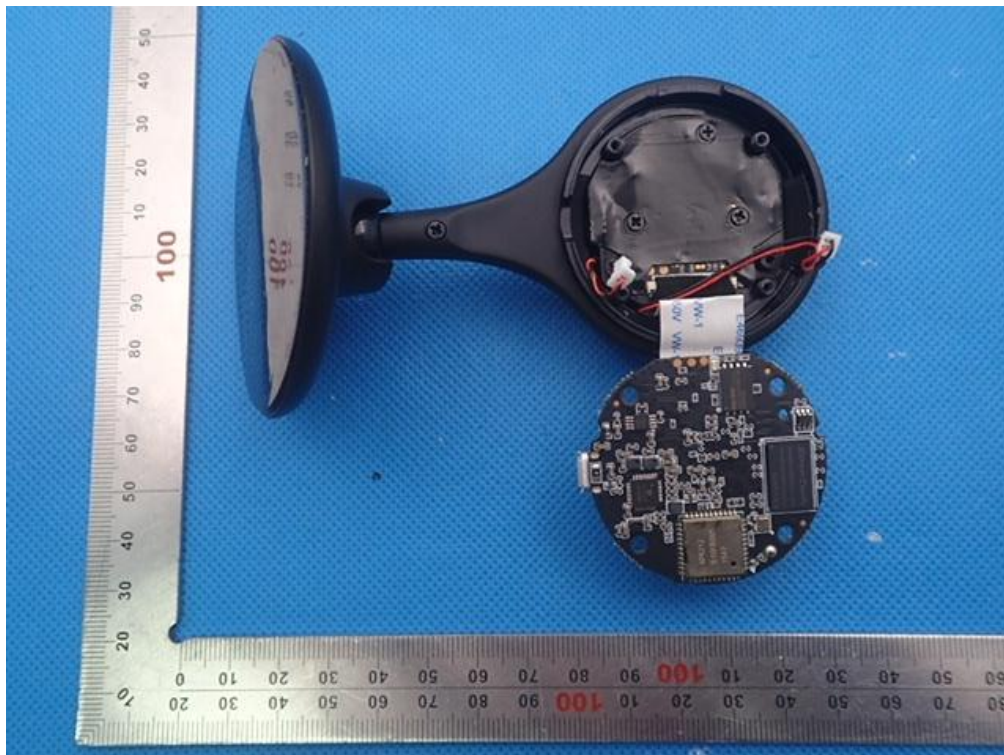


Internal Photos

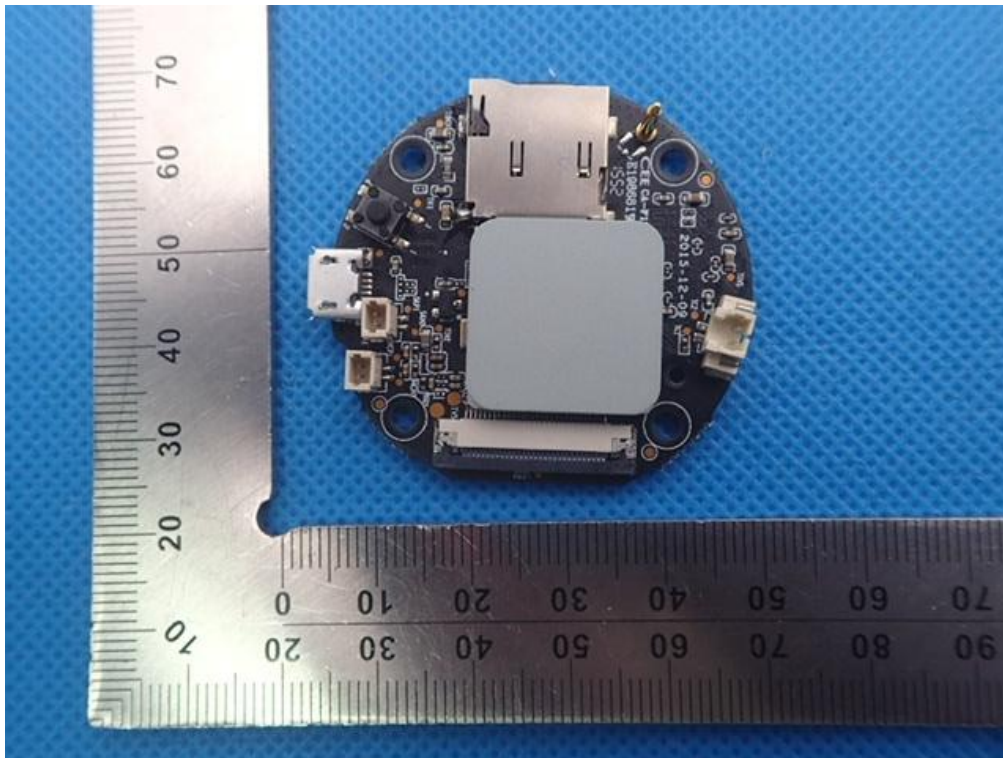
OPEN VIEW OF EUT



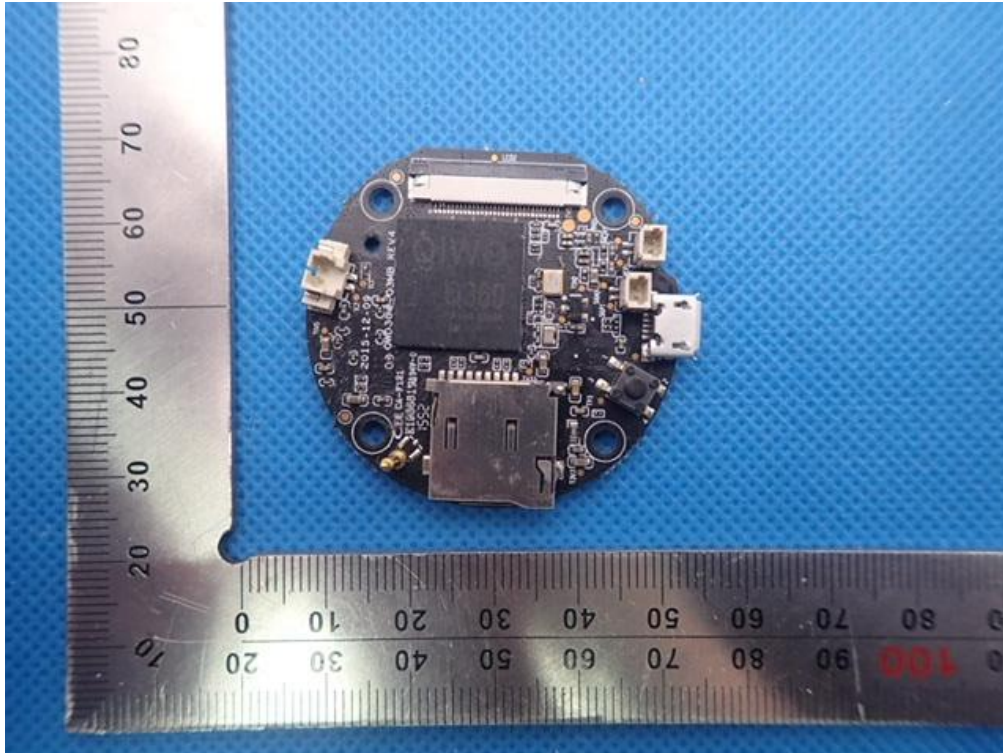
INTERNAL VIEW OF EUT-1



INTERNAL VIEW OF EUT-2



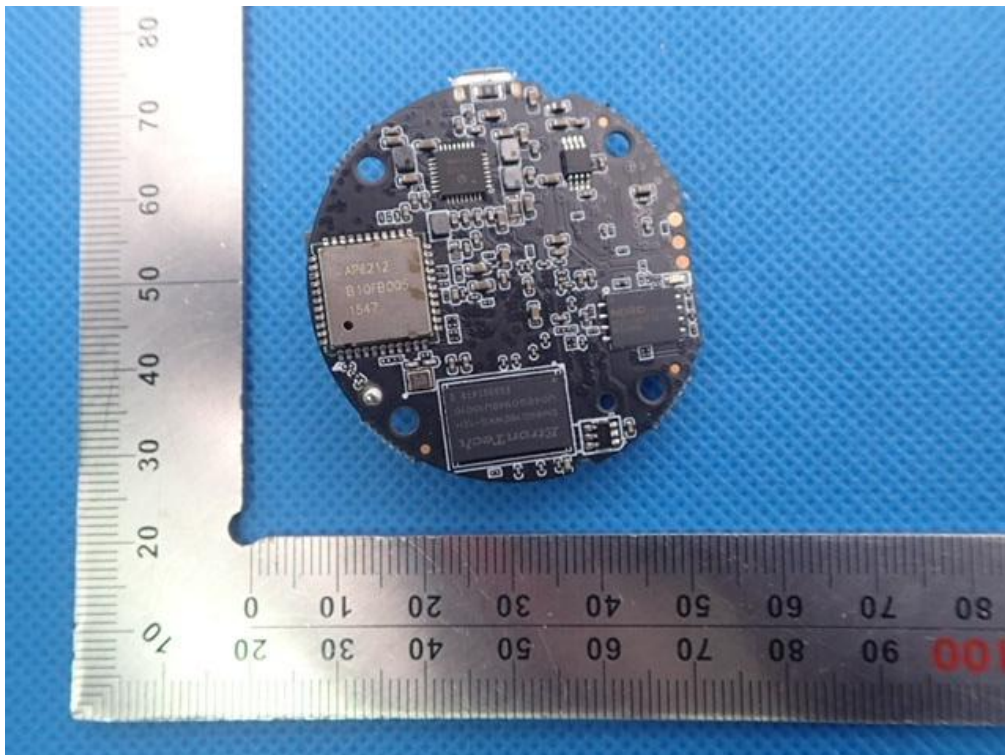
INTERNAL VIEW OF EUT-3



INTERNAL VIEW OF EUT-4



INTERNAL VIEW OF EUT-5



A small, circular, black electronic module is shown on a blue textured surface. The module has a central square chip with a grid of pins. It features several pins around its perimeter, some of which are covered with clear plastic caps. A ruler is placed next to the module for scale, showing it is approximately 20mm in diameter. The ruler has markings in centimeters and millimeters.

