



**ANNEX C SYSTEM PERFORMANCE CHECK DATA**

**System Performance Check Data(Body)**

Type: Phone measurement (Complete)  
 Area scan resolution: dx=8mm,dy=8mm  
 Zoom scan resolution: dx=5mm, dy=5mm, dz=5mm  
 Date of measurement: 2016.08.25  
 Measurement duration: 13 minutes 27 seconds

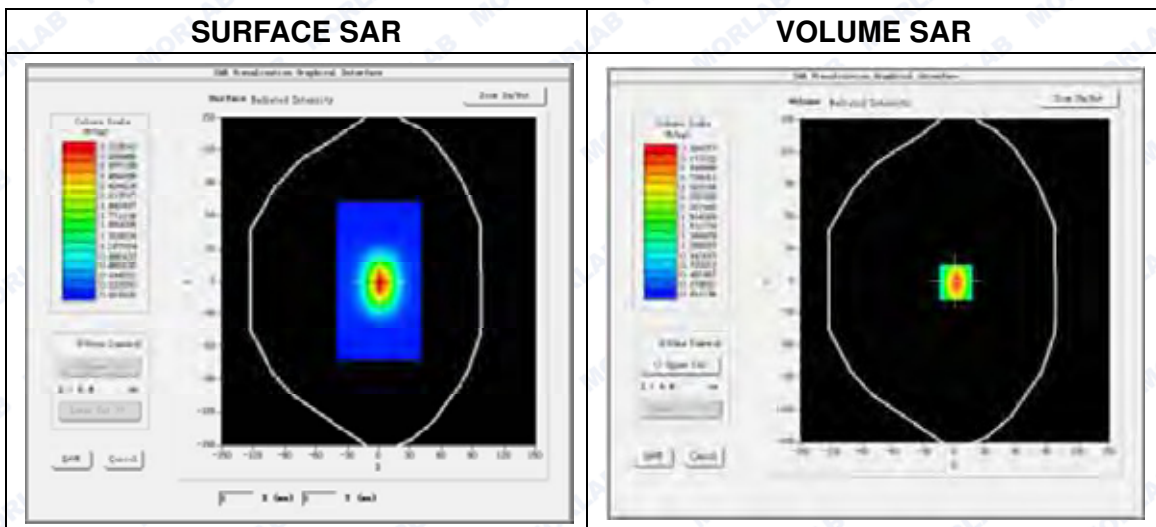
**A. Experimental conditions.**

<b>Phantom File</b>	surf_sam_plan.txt
<b>Phantom</b>	Validation plane
<b>Device Position</b>	
<b>Band</b>	2450MHz
<b>Channels</b>	
<b>Signal</b>	CW

**B. SAR Measurement Results**

Band SAR

<b>Frequency (MHz)</b>	2450.000000
<b>Relative permittivity (real part)</b>	52.480397
<b>Conductivity (S/m)</b>	1.958859
<b>Power Drift (%)</b>	0.630000
<b>Ambient Temperature:</b>	22.9°C
<b>Liquid Temperature:</b>	22.1°C
<b>ConvF:</b>	4.96
<b>Crest factor:</b>	1:1

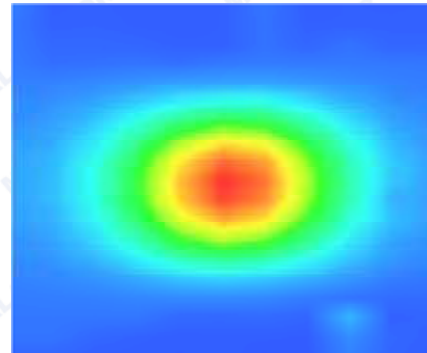
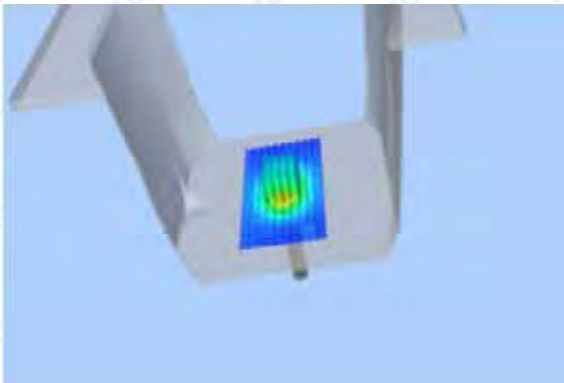
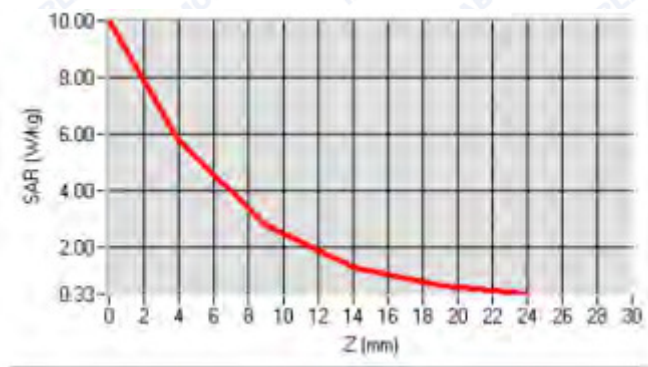




Maximum location: X=7.00, Y=6.00

SAR 10g (W/Kg)	2.642158
SAR 1g (W/Kg)	5.439275

Z Axis Scan





**System Performance Check Data(Body)**

Type: Phone measurement (Complete)

Area scan resolution: dx=8mm,dy=8mm

Zoom scan resolution: dx=4mm, dy=4mm, dz=2mm

Date of measurement: 2016.08.25

Measurement duration: 13 minutes 27 seconds

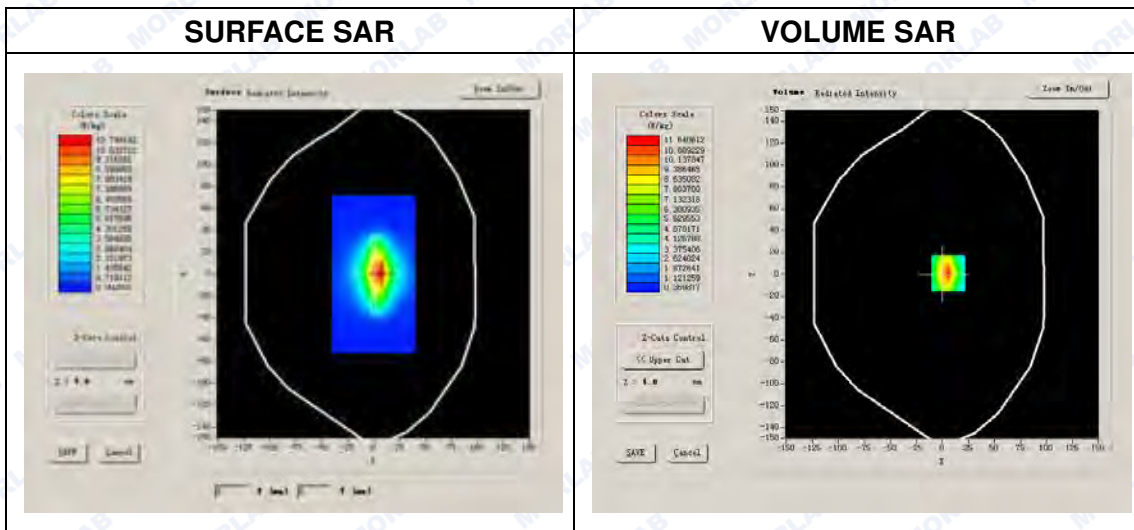
**A. Experimental conditions.**

Phantom File	surf_sam_plan.txt
Phantom	Validation plane
Device Position	
Band	5200MHz
Channels	
Signal	CW

**B. SAR Measurement Results**

**Band SAR**

Frequency (MHz)	5200.000000
Relative permittivity (real part)	48.273014
Conductivity (S/m)	5.743260
Power Drift (%)	2.310000
Ambient Temperature:	22.9°C
Liquid Temperature:	22.1°C
ConvF:	23.71
Crest factor:	1:1

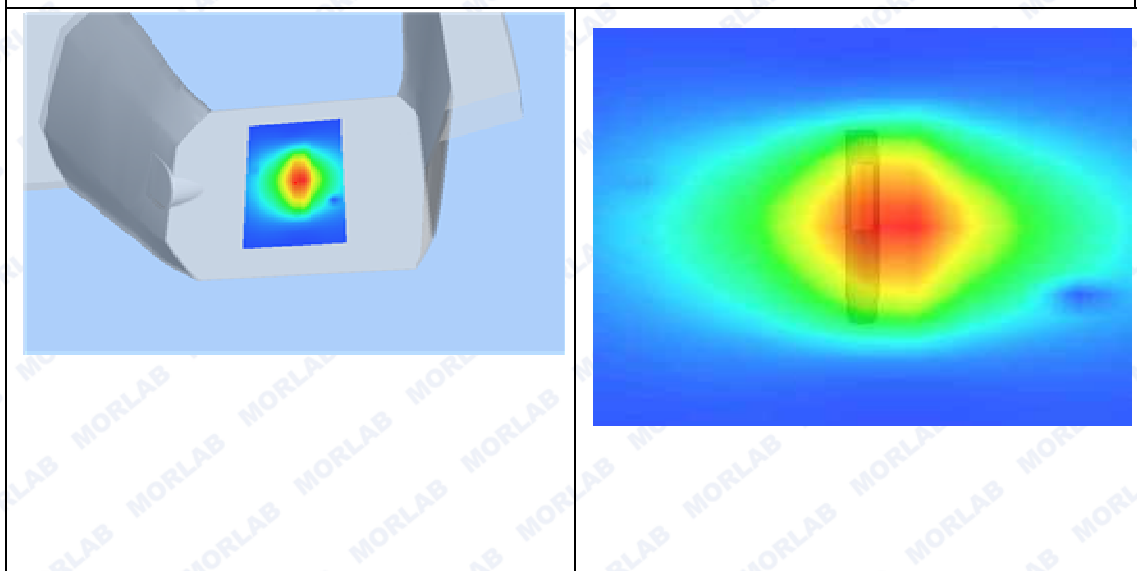
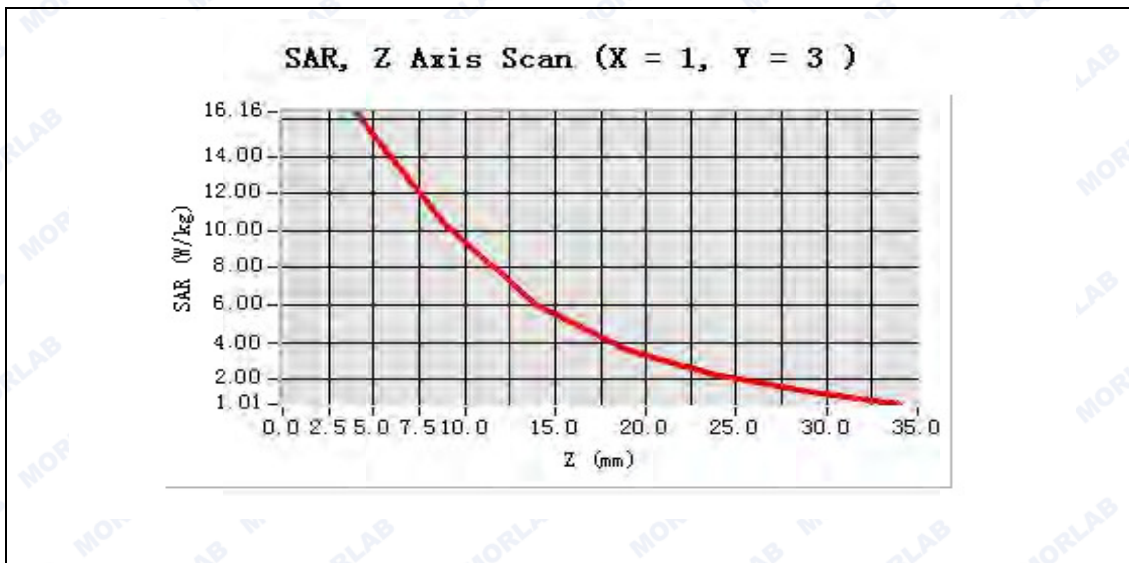




Maximum location: X=1.00, Y=3.00

SAR 10g (W/Kg)	6.024355
SAR 1g (W/Kg)	16.284232

**Z Axis Scan**





**System Performance Check Data(Body)**

Type: Phone measurement (Complete)

Area scan resolution: dx=8mm,dy=8mm

Zoom scan resolution: dx=4mm, dy=4mm, dz=2mm

Date of measurement: 2016.08.25

Measurement duration: 13 minutes 27 seconds

**A. Experimental conditions.**

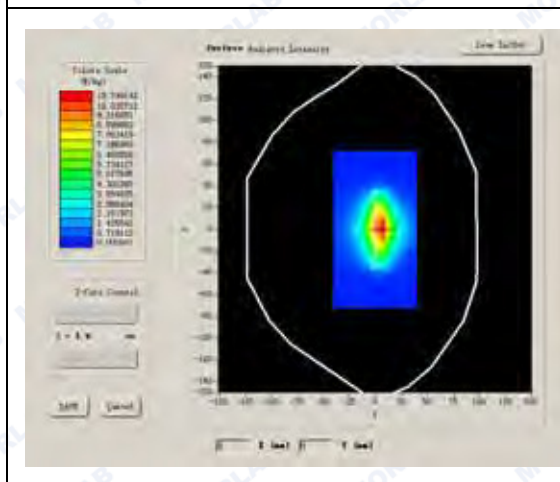
Phantom File	surf_sam_plan.txt
Phantom	Validation plane
Device Position	
Band	5800MHz
Channels	
Signal	CW

**B. SAR Measurement Results**

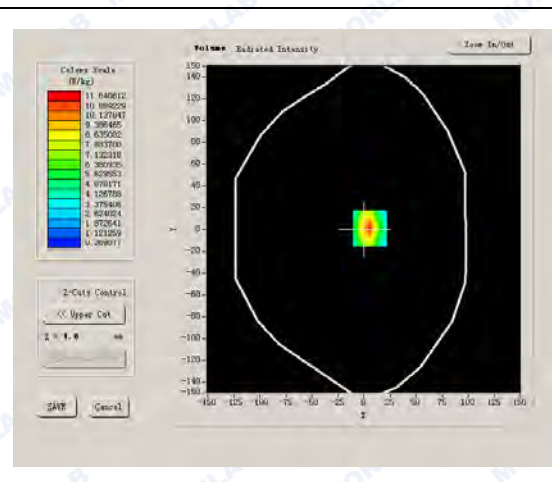
**Band SAR**

Frequency (MHz)	5800.000000
Relative permittivity (real part)	48.093428
Conductivity (S/m)	5.930716
Power Drift (%)	1.260000
Ambient Temperature:	22.9°C
Liquid Temperature:	22.1°C
ConvF:	26.47
Crest factor:	1:1

**SURFACE SAR**



**VOLUME SAR**





Maximum location: X=-6.00, Y=-1.00

SAR 10g (W/Kg)	6.782634
SAR 1g (W/Kg)	21.537290

Z Axis Scan

