

## CARE AND WARNING

**WARNING:** Changes or modifications to this unit not expressly approved by the party responsible for compliance could void the user's authority to operate the equipment.

**NOTE:** 4k60p outputs only in YUV420 color space.

### FCC Radiation Exposure Statement

This device complies with FCC radiation exposure limits set forth for an uncontrolled environment and it also complies with Part 15 of the FCC RF Rules. This equipment must be installed and operated in accordance with provided instructions and the antenna(s) used for this transmitter must be installed to provide a separation distance of at least 20 cm from all persons and must not be co-located or operating in conjunction with any other antenna or transmitter. End-users and installers must be provided with antenna installation instructions and consider removing the no-collocation statement.

**NOTE:** This equipment has been tested and found to comply with the limits for a Class B digital device, pursuant to Part 15 of the FCC Rules. These limits are designed to provide reasonable protection against harmful interference in a residential installation. This equipment generates, uses and can radiate radio frequency energy and, if not installed and used in accordance with the instructions, may cause harmful interference to radio communications.

However, there is no guarantee that interference will not occur in a particular installation. If this equipment does cause harmful interference to radio or television reception, which can be determined by turning the equipment off and on, the user is encouraged to try to correct the interference by one or more of the following measures:

- Reorient or relocate the receiving antenna.
- Increase the separation between the equipment and receiver.
- Connect the equipment into an outlet on a circuit different from that to which the receiver is connected.
- Consult the dealer or an experienced radio / box PC technician for help.

This device complies with Part 15 of the FCC Rules. Operation is subject to the following two conditions:

- (1) this device may not cause harmful interference, and
- (2) this device must accept any interference received, including interference that may cause undesired operation.



Correct Disposal of this product. This marking indicates that this product should not be disposed with other household wastes throughout the EU. To prevent possible harm to the environment or human health from uncontrolled waste disposal, recycle it responsibly to promote the sustainable reuse of material resources. To return your used device, please use the return and collection systems or contact the retailer where the product was purchased. They can take this product for environmental safe recycling.

**Operation Temperature: 0~60°C (32~140°F)**

Adaptor must be used with this equipment to ensure compliance with the Class B FCC limits.

### Power Adaptor information:

Model No.: PSM10R-050  
INPUT: 100~240VAC, 0.25~0.5 A  
OUTPUT: 5V  $\overline{\text{---}}$  2A MAX 10.0W

### RTC Battery Caution

Risk of explosion if battery is replaced by an incorrect type. Disposed of used batteries according to the instructions.



QBP05001UKB01

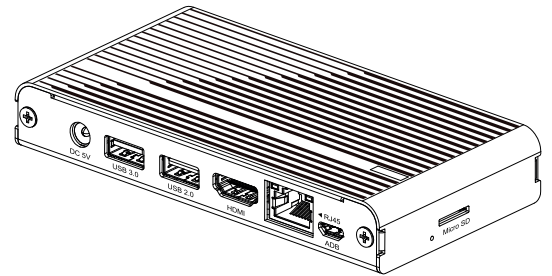


Qbic Technology Co., Ltd.  
www.qbictechnology.com  
Tel: +886-2-2697-2000

# Quick Start Guide

This quick guide will help you go through installation quickly

## Box PC FHD-200



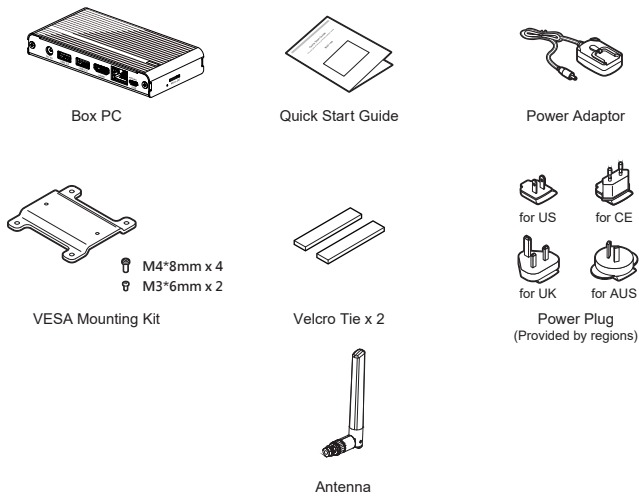
Color and appearance may be subject to changes upon product enhancements or updates without prior notice.

To download QSG in different language, please go to the website:

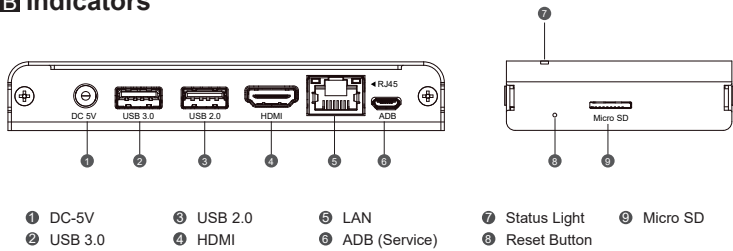
<https://qr.go.page.link/NtCC8>

If you have any problem to access the website, please send your request with the device serial number to [support@qbictechnology.com](mailto:support@qbictechnology.com)

## A Content

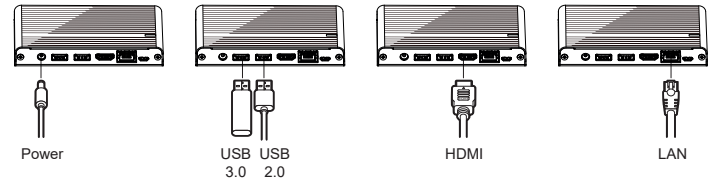


## B Indicators

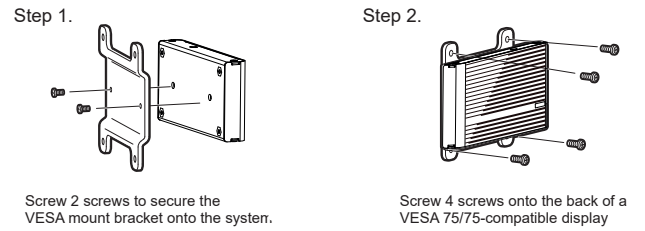


## C Installation

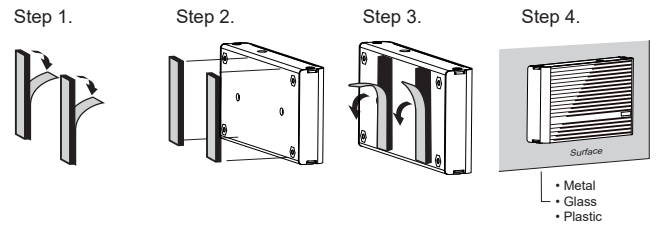
### 1. Cable Connections



### 2. VESA Mount



### 3. Velcro Mount



\* Velcro mount should only be used when device height is less than 2 meters from the ground.  
\* Please ensure the mounting surface is smooth and clean before using the velcro strip.