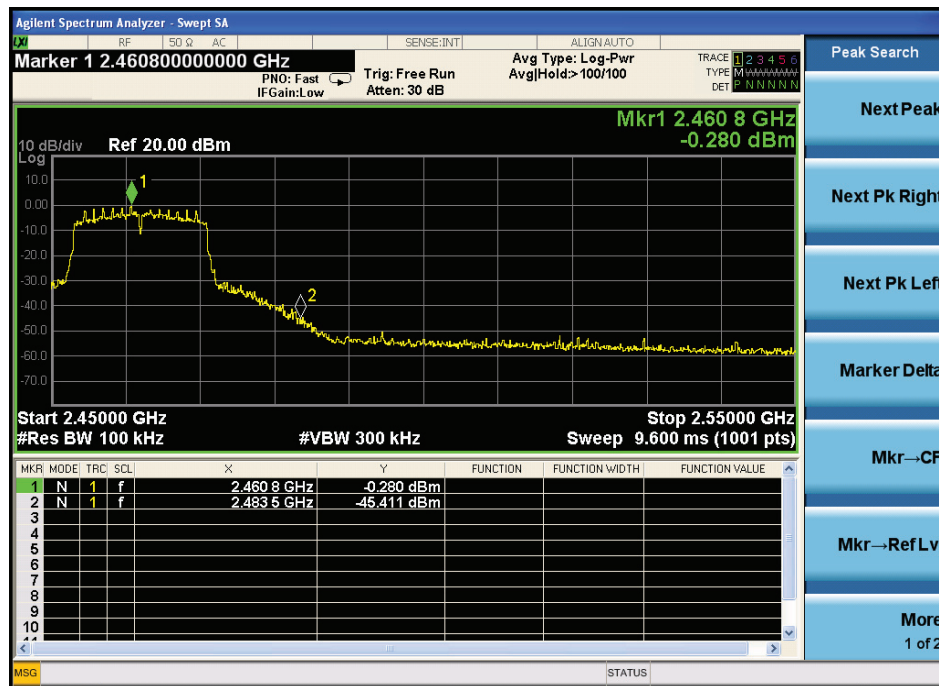
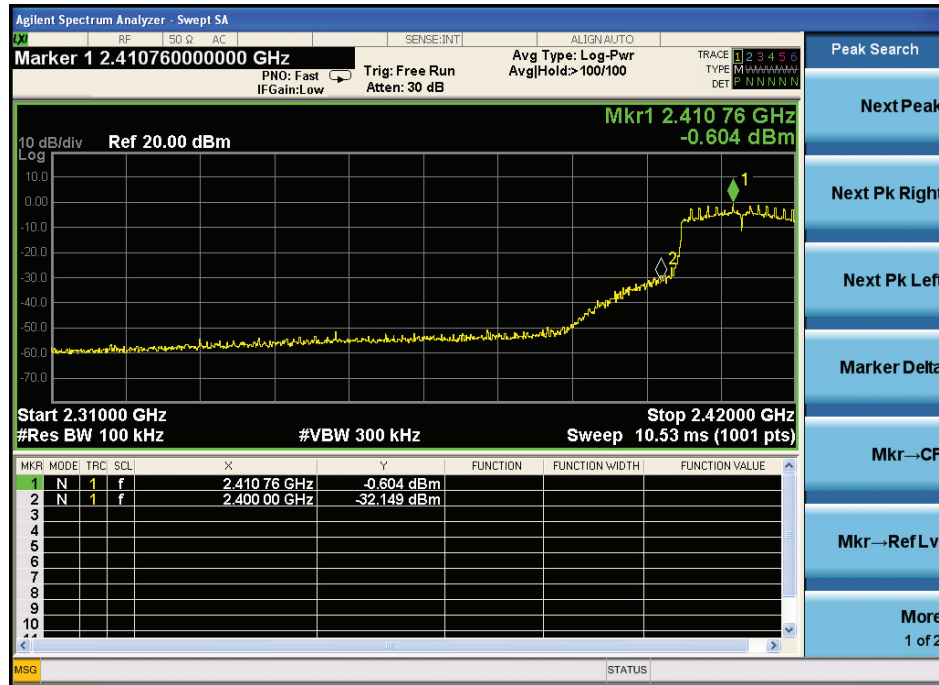
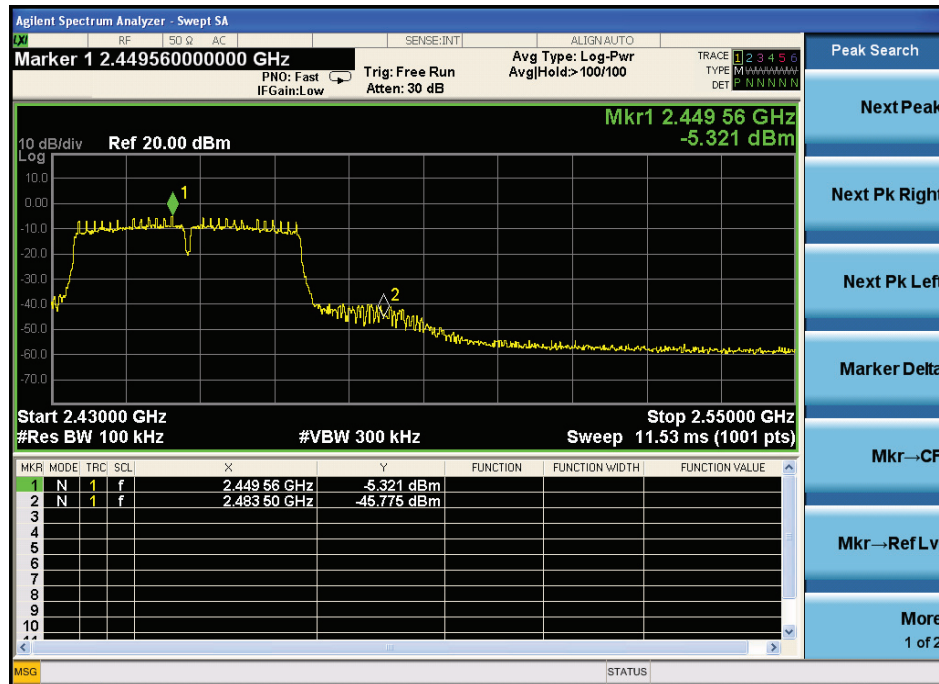
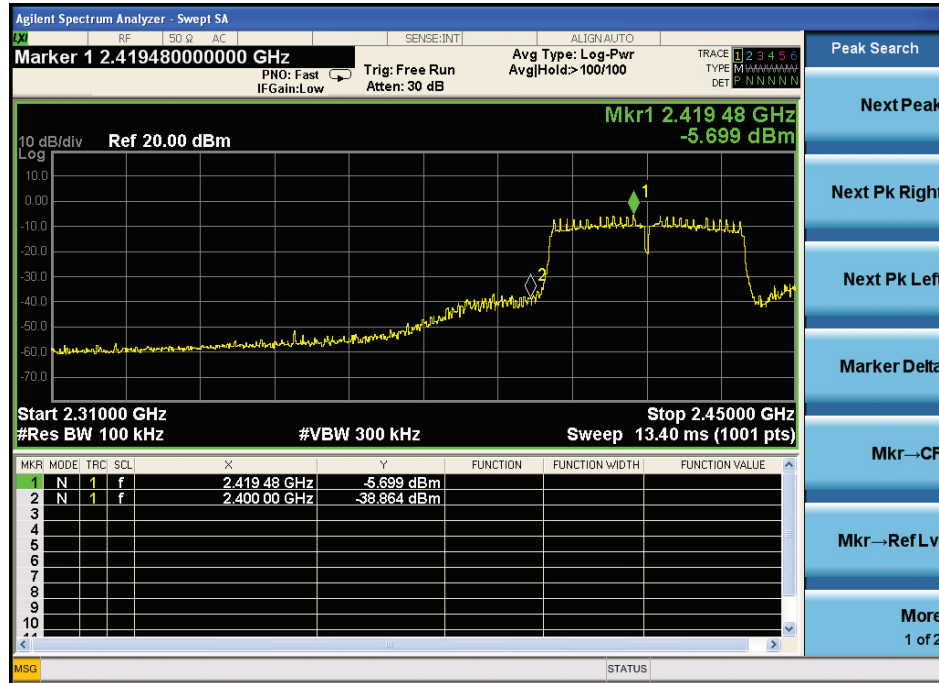


802.11n HT20



Antenna 0 and Antenna 1port all have been tested , only worse case is reported

802.11n HT40



Antenna 0 and Antenna 1port all have been tested , only worse case is reported

11 Antenna Requirement

11.1 Standard Requirement

An intentional radiator shall be designed to ensure that no antenna other than that furnished by the responsible party shall be used with the device. The use of a permanently attached antenna or of an antenna that uses a unique coupling to the intentional radiator shall be considered sufficient to comply with the provisions of this Section. The manufacturer may design the unit so that a broken antenna can be replaced by the user, but the use of a standard antenna jack or electrical connector is prohibited.

11.2 Antenna Connected Construction

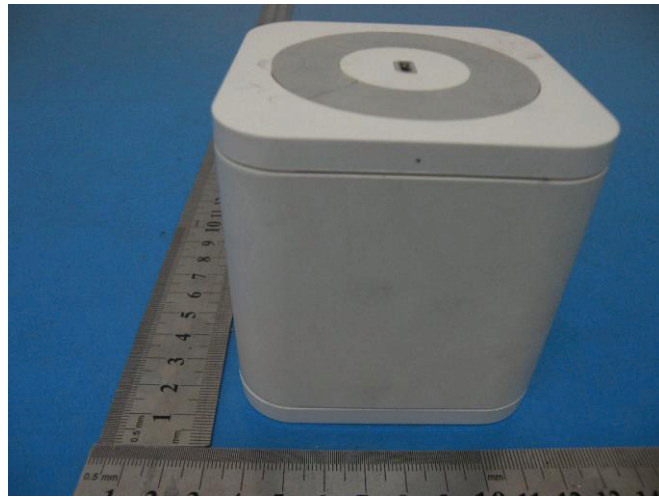
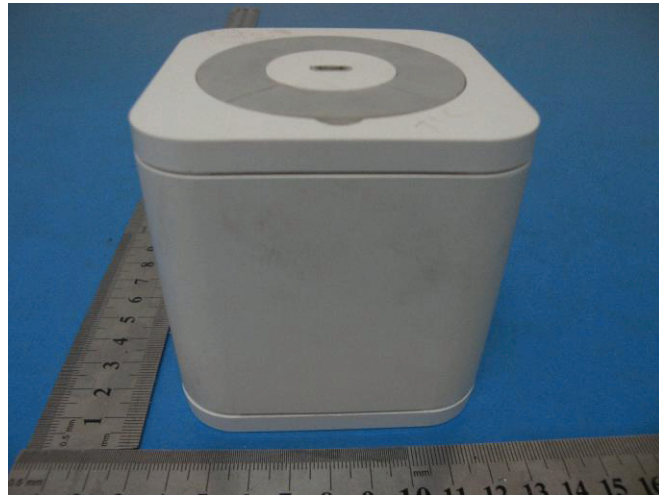
The antenna connector is unique antenna and no consideration of replacement. Please see EUT photo for details.

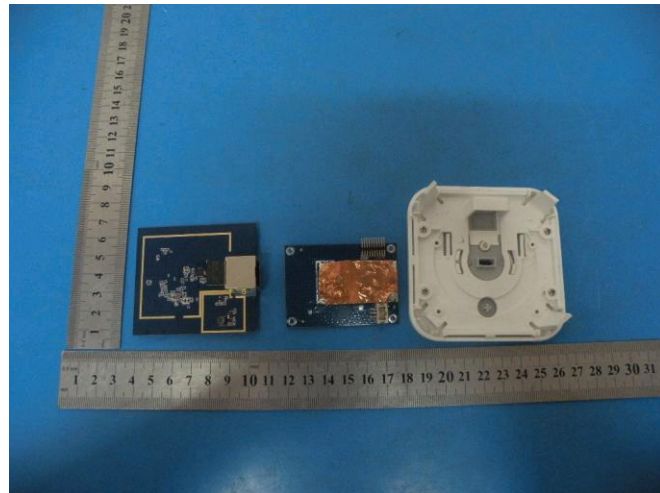
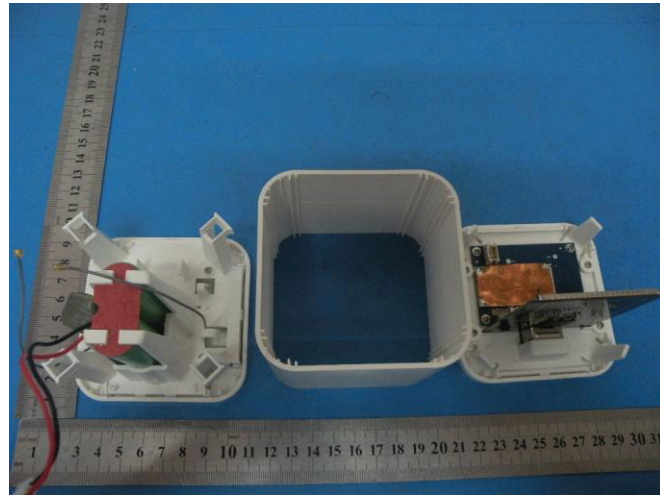
11.3 Result

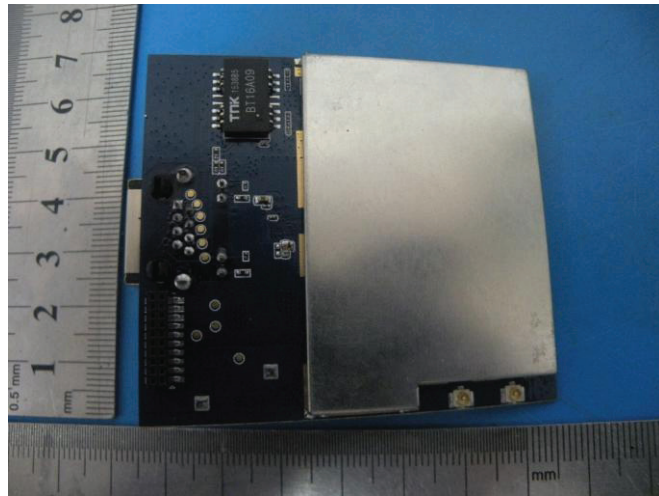
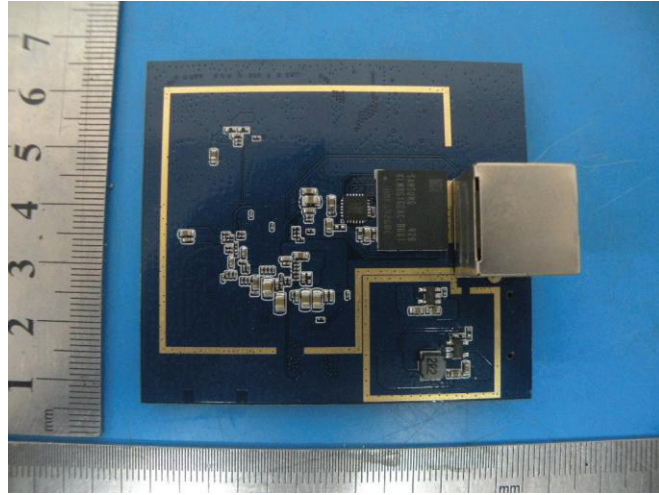
The EUT antenna is integrated Antenna. It comply with the standard requirement.

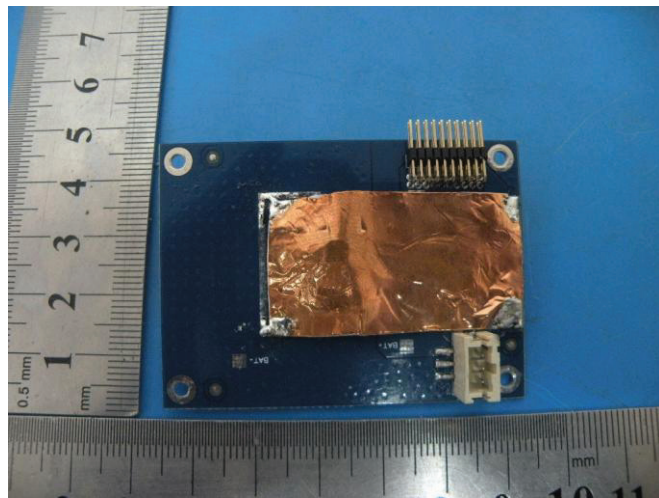
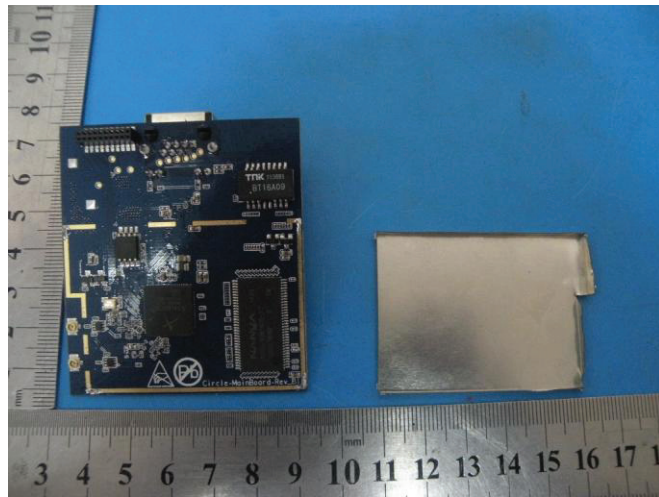
12 Photographs of EUT

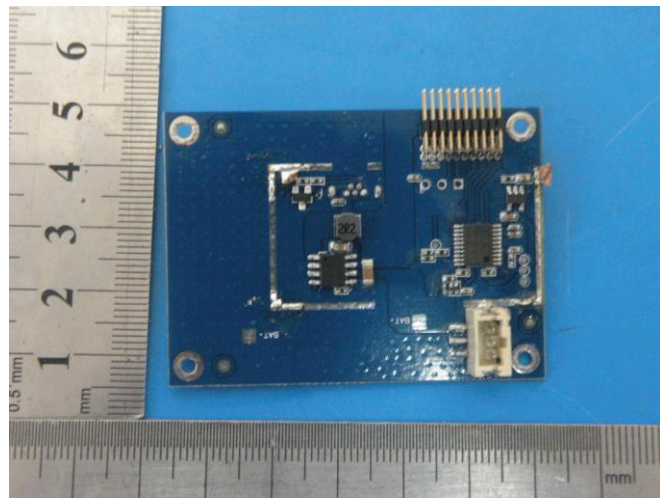
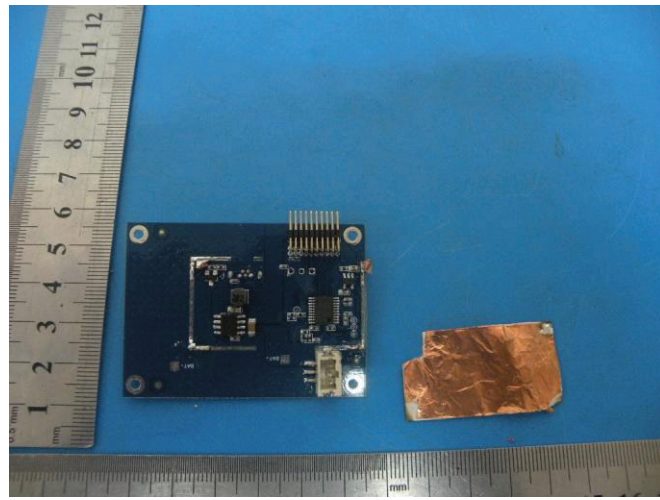


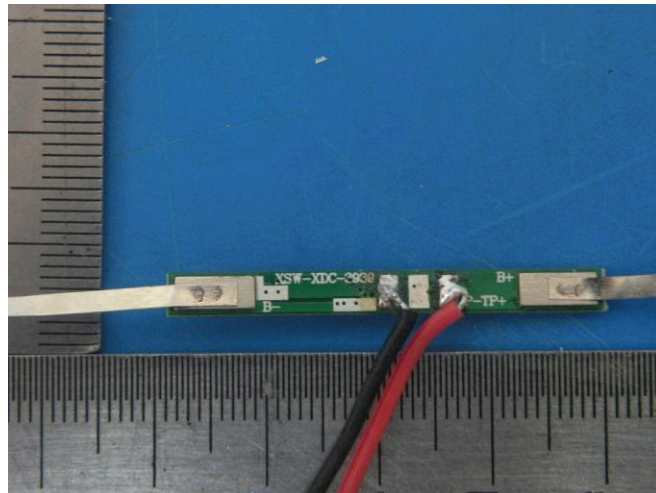
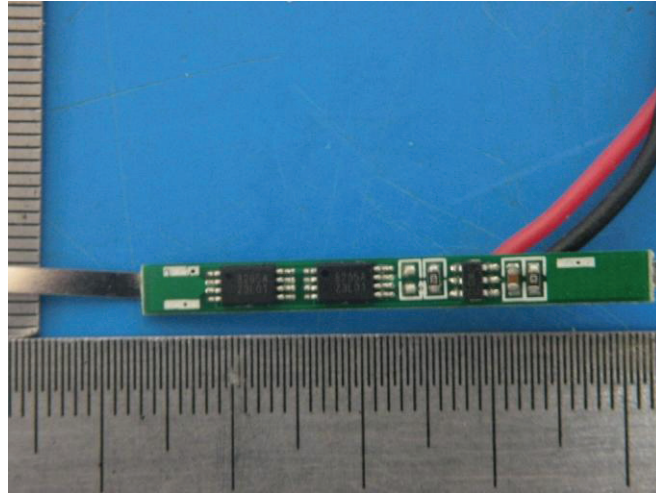












-----END OF THE REPORT-----