

# Field Theory Antenna

## Field Theory

1061 High St  
Mundelein, IL 60060  
Email: info@fieldtheoryinc.com

**FIELDTHEORY**  
CUSTOM ANTENNA DESIGN & RF SOLUTIONS

*Blink Wired Floodlight Camera*

*2.4 GHz Wi-Fi Antenna*

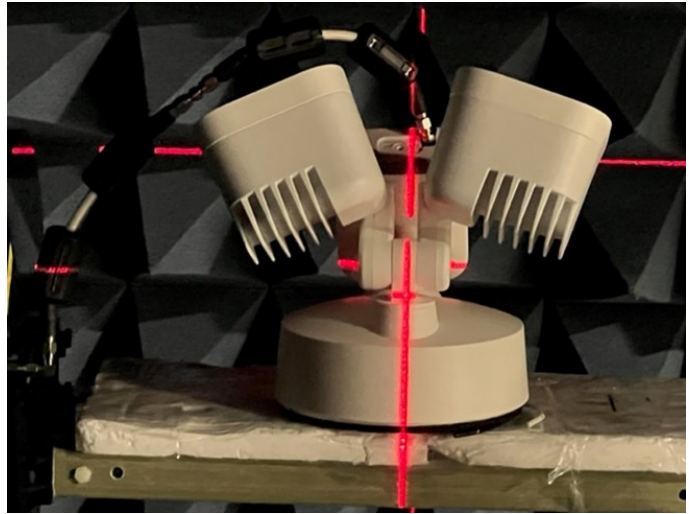
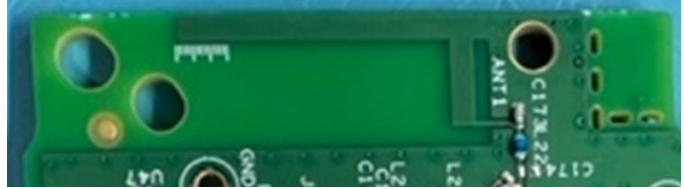
### RADIO SPECIFICATION

Wi-Fi: 2412—2484 MHz

### MECHANICAL

Material Type: Printed FR4

Style: Inverted F



Parameters	Performance (Typical as measured in a Unit)
Frequency (MHz)	2450
Typical Efficiency (%)	73
Typical Peak Gain (dBi)	2.80
Impedance (ohms)	50
VSWR	≤ 1.5
Polarization	Vertical
Maximum Input Power (W)	5

## 2.4GHz Wi-Fi

# Field Theory Antenna

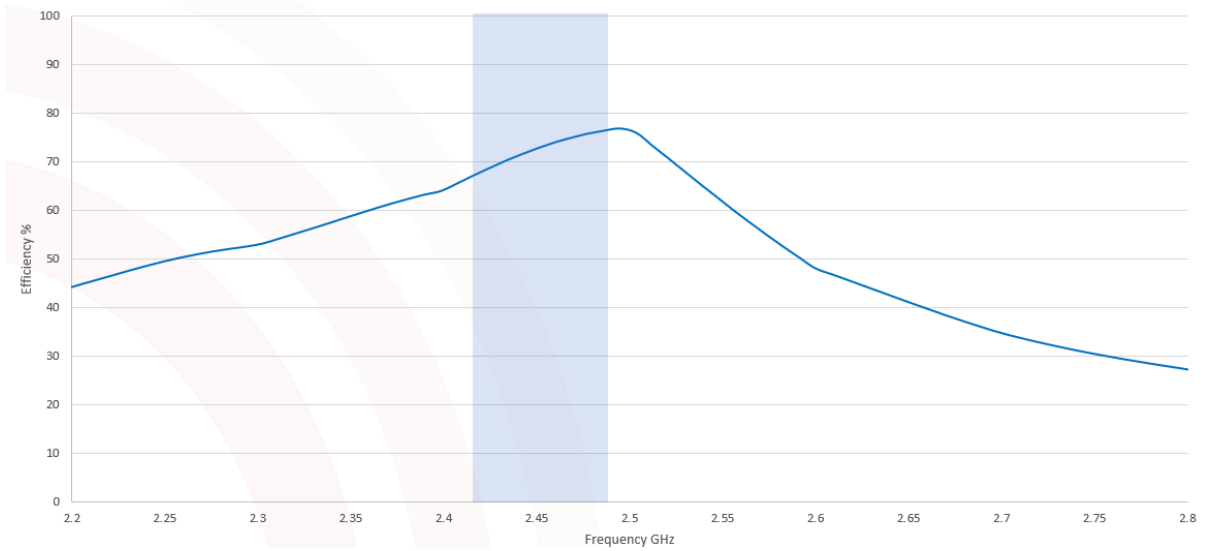
## Field Theory

1061 High St  
Mundelein, IL 60060

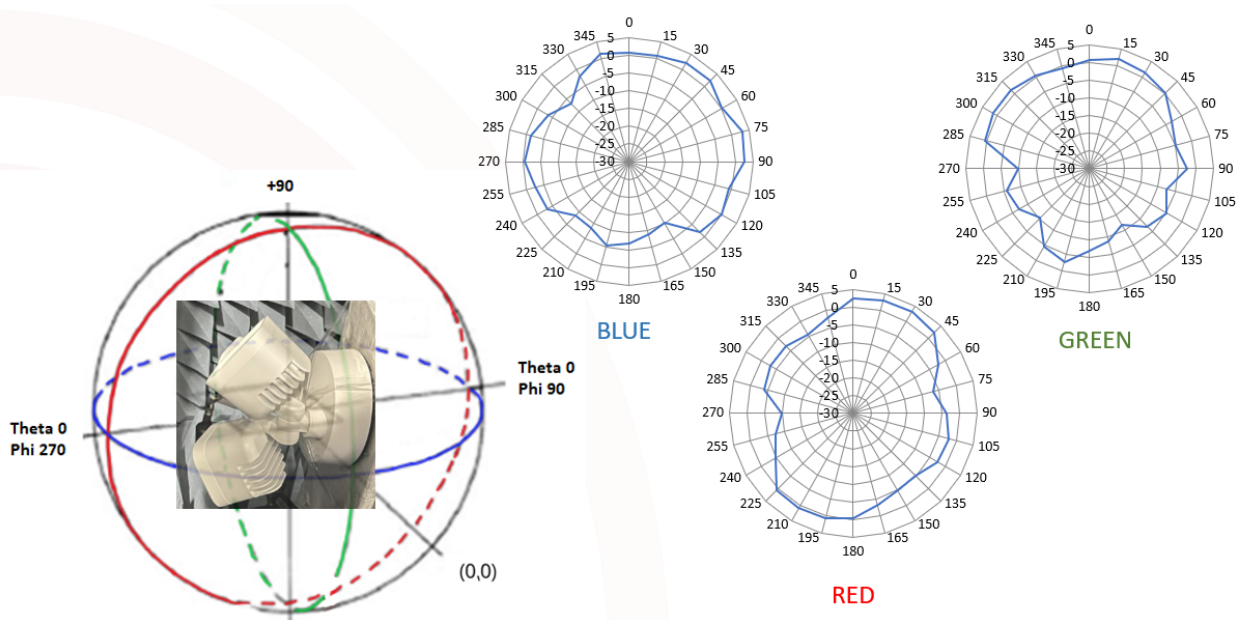
Email: info@fieldtheoryinc.com



### Antenna Performance — Passive Efficiency (Typical as measured in unit)



### 2-D Plots (Typical as measured in unit)



## 2.4GHz Wi-Fi