

Model BSM00500U- Antenna Specification

Immedia Semiconductor LLC
100 Riverpark Drive, Suite 125
North Reading, MA 01864, United States of America

Dual Band Antenna

Summary

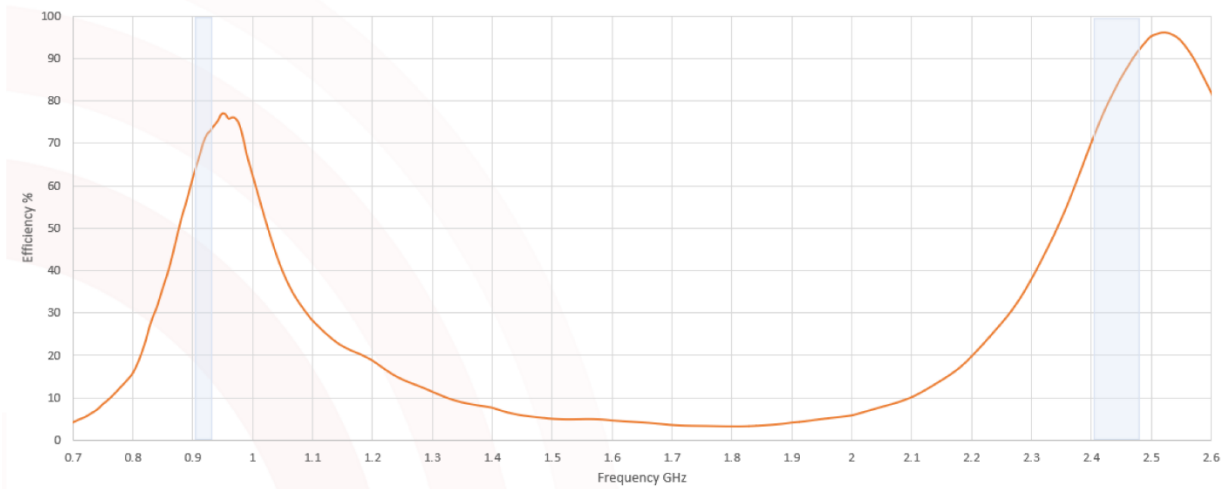
Antenna	Antenna name	Type	Frequency Response
AE2	FTDBWM043	stamped metal	2400 – 2500 MHz 900 – 928 MHz
AE1	FTLRAM044	stamped metal	900 – 928 MHz

Performance

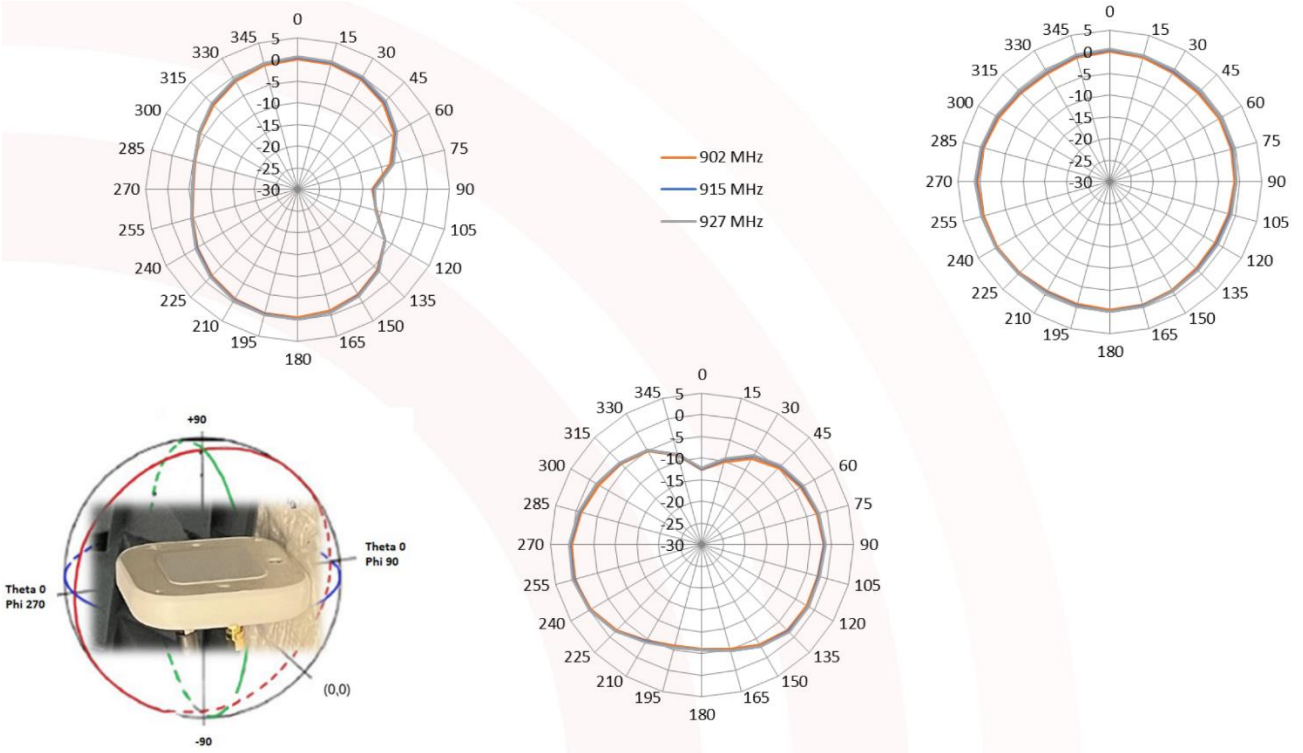
Parameters	Performance								
	AE1			AE2					
Antenna									
Frequency (MHz)	902	915	927	902	915	927	2402	2440	2480
Efficiency (%)	61.5%	67.6%	68%	65%	71%	75%	72%	83%	92%
Peak Gain (dBi)	0.42	0.78	0.77	0.60	0.88	1.58	2.6	3.5	4.2
Impedance (ohms)	50	50	50	50	50	50	50	50	50
VSWR	≤ 1.6	≤ 1.6	≤ 1.6	≤ 2.1	≤ 2.1	≤ 2.1	≤ 2.1	≤ 2.1	≤ 2.1
Polarization	Linear	Linear	Linear	Linear	Linear	Linear	Linear	Linear	Linear
Maximum Input Power (W)	10	10	10	10	10	10	10	10	10

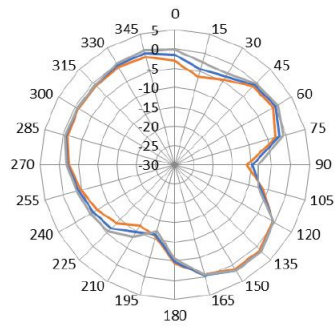
AE2 Antenna

Passive Efficiency

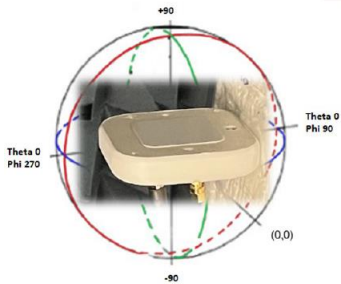
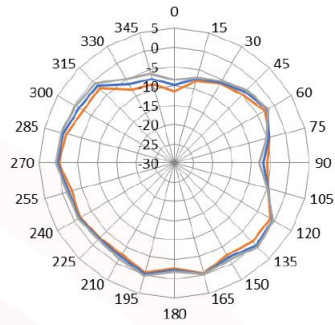
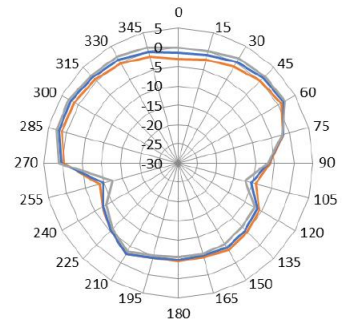


Radiation Patterns



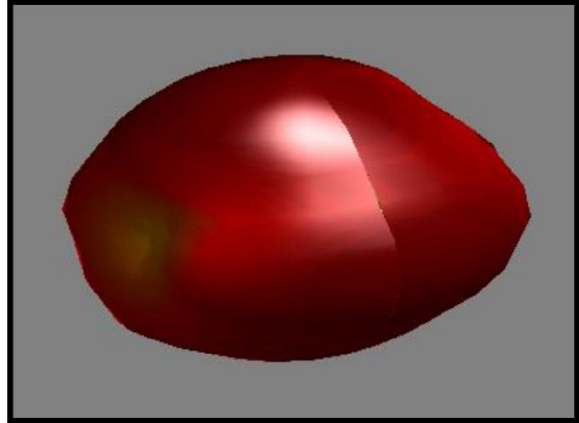
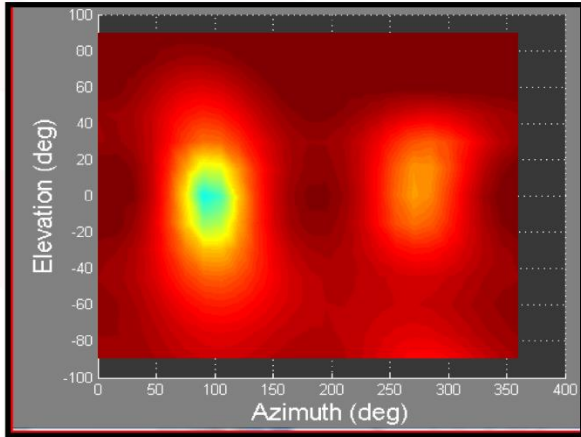


— 2402 MHz
 — 2440 MHz
 — 2480 MHz

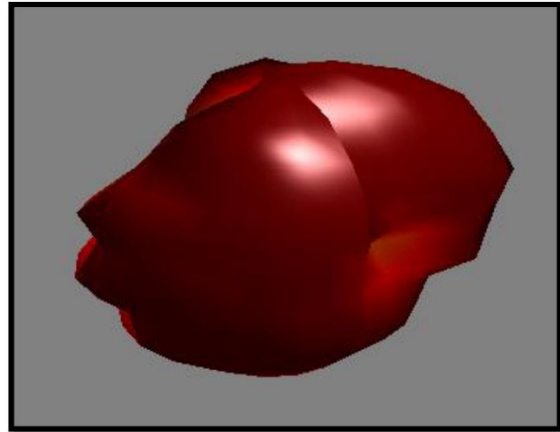
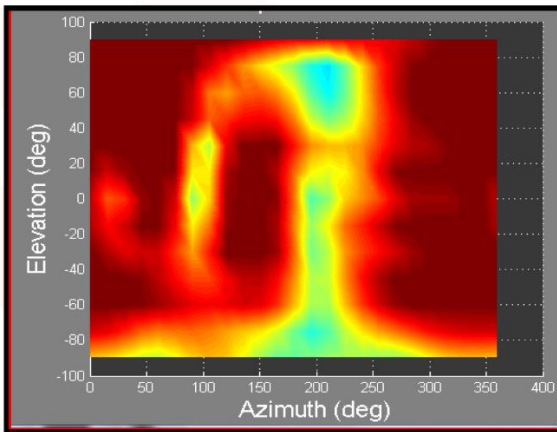


2-D / 3-D Plots

915 MHz

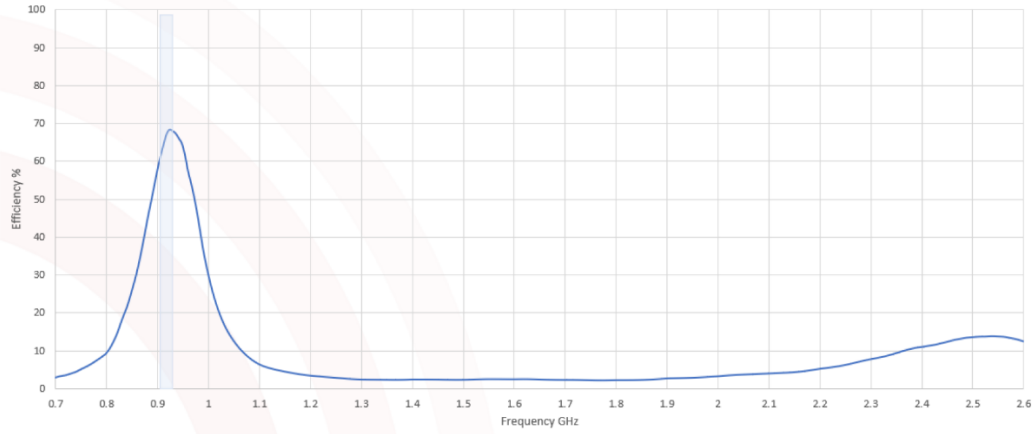


2.44 GHz

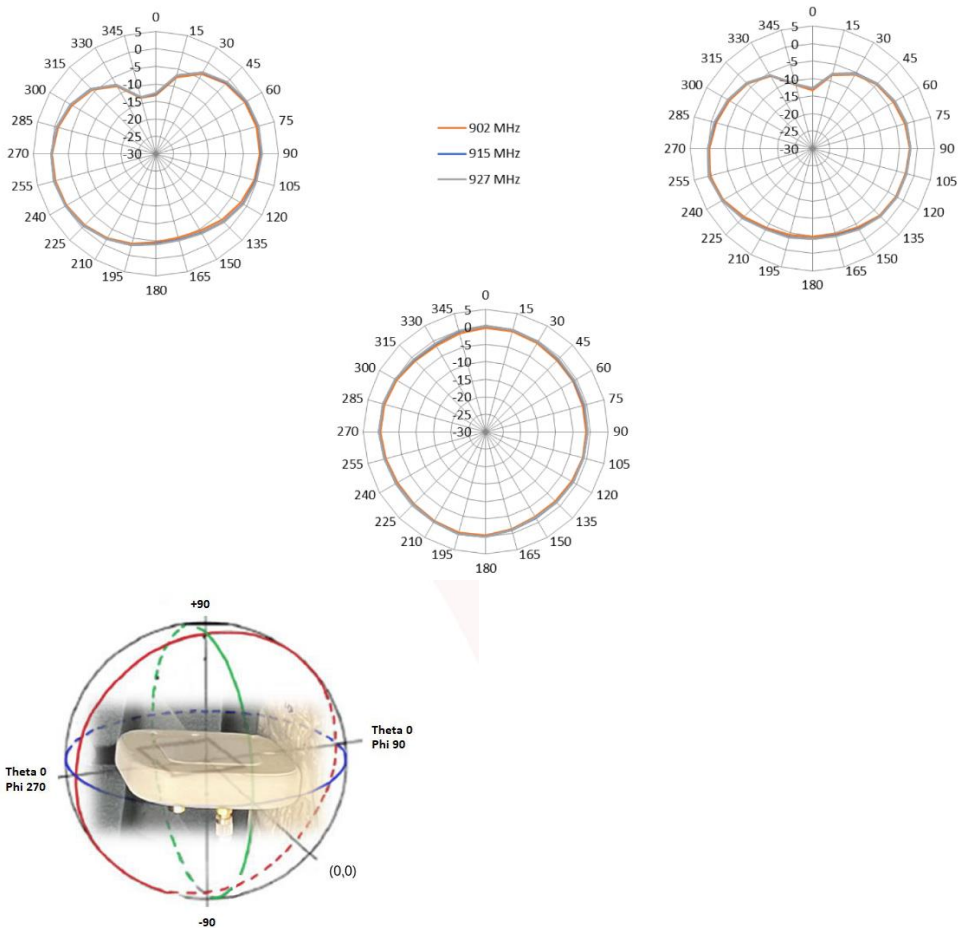


AE1 Antenna

Passive Efficiency



Radiation Patterns



2-D / 3-D Plots

915 MHz

