

**Test Photographs**  
**Spurious Radiated Emissions, 30 MHz to 25 GHz**



EUT Configuration, 80 cm



**Retlif Testing Laboratories**

Report No. R-6412N-3

**Test Photographs**  
**Spurious Radiated Emissions, 30 MHz to 25 GHz**



Horizontal Polarization, 30 to 200 MHz, Biconical Antenna, 80 cm



Vertical Polarization, 30 to 200 MHz, Biconical Antenna, 80 cm



**Retlif Testing Laboratories**

Report No. R-6412N-3

**Test Photographs**  
**Spurious Radiated Emissions, 30 MHz to 25 GHz**



Horizontal Polarization, 200 MHz to 1 GHz, Log Periodic, 80 cm



Vertical Polarization, 200 MHz to 1 GHz, Log Periodic, 80 cm



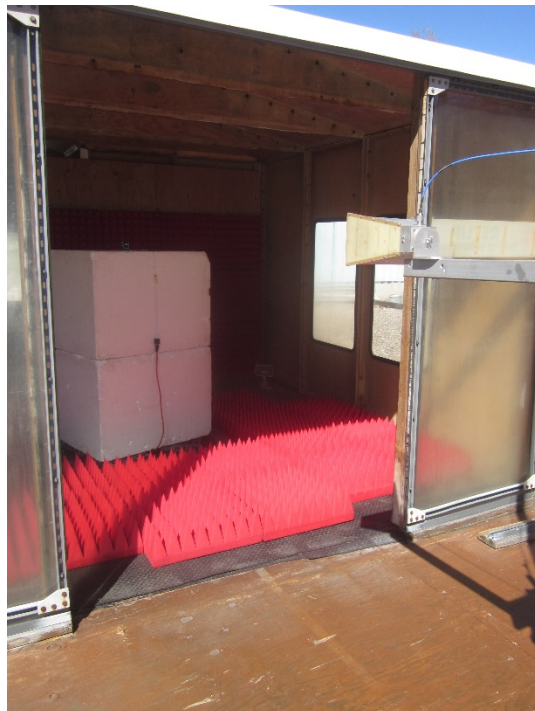
**Retlif Testing Laboratories**

Report No. R-6412N-3

**Test Photographs**  
**Spurious Radiated Emissions, 30 MHz to 25 GHz**



Horizontal Polarization, 1 to 18 GHz, Double Ridge Guide, 150 cm



Vertical Polarization, 1 to 18 GHz, Double Ridge Guide, 150 cm



**Retlif Testing Laboratories**

Report No. R-6412N-3

**Test Photographs**  
**Spurious Radiated Emissions, 30 MHz to 25 GHz**



Horizontal Polarization, 18 to 25 GHz, High Gain Horn, 150 cm



Vertical Polarization, 18 to 25 GHz, High Gain Horn, 150 cm



**Retlif Testing Laboratories**

Report No. R-6412N-3