

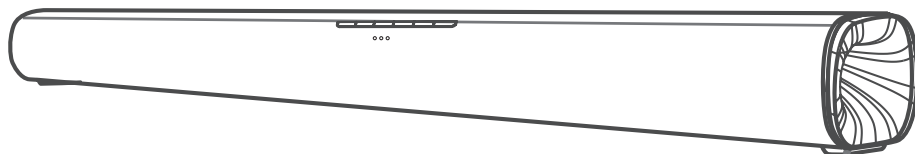
# VISION

installation:innovation

Azlan Logistics Limited

VISION SB-900P Active Soundbar

SB-900P



USER MANUAL

# Contents

---

<b>Important Safety Instructions .....</b>	<b>3</b>
Safety .....	3
Warning.....	4
<b>What's in the Box.....</b>	<b>5</b>
<b>Specifications .....</b>	<b>5</b>
<b>Identifying the Parts .....</b>	<b>6</b>
Main Unit .....	6
<b>Preparations .....</b>	<b>6</b>
Connect to Power.....	7
<b>General Operation .....</b>	<b>8</b>
Standby/ON.....	8
Select Modes.....	8
Adjust the Volume .....	8
Select Equaliser (EQ) Effect.....	8
<b>Play for External Audio Devices.....</b>	<b>8</b>
<b>Bluetooth Operation.....</b>	<b>8</b>
Connect to a Bluetooth Device.....	8
<b>Troubleshooting.....</b>	<b>9</b>

## Important Safety Instructions



The lightning flash with arrowhead symbol, within an equilateral triangle, is intended to alert the user to the presence of uninsulated "dangerous voltage" within the product's enclosure that may be of sufficient magnitude as to constitute a risk of electric shock to persons.



The exclamation point within an equilateral triangle is intended to alert the user to the presence of important operating and maintenance (servicing) instructions in the literature accompanying the appliance.

### Safety

- 1 **Read these instructions** - All the safety and operating instructions should be read before this product is operated.
- 2 **Keep these instructions**-The safety and operating instructions should be retained for future reference.
- 3 **Heed all warnings** - All warnings on the appliance and in the operating instructions should be adhered to.
- 4 **Follow all instructions** - All operating and use instructions should be followed.
- 5 **Do not use this apparatus near water** - The appliance should not be used near water or moisture - for example, in a wet basement or near a swimming pool and the like.
- 6 Clean only with a dry cloth.
- 7 Do not block any ventilation openings. Install in accordance with the manufacturer's instructions.
- 8 Do not install near any heat sources such as radiators, heaters, stoves, or other apparatus (including amplifiers) that produce heat.
9. Do not defeat the safety purpose of the polarized or grounding plug. A polarized plug has two blades with one wider than the other. A grounding plug has two blades and a third grounding prong. The wide blade or the third prong is provided for your safety. If the provided plug does not fit into your outlet, consult an electrician for replacement of the obsolete outlet.
- 10 Protect the power cord from being walked on or pinched particularly at plugs, convenience receptacles, and the point where they exit from the apparatus.




### CAUTION

**RISK OF ELECTRIC SHOCK  
DO NOT OPEN**



CAUTION: TO REDUCE THE RISK OF ELECTRIC SHOCK, DO NOT REMOVE COVER (OR BACK). NO USER-SERVICEABLE PARTS INSIDE. REFER SERVICING TO QUALIFIED SERVICE PERSONNEL.

- 11 Only use attachments/accessories specified by the manufacturer.
- 12  Use only with the cart, stand, tripod, bracket or table specified by the manufacturer, or sold with the apparatus. When a cart or rack is used, use caution when moving the cart/apparatus combination to avoid injury from tip-over.
- 13 Unplug the apparatus during lightning storms or when unused for long periods of time.
- 14 Refer all servicing to qualified personnel. Servicing is required when the apparatus has been damaged in any way, such as power supply cord or plug is damaged, liquid has been spilled or objects have fallen into the apparatus, the unit has been exposed to rain or moisture, does not operate normally, or has been dropped.
- 15  This equipment is a Class II or double insulated electrical appliance. It has been designed in such a way that it does not require a safety connection to electrical earth.
- 16 The apparatus shall not be exposed to dripping or splashing. No objects filled with liquids, such as vases, shall be placed on the apparatus.
- 17 Minimum distance around the apparatus for sufficient ventilation is 5cm.
- 18 The ventilation should not be impeded by covering the ventilation openings with items, such as newspapers, table-cloths, curtains, etc...
- 19 No naked flame sources, such as lighted candles, should be placed on the apparatus.
- 20 Batteries should be recycled or disposed of as per state and local guidelines.
- 21 The use of apparatus in moderate climates.

## Caution:

- Use of controls or adjustments or performance of procedures other than those described herein, may result in hazardous radiation exposure or other unsafe operation.
- To reduce the risk of fire or electric shock, do not expose this apparatus to rain or moisture. The apparatus must not be exposed to dripping or splashing and objects filled with liquids, such as vases, must not be placed on apparatus.
- The mains plug/appliance coupler is used as the disconnect device, the disconnect device must remain readily operable.
- Danger of explosion if battery is incorrectly replaced.
- Replace only with the same or equivalent type.

## Warning

- Before operating this system, check the voltage of this system to see if it is identical to the voltage of your local power supply.
- Do not place this unit close to strong magnetic fields.
- Do not place this unit on the amplifier or receiver.
- Do not place this unit close to damp areas as the moisture will affect the life of the laser head.
- If any solid object or liquid falls into the system, unplug the system and have it checked by qualified personnel before operating it any further.
- Do not attempt to clean the unit with chemical solvents as this may damage the finish. Use a clean, dry or slightly damp cloth.
- When removing the power plug from the wall outlet, always pull directly on the plug, never yank on the cord.
- Changes or modifications to this unit not expressly approved by the party responsible for compliance will void the user's authority to operate the equipment.
- The rating label is pasted on the bottom or back of the equipment.



Correct Disposal of this product. This marking indicates that this product should not be disposed with other household wastes throughout the EU. To prevent possible

harm to the environment or human health from uncontrolled waste disposal, recycle it responsibly to promote the sustainable reuse of material resources. To return your used device, please use the return and collection systems or contact the retailer where the product was purchased. They can take this product for environmental safe recycling.



We hereby declares that this product is in compliance with the essential requirements and other relevant provisions of Directive 2014/53/EU.



The Bluetooth word mark and logos are registered trademarks owned by Bluetooth SIG, Inc.

## FCC INFORMATION

(for US customers)

### Warning:

- This equipment should be installed and operated with minimum distance 20cm between the radiator & your body.
- Changes or modifications to this unit not expressly approved by the party responsible for compliance could void the user's authority to operate the equipment. "

**NOTE:** This equipment has been tested and found to comply with the limits for a Class B digital device, pursuant to Part 15 of the FCC Rules. These limits are designed to provide reasonable protection against harmful interference in a residential installation. This equipment generates, uses and can radiate radio frequency energy and, if not installed and used in accordance with the instructions, may cause harmful interference to radio communications.

However, there is no guarantee that interference will not occur in a particular installation. If this equipment does cause harmful interference to radio or television reception, which can be determined by turning the equipment off and on, the user is encouraged to try to correct the interference by one or more of the following measures:

- Reorient or relocate the receiving antenna.
- Increase the separation between the equipment and receiver.
- Connect the equipment into an outlet on a circuit different from that to which the receiver is connected.
- Consult the dealer or an experienced radio / TV technician for help.

This device complies with Part 15 of the FCC Rules. Operation is subject to the following two conditions:

- (1) this device may not cause harmful interference, and
- (2) this device must accept any interference received, including interference that may cause undesired operation.

## What's in the Box

Main Unit x1  
AC Power Cable x4  
Wall Bracket x2

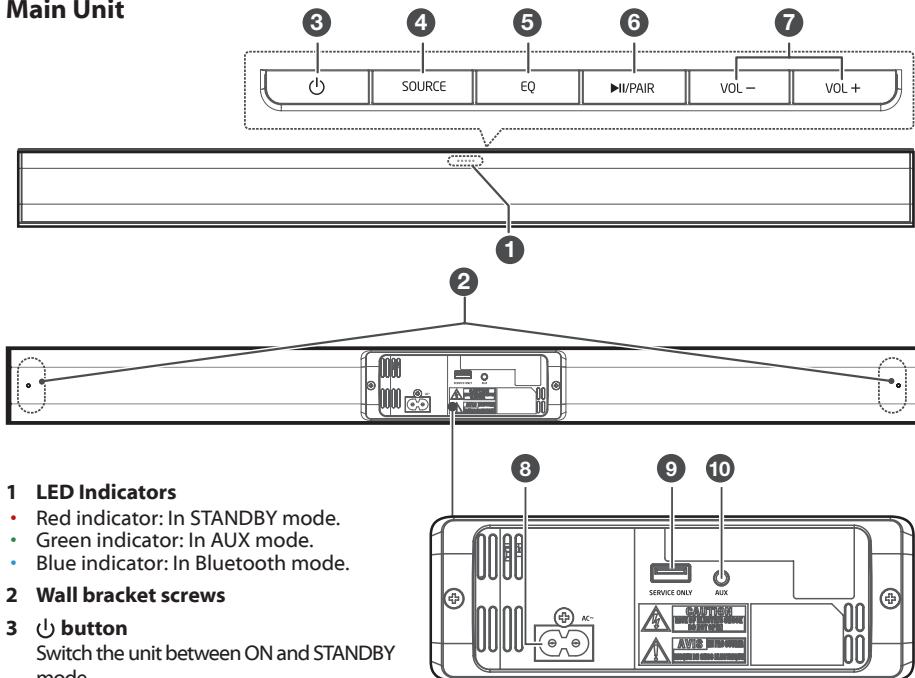
## Specifications

Soundbar	
Power Supply	AC 100-240V~ 50/60H
Output Power	15 W x 2
Power Consumption	30 W < 0.5 W (Standby)
Frequency Response	40Hz - 20KHz
Audio input sensitivity (AUX)	500mV
Speakers Impedance	8Ω x 2
Dimension (W x H x D)	745 x 62 x 92 mm
Bluetooth	
Version	V 4.2
Maximum power transmitted	<5 dbm
Frequency bands	2402 MHz ~ 2480 MHz

- Design and specifications are subject to change without notice.

# Identifying the Parts

## Main Unit



### 1 LED Indicators

- Red indicator: In STANDBY mode.
- Green indicator: In AUX mode.
- Blue indicator: In Bluetooth mode.

### 2 Wall bracket screws

### 3 Power button

Switch the unit between ON and STANDBY mode.

### 4 SOURCE button

Select the play function.

### 5 EQ button

Select Equaliser (EQ) Effect.

### 6 PAUSE/PAIR button

In BT mode, start or pause playback.  
Press and hold to activate the pairing function in Bluetooth mode and disconnect the existing paired Bluetooth device.

### 7 VOL+/VOL- buttons

Increase/decrease the volume level.

### 8 AC~ Socket

Connect power cord.

### 9 SERVICE ONLY Socket

The USB socket is for service only.

### 10 AUX Socket

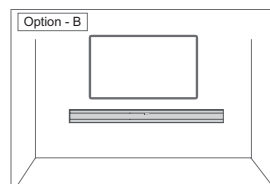
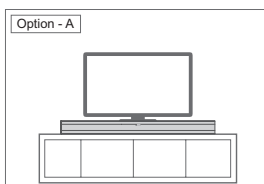
Connect to an external audio device.

# Preparations

## Placement

A You can place the unit on the table directly in front of the TV stand, centered with the TV screen.

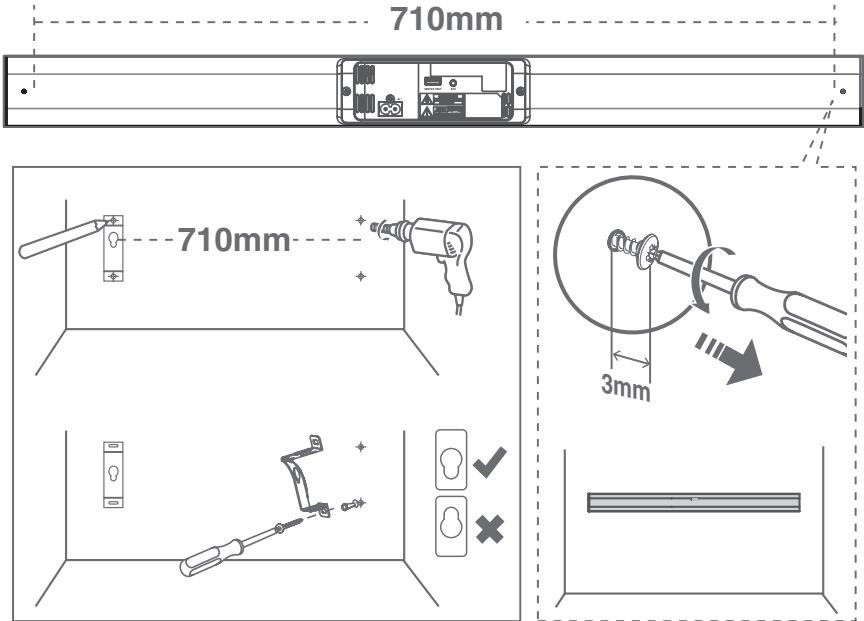
B You can mount the unit on the wall directly below the TV screen.



## Wall Mounting (if using option-B)

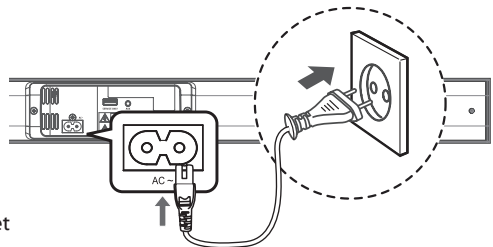
### Note:

- Installation must be carried out by qualified personnel only. Incorrect assembly can result in severe personal injury and property damage (if you intend to install this product yourself, you must check for installations such as electrical wiring and plumbing that may be buried inside the wall). It is the installer's responsibility to verify that the wall will safely support the total load of the unit and wall brackets.
  - Additional tools (not included) are required for the installation.
  - Do not overtighten screws.
  - Keep this instruction manual for future reference.
1. Use an electronic stud finder to check the wall type before drilling and mounting.
  2. Drill 4 parallel holes (Ø 3-8 mm each according to wall type) in the wall. The distance between the holes should be 710 mm.
  3. Firmly fit 1 dowel into each hole in the wall if necessary.
  4. Tighten the wall mount brackets on the wall with screws and screwdriver (not included). Make sure they are securely installed.
  5. Loosen the screws at the back of the unit for 3 mm. Lift the unit onto the wall mount brackets and slot into place.



## Connect to Power

- Before connecting the AC power cord, ensure you have completed all other connections.
- Risk of product damage! Ensure that the power supply voltage corresponds to the voltage printed on the back or the underside of the unit.
- Connect the mains cable to the **AC~ Socket** of the unit and then into a mains socket.



## General Operation

### Standby/ON

When you first connect the main unit to the mains socket, the main unit will be in Standby mode.

- Press the **⏻** button on the unit to switch the unit ON.
- Press the **⏻** button again on the unit to switch the unit back to STANDBY mode. The POWER indicator will light up red.
- Disconnect the mains plug from the mains socket if you want to switch the unit OFF completely.
- If a TV or an external device (Only for **AUX** socket) is connected, the main unit will switch on automatically when the TV or the external device is switched on.
- When the unit no input signal (or weak input signal) in **AUX, Bluetooth** for over 15 minutes, the unit will automatically switch to Standby mode.

### Select Modes

- Press the **SOURCE** button repeatedly on the unit to select the **AUX, BLUETOOTH** mode.
- The indicator light on the front of the main unit will show which mode is currently in use.
  - Red indicator: In STANDBY mode.
  - Green indicator: In AUX mode.
  - Blue indicator: In Bluetooth mode.

### Adjust the Volume

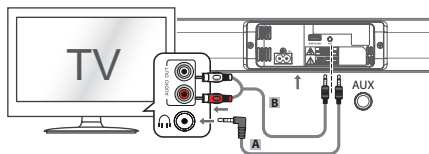
- Press the **VOL+ / VOL-** buttons on the unit to adjust the volume.
- While adjusting the volume, the status indicator flashes quickly.
- While the volume level reaches its maximum level, if you press the **VOL+** button again, the status indicator flashes once. While the volume level reaches its minimum level, if you press the **VOL-** button again, the status indicator flashes once.

### Select Equaliser (EQ) Effect

- While playing, press the **EQ** button on the unit to select preset equalisers: **MOVIE** (recommended for viewing movies), **MUSIC** (recommended for listening to music), **NEWS** (recommended for listening to news)

## Play for External Audio Devices

1. Ensure that the unit is connected to the TV or audio device.



- A.) Use a 3.5mm to 3.5mm audio cable (not included) to connect the TV's or external audio device headphone socket to the **AUX** socket on the unit.
  - B.) Use a RCA to 3.5mm audio cable (not included) to connect the TV's audio output sockets to the **AUX** socket on the unit.
- 1 While in ON mode, press the **SOURCE** button on the unit to select the **AUX** mode.
  - 2 Operate your audio device directly for playback features.
  - 3 Press the **VOL +/-** buttons to adjust the volume to your desired level.

## Bluetooth Operation

### Connect to a Bluetooth Device

The first time you connect your Bluetooth device to this player, you need to pair your device to this player.

#### Note:

- The operational range between this player and a Bluetooth device is approximately 8 meters (without any object between the Bluetooth device and the unit).
- Before you connect a Bluetooth device to this unit, ensure you know the device's capabilities.
- Compatibility with all Bluetooth devices is not guaranteed.
- Any obstacle between this unit and a Bluetooth device can reduce the operational range.
- If the signal strength is weak, your Bluetooth receiver may disconnect, but it will re-enter pairing mode automatically.



- 1 During ON mode, press the **SOURCE** button on the unit to select **Bluetooth** mode. The Blue indicator will flash slowly.
- 2 Activate your Bluetooth device and select the search mode. "**SB-900P**" will appear on your Bluetooth device list.
  - If you cannot find the soundbar, press and hold the ► **II/ PAIR** button on the unit. The system has entered pairing mode. The unit's **Blue** indicator will flash rapidly and prompt "**Pairing**".
- 3 Select "**SB-900P**" enter "0000" for the password if necessary. The unit will voice "**Paired**" and the Blue indicator will light up solidly.
- 4 You can now play music from your connected device.
  - Press the ► **II/ PAIR** button on the unit to pause/resume play.

#### **To disconnect the Bluetooth function:**

- Switch to another function on the unit.
- Disable the function from your Bluetooth device. The Bluetooth device will be disconnected from the unit after the "**Disconnected**" voice prompt.
- Press and hold the ► **II/ PAIR** button on the unit.

#### **Tips:**

- Enter "0000" for the password if necessary.
- If no other Bluetooth device pairs with this player within two minutes, the player will recover its previous connection.
- The player will also be disconnected when your device is moved beyond the operational range.
- If you want to reconnect your device to this player, place it within the operational range.
- If the device is moved beyond the operational range, when it is brought back, please check if the device is still connected to the player.
- If the connection is lost, follow the instructions above to pair your device to the player again.

## **Troubleshooting**

---

To keep the warranty valid, never try to repair the system yourself. If you encounter problems when using this unit, check the following points before requesting service.

### **No power**

- Ensure that the AC cord of the apparatus is properly connected .
- Ensure that there is power at the AC outlet.
- Press standby button to turn the unit on.

### **No sound**

- Increase the volume. Press Volume Up on the soundbar.
- Press source buttons to select a different input source.
- If using Bluetooth, ensure that the volume on your source device is turned up and that the device is not muted.

### **I can't find the Bluetooth name of this unit on my Bluetooth device for Bluetooth pairing**

- Ensure the Bluetooth function is activated on your Bluetooth device.
- Ensure you have paired the unit with your Bluetooth device.

### **This is a 15 mins power off function, one of the ERPII standard requirement for saving power**

- When the unit's external input signal level is too low, the unit will be turned off automatically in 15 minutes. Please increase the volume level of your external device.

# IC Caution

- English:

This device complies with Industry Canada licence-exempt RSS standard(s). Operation is subject to the following two conditions: (1) This device may not cause interference, and (2) This device must accept any interference, including interference that may cause undesired operation of the device.

This equipment complies with Canada radiation exposure limits set forth for an uncontrolled environment. This equipment should be installed and operated with minimum distance 20cm between the radiator & your body.

- French:

Le présent appareil est conforme aux CNR d'Industrie Canada applicables aux appareils radio exempts de licence.

L'exploitation est autorisée aux deux conditions suivantes:

(1) l'appareil ne doit pas produire de brouillage, et

(2) l'utilisateur de l'appareil doit accepter tout brouillage radioélectrique subi, même si le brouillage est susceptible d'en compromettre le fonctionnement.

Cet équipement est conforme Canada limites d'exposition aux radiations dans un environnement non contrôlé. Cet équipement doit être installé et utilisé à distance minimum de 20cm entre le radiateur et votre corps.