



MOPAR.

PN: 12345678901

SC: 12345

SN: 12345

MD: 12345 12345678

FCC ID: 2AF5R-52192780

Flex Automotive

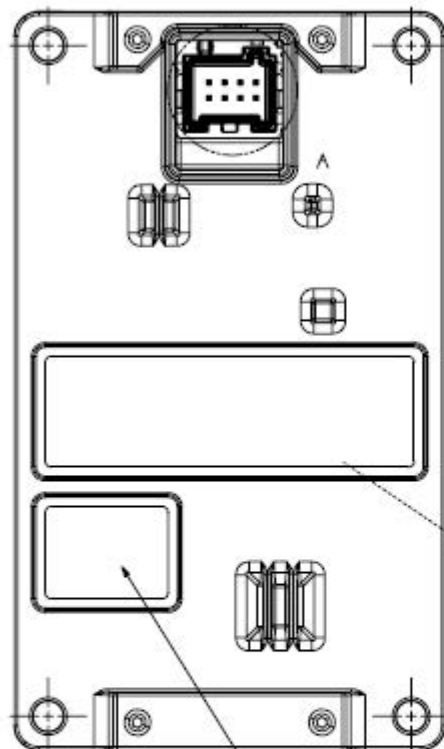
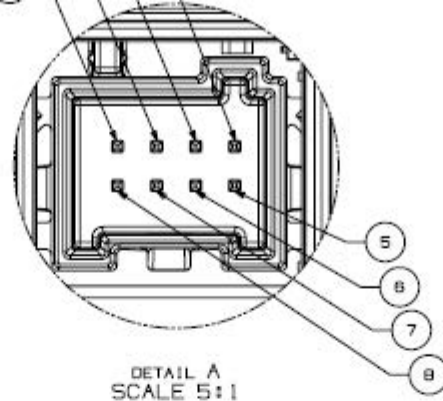
MADE IN BRAZIL



Pending

flex

TLA, FCA, WDC, BRAZIL, MAIN MODULE PINOUT	
PIN	FUNCTION/PIN NAME
1	BATTERY
2	LIN
3	NO CONNECT
4	NO CONNECT
5	LED R
6	LED G
7	LED B
8	GND



NOTES:

SCALE ON SHEET 2 IS 2:1

ANATEL LABEL
ANATEL ID



2D MATRIX

MOPAR
SYMBOL

Q1
SYMBOL

FLEX
SYMBOL



WCP Main Module Label

Dimensions: 18 x 60 mm

FCA PN: 00052192780

Supplier Code: 43235

S/N: 5 digits

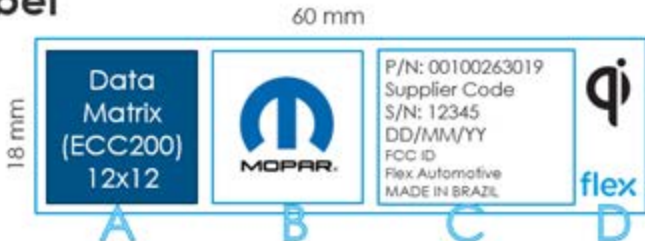
Manufacturing Date: DDMMYY

FCC ID: 2AF5R-52192780

Data Matrix with: PN, SupCode, SN
and Manuf.Date

All data is print in black

OBS.: For Main Module need put a
separate label for Anatel Certification



A. Data Matrix:

1. FCA PN + SupCode + SN + Date

B. Mopar Logo: as informed CS-11000, section 5.3.1

1. If prefer, we can change to use only MOPAR and FCA logo, as informed section 5.3.2 and 5.3.5

C. Trace code

1. FCA PN + SupCode + SN + Date + FCC ID + Flex Automotive + Manufacturing Location

D. Qi Logo + Flex Logo

flex