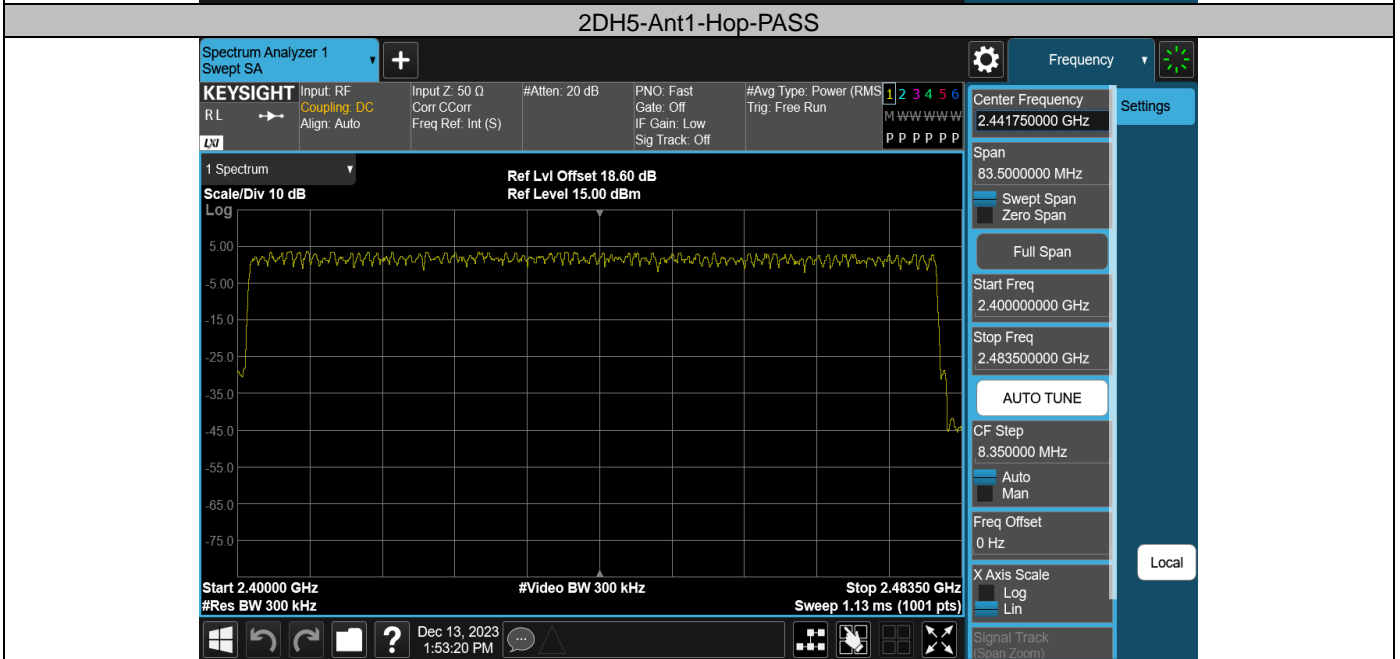
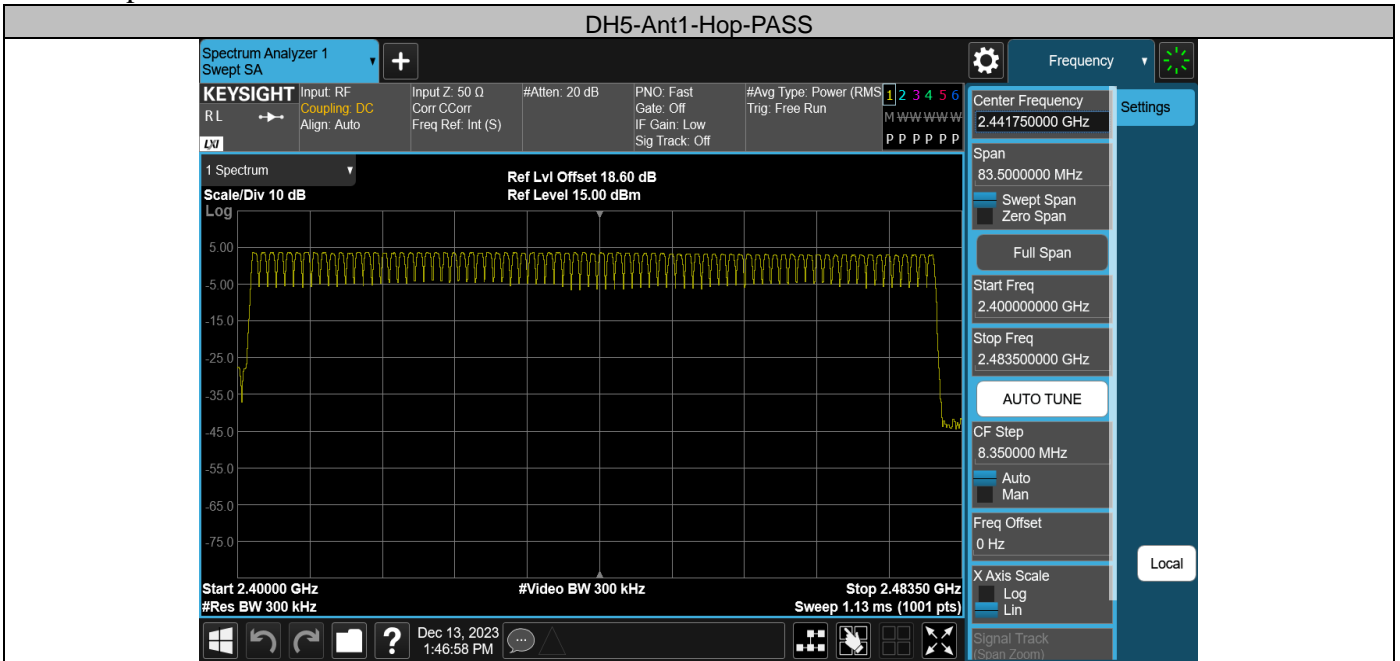


Appendix E: Number of hopping channels
 Test Result

TestMode	Antenna	Frequency[MHz]	Result[Num]	Limit[Num]	Verdict
DH5	Ant1	Hop	79	≥15	PASS
2DH5	Ant1	Hop	79	≥15	PASS

Test Graphs

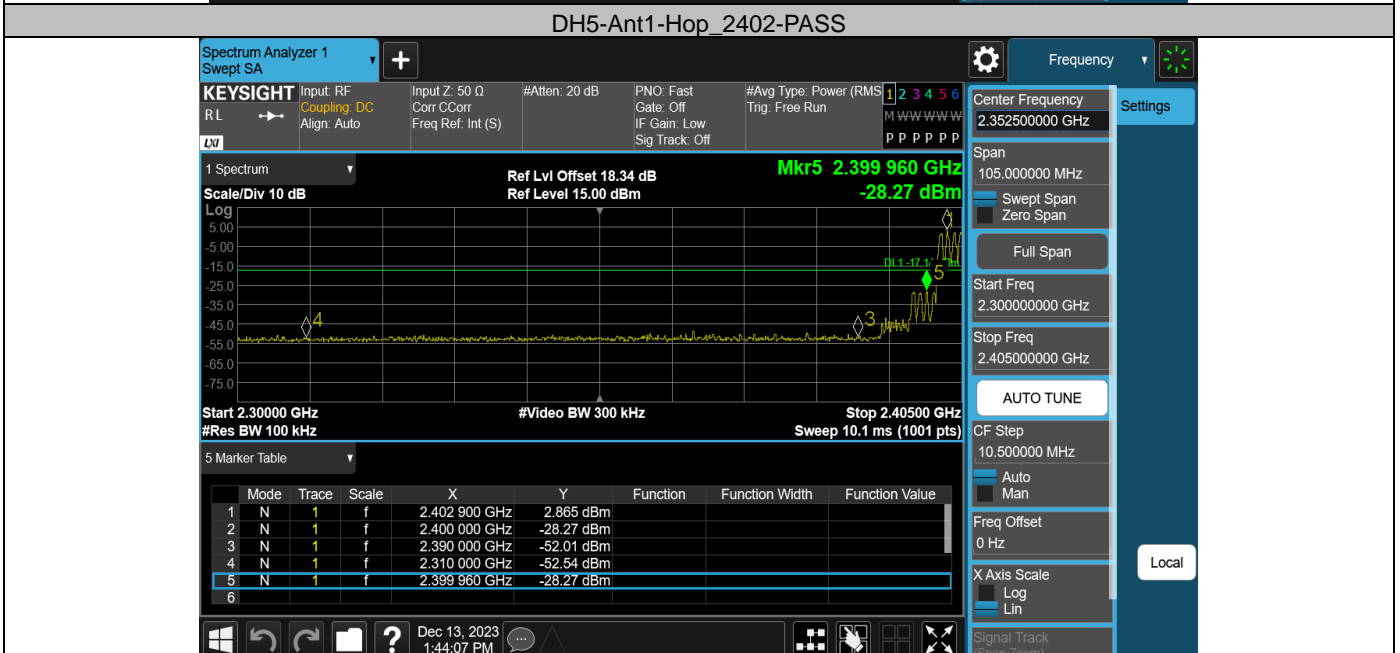
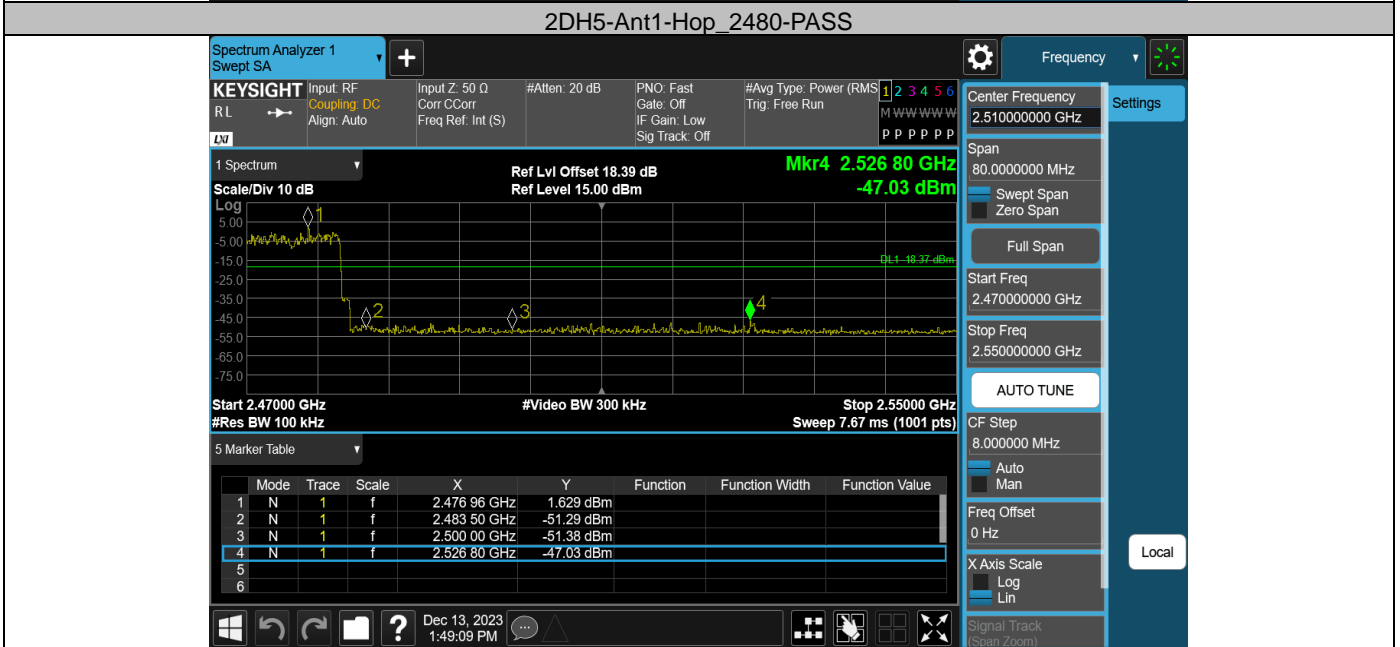
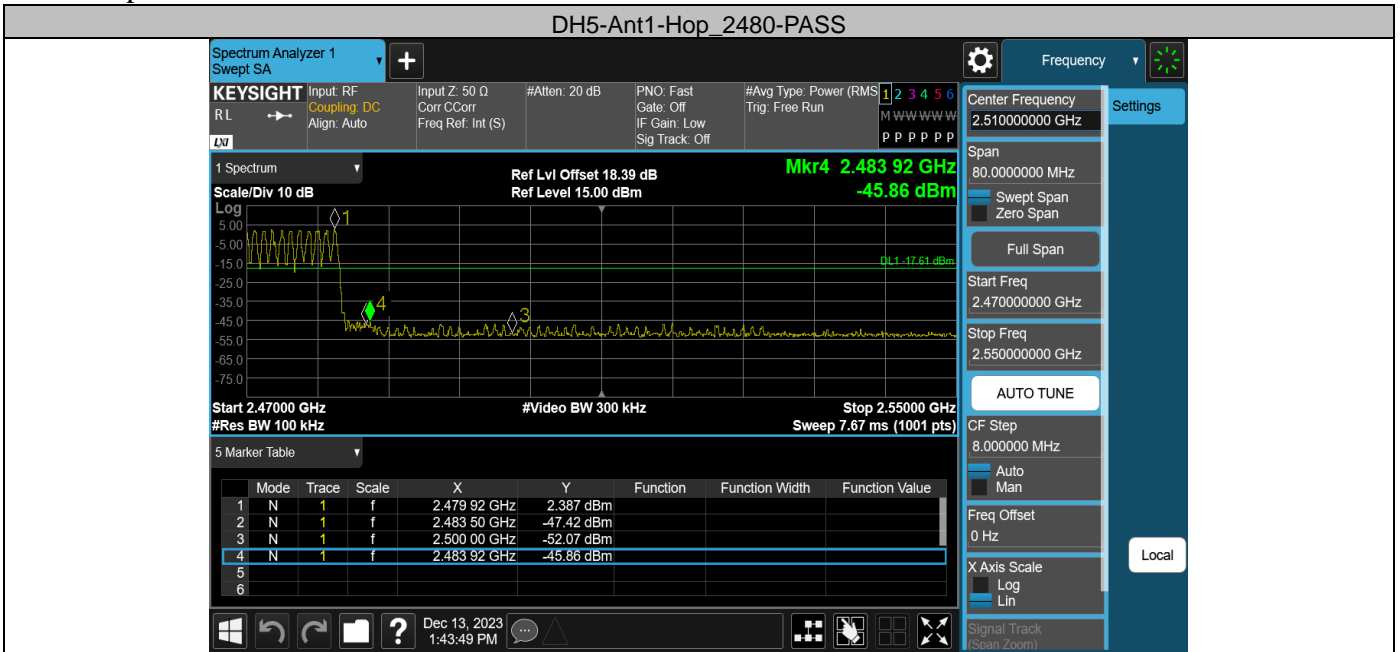


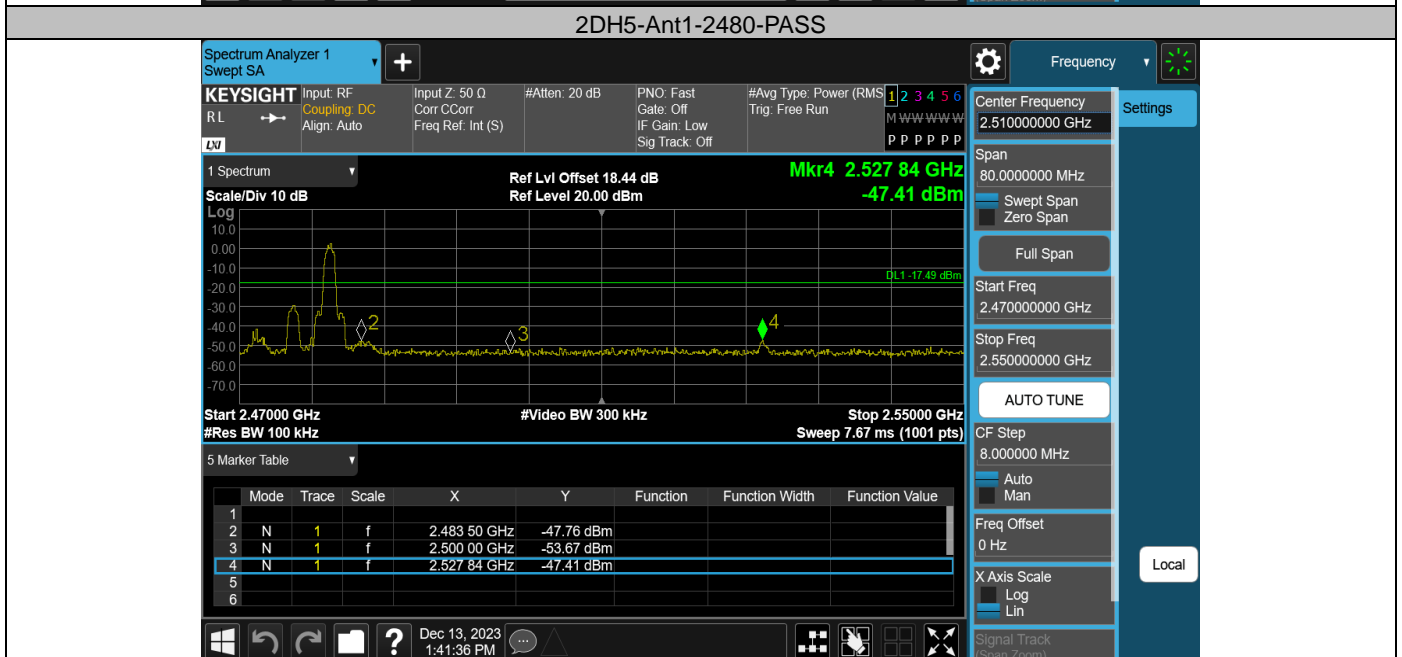
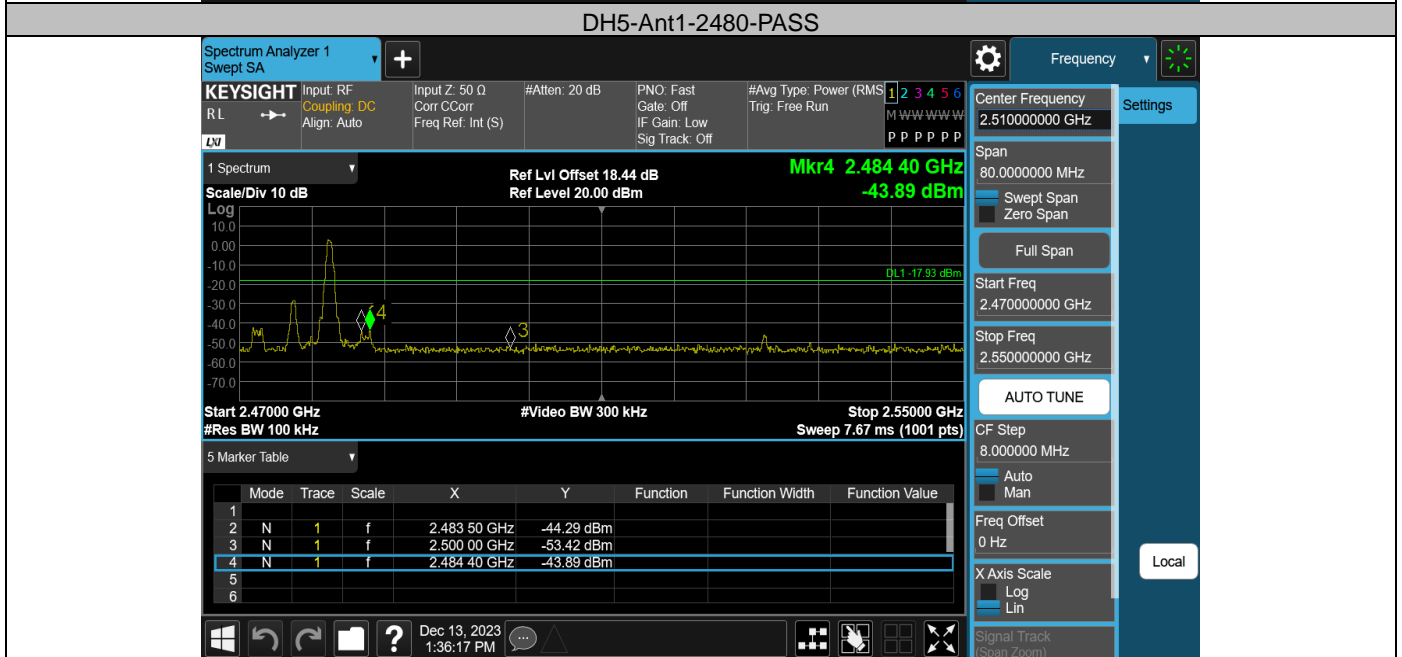
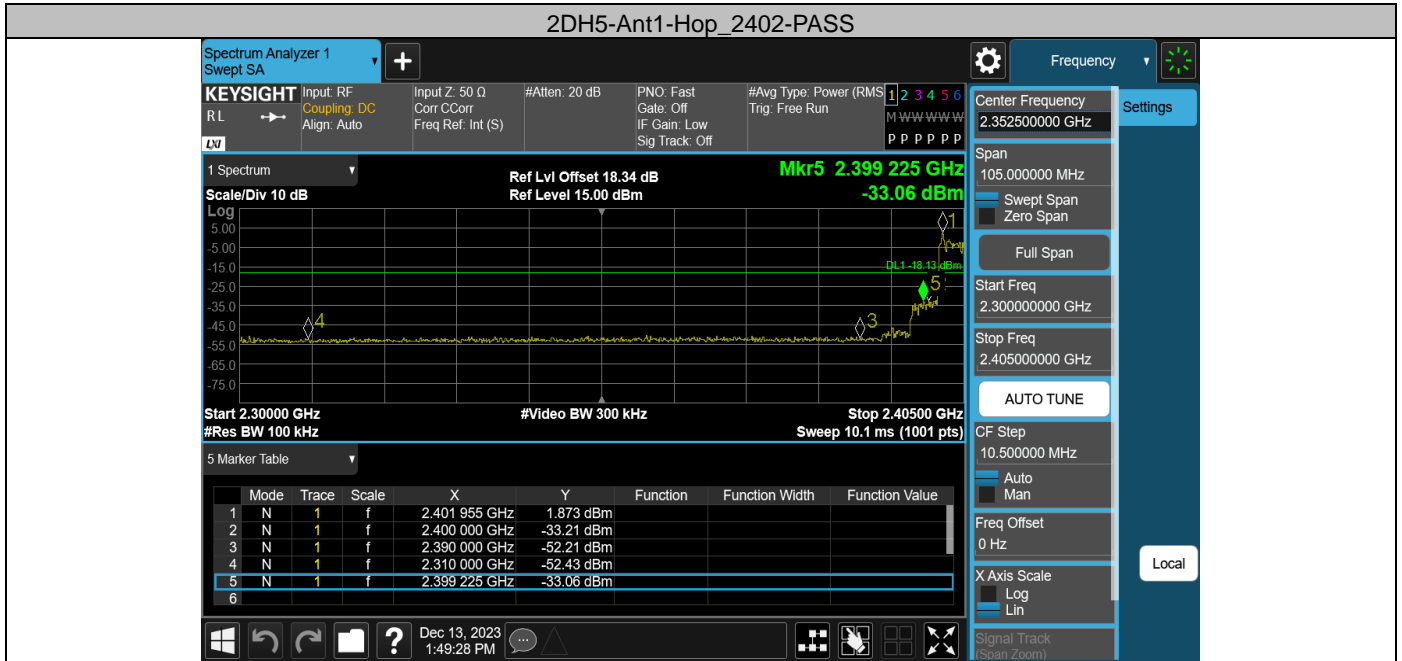
Appendix F: Band edge measurements

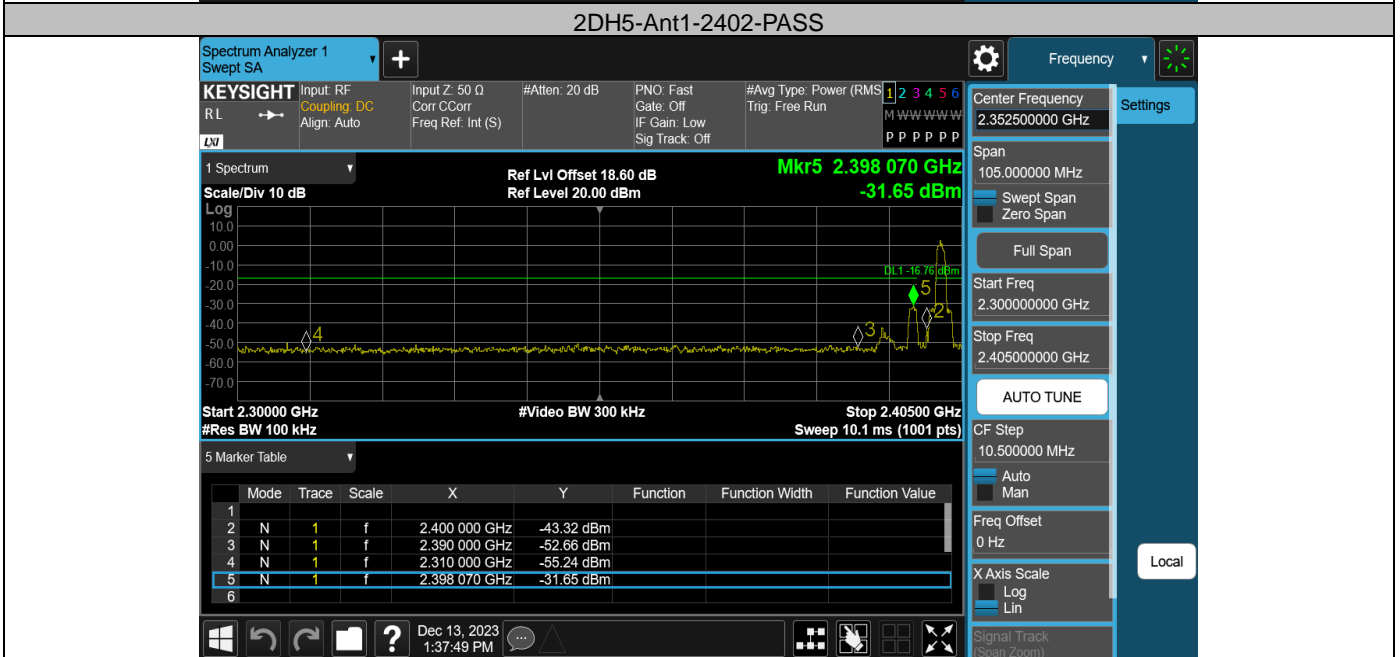
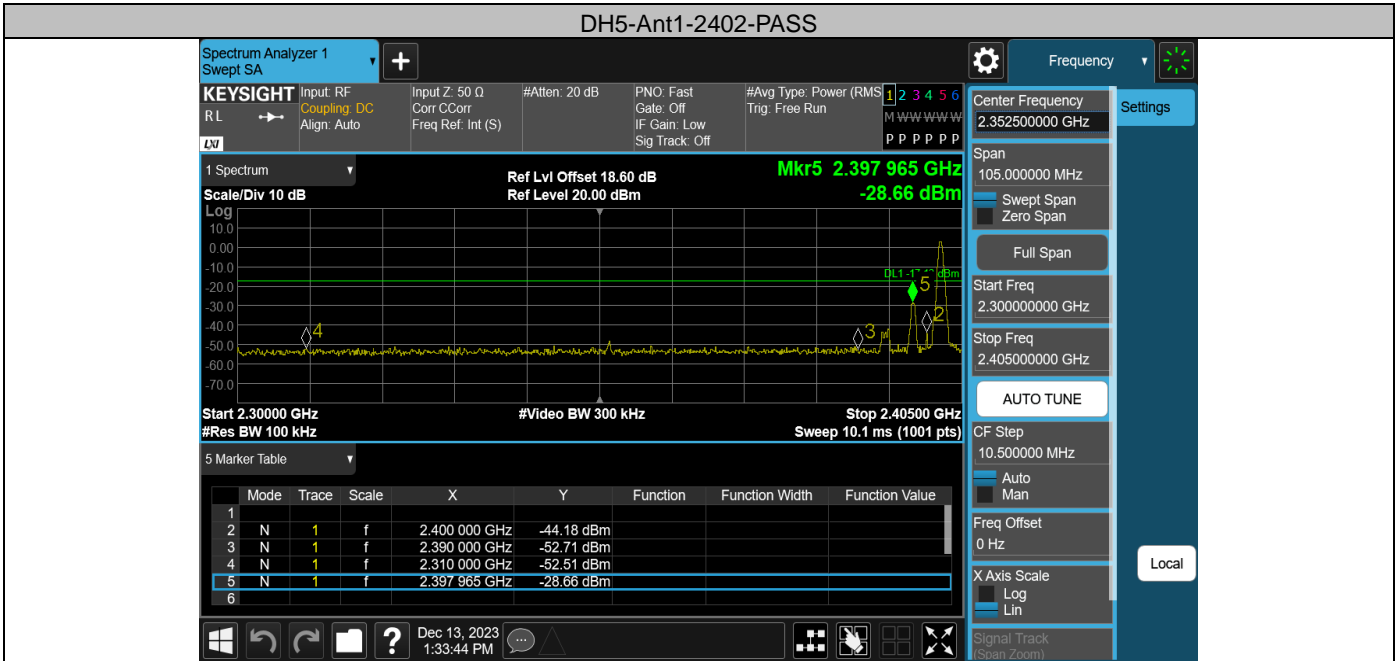
Test Result

TestMode	Antenna	ChName	Frequency[MHz]	RefLevel [dBm]	Result [dBm]	Limit [dBm]	Verdict
DH5	Ant1	High	Hop_2480	2.39	-45.86	≤-17.61	PASS
2DH5	Ant1	High	Hop_2480	1.63	-47.03	≤-18.37	PASS
DH5	Ant1	Low	Hop_2402	2.87	-28.27	≤-17.14	PASS
2DH5	Ant1	Low	Hop_2402	1.87	-33.06	≤-18.13	PASS
DH5	Ant1	High	2480	2.07	-43.89	≤-17.93	PASS
2DH5	Ant1	High	2480	2.51	-47.41	≤-17.49	PASS
DH5	Ant1	Low	2402	2.87	-28.66	≤-17.13	PASS
2DH5	Ant1	Low	2402	3.24	-31.65	≤-16.76	PASS

Test Graphs



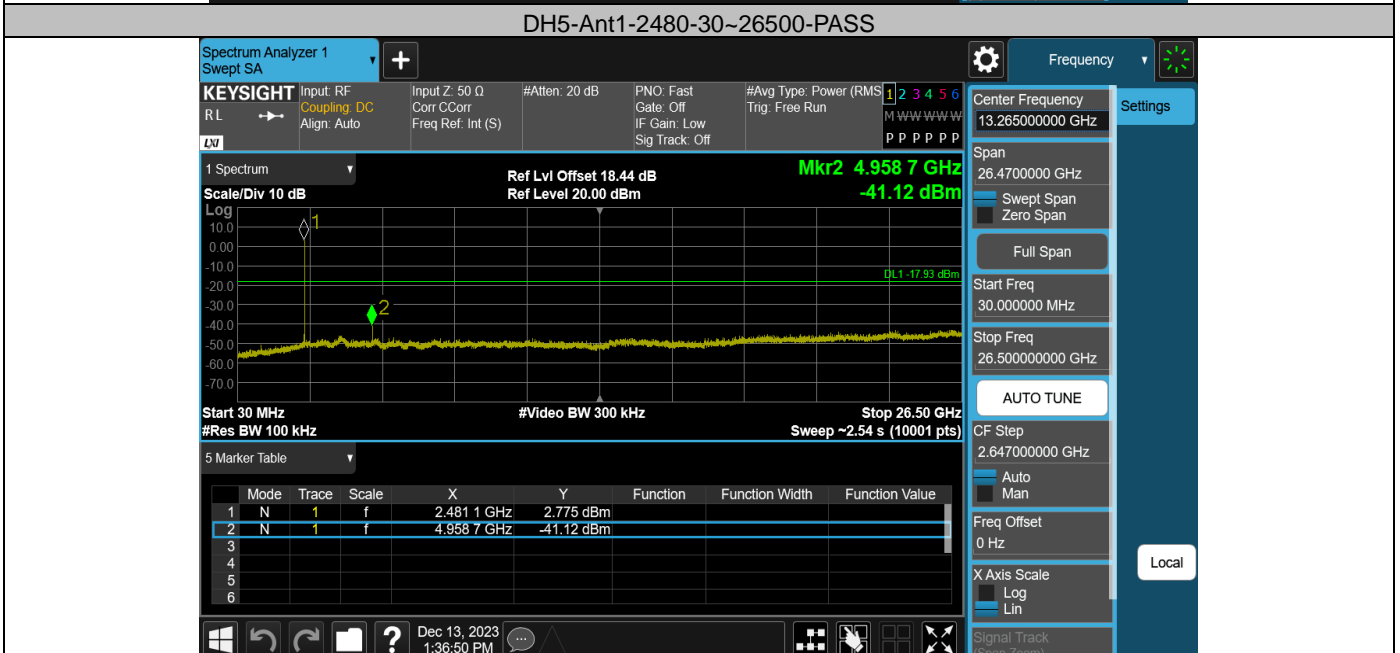
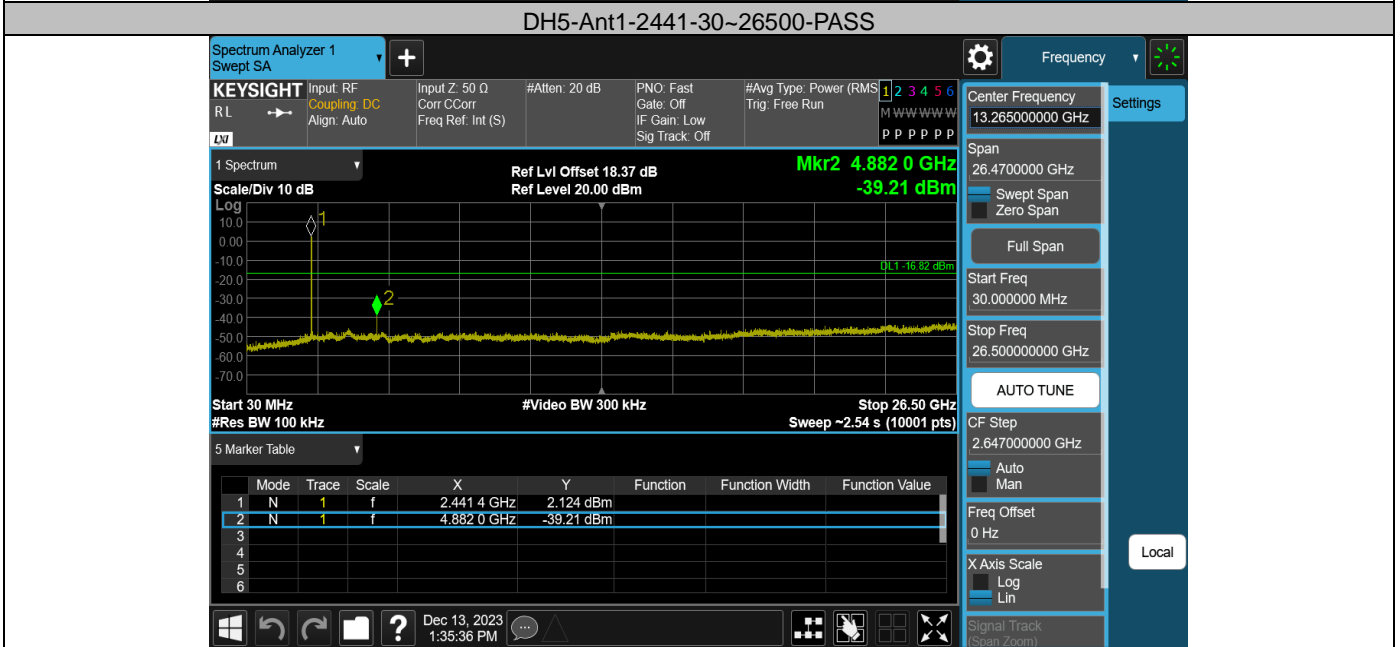
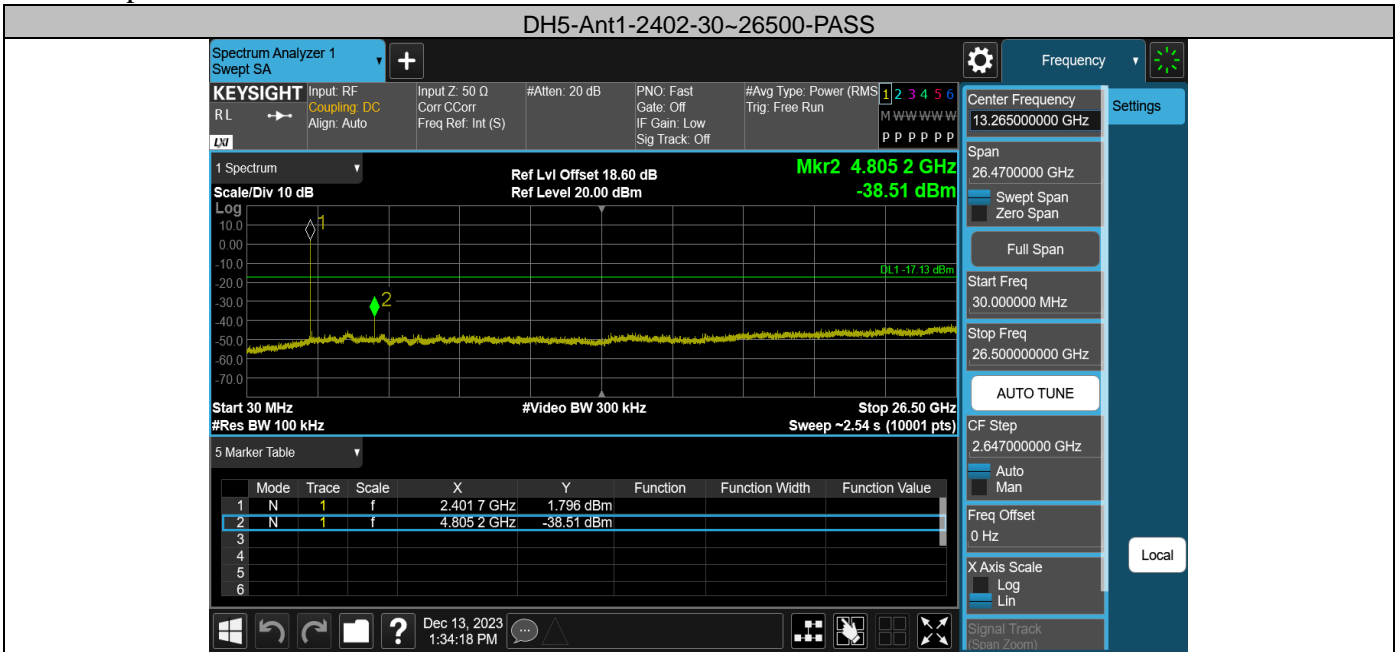


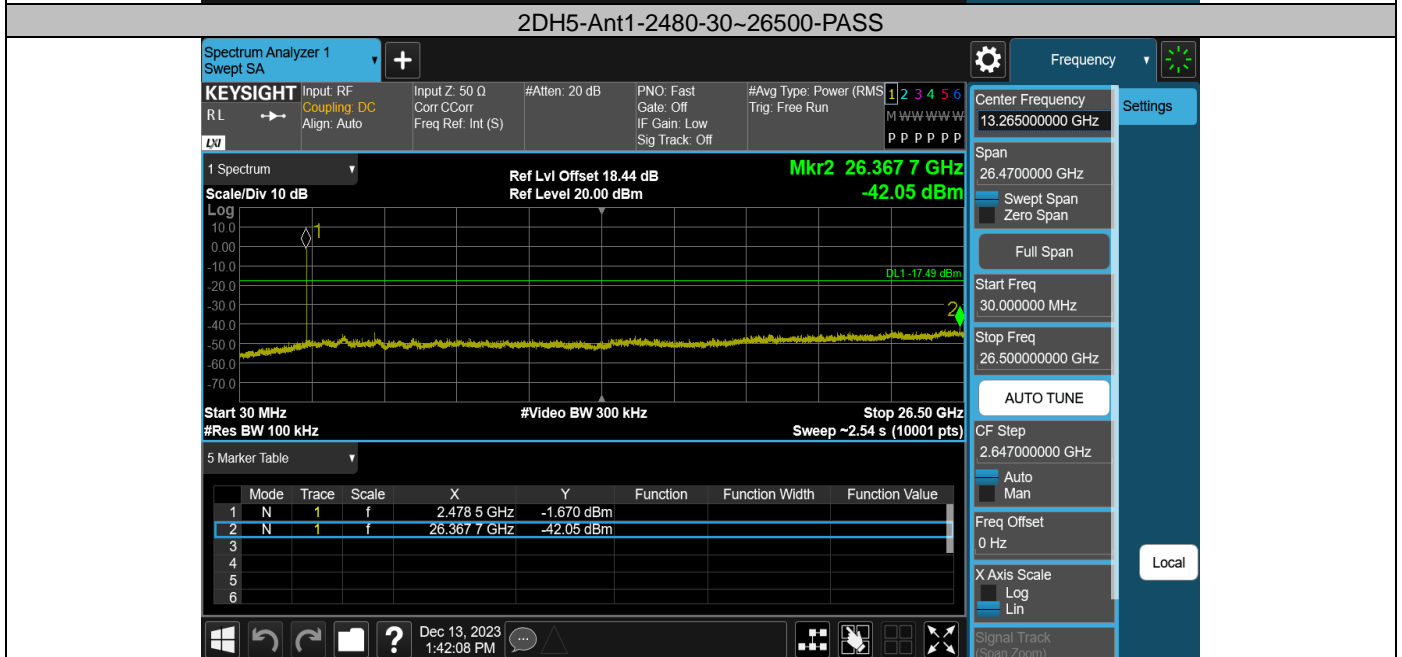
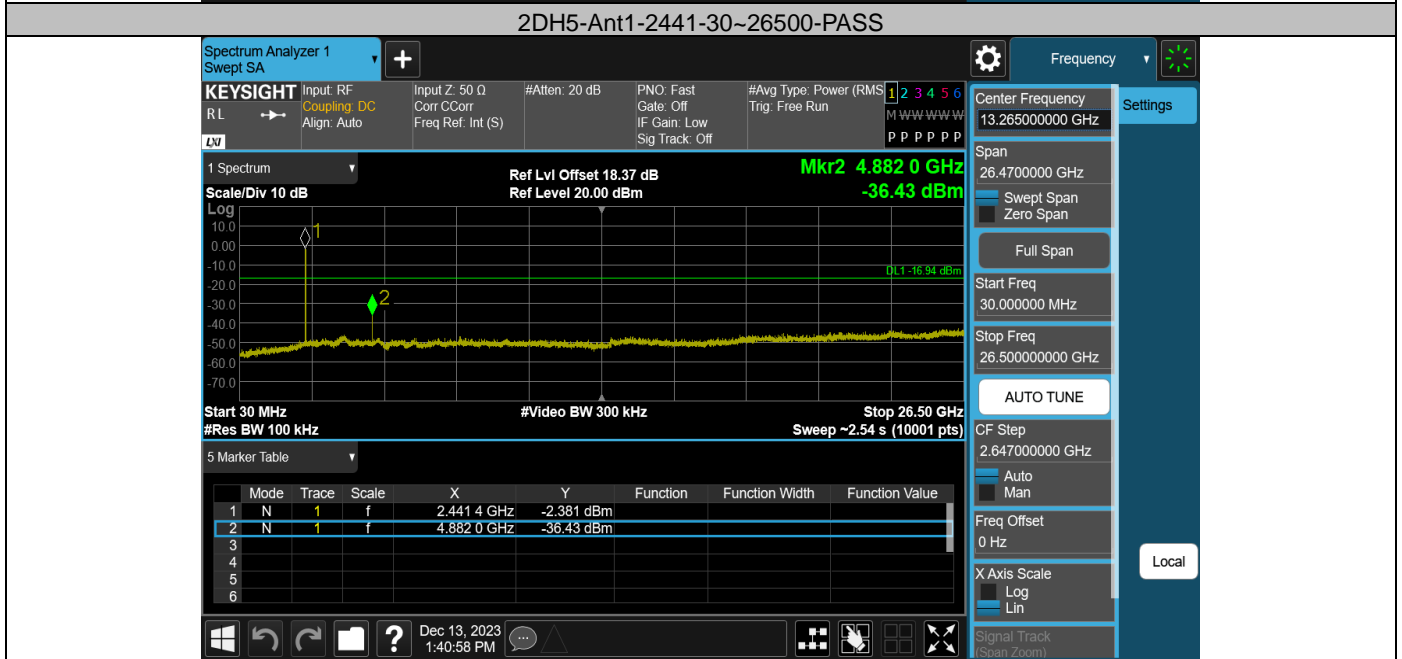
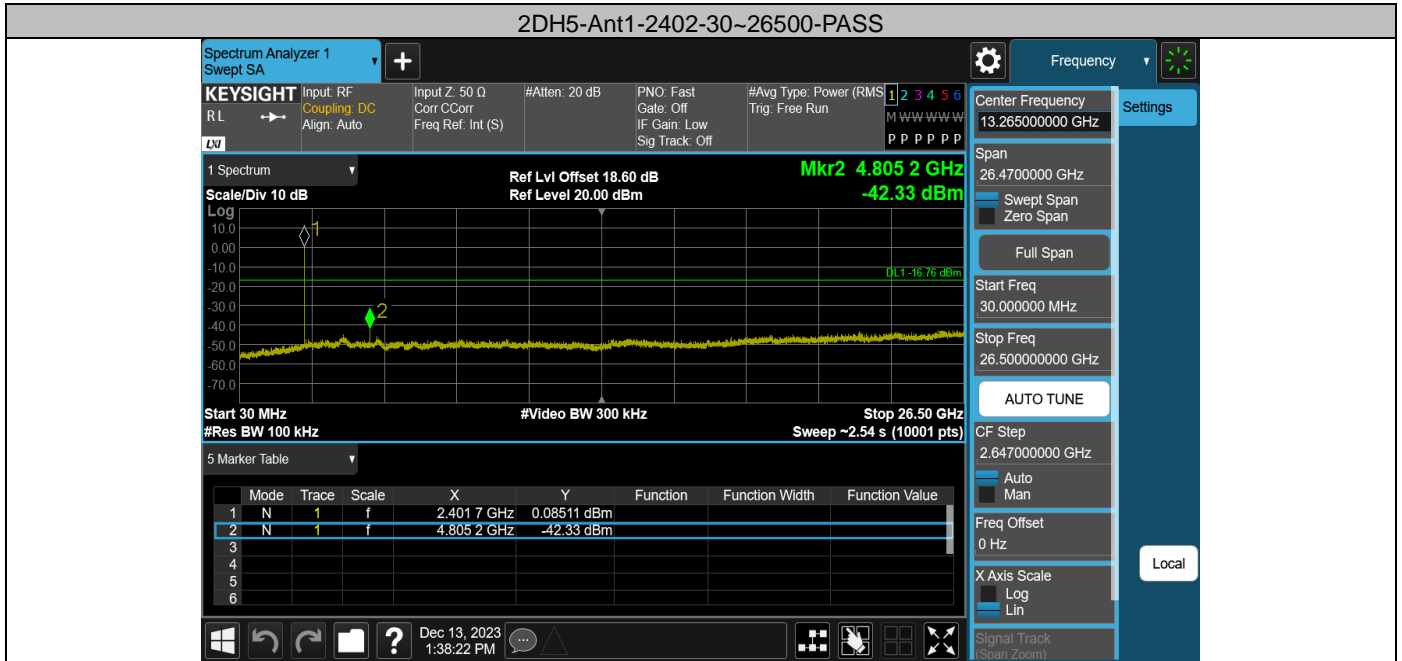


Appendix G: Conducted Spurious Emission Test Result

TestMode	Antenna	Frequency[MHz]	FreqRange [MHz]	RefLevel [dBm]	Result [dBm]	Limit [dBm]	Verdict
DH5	Ant1	2402	30~26500	2.87	-38.51	≤-17.13	PASS
DH5	Ant1	2441	30~26500	3.18	-39.21	≤-16.82	PASS
DH5	Ant1	2480	30~26500	2.07	-41.12	≤-17.93	PASS
2DH5	Ant1	2402	30~26500	3.24	-42.33	≤-16.76	PASS
2DH5	Ant1	2441	30~26500	3.06	-36.43	≤-16.94	PASS
2DH5	Ant1	2480	30~26500	2.51	-42.05	≤-17.49	PASS

Test Graphs

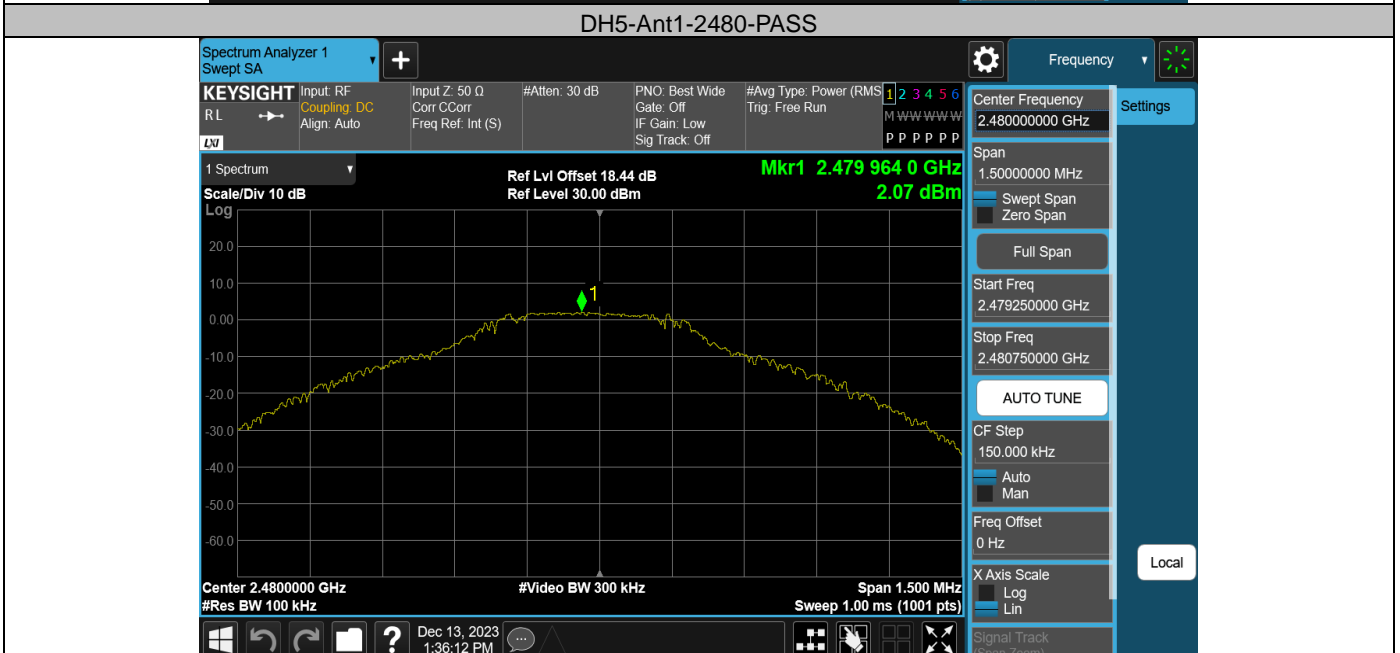
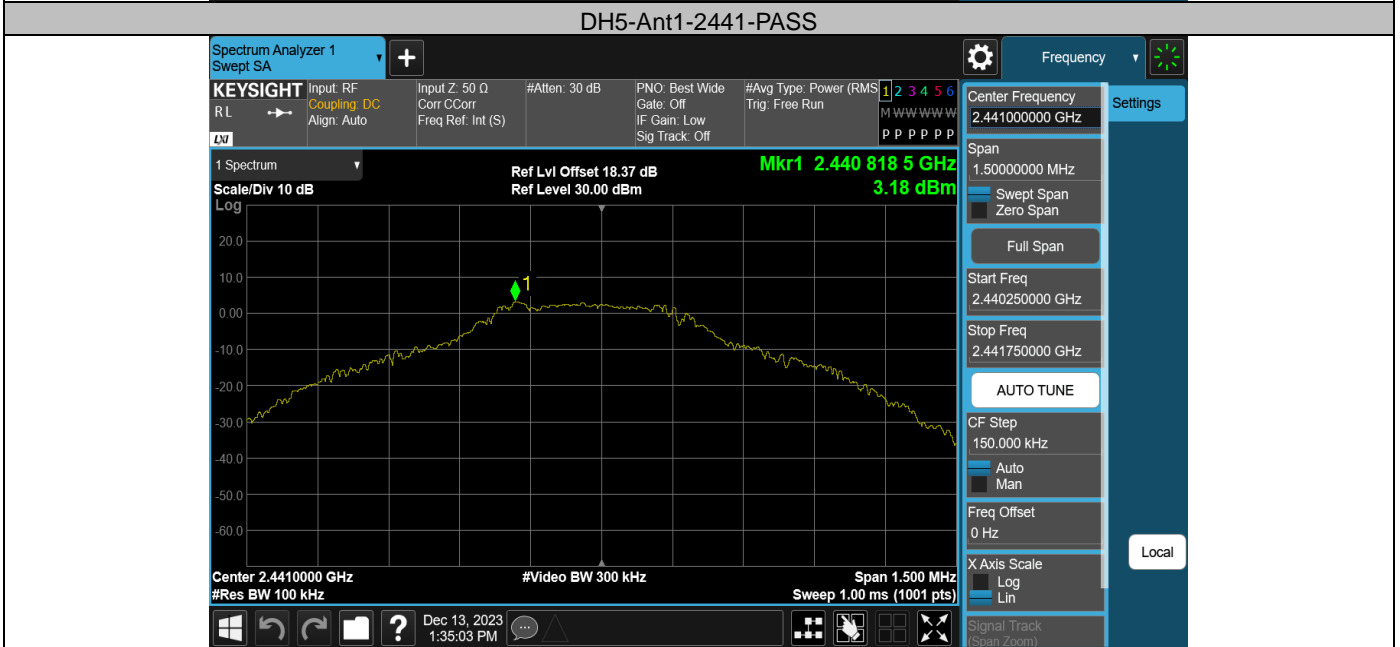
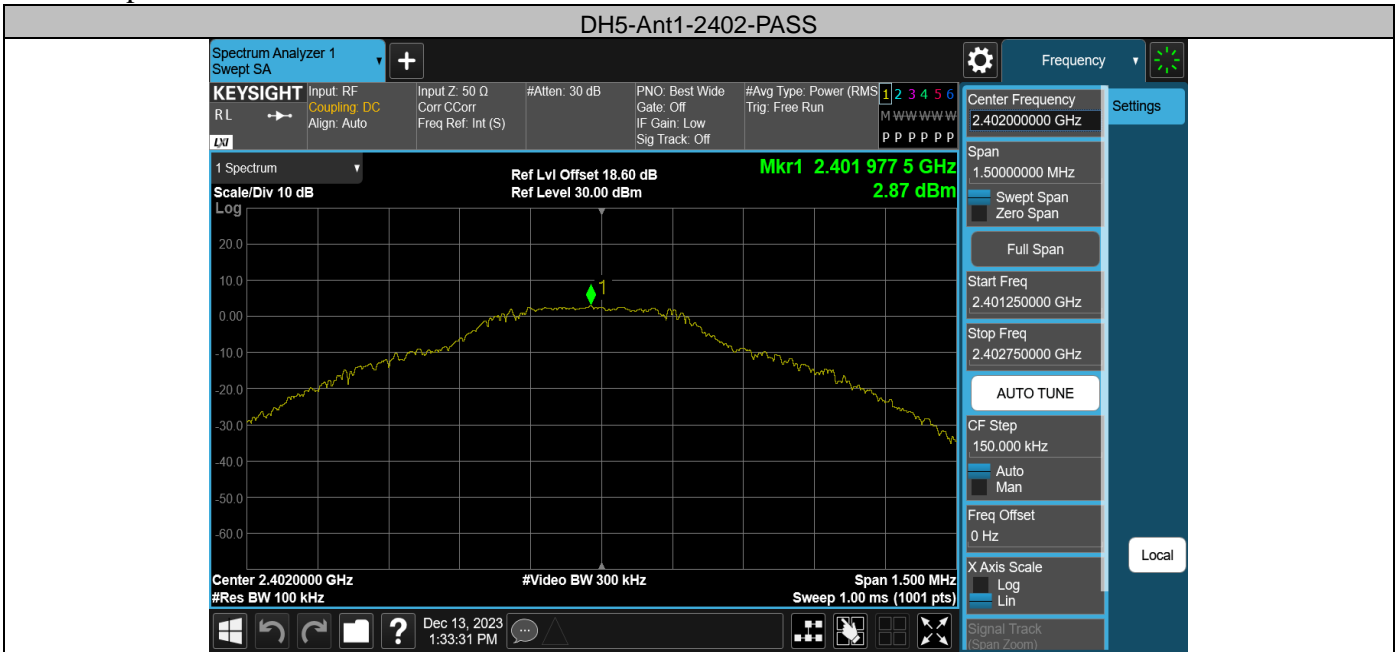


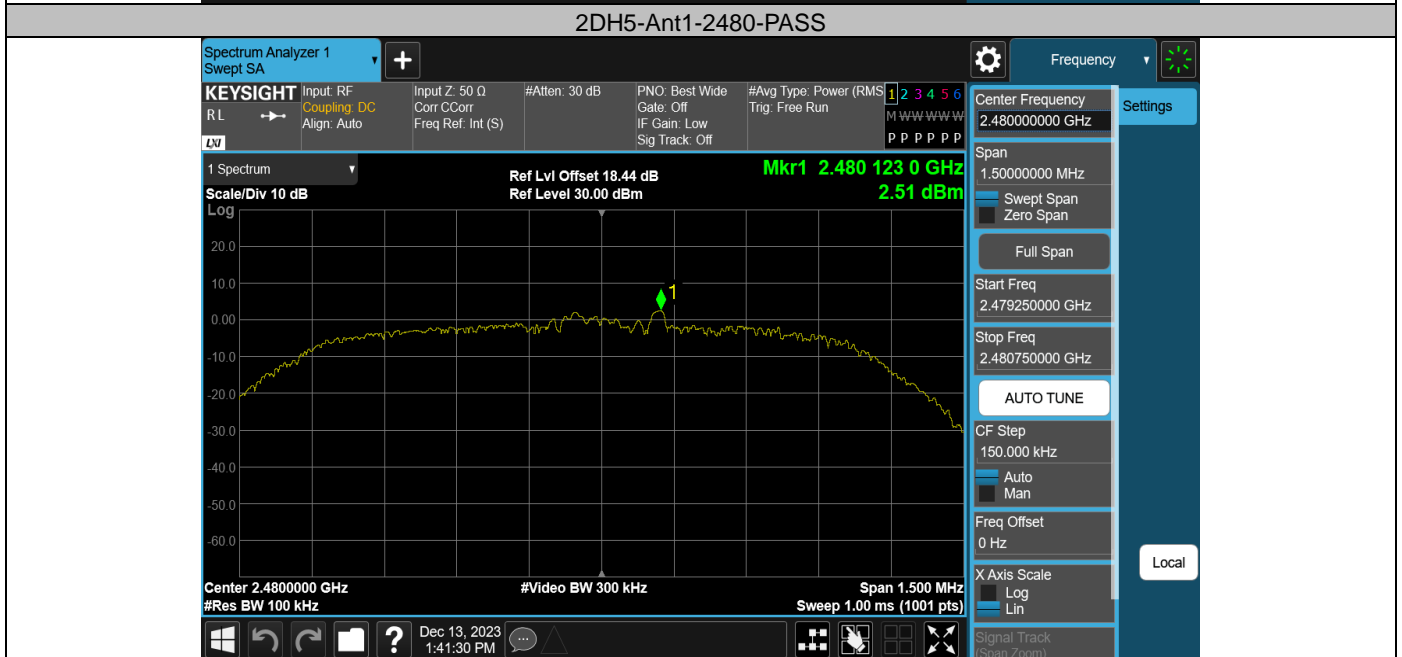
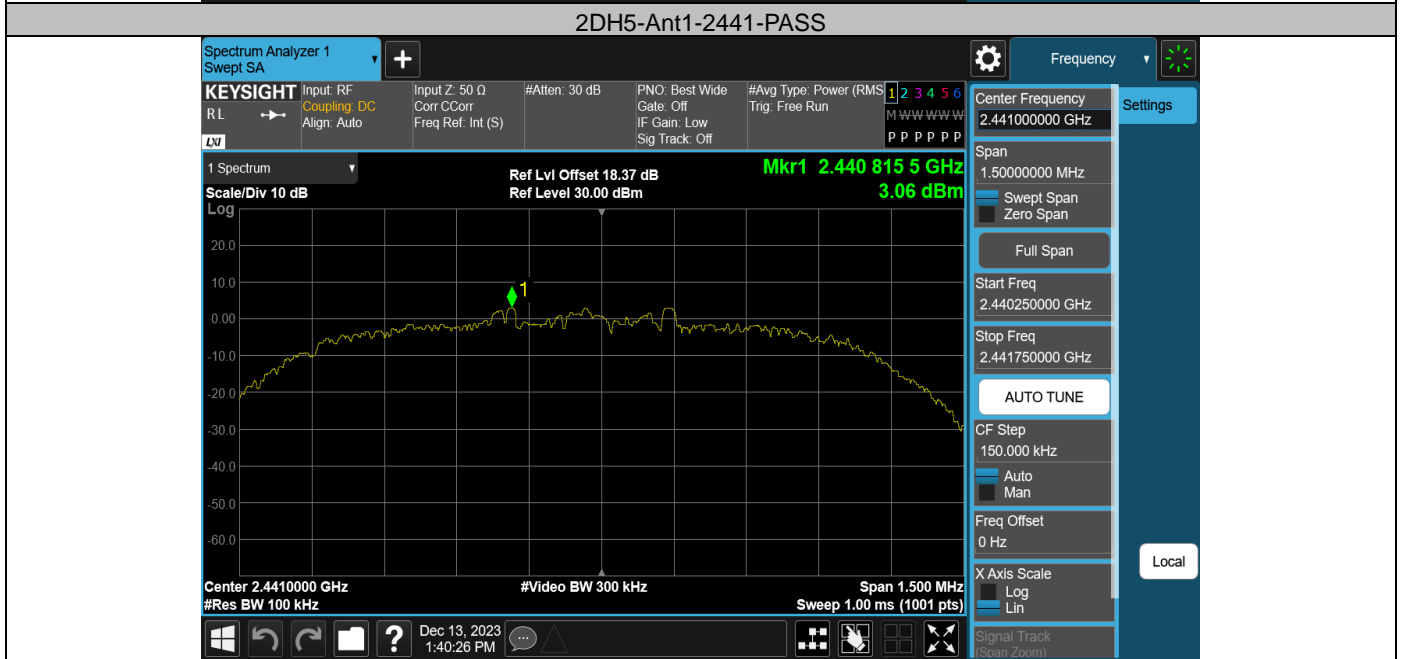
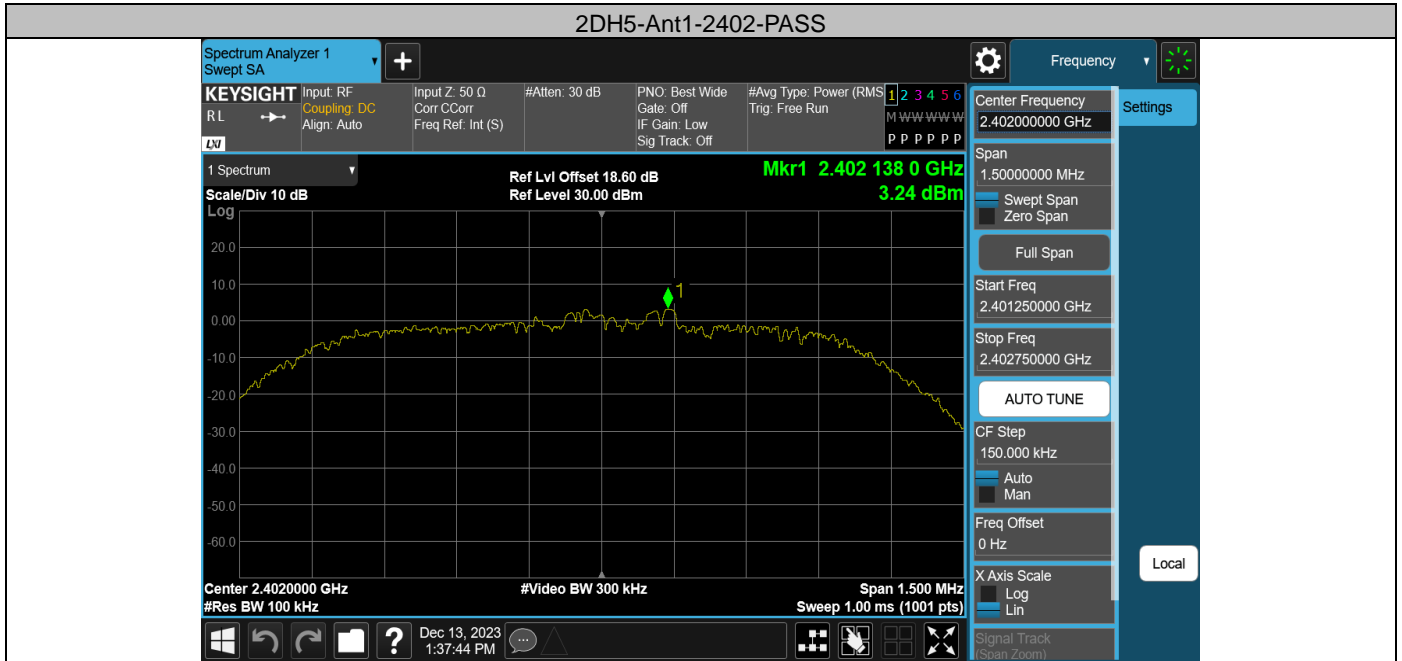


Appendix H: Reference level measurement
 Test Result

TestMode	Antenna	Freq(MHz)	Max.Point[MHz]	Result[dBm]
DH5	Ant1	2402	2401.98	2.87
DH5	Ant1	2441	2440.82	3.18
DH5	Ant1	2480	2479.96	2.07
2DH5	Ant1	2402	2402.14	3.24
2DH5	Ant1	2441	2440.82	3.06
2DH5	Ant1	2480	2480.12	2.51

Test Graphs



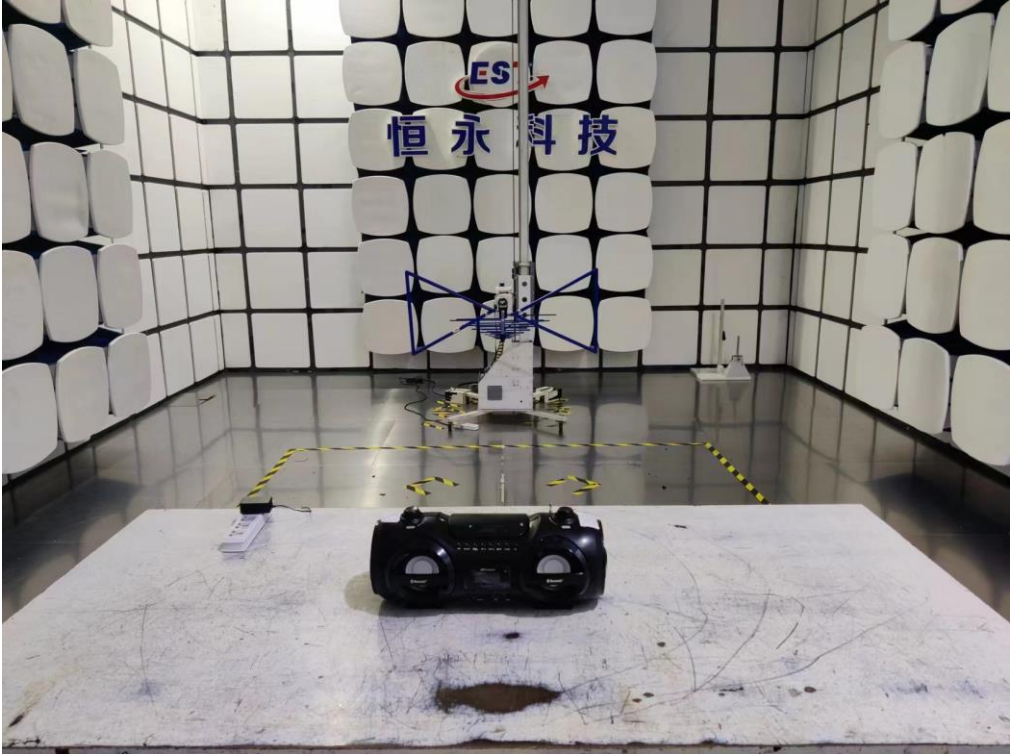


14. TEST SETUP PHOTO

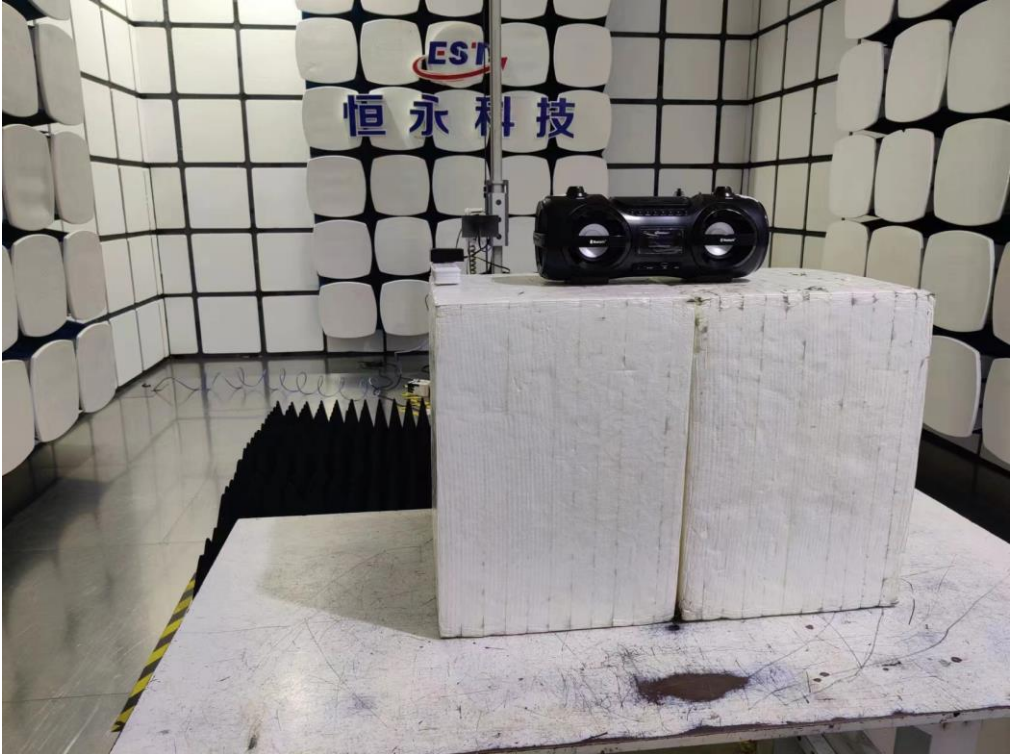
Conducted Test



Radiated Test (Below 1GHz)



Radiated Test (Above 1GHz)



15. EUT PHOTO

External Photos
M/N: CD328BT



External Photos
M/N: CD328BT



External Photos
M/N: CD328BT



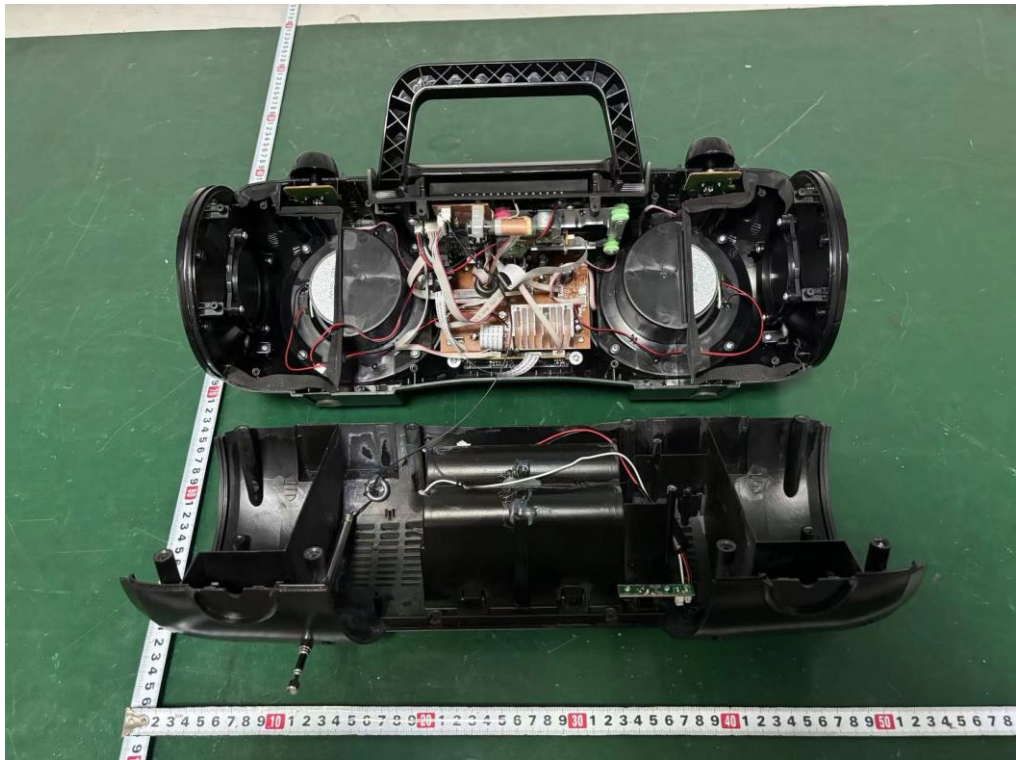
External Photos
M/N: CD328BT



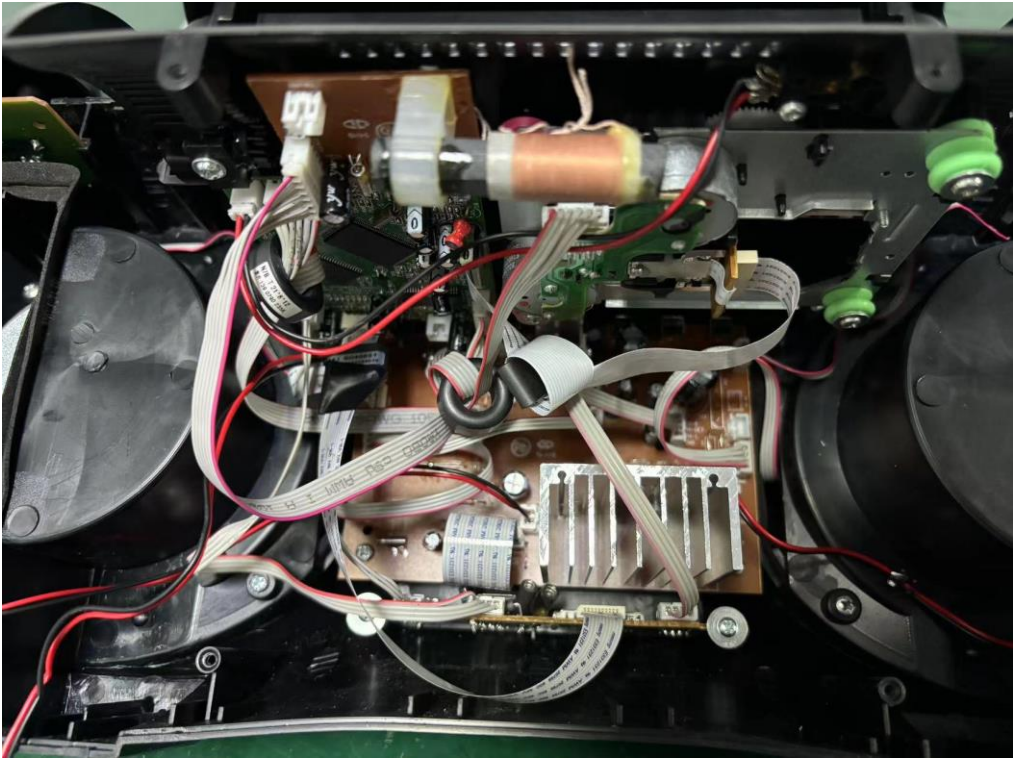
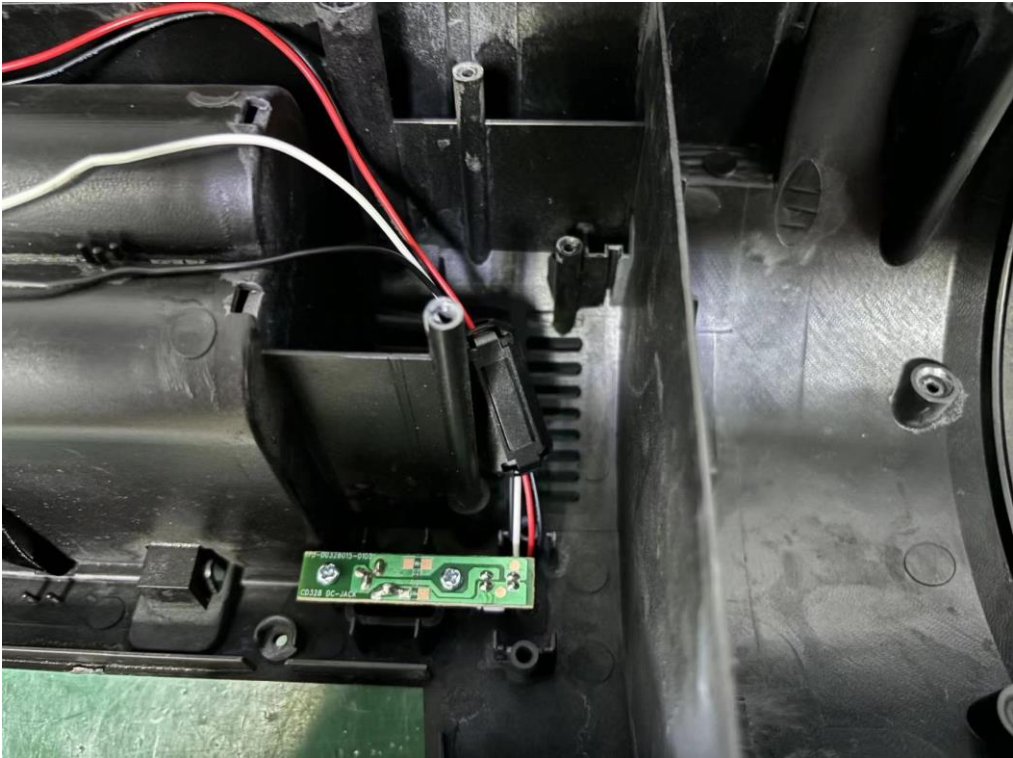
External Photos
M/N: CD328BT



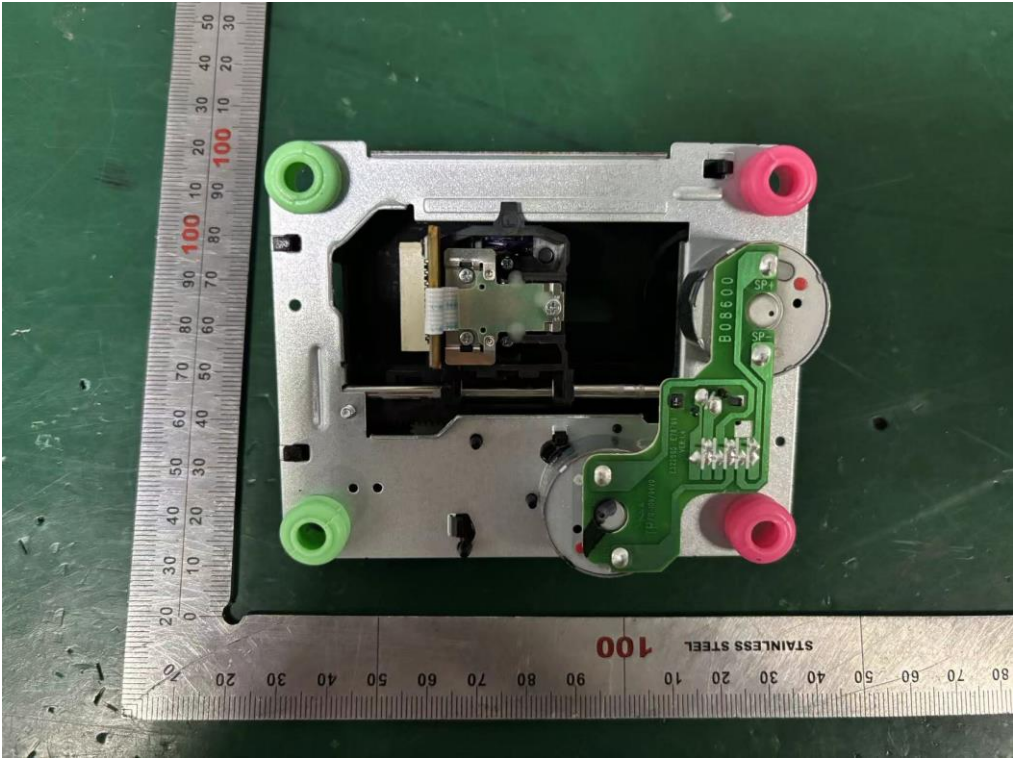
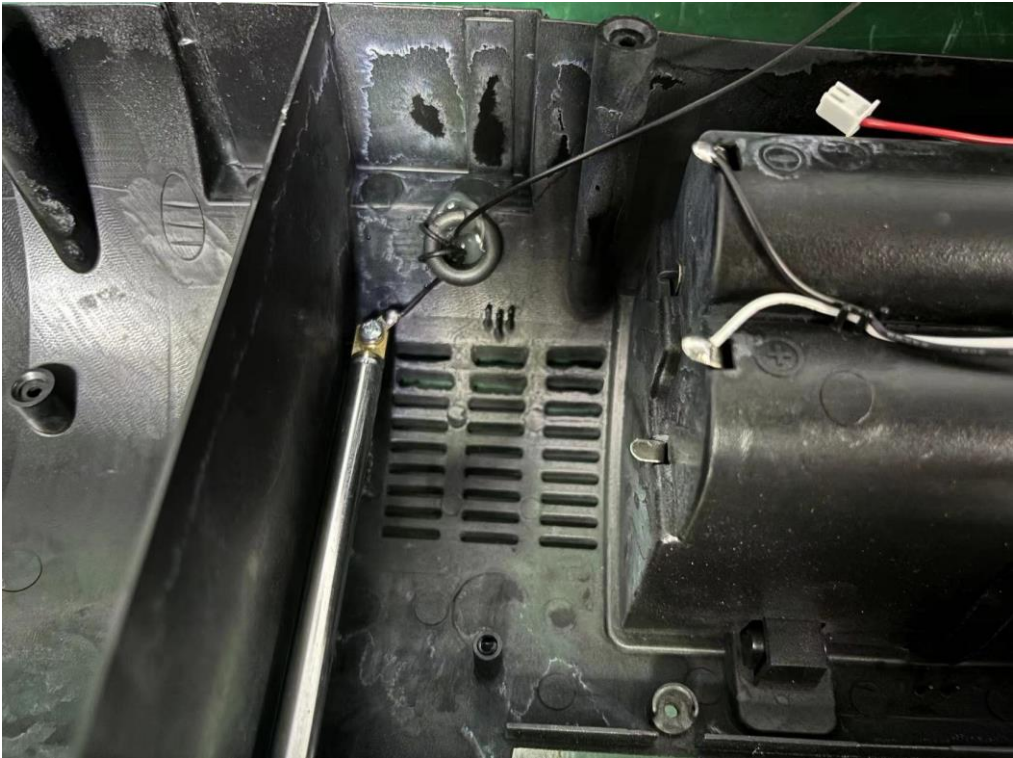
Internal Photos
M/N: CD328BT



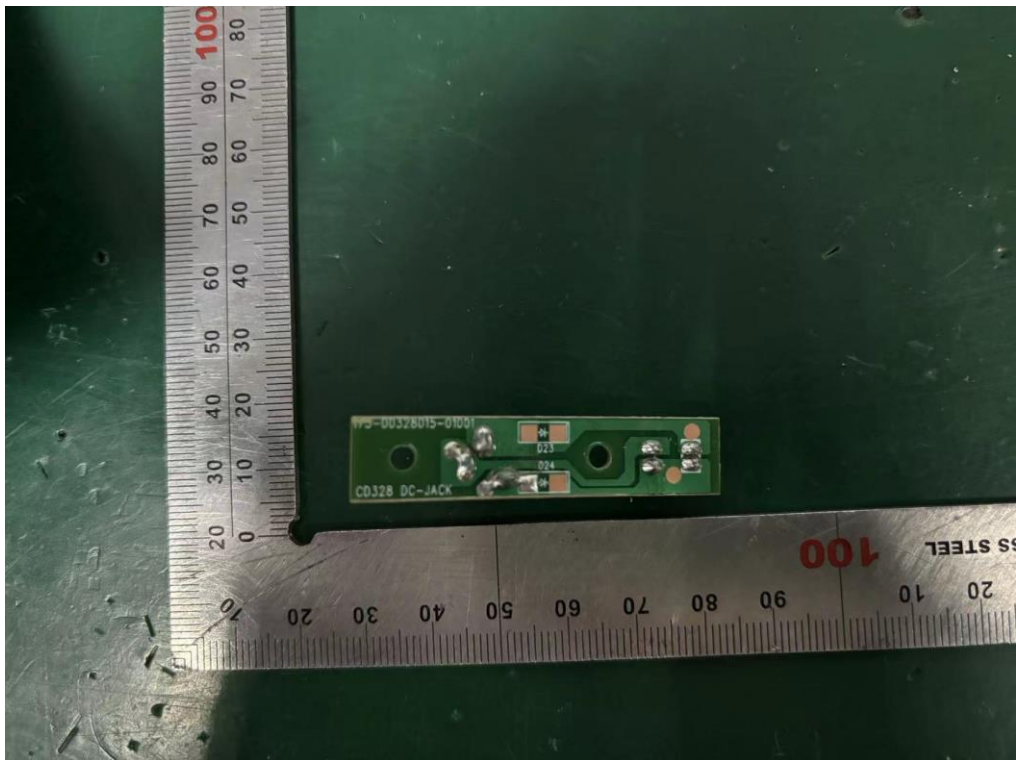
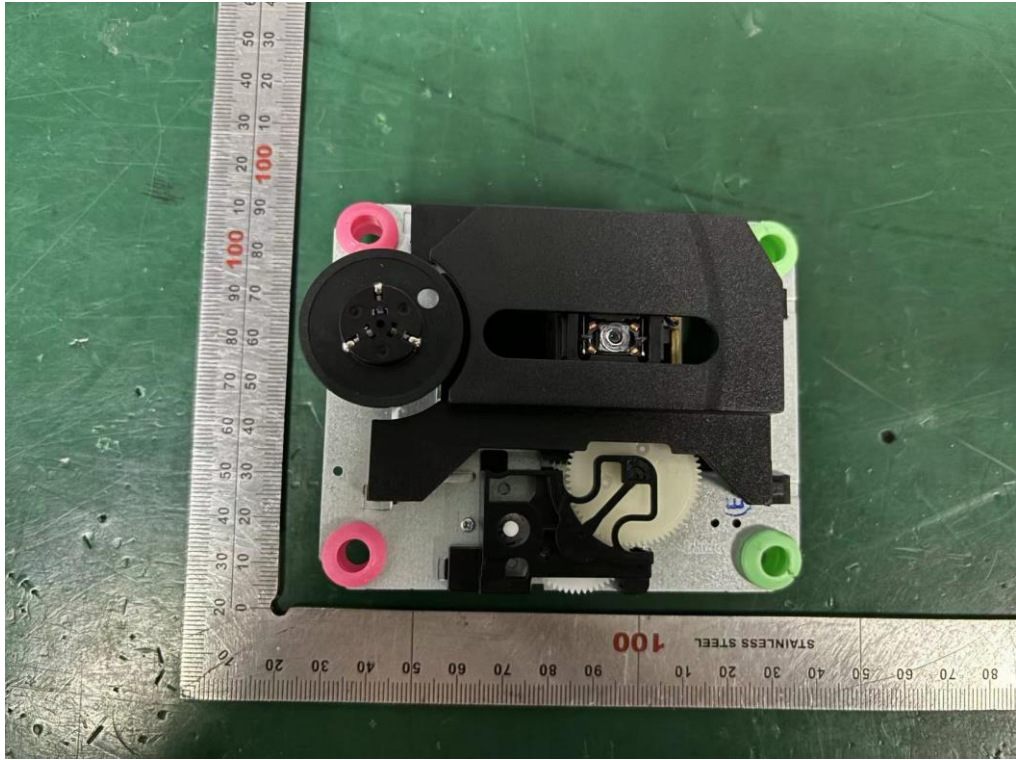
Internal Photos
M/N: CD328BT



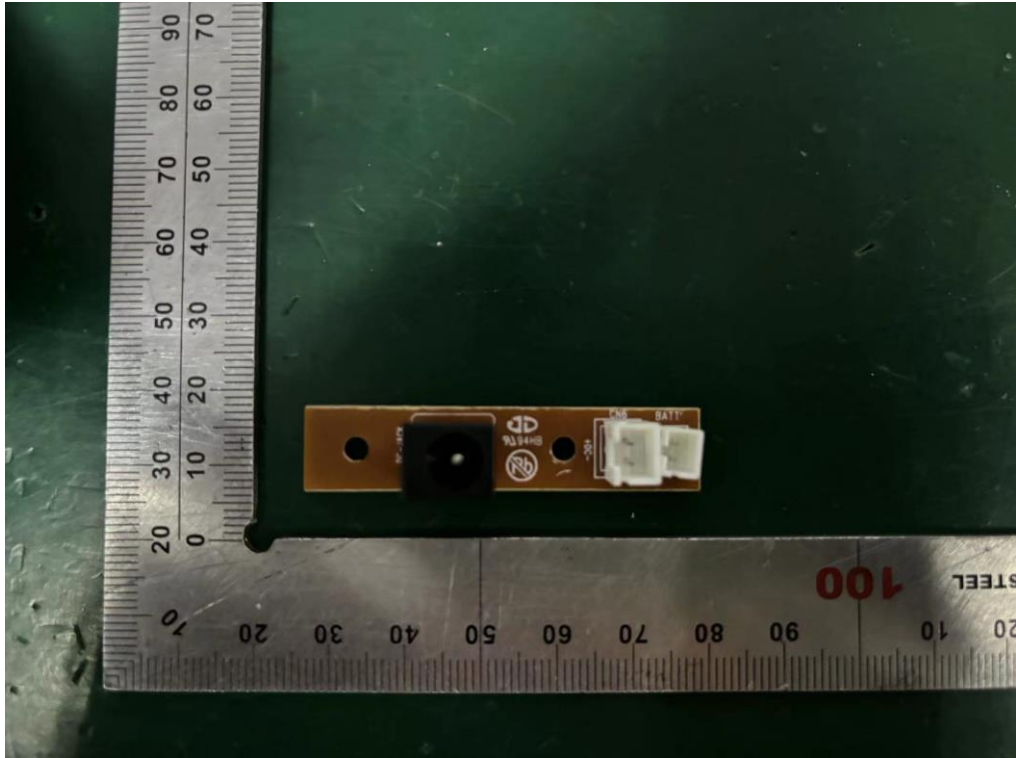
Internal Photos
M/N: CD328BT



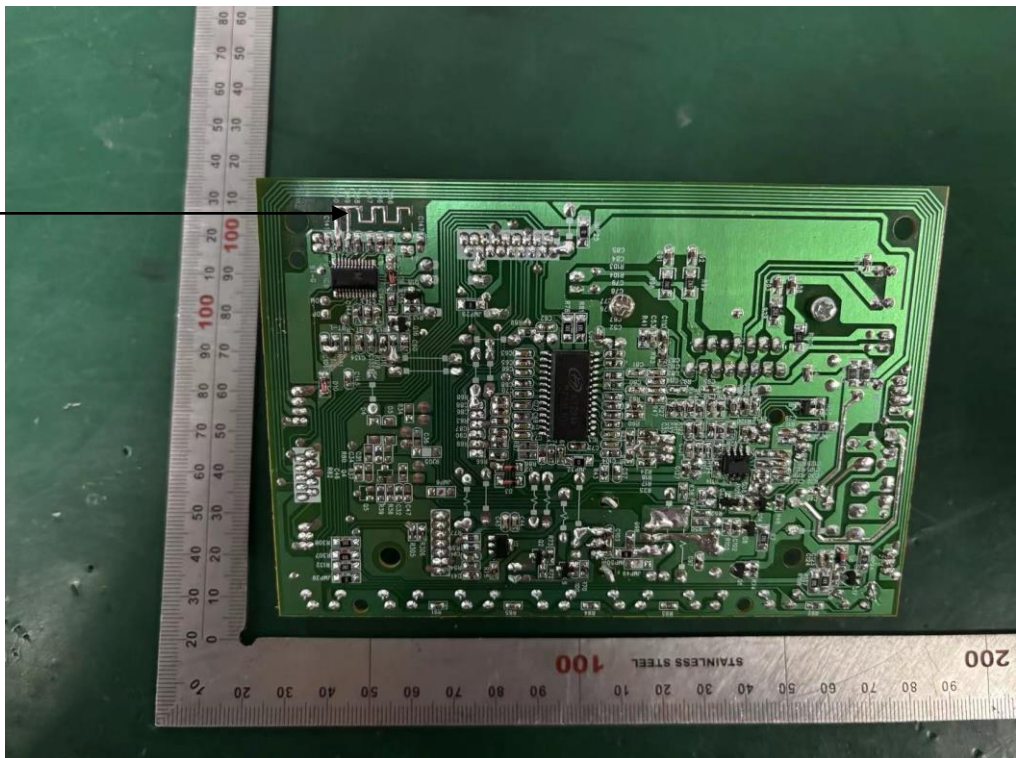
Internal Photos
M/N: CD328BT



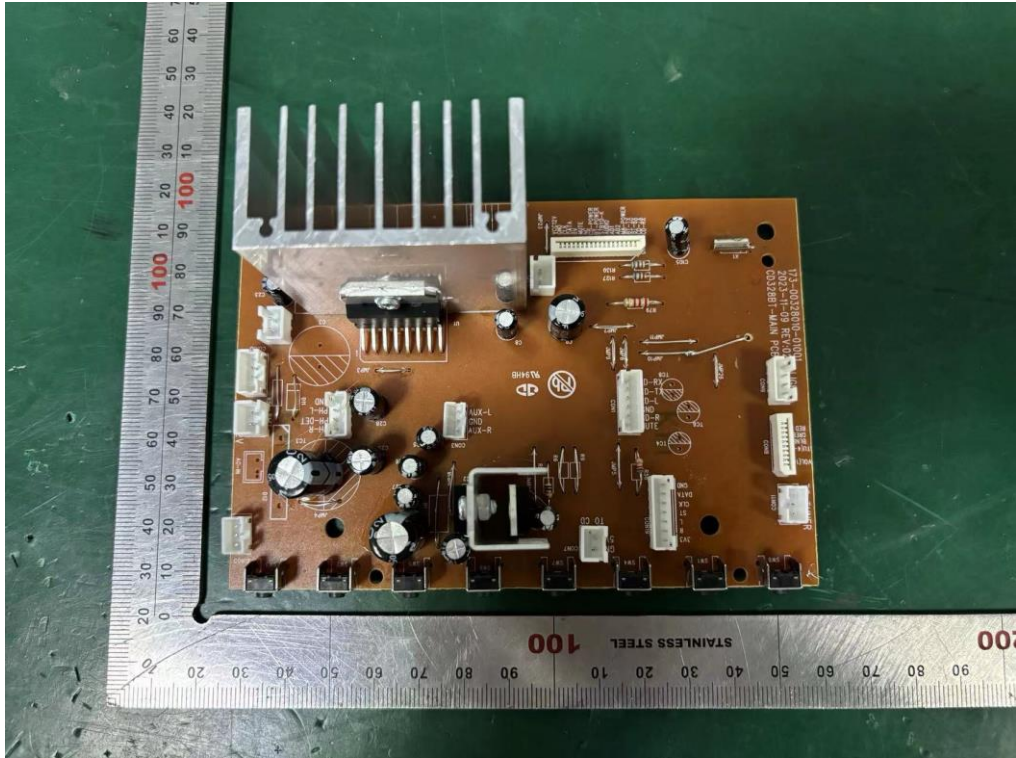
Internal Photos
M/N: CD328BT



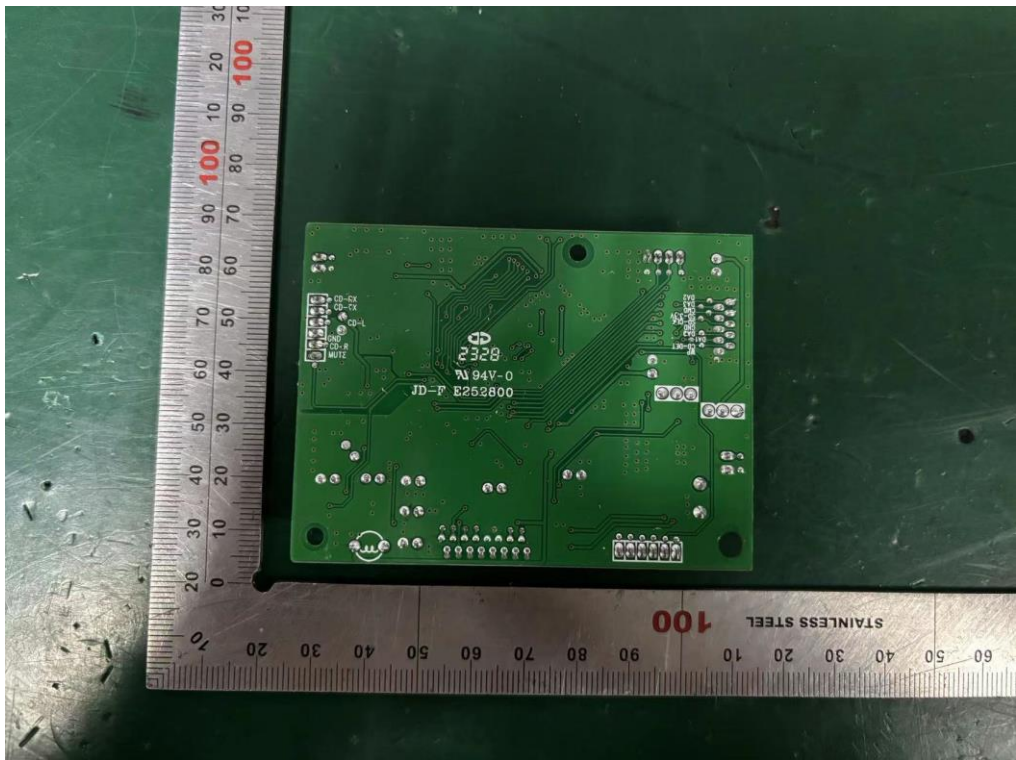
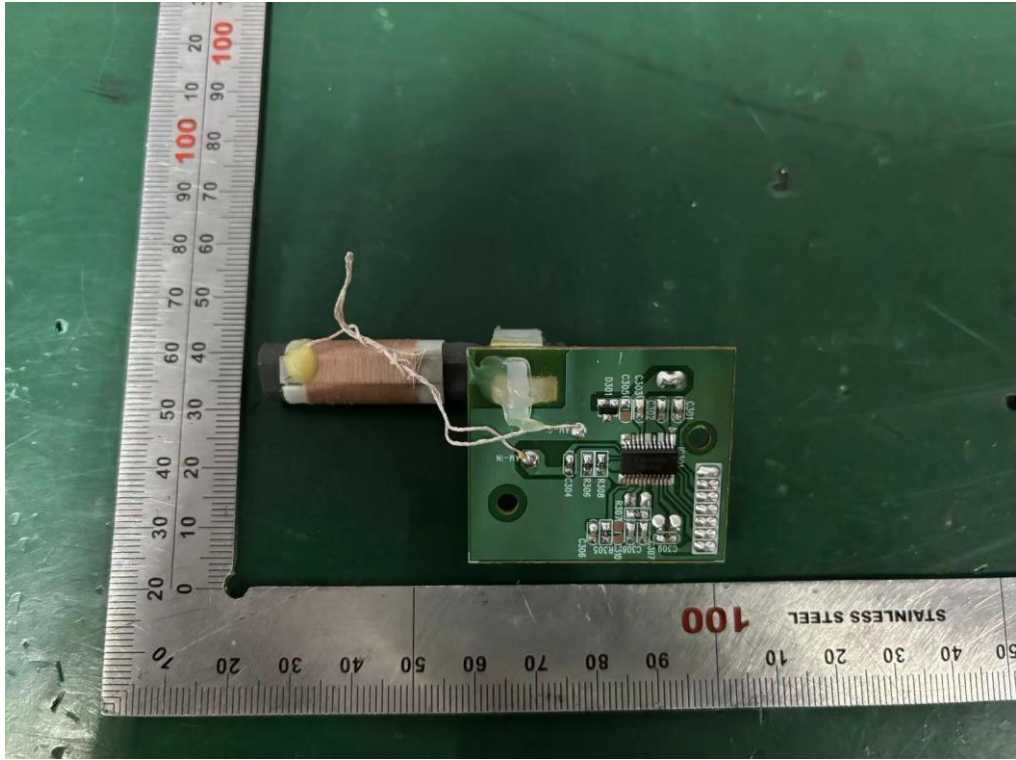
Bluetooth
Antenna



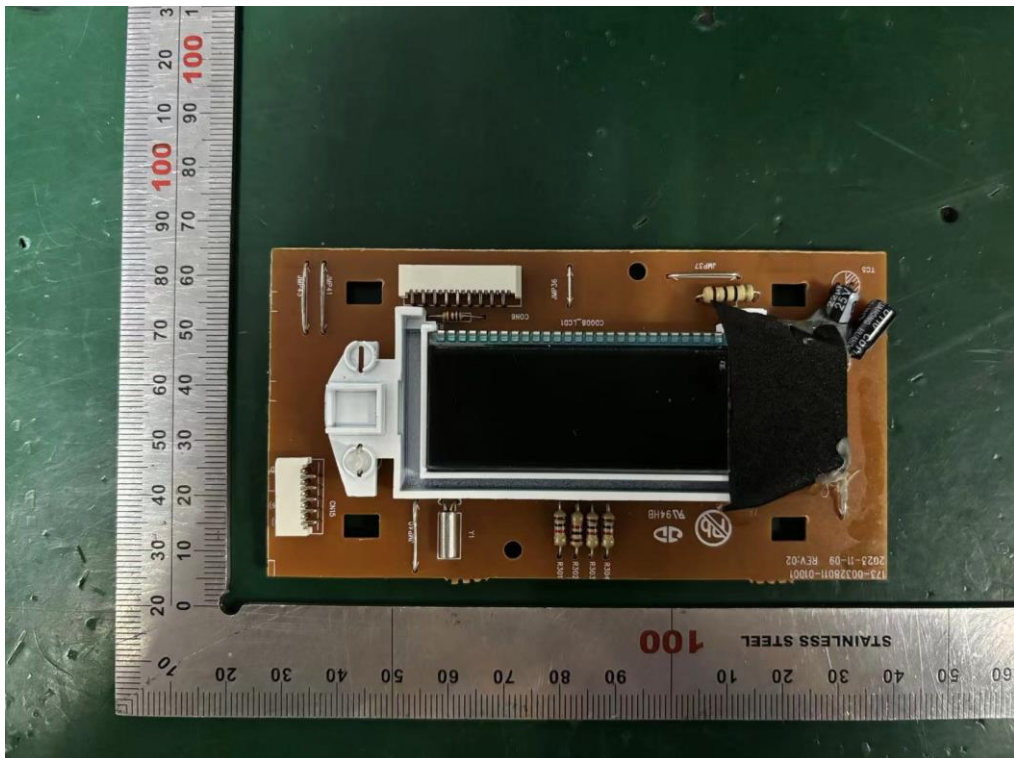
Internal Photos
M/N: CD328BT



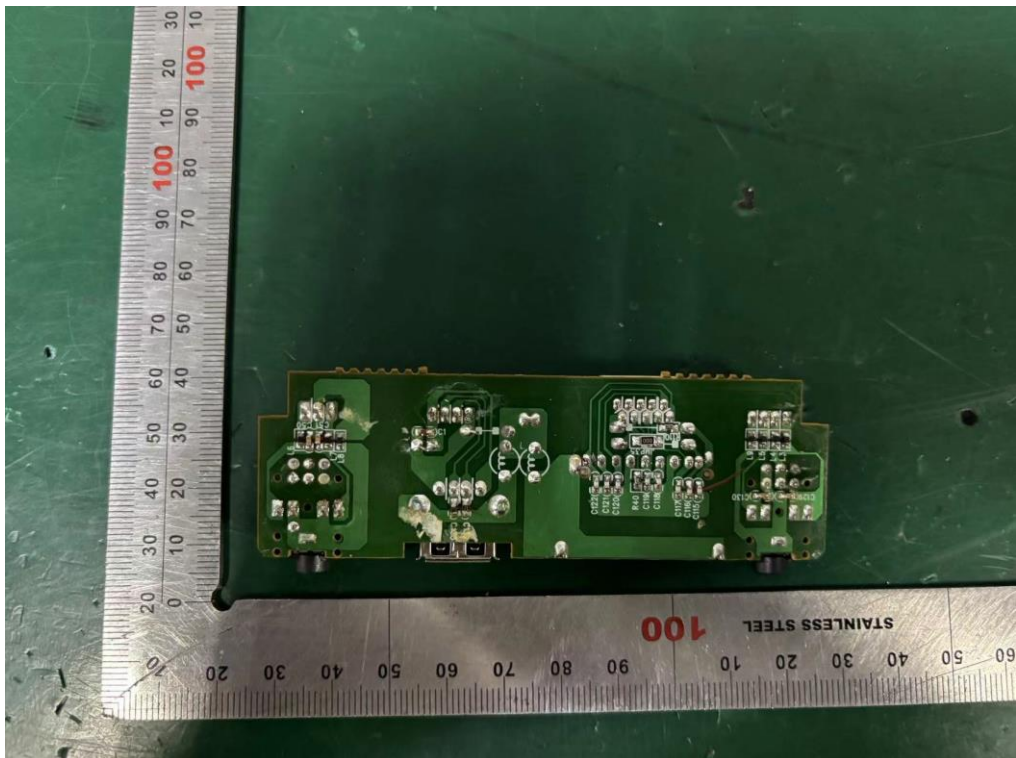
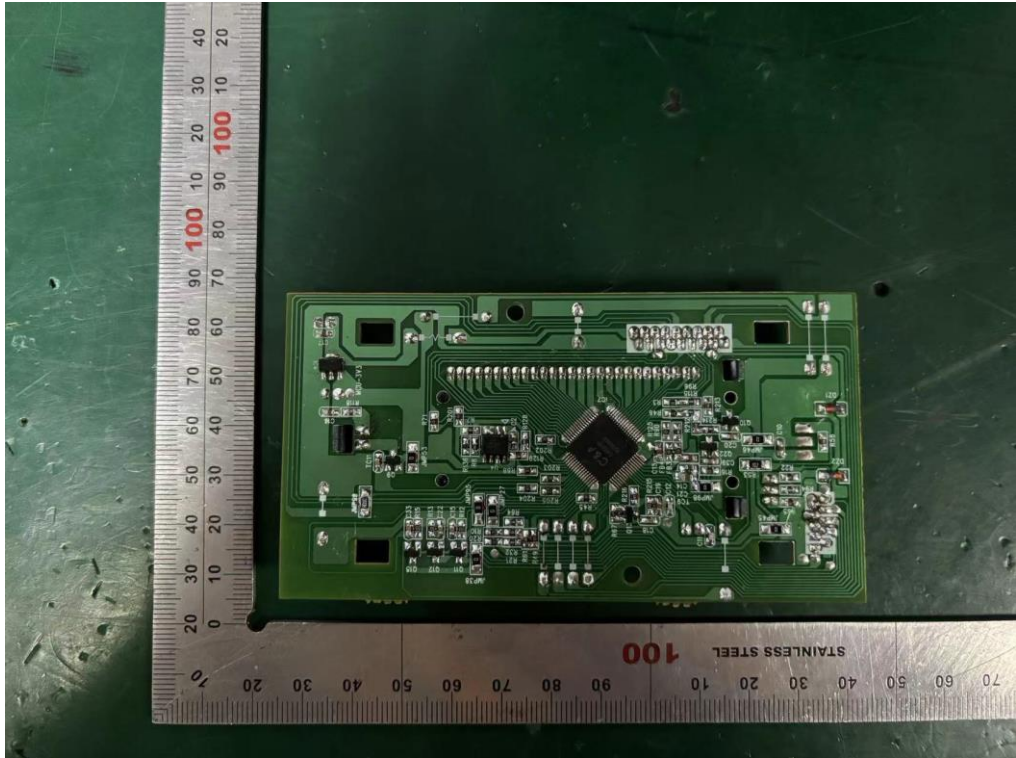
Internal Photos
M/N: CD328BT



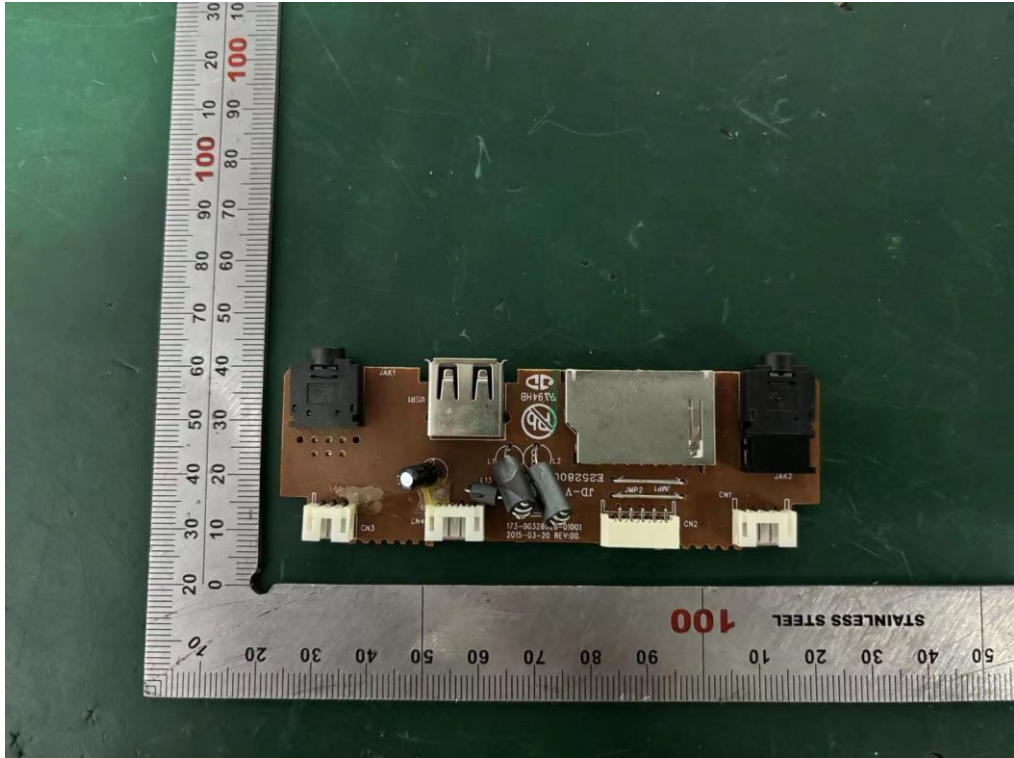
Internal Photos
M/N: CD328BT



Internal Photos
M/N: CD328BT



Internal Photos
M/N: CD328BT



End of Test Report