

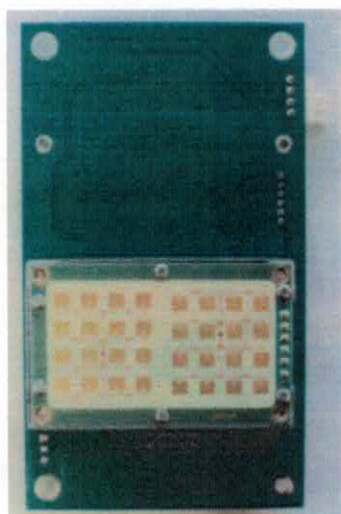
DETAILS ON SHIELDING REQUIREMENTS

This documents brings informations concerning the shielding of the ANTENNA MODULE REV1-3 board. All components on the board are separated in two parts :

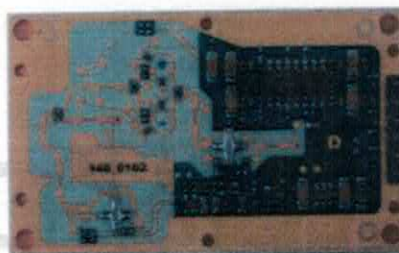
- RF circuitry
- Power and datas components.

RF CIRCUITRY :

All the RF part of the circuit is contained in one component : IPS-146F, all parts are shielded as required by FCC part 15,212. Moreover, this component is isolated on 1 of the two sides of the board.



Antenna side of the board

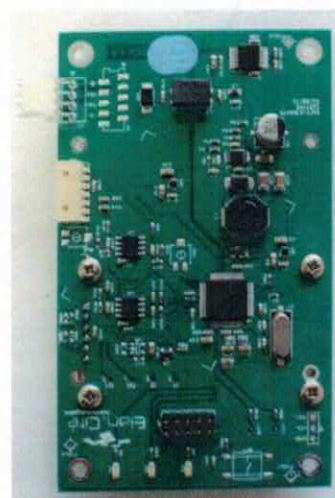


Internal photograph of the antenna with shield

POWER AND DATAS COMPONENTS :

On the other side of the board, are located all the components not concerned by RF. These components are dedicated to :

- I/O communications
- Power regulation
- Service operations, Leds.



Board side with non-RF components