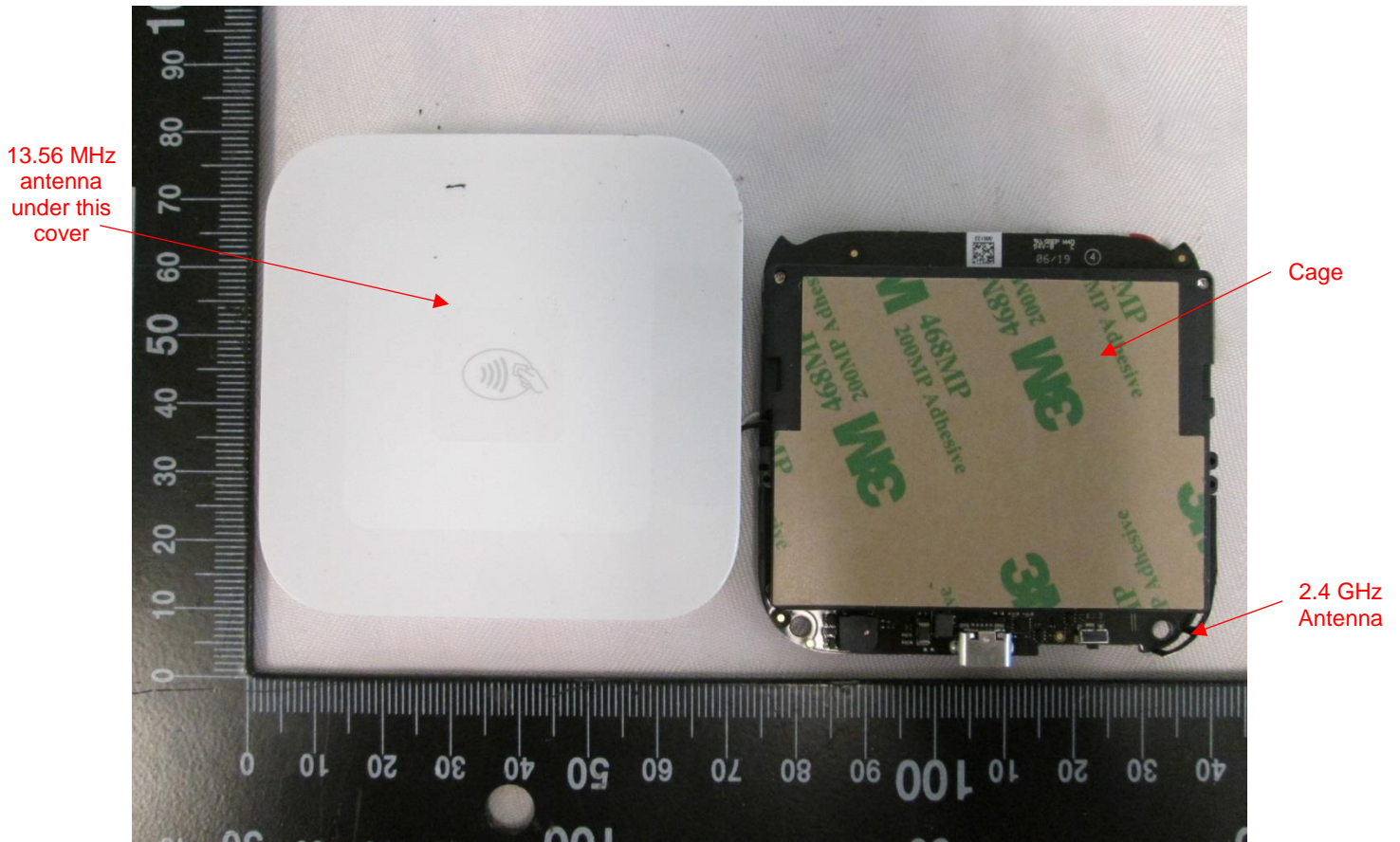
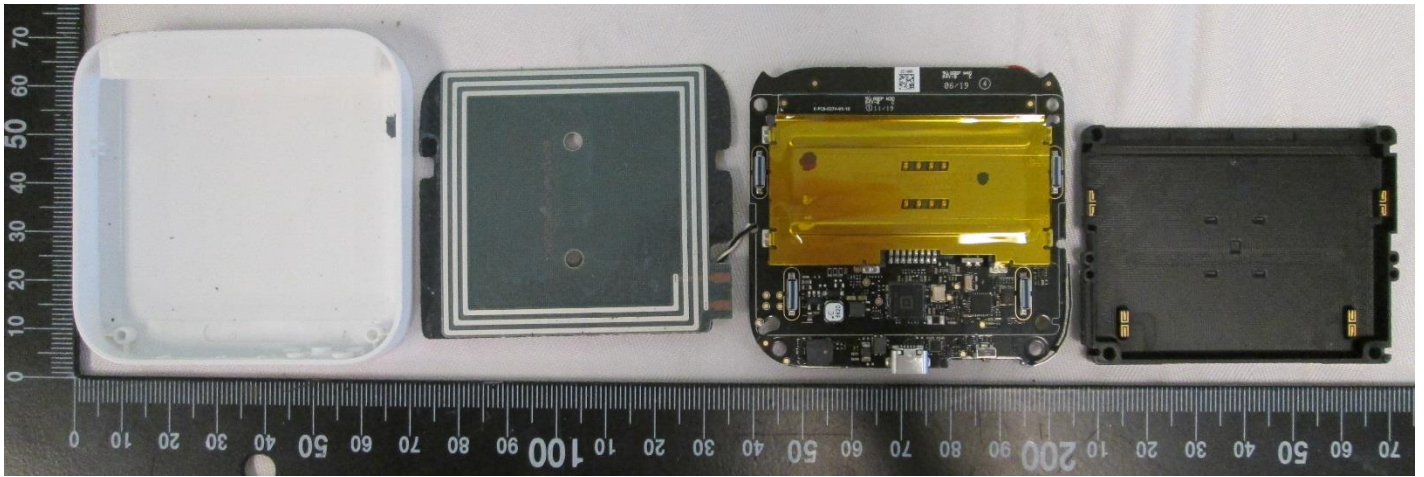


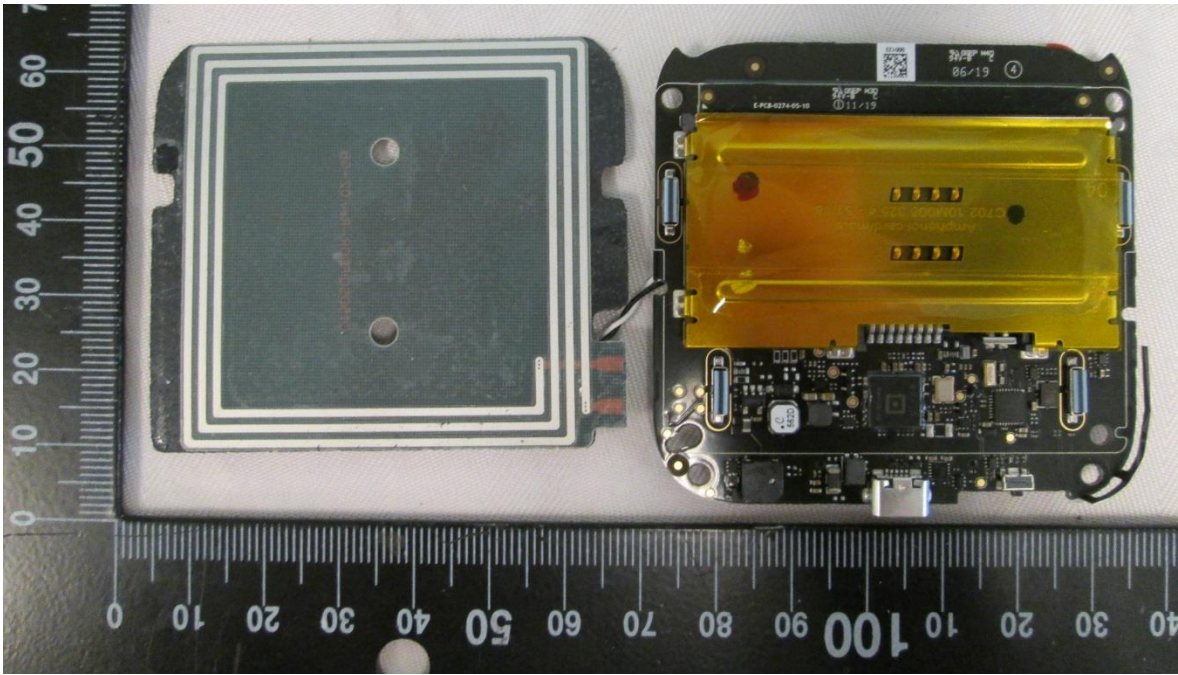
EUT – Internal view 1  
Back cover removed.



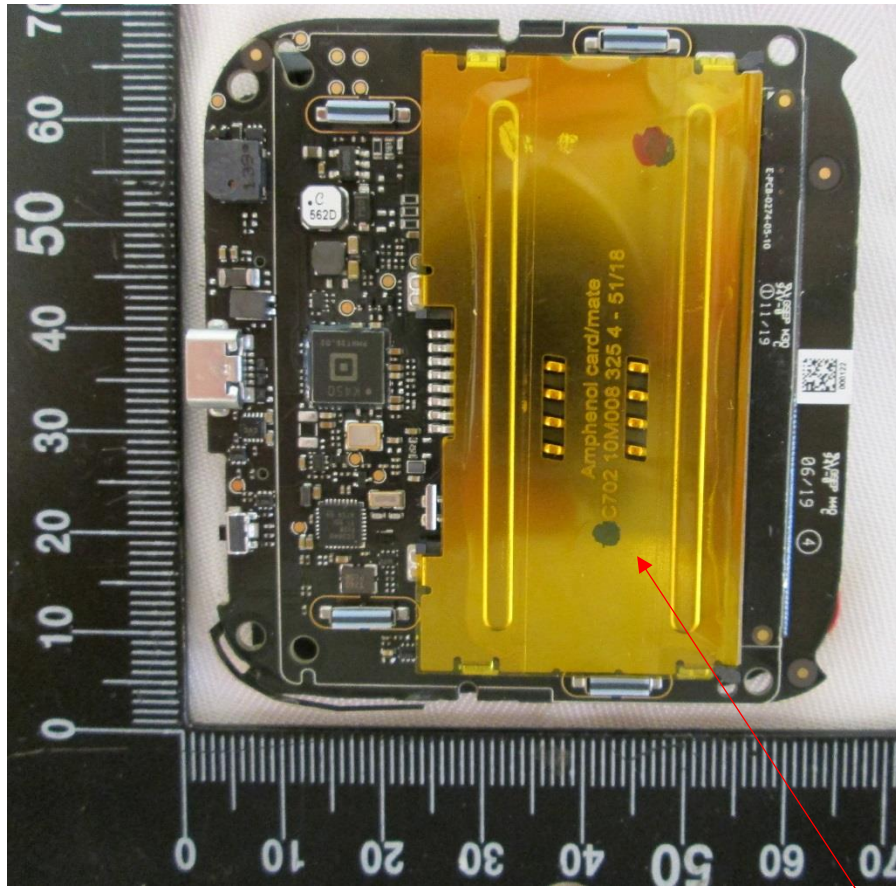
EUT – Internal view 2  
PCB removed from enclosure



EUT – Internal view 3  
Cage removed.  
Cover removed over 13.56 MHz antenna.

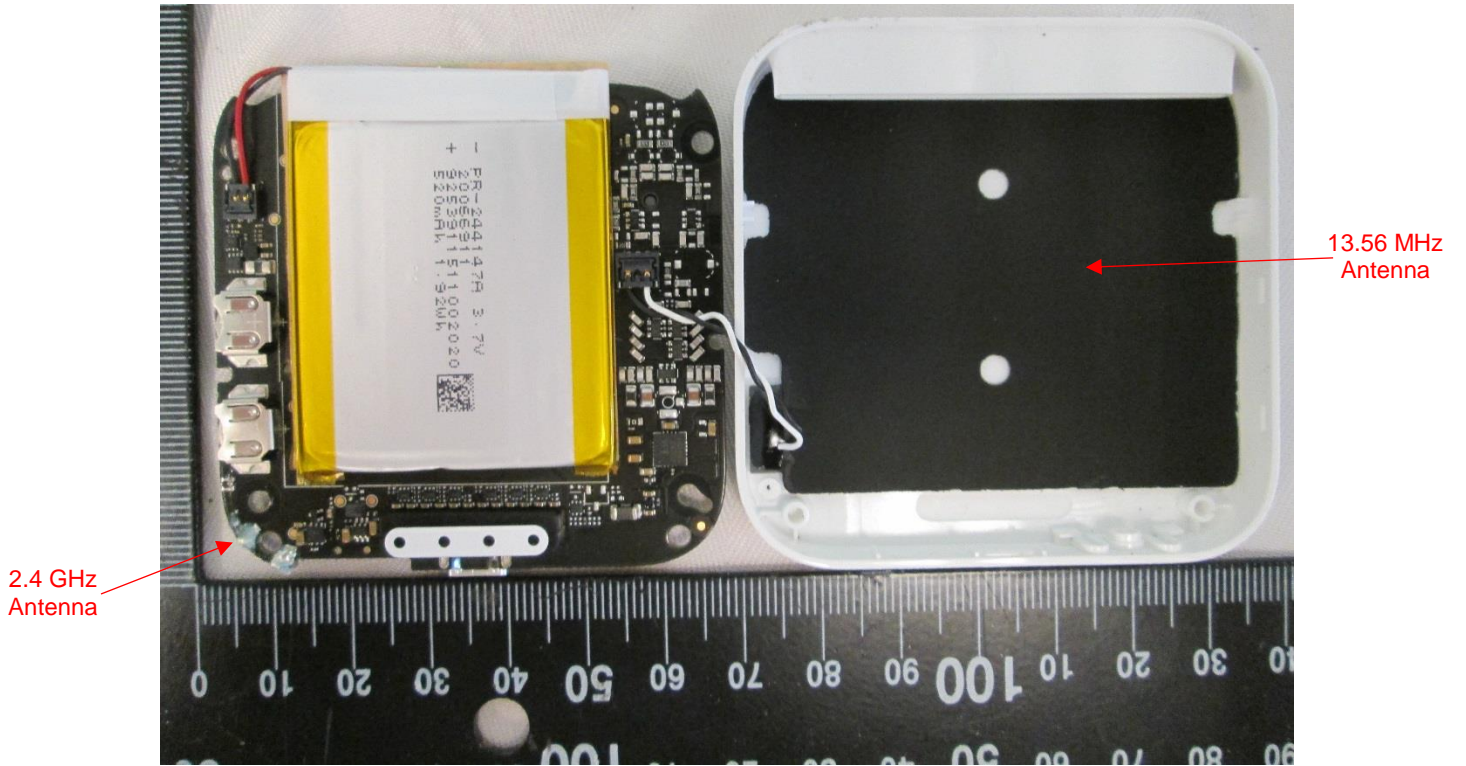


EUT – Internal view 4  
Close-up of PCB, side 1

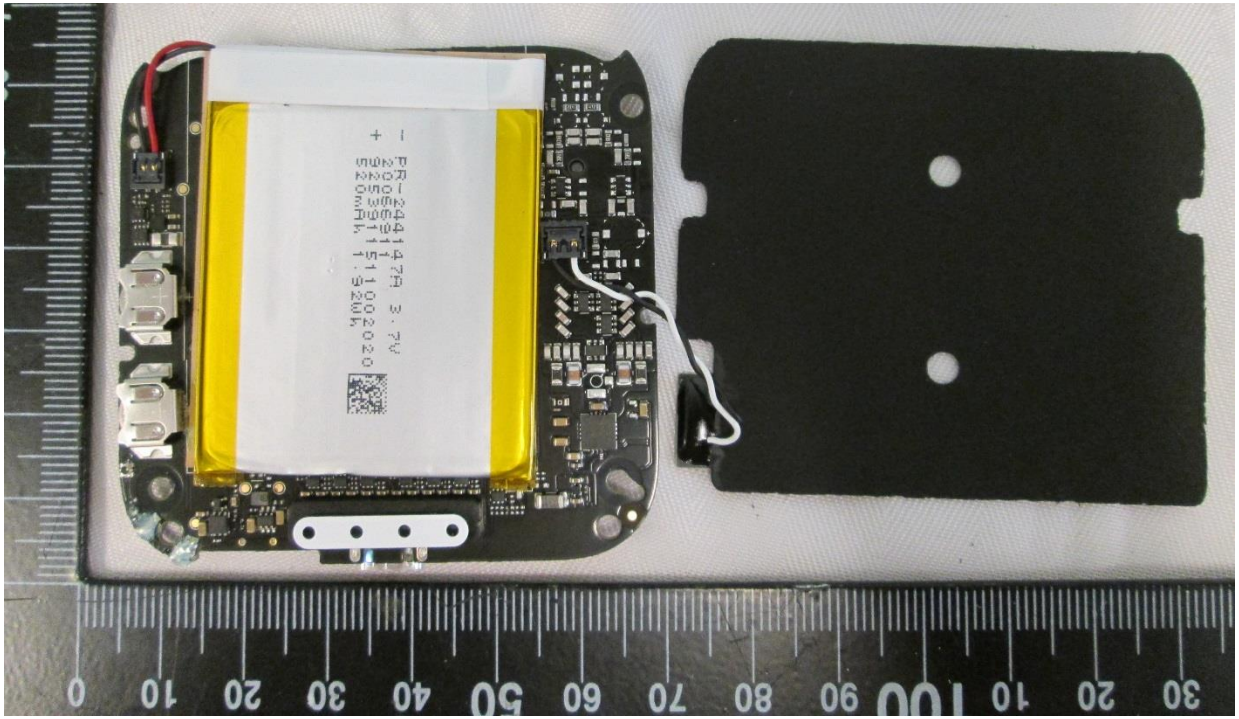


EUT – Internal view 5  
Close-up of PCB side 1, alternate view

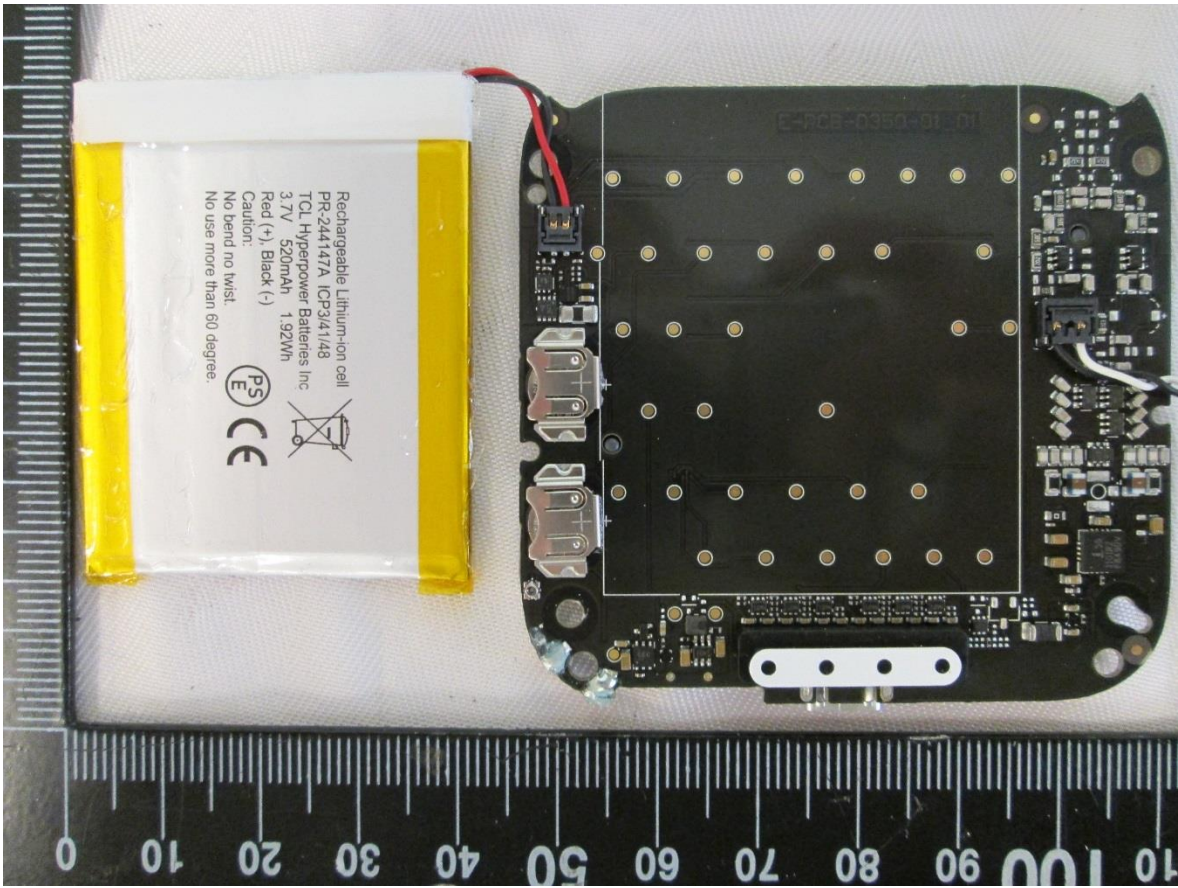
Contact card socket  
soldered directly onto the  
PCB. Not a shield. No  
components under this part.



EUT – Internal view 6  
PCB removed from enclosure and inverted  
PCB side 2 shown.



EUT – Internal view 7  
Close-up of PCB side 2.



EUT – Internal view 8  
Close-up of PCB side 2, with battery moved aside.