

EUT - Internal view 1  
Enclosure Cover removed

BLE antenna



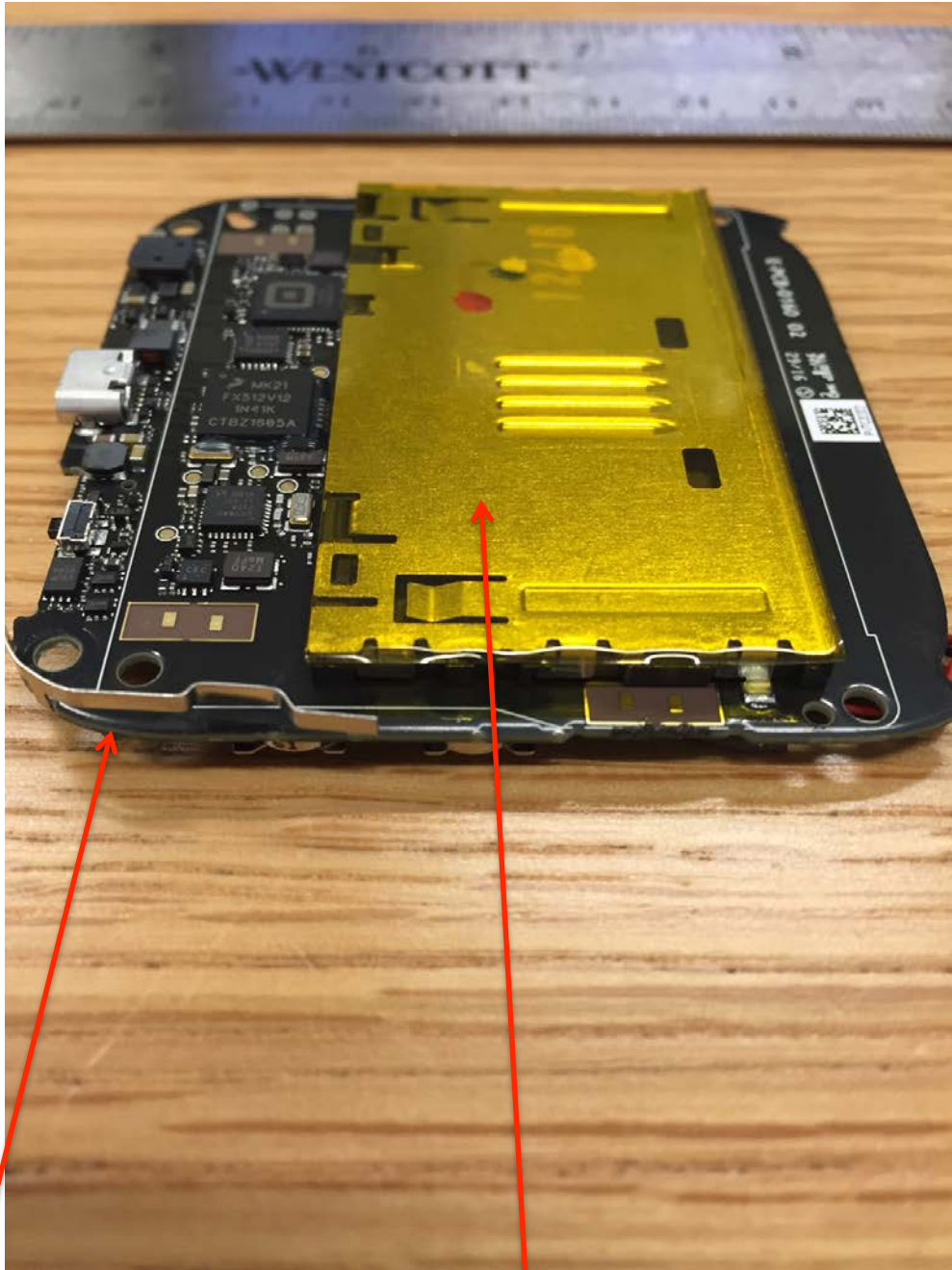
EUT – Internal view 2  
PCB, side 1, with cage



EUT - Internal view 3  
PCB, side 1, cage removed



EUT – Internal view 4  
PCB, side 1, cage removed, alternate angle



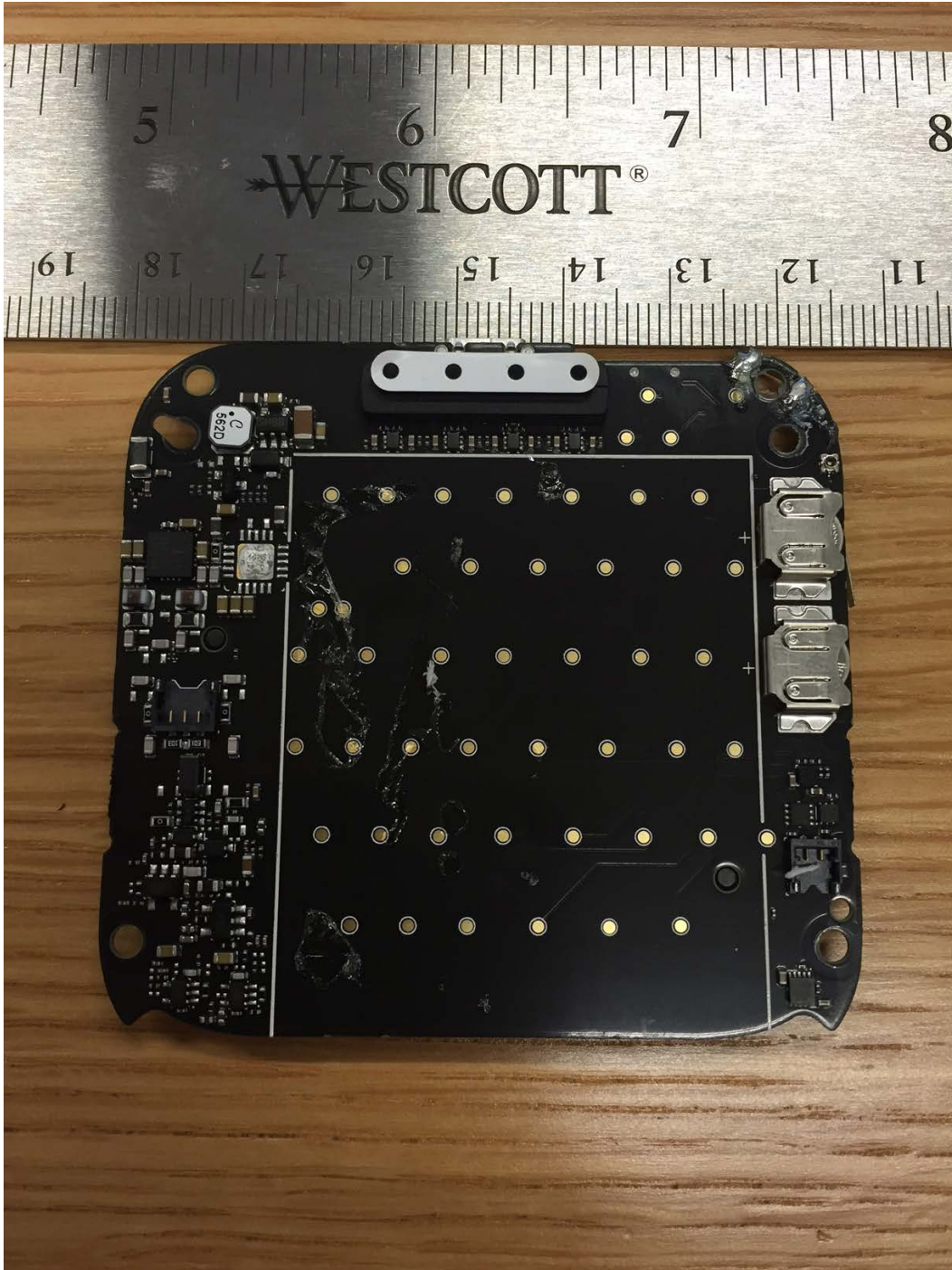
BLE antenna

Contact card socket soldered directly onto PCB. Not a shield. There are no components under this part.

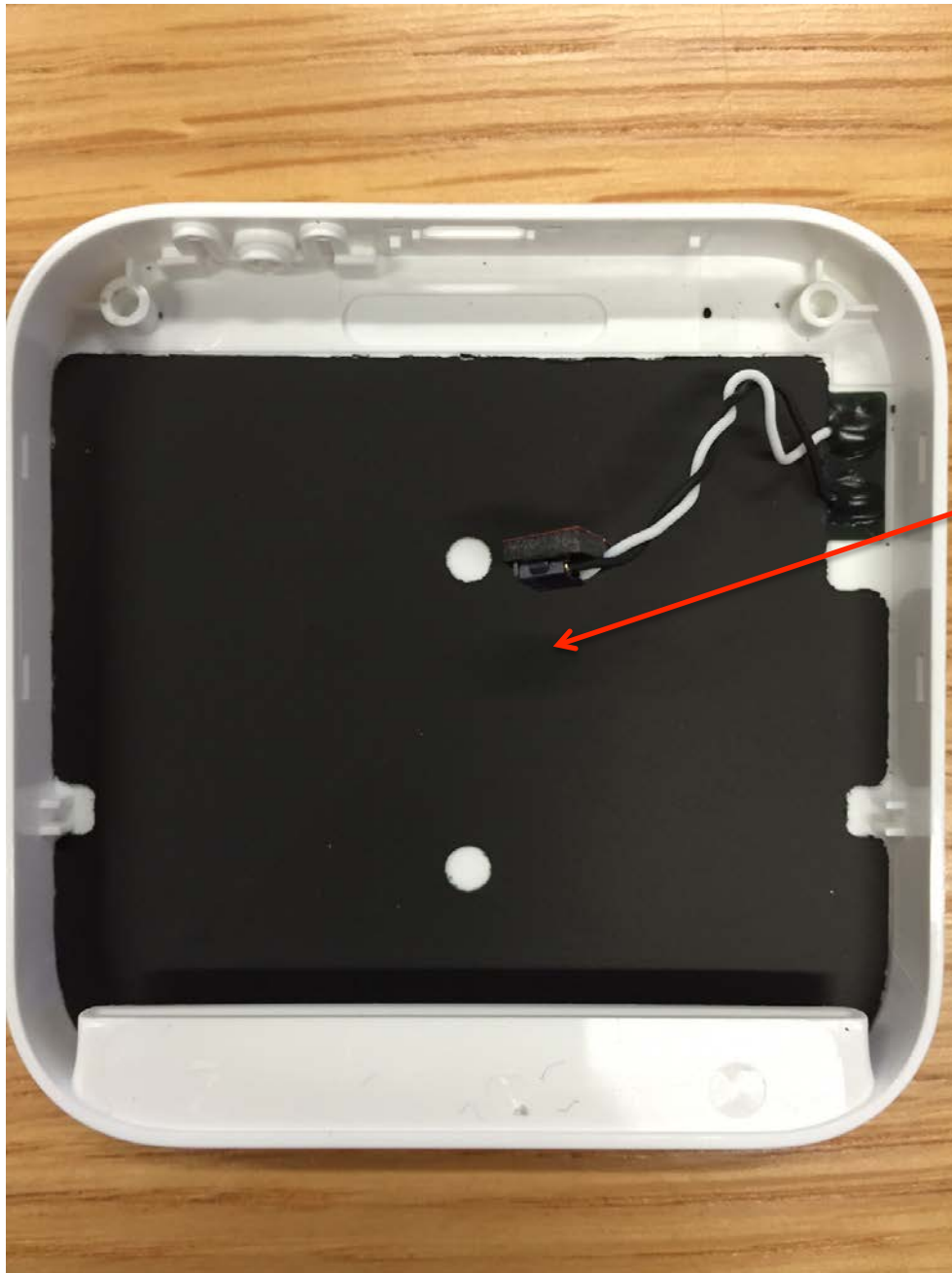
EUT – Internal view 5  
PCB, side 2, with battery in place



EUT - Internal view 6  
PCB, side 2, battery removed



EUT – Internal view 7  
NFC antenna, mounted to housing



13.56 MHz  
antenna