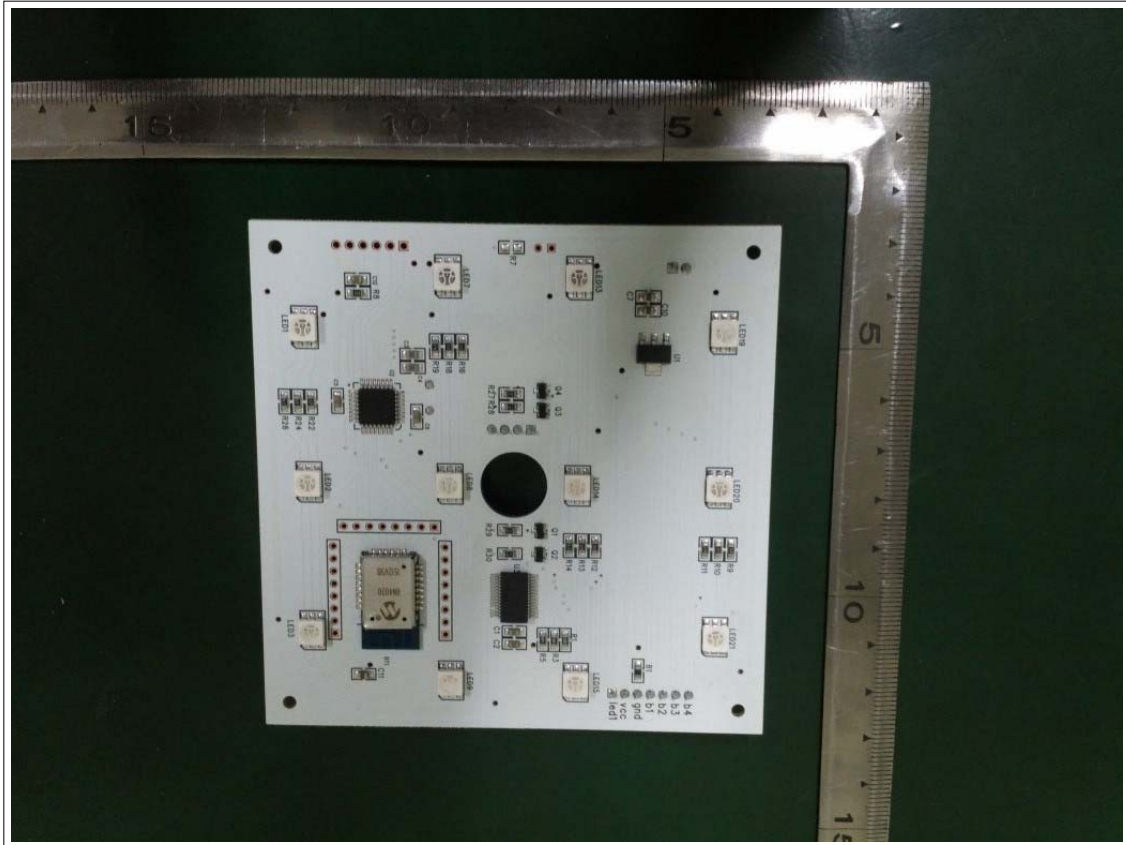


## Interior view of EUT

### Internal Photos



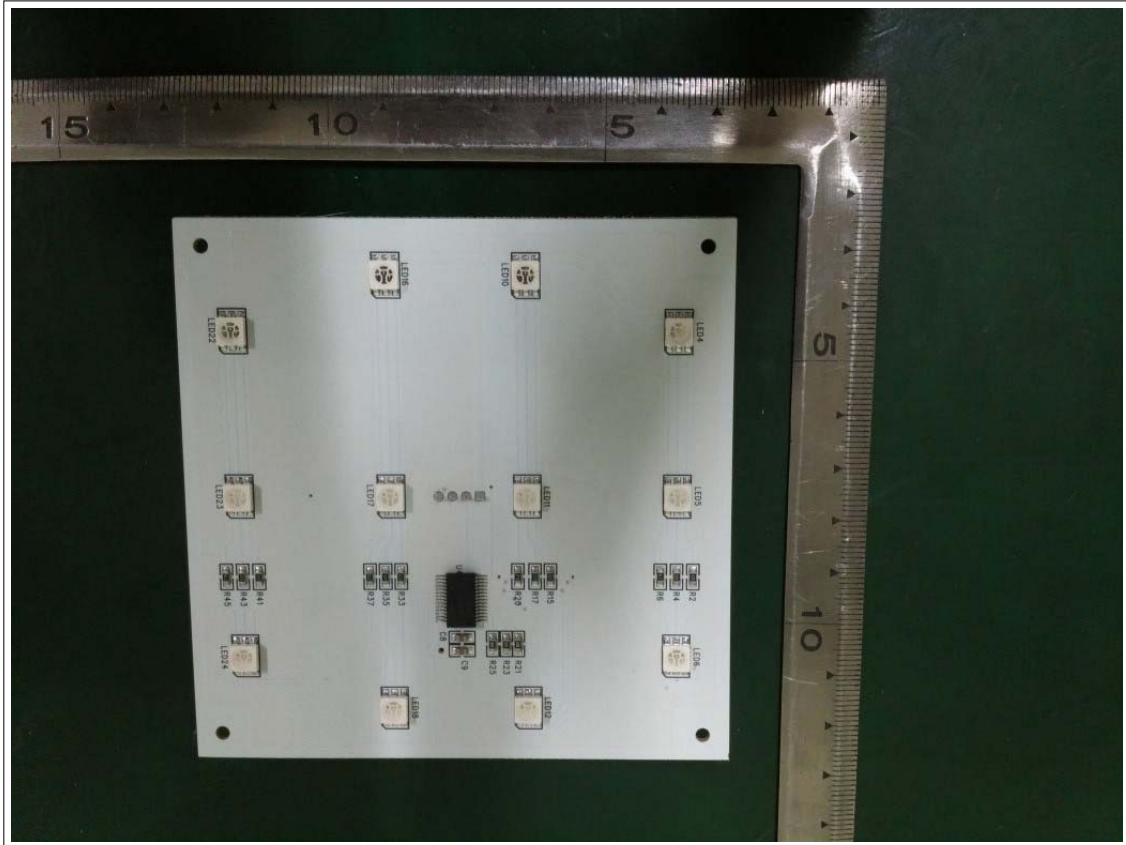
### View of Main PCB(Top)



### View of Main PCB(Bottom)



**View of Side PCB(Top)**



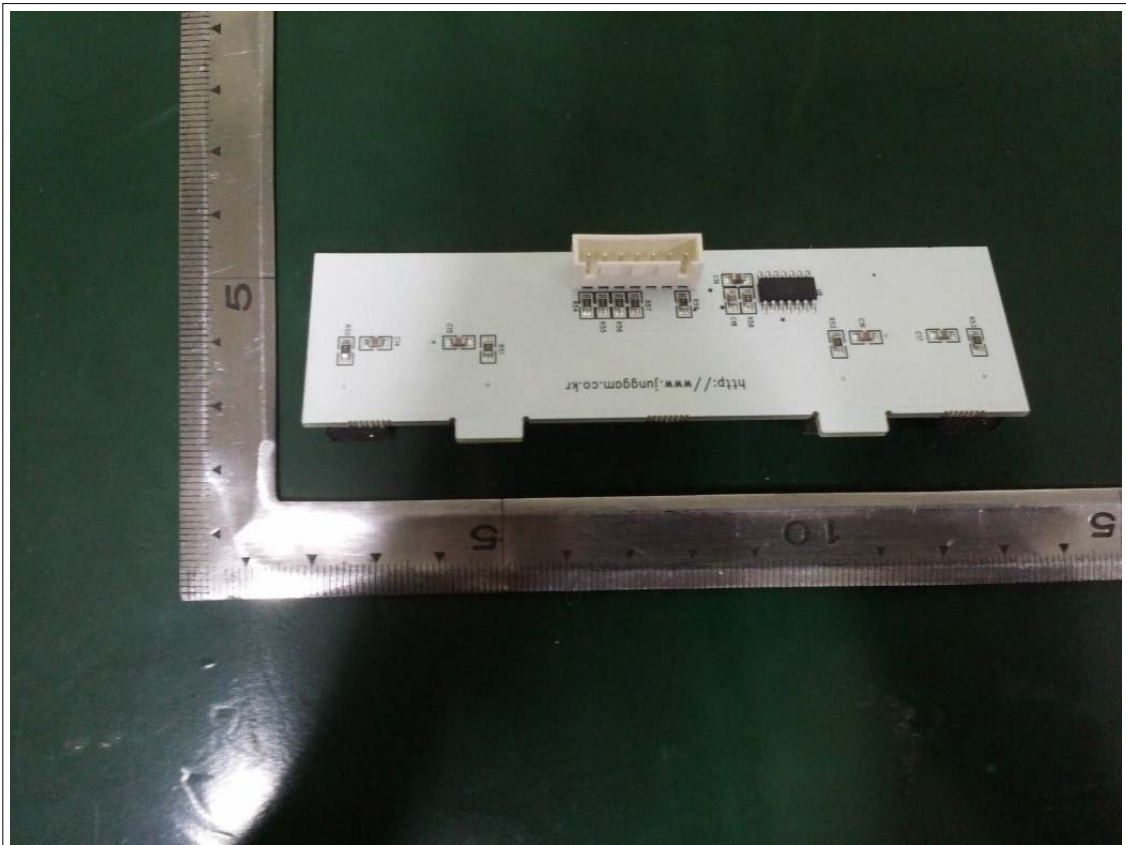
**View of Side PCB(Bottom)**



**View of Side 1 PCB(Top)**

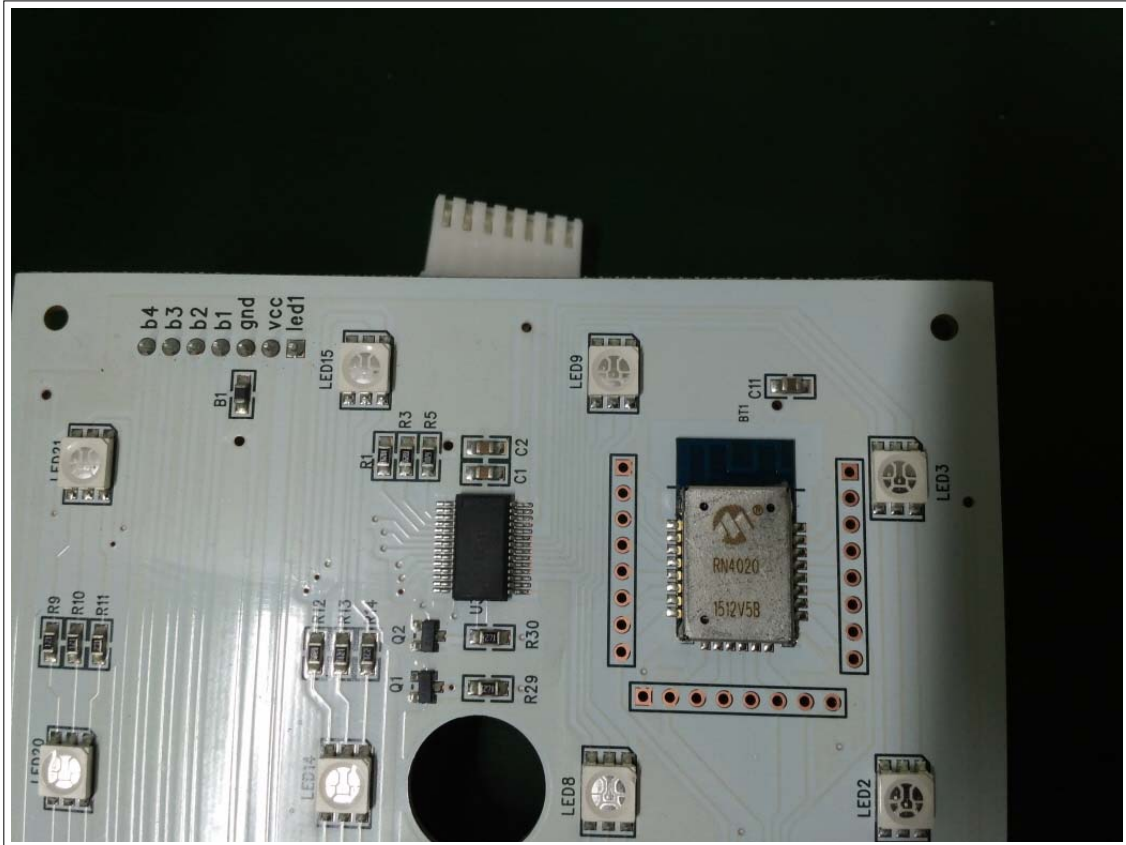


**View of Side 2 PCB(Bottom)**





**View of RF Module and Antenna**



**View of RF Module**

