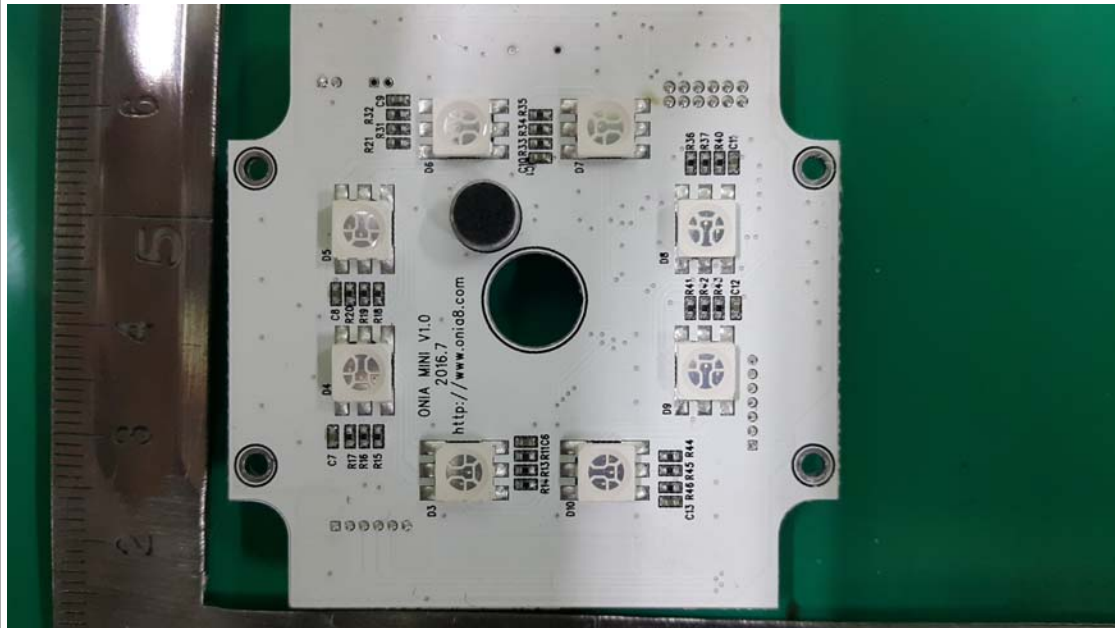


Interior view of EUT

Internal Photos



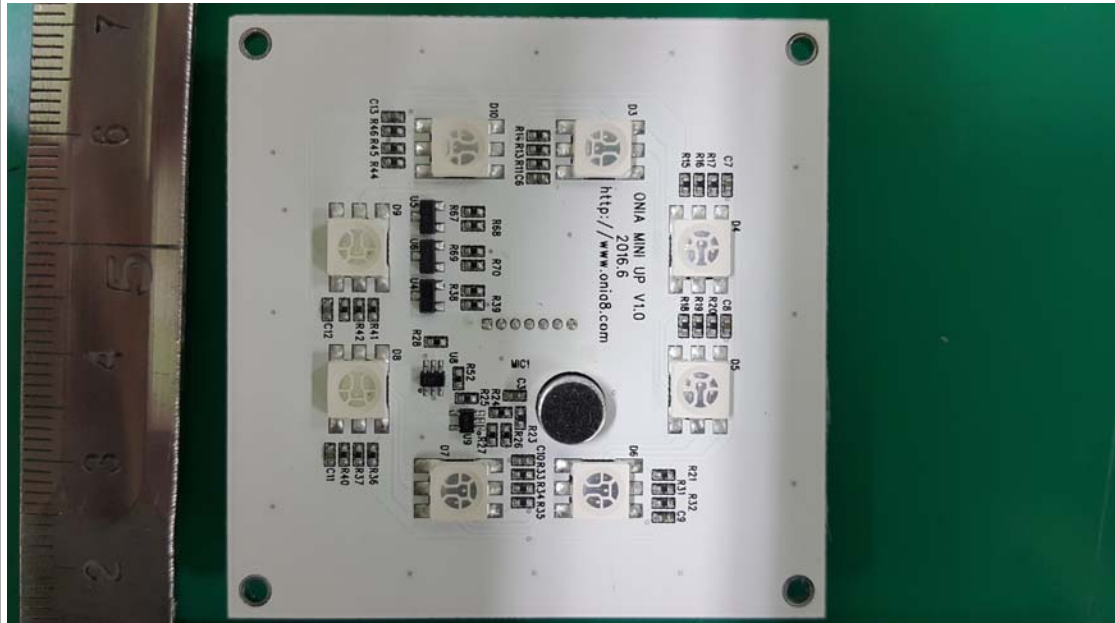
View of Main PCB(Top)



View of Main PCB(Bottom)



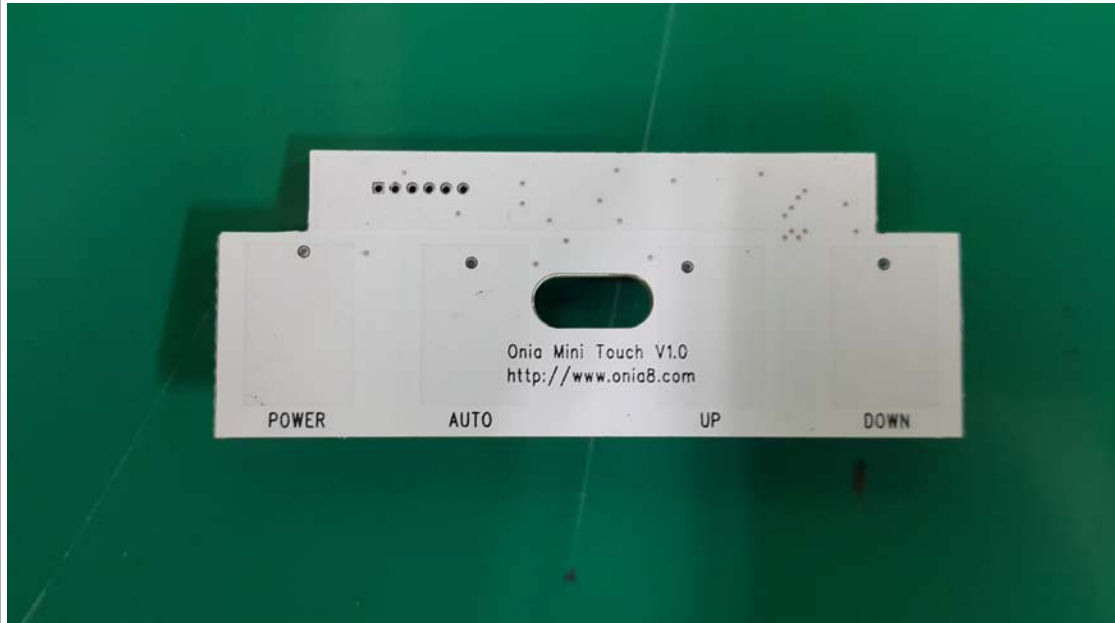
View of LED Board PCB(Top)



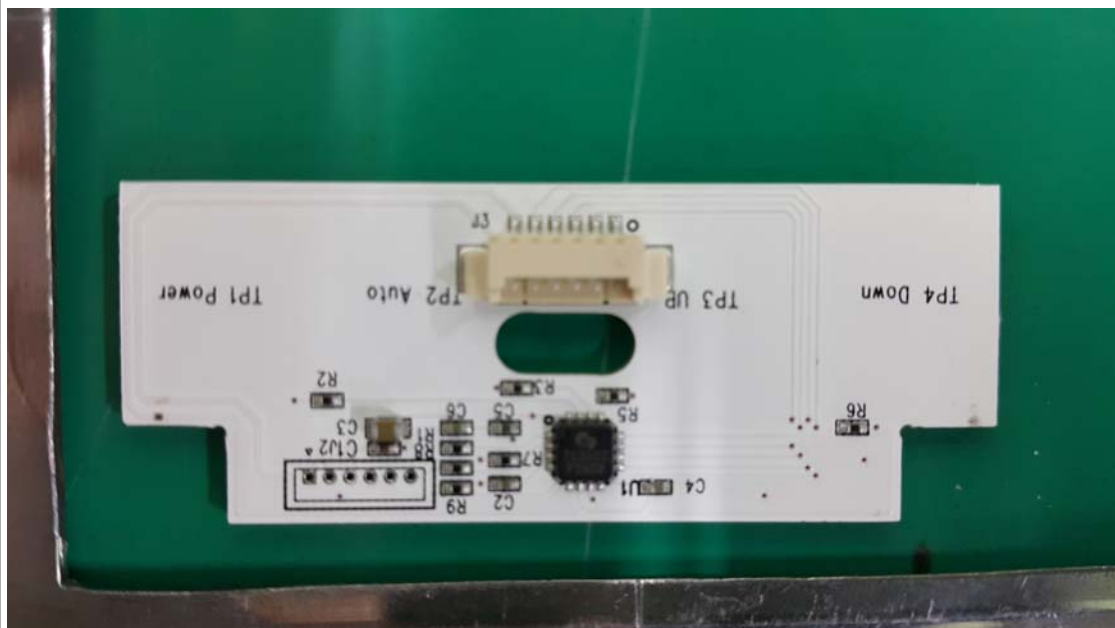
View of LED Board PCB(Bottom)



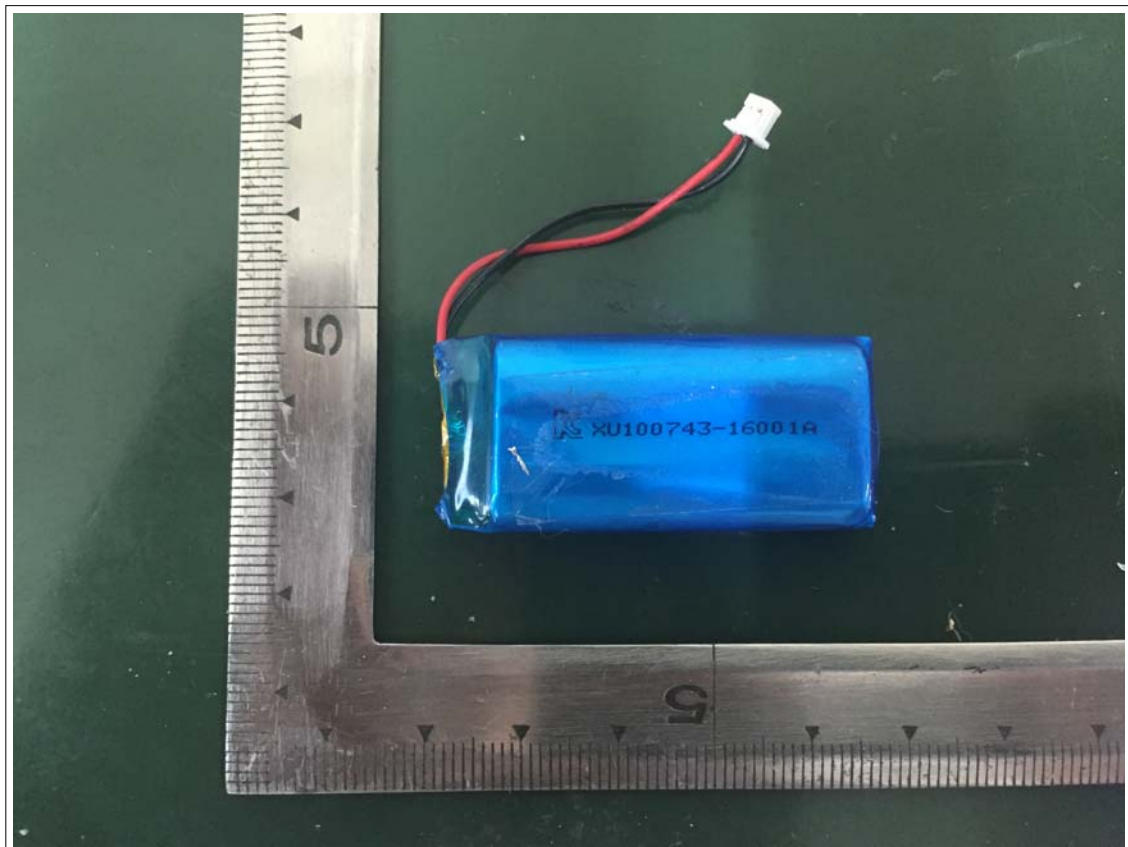
View of Touch Board PCB(Top)



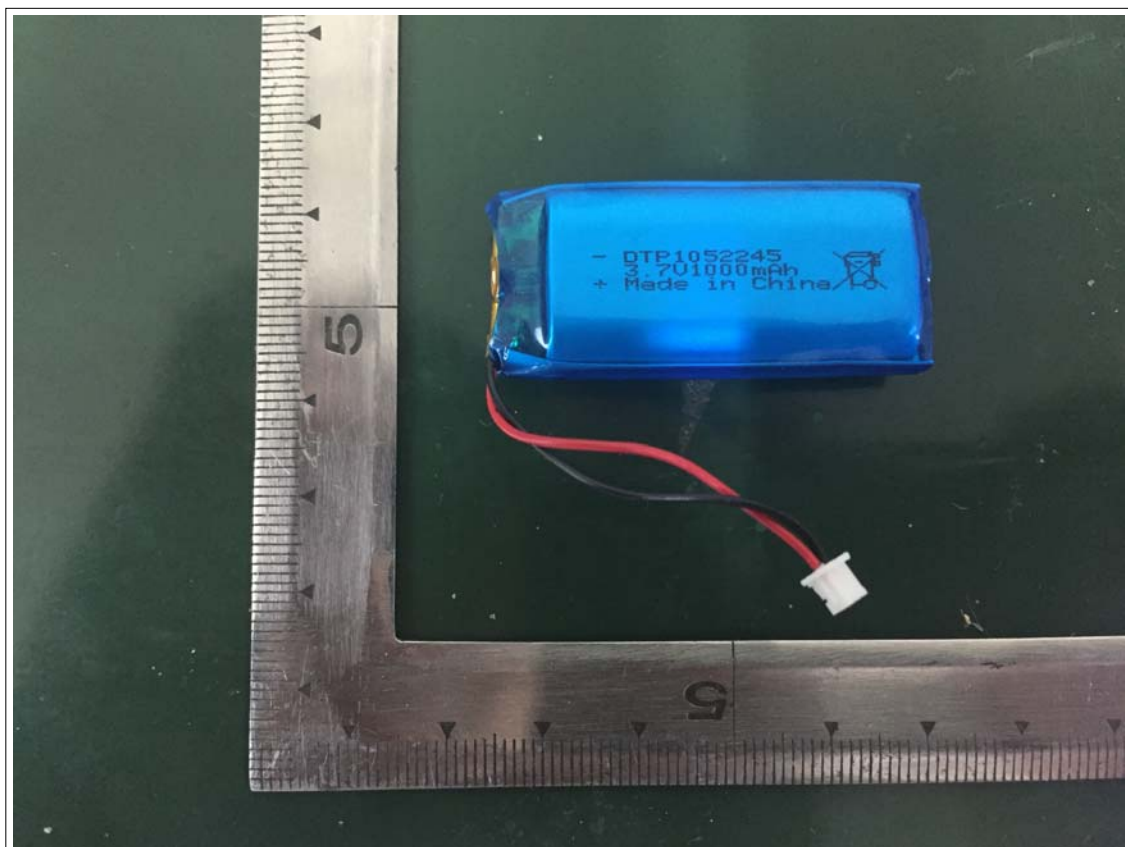
View of Touch Board PCB(Bottom)



View of Battery(Top)



View of Battery(Bottom)



View of Antenna

