

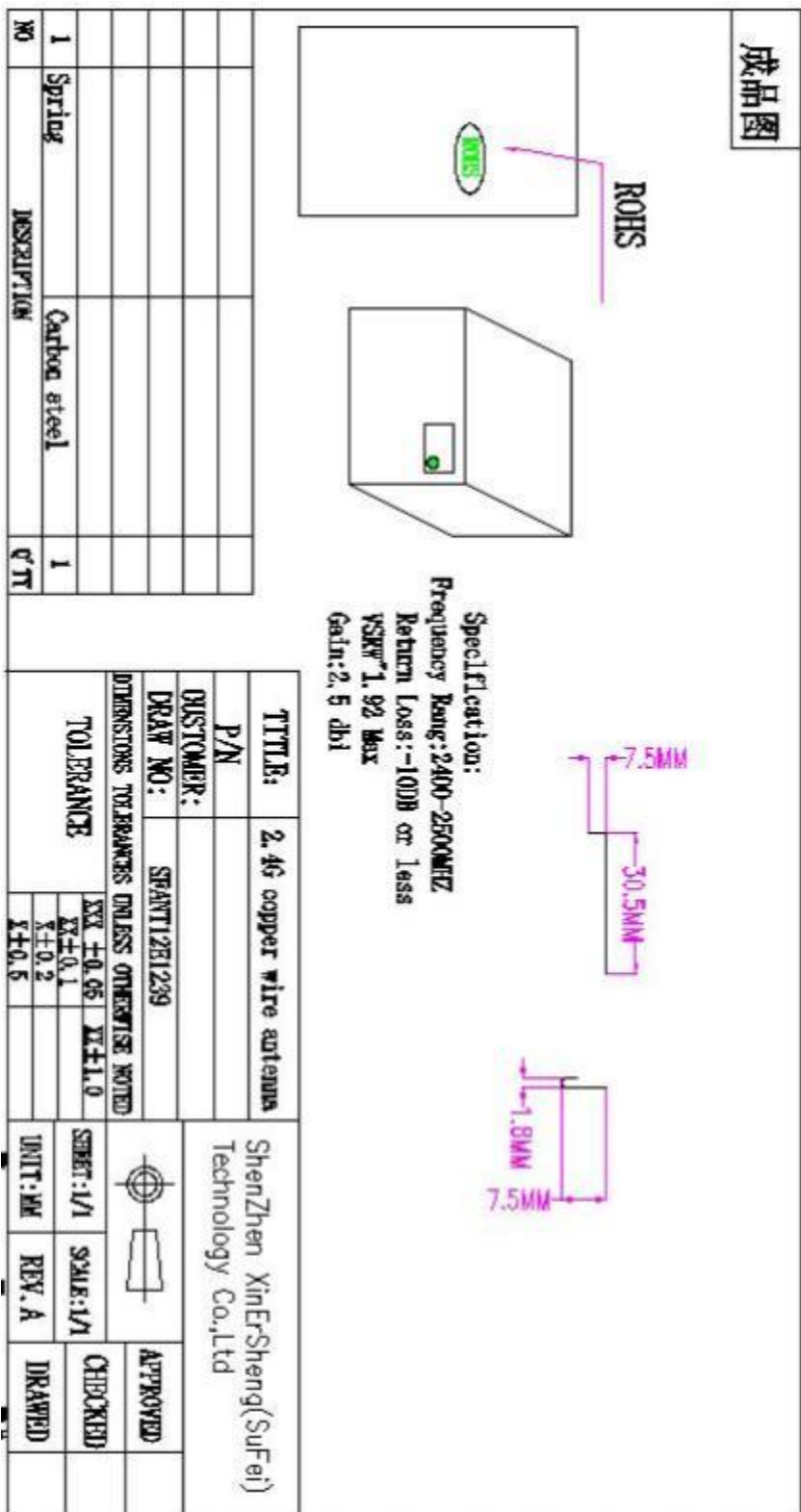
Main technical parameters of the product

Main technical specifications	
Frequency Range(MHZ)	2400-2500
Gain (dBi)	2.5±0.5dBi
Impedance(Ω)	50±10
ReTurnLoss(dB)	≤-10
VSWR	≤2
Admitted Power	1W
Polarization	Linear Vertical
Connector Type	Weld
Physical Properties	
Antenna Base	Copper
Operating Temp	-20℃-+60℃
Storage Temp	-20℃-+70℃

List of raw materials:

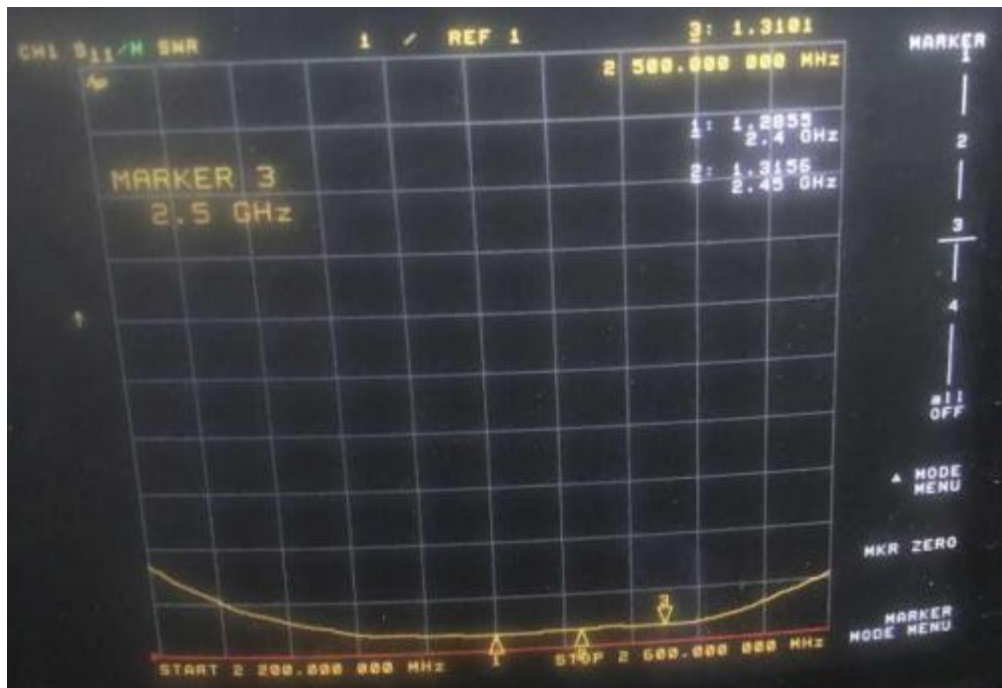
Serial number	Name	Texture	Quantity	Unit	Remark
1	Copper wire	TPE	1	PCS	

Product drawing

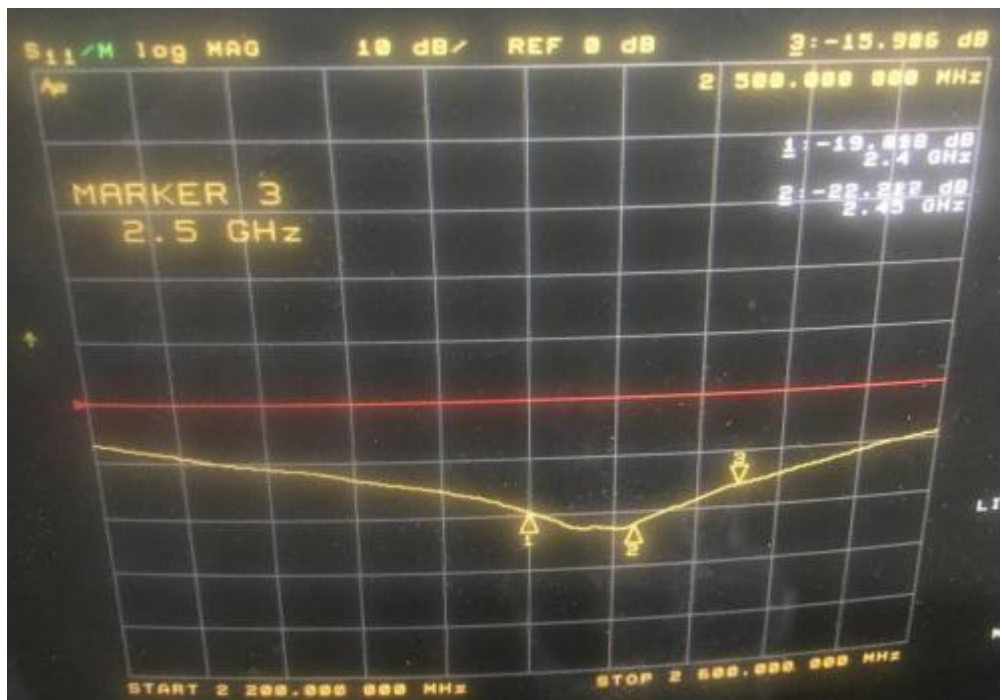


Network analyzer test report:

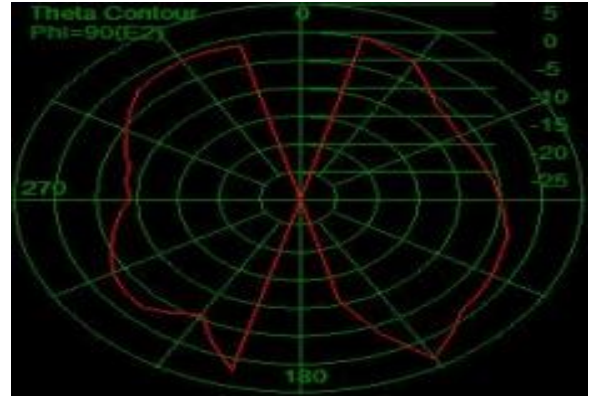
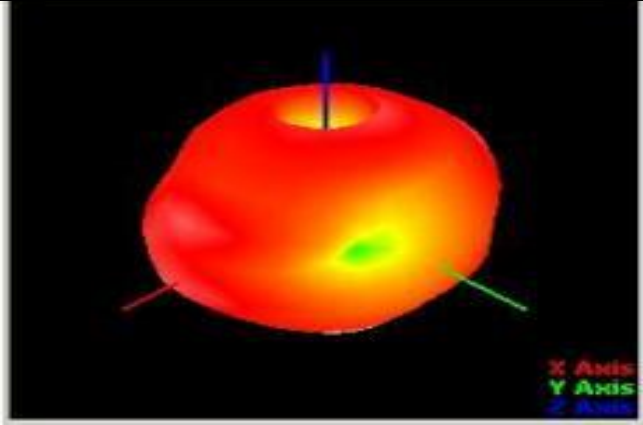
1. SWR:



2. return loss



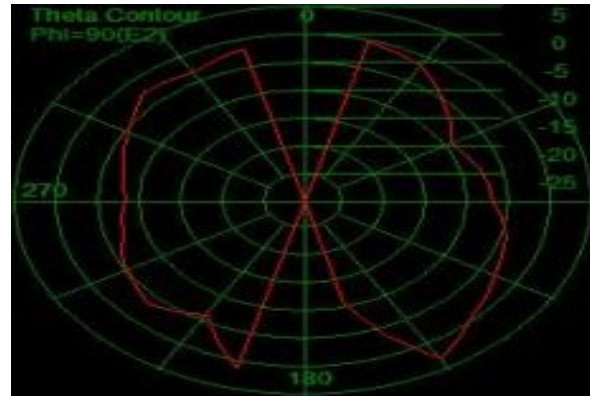
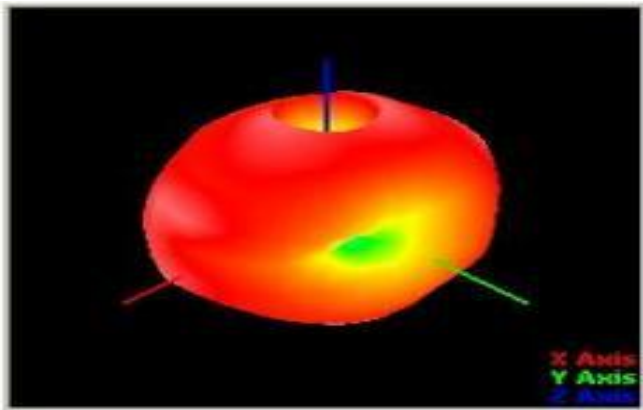
2D 、 3DRaditation Pattern



2.4G

Efficiency:56.6%

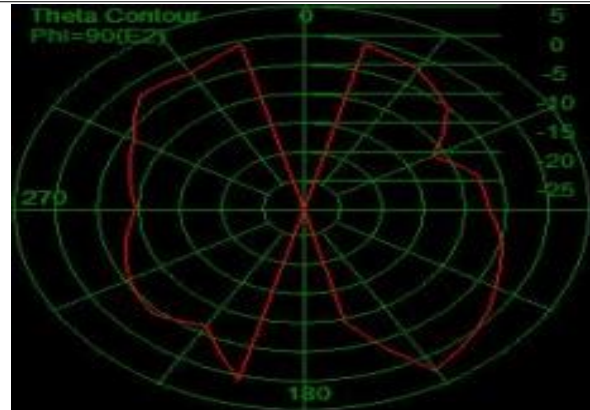
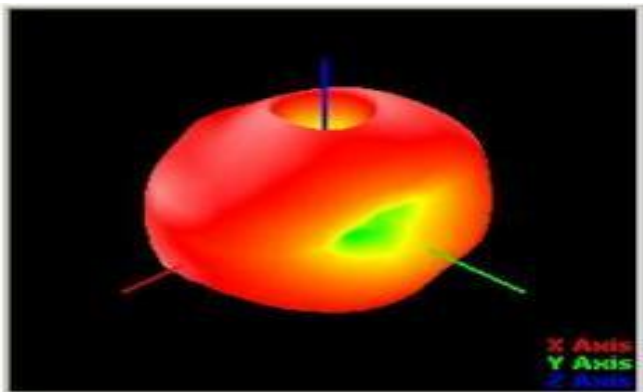
Gain(Peak):3.00dBi



2.45G

Efficiency:53.9%

Gain(Peak):2.61 dBi



2.5G

Efficiency:54.8%

Gain(Peak):2.67dBi