

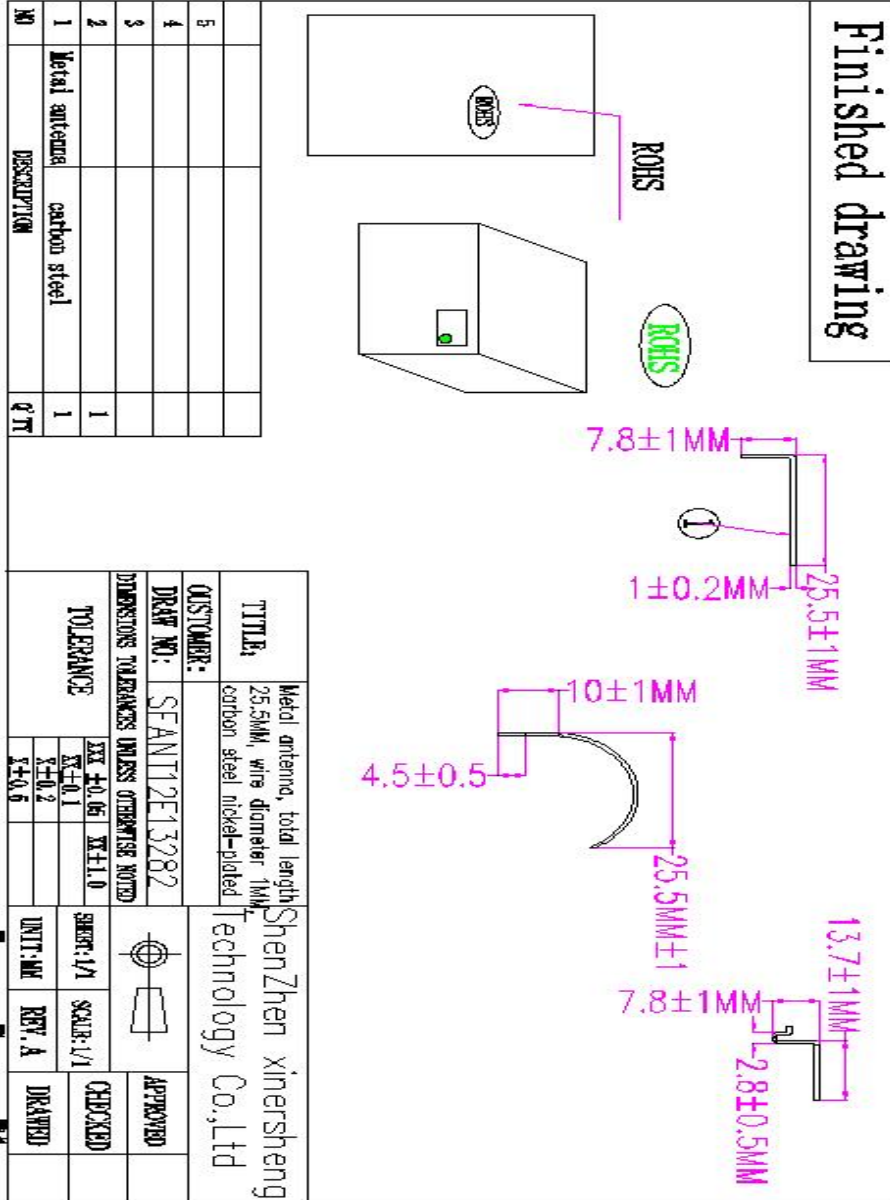
Main technical parameters of the product

Main technical specifications	
Frequency Range(MHZ)	1920-1930
Impedance(Ω)	50\pm10
Gain(dBi)	3.5
ReTurnLoss(dB)	\leq-10
VSWR	\leq2
Polarization	Linear Vertical
Connector Type	Weld
Physical Properties	
Antenna Base	Carbon steel
Operating Temp	-20$^{\circ}$C-+60$^{\circ}$C
Storage Temp	-20$^{\circ}$C-+70$^{\circ}$C

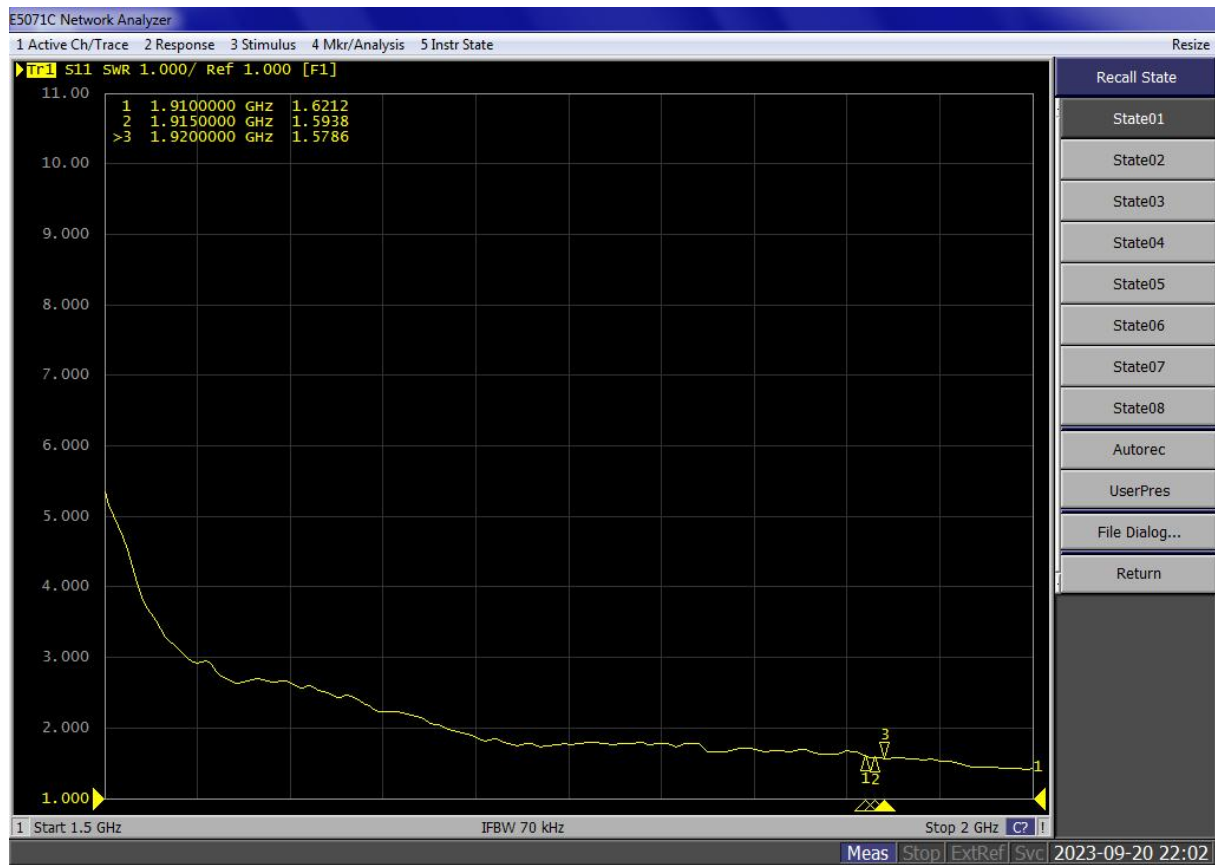
List of raw materials:

Serialnumber	Name	Texture	Quantity	Unit	Remark
1	metal	Carbon steel nickel plating	1	PCS	

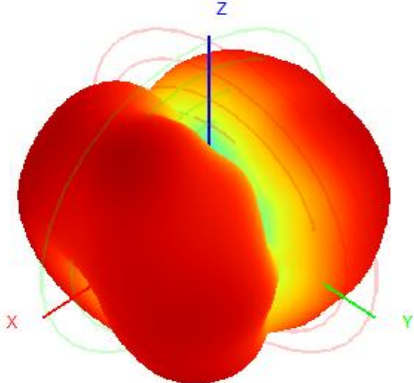
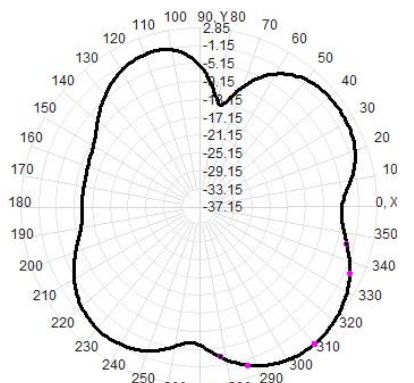
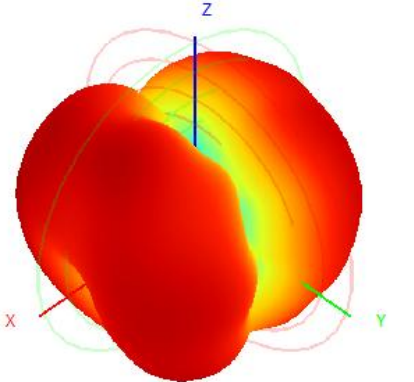
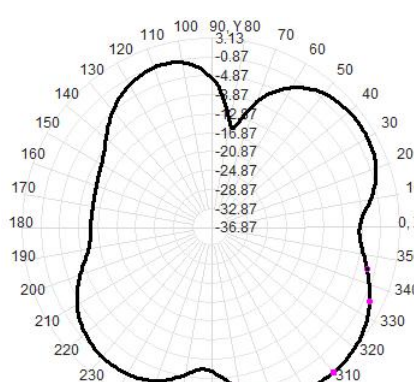
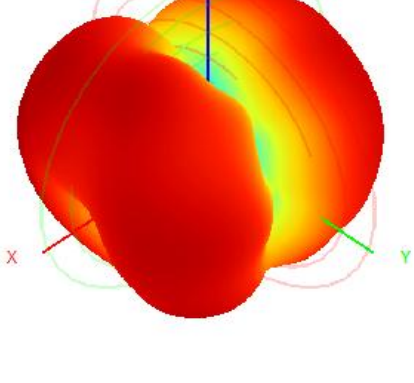
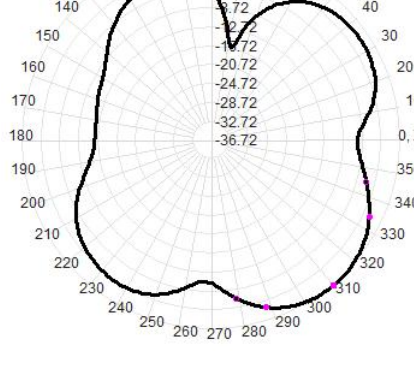
Product drawing



Network analyzer test report: 1. SWR:



2D、3DRaditation Pattern

	
<p>1920M</p>	<p>Efficiency:60.24%</p>
	
<p>1925M</p>	<p>Efficiency:61.46%</p>
	
<p>1930M</p>	<p>Efficiency:62.67%</p>