



SmartMotion™ Base  
*powered by Sleeptracker®*

# Owner's Manual

---

## SmartMotion™ Base 3.0



**Disclaimers** .....1-2

**Parts List** ..... 3

**Base Overview** ..... 4

**Quick Reference Guide** ..... 5

**Installation Guide** ..... 6-7

**Remote Control** ..... 8-9

**Headboard Bracket Installation Guide** ..... 10

**Magnet and USB** ..... 11

**Emergency Power Down Box** ..... 12

**Pair Remote** ..... 13

**Setting Up Two Bases** ..... 14

**Syncing Two Bases** ..... 15

**Sleeptracker® Setup** ..... 16-17

**Troubleshooting** ..... 18

**Notes** ..... 19

**Español** ..... 28-34

**Français** ..... 35-41

**Important Safety Information**

Read all instructions before using your adjustable base. Save these instructions.

**⚠ WARNING**

Always unplug the base from the electrical outlet before servicing any part of the base. To reduce risk of electric shock, unplug the base before cleaning. To safely disconnect, ensure the base is in a flat position with all motors off, and unplug from power source.

**⚠ WARNING**

For optimal safety and operation, plug bed base into a surge protector (not included). The bed base should only be plugged directly into a grounded wall outlet or surge protector (strongly recommended). Improper connection of the equipment can result in the risk of electrical shock, electrical fire or faulty operation of this bed base. If the plug does not fit your outlet, contact a qualified Electrician to install a suitable outlet.

**SAFETY**

**TO REDUCE THE RISK OF SHOCK, BURNS, FIRE OR INJURY:**

- Keep the power cord away from heated surfaces. Never operate the base when the air openings are blocked. Keep air openings free of lint, hair and the like. Do not drop or insert any object into any opening.
- Discontinue use of the bed base and contact a qualified service center if: it has a damaged cord or plug, if it is not working properly, or it has been dropped into water.
- Only use this bed base for its intended use as described in this manual.
- Do not use accessories/attachments that are not recommended by the manufacturer.
- Unauthorized modification or failure to use a wall outlet or surge protector could void the electrical portion of your warranty.

**ADDITIONAL SAFETY FEATURES**

Casters (optional leg accessory) are equipped with locking wheels to prevent unwanted movement. Even when locked and unable to roll, it is possible for the casters to slide. Free release head and foot motors are designed to lower the mattress by retracting only with gravity, never pulling downwards, which minimizes pinch points.

**ACOUSTICS**

**LIFTING/LOWERING MECHANISMS**

The lift/lower feature will emit a minimal humming sound during operation. This is normal. During operation, the lift arm wheels make contact with the platform support of the base. This contact may result in metal on metal or metal on plastic contact. This applies slight tension on the moving components and resonance is reduced to a minimum level. If excessive noise or vibration is experienced, reverse the movement action (up or down) of the base with the remote control. This should realign the base's activating mechanisms to the proper operational position. In normal base operation, the wheels which allow the bed to maintain its distance from the wall, will make contact with the steel platform supports of the base creating a contact noise. When entering, exiting or shifting weight on the base, this contact noise may be audible as the wheels make contact. This is normal.

**MATERIALS**

Ergomotion adjustable bases are constructed from various materials including woods, metals, plastics and fabrics. Tension, pressure or movement applied to the frame, platform or shroud through general use may create an audible sound.

**MESSAGE OPERATION AND LOCATION ENVIRONMENT**

The massage feature will emit a tone during operation. This is normal. As the massage intensity level is increased, the tone will intensify. The volume of this tone is directly related to the location environment. For example, when demonstrated in a show room, the surrounding environmental noise will cover some of the massage noise. However, when installed in a home setting with wooden floors, carpeted or not, the massage volume will be more noticeable. To minimize this resonance, place a piece of carpet, or rubber caster cups, under each leg or caster of the base. It is possible to experience vibration or noise from the exterior bed frame, headboard brackets, headboards or footboards if mounting bolts are not firmly tightened. Levels 1-6 of massage intensity represent the revolutions of the motor per minute. Level 6 provides the maximum number of RPMs. However, this does not mean that the feeling of vibration is the strongest. Depending on the mattress material, thickness, and positioning of the user, the feeling of vibrations will differ. We encourage the user to find the massage intensity setting that suits them best. It is important to understand the physics of vibrations. Just as an engine may run rough during idle, as the RPMs increase, the vibrations change concurrently.

**⚠ WARNING**

- Keep bed in a flat position when not in use.
- Stay clear of moving parts while in motion.
- Before adjusting, make sure children and pets are clear of moving parts and are not under bed base.
- Do not allow children to operate bed base without adult supervision

**PETS AND CHILDREN:**

Immediately dispose of all packing materials as it may pose a smothering risk to small children and pets. To avoid injury, do not allow children and small pets to play on or under the bed. Children should not operate the bed base without adult supervision.

**PACEMAKERS:**

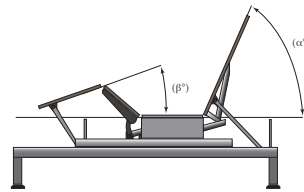
Some products contain Neodymium MAGNETS which may interfere with devices such as pacemakers, ICD's and any other device sensitive to magnetic fields. It is STRONGLY recommended that owners of such medical devices consult their physician prior to using products that contain Neodymium MAGNETS. It is also possible that some pacemakers may falsely interpret the optional massage feature vibrations as movement/exercise. This is a common occurrence with any product that creates a vibrating movement and may not affect the pacemaker. Please consult your physician before using the massage feature.

**IN-HOME USE AND HOSPITAL STANDARDS:**

Ergomotion adjustable bed bases are designed solely for in-home use. This base was not designed as a hospital bed and is not designed to meet hospital standards. Do not use this base with TENT TYPE oxygen therapy equipment or near explosive gases.

## TOLERANCE

All Ergomotion adjustable foundations, depending on make and model, are designed and manufactured to perform and function within designated quality control parameters. Bases are subject to meticulous and rigorous inspections during the quality control process to ensure bases will operate within these standards during normal operating use. Normal operating use is defined as the following: Adjustable foundation is to be operated with a mattress and load. Testing procedures require lifetime cycle tests with up to 120kg distributed load. The angle (designated "a" in figure 1) between the back section and the flat section for various configurations of the mattress support platform shall be  $\pm 3^\circ$ , which translates to a tolerance of up to 1 1/2".



The angle (designated "B" in figure 1) between the flat section and foot section for various configurations of the mattress support platform shall be  $\pm 3^\circ$ , which translates to a tolerance of up to 3/4".

Any adjustable foundation deemed to be within these allocated tolerances is considered to have met the manufacturer's quality control standards.

## THAT "NEW PRODUCT" SMELL:

Some people notice a slight odor to their new adjustable base—this can come from our material manufacturing process. This smell is normal and usually disappears before the product reaches you. Sometimes, however, this smell may still be noticeable. It usually disappears after a few weeks, providing adequate ventilation of the product and the environment.

## BREAK IN PERIOD:

You can speed up the break-in period by simply spending time in the adjustable bed through activities such as reading, watching TV or playing with the kids or grandkids. The extra movement will help the adjustable base respond to weight and temperature changes. Some of the materials in our adjustable bases such as the woods, metals and plastics used in the platform, frame and components are sensitive to moisture content and temperature and may make sounds in colder environments.

## PAIRED OPERATION:

When operating a "paired" split base setup there may be a time latency up to 1.5 seconds between each bases articulation.

## WEAR AND TEAR:

Wear and tear is damage that naturally and inevitably occurs as a result of normal use or aging.

## FABRIC CARE:

To prolong the life of your fabric, protect from direct sunlight whenever possible. For spot cleaning, wipe area with a light damp sponge or vacuum with a soft brush attachment to remove particles. Keep at a minimum of 30cm (12 inches) away from direct heat sources. For a deeper cleaning, blot liquid spills with a clean dry cloth. Wipe with a clean cloth dampened with warm water. Do not wet excessively. A soft bristle brush may be used to remove ingrained soil. Avoid scratching by gentle brushing. Wipe with a clean cloth dampened with warm water to remove residues. Dry in shade away from direct heat. If persistent marks remain visible after cleaning, seek professional advice.

## PRODUCT RATINGS:

The lift motors are not designed to operate continuously for more than [2] minutes in an [18] minute time period or approximately 10% duty

cycle. Attempting to circumvent or exceed this rating will shorten the life expectancy of the product and may void the warranty. The massage motors are not designed to operate continuously for more than 30 minutes at a time. Please allow the massaging system to rest for 30 minutes after automatic massage shut off before restarting.

## WEIGHT LIMITS:

This product is not rated to support weights exceeding 850 pounds. This product is not rated to support weights in excess of 850 pounds inclusive of the mattress and bedding. The base will structurally support this weight, provided it is evenly distributed across the bed base. The adjustable base is not designed to support or lift this amount in the head or foot sections alone. Exceeding this weight restriction could damage the bed and/or cause injury and will void the warranty.

## IMPORTANT DO'S AND DON'TS

### DO:

- Plug your adjustable base into a power surge protector.
- Evenly distribute weight when sleeping in a split setup. Uneven distribution of weight can cause the base to raise unevenly.
- Call Customer Service for any technical issues. Do not try to force the base down, this can damage the motors or frame.
- Use mild soap and water to clean your adjustable base if staining occurs.
- Keep in mind that adjustable bases are recommended to be used with adjustable friendly mattresses
- Lower to the flat (horizontal) position after use and in between presets.
- Register your warranty as soon as your adjustable base has been delivered.

### DON'T

- Sit on corners/edges of base, this may warp the frame, struts or foam.
- Tilt the base on its side. This can damage the legs and/or leg screws.
- Stand or jump on the adjustable base at any time, this can damage the frame and motors.
- Drag the base to move it. Dragging the base could damage the frame, strip the nut/bolts or break the legs. Purchase castors if you plan on moving your base routinely.
- Enter and exit the adjustable base with the head and/or foot in the articulated position. Enter or exit your adjustable in the flat (horizontal) position.
- Tinker with or modify base. This will void the warranty.
- Press down on the head or foot while actuated can damage frame and motors.

## FCC Compliance:

This device complies with part 15 of the FCC Rules. Operation is subject to the following two conditions: (1) This device may not cause harmful interference, and (2) this device must accept any interference received, including interference that may cause undesired operation.

To comply with the FCC RF exposure requirements, no change to the antenna or the device is permitted. Any change to the antenna or the device could result in the device exceeding the RF exposure requirement and void user's right to operate the device. Radio Frequency: 2.4 GHz

## Industry Canada Statement of Compliance:

This device complies with Industry Canada license-exempt RSS standard(s). Operation is subject to the following two conditions: (1) this device may not cause interference, and (2) this device must accept any interference, including interference that may cause undesired operation of the device. This device complies with ICES-003 Class B specifications of Industry Canada.

## Before discarding the packing materials- ensure all the parts are accounted for.

All electronics and components that need to be installed are located in boxes under the base or attached to the frame.

## A) Wireless Remote Control and (3) AAA batteries

## B) Legs (4)

## C) Power Cord (1)

## D) Power Supply (1)

## E) Power Down Box (1)\*

## F) Connecting Strap\*†

## G) SmartSync™ Cord (1) †

## Headboard Bracket Components:

## H) Headboard Bracket (2)

## I) T-Bracket (2)

## J) Spacers (2)

## K) Long Bolts (8)

## L) Short Bolts (10)

## M) Nuts (18)

## Misc Parts (not included):

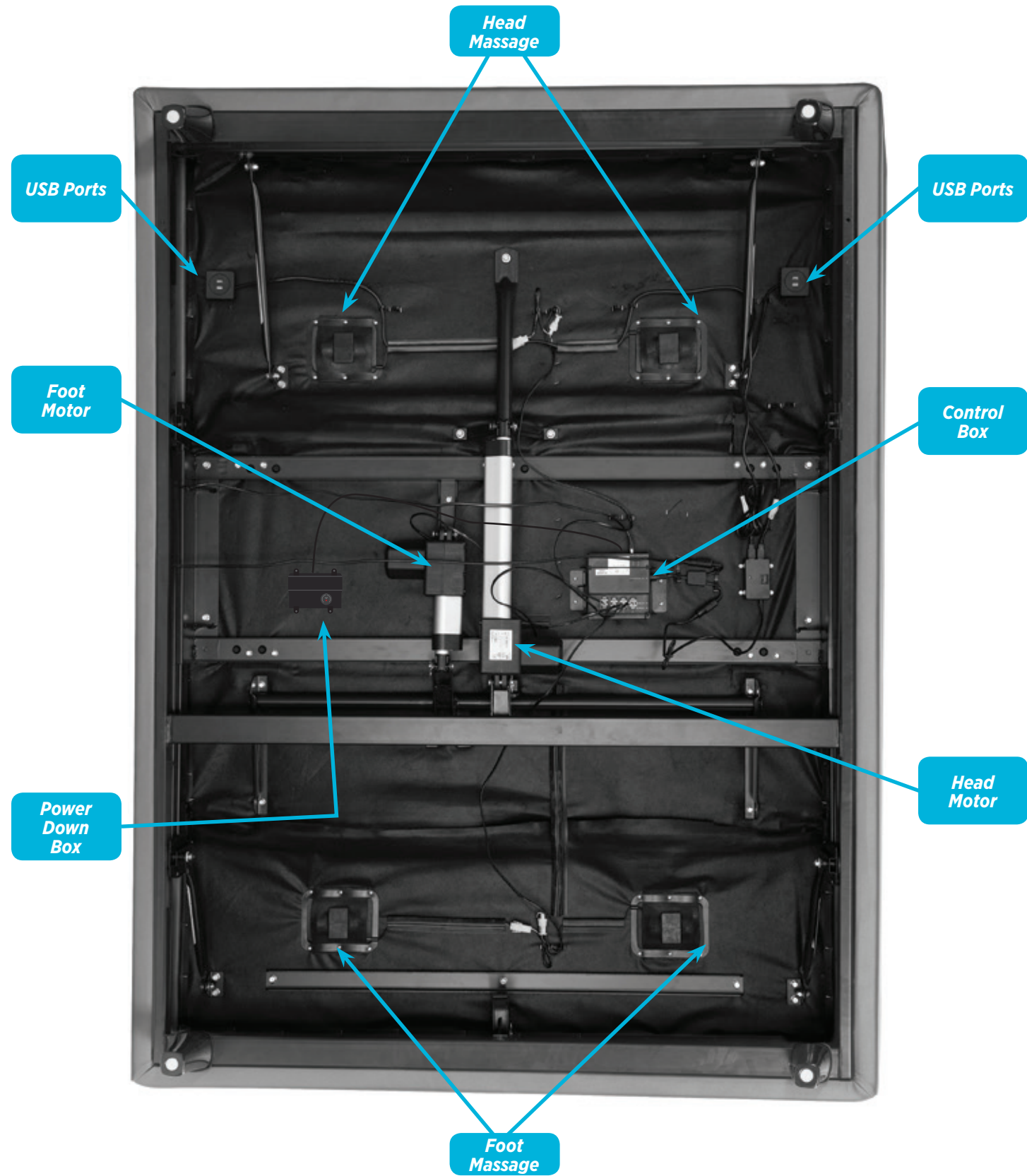
## N) Surge Protector (1)

## O) 9 Volt Batteries (2)

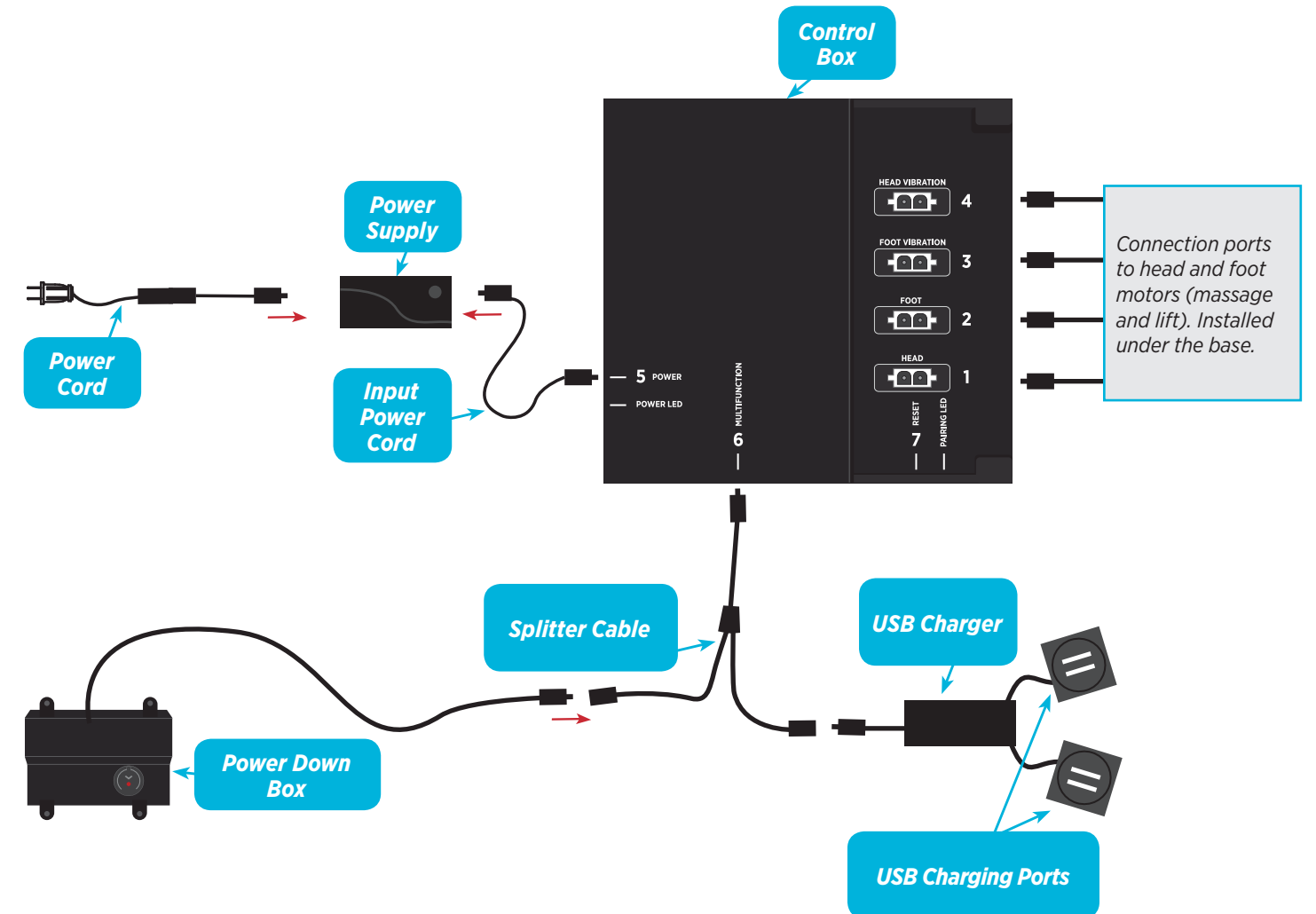
\* These items are attached to the base for shipping purposes. Carefully remove from base and set aside.

† Only included in Twin, Twin Long, Queen Split and Cal King Split bases.

A)	B)	C)
D)	E)*	F)*
G)†		
HEADBOARD BRACKET COMPONENTS		
H)	I)	J)
	K)	L) M)
MISC (NOT INCLUDED)		
N)	O)	



Not to scale. For illustration purposes only. Read all instructions before beginning installation.



# installation guide

Always use two people when setting up the base

## STEP 1

Place the bed base box in a desired location with the bottom of the box facing up.

Remove the binding straps and packing materials, making sure not to puncture the box with any sharp objects.



## STEP 2

Remove the bed base from the box keeping the bottom of the base facing upwards for easier access to the beds components

## STEP 3

To install the legs, thread the washer over the bolt of the leg with the recessed side facing the leg, and tighten by hand. **Do not over tighten.**



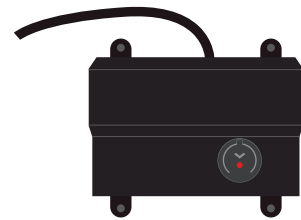
To install headboard brackets:  
See detailed instructions on page 10

## STEP 4

To sync two bases with the SmartSync™ cord: see detailed instructions on page 14

Uncoil the Power Down Box from the frame and install (2) 9 Volt batteries - optional, not included.

Place box on the ground. Ensure that it is easily accessible when the base is turned to its upright position. For power down box operating instructions see page .



## STEP 5

Uncoil input cord (connected to control box's power port) and plug into Power Supply.



## STEP 6

Uncoil the Power Cord and connect to the Power Supply. Place Power Supply on the ground and extend from the base.

Ensure that the Power Supply and all attached cords are directed toward the desired surge protector.



## STEP 7

Carefully flip the base over on to its legs.

**Important: Two people are required to move the bed base. Do not drag across the floor. Do not rest frame on its side, excessive pressure may damage the legs.**

## STEP 8

Plug the base into a power source. A surge protector is strongly recommended.



### ⚠ WARNING

Always unplug the base from the electrical outlet before servicing any part of the base. To reduce risk of electric shock, unplug the base before cleaning. To safely disconnect, ensure the base is in a flat position with all motors off, and unplug from power source.

Always use two people when setting up the base

## STEP 9

Ensure batteries are correctly installed in the back of the remote.

Quickly test functions to verify proper setup before placing mattress on base. Press FLAT to return the base to a flat position.



## STEP 10

Place the mattress on the base.

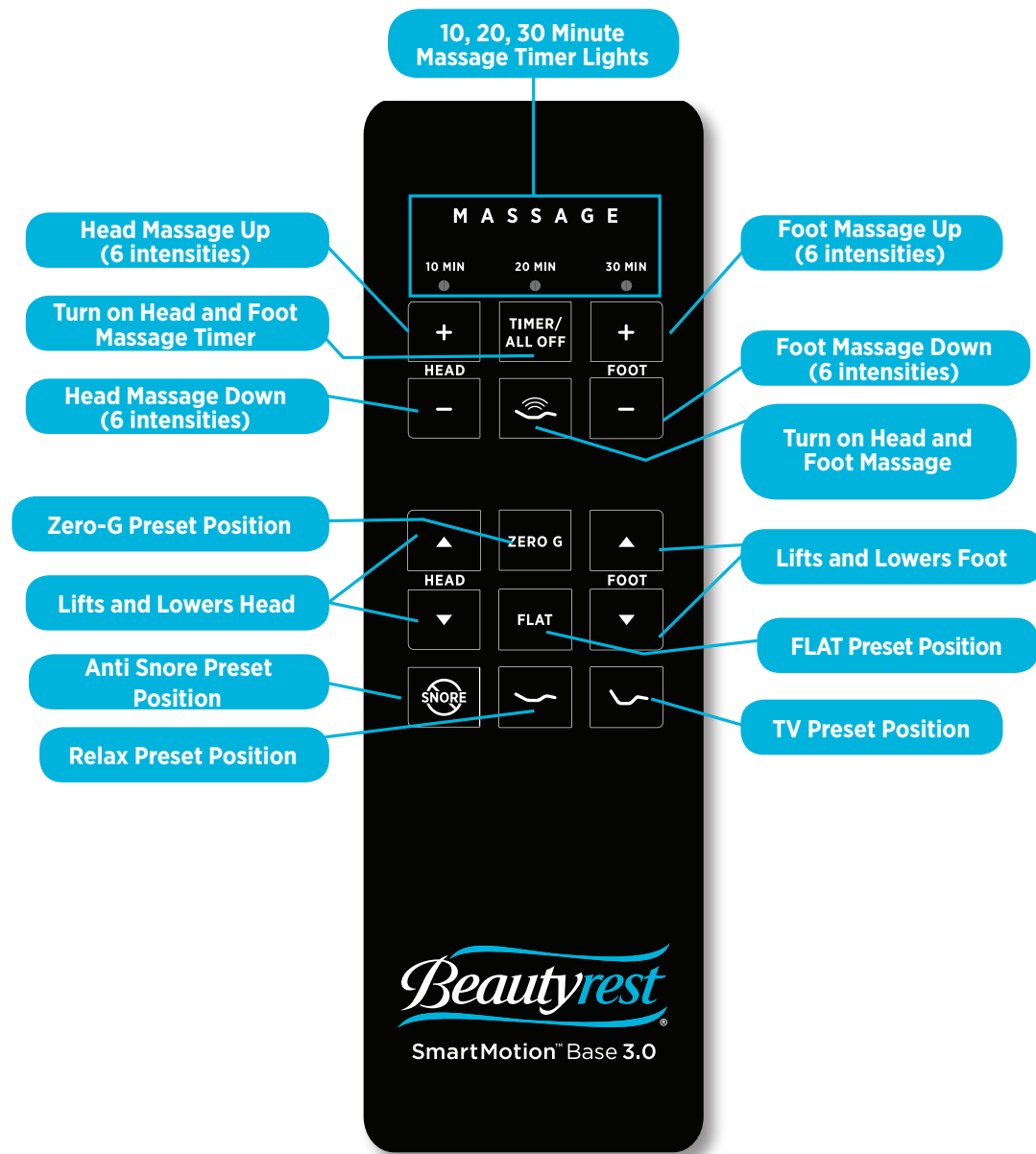
Select Beautyrest® mattresses\* are compatible with the mattress retainer attachment panel installed on the SmartMotion™ bases



\*If the mattress is not compatible with the attachment panel, a mattress retainer bar is available for purchase at: 1-888-550-3746



Basic setup is now complete!



**SAVE UP TO THREE FAVORITE POSITIONS**

**To program:**

Press and hold one of the buttons for at least 5 seconds. The LED lights at top of remote will flash in succession 3 times.

Position is now saved.

**To restore the preset buttons back to their original factory settings:**

Hold FLAT and ZERO-G simultaneously for at least 5 seconds. The LED lights at top of remote will flash in succession 3 times.

The original presets will be restored.

**MESSAGE FEATURE**

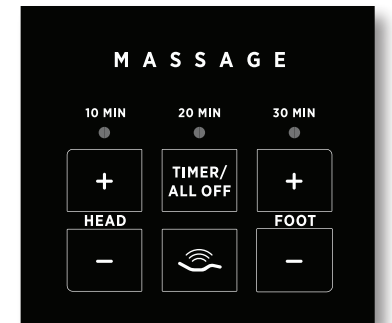
The **MESSAGE** button turns head and foot massage on and off.

The **HEAD +/-** buttons adjust the head massage intensities. Levels 1-6.

The **FOOT +/-** buttons adjust the head massage intensities. Levels 1-6.

The **TIMER/ALL OFF** button Starts massage at level 3. Select a 10, 20 or 30 minute massage interval. Pressing a fourth time will turn off massage.

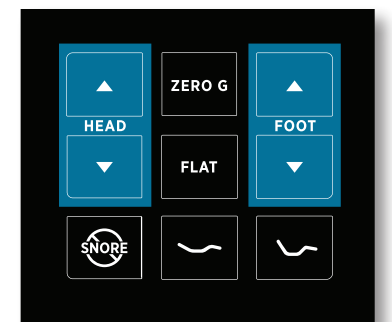
The light on the top of the remote indicates a 10, 20 or 30 minute timer setting. Massage will automatically shut off after 10 minutes if the massage timer isn't set.



**ADJUST**

The **HEAD** arrows lift and lower the head section of the base.

The **FOOT** arrows lift and lower the foot section of the base.



**ONE TOUCH BUTTONS**

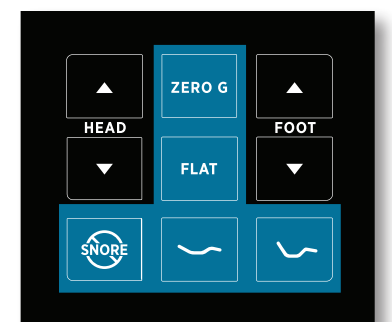
One touch **ZERO G** preset position. Zero-G adjusts your legs to a higher level than your heart helping to relieve pressure off the lower back and promote circulation.

One touch **FLAT** preset position.

One touch **ANTI SNORE** preset position.

One touch **TV** preset position.

One touch **RELAX** preset position.



# headboard bracket installation guide (optional)

A 9/16" (14 mm) & 1/2" (13 mm) socket and crescent wrench are necessary to complete installation.

HEADBOARD BRACKET COMPONENTS					
Headboard Bracket (2)	T-Bracket (2)	Spacer (2)	Long Bolt (8)	Short Bolt (10)	Nut (18)

## STEP 1

- a.) Align the hole in the bracket to the brass sleeve into which the leg threads. Hold the bracket in place and screw the leg into the base until it is snug. DO NOT OVERTIGHTEN. Too much force may cause the leg to spin freely.
- b.) Align the tab with the hole in the frame (located towards the foot of the base) and use a short bolt and nut to secure the bracket. Make sure the bolt is tight.



## STEP 3

You may now connect your headboard to the attachment plates using the remaining short bolts and nuts to secure it to the brackets. The heads of the bolts will face outward. Use a 9/16" (14mm) socket and 1/2" (13mm) wrench to tighten the bolts.

## STEP 2

Attach the plastic spacer and T-Bracket.

- a.) Measure the distance between the mounting holes on the headboard and install the spacer and attachment plate to accommodate the headboard.
- b.) To install the plastic spacer and attachment plate, you will need (2) long bolts and (2) nuts. Place the spacer and attachment plate in the desired location and slip the bolts through the holes with the head of the bolt facing outward. Position the bolts diagonally on the spacer. Use the 9/16" (14 mm) socket and wrench to tighten the bolts.



# usb and remote station

## USB CHARGERS

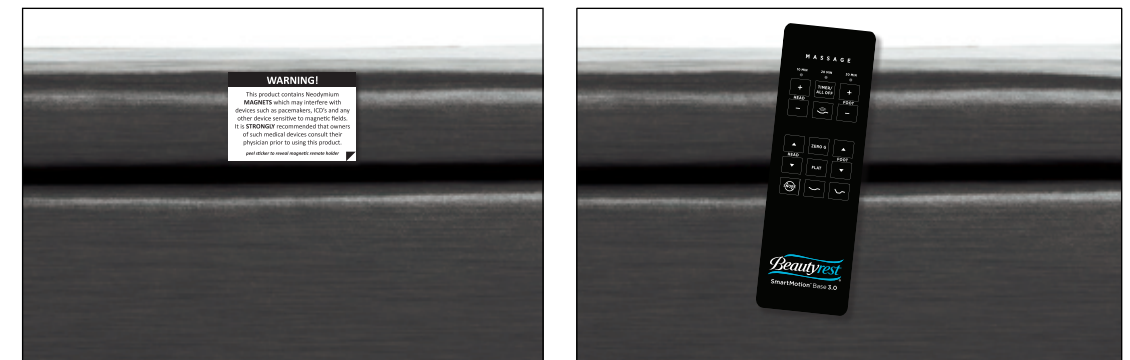
USB charging connections are located on each side of the base, on the underside of the head section of the platform. Charge two smart devices at the same time.

Voltage: 5V DC  
Current: 2.5A (max 13 Watts)



## MAGNETIC REMOTE HOLDER

Read and remove warning sticker located on top of the magnet before attaching the remote to the base.



### WARNING:

This product contains Neodymium MAGNETS which may interfere with devices such as pacemakers, ICD's and any other device sensitive to magnetic fields. It is STRONGLY recommended that owners of such medical devices consult their physician prior to using this product.

# emergency power down box

# pair remote

Store the power down box in a convenient location for emergency use.  
(2) 9 Volt batteries are required to operate the power down feature and are NOT included.

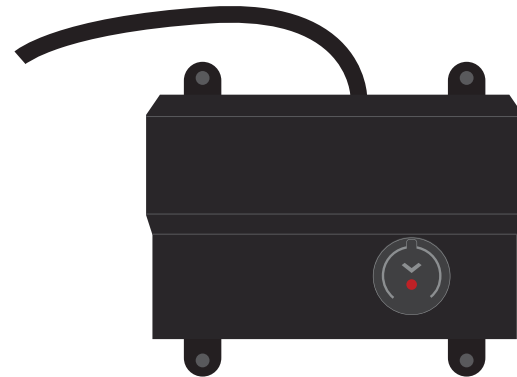
## FOR EMERGENCY USE ONLY.

In the event that the base is stuck in an articulated position during a power outage-  
the Power Down Box will return the base to a flat position.

The Power Down Box can only be used to bring the base to a flat position.  
It will not bring the base to a flat position when the base is connected to a working power source.

### STEP 1

Locate the Power Down Box under the base.



### STEP 2

Press and hold the button until the base is flat.

Note: The button can be pressed at any time during the loss of power to bring the base flat.

The original remote that comes in the box is already paired to the bed base. No further action is required.  
In the event that the remote is not paired with the base, follow the steps below.

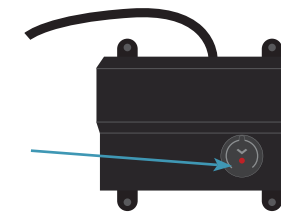
### STEP 1

Remove back cover from remote control. Remove and replace batteries.



### STEP 2

Double click the button on the Power Down Box (this will not cause the base to move). The light will illuminate.



### STEP 3

Press and hold button on the back of the remote. The light will begin to flash then become a continuous solid light.



### STEP 4

Both lights on the Power Down Box and the Remote will be continuous, then simultaneously turn off. Replace back cover of the remote.



The remote is now paired with the base.

### If the Power Down Box is not available :

- Remove back cover of the remote, locate the rubber button in the center of the back.
- On the control box located underneath the bed, double click the RESET button, light will illuminate.
- Press and hold the back rubber button on the remote. The button will begin to flash then become a continuous solid light for 1 to 2 seconds and then turn off.
- Once the remote is paired, replace back cover of the remote and test base functionality.



# setting up two bases

Connecting straps are secured to the base frame upon delivery.

If a split setup is being installed, plastic connecting straps are provided (one per base) to secure the bases together. Use both straps to secure the head and foot portions together.

## STEP 1

With the bases in their desired location, slightly loosen both legs to allow the strap to fit on the leg bolt, between the leg washer and frame.



## STEP 2

Slide side (a) of the connecting strap onto leg bolt. Swing the strap and connect side (b) to the leg bolt. Secure the strap by shifting to the left.



## STEP 3

Re-tighten legs. **Do not over tighten.** Use the remaining strap and repeat on other end of the base.

# syncing two bases

If simultaneous operation of two bases is desired, use the SmartSync™ Cord to connect the electronics of both bases together.

## STEP 1

Unplug base from power source.

## STEP 2

Disconnect the power-down box cable from each control box. Make note where the cable was plugged in.

## STEP 3

Connect the male end of the sync cord to each control box. Insert it into the same port that you disconnected the control box from in Step 2.

## STEP 4

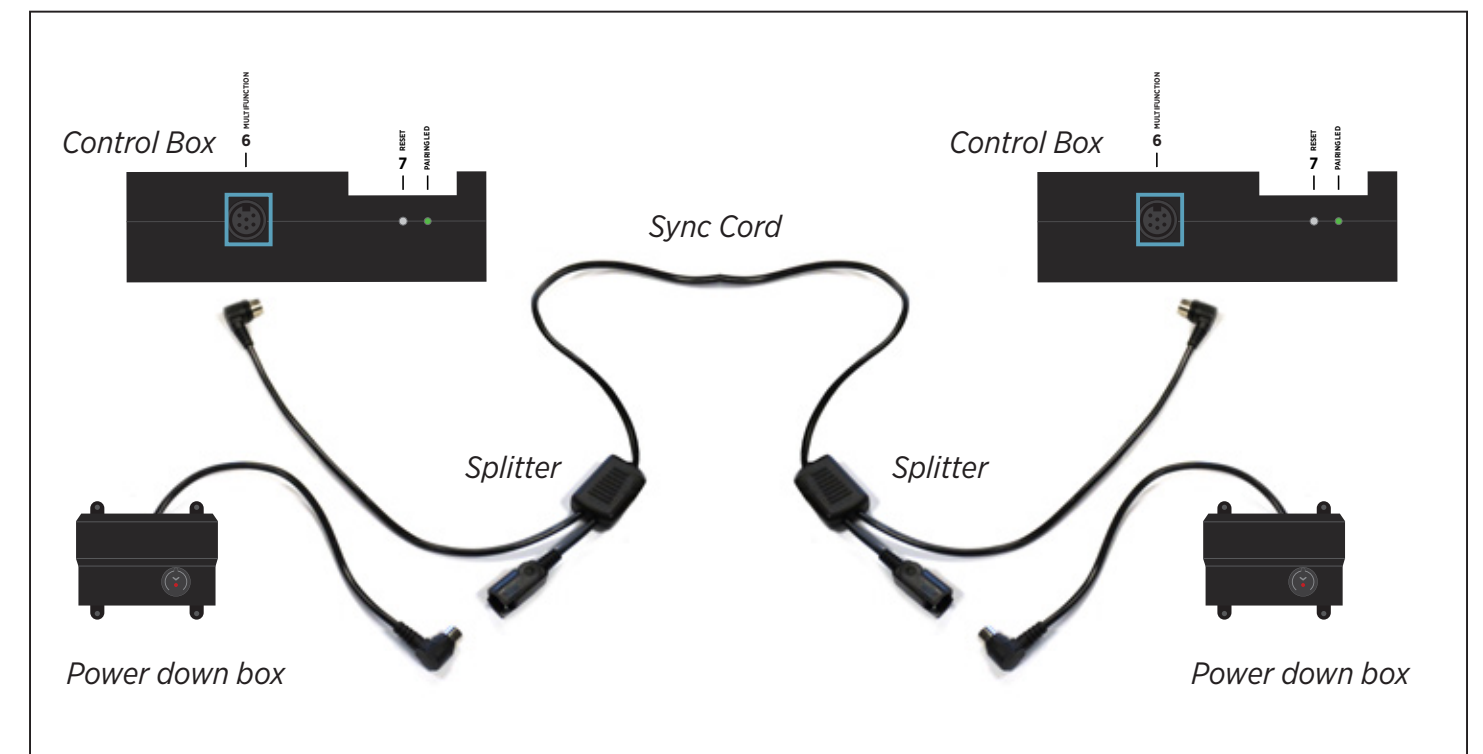
Connect each power-down box male connection to the sync cord female connection (Refer to the illustration below).

## STEP 5

Plug base back into the power source.

## STEP 6

Check to ensure all cords are securely attached. Both remotes will now operate both bases simultaneously (If the remotes become unpaired, see page).



# Sleeptracker® setup

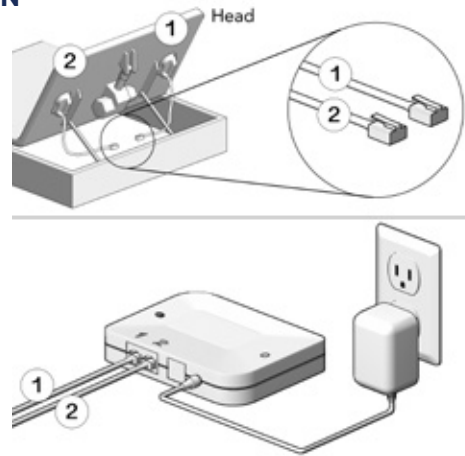
## PART LIST

\*King bases will have a spare processor and 5v DC Power

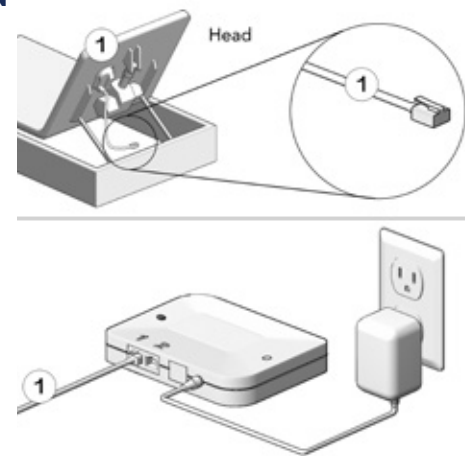


Visit [help.beautyrest.com](http://help.beautyrest.com) from your smartphone to download the app and view additional Sleeptracker® product information.

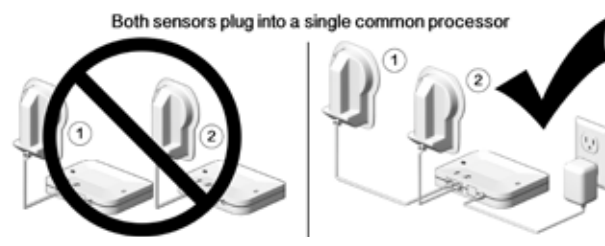
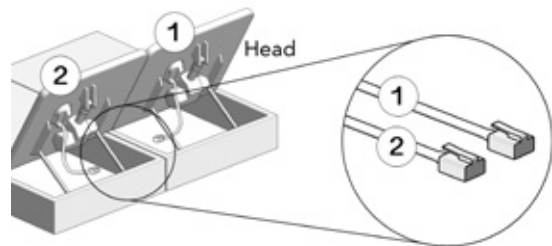
## QUEEN



## TWIN



## KING





# Product Documentation

The following statements must be included in the end user documentation.

## Regulatory Compliance Information

This equipment complies with Part 15 of the FCC Rules. Operation of this equipment is subject to the following two conditions: (1) the equipment may not cause harmful interference, and (2) the equipment must accept any interference that might cause undesired operation.

### Radio and Television Interference

This equipment has been tested and found to comply with the limits for a Class B digital device, pursuant to Part 15 of the FCC Rules. These limits are designed to provide reasonable protection against harmful interference in a residential installation. This equipment generates, uses, and can radiate radio frequency energy. If the equipment is not installed and used in accordance with the instructions, the equipment might cause harmful interference to radio communications. There is no guarantee, however, that such interference will not occur in a particular installation. If this equipment does cause harmful interference to radio or television reception (which can be determined by turning the equipment off and on), the user is encouraged to try to correct the interference by taking one or more of the following measures:

- Relocate the equipment
- Increase the separation between the equipment and the receiver
- Connect the equipment into an outlet on a circuit different from that of other electronics
- Consult the dealer or an experienced radio technician for help.

*Important:* Any changes or modifications not expressly approved by Fullpower Technologies, Inc.(FTI) could void the EMC compliance and negate your authority to operate this equipment.

This equipment was tested for FCC compliance under conditions that included the use of FTI peripheral devices and FTI cables and connectors between system components. It is important that you use FTI cables and connectors between system components to reduce the possibility of causing interference to radios, television sets, and other electronic devices. You can obtain proper FTI cables and connectors through an FTI-authorized dealer.

*Responsible party (contact for FCC matters only)*  
Fullpower Technologies, Inc.(FTI)  
1200 Pacific Ave, Ste 300 Santa Cruz, CA 95060 USA

FCC ID: 2AF2O-STS-10  
Contains FCC ID: H8N-WLL6540

### Industry Canada Statement of Compliance

This device complies with Industry Canada license-exempt RSS standard(s). Operation is subject to the following two conditions: (1) this device may not cause interference, and (2) this device must accept any interference, including interference that may cause undesired operation of the device.

This device complies with ICES-003 Class B specifications of Industry Canada.

IC: 20700-STS-10

Contains IC: 1353A-WLL6540

**Déclaration de conformité aux normes d'Industrie Canada**

Cet appareil est conforme aux normes CNR exemptes de licence d'Industrie Canada. Le fonctionnement est soumis aux deux conditions suivantes : (1) cet appareil ne doit pas provoquer d'interférences et (2) cet appareil doit accepter toute interférence, y compris celles susceptibles de provoquer un fonctionnement non souhaité de l'appareil. Cet appareil numérique de la classe B est conforme à la norme NMB-003 d'Industrie Canada.

IC: 20700-STS-10

Contient IC: 1353A-WLL6540

**Exposure to Radio Frequency Energy**

This equipment complies with FCC radiation exposure limits set forth in the FCC's OET Bulletin 65 and Industry Canada's RSS-102 standard for an uncontrolled environment. This equipment should be installed and operated with minimum distance of 20cm (about 8 inches) between the radiator and your body. This equipment must not be co-located or operating in conjunction with any other antenna or transmitter.

**Exposition aux radiofréquences**

Cet appareil est conforme à la norme CNR-102 d'Industrie Canada pour un environnement non contrôlé. Cet appareil doit être installé et opéré à une distance minimale de 20cm entre le transmetteur et le corps humain. Cet appareil ne doit pas être co-localisé ou opéré avec une autre antenne ou un autre transmetteur.