

BOSMA

1 (800) 976-0881
support@bosmausa.com
www.bosmausa.com

BOSMA

V2.0

CapsuleCam

H.265 1080p WIFI CAMERA
Quick Start Guide

1 (800) 976-0881
support@bosmausa.com
www.bosmausa.com

Bosma CapsuleCam

Our team has developed the Bosma line of connected devices to bring the Internet of Things into your home. The Bosma CapsuleCam is designed to provide you with leading technology to monitor your property and loved ones.

This step-by-step guide will provide you with the necessary information to get your camera connected and working within a few minutes. Contact the Bosma customer support team if you have any questions about how to set up your new camera.

1 (800) 976-0881 | support@bosmausa.com | www.bosmausa.com

Main Features



H.265 Video Compression

About 40% the size of the traditional H.264 compression.



Premium HD 1080p Quality

Stream, record, and watch video in full HD 1920 x 1080p @30fps.



162° Field of View

Cover more ground with a wide field of view.



Starlight Sensor

CMOS sensor provides astonishing images in low light conditions.



Two-way Audio

Enhanced built-in mic and speaker with noise suppression.



Night Vision

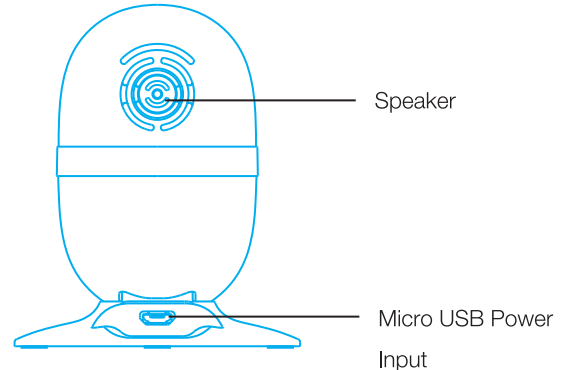
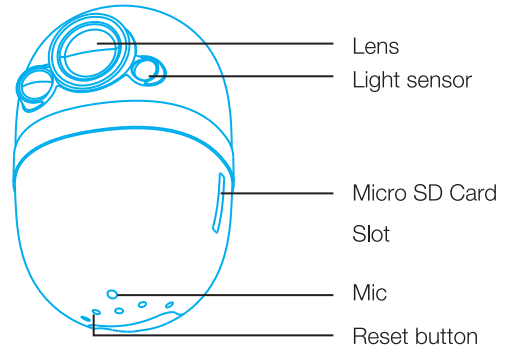
Infrared (IR) vision up to 50 feet.



Motion Detection

Receive motion detection snapshots and video.

CapsuleCam



Quick Setup

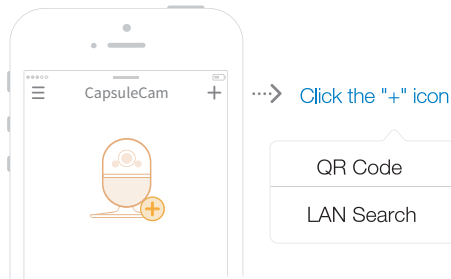
Step 1. Bosma CapsuleCam App Installation

Scan the Bosma CapsuleCam App QR code or download the Bosma CapsuleCam App from the App Store or Google Play.

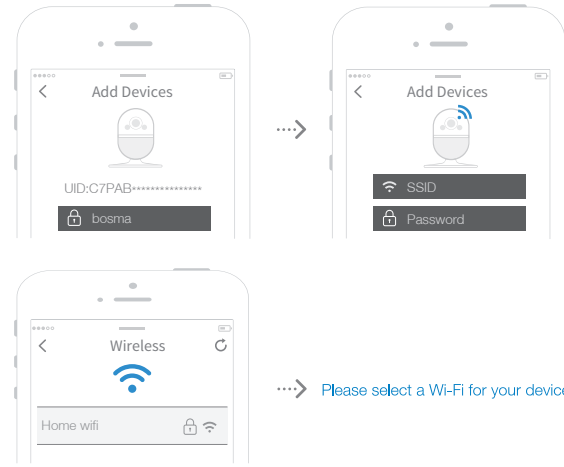


Step 2 Adding a Camera to the App

1. Complete the user registration and sign in. Click the "+" icon at the top of the "My Camera" page to add your camera.



- QR Code: Scan the QR code on the camera with the app to get the ID. Enter default device password 'bosma'. Then follow the guide on APP.

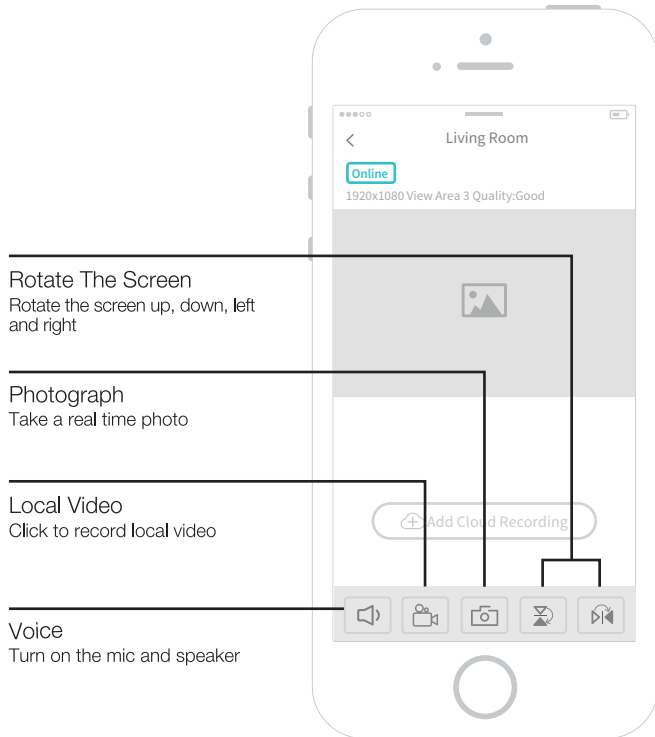


...> Please select a Wi-Fi for your device

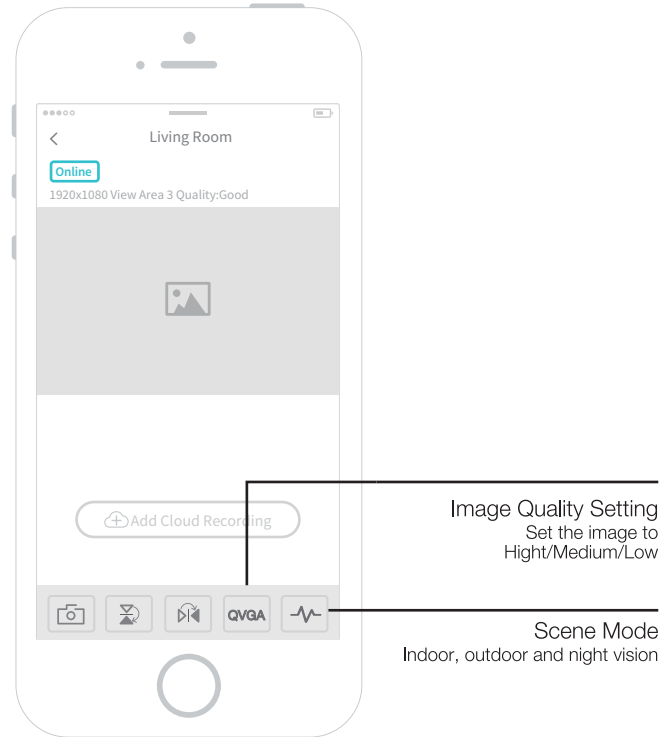
- LAN Search: Lan Search works under the condition that the camera WiFi is successfully configured. If the camera is accidentally deleted and needs to be re-added to the app, the user can click "LAN Search". The user will find all the connected cameras in the current local area network. Select the connected camera and add it.



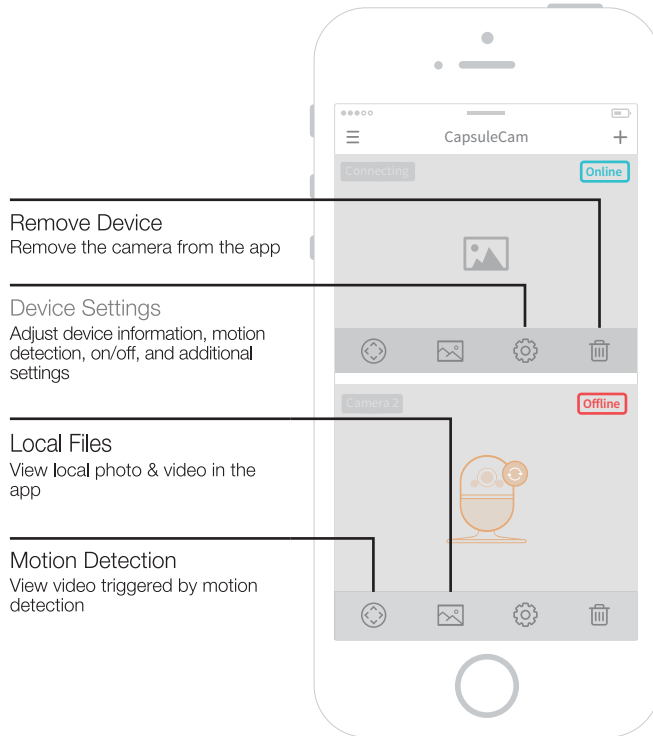
Camera Live Video



Camera Live Video



Camera Settings & Video Footage



Customer Support

Caution: The user is cautioned that changes or modifications not expressly approved by the party responsible for compliance could void the user's authority to operate the equipment.

This device complies with Part 15 of the FCC Rules. Operation is subject to the following two conditions:

(1) this device may not cause harmful interference, and (2) this device must accept any interference received, including interference that may cause undesired operation.

NOTE: This equipment has been tested and found to comply with the limits for a Class B digital device, pursuant to Part 15 of the FCC Rules. These limits are designed to provide reasonable protection against harmful interference in a residential installation. This equipment generates, uses and can radiate radio frequency energy and, if not installed and used in accordance with the instructions, may cause harmful interference to radio communications. However, there is no guarantee that interference will not occur in a particular installation.

If this equipment does cause harmful interference to radio or television reception, which can be determined by turning the equipment off and on, the user is encouraged to try to correct the interference by one or more of the following measures:

- Reorient or relocate the receiving antenna.
- Increase the separation between the equipment and receiver.
- Connect the equipment into an outlet on a circuit different from that to which the receiver is connected.
- Consult the dealer or an experienced radio/TV technician for help.

FCC Radiation Exposure Statement:

This equipment complies with FCC radiation exposure limits set forth for an uncontrolled environment. This transmitter must not be co-located or operating in conjunction with any other antenna or transmitter.

BOSMA

Contact the Bosma customer support team if you have any questions about how to set up your new camera.

☎ 1 (800) 976-0881 ✉ support@bosmausa.com 🌐 www.bosmausa.com

Bosma offers a one year limited warranty on all products, for details please visit www.bosmausa.com.