

Let us know what you think...

CUSTOMER SERVICE

support@bosmasmarthome.com
1(800)-976-0881
www.bosmasmarthome.com

*The quick start guide will be updated without notification, please find latest version on www.bosmasmarthome.com.



BOSMA-X1 QUICK START GUIDE



Caution:
The user is cautioned that changes or modifications not expressly approved by the party responsible for compliance could void the user's authority to operate the equipment.

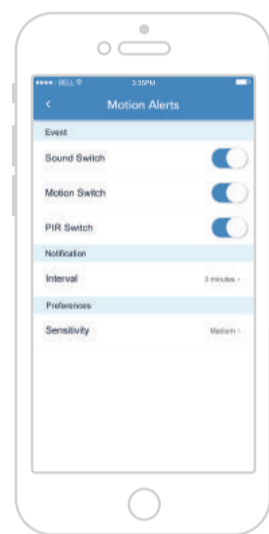
This device complies with Part 15 of the FCC Rules. Operation is subject to the following two conditions: (1) this device may not cause harmful interference, and (2) this device must accept any interference received, including interference that may cause undesired operation.

Note:
This equipment has been tested and found to comply with the limits for a Class B digital device, pursuant to Part 15 of the FCC Rules. These limits are designed to provide reasonable protection against harmful interference in a residential installation. This equipment generates, uses and can radiate radio frequency energy and, if not installed and used in accordance with the instructions, may cause harmful interference to radio communications. However, there is no guarantee that interference will not occur in a particular installation.
If this equipment does cause harmful interference to radio or television reception, which can be determined by turning the equipment off and on, the user is encouraged to try to correct the interference by one or more of the following measures:
-- Reorient or relocate the receiving antenna.
-- Increase the separation between the equipment and receiver.
-- Connect the equipment into an outlet on a circuit different from that to which the receiver is connected.
-- Consult the dealer or an experienced radio/TV technician for help.

FCC Radiation Exposure Statement:
This equipment complies with FCC radiation exposure limits set forth for an uncontrolled environment. This equipment should be installed and operated with a minimum distance of 20cm between the radiator and your body.
This transmitter must not be co-located or operating in conjunction with any other antenna or transmitter.

Notification

Notifications will be pushed to APP once motion alert, sound alert and PIR sensor are triggered.



12

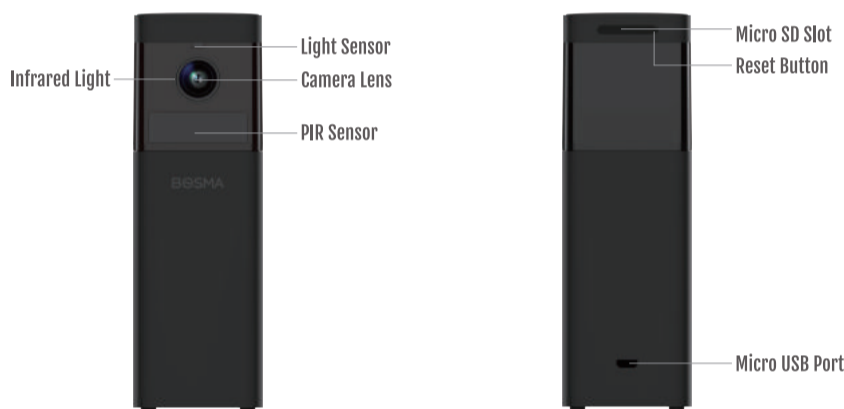
We always strive for excellence in the usability of our products, with intuitive apps, simple installation, and a US-based customer service team that is always there to help.

This step-by-step guide will provide you with the necessary information to get your camera connected and working within a few minutes.

The BOSMA smart home cameras enable you to connect with your family, pets and home. When you are away, we will make sure you never lose sight of what matters most to you.

1

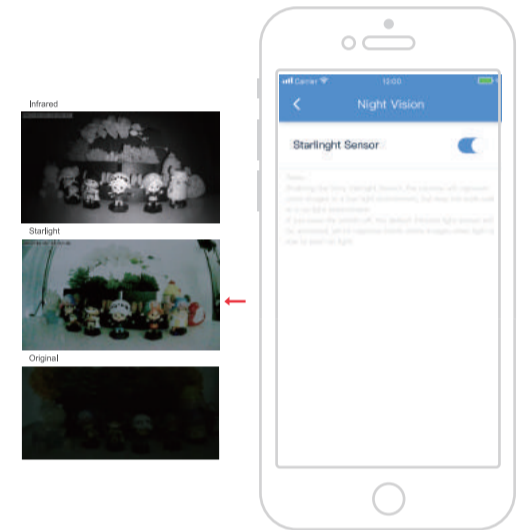
Smart House, Safe House



2

Night Vision

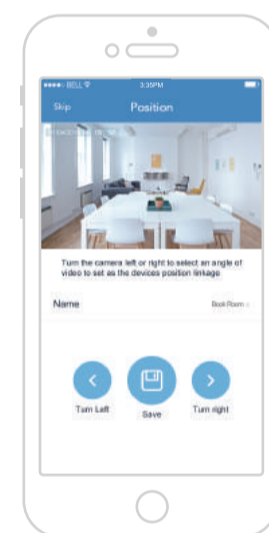
Bosma-X1 offers two types of night vision. One is the low light color vision supported by the starlight sensor. With this sensor, you can see color videos in a very low light environment. The other one is a traditional infrared sensor, which provides black-and-white images in the dark. You can turn on the starlight sensor on the Device Setting -> Night Vision page. If the sensor is turned on but the room is too dark, use a small night light to help the sensor work well.



11

Device Linkage

After a doorbell or door sensor is added, you can set a view position for BOSMA X1. Once the doorbell rings or the sensor is triggered, BOSMA X1 will turn to the preset position automatically.



10

Bosma -X1

- 📶 WI-FI
- 🏠 SMART HUB
- 📺 MORE DEVICE
- ★ STARLIGHT VISION
- 🌙 IR NIGHT VISION
- 🗣️ REAL TWO-WAY AUDIO
- 📺 MOTION DETECTION
- 🔊 SOUND DETECTION
- 📺 HDR(HIGH DYNAMIC RANGE)
- ⚙️ 1 MIN SETUP
- 📱 COMPATIBLE WITH ALEXA
- 💾 128G SUPPORTED



3

Quick Setup

1

Download BOSMA App from Google Play or App Store.



4

Real Two-way Audio

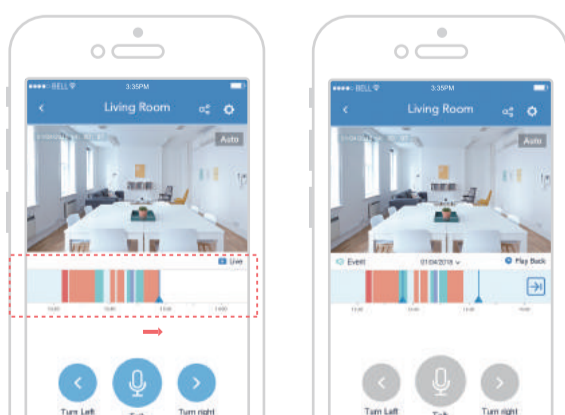
Farewell to walkie-talkie style two-way audio experience, to achieve real free communication.



9

Live video & Playback

You can see live video or check video playback by sliding the timeline to right side. The video can be clipped and saved as you want.

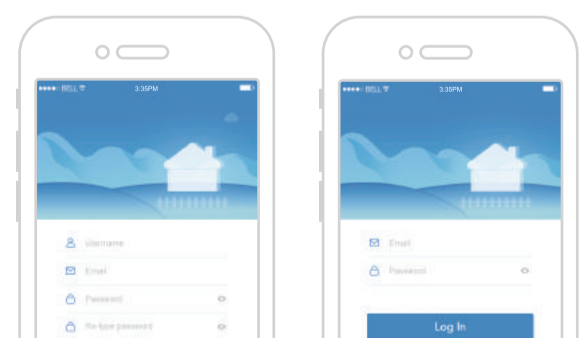


8

Quick Setup

2

Sign up to create a new account and login.

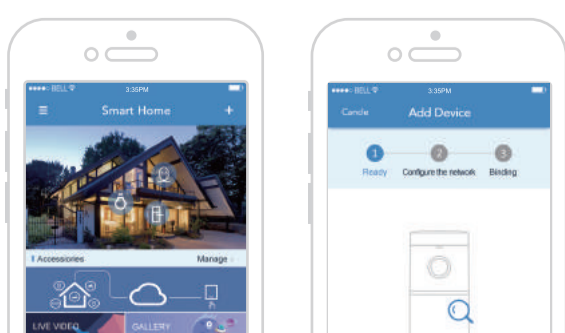


5

Quick Setup

3

Turn on bluetooth, and tap '+' button at the top-right corner to add device.

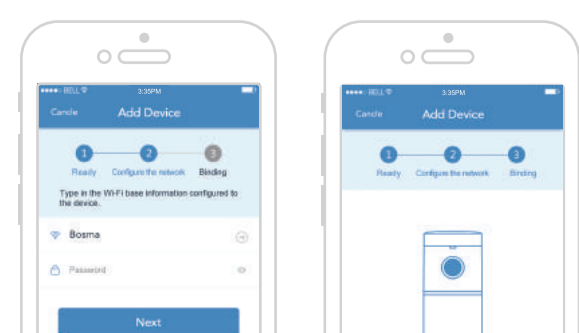


6

Quick Setup

4

Select Wi-Fi network for device, enter password and tap "Next" to bind device.



7