



BM020



联合：香港乔威集团有限公司
 出品：深圳市乔威电源有限公司
 SHENZHEN JOWAY POWER SUPPLY CO.,LTD
 地址：深圳市福永街道和平社区福源一路德金工业园D栋
 电话：0755-2960 7103 传真：0755-2960 7113

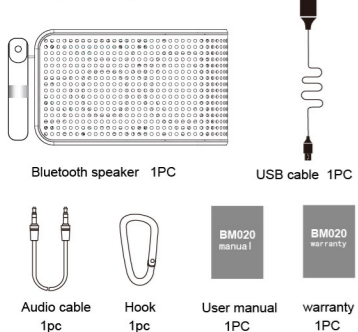
SOUMINI

Applicable to a variety of Bluetooth devices

Feature English

play music and phone call function with bluetooth.
 APE and FLAC format music can be played by TF card.
 MP3、WAV、WMA format music can be played by TF card.
 TF card reader and USB sound card can be supported.
 FM radio function
 Play music with AUX cable.
 NFC function
 read out the number of incoming call.

Packing content English



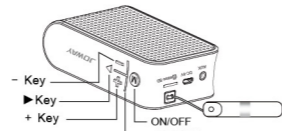
specification English

main specification	
speaker	portable bluetooth speaker
sound track	mono
active or passive	active
The way of control	by button
other function	Bluetooth, phone call, TF card support, USB sound card, TF card reader, FM radio, NFC link, AUX function.
storage type	with a maximum of 32G TF card.
internal battery	3.7V 600mAh polymer
power supply	DC5V 500mA MICRO USB plug
Technical specifications	
Bluetooth version	V2.1+EDR
speaker size	1.5 inch , Passive vibration film
output capacity	3R 3W
Frequency Response	60Hz--17KHz
music time	5 hours(80% sound volume)
standby time	≥10 hours
charge time	about 2 hours
supported format by TF card	APE、FLAC、MP3、WAV、WMA

Dimension: L102×W33×H61mm
 Net weight: 172g (included the battery)

Key Function English

- 1.ON/OFF: press the "mode" button for 3 SECS. click the "mode" button, mode will be changed. One click one mode, bluetooth mode→TF card mode(if with TF card)→Radio mode→AUX mode(if with AUX cable) in a loop like this.
- 2."+"button: click it,next song.Press for long time, sound volume up, in radio mode, it means next radio station.
- 3."-"button: click, previous song. Press for long time, sound volume down.it's previous song, in radio mode, it means previous radio station.
4. "▶"button: In music mode, click it, play/pause. In radio mode, press it for 2 SECS, it will search the radio station automatically. When you have a call, click it, pick up/hang up the call. In bluetooth mode, press it for 3 SECS, will prepare.

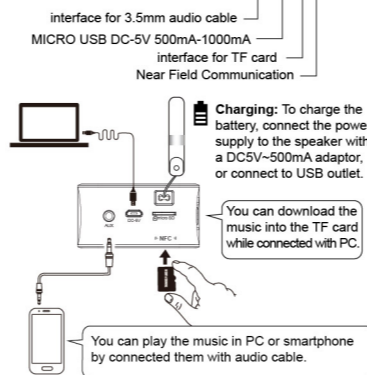


LED lights:

- ★ blue light quickly flash, preparing
- ★ blue lights slow-flash, preparation succeeded.
- ★ bluw lights on, it's in TF card/AUX/radio mode.
- ★ red lights on, charging.
- ★ red lights off, charging completed.

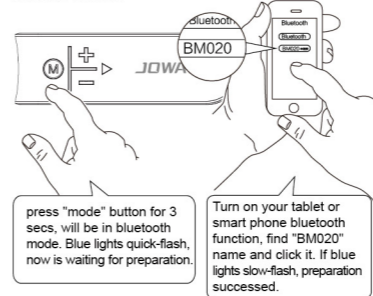
Interface function English

1. **NFC**: Near Field Communication
2. **AUX**: interface for 3.5mm audio cable.
3. **Micro SD**: interface for TF card.
4. **Charge interface**:MICRO USB DC-5V 500mA-1000mA



Bluetooth Connection English

Link speaker with tablet and smart phone which has bluetooth function.



Wireless range up to 10M, environment causes the difference.

Notes:

1. If ask you password, please type "0000" in.
- 2.If the product turns on again, it will link the device latest linked with.
- 3.If be linked, and you want to link with other devices, please press "▶"button for 3 secs, blue light will flash quickly, that means waiting for preparation.

Functional description English

- 1.**Play by TF card.**
 The speaker is on and now if plug in TF card, it will be TF card mode. the music in TF card will be played automatically.
- 2.**USB sound card and data transfer**
 Connect the PC with MICRO USB cable when the speaker is on, then it's in USB mode, can play the music in the PC, also can transfer the music documents into TF card.

3. **(AUX) AUX mode**
 connect the speaker with a device by 3.5mm audio cable, then can play the music in the device.

- 4.**FM radio play**
 Press the M to the radio mode, long press the Play / Pause button for 3 seconds and enter into the automatically Tuning status, blue lights flashing could be ok.
Note: You can insert the audio cable into the stereo acting as enlarging the radio Amplified antenna,enhanced receiver radio signal.

- 5.**How to use NFC**
 make the blue light quickly flash. turn the bluetooth and NFC function of your smart phone on. Then choose the "Yes" when the device ask your permission of connection after the NFC sensor of your phone touched the spot of NFC of the speaker.

If you need, can change into other mode by clicking the "M" button.

Warnings English

- Please use and store this product at room temperature
- Do not expose this product to rain or wet conditions
- Do not throw and drop this product to avoid product damage
- Do not self-dismantling, repair and transform the product
- Do not use chemical solvent cleaning the product
- Please don't arbitrarily discarded or placed the lithium battery in the fire in order to avoid the risk of explosion

FAQ English

Bluetooth connecting failed

- 1.turn off the speaker and turn on again.
- 2.turn the bluetooth function of your phone off and then turn it on, it will start over to search other devices.
3. if need you the password, please type in "0000".

Wrong with TF card/format

- 1.please check the TF card is FAT32 or not, the speaker can only support the FAT32 format.
2. if still wrong, make sure the music format is MP3, WAV, WMA, APE, FLAC.
3. If have many other kinds of documents, it's better to only reserve the music documents.

can't turn on.

please check if the speaker is out of power.

Warnings English

Please use and store this product at room temperature
 Do not expose this product to rain or wet conditions
 Do not throw and drop this product to avoid product damage
 Do not self-dismantling, repair and transform the product
 Do not use chemical solvent cleaning the product
 Please don't arbitrarily discarded or placed the lithium battery in the fire in order to avoid the risk of explosion

FAQ English

Bluetooth connecting failed

- 1.turn off the speaker and turn on again.
- 2.turn the bluetooth function of your phone off and then turn it on, it will start over to search other devices.
3. if need you the password, please type in "0000".

Wrong with TF card/format

- 1.please check the TF card is FAT32 or not, the speaker can only support the FAT32 format.
2. if still wrong, make sure the music format is MP3, WAV, WMA, APE, FLAC.
3. If have many other kinds of documents, it's better to only reserve the music documents.

can't turn on.

please check if the speaker is out of power.

FCC Statement English

Changes or modifications not expressly approved by the party responsible for compliance could void the user's authority to operate the equipment.

This equipment has been tested and found to comply with the limits for a Class B digital device, pursuant to Part 15 of the FCC Rules. These limits are designed to provide reasonable protection against harmful interference in a residential installation. This equipment generates uses and can radiate radio frequency energy and, if not installed and used in accordance with the instructions, may cause harmful interference to radio communications. However, there is no guarantee that interference will not occur in a particular installation. If this equipment does cause harmful interference to radio or television reception, which can be determined by turning the equipment off and on, the user is encouraged to try to correct the interference by one or more of the following measures:

- Reorient or relocate the receiving antenna.
- Increase the separation between the equipment and receiver.
- Connect the equipment into an outlet on a circuit different from that to which the receiver is connected.
- Consult the dealer or an experienced radio/TV technician for help

This device complies with part 15 of the FCC rules. Operation is subject to the following two conditions (1) this device may not cause harmful interference, and (2) this device must accept any interference received, including interference that may cause undesired operation