

1.6 User Manual



CLARKS Digi-Tape Operational Manual v1.2

10th April 2013

designworks 

Digi-Tape

Operational Manual

GLOBAL FUNCTIONS

Press 1: Powers up device / Holds measurement / Resets device to zero

Press 2: Powers up device / Transmit test

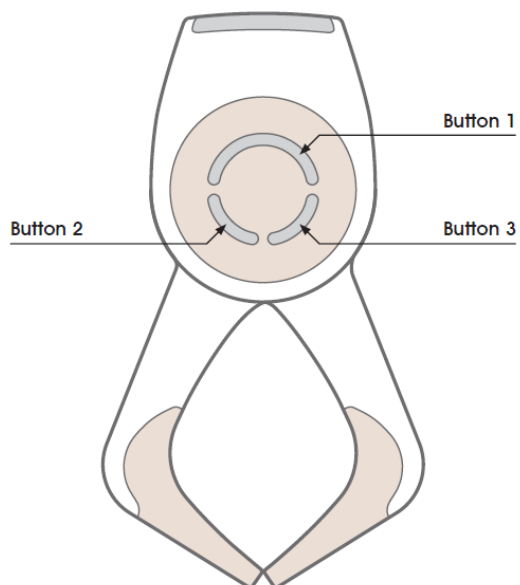
Press 3: Powers up device / Transmits measurement (bluetooth)

Hold 1: Powers off after 5 seconds

Hold 1 + 2: Made discoverable after 5 seconds

Hold 2 + 3: Disconnects from sync with iPad after 5 seconds

60 seconds: If device left for 60 seconds it automatically powers off

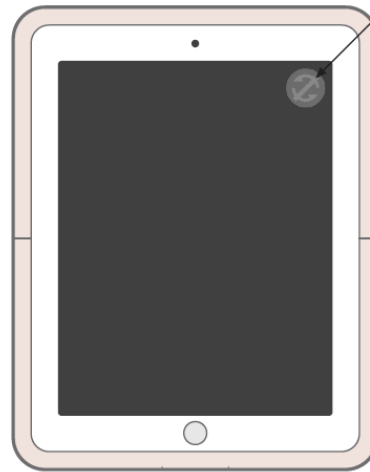


Digi-Tape

Operational Manual

SYNCING IPAD & DIGI-TAPE

1. Press Sync button to wake up Bluetooth on iPad
2. Press and hold buttons 1+2 on Digi-Tape
3. Confirm Sync on iPad
4. Select Digi-Tape Colour on iPad
5. Check correct sync icon appears on App
6. Perform transmit test to confirm connectivity



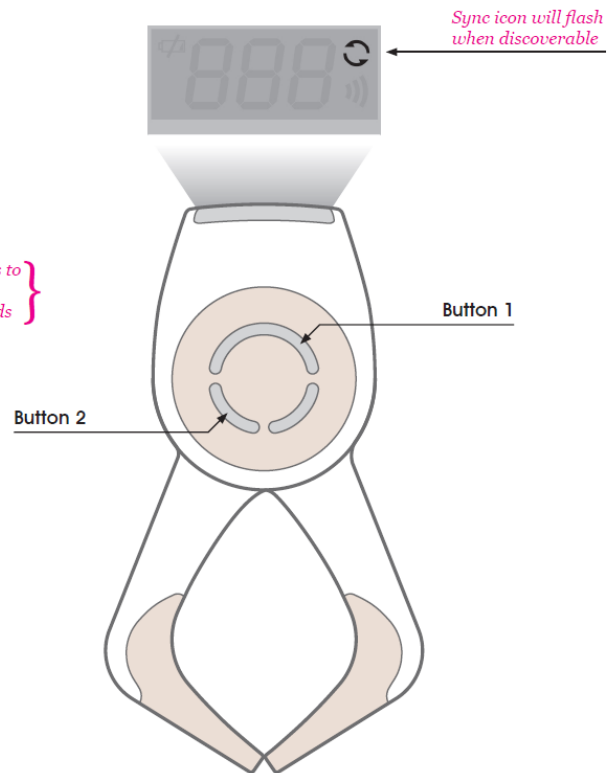
Press Sync button to wake up Bluetooth on iPad, bluetooth remains active for 60 seconds

Digi-Tape

Operational Manual

SYNCING IPAD & DIGI-TAPE

1. Press Sync button to wake up Bluetooth on iPad
2. Press and hold buttons 1+2 on Digi-Tape { hold buttons 1+2 for 5 seconds to make digi-tape discoverable, discoverability lasts 30 seconds }
3. Confirm Sync on iPad
4. Select Digi-Tape Colour on iPad
5. Check correct sync icon appears on App
6. Perform transmit test to confirm connectivity

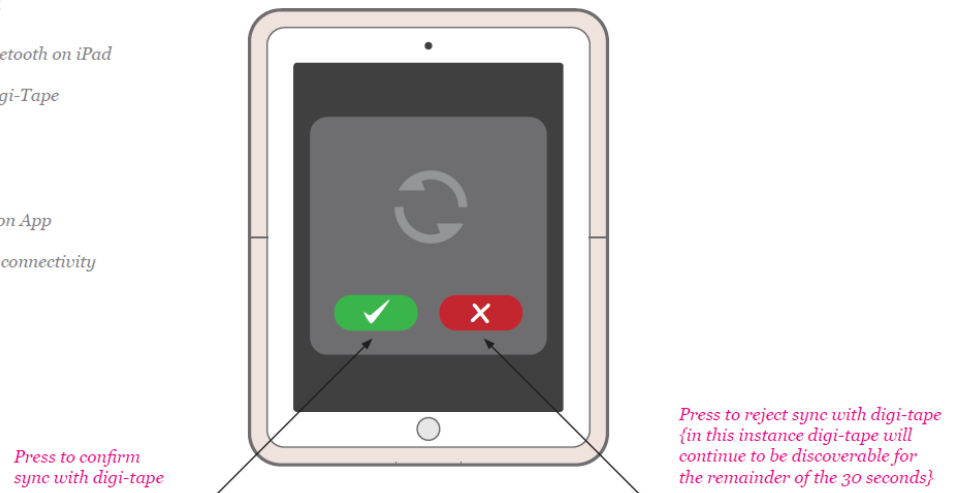


Digi-Tape

Operational Manual

SYNCING IPAD & DIGI-TAPE

1. Press Sync button to wake up Bluetooth on iPad
2. Press and hold buttons 1+2 on Digi-Tape
3. *Confirm Sync on iPad*
4. Select Digi-Tape Colour on iPad
5. Check correct sync icon appears on App
6. Perform transmit test to confirm connectivity

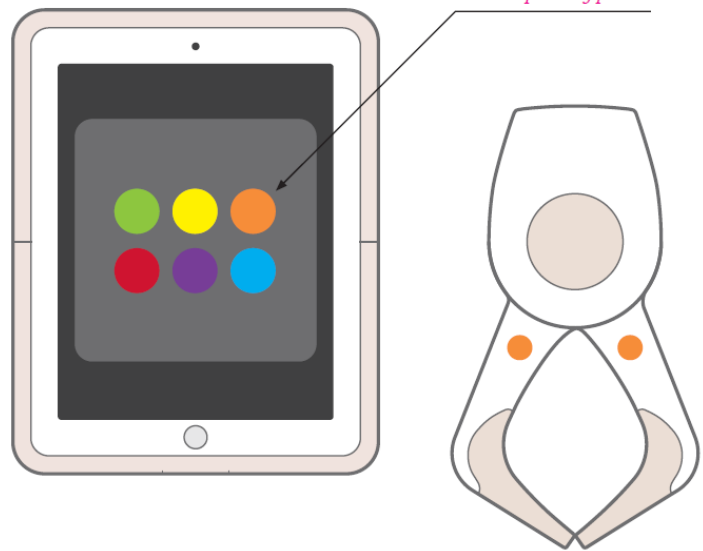


Digi-Tape

Operational Manual

SYNCING IPAD & DIGI-TAPE

1. Press Sync button to wake up Bluetooth on iPad
2. Press and hold buttons 1+2 on Digi-Tape
3. Confirm Sync on iPad
4. Select Digi-Tape Colour on iPad
5. Check correct sync icon appears on App
6. Perform transmit test to confirm connectivity

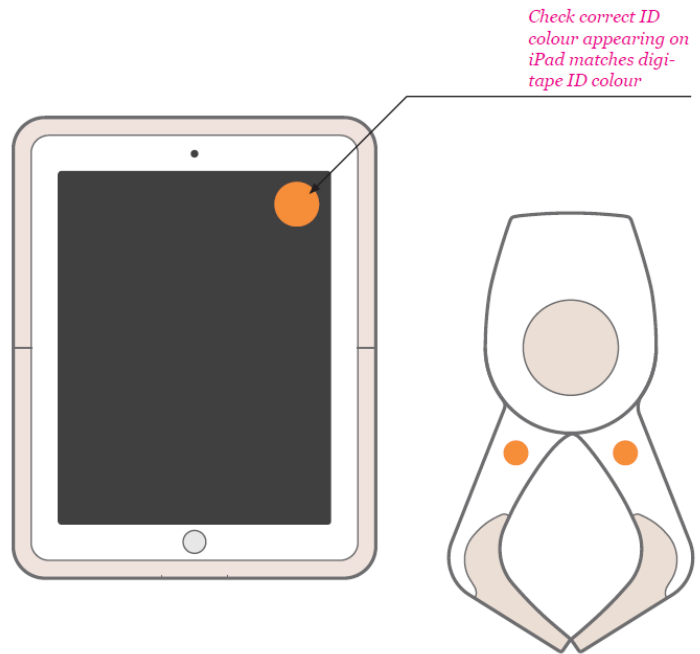


Digi-Tape

Operational Manual

SYNCING IPAD & DIGI-TAPE

1. Press Sync button to wake up Bluetooth on iPad
2. Press and hold buttons 1+2 on Digi-Tape
3. Confirm Sync on iPad
4. Select Digi-Tape Colour on iPad
5. Check correct sync icon appears on App
6. Perform transmit test to confirm connectivity

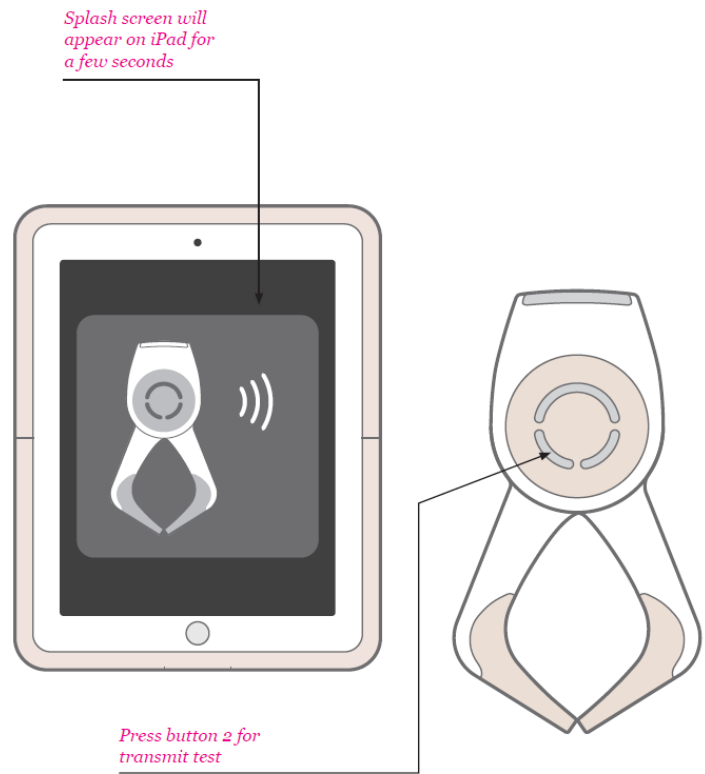


Digi-Tape

Operational Manual

SYNCING IPAD & DIGI-TAPE

1. Press Sync button to wake up Bluetooth on iPad
2. Press and hold buttons 1+2 on Digi-Tape
3. Confirm Sync on iPad
4. Select Digi-Tape Colour on iPad
5. Check correct sync icon appears on App
6. Perform transmit test to confirm connectivity



Digi-Tape

Operational Manual

DISCONNECTING IPAD & DIGI-TAPE

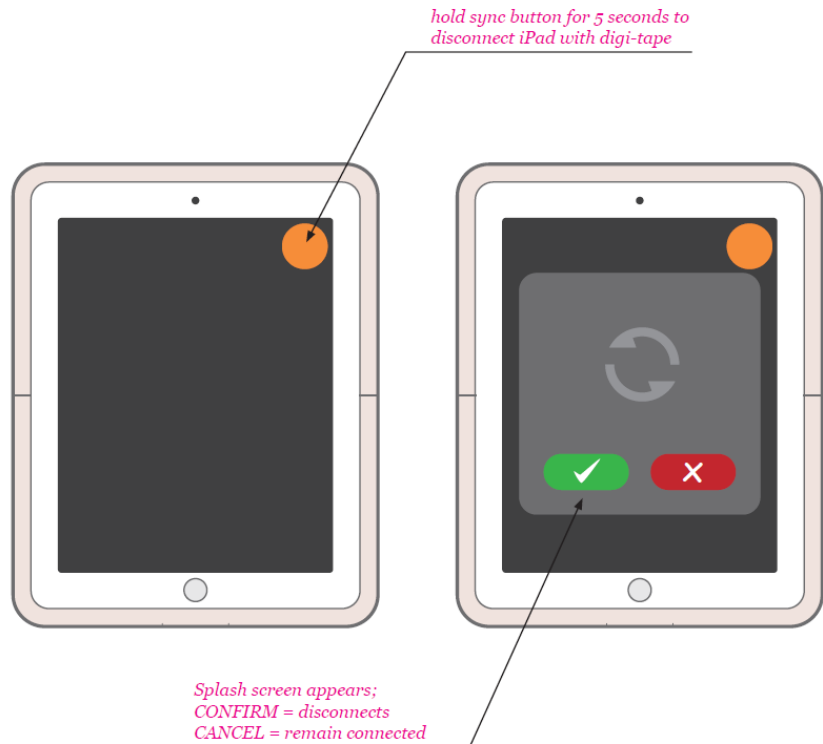
There are 2 methods for disconnecting, each is outlined below, operator will only need to perform one of these methods;

{IPAD DISCONNECT}

1. Press and hold sync button to disconnect
2. Disconnect confirmed

{DIGI-TAPE DISCONNECT}

1. Press and hold buttons 2+3 to disconnect
2. Splash screen confirms disconnect on iPad



Digi-Tape

Operational Manual

DISCONNECTING IPAD & DIGI-TAPE

There are 2 methods for disconnecting, each is outlined below, operator will only need to perform one of these methods;

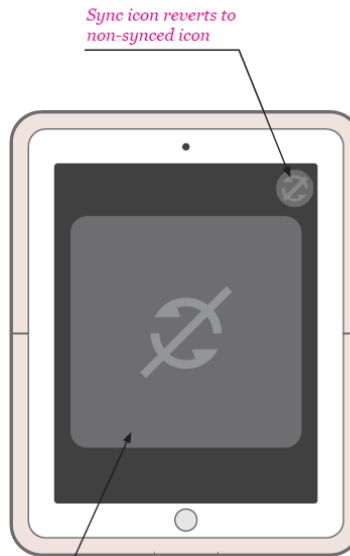
{IPAD DISCONNECT}

1. Press and hold sync button to disconnect
2. Disconnect confirmed

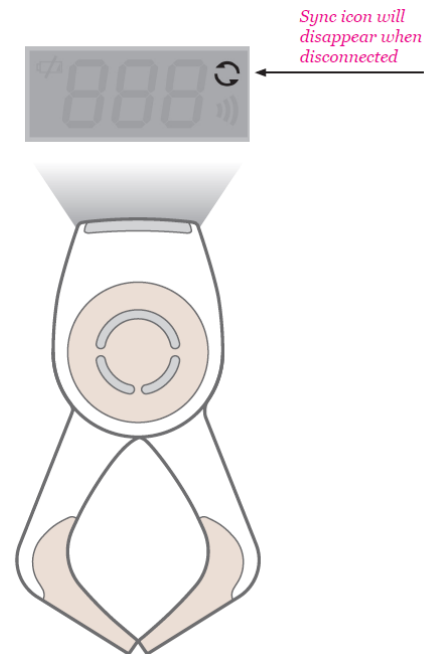
{DIGI-TAPE DISCONNECT}

1. Press and hold buttons 2+3 to disconnect
2. Splash screen confirms disconnect on iPad

Splash screen confirms disconnect



Sync icon reverts to non-synced icon



Sync icon will disappear when disconnected

Digi-Tape Operational Manual

DISCONNECTING IPAD & DIGI-TAPE

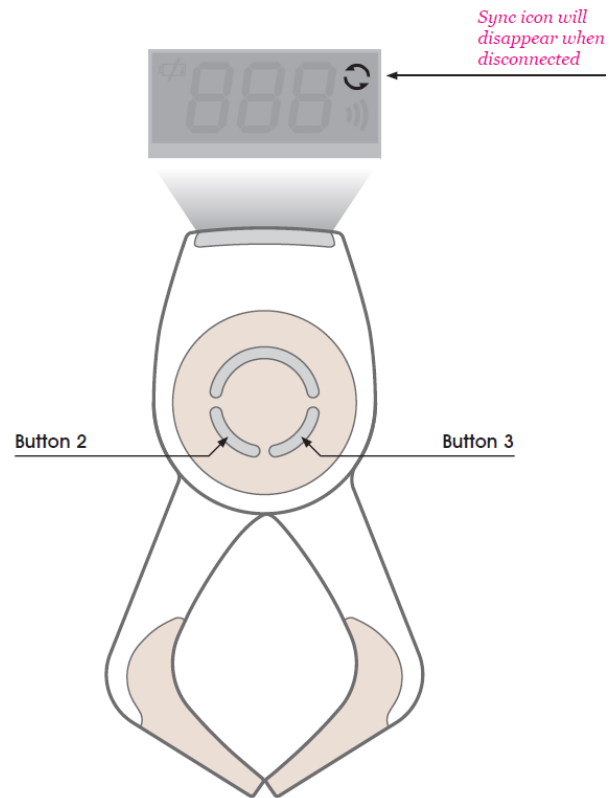
There are 2 methods for disconnecting, each is outlined below, operator will only need to perform one of these methods;

{IPAD DISCONNECT}

1. Press and hold sync button to disconnect
2. Disconnect confirmed

{DIGI-TAPE DISCONNECT}

1. Press and hold buttons 2+3 to disconnect
{ hold buttons 2+3 for 5 seconds }
to make digi-tape disconnect }
2. Splash screen confirms disconnect on iPad



Digi-Tape

Operational Manual

DISCONNECTING IPAD & DIGI-TAPE

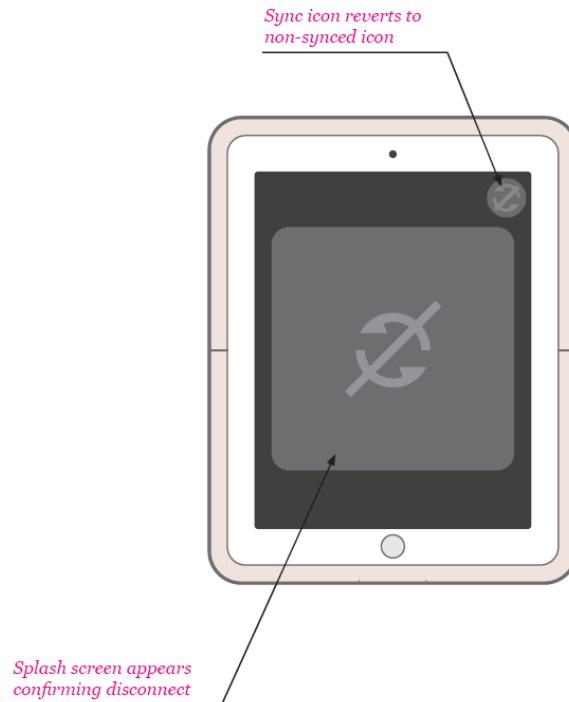
There are 2 methods for disconnecting, each is outlined below, operator will only need to perform one of these methods;

{IPAD DISCONNECT}

1. Press and hold sync button to disconnect
2. Disconnect confirmed

{DIGI-TAPE DISCONNECT}

1. Press and hold buttons 2+3 to disconnect
2. *Splash screen confirms disconnect on iPad*



Digi-Tape

Operational Manual

This device complies with Part 15 of the FCC Rules. Operation is subject to the following two conditions:

- (1) this device may not cause harmful interference, and
- (2) this device must accept any interference received, including interference that may cause undesired operation.

Changes or modifications not expressly approved by the party responsible for compliance could void the user's authority to operate the equipment.

This device complies with FCC radiation exposure limits set forth for an uncontrolled environment.

This device must not be co-located or operating in conjunction with any other antenna or transmitter.

End users must follow the specific operating instructions for satisfying RF exposure compliance.

Battery type & Voltage information:

Battery Type: CR2032

Battery Voltage: 3V

Note: This equipment has been tested and found to comply with the limits for a Class B digital device, pursuant to part 15 of the FCC Rules. These limits are designed to provide reasonable protection against harmful interference in a residential installation. This equipment generates, uses and can radiate radio frequency energy and, if not installed and used in accordance with the instructions, may cause harmful interference to radio communications. However, there is no guarantee that interference will not occur in a particular installation. If this equipment does cause harmful interference to radio or television reception, which can be determined by turning the equipment off and on, the user is encouraged to try to correct the interference by one or more of the following measures:

- Reorient or relocate the receiving antenna.
- Increase the separation between the equipment and receiver.
- Connect the equipment into an outlet on a circuit different from that to which the receiver is connected.
- Consult the dealer or an experienced radio/TV technician for help.