

OPERATING MANUAL

AGES UP
14



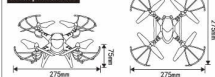
2.4Ghz

- Dear customers, thank you for you purchasing our company's quadcopter products. In order to operate this quadcopter correctly, skillfully and safely, please read the manual carefully before use and keep it for future reference.
- This product is suitable for people over 14 years. If you is a beginner, we suggest that you should be guided by someone who has experience in model operation. Any improper operation may result in personal injury and damage to the quadcopter product. This product is a four-axis quad copter, the can use gyro technology to fly indoors and outdoors. As long as the weather conditions do not allow the wind to exceed 3 levels, it can meet you flight requirements.
- This product remote control will sound the alarm when the signal is weak or the battery is low.

Safety regulations

- Please put the operator part of the quadcopter out of the reach of children to avoid accidents.
- This product is full of power when the first time flying, the left joystick should be slowly pushed up to avoid the rapid rise of the quad copter and the collision damage.
- After landing, always turn off the remote control first, then turn off the quad copter switch.
- Do not leave the battery in a hot or cold place (such as the fire or near a heating device).
- Take care that the quad copter keeps a distance of 2-3 meters from the user or other person during flight to avoid crashing into the head, face or body of other people when flying.
- When the child is manipulating the quad copter, it should be guided by the adult and ensure that the quad copter is controlled by the manipulator (instructor).
- Please pay attention of batteries polarity when you install or change batteries. Don't mix using old and new or different types batteries.
- When not in use, the remote control and the aircraft power supply should be turned off, and the battery in the remote control should be removed.
- You can not use short circuit battery.

Main parameter



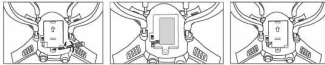
Main motor : 716
Battery : 3.7V
Charge time: about 60 minutes
Flying time: 15 minutes
Operating range: about 30m

Description of each part of controller

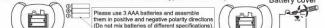


Battery installation

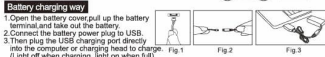
Open the bottom battery cover of the aircraft, and insert the rechargeable battery into the power socket into the battery compartment under the car. Close the battery cover and lock the screws.



Please open the battery cover in the direction of the arrow first, and then load the 3 AAAA batteries in turn according to the polarity of the battery box. (Batteries need to be purchased separately, and do not mix old and new batteries or different types of batteries).



Please use 3 AAAA batteries and assemble them in positive and negative polarity direction. (Do not mix batteries of different specifications).



Battery charging way

- Open the battery cover and put up the battery terminal and take out the battery.
- Connect the battery power plug to USB.
- Then plug the USB charging port directly into the computer or charging head to charge. (Light off when charging, light on when full).

Install ways of landing gear, blade protector and blade

- Prepare screwdriver, blades, landing gears and blade protectors.
- Insert the landing gears to landing gear holes on the bottom of quadcopter as Fig 1 show you.
- Insert the 4 units of blade protector to 4 holes which under quadcopter blades as Fig 2, and lock them tight with 4 pieces of screws.
- Every blades of the quadcopter is not the same. "A" or "B" marks on every blade. Please follow Fig 3 show you to install blades in right place. The quadcopter cannot take off, slant fly and fall down when the blades are not correct installed.



Turn on to match code

- Insert the quadcopter power plug turn on the switch, the indicator is shining. Put the quadcopter on the flat ground, then the indicator light is flash fast. In this time, the quadcopter are in matching code status.
- Press the power switch of the controller for 2 seconds and the indicator flashes. In this time, push the left joystick up to top and down to bottom. You will heard D1 sound, and indicator keeps on, you can start to play it.
- Every time you turn on or off the quadcopter, it should match code again with controller.
- The controller's power switch is switched on and off once, and the quadcopter must be re-switched with the controller pair code.

Level calibration

- Quadcopter level calibration
When the quadcopter after take-off can not be corrected by fine-tuning lead to the quadcopter hovering is operating difficulty, follow these steps to calibrate the quadcopter.

- Pull out the power of quadcopter firstly, then turn off the switch of the controller.

- Turn on the quadcopter switch, and put it on the horizontal plane, the lights of fuselage flashing.

- To open the controller power switch, push up the throttle stick to peak position, then push down to the lowest position (as Fig 1 to Fig 2). About 3 seconds later, you will hear a long sound "di", it means the quadcopter succeed to match code, and the lights of the fuselage will always on. At this time the transmitter get into level adjustment.

- Push down the throttle stick to left bottom, at the same time push down the rudder stick to right bottom (as Fig 3 show). At this point, the quad copter indicator lights is flashing, it is calibrating. If the indicator light is always on, it completed. It will at normal flight.

Tips for low tension

During in flying, the lights of quadcopter are blinking when the battery in low power. Please turn to base immediately. (It cannot flip in low tension.)



Operating direction

When the left joystick (throttle stick) is pushed up or down, the motor will speed up or slow down, the quadcopter will ascend or descend.



During flying, the right joystick is pushed up or down, and the quadcopter flies forward or backward.



During flying, the right joystick pushes left or right, the quadcopter turns left or right side flying.



Fine-tuning operation



When the quad motor in forward or backward flight, multitouch the forward backward fine-tune key, to regulate balance for the quadcopter.

When the quad copter side light to left or right, multitouch the left/right side right fine-tune key, to regulate balance for the quadcopter.

3D flip operation

In the right state, press the roll button to have the sound of "beep" and "beep", and then push down the right joystick to do the forward and backward roll.



Headless mode

Place the quadcopter in front, after the quadcopter paired with controller, press the headless mode button, at this time, the controller sound "di, di, di...". Press the headless mode button again to exit.

One key return

When the quadcopter flying, long press one key return button, the quadcopter will auto return back to base of point (it cannot auto stop). The quadcopter will lock when you push the right joystick to any direction.

Troubleshooting guide

Problem	Cause	Solution
The indicator of transmitter doesn't work	Install the batteries but doesn't follow the right polarity. Batteries are drained. Quadcopter is the direction slide of gyroscopes. Copter's code with transmitter's code is inconsistent.	Recharge the battery. Reposition the copter on the ground plans, and retested. Repeat the copter on the ground plans, and retested.

Copter is not flying high enough

Motor speed is too slow

Copter is not fully charged.

Recharge the battery.

Recharge the battery.

Recharge the battery.

Recharge the battery.

Recharge the battery.

Recharge the battery.

Recharge the battery.

Recharge the battery.

Recharge the battery.

Recharge the battery.

Recharge the battery.

Recharge the battery.

Recharge the battery.

Recharge the battery.

Recharge the battery.

Recharge the battery.

Recharge the battery.

Recharge the battery.

Recharge the battery.

Recharge the battery.

Recharge the battery.

Recharge the battery.

Recharge the battery.

Recharge the battery.

Recharge the battery.

Recharge the battery.

Recharge the battery.

Recharge the battery.

Recharge the battery.

Recharge the battery.

Recharge the battery.

Recharge the battery.

Recharge the battery.

Recharge the battery.

Recharge the battery.

Recharge the battery.

Recharge the battery.

Recharge the battery.

Recharge the battery.

Recharge the battery.

Recharge the battery.

Recharge the battery.

Recharge the battery.

Recharge the battery.

FCC WARNING:

This device complies with part 15 of the FCC Rules. Operation is subject to the following two conditions:
(1) This device may not cause harmful interference, and (2) this device must accept any interference received, including interference that may cause undesired operation. Any changes or modifications not expressly approved by the party responsible for compliance could void the user's authority to operate the equipment.

Note:

This equipment has been tested and found to comply with the limits for a Class B digital device, pursuant to part 15 of the FCC Rules. These limits are designed to provide reasonable protection against harmful interference in a residential installation.

This equipment generates uses and can radiate radio frequency energy and, if not installed and used in accordance with the instructions, may cause harmful interference to radio communications. However, there is no guarantee that interference will not occur in a particular installation. If this equipment does cause harmful interference to radio or television reception, which can be determined by turning the equipment off and on, the user is encouraged to try to correct the interference by one or more of the following measures:

-Reorient or relocate the receiving antenna.

-Increase the separation between the equipment and receiver.

-Connect the equipment into an outlet on a circuit different from that to which the receiver is connected.

-Consult the dealer or an experienced radio/TV technician for help.

RF warning for Portable device:

The device has been evaluated to meet general RF exposure requirement. The device can be used in portable exposure condition without restriction.