

**CFR 47 FCC PART 15 SUBPART C
ISED RSS-247 ISSUE 2 (DTS)**

TEST REPORT

For

Nanoleaf Smater IQ antaxy Art Display Case

MODEL NUMBER: SQFX01K

FCC ID: 2AEWY-SQFX01

IC: 20489- SQFX01

REPORT NUMBER: E01A23050514F00101

ISSUE DATE: July 31, 2023

Prepared for

**NANOGRID LIMITED
Room 1301, 13/F, Excel Centre, 483A Castle Peak Road, Lai Chi Kok, Kowloon,
HONG KONG**

Prepared by

Dong Guan Anci Electronic Technology Co., Ltd.

**1-2 Floor, Building A, No.11, Headquarters 2 Road, Songshan, Lake Hi-
tech Industrial Development Zone, Dongguan City, Guangdong Pr.,
China.**

**This report shall not be reproduced, except in full, without the written approval of
Dong Guan Anci Electronic Technology Co., Ltd.**

Revision History

<u>Rev.</u>	<u>Issue Date</u>	<u>Revisions</u>	<u>Revised By</u>
<u>V0</u>	<u>July 31, 2023</u>	<u>Initial Issue</u>	<u>Duke</u>

Summary of Test Results			
Test Item	Clause	Limit/Requirement	Result
Antenna Requirement	N/A	FCC Part 15.203/15.247 (c) RSS-GEN Clause 6.8	Pass
AC Power Line Conducted Emission	ANSI C63.10-2013, Clause 6.2	FCC Part 15.207 RSS-GEN Clause 8.8	Pass
Conducted Output Power	ANSI C63.10-2013, Clause 11.9.1.3	FCC Part 15.247 (b)(3) RSS-247 Clause 5.4 (d)	Pass
6dB Bandwidth and 99% Occupied Bandwidth	ANSI C63.10-2013, Clause 11.8.1	FCC Part 15.247 (a)(2) RSS-247 Clause 5.2 (a) ISED RSS-Gen Clause 6.7	Pass
Power Spectral Density	ANSI C63.10-2013, Clause 11.10.2	FCC Part 15.247 (e) RSS-247 Clause 5.2 (b)	Pass
Conducted Band edge and spurious emission	ANSI C63.10-2013, Clause 11.11	FCC Part 15.247(d) RSS-247 Clause 5.5	Pass
Radiated Band edge and Spurious Emission	ANSI C63.10-2013, Clause 11.11 & Clause 11.12	FCC Part 15.247 (d) FCC Part 15.205/15.209 RSS-247 Clause 5.5 RSS-GEN Clause 8.9	Pass
Duty Cycle	ANSI C63.10-2013, Clause 11.6	None; for reporting purposes only.	Pass

*The measurement result for the sample received is <Pass> according to <CFR 47 FCC PART 15 SUBPART C ISED RSS-247 ISSUE 2 (DTS)> when <Accuracy Method> decision rule is applied.

CONTENTS

1. ATTESTATION OF TEST RESULTS.....	5
2. TEST METHODOLOGY.....	6
3. FACILITIES AND ACCREDITATION.....	6
4. CALIBRATION AND UNCERTAINTY	7
4.1. <i>MEASURING INSTRUMENT CALIBRATION</i>	<i>7</i>
4.2. <i>MEASUREMENT UNCERTAINTY.....</i>	<i>7</i>
5. EQUIPMENT UNDER TEST	8
5.1. <i>DESCRIPTION OF EUT</i>	<i>8</i>
5.2. <i>CHANNEL LIST</i>	<i>8</i>
5.3. <i>MAXIMUM AVERAGE EIRP</i>	<i>9</i>
5.4. <i>TEST CHANNEL CONFIGURATION.....</i>	<i>9</i>
5.5. <i>THE WORSE CASE POWER SETTING PARAMETER.....</i>	<i>9</i>
5.6. <i>DESCRIPTION OF AVAILABLE ANTENNAS</i>	<i>10</i>
5.7. <i>SUPPORT UNITS FOR SYSTEM TEST.....</i>	<i>10</i>
5.8. <i>SETUP DIAGRAM</i>	<i>10</i>
6. MEASURING EQUIPMENT AND SOFTWARE USED.....	11
7. ANTENNA PORT TEST RESULTS	12
7.1. <i>Conducted Output Power.....</i>	<i>12</i>
7.2. <i>6dB Bandwidth and 99% Occupied Bandwidth</i>	<i>13</i>
7.3. <i>Power Spectral Density.....</i>	<i>15</i>
7.4. <i>Conducted Band edge and spurious emission</i>	<i>16</i>
7.5. <i>Duty Cycle</i>	<i>18</i>
8. RADIATED TEST RESULTS.....	19
9. ANTENNA REQUIREMENT	36
10. AC POWER LINE CONDUCTED EMISSION	37
11. TEST DATA.....	40
APPENDIX: PHOTOGRAPHS OF TEST CONFIGURATION	41
APPENDIX: PHOTOGRAPHS OF THE EUT	43

1. ATTESTATION OF TEST RESULTS

Applicant Information

Company Name: NANOGRID LIMITED
 Address: Room 1301, 13/F, Excel Centre, 483A Castle Peak Road, Lai Chi Kok, Kowloon, HONG KONG

Manufacturer Information

Company Name: NANOGRID LIMITED
 Address: Room 1301, 13/F, Excel Centre, 483A Castle Peak Road, Lai Chi Kok, Kowloon, HONG KONG

EUT Information

EUT Name: Nanoleaf Smater IQ antaxy Art Display Case
 Model: SQFX01K
 Brand: Nanoleaf, Fantaqi
 Sample Received Date: May 29, 2023
 Sample Status: Normal
 Sample ID: A23050514 001
 Date of Tested: May 29, 2023 to July 31, 2023

APPLICABLE STANDARDS	
STANDARD	TEST RESULTS
CFR 47 FCC PART 15 SUBPART C ISED RSS-247 ISSUE 2 (DTS)	Pass

Prepared By:

Duke

Duke Liu
Project Engineer

Checked By:

Dyson

Dyson Dai
Project Engineer

Approved By:

Tiger Xu

Tiger Xu
Laboratory Supervisor



2. TEST METHODOLOGY

All tests were performed in accordance with the standard CFR 47 FCC PART 15 SUBPART C
ISED RSS-247 ISSUE 2 (DTS)

3. FACILITIES AND ACCREDITATION

Site Description

Name of Firm : Dong Guan Anci Electronic Technology Co., Ltd.
Site Location : 1-2 Floor, Building A, No.11, Headquarters 2 Road, Songshan,
Lake Hi-tech Industrial Development Zone, Dongguan
City, evelopment Zone, Dongguan City, Guangdong Pr., China.

4. CALIBRATION AND UNCERTAINTY

4.1. MEASURING INSTRUMENT CALIBRATION

The measuring equipment utilized to perform the tests documented in this report has been calibrated in accordance with the manufacturer's recommendations and is traceable to recognized national standards.

4.2. MEASUREMENT UNCERTAINTY

Where relevant, the following measurement uncertainty levels have been estimated for tests performed on the apparatus:

Where relevant, the following measurement uncertainty levels have been estimated for tests performed on the apparatus:

Test Item	Measurement Frequency Range	K	U(dB)
Conducted emissions from the AC mains power ports	0.009 MHz ~ 0.15 MHz	2	4.00
Conducted emissions from the AC mains power ports	0.15 MHz ~ 30 MHz	2	3.62
Radiated emissions	9kHz ~ 30MHz	2	2.20
Radiated emissions	30 MHz ~ 1 GHz	2	3.16
Radiated emissions	1 GHz ~ 18 GHz	2	5.64

Note: This uncertainty represents an expanded uncertainty expressed at approximately the 95% confidence level using a coverage factor of k=2.

5. EQUIPMENT UNDER TEST

5.1. DESCRIPTION OF EUT

EUT Name		Nanoleaf Smater IQ antaxy Art Display Case
Model		SQFX01K
EUT Classification		Class B
Internal Frequency		2500MHz
Ratings		100-240VAC,50/60Hz,7W
Power Supply	AC	120V/60Hz
Hardware version		1.0
Software version		1.0.1

Frequency Band:	2400 MHz to 2483.5 MHz
Frequency Range:	2412 MHz to 2462 MHz
Support Standards:	IEEE 802.11b, IEEE 802.11g, IEEE 802.11n-HT20, IEEE 802.11n-HT40
Type of Modulation:	IEEE 802.11b: DSSS(CCK, DQPSK, DBPSK) IEEE 802.11g/n: OFDM(64-QAM, 16-QAM, QPSK, BPSK)
Data Rate:	IEEE 802.11b: Up to 11 Mbps IEEE 802.11g: Up to 54 Mbps IEEE 802.11n: Up to MCS7
Number of Channels:	IEEE 802.11b/g/n-HT20: 11 IEEE 802.11n-HT40: 7
Maximum Peak Power:	IEEE 802.11b: 15.51 dBm IEEE 802.11g: 13.67dBm IEEE 802.11n-HT20: 13.56 dBm IEEE 802.11n-HT40: 13.31 dBm
Antenna Type:	PCB Antenna
Antenna Gain:	2.15 dBi

5.2. CHANNEL LIST

Channel List for 802.11b/g/n (20 MHz)							
Channel	Frequency (MHz)	Channel	Frequency (MHz)	Channel	Frequency (MHz)	Channel	Frequency (MHz)
1	2412	4	2427	7	2442	10	2457
2	2417	5	2432	8	2447	11	2462
3	2422	6	2437	9	2452	/	/

Channel List for 802.11n (40 MHz)							
Channel	Frequency (MHz)	Channel	Frequency (MHz)	Channel	Frequency (MHz)	Channel	Frequency (MHz)
3	2422	5	2432	7	2442	9	2452
4	2427	6	2437	8	2447	/	/

5.3. MAXIMUM AVERAGE EIRP

IEEE Std. 802.11	Frequency (MHz)	Channel Number	Maximum Conducted AVG Output Power (dBm)	Maximum AVG EIRP (dBm)
b	2412 ~ 2462	1-11[11]	15.51	17.65
g	2412 ~ 2462	1-11[11]	13.67	16.36
n HT20	2412 ~ 2462	1-11[11]	13.56	16.18
n HT40	2422 ~ 2452	3-9[7]	13.31	15.45

5.4. TEST CHANNEL CONFIGURATION

IEEE Std. 802.11	Test Channel Number	Frequency
b	CH 1(Low Channel), CH 6(MID Channel), CH 11(High Channel)	2412 MHz, 2437 MHz, 2462 MHz
g	CH 1(Low Channel), CH 6(MID Channel), CH 11(High Channel)	2412 MHz, 2437 MHz, 2462 MHz
n HT20	CH 1(Low Channel), CH 6(MID Channel), CH 11(High Channel)	2412 MHz, 2437 MHz, 2462 MHz
n HT40	CH 3(Low Channel), CH 6(MID Channel), CH 9(High Channel)	2422 MHz, 2437 MHz, 2452 MHz

5.5. THE WORSE CASE POWER SETTING PARAMETER

The Worse Case Power Setting Parameter under 2400 ~ 2483.5MHz Band							
Test Software		MT7688 QA Tool					
Modulation Mode	Transmit Antenna Number	Test Channel					
		NCB: 20MHz			NCB: 40MHz		
		CH 1	CH 6	CH 11	CH 3	CH 6	CH 9
802.11b	1	20	20	20			
802.11g	1	20	20	20			
802.11n HT20	1	20	20	20			
802.11n HT40	1				20	20	20

WORST-CASE CONFIGURATIONS

The EUT was tested in the following configuration(s):

Controlled in test mode using a software application on the EUT supplied by customer. The application was used to enable a continuous transmission and to select the mode, test channels, bandwidth, data rates as required.

Test channels referring to section 5.4.

Maximum power setting referring to section 5.5.

Worst-case data rates as provided by the client were:

802.11b mode: 1 Mbps

TRF No.: 01-R005-3A

Global Testing , Great Quality.

802.11g mode: 6 Mbps
 802.11n HT20 mode: MCS0
 802.11n HT40 mode: MCS0

The measured additional path loss was included in any path loss calculations for all RF cable used during tested.

5.6. DESCRIPTION OF AVAILABLE ANTENNAS

Antenna	Frequency (MHz)	Antenna Type	MAX Antenna Gain (dBi)
1	2412-2462	PCB	2.15

Test Mode	Transmit and Receive Mode	Description
IEEE 802.11b	<input checked="" type="checkbox"/> 1TX, 1RX	ANT 1 can be used as transmitting/receiving antenna.
IEEE 802.11g	<input checked="" type="checkbox"/> 1TX, 1RX	ANT 1 can be used as transmitting/receiving antenna.
IEEE 802.11n HT20	<input checked="" type="checkbox"/> 1TX, 1RX	ANT 1 can be used as transmitting/receiving antenna.
IEEE 802.11n HT40	<input checked="" type="checkbox"/> 1TX, 1RX	ANT 1 can be used as transmitting/receiving antenna.

Note: (declared by client)

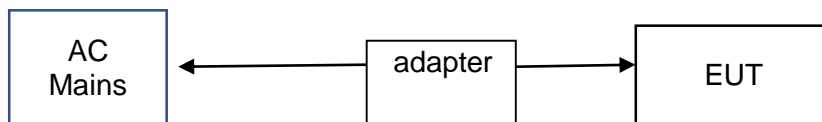
Note: The value of the antenna gain was declared by customer.

5.7. SUPPORT UNITS FOR SYSTEM TEST

The EUT has been tested as an independent unit

Equipment	Manufacturer	Model No.
adapter	Fantaqi	DSL-42WA-42

5.8. SETUP DIAGRAM



6. MEASURING EQUIPMENT AND SOFTWARE USED

Test Equipment of Conducted RF					
Equipment	Manufacturer	Model No.	Serial No.	Last Cal.	Due Date
Spectrum Analyzer	Rohde & Schwarz	FSV40	US40240623	2022-10-29	2023-10-28
RF Test Software	MWRF-test	MTS 8310	N/A	N/A	N/A
Radio Frequency control box	MWRF-test	MW200-RFCB	MW220111 ANCI	2023/5/11	2024/5/10
Radio Frequency control box	MWRF-test	MW200-RFCB 2#	/	2023/5/11	2024/5/10

Test Equipment of Radiated emissions below 1GHz					
Equipment	Manufacturer	Model No.	Serial No.	Last Cal.	Due Date
EMI Test Receiver	ROHDE&SCHWARZ	ESCI	100302	2023/5/11	2024/5/10
Bilog Antenna	Schwarzbeck	VULB9163	VULB9163-1290	2022/12/12	2023/12/11
RF Cable	ZKJC	ZT06S-NJ-NJ-11M	19060398	2023/5/11	2024/5/10
RF Cable	ZKJC	ZT06S-NJ-NJ-0.5M	19060400	2023/5/11	2024/5/10
RF Cable	ZKJC	ZT06S-NJ-NJ-2.5M	19060404	2023/5/11	2024/5/10
EMI Test Receiver	ROHDE&SCHWARZ	ESPI7	100502	2022/10/8	2023/10/7
3m Semi-anechoic Chamber	Keysight	9m*6m*6m	N/A	2021/11/13	2024/11/12

Test Equipment of Radiated emissions above 1GHz					
Equipment	Manufacturer	Model No.	Serial No.	Last Cal.	Due Date
Low noise Amplifiers	A-INFO	LA1018N4009	J1013130524001	2023/5/11	2024/5/10
Horn antenna	A-INFO	LB-10180-SF	J2031090612123	2023/5/11	2024/5/10
RF Cable	ZKJC	ZT26-NJ-NJ-11M	19060401	2023/5/11	2024/5/10
RF Cable	ZKJC	ZT26-NJ-NJ-2.5M	19060402	2023/5/11	2024/5/10
RF Cable	ZKJC	ZT26-NJ-NJ-0.5M	19060403	2023/5/11	2024/5/10
Spectrum Analyzer	Rohde & Schwarz	FSV40	US40240623	2022-10-29	2023-10-28
3m Semi-anechoic Chamber	Keysight	9m*6m*6m	N/A	2021/11/13	2024/11/12
Test Software	Farad	EZ-EMC (Ver.FA-03A2RE)	N/A	N/A	N/A

Test Equipment of Conducted emissions					
Equipment	Manufacturer	Model No.	Serial No.	Last Cal.	Due Date
EMI Test Receiver	ROHDE&SCH WARZ	ESCI	101358	2023/5/11	2024/5/10
1# Shielded Room	chengyu	8m*4m*3.3m	N/A	2022/11/22	2025/11/21
LISN	ROHDE&SCH WARZ	ENV216	101413	2022/10/8	2023/10/7
Test Software	Farad	EZ-EMC (Ver.ANCI-3A1)	N/A	N/A	N/A
RF Cable	N/A	ZT06S-NJ-NJ-2.5M	19044022	2023/5/11	2024/5/10

7. ANTENNA PORT TEST RESULTS

7.1. CONDUCTED OUTPUT POWER

LIMITS

CFR 47 FCC Part15 (15.247) Subpart C ISED RSS-247 ISSUE 2			
Section	Test Item	Limit	Frequency Range (MHz)
CFR 47 FCC 15.247(b)(3) ISED RSS-247 5.4 (d)	Peak Conduct Output Power	1 watt or 30 dBm	2400-2483.5

TEST PROCEDURE

Connect the EUT to a low loss RF cable from the antenna port to the power sensor (video bandwidth is greater than the occupied bandwidth).

Measure peak emission level, the indicated level is the peak output power, after any corrections for external attenuators and cables.

TEST ENVIRONMENT

Temperature	24°C	Relative Humidity	55%
Atmosphere Pressure	101kPa		

TEST RESULTS

Please refer to section "Test Data" - Appendix A

7.2. 6DB BANDWIDTH AND 99% OCCUPIED BANDWIDTH

LIMITS

CFR 47 FCC Part15 (15.247) Subpart C ISED RSS-247 ISSUE 2			
Section	Test Item	Limit	Frequency Range (MHz)
CFR 47 FCC 15.247(a)(2) ISED RSS-247 5.2 (a)	6 dB Bandwidth	≥ 500 kHz	2400-2483.5
ISED RSS-Gen Clause 6.7	99 % Occupied Bandwidth	For reporting purposes only.	2400-2483.5

TEST PROCEDURE

Refer to ANSI C63.10-2013 clause 11.8 for DTS bandwidth and clause 6.9 for Occupied Bandwidth.

Connect the EUT to the spectrum analyser and use the following settings:

Center Frequency	The center frequency of the channel under test
Frequency Span	For 6 dB Bandwidth: Enough to capture all products of the modulation carrier emission For 99 % Occupied Bandwidth: Between 1.5 times and 5.0 times the OBW
Detector	Peak
RBW	For 6 dB Bandwidth: 100 kHz For 99 % Occupied Bandwidth: 1 % to 5 % of the occupied bandwidth
VBW	For 6 dB Bandwidth: ≥3 × RBW For 99 % Occupied Bandwidth: ≥3 × RBW
Trace	Max hold
Sweep	Auto couple

a) Use the 99 % power bandwidth function of the instrument, allow the trace to stabilize and report the measured bandwidth.

b) Allow the trace to stabilize and measure the maximum width of the emission that is constrained by the frequencies associated with the two outermost amplitude points (upper and lower frequencies) that are attenuated by 6 dB relative to the maximum level measured in the fundamental emission.

TEST ENVIRONMENT

Temperature	24°C	Relative Humidity	55%
Atmosphere Pressure	101kPa		

TEST RESULTS

Please refer to section "Test Data" - Appendix A

7.3. POWER SPECTRAL DENSITY

LIMITS

CFR 47 FCC Part15 (15.247) Subpart C ISED RSS-247 ISSUE 2			
Section	Test Item	Limit	Frequency Range (MHz)
CFR 47 FCC §15.247 (e) ISED RSS-247 5.2 (b)	Power Spectral Density	8 dBm in any 3 kHz band	2400-2483.5

TEST PROCEDURE

Refer to ANSI C63.10-2013 clause 11.10.

Connect the EUT to the spectrum analyser and use the following settings:

Center Frequency	The center frequency of the channel under test
Detector	PEAK
RBW	$3 \text{ kHz} \leq \text{RBW} \leq 100 \text{ kHz}$
VBW	$\geq 3 \times \text{RBW}$
Span	1.5 x DTS bandwidth
Trace	Max hold
Sweep time	Auto couple

Allow trace to fully stabilize and use the peak marker function to determine the maximum amplitude level within the RBW.

If measured value exceeds limit, reduce RBW (no less than 3 kHz) and repeat.

TEST ENVIRONMENT

Temperature	24°C	Relative Humidity	55%
Atmosphere Pressure	101kPa		

TEST RESULTS

Please refer to section "Test Data" - Appendix A

7.4. CONDUCTED BAND EDGE AND SPURIOUS EMISSION

LIMITS

CFR 47 FCC Part15 (15.247) Subpart C ISED RSS-247 ISSUE 2		
Section	Test Item	Limit
CFR 47 FCC §15.247 (d) ISED RSS-247 5.5	Conducted Bandedge and Spurious Emissions	at least 20 dB below that in the 100 kHz bandwidth within the band that contains the highest level of the desired power

TEST PROCEDURE

Refer to ANSI C63.10-2013 clause 11.11 and 11.13.

Connect the EUT to the spectrum analyser and use the following settings for reference level measurement:

Center Frequency	The center frequency of the channel under test
Detector	Peak
RBW	100 kHz
VBW	$\geq 3 \times \text{RBW}$
Span	1.5 x DTS bandwidth
Trace	Max hold
Sweep time	Auto couple.

Allow trace to fully stabilize and use the peak marker function to determine the maximum PSD level.

Change the settings for emission level measurement:

Span	Set the center frequency and span to encompass frequency range to be measured
Detector	Peak
RBW	100 kHz
VBW	$\geq 3 \times \text{RBW}$
measurement points	$\geq \text{span}/\text{RBW}$
Trace	Max hold
Sweep time	Auto couple.

Allow trace to fully stabilize and use the peak marker function to determine the maximum PSD level. Ensure that the amplitude of all unwanted emissions outside of the authorized frequency band (excluding restricted frequency bands) is attenuated by at least the minimum requirements specified in 11.11.

TEST ENVIRONMENT

Temperature	24°C	Relative Humidity	55%
Atmosphere Pressure	101kPa		

TEST RESULTS

Please refer to section "Test Data" - Appendix A

7.5. DUTY CYCLE

LIMITS

None; for reporting purposes only.

TEST PROCEDURE

Refer to ANSI C63.10-2013 clause 11.6 Zero – Span Spectrum Analyzer method.

TEST ENVIRONMENT

Temperature	24°C	Relative Humidity	55%
Atmosphere Pressure	101kPa		

TEST RESULTS

Please refer to section "Test Data" - Appendix A

8. RADIATED TEST RESULTS

LIMITS

Please refer to CFR 47 FCC §15.205 and §15.209.

Please refer to ISED RSS-GEN Clause 8.9 and Clause 8.10.

Radiation Disturbance Test Limit for FCC (Class B) (9 kHz ~ 1 GHz)

Emissions radiated outside of the specified frequency bands above 30 MHz			
Frequency Range (MHz)	Field Strength Limit (uV/m) at 3 m	Field Strength Limit (dBuV/m) at 3 m	
		Quasi-Peak	
30 - 88	100	40	
88 - 216	150	43.5	
216 - 960	200	46	
Above 960	500	54	
Above 1000	500	Peak	Average
		74	54

FCC Emissions radiated outside of the specified frequency bands below 30 MHz		
Frequency (MHz)	Field strength (microvolts/meter)	Measurement distance (meters)
0.009-0.490	2400/F(kHz)	300
0.490-1.705	24000/F(kHz)	30
1.705-30.0	30	30

ISED General field strength limits at frequencies below 30 MHz

Table 6 – General field strength limits at frequencies below 30 MHz		
Frequency	Magnetic field strength (H-Field) (µA/m)	Measurement distance (m)
9 - 490 kHz ^{Note 1}	6.37/F (F in kHz)	300
490 - 1705 kHz	63.7/F (F in kHz)	30
1.705 - 30 MHz	0.08	30

Note 1: The emission limits for the ranges 9-90 kHz and 110-490 kHz are based on measurements employing a linear average detector.

ISED Restricted bands please refer to ISED RSS-GEN Clause 8.10

Table 7 – Restricted frequency bands ^{Note 1}		
MHz	MHz	GHz
0.090 - 0.110	149.9 - 150.05	9.0 - 9.2
0.495 - 0.505	156.52475 - 156.52525	9.3 - 9.5
2.1735 - 2.1905	156.7 - 156.9	10.6 - 12.7
3.020 - 3.026	162.0125 - 167.17	13.25 - 13.4
4.125 - 4.128	167.72 - 173.2	14.47 - 14.5
4.17725 - 4.17775	240 - 285	15.35 - 16.2
4.20725 - 4.20775	322 - 335.4	17.7 - 21.4
5.677 - 5.683	399.9 - 410	22.01 - 23.12
6.215 - 6.218	608 - 614	23.6 - 24.0
6.26775 - 6.26825	960 - 1427	31.2 - 31.8
6.31175 - 6.31225	1435 - 1626.5	36.43 - 36.5
8.291 - 8.294	1645.5 - 1646.5	Above 38.6
8.362 - 8.366	1660 - 1710	
8.37625 - 8.38675	1718.8 - 1722.2	
8.41425 - 8.41475	2200 - 2300	
12.29 - 12.293	2310 - 2390	
12.51975 - 12.52025	2483.5 - 2500	
12.57675 - 12.57725	2655 - 2900	
13.36 - 13.41	3260 - 3267	
16.42 - 16.423	3332 - 3339	
16.80475 - 16.80525	3345.8 - 3358	
16.80425 - 16.80475	3500 - 4400	
25.5 - 25.67	4500 - 5150	
37.5 - 38.25	5350 - 5460	
73 - 74.6	7250 - 7750	
74.8 - 75.2	8025 - 8500	
108 - 138		

Note 1: Certain frequency bands listed in table 7 and in bands above 38.6 GHz are designated for licence-exempt applications. These frequency bands and the requirements that apply to related devices are set out in the 200 and 300 series of RSSs.

FCC Restricted bands of operation refer to FCC §15.205 (a):

MHz	MHz	MHz	GHz
0.090-0.110	16.42-16.423	399.9-410	4.5-5.15
¹ 0.495-0.505	16.69475-16.69525	608-614	5.35-5.46
2.1735-2.1905	16.80425-16.80475	960-1240	7.25-7.75
4.125-4.128	25.5-25.67	1300-1427	8.025-8.5
4.17725-4.17775	37.5-38.25	1435-1626.5	9.0-9.2
4.20725-4.20775	73-74.6	1645.5-1646.5	9.3-9.5
6.215-6.218	74.8-75.2	1660-1710	10.6-12.7
6.26775-6.26825	108-121.94	1718.8-1722.2	13.25-13.4
6.31175-6.31225	123-138	2200-2300	14.47-14.5
8.291-8.294	149.9-150.05	2310-2390	15.35-16.2
8.362-8.366	156.52475-156.52525	2483.5-2500	17.7-21.4
8.37625-8.38675	156.7-156.9	2690-2900	22.01-23.12
8.41425-8.41475	162.0125-167.17	3260-3267	23.6-24.0
12.29-12.293	167.72-173.2	3332-3339	31.2-31.8
12.51975-12.52025	240-285	3345.8-3358	36.43-36.5
12.57675-12.57725	322-335.4	3600-4400	(²)
13.36-13.41			

Note: ¹Until February 1, 1999, this restricted band shall be 0.490-0.510 MHz.

²Above 38.6c

TEST PROCEDURE

Below 30 MHz

The setting of the spectrum analyser

RBW	200 Hz (From 9 kHz to 0.15 MHz)/ 9 kHz (From 0.15 MHz to 30 MHz)
VBW	200 Hz (From 9 kHz to 0.15 MHz)/ 9 kHz (From 0.15 MHz to 30 MHz)
Sweep	Auto

1. The testing follows the guidelines in ANSI C63.10-2013 clause 6.4.
2. The EUT was arranged to its worst case and then turntable (from 0 degree to 360 degrees) to find the maximum reading. A pre-amp and a high pass filter are used for the test in order to get better signal level. Both Horizontal, Face-on and Face-off polarizations of the antenna are set to make the measurement.
3. The EUT was placed on a turntable with 80 cm above ground.
4. The EUT was set 3 meters from the interference receiving antenna, which was mounted on the top of a 1 m height antenna tower.
5. The radiated emission limits are based on measurements employing a CISPR quasi-peak detector except for the frequency bands 9-90 kHz, 110-490 kHz and above 1000 MHz Radiated emission limits in these three bands are based on measurements employing an average detector.
6. For measurement below 1 GHz, the initial step in collecting conducted emission data is a spectrum analyzer peak detector mode pre-scanning the measurement frequency range. Significant peaks are then marked and then Quasi Peak and average detector mode re-measured. If the emission level of the EUT measured by the peak detector is 3 dB lower than the applicable limit, the peak emission level will be reported. Otherwise, the emission measurement will be repeated using the quasi-peak and average detector and reported.
7. Although these tests were performed other than open field site, adequate comparison measurements were confirmed against 30m open field site. Therefore sufficient tests were made to demonstrate that the alternative site produces results that correlate with the ones of tests made in an open field site based on KDB 414788.
8. The limits in CFR 47, Part 15, Subpart C, paragraph 15.209 (a), are identical to those in RSS-GEN Section 8.9, Table 6, since the measurements are performed in terms of magnetic field strength and converted to electric field strength levels (as reported in the table) using the free space impedance of 377Ω . For example, the measurement frequency X KHz resulted in a level of Y dBuV/m, which is equivalent to $Y-51.5 = Z$ dBuA/m, which has the same margin, W dB, to the corresponding RSS-GEN Table 6 limit as it has to be 15.209(a) limit.

Below 1 GHz and above 30 MHz

The setting of the spectrum analyser

RBW	120 kHz
VBW	300 kHz
Sweep	Auto
Detector	Peak/QP
Trace	Max hold

1. The testing follows the guidelines in ANSI C63.10-2013 clause 6.5.

2. The EUT was arranged to its worst case and then tune the antenna tower (from 1 m to 4 m) and turntable (from 0 degree to 360 degrees) to find the maximum reading. A pre-amp and a high pass filter are used for the test in order to get better signal level. Both horizontal and vertical polarizations of the antenna are set to make the measurement.
3. The EUT was placed on a turntable with 80 cm above ground.
4. The EUT was set 3 meters from the interference receiving antenna, which was mounted on the top of a variable height antenna tower.
5. For measurement below 1 GHz, the initial step in collecting conducted emission data is a spectrum analyzer peak detector mode pre-scanning the measurement frequency range. Significant peaks are then marked and then Quasi Peak detector mode re-measured. If the emission level of the EUT measured by the peak detector is 3 dB lower than the applicable limit, the peak emission level will be reported. Otherwise, the emission measurement will be repeated using the quasi-peak detector and reported.

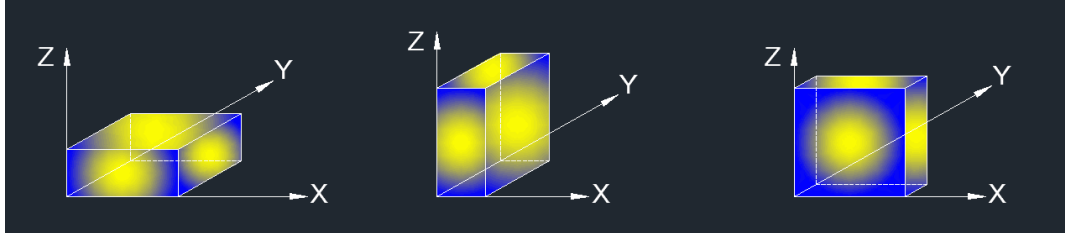
Above 1G

The setting of the spectrum analyser

RBW	1 MHz
VBW	PEAK: 3 MHz AVG: see note 6
Sweep	Auto
Detector	Peak
Trace	Max hold

1. The testing follows the guidelines in ANSI C63.10-2013 clause 6.6.
2. The EUT was arranged to its worst case and then tune the antenna tower (from 1 m to 4 m) and turntable (from 0 degree to 360 degrees) to find the maximum reading. A pre-amp and a high pass filter are used for the test in order to get better signal level. Both horizontal and vertical polarizations of the antenna are set to make the measurement.
3. The EUT was placed on a turntable with 1.5 m above ground.
4. The EUT was set 3 meters from the interference receiving antenna, which was mounted on the top of a variable height antenna tower.
5. For measurement above 1 GHz, the emission measurement will be measured by the peak detector. This peak level, once corrected, must comply with the limit specified in Section 15.209.
6. For measurements above 1 GHz the resolution bandwidth is set to 1 MHz, then the video bandwidth is set to 3 MHz for peak measurements and 1 MHz resolution bandwidth with 1/T video bandwidth with peak detector for average measurements. For the Duty Cycle please refer to clause 7.1.ON TIME AND DUTY CYCLE.

X axis, Y axis, Z axis positions:



Note 1: For all radiated test, EUT in each of three orthogonal axis emissions had been tested, but only the worst case (X axis) data recorded in the report.

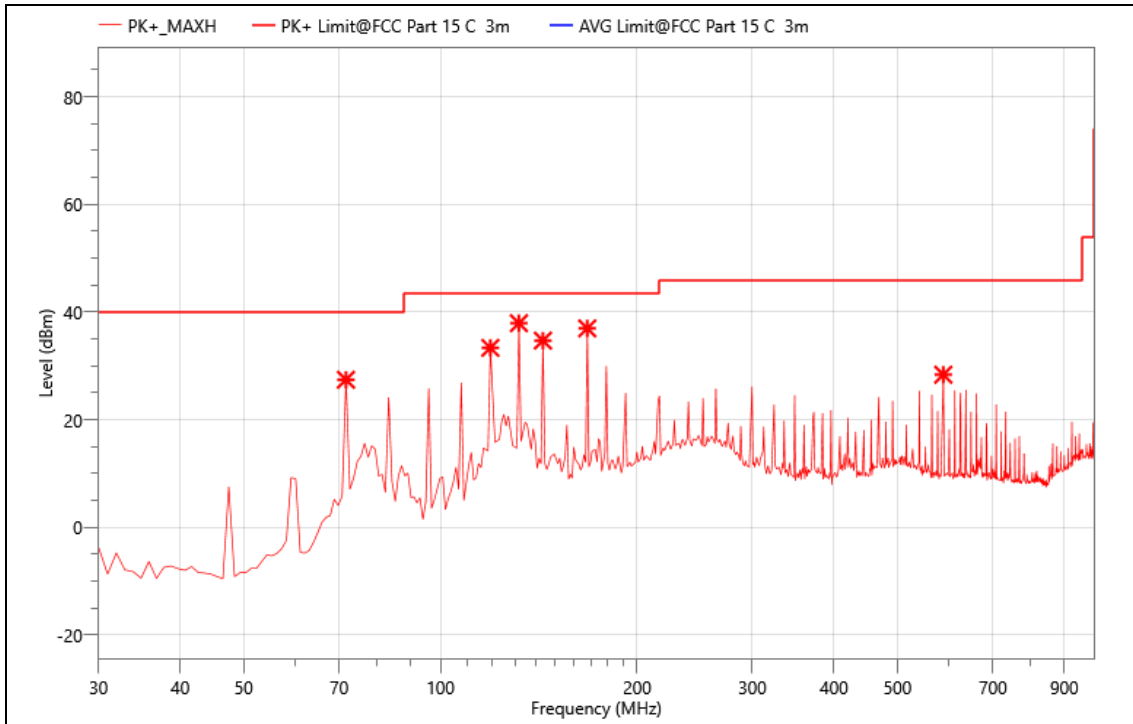
TEST ENVIRONMENT

Temperature	26°C	Relative Humidity	54%
Atmosphere Pressure	101kPa		

TEST RESULTS

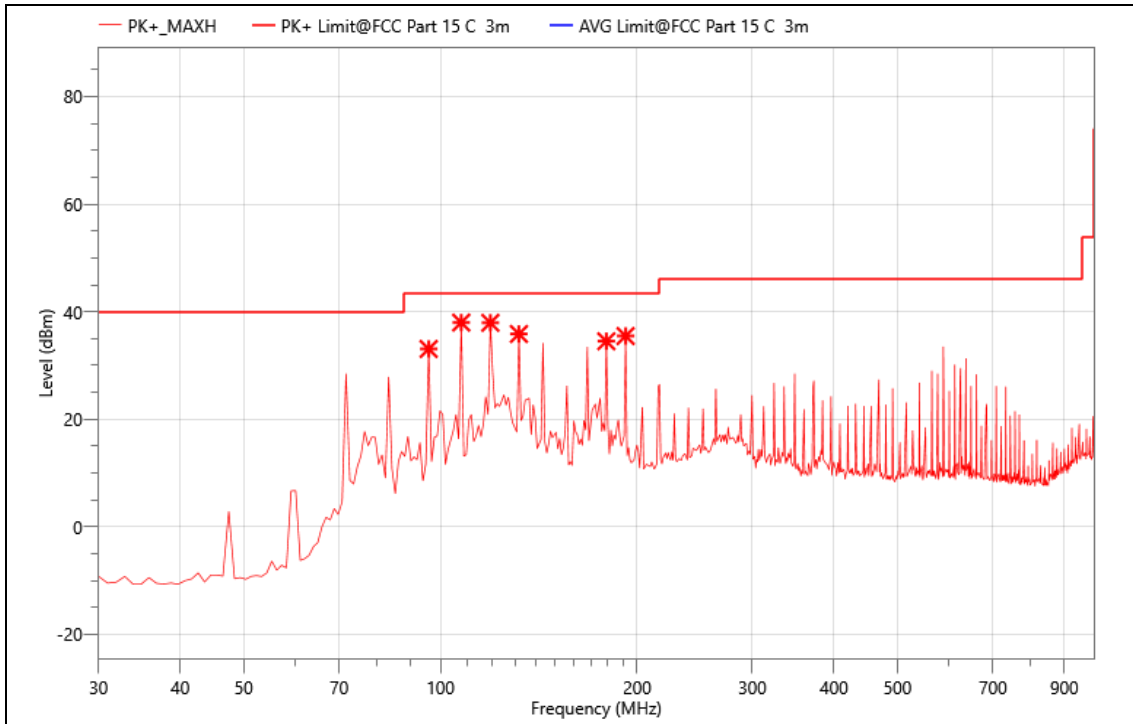
Radiated Spurious Emission :

The worst data of the mode (802.11b 2462MHz) are recorded in the following pages



Critical_Freqs

No.	Freq. (MHz)	Reading (dBμV)	Meas. (dBm)	Limit (dBm)	Margin (dBm)	Det.	Height (cm)	Pol.	Azimuth (deg)	Corr. (dB)
1	71.710	59.06	27.44	40.00	12.56	PK+	150.0	V	0.1	-
2	119.240	58.56	33.36	43.50	10.14	PK+	150.0	V	0.1	-25.2
3	131.850	62.07	37.95	43.50	5.55	PK+	150.0	V	0.1	-
4	143.490	57.91	34.71	43.50	8.79	PK+	150.0	V	0.1	-23.2
5	167.740	58.61	36.98	43.50	6.52	PK+	150.0	V	0.1	-
6	587.750	46.65	28.37	46.00	17.63	PK+	150.0	V	0.1	-



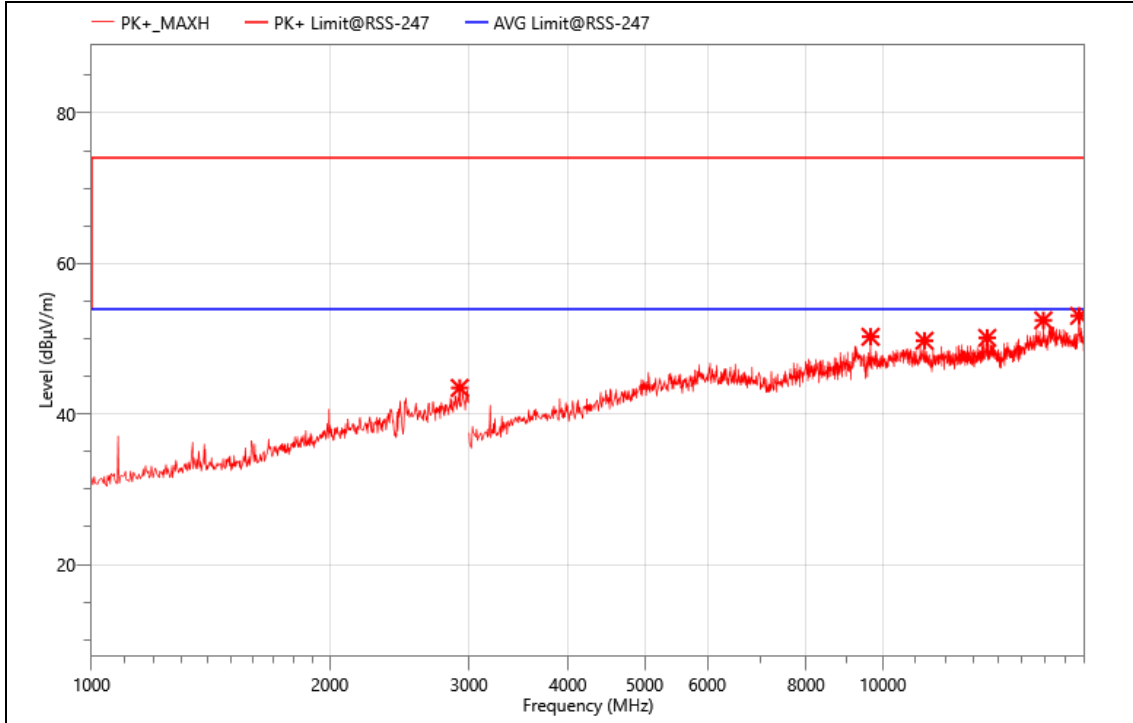
Critical_Freqs

No.	Freq. (MHz)	Reading (dBμV)	Meas. (dBm)	Limit (dBm)	Margin (dBm)	Det.	Height (cm)	Pol.	Azimuth (deg)	Corr. (dB)
1	95.960	60.36	33.09	43.50	10.41	PK+	150.0	H	360.0	-
2	107.600	64.32	37.99	43.50	5.51	PK+	150.0	H	360.0	-
3	119.240	63.15	37.95	43.50	5.55	PK+	150.0	H	360.0	-25.2
4	131.850	59.99	35.87	43.50	7.63	PK+	150.0	H	360.0	-
5	179.380	55.25	34.52	43.50	8.98	PK+	150.0	H	360.0	-
6	191.990	56.17	35.49	43.50	8.01	PK+	150.0	H	360.0	-

Above 1000MHz~10th Harmonics:

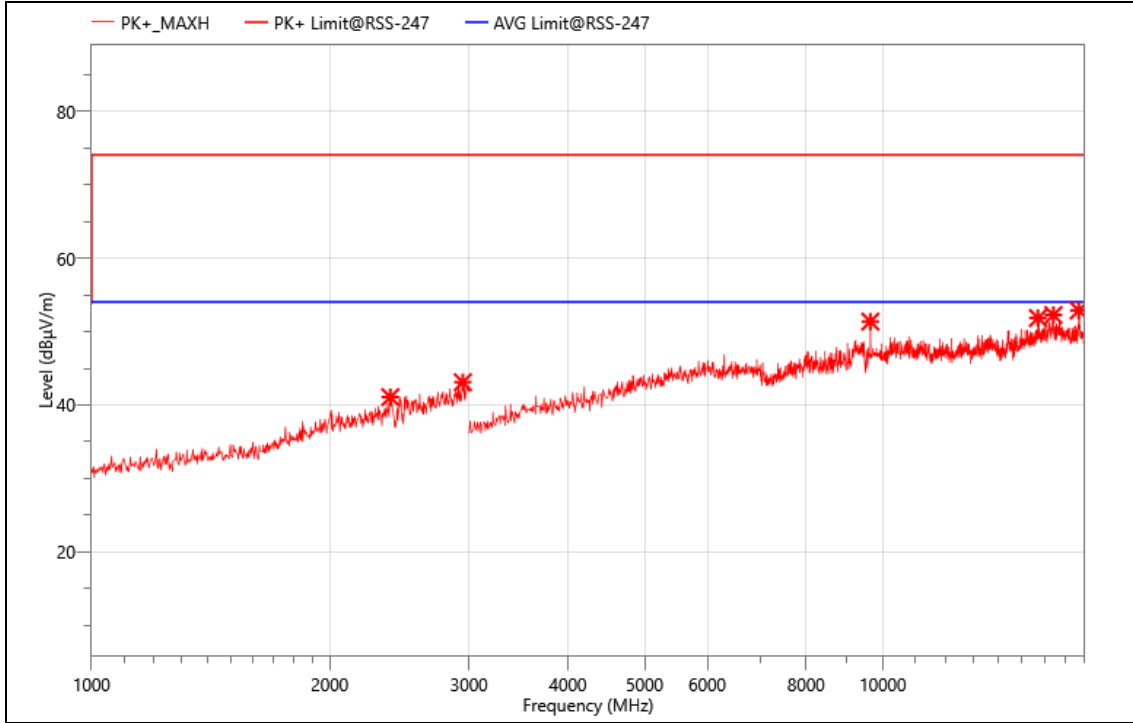
All the modulation modes were tested the data of the worst mode (TX 802.11b) are recorded in the following pages and the others modulation methods do not exceed the limits. The frequency range from 1GHz to 25GHz is investigated.

Mode: TX2412



Critical_Freqs

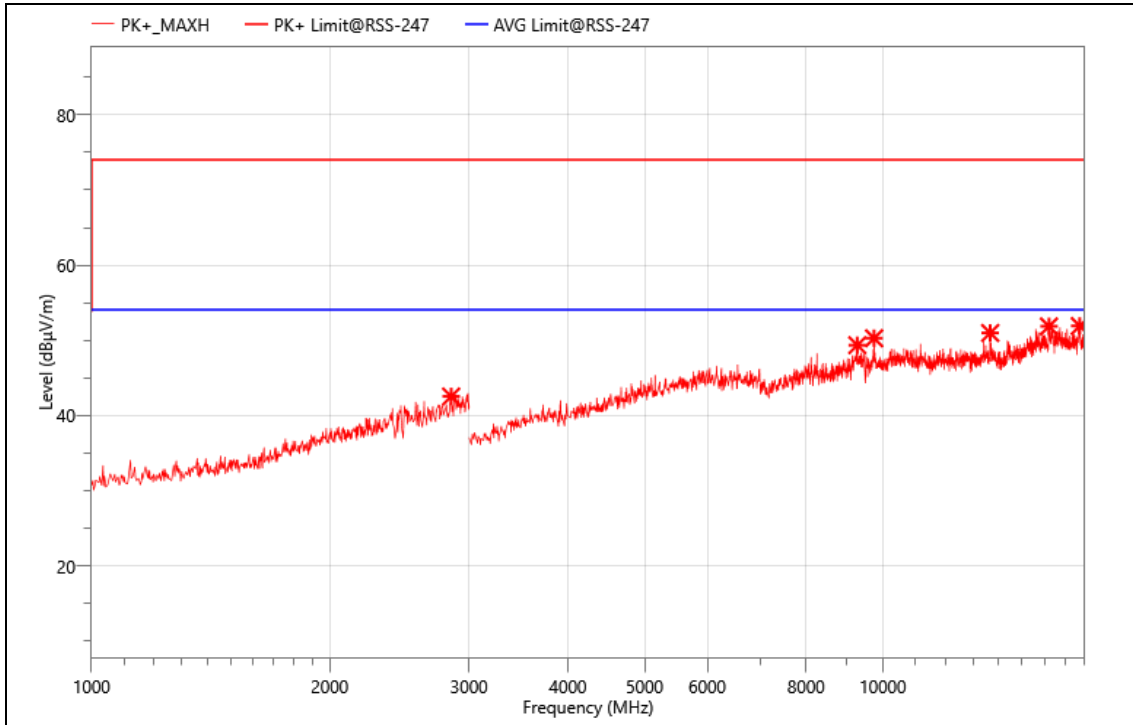
No.	Freq. (MHz)	Reading (dBµV)	Meas. (dBµV/m)	Limit (dBµV/m)	Margin (dBµV/m)	Det.	Height (cm)	Pol.	Azimuth (deg)	Corr. (dB)
1	2920.000	53.58	43.47	74.00	30.53	PK+	150.0	V	360.0	-
2	9650.000	51.18	50.26	74.00	23.74	PK+	150.0	V	360.0	-0.92
3	11290.000	49.65	49.74	74.00	24.26	PK+	150.0	V	360.0	0.09
4	13555.000	48.49	50.12	74.00	23.88	PK+	150.0	V	360.0	1.63
5	15960.000	49.01	52.45	74.00	21.55	PK+	150.0	V	360.0	3.44
6	17710.000	48.48	53.04	74.00	20.96	PK+	150.0	V	360.0	4.56



Critical_Freqs

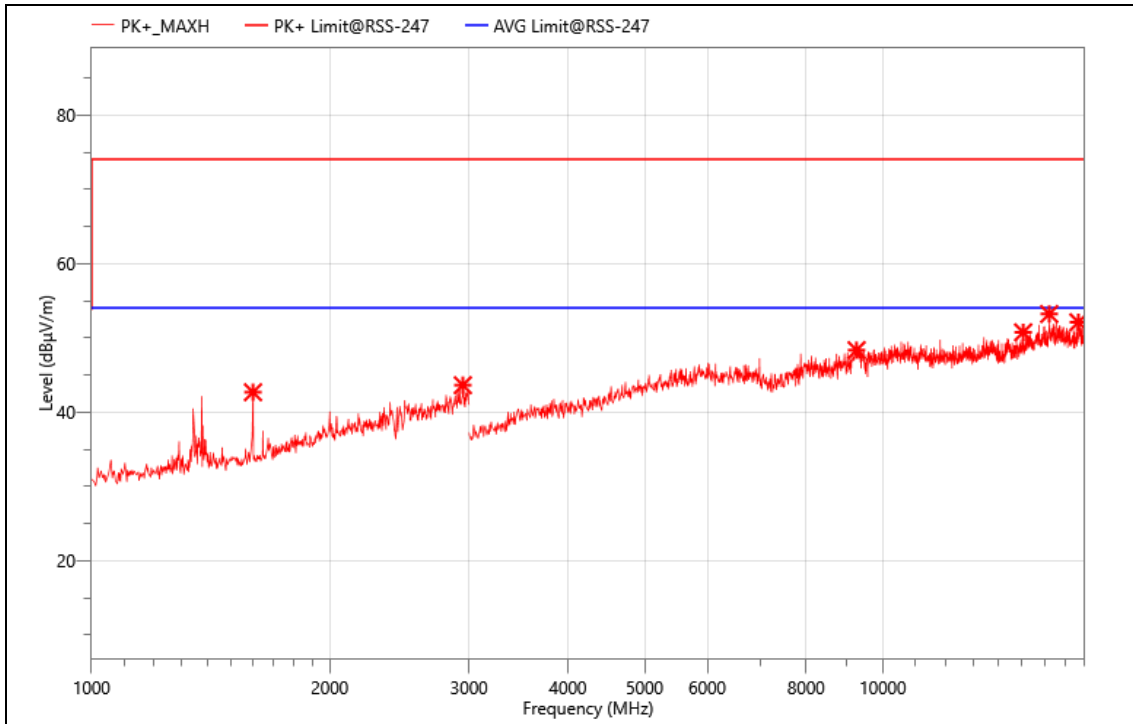
No.	Freq. (MHz)	Reading (dBµV)	Meas. (dBµV/m)	Limit (dBµV/m)	Margin (dBµV/m)	Det.	Height (cm)	Pol.	Azimuth (deg)	Corr. (dB)
1	2386.000	52.74	41.09	74.00	32.91	PK+	150.0	H	359.9	-
2	2946.000	53.00	43.12	74.00	30.88	PK+	150.0	H	359.9	-9.88
3	9645.000	52.21	51.37	74.00	22.63	PK+	150.0	H	359.9	-0.84
4	15710.000	48.82	51.85	74.00	22.15	PK+	150.0	H	359.9	3.03
5	16430.000	48.38	52.27	74.00	21.73	PK+	150.0	H	359.9	3.89
6	17690.000	47.97	52.88	74.00	21.12	PK+	150.0	H	359.9	4.91

Mode: TX2437



Critical_Freqs

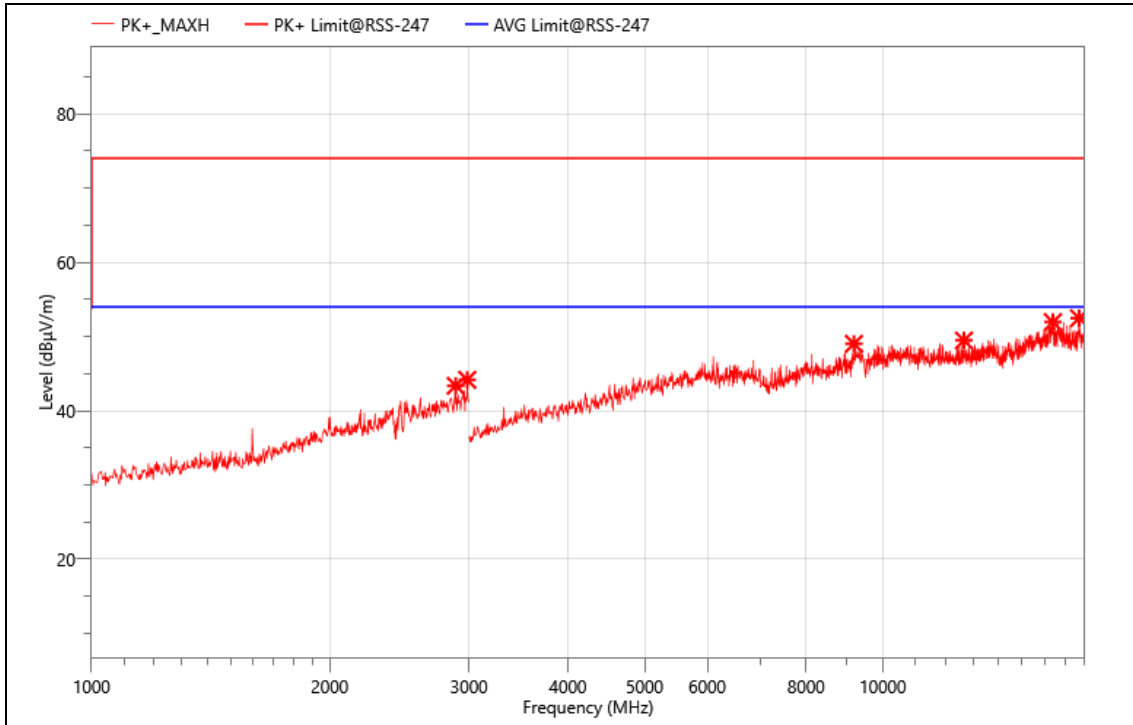
No.	Freq. (MHz)	Reading (dBµV)	Meas. (dBµV/m)	Limit (dBµV/m)	Margin (dBµV/m)	Det.	Height (cm)	Pol.	Azimuth (deg)	Corr. (dB)
1	2848.000	53.08	42.55	74.00	31.45	PK+	150.0	H	360.0	-
2	9285.000	50.02	49.37	74.00	24.63	PK+	150.0	H	360.0	-0.65
3	9750.000	51.23	50.29	74.00	23.71	PK+	150.0	H	360.0	-0.94
4	13670.000	48.51	50.99	74.00	23.01	PK+	150.0	H	360.0	2.48
5	16220.000	47.61	51.87	74.00	22.13	PK+	150.0	H	360.0	4.26
6	17740.000	47.79	51.92	74.00	22.08	PK+	150.0	H	360.0	4.13



Critical_Freqs

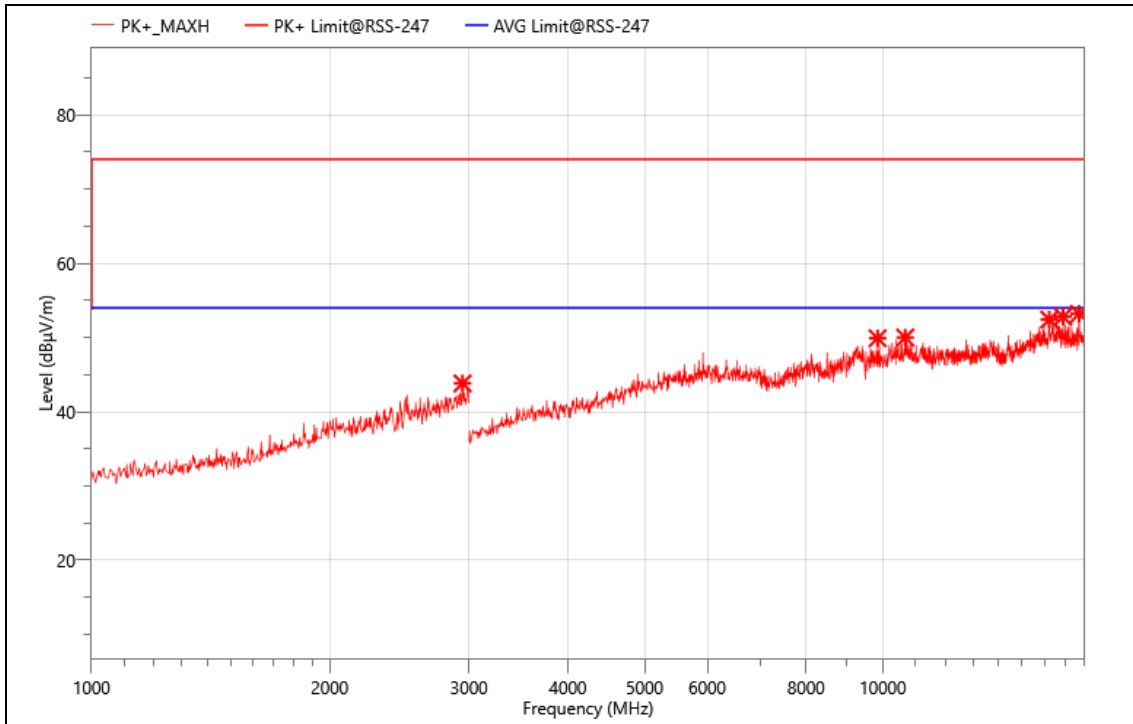
No.	Freq. (MHz)	Reading (dBµV)	Meas. (dBµV/m)	Limit (dBµV/m)	Margin (dBµV/m)	Det.	Height (cm)	Pol.	Azimuth (deg)	Corr. (dB)
1	1600.000	59.88	42.69	74.00	31.31	PK+	150.0	V	360.0	-
2	2946.000	53.52	43.64	74.00	30.36	PK+	150.0	V	360.0	-9.88
3	9265.000	48.94	48.36	74.00	25.64	PK+	150.0	V	360.0	-0.58
4	15045.000	48.72	50.76	74.00	23.24	PK+	150.0	V	360.0	2.04
5	16230.000	48.95	53.22	74.00	20.78	PK+	150.0	V	360.0	4.27
6	17670.000	47.43	52.11	74.00	21.89	PK+	150.0	V	360.0	4.68

Mode: TX2462



Critical_Freqs

No.	Freq. (MHz)	Reading (dBµV)	Meas. (dBµV/m)	Limit (dBµV/m)	Margin (dBµV/m)	Det.	Height (cm)	Pol.	Azimuth (deg)	Corr. (dB)
1	2886.000	53.71	43.37	74.00	30.63	PK+	150.0	V	360.0	-
2	2984.000	53.53	44.17	74.00	29.83	PK+	150.0	V	360.0	-9.36
3	9195.000	49.84	49.03	74.00	24.97	PK+	150.0	V	360.0	-0.81
4	12665.000	48.93	49.48	74.00	24.52	PK+	150.0	V	360.0	0.55
5	16405.000	47.76	51.96	74.00	22.04	PK+	150.0	V	360.0	4.2
6	17705.000	47.82	52.48	74.00	21.52	PK+	150.0	V	360.0	4.66

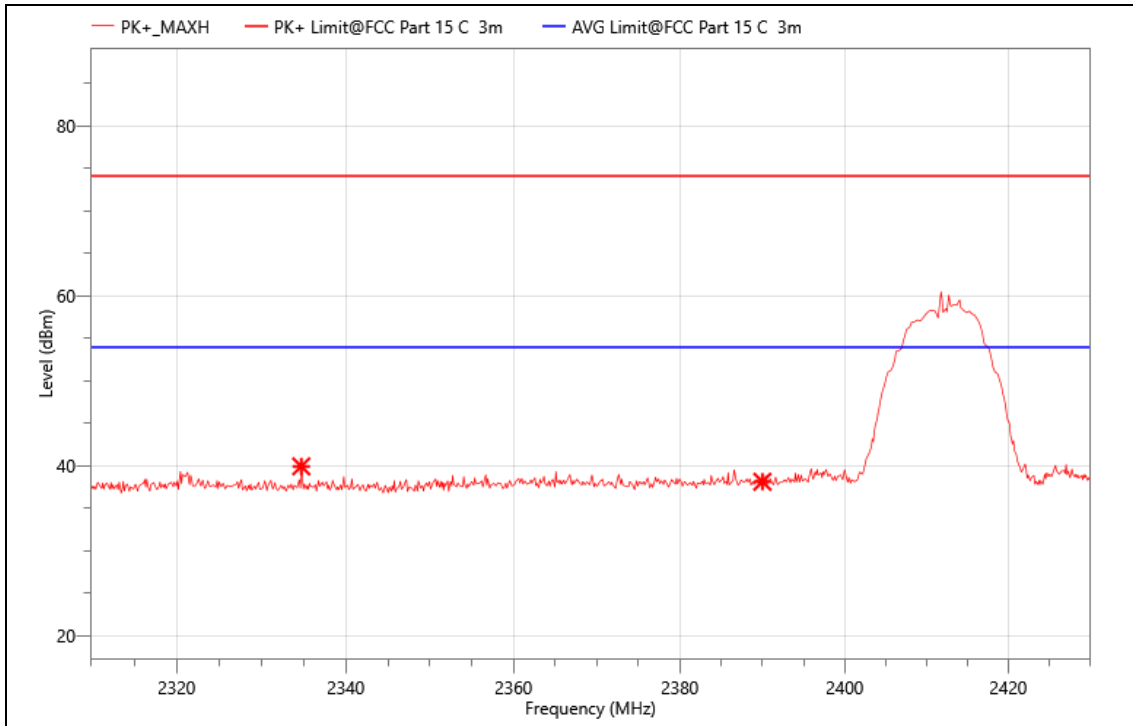


Critical_Freqs

No.	Freq. (MHz)	Reading (dBµV)	Meas. (dBµV/m)	Limit (dBµV/m)	Margin (dBµV/m)	Det.	Height (cm)	Pol.	Azimuth (deg)	Corr. (dB)
1	2944.000	53.72	43.82	74.00	30.18	PK+	150.0	H	0.0	-9.9
2	9850.000	51.54	49.91	74.00	24.09	PK+	150.0	H	0.0	-
3	10675.000	50.16	50.01	74.00	23.99	PK+	150.0	H	0.0	-
4	16235.000	48.15	52.42	74.00	21.58	PK+	150.0	H	0.0	4.27
5	16900.000	48.53	52.81	74.00	21.19	PK+	150.0	H	0.0	4.28
6	17705.000	48.54	53.20	74.00	20.80	PK+	150.0	H	0.0	4.66

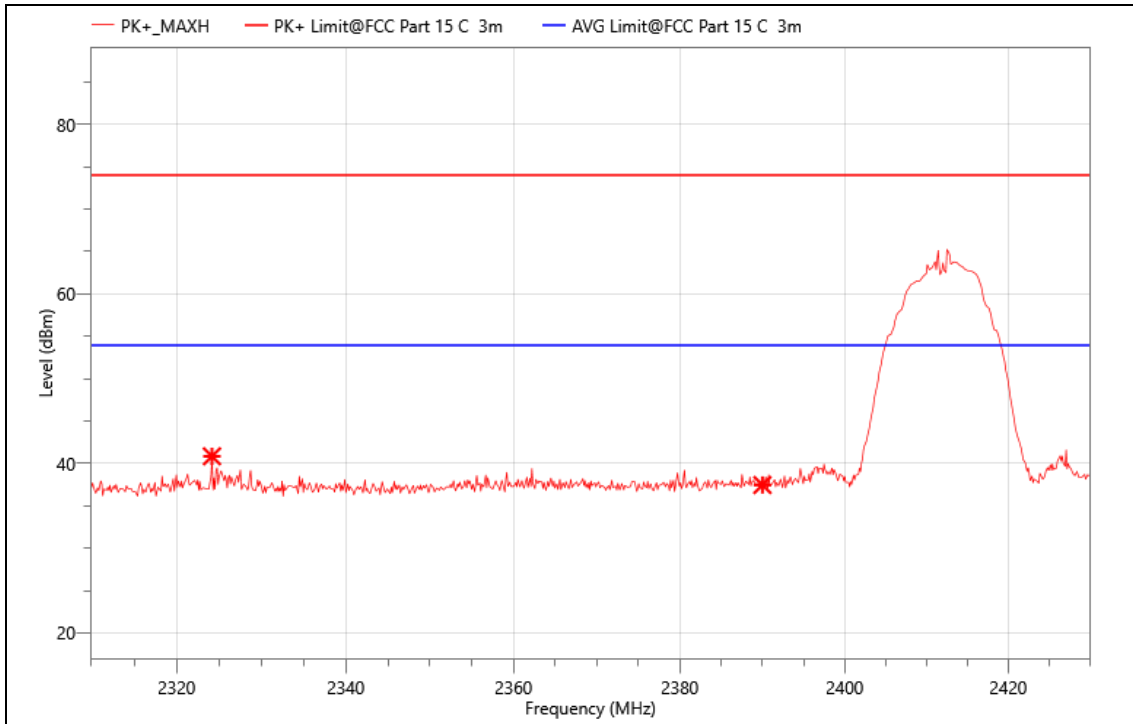
Band edge:

The worst data of the mode TX 802.11b are recorded in the following pages.
 Mode: TX2412



Critical_Freqs

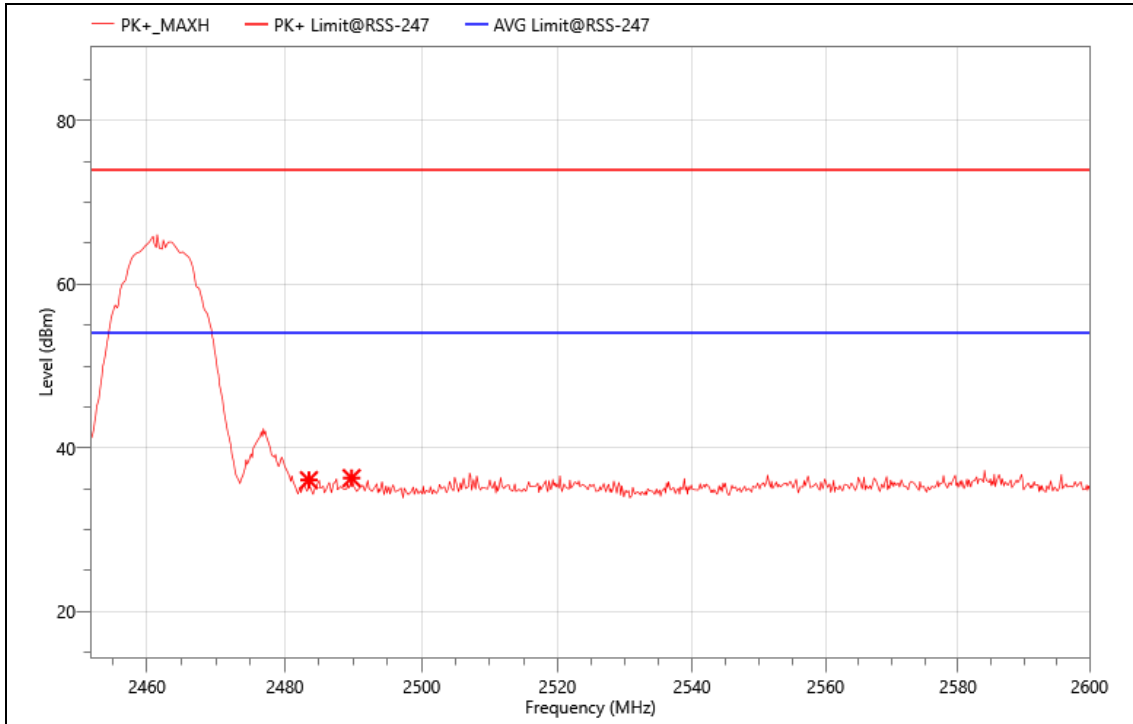
No.	Freq. (MHz)	Reading (dBμV)	Meas. (dBm)	Limit (dBm)	Margin (dBm)	Det.	Height (cm)	Pol.	Azimuth (deg)	Corr. (dB)
1	2334.720	61.15	39.92	74.00	34.08	PK+	150.0	V	-0.0	-
2	2390.000	59.15	38.11	74.00	35.89	PK+	150.0	V	-0.0	-



Critical_Freqs

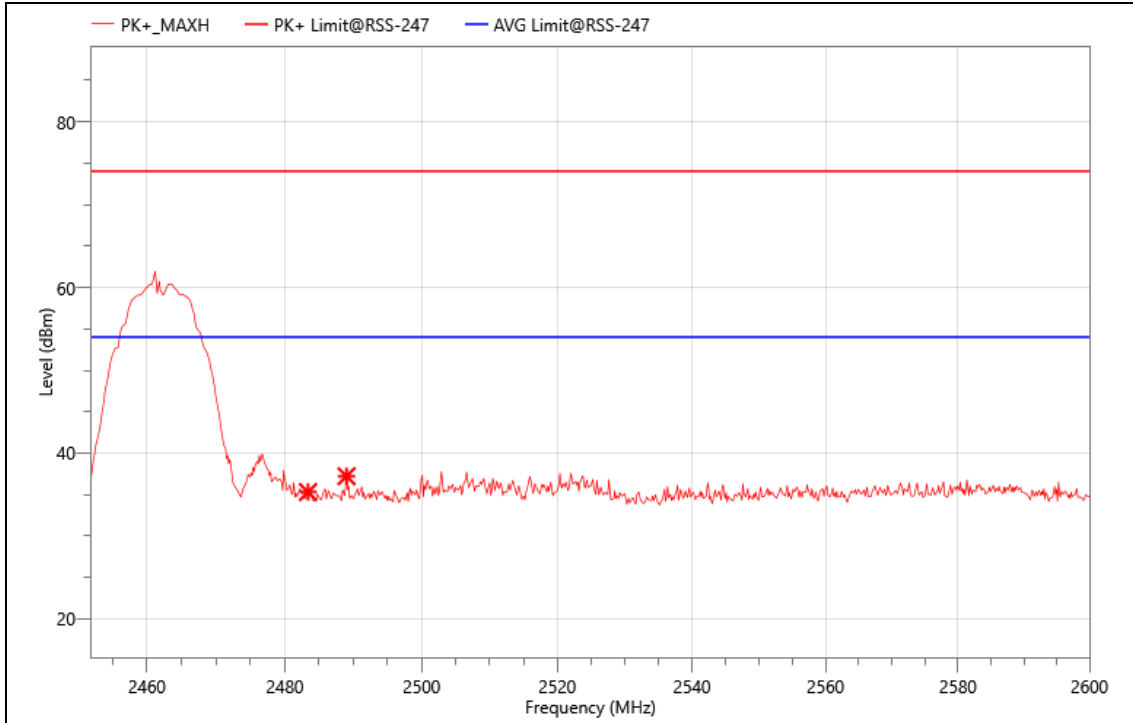
No.	Freq. (MHz)	Reading (dBμV)	Meas. (dBm)	Limit (dBm)	Margin (dBm)	Det.	Height (cm)	Pol.	Azimuth (deg)	Corr. (dB)
1	2324.160	62.25	40.85	74.00	33.15	PK+	150.0	H	359.9	-21.4
2	2390.000	58.50	37.46	74.00	36.54	PK+	150.0	H	359.9	-

Mode: TX2462



Critical_Freqs

No.	Freq. (MHz)	Reading (dBμV)	Meas. (dBm)	Limit (dBm)	Margin (dBm)	Det.	Height (cm)	Pol.	Azimuth (deg)	Corr. (dB)
1	2483.500	56.71	36.04	74.00	37.96	PK+	150.0	H	-0.0	-
2	2489.740	56.95	36.29	74.00	37.71	PK+	150.0	H	-0.0	-



Critical_Freqs

No.	Freq. (MHz)	Reading (dBμV)	Meas. (dBm)	Limit (dBm)	Margin (dBm)	Det.	Height (cm)	Pol.	Azimuth (deg)	Corr. (dB)
1	2483.500	55.98	35.31	74.00	38.69	PK+	150.0	V	360.0	-
2	2489.000	57.89	37.22	74.00	36.78	PK+	150.0	V	360.0	-

9. ANTENNA REQUIREMENT

REQUIREMENT

The EUT'S antenna is met the requirement of FCC part 15C section 15.203 and 15.247.

FCC part 15C section 15.247 requirements:

Systems operating in the 2402-2480MHz band that are used exclusively for fixed, point-to-point operations may employ transmitting antennas with directional gain greater than 6dBi provided the maximum peak output power of the intentional radiator is reduced by 1dB for every 3dB that the directional gain of the antenna exceeds 6dBi.

DESCRIPTION

Passs

10. AC POWER LINE CONDUCTED EMISSION

LIMITS

Please refer to CFR 47 FCC §15.207 (a) and ISED RSS-Gen Clause 8.8

FREQUENCY (MHz)	Quasi-peak	Average
0.15 -0.5	66 - 56 *	56 - 46 *
0.50 -5.0	56.00	46.00
5.0 -30.0	60.00	50.00

TEST PROCEDURE

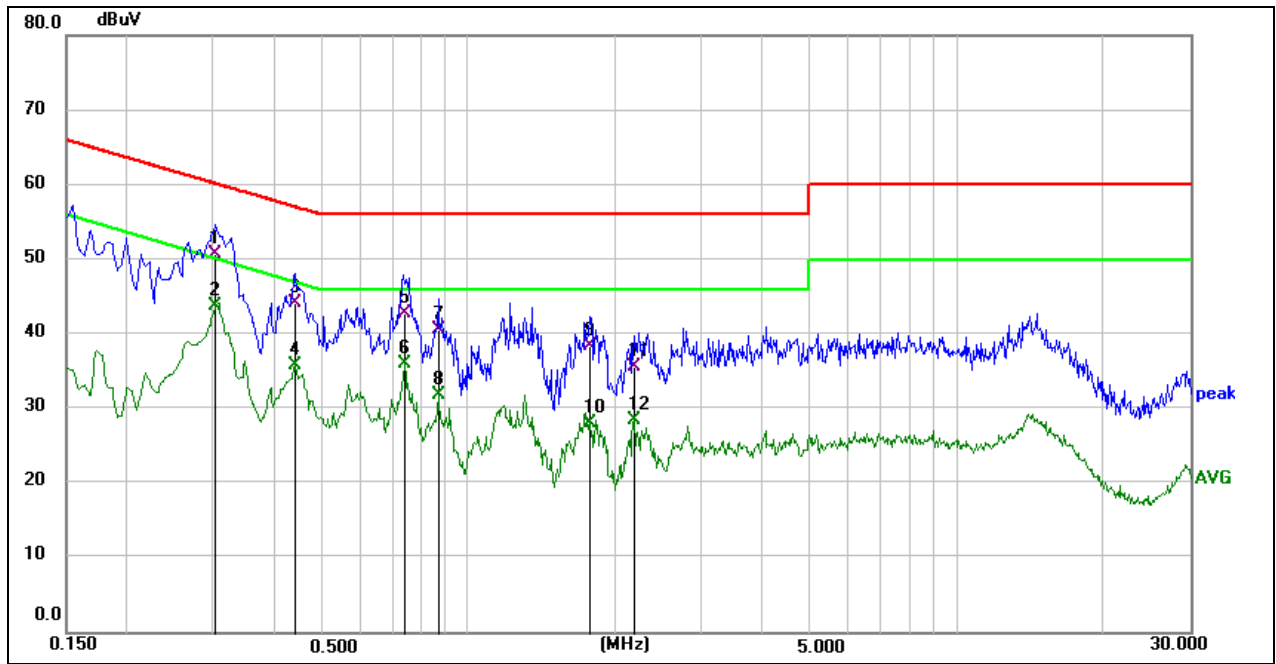
The EUT is put on a table of non-conducting material that is 80 cm high. The vertical conducting wall of shielding is located 40 cm to the rear of the EUT. The power line of the EUT is connected to the AC mains through a Artificial Mains Network (A.M.N.). A EMI Measurement Receiver (R&S Test Receiver ESR3) is used to test the emissions from both sides of AC line. According to the requirements in Section 6.2 of ANSI C63.10-2013. Conducted emissions from the EUT measured in the frequency range between 0.15 MHz and 30 MHz using CISPR Quasi-Peak and average detector mode. The bandwidth of EMI test receiver is set at 9 kHz.

The arrangement of the equipment is installed to meet the standards and operating in a manner, which tends to maximize its emission characteristics in a normal application.

TEST ENVIRONMENT

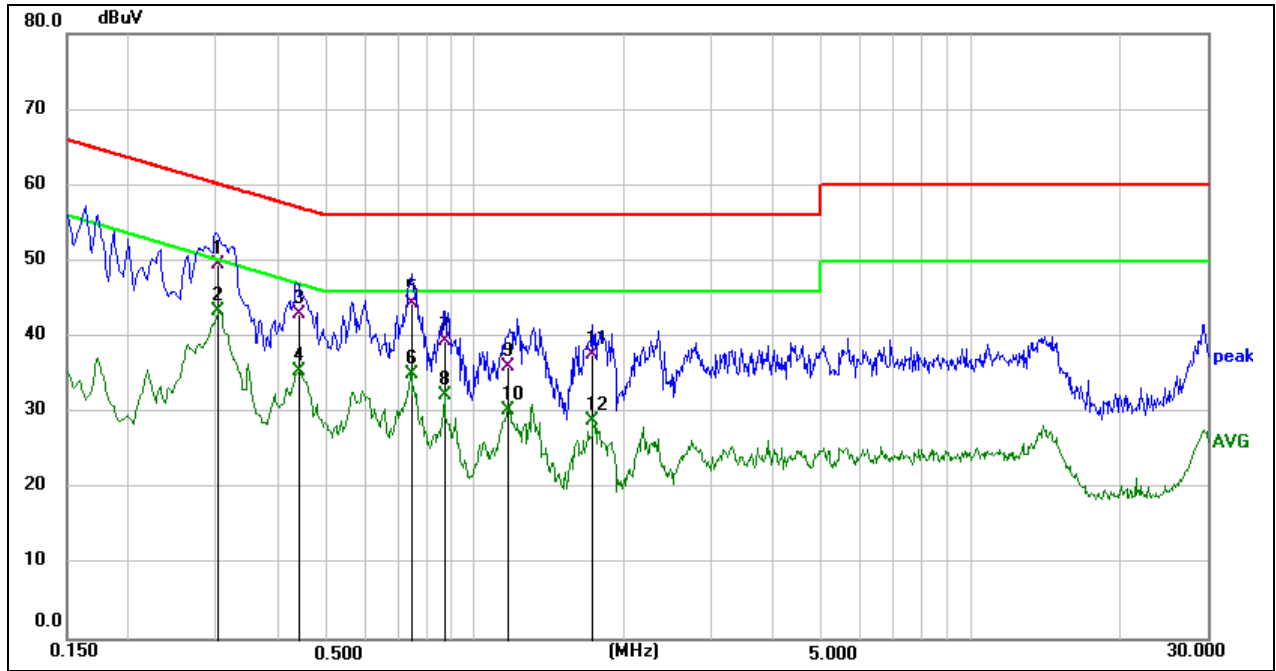
Temperature	26°C	Relative Humidity	54%
Atmosphere Pressure	101kPa		

TEST RESULTS



Site:	Shielding Room B-2	Phase:	L1	Temperature(C):	26(C)
Limit:	FCC Part 15 C Conduction(QP)	Test Time:		Humidity(%):	54%RH
EUT:	Nanoleaf Smarter IQ antaxy Art Display Case	Power Rating:		2023/7/24 17:37:35	
M/N.:	SQFX01K	Test Engineer:		AKi	
Mode:	802.11b TX2412				
Note:					

No.	Frequency (MHz)	Reading (dBuV)	Correct (dB)	Result (dBuV)	Limit (dBuV)	Margin (dB)	Remark
1	0.3030	40.78	9.92	50.70	60.16	-9.46	QP
2	0.3030	33.94	9.92	43.86	50.16	-6.30	AVG
3	0.4380	34.29	9.92	44.21	57.10	-12.89	QP
4	0.4380	25.99	9.92	35.91	47.10	-11.19	AVG
5	0.7395	32.89	9.82	42.71	56.00	-13.29	QP
6	0.7395	26.24	9.82	36.06	46.00	-9.94	AVG
7	0.8700	30.68	9.92	40.60	56.00	-15.40	QP
8	0.8700	21.94	9.92	31.86	46.00	-14.14	AVG
9	1.7790	28.50	9.82	38.32	56.00	-17.68	QP
10	1.7790	18.27	9.82	28.09	46.00	-17.91	AVG
11	2.1795	25.89	9.83	35.72	56.00	-20.28	QP
12	2.1795	18.73	9.83	28.56	46.00	-17.44	AVG



Site:	Shielding Room B-2	Phase:	N	Temperature(C):	26(C)
Limit:	FCC Part 15 C Conduction(QP)	Test Time:		Humidity(%):	54%RH
EUT:	Nanoleaf Smater IQ antaxy Art Display Case	Power Rating:		2023/7/24 17:39:47	
M/N.:	SQFX01K	Test Engineer:			
Mode:	802.11b TX2412				
Note:					

No.	Frequency (MHz)	Reading (dBuV)	Correct (dB)	Result (dBuV)	Limit (dBuV)	Margin (dB)	Remark
1	0.3030	39.76	9.69	49.45	60.16	-10.71	QP
2	0.3030	33.73	9.69	43.42	50.16	-6.74	AVG
3	0.4380	33.24	9.80	43.04	57.10	-14.06	QP
4	0.4380	25.56	9.80	35.36	47.10	-11.74	AVG
5	0.7440	34.58	9.85	44.43	56.00	-11.57	QP
6	0.7440	25.13	9.85	34.98	46.00	-11.02	AVG
7	0.8700	29.66	9.79	39.45	56.00	-16.55	QP
8	0.8700	22.41	9.79	32.20	46.00	-13.80	AVG
9	1.1715	26.30	9.76	36.06	56.00	-19.94	QP
10	1.1715	20.48	9.76	30.24	46.00	-15.76	AVG
11	1.7340	27.61	9.91	37.52	56.00	-18.48	QP
12	1.7340	19.00	9.91	28.91	46.00	-17.09	AVG

- Note: 1. Result = Reading + Correct Factor.
 2. If QP Result complies with AV limit, AV Result is deemed to comply with AV limit.
 3. Test setup: RBW: 200 Hz (9 kHz ~ 150 kHz), 9 kHz (150 kHz ~ 30 MHz).
 4. Step size: 80 Hz (0.009 MHz ~ 0.15 MHz), 4 kHz (0.15 MHz ~ 30 MHz), Scan time: auto.

Note: All the modes have been tested, only the worst data was recorded in the report.

11. TEST DATA

Please refer to Appendix A

APPENDIX: PHOTOGRAPHS OF TEST CONFIGURATION

AC Power Line Conducted Emission



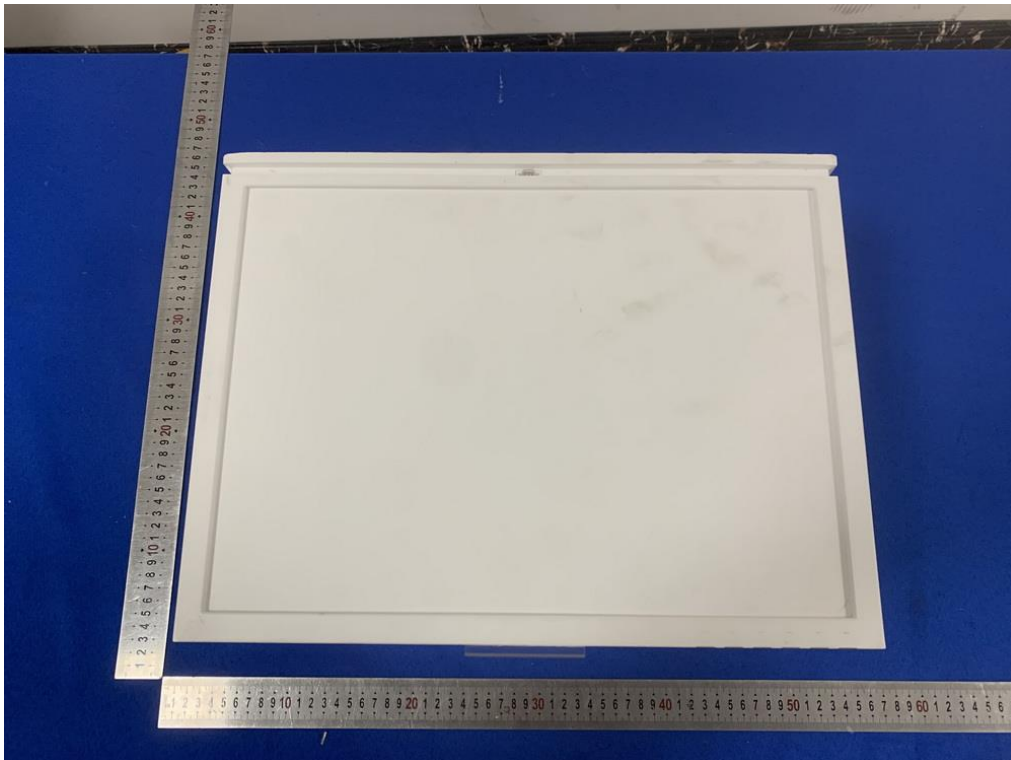
Radiated Band edge and Spurious Emission

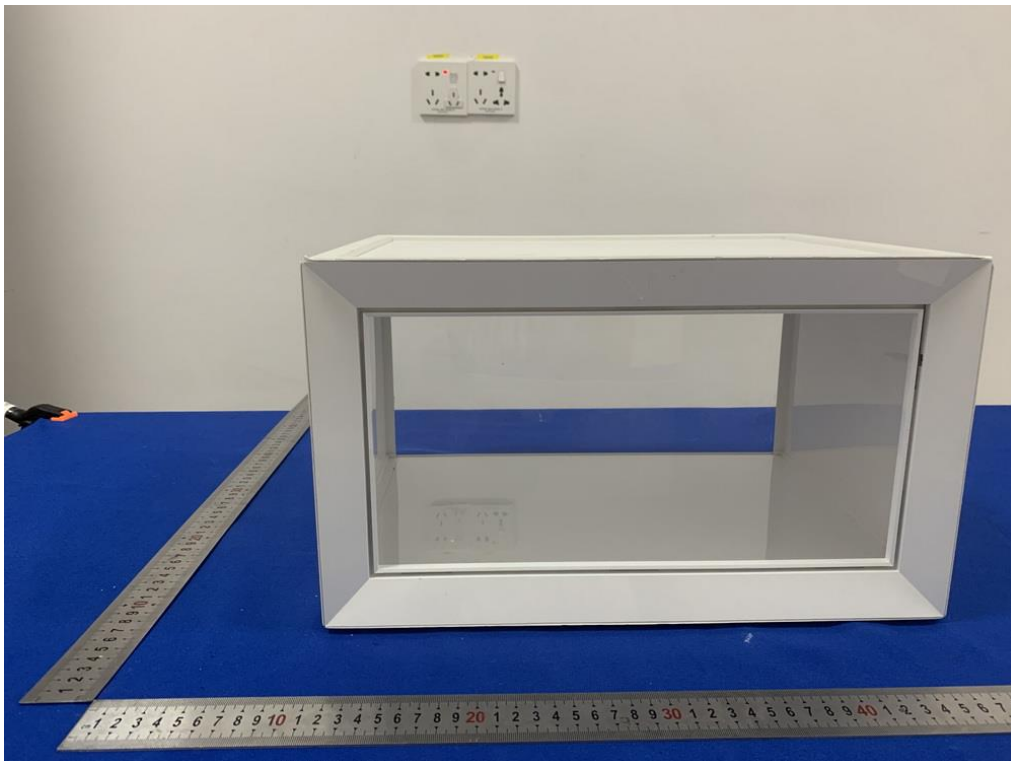
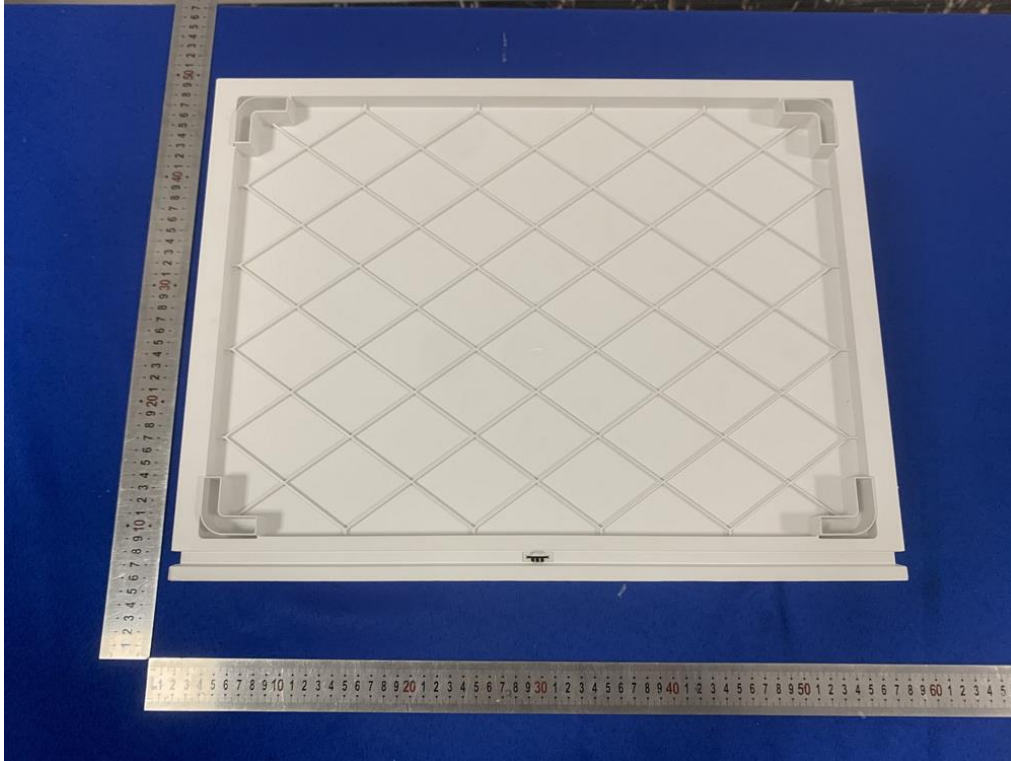


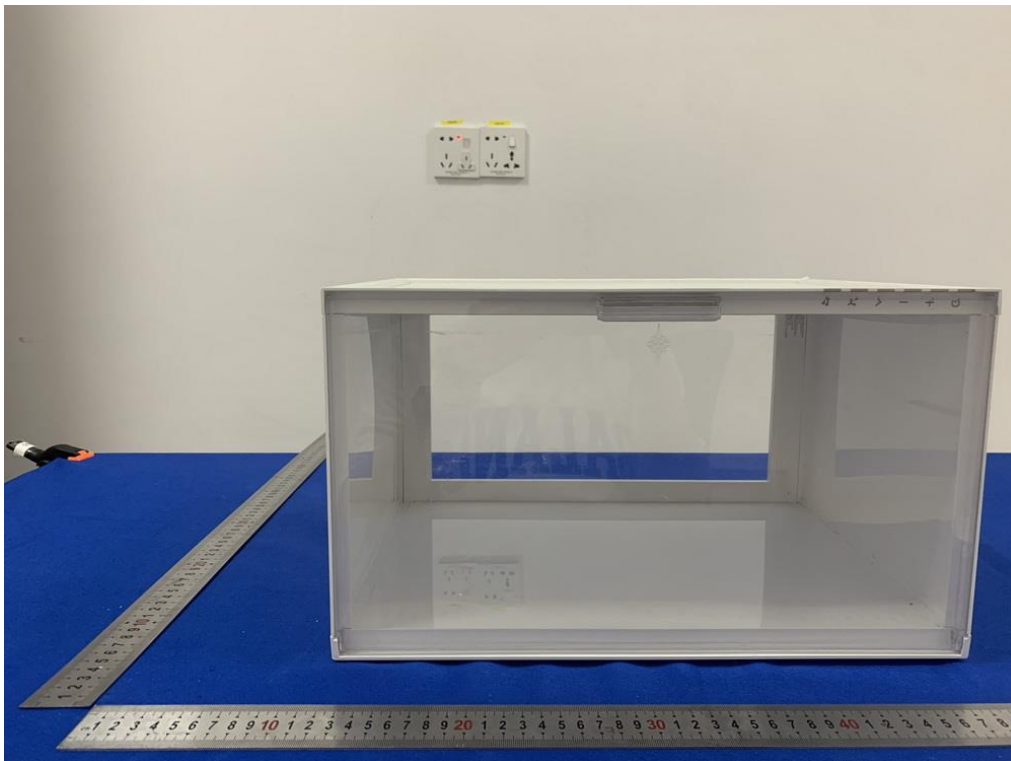
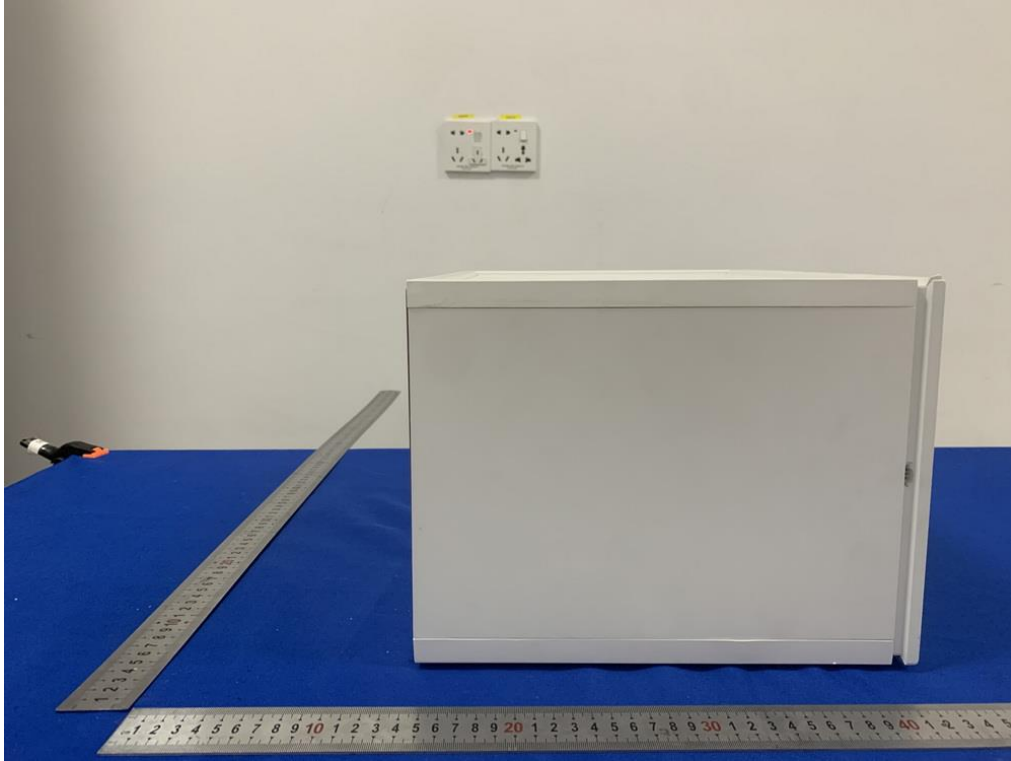


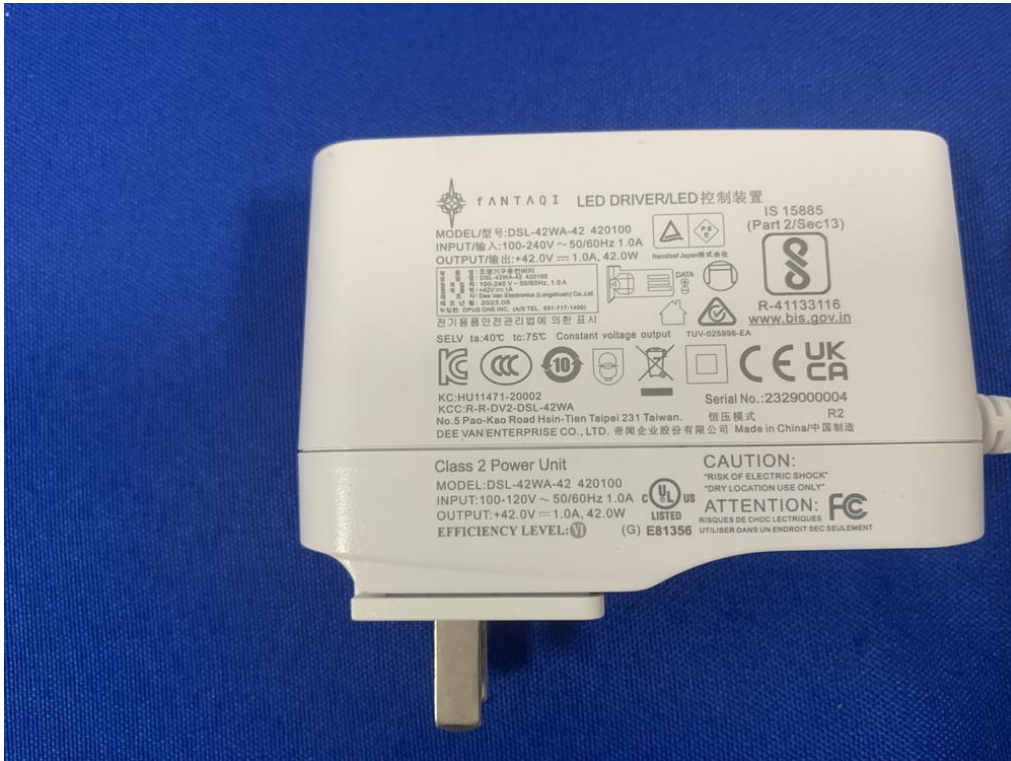
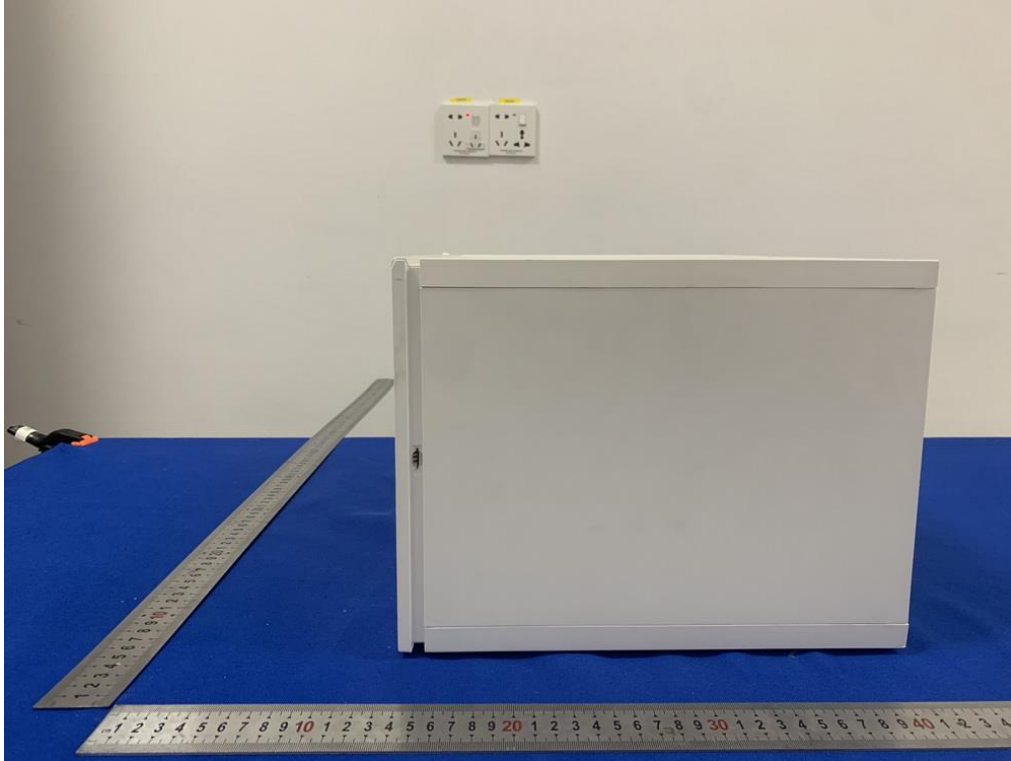
APPENDIX: PHOTOGRAPHS OF THE EUT

External

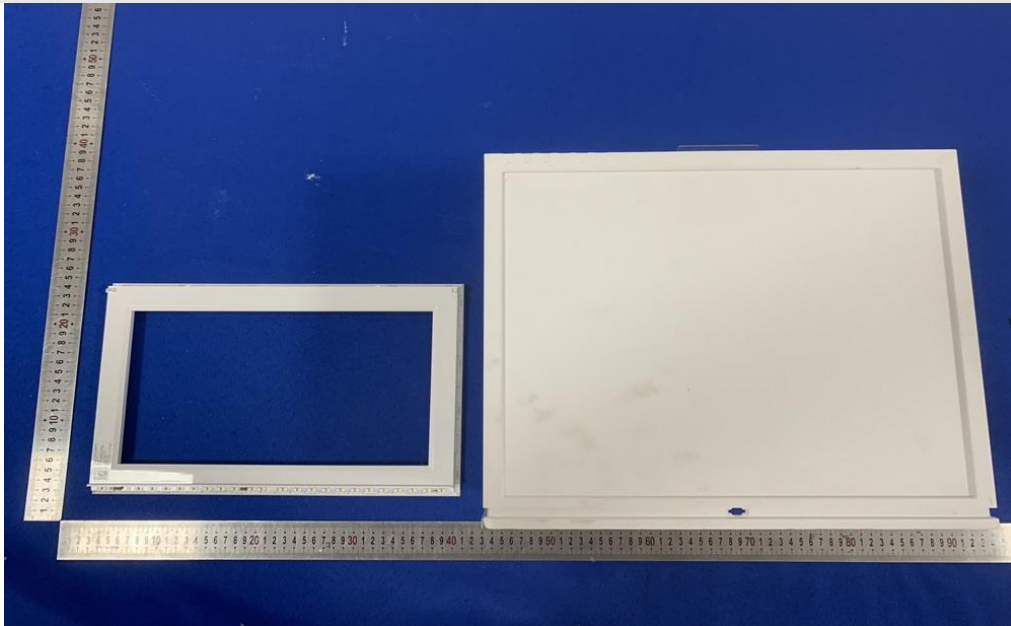


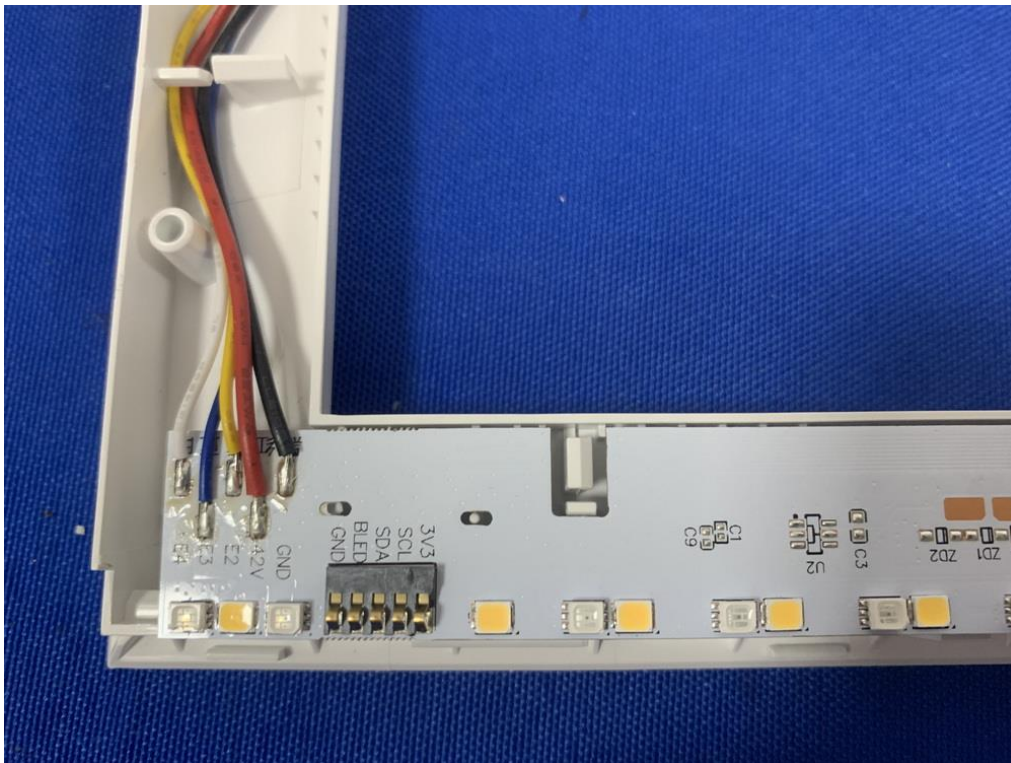
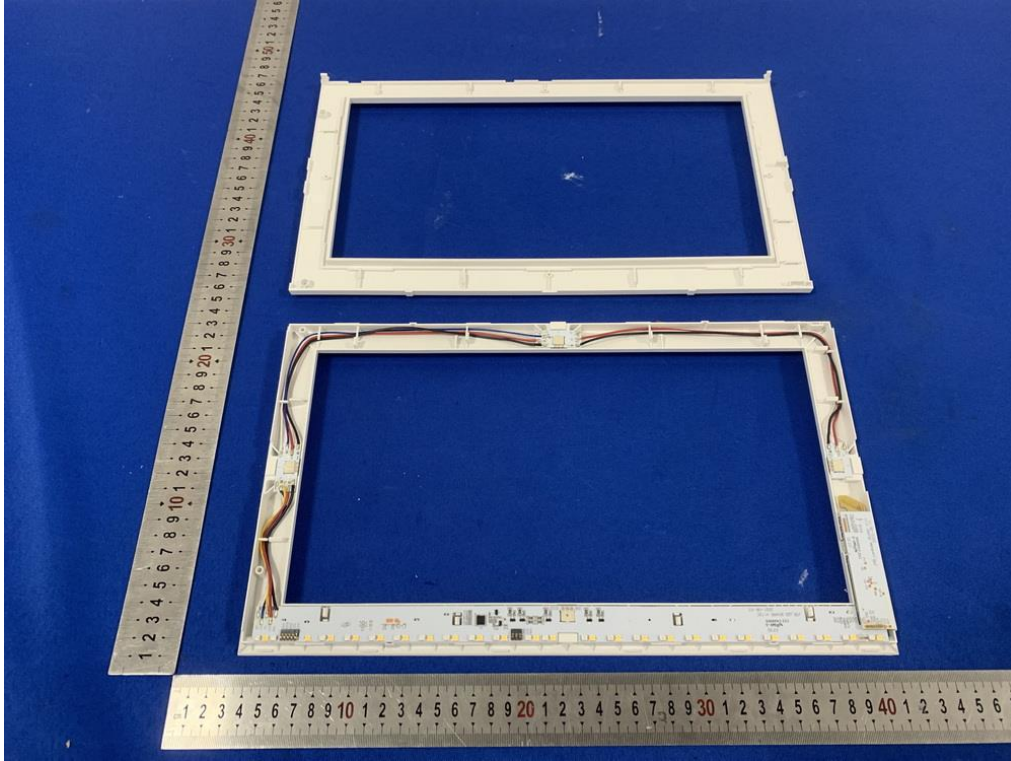


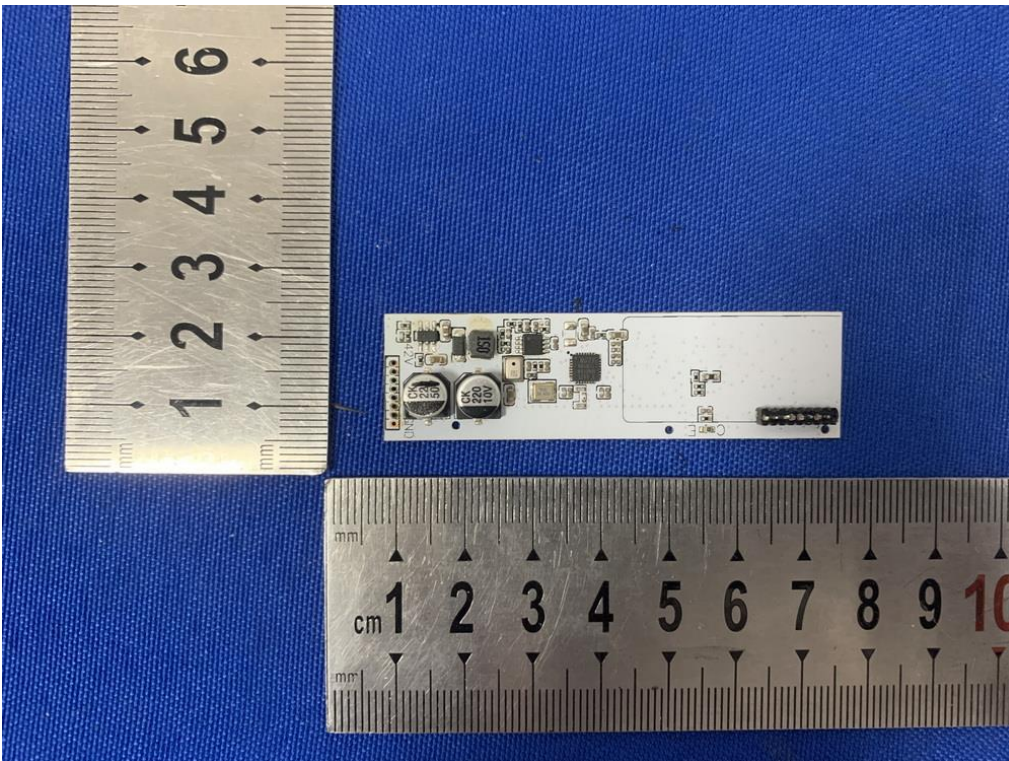


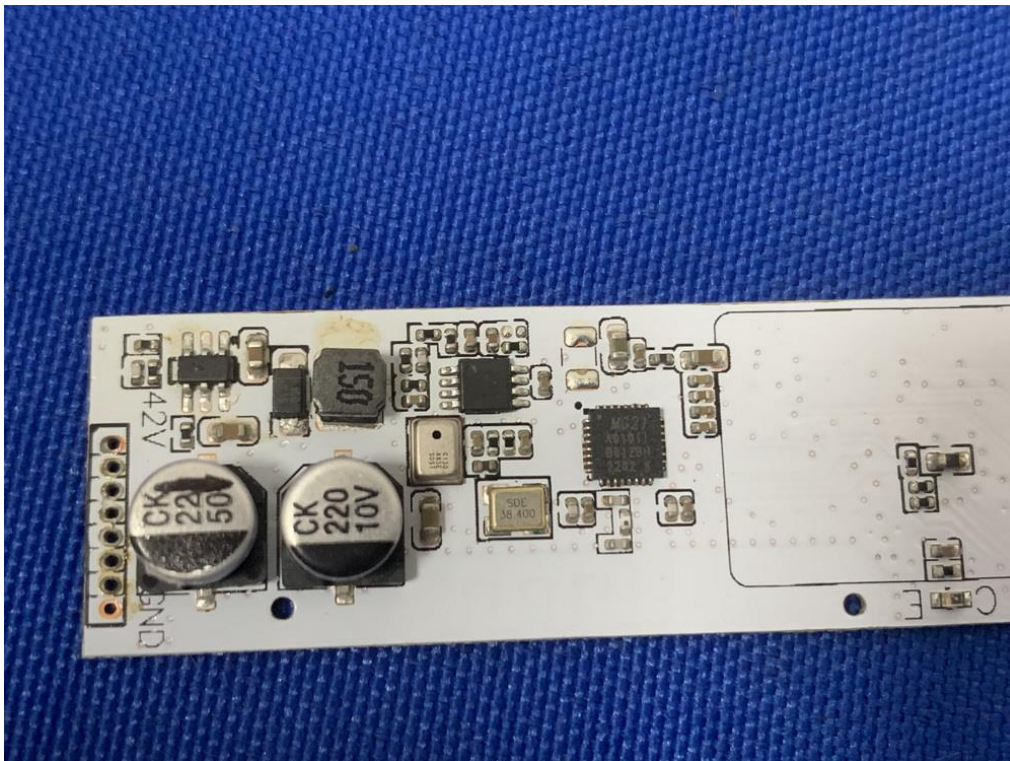
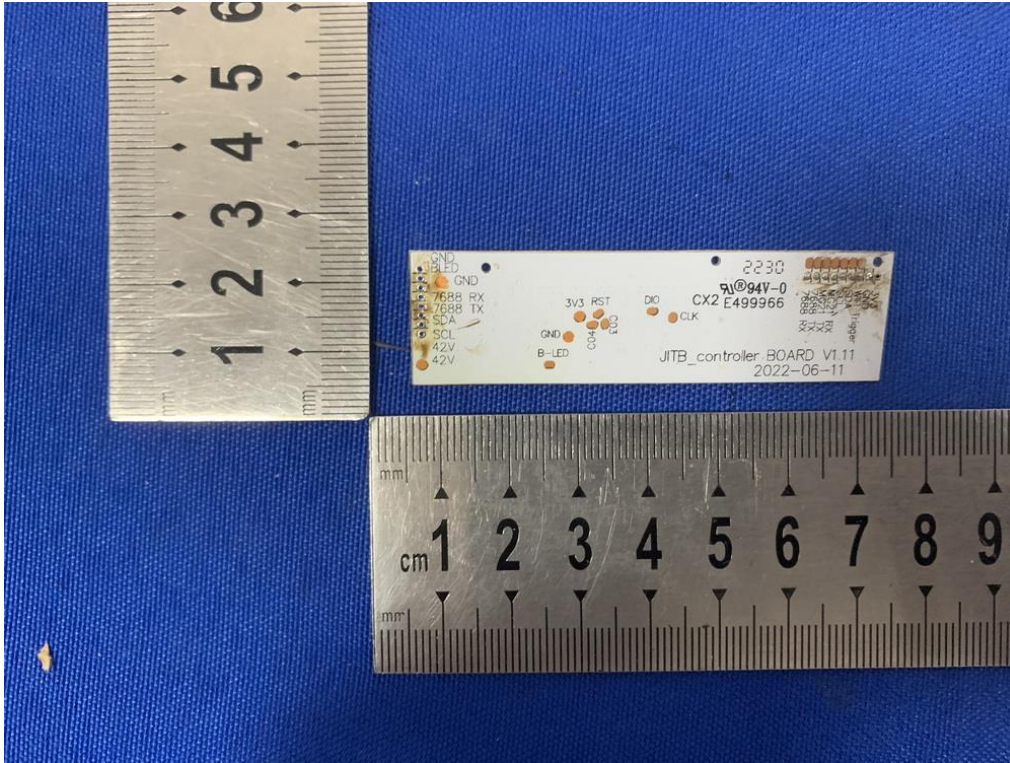


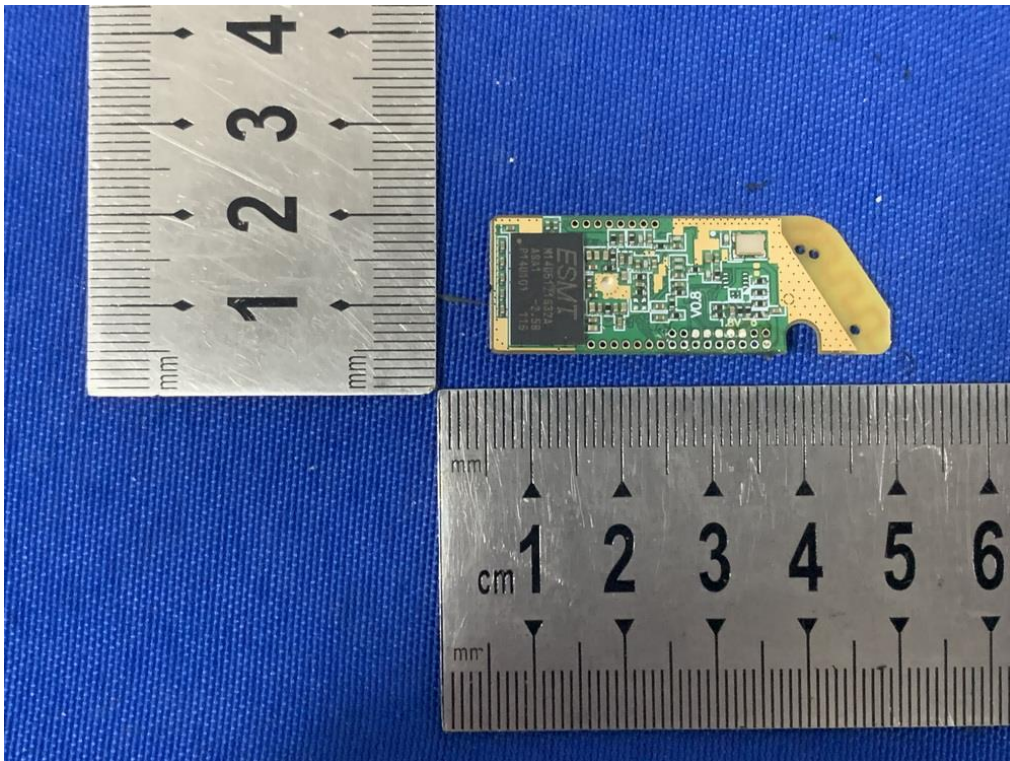
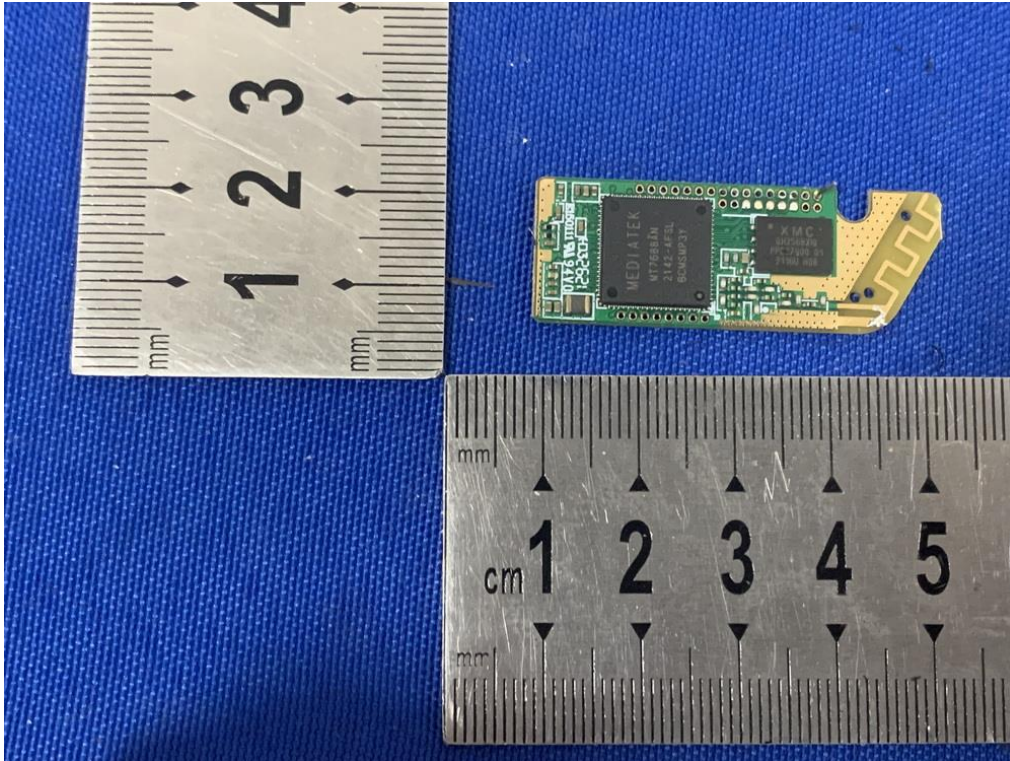
Internal











END OF REPORT