

**Product Characteristics**

<b>Model:</b>	2.4G ANT		
<b>Transmitter Frequency:</b>	2400MHz~ 2480MHz		
<b>Receiver Frequency:</b>	2400MHz~ 2480MHz		
<b>RF-Output Power (E.I.R.P):</b>	<10dBm		
<b>Type of Modulation:</b>	GFSK, O-QPSK		
<b>Antenna information:</b>	<b>Antenna Name</b>	<b>Model(s)/Type(s)</b>	
		Model/Part Number:	N/A
		Manufacturer:	Shenzhen RF sister Communication co., Ltd.
		Frequency Range:	2400MHz~ 2480 MHz
		Connector Type/ Maximum Gain	Integrated, 2.15 dBi
		Antenna Type/ Pattern:	PCB Antenna
		Measurement:	13.38mm(L)*3.0mm(W)*0.8mm(T)

Fig.1: The dimension of the PCB Antenna

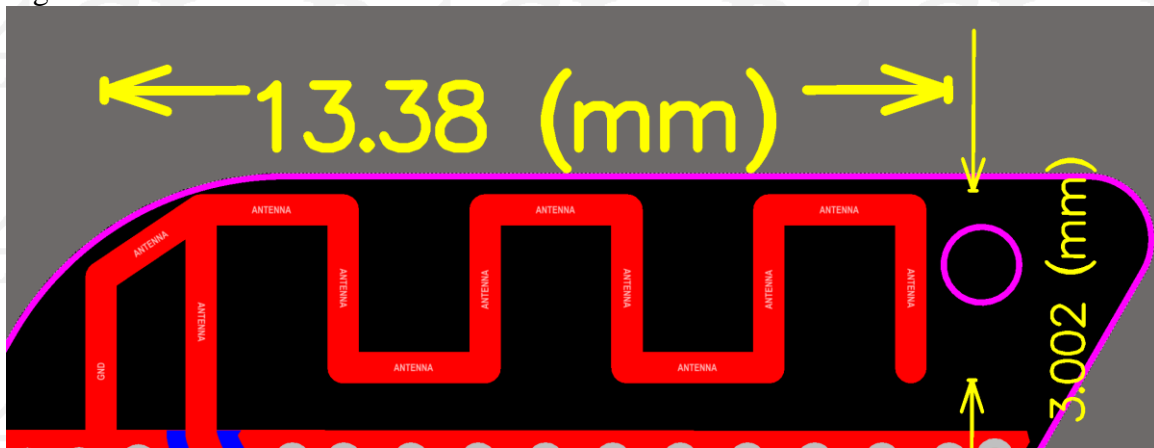
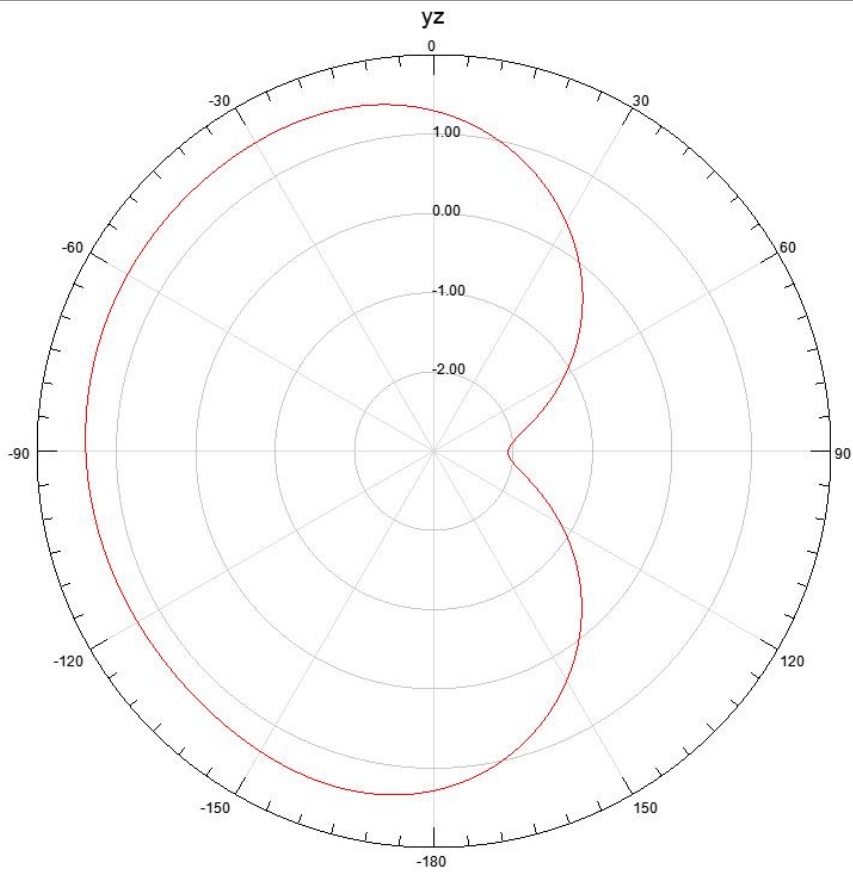
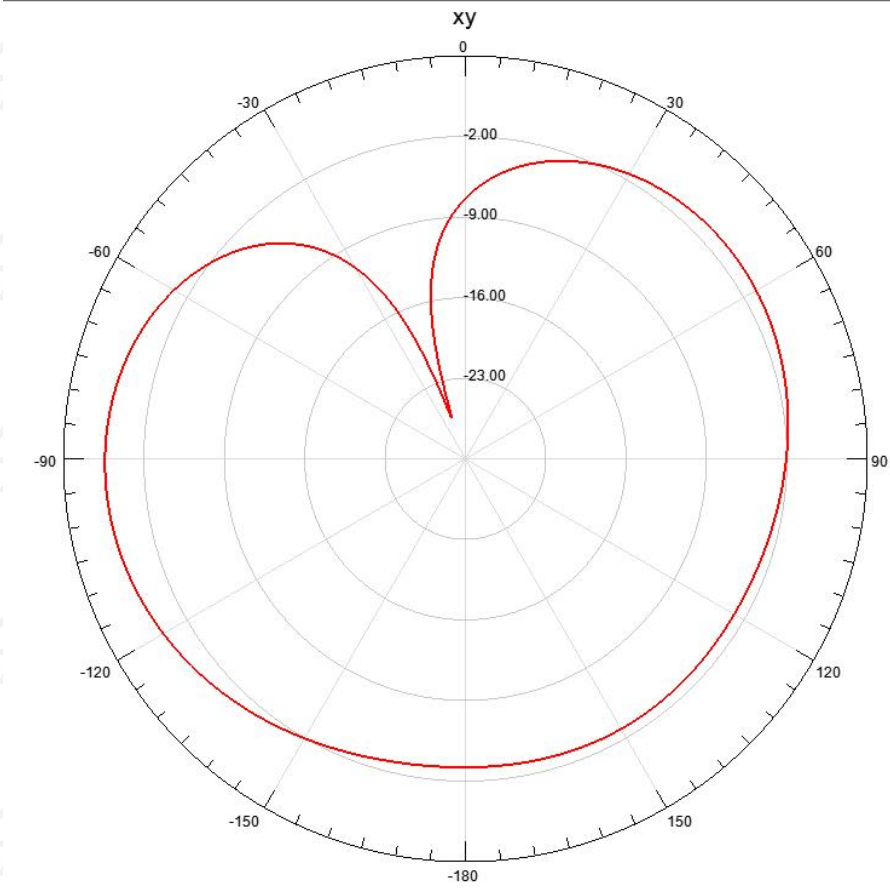
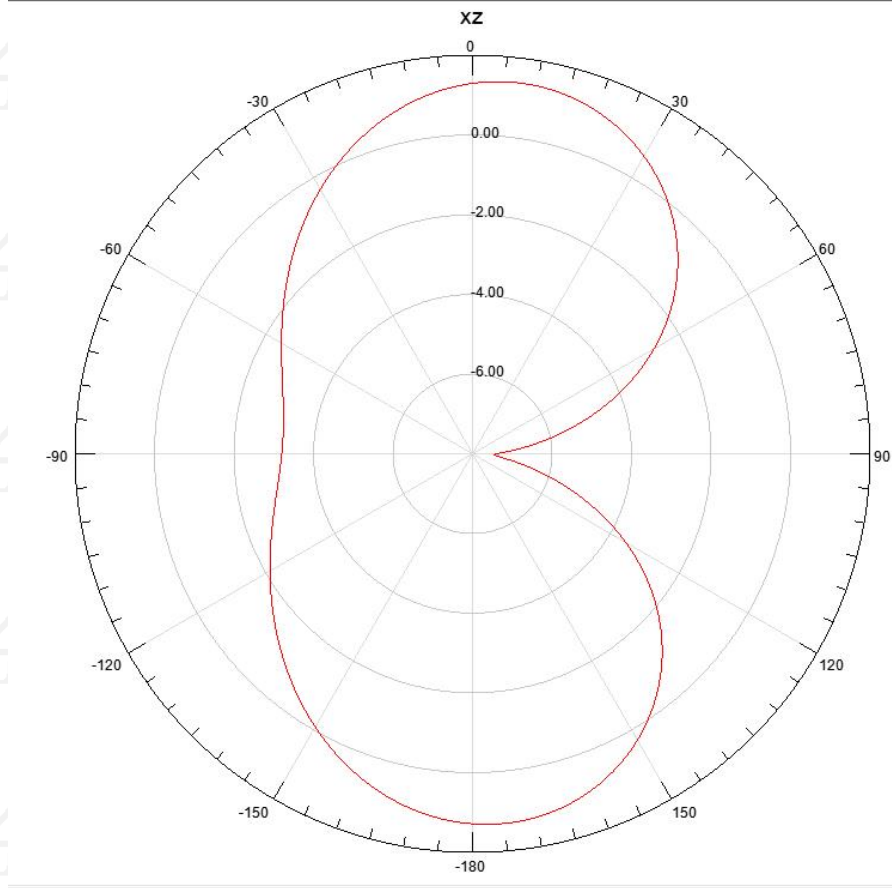


Fig.2: The pattern of the PCB Antenna





BACL BACL BACL BACL

BACL BACL BACL BACL