

# BT Antenna Test Report

<b>Customer</b>	<b>Kingsheng</b>
<b>Project</b>	
<b>Product Description</b>	<b>Chip 3216</b>

<b>Report Date</b>	<b>2023.9.14</b>	<b>Prepared by</b>	<b>Hao_li</b>
<b>Report Version</b>	<b>V0</b>	<b>Checked by</b>	

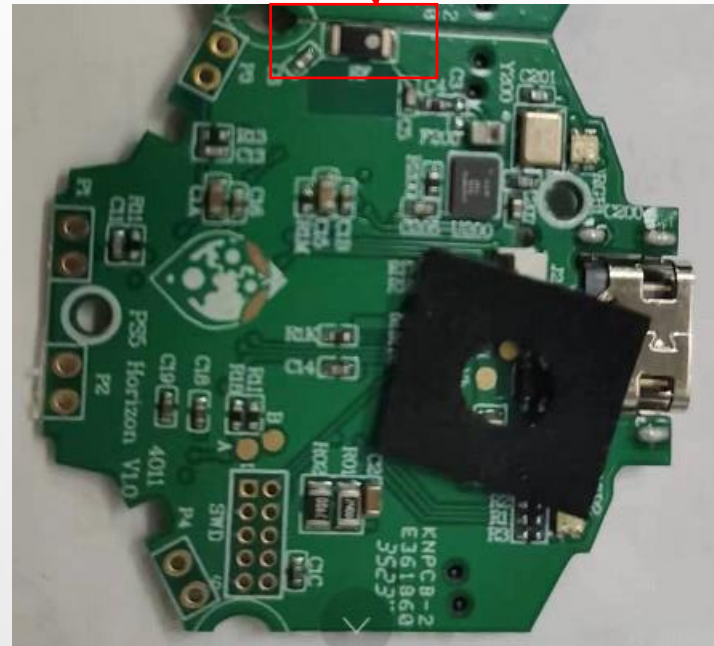
# Introduction

**I. Test Condition**

**II. Test Result**

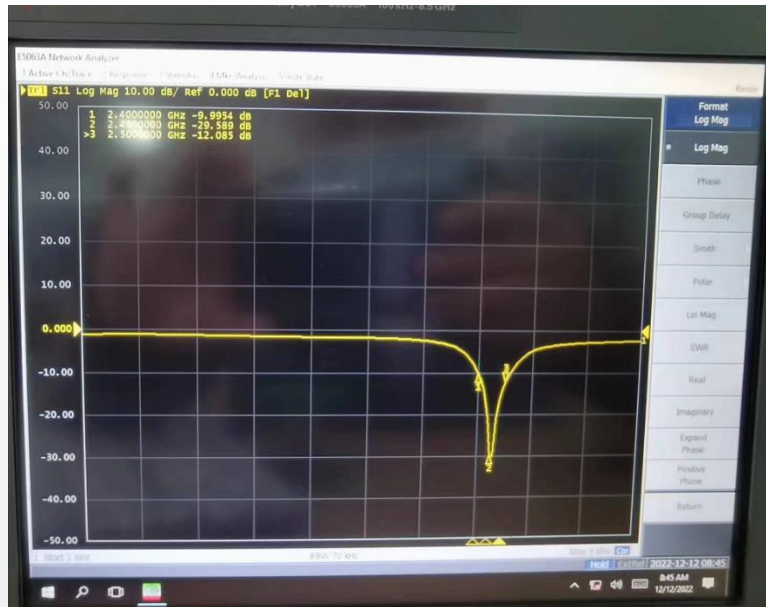
# I. Test Condition

Antenna

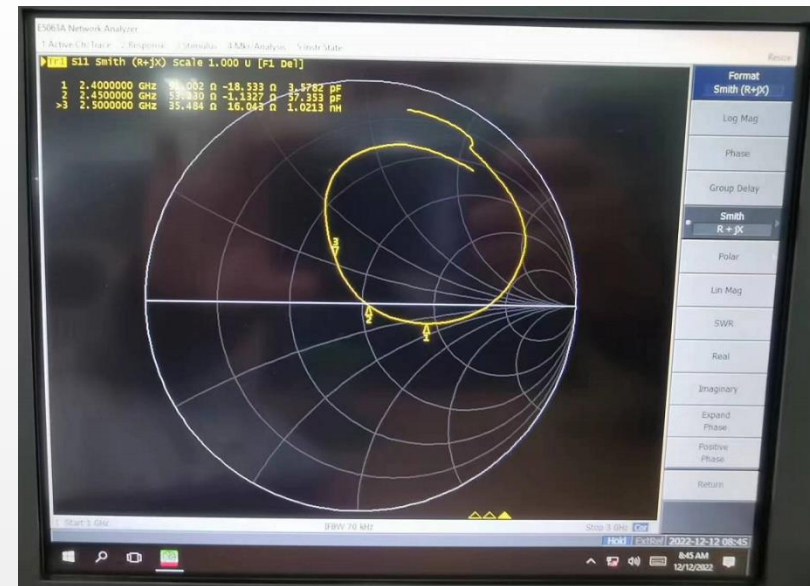


# II. Test Result

## 2.2. Patch Antenna S-Parameter



Return loss

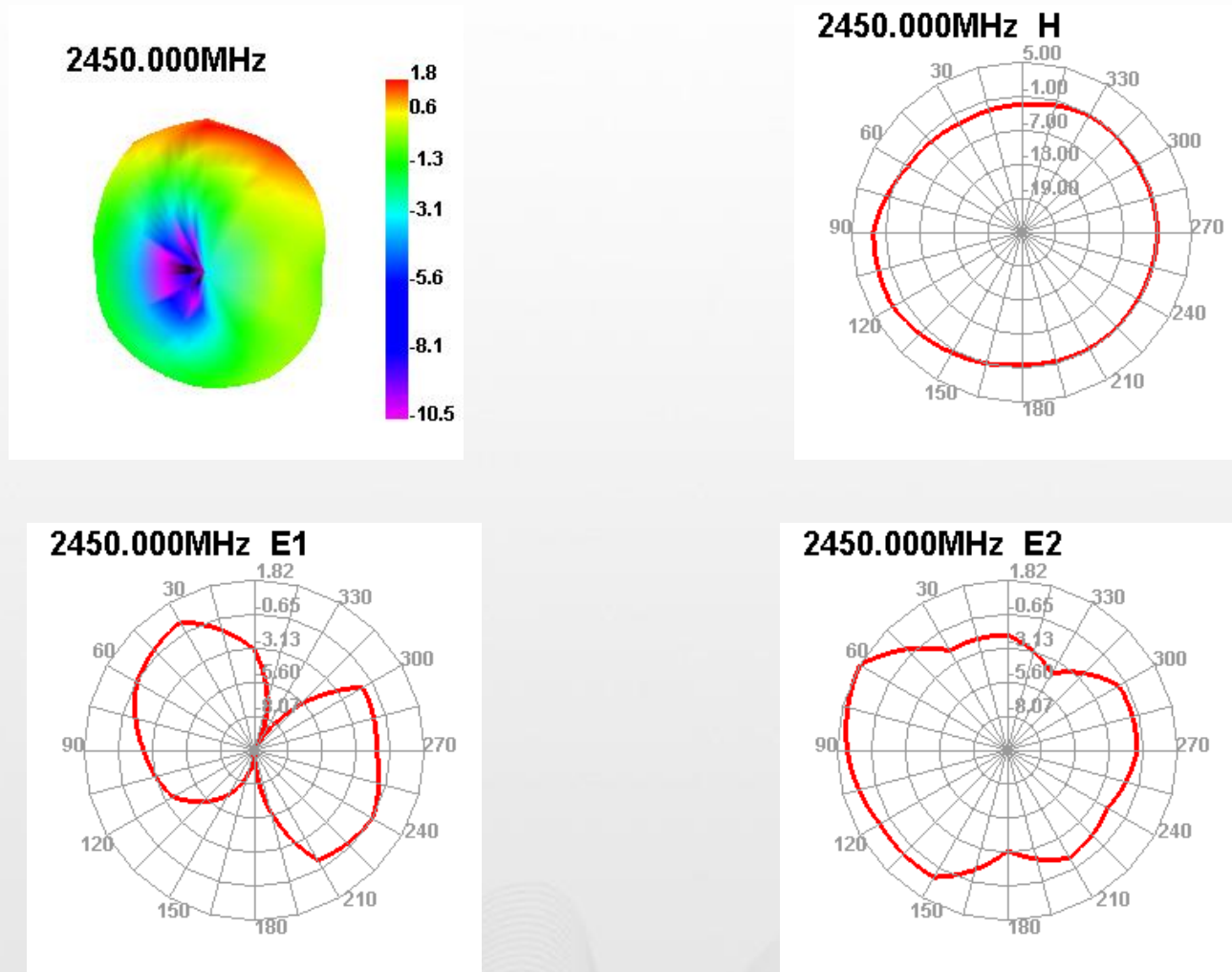


Smith-Chart

Frequency(MHz)	Return loss (dB)	Impedance ( $\Omega$ )
2400	-9.9	91.0
2450	-29.5	52.3
2500	-12.08	35.4

# II. Test Result

## 2.3. Patch Antenna S-Parameter



# II. Test Result

## 2.4 Efficiency And Peak Gain

Frequency (MHz)	Efficiency (%)	Peak Gain (dBi)
2400	<b>49.13</b>	<b>1.32</b>
2420	<b>50.21</b>	<b>1.54</b>
2440	<b>51.07</b>	<b>1.72</b>
2450	<b>52.36</b>	<b>1.81</b>
2460	<b>51.06</b>	<b>1.77</b>
2480	<b>50.95</b>	<b>1.53</b>
2500	<b>48.24</b>	<b>1.32</b>



**The End**