

CONGRATULATIONS ON YOUR PURCHASE OF THE SPASTUDIO® HOLLYWOOD VANITY LIGHTED MIRROR.

Please read all instructions and warnings prior to use. Keep this manual as it contains important information for future reference.

SHARPER IMAGE NAME AND LOGOS (INCLUDING THE 77 LOGO) ARE TRADEMARKS OR REGISTERED TRADEMARKS. DISTRIBUTED BY AND © 2022 MERCHSOURCE, LLC, IRVINE, CA 92618. ALL RIGHTS RESERVED.

FOR CUSTOMER SUPPORT, PLEASE CALL
1-800-374-2744.

MODEL NO.: 1016930

Printed in China.

FCC STATEMENT

This device complies with Part 15 of the FCC Rules. Operation is subject to the following two conditions:
1. This device may not cause harmful interference, and
2. This device must accept any interference received, including interference that may cause undesired operation.

Note: This equipment has been tested and found to comply with the limits for a Class B digital device, pursuant to part 15 of the FCC Rules. These limits are designed to provide reasonable protection against harmful interference in a residential installation. This equipment generates, uses and can radiate radio frequency energy and, if not installed and used in accordance with the instructions, may cause harmful interference to radio communications. However, there is no guarantee that interference will not occur in a particular installation. If this equipment does cause harmful interference to radio or television reception, which can be determined by turning the equipment off and on, the user is encouraged to try to correct the interference by one or more of the following measures:

- Reorient or relocate the receiving antenna.
- Increase the separation between the equipment and receiver.
- Connect the equipment into an outlet on a circuit different from that to which the receiver is connected.
- Consult the dealer or an experienced radio/TV technician for help.

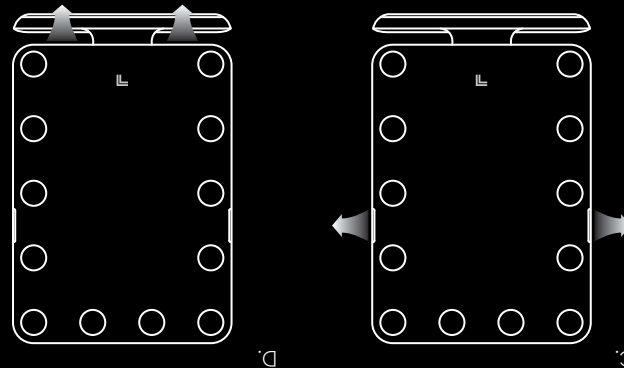
Warning: Changes or modifications to this unit not expressly approved by the party responsible for compliance could void the user's authority to operate the equipment.

FANS

- The Hollywood Mirror has built-in fans to help cool and dry make up and nails.
- To turn on the upper fans, touch the fan button once. A cool stream of air will be directed toward your face from each side of the mirror (Figure C).
- To activate "Nail Mode" touch the fan button again to turn off the top fans and turn on the bottom fans. The bottom fans will direct the air towards the mirror's tray (Figure D).
- When Nail mode is engaged, the lighting controls will be locked and a lock icon will illuminate to indicate that nail mode is on. This is to allow you to rest your hands over the lower tray, with your fingertips under the mirror, where the Hollywood Mirror's fans will assist in drying nail polish.
- Be careful not to touch wet nail polish against the tray or the underside of the Hollywood Mirror.
- To adjust the lighting, touch the fan button again to disengage nail mode and allow the other buttons to resume their normal functions.

MIRROR

- The tilt angle of the mirror can also be adjusted by placing one hand on the mirror's base and gently moving the bottom of the mirror forward or backward to the desired position.
- The Max tilt angle of the mirror is 20 degree.



SAFETY WARNINGS

PLEASE READ BEFORE USE

- Adult assembly required.
- Use this item only for its intended use.
- Do not expose to extreme temperatures.
- Thoroughly inspect products before every use. If the product appears worn, frayed/splintered, cracked, or broken in any manner, discontinue use and discard immediately.
- Careful when handling this product, it is made of glass and could break, chip or shatter if dropped.
- Do not submerge in water.

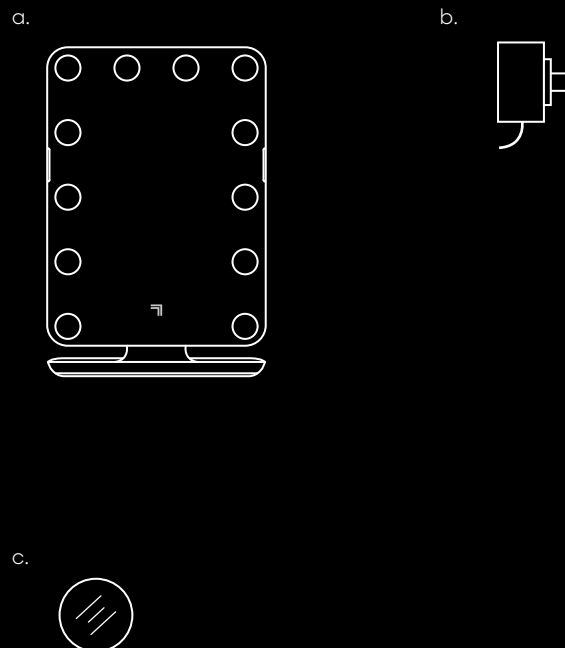
⚠ DANGER

To reduce the risk of electric shock, always unplug this appliance before cleaning.

This product is meant for use only in conjunction with a suitable device. Please consult your device packaging to determine whether this product is compatible with your particular device. Manufacturer is not responsible for any damages to any device or personal property incurred through the use of this product. Manufacturer shall in no way be liable to you or any third party for any damages you or any third party may suffer as a result of use, intended or unintended, or misuse of this product in conjunction with any device or accessory other than the compatible device for which this product is designed or intended. Manufacturer will not be responsible for any damages you or any third party may suffer as a result of misuse of this product as outlined above. Samsung and Galaxy S are both registered trademarks of Samsung Electronics Co., Ltd. Apple and iPhone are trademarks of Apple Inc. Qi is a trademark of the Wireless Power Consortium.

WHAT YOU GET

- a. SpaStudio Hollywood Mirror
- b. AC adapter
- c. 10x magnetic mini mirror

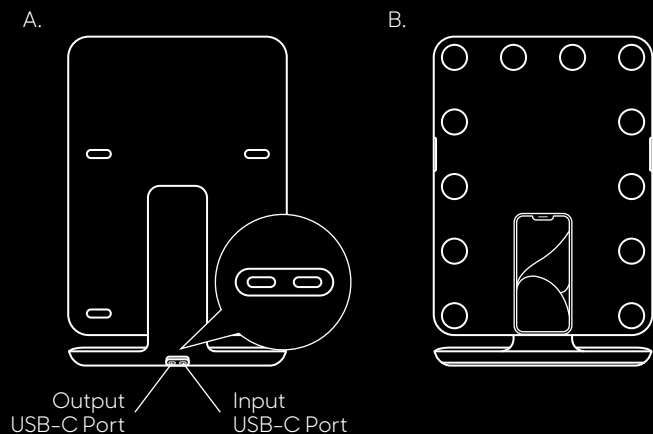


GETTING STARTED

POWER

1. Locate the USB-C inputs on the Hollywood Mirror located on the rear base of the mirror.
2. Insert the USB-C side of the adapter into the right port (Figure A).
Note: This adapter is designed specifically for the Hollywood Mirror. Do not attempt to power with any other adapter.
Do not attempt to power or charge any other device with this adapter. Failure to heed these instructions could result in damage to the Hollywood Mirror or your other personal devices.
3. Plug the AC adapter into an 110V AC household outlet.
4. Now your Hollywood Mirror is ready for use.

- The Hollywood Mirror can also provide pass-through charging to another device.
- Devices to be powered by the mirror must be plugged into the left USB-C output port next to the power port. The Hollywood Mirror will provide 5V/1A power output.
- The Hollywood Mirror also provides Qi charging for your compatible phone. Place your phone on the silver ledge at the bottom of the mirror so that it covers the Qi logo. Qi charging will begin automatically and a white LED underneath the mirror will indicate that Qi charging is engaged. You can charge your phone vertically or horizontally (Figure B).

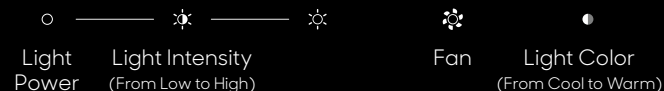


QI CHARGING TIPS

COMPATIBLE WITH

- Apple iPhone 8 and newer and select Android smartphones.
- Qi wireless technology enabled devices.
- Be sure to remove all phone accessories to use Qi charging. A non-metal phone case up to 3mm thick can be used.

HOW TO USE



LIGHT

- To turn the mirror's lights on, gently touch the leftmost dot of the lighting control panel.
- The lights will turn on in low setting. To increase light intensity, simply touch or slide your finger along the lighting control bar to adjust between the Hollywood Mirror's 5 lighting intensity levels.
- To adjust the lighting color, touch the color button. Repeated presses will toggle through the 3 builtin lighting color 'temperatures' for optimal makeup application at any setting.
- Mix and match color settings to create the perfect light setting for you.
- To turn the mirror's light off, gently touch and hold the leftmost dot of the lighting control panel.

SPOT MIRROR

- To use the included 10x magnification spot mirror, attach it anywhere on the face of the Hollywood Mirror. You can also store it on the back of the mirror.
- To store on the back, place it over the silk screened icon. The internal magnet will hold it in place, and the sticky silicon pad will assist as well.
- If the sticky silicone pad becomes dirty, wipe it clean with water and allow to air dry.