

97.0 mm

97.0 mm

ring

For additional help, visit:
ring.com/help

Or give us a call:

[US 1 800 656 1918](tel:18006561918)

[Canada 1 855 300 7289](tel:18553007289)

[AU 1 300 205 983](tel:1300205983)

[NZ +64 9 887 9871](tel:6498879871)

[Worldwide +1 310 929 7085](tel:13109297085)

For a list of all our customer support numbers, visit: ring.com/callus

To review your warranty coverage, please visit
www.ring.com/warranty

© 2020 Ring LLC or its affiliates.
 Ring and all related logos are trademarks of
 Ring LLC or its affiliates.

6ACS9202M.02G

ring Video Doorbell
 User Manual



135.0 mm

6ACS9202M.02G-CS-9202_WT1_US/ANZ_Manual V2.0

INNOVATIVE, SUSTAINABLE
 PACKAGING SOLUTIONS

R1 加料号
 四色转专色
 R2 客更新文件
 R3 客更新文件

OFFSET



DIE LINE
 NO PRINT

JOB NUMBER:	CLIENT:
ART FILE NAME: 6ACS9202M.02G-CS-9202_WT1_US/ANZ_Manual V2.0_R3	
CLIENT BRAND:	SUPPLIER:
BARCODE (UPC):	ITEM NUMBER:
PACKAGE TYPE:	PACKAGE DIMS: 00.00 in x 00.00 in

QC CHECKS: PLEASE INITIAL & DATE BELOW



TOTAL INKS: 6 = CMYK + 2 Spots

VARNISH:

SUBSTRATE:

PRINTS:

PRINTER NAME:

IMPORTANT PRINTER CAUTION!
BARCODES

PHYSICALLY SCAN AND CONFIRM ALL BAR CODES ARE CORRECT BEFORE MASS PRINTING. PLEASE DO NOT SIMPLY READ THE NUMBERS AND ASSUME IT IS CORRECT. IF YOU ARE UNSURE, PLEASE STOP AND CONTACT YFY/JUPITER.

ATTENTION PRINTER!
COLOR MATCHING

PLEASE FOLLOW THE PANTONE CALLOUTS, INK STANDARDS OR DRAWDOWNS FOR MATCHING INK COLORS. YOU ARE EXPECTED TO ACHIEVE THE SPECIFIED STANDARDS REGARDLESS OF SUBSTRATE AND VARNISH.



Download the Ring app.

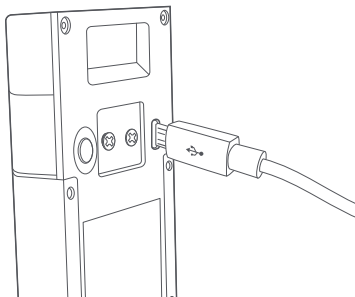
The Ring app walks you through setting up and managing your Video Doorbell.

Search for “Ring” in one of the app stores below, or visit ring.com/app



Charge your Video Doorbell.

Plug it into a USB power source with the included cable. Once the light ring is fully lit, it's ready to use.



Grab your wifi password.

You'll need it for the next step, so write it down below.

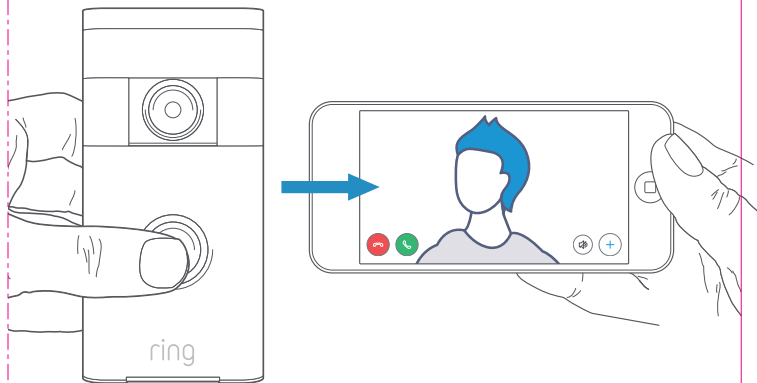
Set up your Video Doorbell near your wifi router.

In the Ring app, select **Set Up a Device**.

When prompted, select **Doorbells**, and follow the in-app instructions.

Try it out.

After setup, push the button on the front of your Video Doorbell to see video from the camera in the Ring app.



If you have problems with video quality after installation, you may need to move your router closer to your door, or add a Ring Chime Pro. Learn more at: ring.com/chime-pro



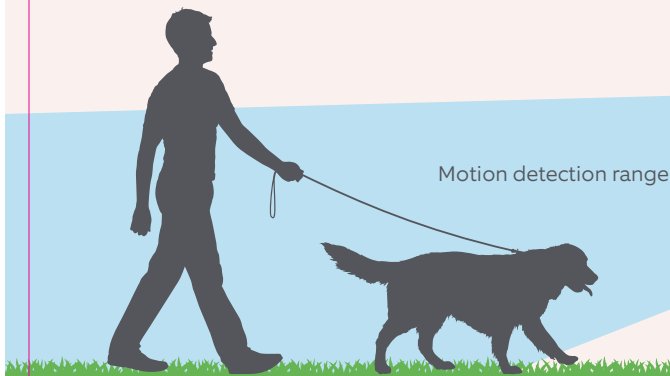


Select an install location.

For optimal performance, install your Video Doorbell four feet above the ground.

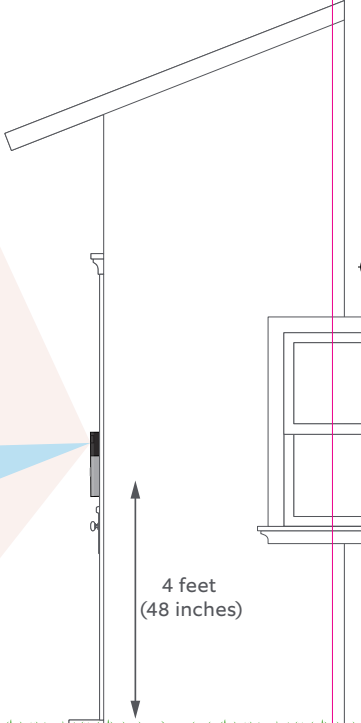
If you're connecting to existing doorbell wiring that's higher than four feet and want to angle your Video Doorbell down for a better view, you can purchase a Wedge Kit here:

ring.com/accessories



Camera field of view

Motion detection range



4 feet
(48 inches)



Remove your existing doorbell.

First, shut off power at the breaker.

Then, remove your existing doorbell button from the wall and disconnect the wires.

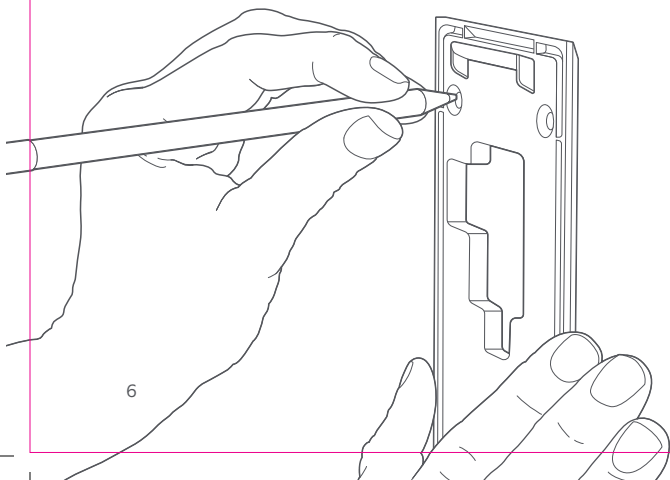
Mark the screw holes.

Use the bracket as a template to mark the four corner holes.

The recommended install height is 4 feet above the ground.



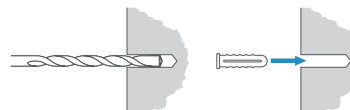
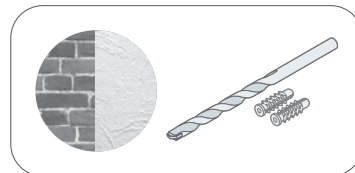
Please see the included pamphlet for installation precautions.



Install the anchors. (optional)

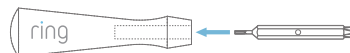
On stucco, brick, or concrete, use the provided bit to drill holes in your wall, then insert the anchors.

(If you're installing on wood or siding, you can skip this step.)



Install the mounting bracket.

Use the phillips head side of the Ring screwdriver to screw in the mounting bracket.



Keep the orange screwdriver handy. You'll need it to take your Video Doorbell off the wall for charging.

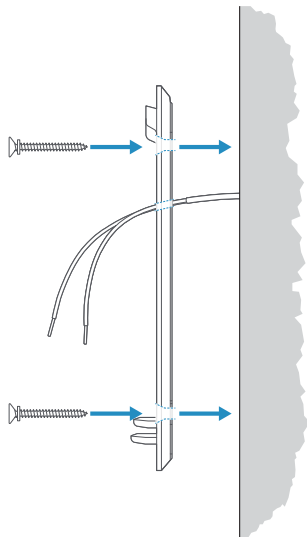




Install the mounting bracket.
(continued)

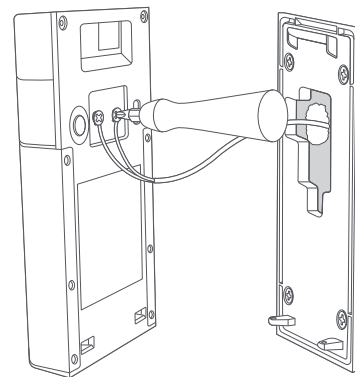
If you're wiring your Video Doorbell, feed your doorbell wires through the hole in the mounting bracket first.

Drive the screws into your wall (or into the anchors, if installed) until they are flush with the mounting bracket.



Connect the wires.
(optional)

Connect your doorbell wires to the screws on the rear of your Video Doorbell. It doesn't matter which wire connects to each screw.



Your Video Doorbell is compatible with doorbell systems supplying 8-24 volts AC, 50mA, at 50 or 60Hz, 40VA max.



Do not connect to a DC transformer, halogen or lighting transformer, or intercom.

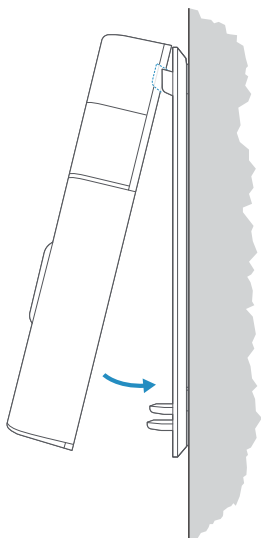




Attach your Video Doorbell to the mounting bracket.

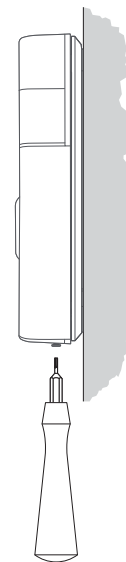
Hook the slot on the rear of your Video Doorbell onto the tab near the top of the mounting bracket.

Then, let the Doorbell pivot down to sit flush on its bracket.



Secure your Video Doorbell.

Use the star-shaped end of the included screwdriver to drive the two security screws into the bottom of your Video Doorbell.



Your Video Doorbell is now ready to use.

If you wired in your Video Doorbell, you can now restore power at the breaker.



ring 1523 26th St.
Santa Monica, CA 90404

⚠️ IMPORTANT PRODUCT INFORMATION

SAFETY INFORMATION: FAILURE TO FOLLOW THESE SAFETY INSTRUCTIONS COULD RESULT IN FIRE, ELECTRIC SHOCK, OR OTHER INJURY OR DAMAGE.

Your device has a water resistance rating of IPX4 and has been tested to withstand water splashes in all directions from an oscillating spray. However, your device is not intended for underwater use. To protect against electric shock, do not intentionally submerge or immerse your device, battery, or adapter (not included) in water or expose your device or adapter to other liquids. Do not spill any food or beverages on your device, battery, or adapter. Do not attempt to clean or polish your device, battery, or adapter with or expose your device, battery, or adapter to oil, lotion, or other abrasive substances. Do not expose your device, battery, or adapter to salt water or other conductive liquids. Do not submerge your device, battery, or adapter in water or subject them to pressurized water, high velocity water, or extremely humid conditions (such as a steam room). If your device, battery, or adapter gets wet, carefully unplug all cables without getting your hands wet and wait for it to dry completely before plugging it in again. Do not attempt to dry your device, battery, or adapter with an external heat source, such as a microwave oven or a hair dryer. To avoid risk of electric shock, do not touch your device, battery, or adapter or any wires connected to your device during a lightning storm while your device, battery, or adapter is plugged in. If your device, battery, or adapter appears to be damaged, discontinue use immediately.

Protect your device from direct sunlight. Install the device at dry locations and protect it against rain and humidity. Use only accessories supplied with your device, or specifically marketed for use with your device, to power your device. Use of third-party accessories may impact your device's performance. In limited circumstances, use of third-party accessories may void your device's limited warranty. In addition, use of incompatible third party accessories may cause damage to your device or the third-party accessory. Read all safety instructions for any accessories before using with your device.

⚠️ BATTERY SAFETY

RISK OF EXPLOSION IF BATTERY IS REPLACED BY AN INCORRECT TYPE. DISPOSE OF USED BATTERIES ACCORDING TO THE INSTRUCTIONS. Keep the battery and its power adapter in a well-ventilated area and away from heat sources, especially when in use or charging. Do not charge your battery near water or in extremely humid conditions. Do not open, disassemble, bend, deform, puncture or shred the battery. Do not modify, attempt to insert foreign objects into the battery or immerse or expose to water or other liquids. Do not expose the battery to fire, explosion or other hazard. Promptly dispose of used batteries in accordance with applicable laws and regulations. If dropped and you suspect damage, take steps to prevent any ingestion or direct contact of fluids and any other materials from the battery with skin or clothes.

For best results, use type Li-ion batteries. Install only new batteries of the same type in your product. Failure to insert batteries in the correct polarity, as indicated in the battery compartment, may shorten the life of the batteries or cause batteries to leak. Do not mix old and new batteries. Do not mix Alkaline, Standard (Carbon-Zinc) or Rechargeable (Nickel Cadmium) or (Nickel Metal Hydride) batteries. Always remove old, weak, or worn out batteries promptly and recycle or dispose of them in accordance with local and national disposal regulations.

If a battery leaks, remove all batteries and recycle or dispose of them in accordance with battery manufacturer's recommendations. If fluid from the battery comes into contact with skin or clothes, flush with water immediately.

Protect the device from direct sunlight. Install the device at dry locations and protect it against rain and humidity. The device may not get contact to salt water or other conductive liquids. The device must be charged only within a building in a dry state.

⚠️ Safely Connecting Your Ring Video Doorbell (2nd Generation) to your Home's Electrical Wiring

If you install the Ring Video Doorbell (2nd Generation) where a doorbell is already in use and you connect the Ring Video Doorbell (2nd Generation) to your home's doorbell electrical wiring, you must turn off the existing doorbell's power source at your home's circuit breaker or fuse and test that the power is off BEFORE removing the existing doorbell, installing the Ring Video Doorbell (2nd Generation), or touching electrical wires. Failure to turn off circuit breaker or fuse so could result in FIRE, ELECTRIC SHOCK, or OTHER INJURY or DAMAGE.

More than one disconnect switch may be required to turn off the equipment before servicing.

To test whether you have successfully de-energized your existing doorbell's power source, press your doorbell several times to confirm that the power is off.

If the electrical wiring in your home does not resemble any of the diagrams or instructions provided with Ring Video Doorbell (2nd Generation), if you encounter damaged or unsafe wiring, or if you are unsure or uncomfortable in performing this installation or handling electrical wiring, please consult a qualified electrician in your area.

Only use accessories that are recommended by the manufacturer. Use of third-party accessories may lead to damage to your Ring Video Doorbell (2nd Generation) or the accessory and may cause fire, electric shock, or injury.

Using Your Device Around Other Electronic Devices

Your device generates, uses, and can radiate radio frequency (RF) energy and, if not used in accordance with its instructions, may cause interference to radio communications and electronic equipment. External RF signals may affect improperly installed or inadequately shielded electronic operating systems, entertainment systems, and personal medical devices. While most modern electronic equipment is shielded from external RF signals, if in doubt, check with the manufacturer. For personal medical devices (such as pacemakers and hearing aids), consult with your physician or the manufacturer to determine if they are adequately shielded from external RF signals.

Product Specifications

Model Number: 5UM5E5

Device Name: Video Doorbell (2nd Generation)

Electrical Rating: Can connect to a doorbell system supplying 8-24VAC, 50/60Hz, 40VA (max) for continuous charging and internal doorbell control

Temperature Rating: -5°F to 120°F (-20.5°C to 48.5°C)

In the box: Installation tools and hardware.

Terms of Service and Warranty

Use of the product is subject to your registration with Ring and your agreement with the Terms of Service found at www.ring.com/terms

To review your warranty coverage, please refer to the enclosure inside this box or visit www.ring.com/warranty.



RENSEIGNEMENTS IMPORTANTS CONCERNANT LE PRODUIT

CONSIGNES DE SÉCURITÉ : LE NON-RESPECT DES PRÉSENTES CONSIGNES DE SÉCURITÉ POURRAIT CAUSER UN INCENDIE, UNE DÉCHARGE ÉLECTRIQUE OU UNE AUTRE FORME DE BLESSURE OU DE DOMMAGE.

Votre appareil a une cote de résistance à l'eau d'IPX4 et a été testé pour résister aux éclaboussures d'eau dans toutes les directions d'un vaporisateur oscillant. Votre appareil n'est toutefois pas conçu pour un usage sous l'eau. Pour vous protéger contre les décharges électriques, ne plongez pas intentionnellement votre appareil, la pile ou l'adaptateur (non inclus) dans l'eau et n'exposez pas votre appareil ou l'adaptateur à d'autres liquides. Ne renversez pas d'aliments ou de boissons sur votre appareil, la pile ou l'adaptateur. Ne tentez pas de nettoyer ou de polir votre appareil, la pile ou l'adaptateur avec de l'huile, une lotion ou une autre substance abrasive, et ne les exposez pas à ces produits. N'exposez pas votre appareil, la pile ou l'adaptateur à de l'eau salée ou à un autre liquide conducteur. N'immergez pas votre appareil, pile ou adaptateur dans l'eau et ne le soumettez pas à de l'eau sous pression, de l'eau à haute vitesse ou des conditions extrêmement humides (comme un sauna). Si votre appareil, la pile ou l'adaptateur devient mouillé, débranchez soigneusement tous les câbles sans mouiller vos mains et attendez qu'ils séchent complètement avant de les rebrancher. N'essayez pas de faire sécher votre appareil, la pile ou l'adaptateur à l'aide d'une source de chaleur externe, comme un four à micro-onde ou un sècheur à cheveux. Pour éviter les risques de décharge électrique, ne touchez pas à votre appareil, à la pile ou à l'adaptateur, ou entrez dans le câble branché à votre appareil, pendant un orage, alors que votre appareil est branché. Si votre appareil, la pile ou l'adaptateur semble endommagé, cessez l'utilisation immédiatement.

Protégez votre appareil de la lumière directe du soleil. Installez l'appareil dans un endroit sec et protégez-le de la pluie et de l'humidité.

N'utilisez que les accessoires fournis avec votre appareil ou qui sont spécialement commercialisés pour être utilisés avec celui-ci afin de l'alimenter. L'utilisation d'accessoires de fabricants tiers peut altérer la performance de votre appareil. Dans des circonstances limitées, l'utilisation d'accessoires de fabricants tiers peut annuler la garantie limitée de votre appareil. De plus, l'usage d'accessoires de fabricants tiers incompatibles peut causer des dommages à votre appareil ou à l'accessoire. Lisez toutes les consignes de sécurité de tout accessoire avant de l'utiliser avec votre appareil.

CONSIGNES DE SÉCURITÉ CONCERNANT LA PILE

RISQUE D'EXPLOSION SI LA PILE EST REMPLACÉE PAR LE MAUVAIS TYPE. JETEZ LES PILES USAGÉES SELON LES INSTRUCTIONS. MANIPULEZ AVEC SOIN. Votre appareil contient une pile rechargeable et amovible au lithium-ion de marque Ring avec démontage rapide (la « pile Ring » ou « pile »). N'utilisez pas un autre type de pile pour alimenter votre appareil. Vous ne devez pas désassembler, ouvrir, écraser, courber, déformer, percer ou broyer votre pile ni tenter d'y accéder dans votre appareil. Vous ne devez pas modifier la pile, tenter d'y insérer des corps étrangers, l'immerger ou l'exposer à de l'eau ou à d'autres liquides, l'exposer à un incendie, à une explosion ou à un autre danger. Ne court-circuitez pas la pile et ne permettez pas aux objets métalliques conducteurs d'entrer en contact avec les bornes de la pile. Évitez de laisser tomber l'appareil ou la pile. Si l'appareil ou la pile tombe par terre, en particulier sur une surface dure, et que l'usage soupçonne un dommage, ne tentez pas de le réparer. Communiquez alors avec le service à la clientèle de Ring pour obtenir de l'aide.

Utilisez uniquement le câble de recharge USB fourni dans la boîte pour recharger la pile Ring. N'utilisez pas la pile Ring avec un autre appareil pour lequel elle n'est pas conçue. L'usage d'une pile ou d'un chargeur non qualifié peut représenter un risque d'incendie, d'explosion, de fuite ou une autre forme de danger.

Gardez votre appareil, la pile et l'adaptateur d'alimentation (non inclus) dans un endroit bien aéré et loin des sources de chaleur, en particulier pendant l'utilisation ou la recharge. Ne rechargez pas votre pile près de l'eau ou dans des conditions très humides. Rechargez votre pile uniquement à l'intérieur, dans des conditions sèches. Votre pile fonctionne à l'aide du câble USB fourni et d'un chargeur ou d'un port USB (tous les deux non inclus) qui sont conformes aux normes en matière de sécurité, comme CEI 60950.

Branchez votre sonnette vidéo Ring Video Doorbell (2nd Generation) de façon sécuritaire au câblage électrique de votre maison

Veuillez consulter un électricien certifié si l'un des éléments ci-dessous s'applique à vous :

- Vous manquez d'expérience dans les projets de câblage électrique.
- Vous remarquez des câbles endommagés ou non sécuritaires.

Le câblage électrique de votre maison ne ressemble pas aux diagrammes ou aux instructions fournis avec la sonnette Ring Video Doorbell (2nd Generation).

Si vous remplacez une sonnette existante, étiquette la source d'alimentation de cette sonnette avec le disjoncteur ou le fusible correspondant sur le panneau électrique de votre maison, puis confirmez que l'alimentation est coupée AVANT de retirer la sonnette existante, d'installer la sonnette Ring Video Doorbell (2nd Generation) ou de toucher aux câbles électriques. Ne pas fermer le circuit du disjoncteur ou du fusible pourrait engendrer un INCENDIE, une DÉCHARGE ÉLECTRIQUE ou une AUTRE forme de BLESSURE ou de DOMMAGE.

Il pourrait être nécessaire de fermer plus d'un interrupteur avant l'entretien.

Pour vérifier si vous avez fermé avec succès la source d'alimentation de votre sonnette existante, appuyez sur la sonnette plusieurs fois pour confirmer que l'alimentation est coupée.

Utilisation de votre appareil autour d'autres appareils électroniques

Votre équipement génère, utilise et peut émettre de l'énergie radiofréquence et, s'il n'est pas installé et utilisé conformément aux instructions, peut causer des interférences nuisibles aux communications radio et aux autres équipements électroniques. Les signaux RF externes peuvent nuire au fonctionnement des systèmes d'exploitation électroniques, des systèmes de divertissement et des dispositifs médicaux personnels mal installés ou mal protégés. Alors que la plupart des équipements électroniques modernes sont protégés contre les signaux RF externes, en cas de doute, vérifiez auprès du fabricant. Pour les dispositifs médicaux personnels (tels que les stimulateurs cardiaques et les aides auditives), consultez votre médecin ou le fabricant pour déterminer s'ils sont adéquatement protégés contre les signaux RF externes.

Caractéristiques du produit

Numéro de modèle : SUM5E5

Nom de l'appareil : Video Doorbell (2nd Generation)

Valeur nominale électrique : Peut se brancher à un système de sonnette fournissant un c.a. de 8 V à 24 V, 50/60Hz, 40VA (max) pour la charge continue et le contrôle interne de la sonnette

Cote de température : -20,5 °C à 48,5 °C (-5 °F à 120 °F)

Dans la boîte : Outils d'installation et matériel.

Conditions de l'entretien et de la garantie

Pour être autorisé à utiliser le produit, vous devez vous inscrire auprès de Ring et accepter les conditions d'utilisation qui figurent à l'adresse www.ring.com/terms (en anglais seulement).

Pour consulter les détails de votre garantie, reportez-vous au document joint à l'intérieur de l'emballage ou consultez la page www.ring.com/warranty (en anglais seulement).

For Consumers in the USA

This device complies with Part 15 of the FCC Rules. Operation is subject to the following two conditions: (1) this device may not cause harmful interference, and (2) this device must accept any interference received, including interference that may cause undesired operation.

NOTE: This equipment has been tested and found to comply with the limits for a Class B digital device, pursuant to Part 15 of the FCC Rules. These limits are designed to provide reasonable protection against harmful interference in a residential installation. This equipment generates, uses and can radiate radio frequency energy and, if not installed used in accordance with the instructions, may cause harmful interference to radio communications.

However, there is no guarantee that interference will not occur in a particular installation. If this equipment does cause harmful interference to radio or television reception, which can be determined by turning the equipment off and on, the user is encouraged to try to correct the interference by one or more of the following measures:

Reorient or relocate the receiving antenna.

Increase the separation between the equipment and receiver.

Connect the equipment into an outlet on a circuit different from that to which the receiver is connected.

Consult the dealer or an experienced radio/TV technician for help.

Pursuant to Section 15.21 of the FCC rules, changes or modifications to a Product by the user that are not expressly approved by the party responsible for compliance could void the user's authority to operate the equipment.

The device meets the FCC Radio Frequency Emission Guidelines. Information on the product is on file with the FCC and can be found by inputting such Product's FCC ID (which can be found on the device) into the FCC ID Search form available at <https://www.fcc.gov/oet/ea/fccid>.

The party responsible for FCC compliance is:

Ring LLC, 1523 26th St, Santa Monica, CA USA, 90404

FCC Radiation Exposure Statement

This device complies with FCC radiation exposure limits set forth for an uncontrolled environment and it also complies with Part 15 of the FCC RF Rules. This equipment must be installed and operated in accordance with provided instructions and the antenna(s) used for this transmitter must be installed to provide a separation distance of at least 20 cm from all persons and must not be co-located or operating in conjunction with any other antenna or transmitter. End-users and installers must be provided with antenna installation instructions and consider removing the no-collocation statement.

For Consumers in Canada

This Class B digital apparatus complies with CAN ICES-3 (B)/NMB-3(B).

Notice: TheISED Canada regulations provide that changes or modifications not expressly approved by Ring could void your authority to operate this equipment.

This device contains licence-exempt transmitter(s)/receiver(s) that comply with Innovation, Science and Economic Development Canada's licence-exempt RSS(s). Operation is subject to the following two conditions:

(1) This device may not cause interference.

(2) This device must accept any interference, including interference that may cause undesired operation of the device.

Information Regarding Exposure to Radio Frequency Energy

This equipment complies with IC RSS-102 RF exposure limits set forth for an uncontrolled environment.

Radio Frequency Compliance

This transmitter must not be co-located or operating in conjunction with any other antenna or transmitter. This equipment should be installed and operated with a minimum distance of 20 centimeters between the radiator and your body.

Pour les consommateurs résidant au Canada

Cet appareil numérique de classe B est conforme à la norme CAN ICES-003 ICES-3 (B)/NMB-3(B).

Avis : le règlement d'ISDE Canada prévoit que les changements ou les modifications non expressément approuvés par Ring pourraient annuler votre droit d'exploiter cet équipement.

Cet appareil contient un ou plusieurs émetteurs-récepteurs exempts de licence et conforme aux cahiers des charges sur les normes radioélectriques (CNR) d'Innovation, Sciences et Développement économique Canada applicables aux appareils radio exempts de licence. Son utilisation est autorisée aux deux conditions suivantes :

(1) l'appareil ne doit pas produire d'interférences

(2) l'appareil doit accepter toute interférence radioélectrique reçue, même si cette interférence est susceptible d'en compromettre le fonctionnement.

Renseignements relatifs à l'exposition aux radiofréquences

Cet équipement est conforme aux limites d'exposition décrites dans le CNR 102 d'IC, prévues pour des environnements non contrôlés.

Conformité aux règles d'exposition aux radiofréquences

Cet émetteur ne doit pas être placé au même endroit ou ne doit pas fonctionner en même temps qu'une autre antenne ou un autre émetteur. Cet équipement devrait être installé et être utilisé avec une distance minimum de 20 centimètres entre le radiateur et votre corps.



For Consumers in Australia



Our goods come with guarantees that cannot be excluded under the Australian Consumer Law. You are entitled to a replacement or refund for a major failure and compensation for any other reasonably foreseeable loss or damage. You are also entitled to have the goods repaired or replaced if the goods fail to be of acceptable quality and the failure does not amount to a major failure. Goods presented for repair may be replaced by refurbished goods of the same type rather than being repaired. Refurbished parts may be used to repair the goods.

I. LIMITED WARRANTY

This is a "Limited Warranty" which gives you specific legal rights. You may also have other rights, which vary from jurisdiction to jurisdiction. Some jurisdictions, such as Australia, do not allow the exclusion or limitation of incidental or consequential damages, so the limitation or exclusion under this Limited Warranty may not apply to you. Please keep your dated sales receipt; it is required for all warranty requests. Except as otherwise provided by the Australian Consumer Law, any dispute or controversy regarding this Limited Warranty arising from your use of your Ring products will be resolved by final and binding bilateral arbitration in accordance with the "Dispute Resolution" section of the Terms of Service, found www.ring.com/terms.

1. WHAT THE WARRANTY COVERS

For a period of one (1) year from the date of purchase of your Ring product, or one (1) year from the date of receipt of your replacement Ring product (see Section II below for details), Ring LLC ("Ring") will, at its sole option, repair or replace any Ring products that malfunction due to defective parts or workmanship at no charge to you. This warranty is not transferable and applies only to the original consumer purchaser. Ring may, in its sole discretion, make any repair or replacement with new or refurbished product or components. If the product or component requiring repair or replacement is no longer available, Ring may, in its sole discretion, replace such product with a similar product of similar function.

2. WHAT THE WARRANTY DOES NOT COVER

Repair service, damage due to misuse, abuse, negligence or casualty (e.g., fire), acts of God (including but not limited to lightning, flood, tornado, earthquake, or hurricane), and consumable parts (including batteries) are not covered by this warranty. Damage from unauthorized service or modification of the product or of any furnished component will void this warranty in its entirety. This warranty does not include reimbursement for inconvenience, installation, loss of use, or unauthorized service. In addition, this warranty does not cover any losses, injuries to persons, loss of property or general damages. This warranty, our theft protection, and community support services do not apply to any products purchased from third party sellers on eBay and other online marketplaces. We strongly suggest that you do not buy Ring products from any unauthorized sellers, as such products may be used, defective, counterfeit or may not be designed for use in your country. This warranty covers only Ring products and is not extended to other equipment, components, or devices that a customer uses in conjunction with our products. Except in relation to any guarantees you may be entitled to under the Australian Consumer Law, Ring's maximum liability under this warranty is limited to the original purchase price of the Ring product in question. THIS WARRANTY IS EXPRESSLY IN LIEU OF ALL OTHER WARRANTIES, (EXCEPT THOSE GUARANTEES YOU MAY BE ENTITLED TO UNDER THE AUSTRALIAN CONSUMER LAW), EXPRESSED OR IMPLIED, INCLUDING ANY WARRANTY, REPRESENTATION OR CONDITION OF MERCHANTABILITY OR THAT THE PRODUCTS ARE FIT FOR ANY PARTICULAR PURPOSE OR USE, AND SPECIFICALLY IN LIEU OF ALL SPECIAL, INDIRECT, INCIDENTAL OR CONSEQUENTIAL DAMAGES. IF RING LLC CANNOT LAWFULLY DISCLAIM STATUTORY OR IMPLIED WARRANTIES, THEN TO THE EXTENT PERMITTED BY LAW AND EXCEPT IN RELATION TO ANY GUARANTEES YOU MAY BE ENTITLED TO UNDER THE AUSTRALIAN CONSUMER LAW, ALL SUCH WARRANTIES SHALL BE LIMITED IN DURATION TO THE DURATION OF THIS EXPRESS LIMITED WARRANTY AND TO REPAIR OR REPLACEMENT SERVICE. SOME JURISDICTIONS DO NOT ALLOW LIMITATIONS ON HOW LONG A STATUTORY OR IMPLIED WARRANTY LASTS, SO THE ABOVE LIMITATIONS MAY NOT APPLY TO YOU.

EXCEPT AS OTHERWISE PROVIDED BY THE AUSTRALIAN CONSUMER LAW, REPAIR OR REPLACEMENT SHALL BE THE SOLE REMEDY OF THE CUSTOMER AND THERE SHALL BE NO LIABILITY ON THE PART OF RING LLC FOR ANY SPECIAL, INDIRECT, INCIDENTAL OR CONSEQUENTIAL DAMAGES, INCLUDING BUT NOT LIMITED TO ANY LOSS OF BUSINESS OR PROFITS, WHETHER OR NOT FORESEEABLE. SOME JURISDICTIONS, SUCH AS THOSE IN WHICH THE AUSTRALIAN CONSUMER LAW APPLIES, DO NOT ALLOW THE EXCLUSION OR LIMITATION OF INCIDENTAL OR CONSEQUENTIAL DAMAGES, SO THE ABOVE LIMITATION AND EXCLUSIONS MAY NOT APPLY TO YOU.

This limited warranty gives you specific rights. You may have additional rights under applicable law, and this limited warranty does not affect such rights.

II. THEFT PROTECTION

If your Ring camera or doorbell product is stolen at any time after your purchase, Ring will replace the stolen device at no charge to you. This theft protection is not transferable and applies only to the original consumer purchaser. Coverage of this theft protection is limited to one (1) replacement only for each Ring camera or doorbell product that you have purchased. Theft protection does not apply to any products purchased from third party sellers on eBay and other online marketplaces. Any claim based on theft of your Ring camera or doorbell product must be submitted within fifteen (15) days of the theft and include the original sales receipt, and a copy of a police report evidencing that you reported the theft to the police. Failure to report the theft to police voids this theft protection.

III. How to obtain service / replacement

To obtain the benefit of the above limited warranty or theft protection, please contact Ring community support at: help@ring.com

+61 2 8294 9169

1 300 205 983 (Toll Free)

For warranty requests where the Australian Consumer Law does not apply: Please be prepared to describe the product that needs service, the nature of the problem and to provide proof of purchase. You will also be required to return your existing device in accordance with directions that will be provided by Ring. Ring has no warranty obligations with respect any products that are excluded from warranty pursuant to Paragraph 2 above, as reasonably determined by Ring, and the owner of such device shall bear all shipping costs for the return of such product to owner. Any claim under this Limited Warranty must be submitted to Ring before the end of the warranty period described above. Please allow up to fourteen (14) business days for your warranty request to be processed. For replacement requests: Please be prepared to describe the product that needs to be replaced and a copy of the police report. Please allow up to fourteen (14) business days for your replacement to be processed.

ring 1523 26th St.
Santa Monica, CA 90404

© 2020 Ring LLC or its affiliates.

Ring and all related logos are trademarks of Ring LLC or its affiliates.

© 2020 Ring LLC ou ses sociétés affiliées.

Ring et les logos connexes sont des marques de commerce appartenant à Ring SARL ou à ses sociétés affiliées.