



100mm

ring



Spotlight Cam Wired

150mm

# 1. Set up your Spotlight Cam in the Ring app.

## Download the Ring app

The Ring app will walk you through setting up and managing your Spotlight Cam.

Search for “Ring” in one of the app stores below, or visit:  
[ring.com/app](https://ring.com/app).



## Grab your Wi-Fi password

It's required for the in-app setup. Write it down below so it's handy when you need it:

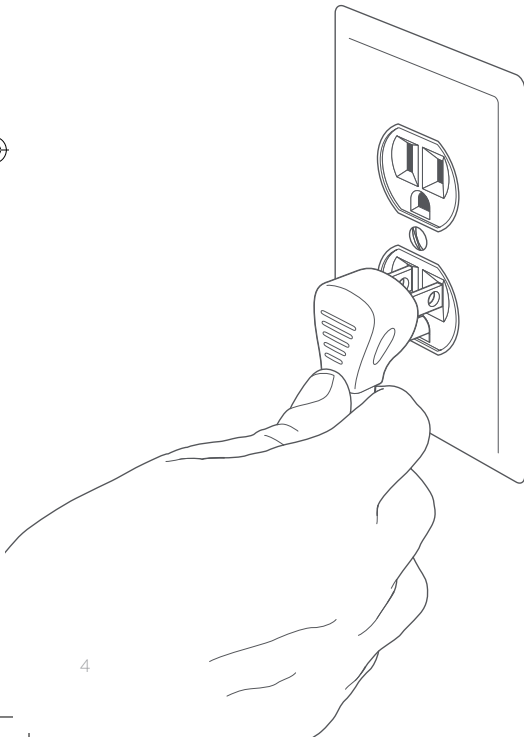
Your Wi-Fi password





## Plug your Spotlight Cam into a power outlet

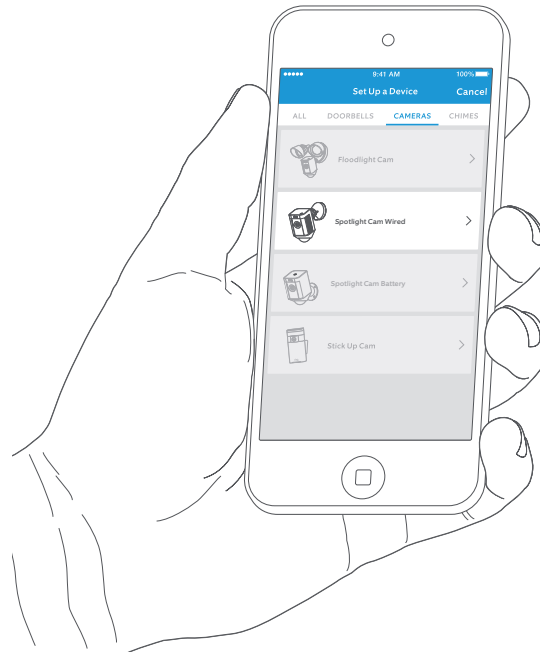
Plug your Spotlight Cam into an outlet in the same room as your Wi-Fi router to set it up.



4

## Set up your Spotlight Cam in the Ring app

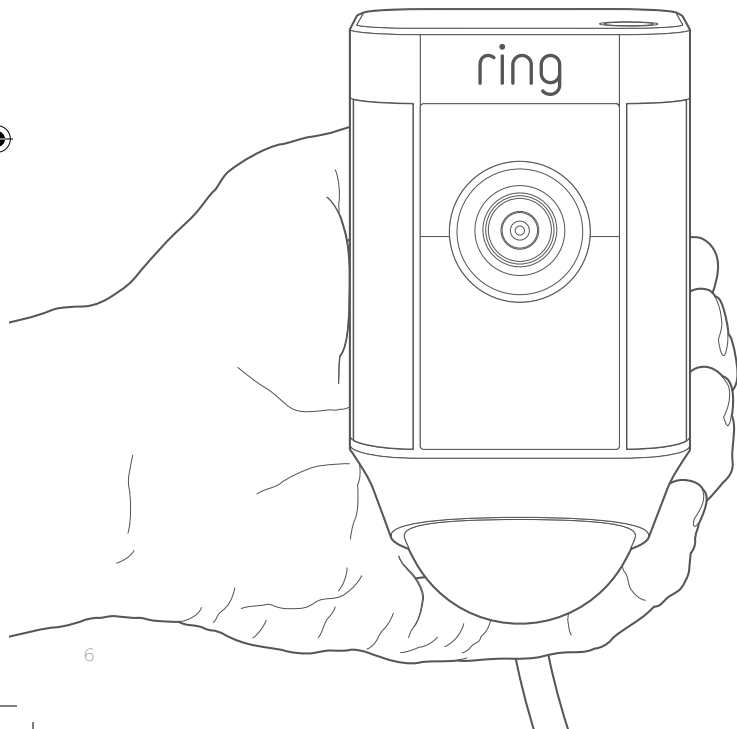
In the Ring app, select **Set Up Device** and follow the in-app instructions.



5

## Try it out!

After setup, select the Live View button to see video from the camera in the Ring app.

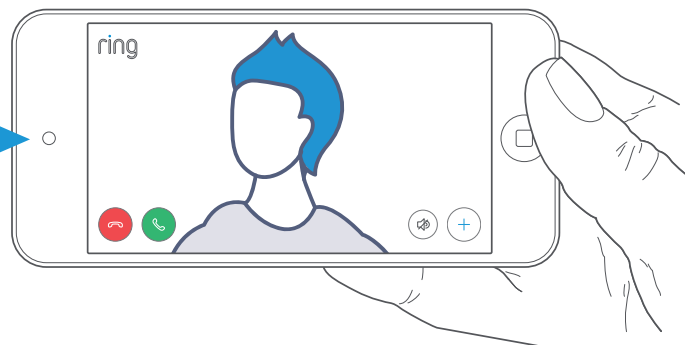


6

## White light flashing?

If the light on the bottom of your Spotlight Cam is flashing after setup, it's updating its internal software.

The light will stop flashing when the update is completed. This update can take up to a few minutes.



7



## Test video quality outside

Now, unplug your Spotlight Cam and take it outside to where you want to install it. Plug Spotlight Cam into an outdoor outlet and test video quality again.



## 2. Install your Spotlight Cam on the wall.



## Before you begin

This is everything you'll need to install your Spotlight Cam.



### Screwdriver

Use the screwdriver handle to hold the provided bit.



### Phillips Bit

Use the Phillips bit for installing the mounting bracket and tightening the security screw.



### Drill Bit

Use this to pre-drill holes if installing on a masonry surface, such as stucco or brick.



### Mounting Bracket

Attach this to the wall first, then slot Spotlight Cam into the mounting bracket. It also features a built-in level.



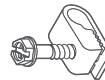
### Install Screws (5)

Use these to install the mounting bracket on your wall.



### Wall Anchors (16)

Use these to attach the mounting bracket and the cable clips to your wall, if installing on a masonry surface, such as stucco or brick.



### Cable Clips (11)

Use these to attach the power cable to your wall.



## How it all fits together

Setup  
Button

ring

Lights

Motion  
Detector

Install  
Screws

Mounting  
Bracket

Security  
Screw

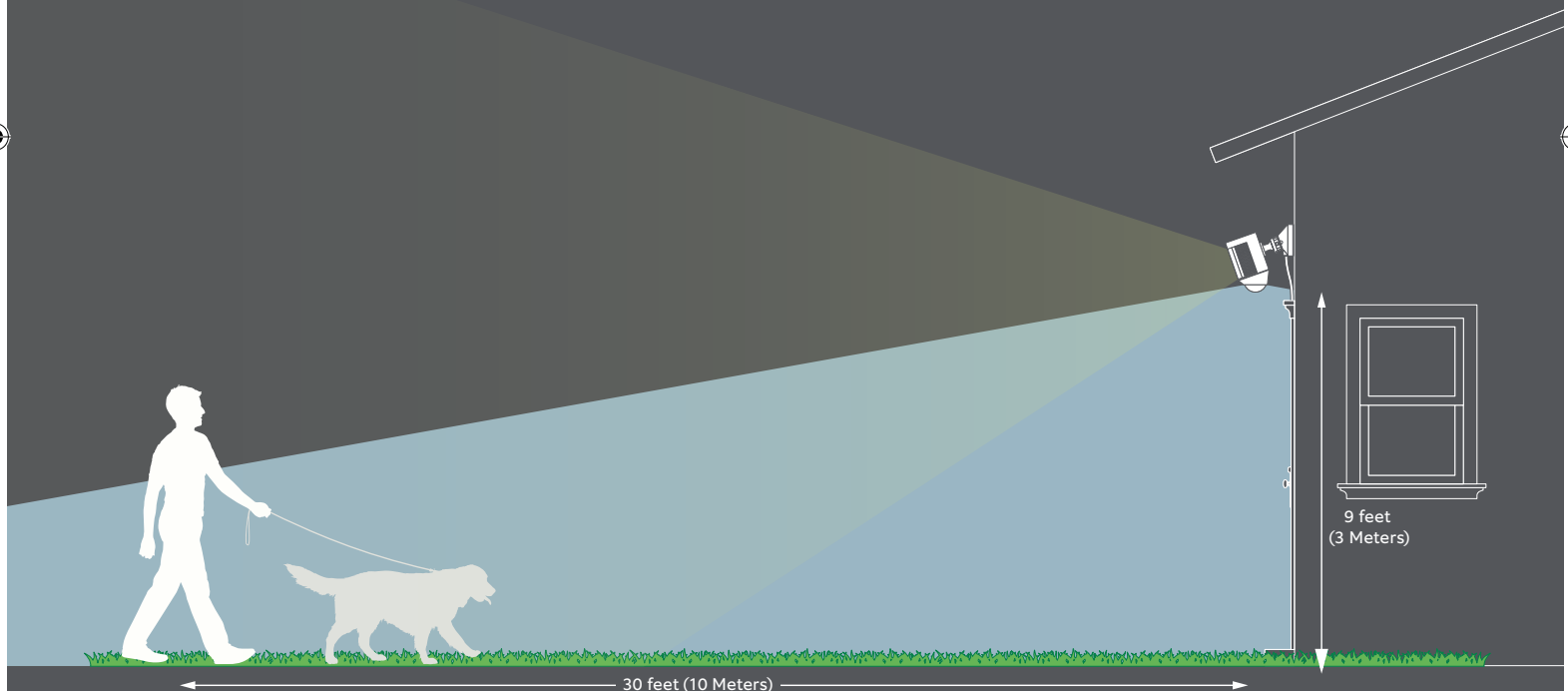
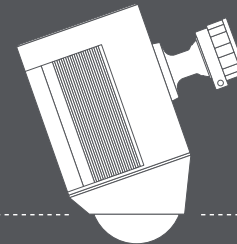
Wire  
Clip



## Select an install height

When mounted at 9 feet off the ground, with the motion detector parallel to the ground, the motion sensor is optimized to detect human-sized objects at up to 30 feet.

Parallel to ground





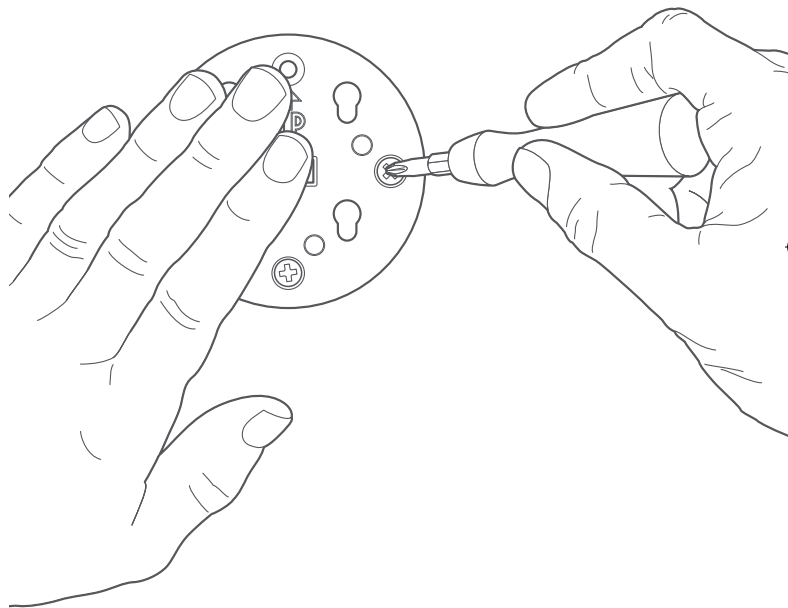


## Install the mounting bracket

Use the built-in level to make sure your Spotlight Cam will be level before marking your holes.

If installing on a masonry surface, first drill holes using the provided drill bit. Insert the wall anchors before installing the screws.

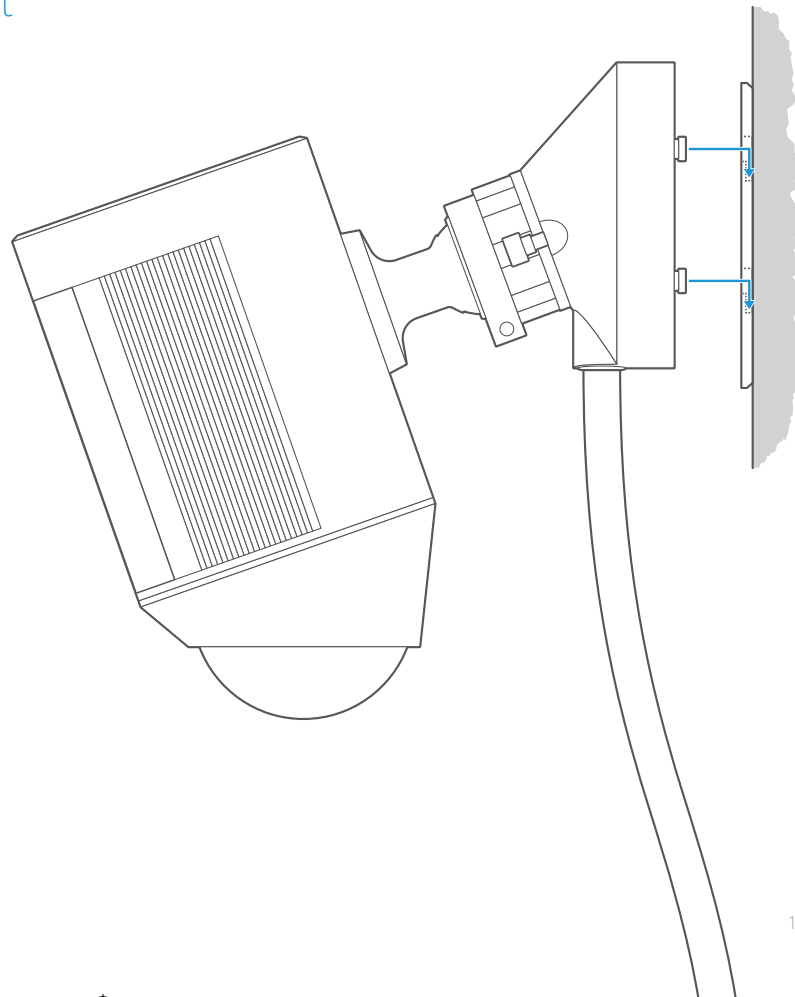
If installing on a wood surface, use the install screws to screw the mounting bracket directly into your wall.





## Attach the base of Spotlight Cam to the mounting bracket

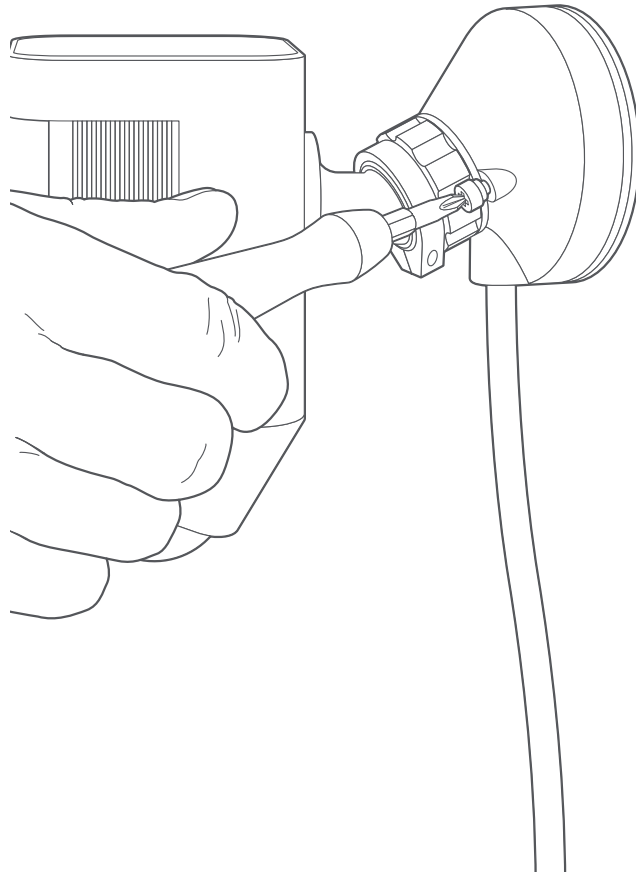
Slot the base down to lock it to the mounting bracket.





## Tighten the security screw

Using the Phillips end of the screwdriver bit, tighten the security screw on the right until your Spotlight Cam is secure.





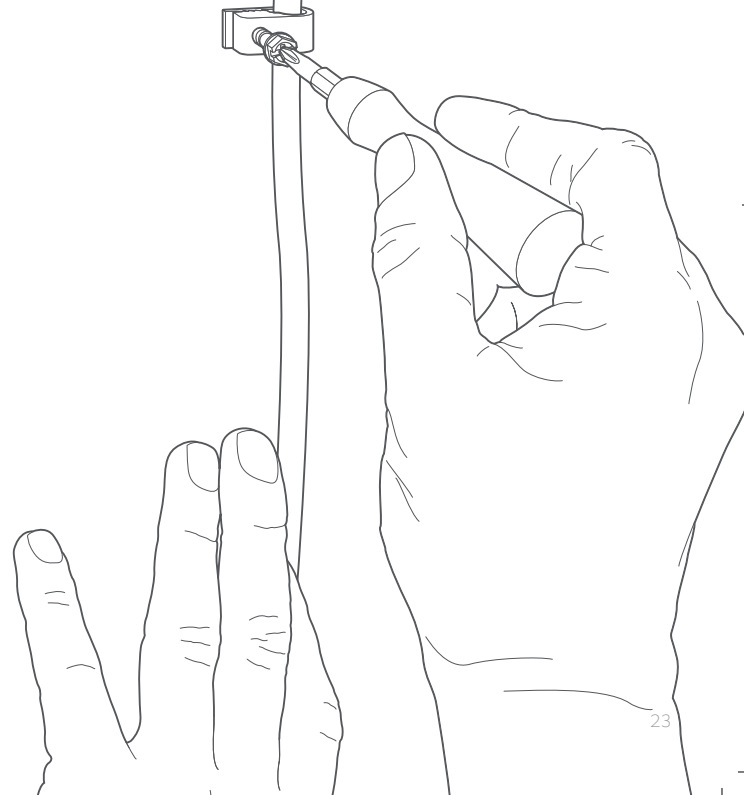
## Secure the cable

Use the provided cable clips to secure the cable on your wall.

Use the included drill bit to pre-drill holes in the wall and insert the provided anchors first if installing on a masonry surface, like stucco or brick.



The power cable can be painted to match the wall.

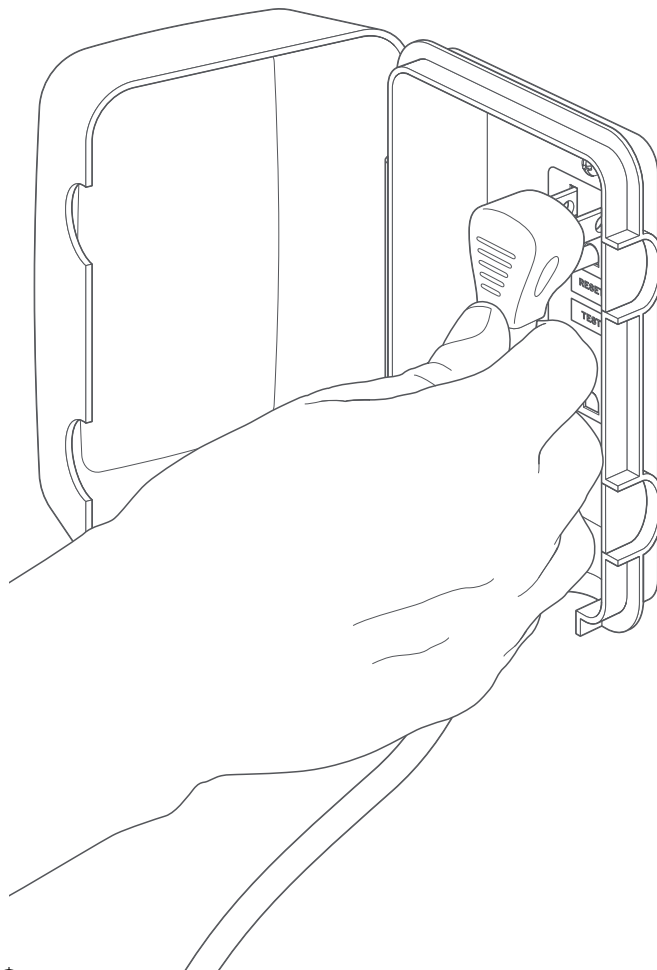




## Plug Spotlight Cam in

If Spotlight Cam is not already plugged into a power outlet, plug it in now.

If you've already completed the in-app setup, wait about a minute for Spotlight Cam to power up and come back online.

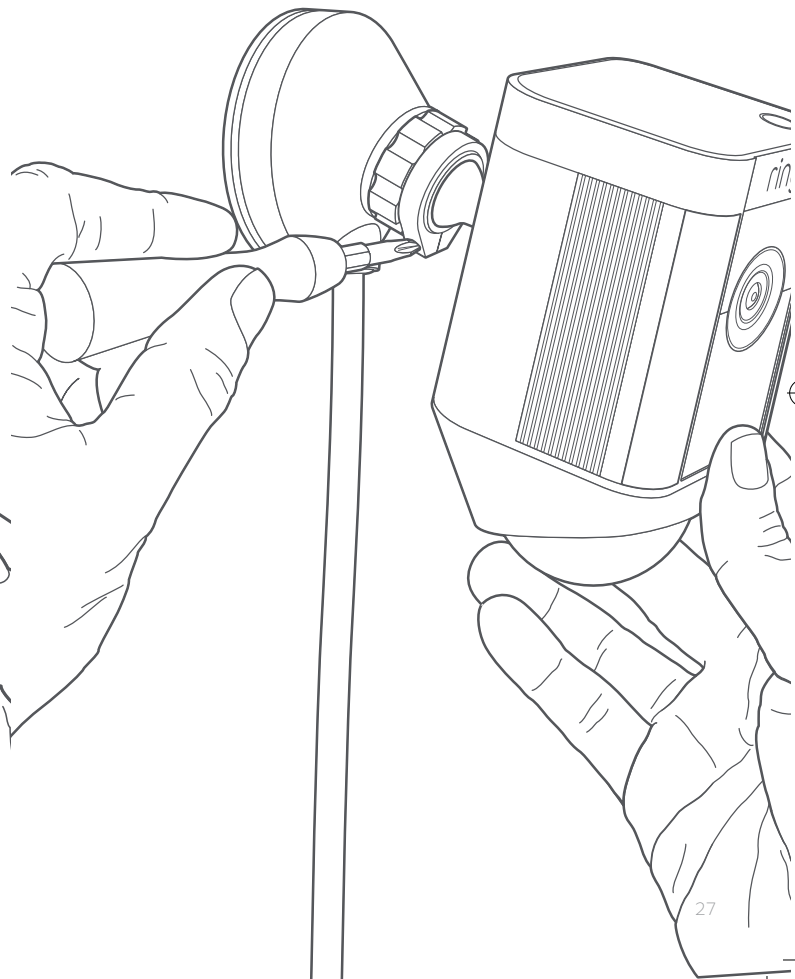
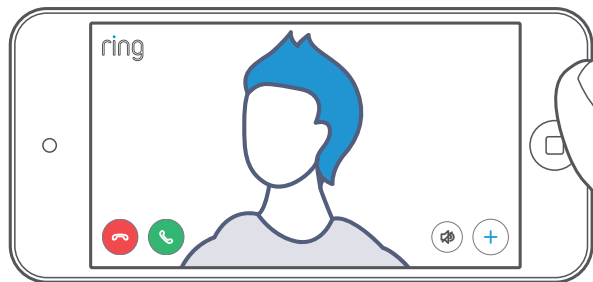




## Adjust the camera angle

To ensure accurate motion detection, position the camera with the motion detector parallel to the ground.

Tighten the side screw on the left to secure the camera position.





For additional help, visit:

[ring.com/help](https://ring.com/help)

Or give us a call...

**US 1 800 656 1918**

---

**UK 01727 263045**

---

**FR +80087009781**

---

**DE +80087009781**

---

**AU 1 300 205 983**

---

**NZ +64 9 887 9871**

---

**Mexico (D.F) 52 55 8526 5445**

---

**Worldwide +1 310 929 7085**

---

For a list of all our customer support numbers, visit: [ring.com/callus](https://ring.com/callus)

To review your warranty coverage, please visit [www.ring.com/warranty](https://www.ring.com/warranty).

© 2019 Ring LLC or its affiliates.

Ring and all related logos are trademarks of Ring LLC or its affiliates.

Last updated: 06/19/19

2520A1803L-A02FX



ring 1523 26th St.  
Santa Monica, CA 90404

This device complies with Part 15 of the FCC Rules. Operation is subject to the following two conditions: (1) this device may not cause harmful interference, and (2) this device must accept any interference received, including interference that may cause undesired operation.

Warning: Changes or modifications to this unit not expressly approved by the party responsible for compliance could void the user's authority to operate the equipment.

NOTE: This equipment has been tested and found to comply with the limits for a Class B digital device, pursuant to Part 15 of the FCC Rules. These limits are designed to provide reasonable protection against harmful interference in a residential installation. This equipment generates, uses and can radiate radio frequency energy and, if not installed and used in accordance with the instructions, may cause harmful interference to radio communications.

However, there is no guarantee that interference will not occur in a particular installation. If this equipment does cause harmful interference to radio or television reception, which can be determined by turning the equipment off and on, the user is encouraged to try to correct the interference by one or more of the following measures:

Reorient or relocate the receiving antenna.

Increase the separation between the equipment and receiver.

Connect the equipment into an outlet on a circuit different from that to which the receiver is connected.

Consult the dealer or an experienced radio/TV technician for help.



Hereby, Ring LLC declares that this consumer electronic is in compliance with the essential requirements and other relevant provisions of Directive 1999/5/EC. The declaration of conformity may be consulted at [www.ring.com/DoC.pdf](http://www.ring.com/DoC.pdf).

Protect the device from direct sunlight. Install the device at dry locations and protect it against rain and humidity. The device may not get contact to salt water or other conductive liquids. The device must be charged only within a building in a dry state.

To review your warranty coverage, please visit [www.ring.com/warranty](http://www.ring.com/warranty)

© 2019 Ring LLC or its affiliates

Ring and all related logos are trademarks of Ring LLC or its affiliates.

#### FCC Radiation Exposure Statement

This device complies with FCC radiation exposure limits set forth for an uncontrolled environment and it also complies with Part 15 of the FCC RF Rules. This equipment must be installed and operated in accordance with provided instructions and the antenna(s) used for this transmitter must be installed to provide a separation distance of at least 20 cm from all persons and must not be co-located or operating in conjunction with any other antenna or transmitter. End-users and installers must be provided with antenna installation instructions and consider removing the no-collocation statement.





#### Canada Statement

This device complies with Industry Canada's licence-exempt RSSs. Operation is subject to the following two conditions:

- (1) This device may not cause interference; and
- (2) This device must accept any interference, including interference that may cause undesired operation of the device.

Le présent appareil est conforme aux CNR d'Industrie Canada applicables aux appareils radio exempts de licence. L'exploitation est autorisée aux deux conditions suivantes :

- (1) l'appareil ne doit pas produire de brouillage;
- (2) l'utilisateur de l'appareil doit accepter tout brouillage radioélectrique subi, même si le brouillage est susceptible d'en compromettre le fonctionnement.

The device meets the exemption from the routine evaluation limits in section 2.5 of RSS 102 and compliance with RSS-102 RF exposure, users can obtain Canadian information on RF exposure and compliance.

Le dispositif rencontre l'exemption des limites courantes d'évaluation dans la section 2.5 de RSS 102 et la conformité à l'exposition de RSS-102 rf, utilisateurs peut obtenir l'information canadienne sur l'exposition et la conformité de rf.

This transmitter must not be co-located or operating in conjunction with any other antenna or transmitter. This equipment should be installed and operated with a minimum distance of 20 centimeters between the radiator and your body.

Cet émetteur ne doit pas être Co-placé ou ne fonctionnant en même temps qu'aucune autre antenne ou émetteur. Cet équipement devrait être installé et actionné avec une distance minimum de 20 centimètres entre le radiateur et votre corps.

