

101.6mm

2

Install your Ring Doorbell Pro

101.6 mm



If you need extra help...

Ring Community Support is available 7 days a week, and our online help center is accessible 24/7.

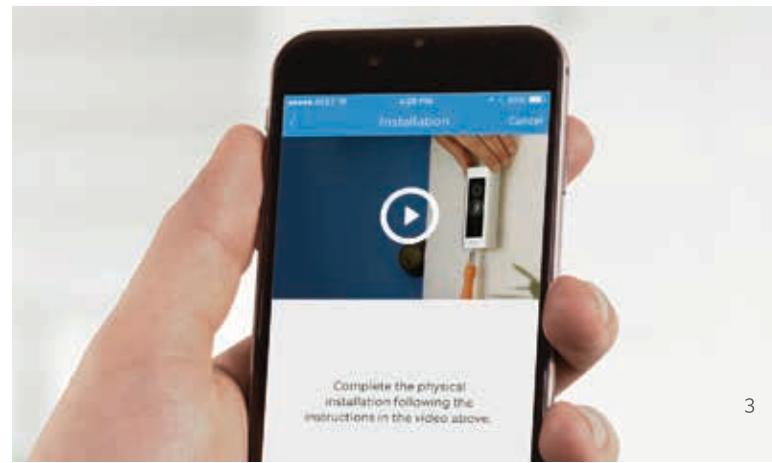
Online Help Center:
ring.com/help

Ring Community Support:
1.800.656.1918
help@ring.com

There's a video on this whole process...

There's a video in the Ring app on the installation process outlined in this manual. We recommend watching that first, and referring to this manual if you need extra help.

Select the + sign to Add a New Device (or tap Set Up a Device), then select Video Doorbell Pro to access this video:



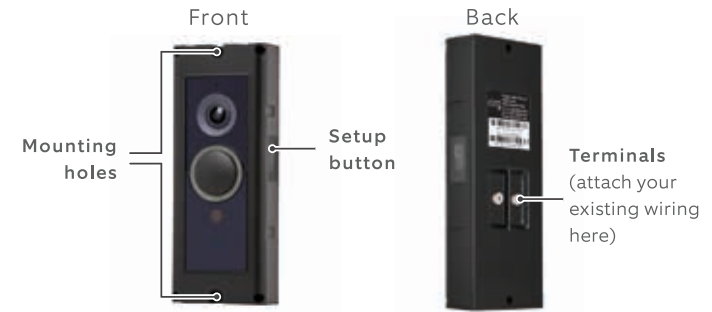
2

3

508 mm

Step 1

Say "Hello" to your Ring Video Doorbell Pro

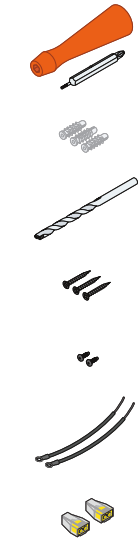


4 Faceplates
Pick the one that best matches your home...or your mood. Change it any time.

4

Step 2

Check out all the cool stuff in the box



1 Screwdriver - Use the Phillips end for the mounting screws and star-shaped end for the security screw.

3 Anchors - For installing on concrete, stucco, or brick.

1 Drill Bit - To drill holes for the (optional) anchors.

3 Mounting Screws - Use two to mount your Ring.

2 Security Screws - Use one to secure the faceplate.

2 Extra Wires - To attach your existing wires to your Ring.

2 Wire Connectors - To connect the extra wires (above) to your existing wires.

5

105g双粉纸, 4 + 4c, 过水油, 折页



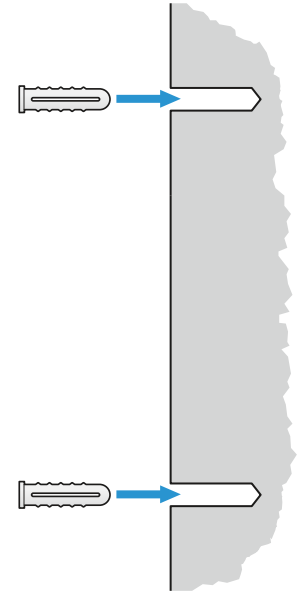
Step 3 Remove your existing doorbell

Remove your existing doorbell from the wall and disconnect the wires.

Step 4 Install anchors (optional)

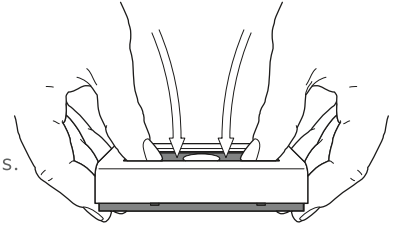
On **stucco, brick, or concrete**, use the provided bit to drill two holes in your wall, and install the anchors.

If you're installing on **wood or siding**, put the anchors in that drawer of stuff you never use and skip this step.

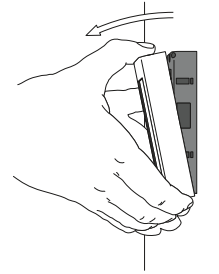


Step 5 Remove the Faceplate

Remove the faceplate on your Ring Doorbell Pro to access the mounting holes.



i After your Ring Doorbell is installed, remove the faceplate like this:



Step 6 Connect Ring Doorbell to your existing wires

The wire clips and extra wires are optional. Connect your Ring Doorbell to your existing doorbell wiring. Then feed the wiring into your wall, and screw in your Ring Doorbell.



i It doesn't matter which wire connects to which screw.

Step 7 Restore power at the breaker

The hard part is over—congrats! After restoring power at the breaker, open the Ring app, select the option to Set Up a New Device, and follow the in-app instructions.



FCC Interference Statement:

This equipment has been tested and found to comply with the limits for a Class B digital device, pursuant to Part 15 of the FCC Rules. These limits are designed to provide reasonable protection against harmful interference in a residential installation. This equipment generates, uses and can radiate radio frequency energy and, if not installed and used in accordance with the instructions, may cause harmful interference to radio communications. However, there is no guarantee that interference will not occur in a particular installation. If this equipment does cause harmful interference to radio or television reception, which can be determined by turning the equipment off and on, the user is encouraged to try to correct the interference by one or more of the following measures:

- Reorient or relocate the receiving antenna.
- Increase the separation between the equipment and receiver.
- Connect the equipment into an outlet on a circuit different from that to which the receiver is connected.
- Consult the dealer or an experienced radio/TV technician for help.

FCC Caution: Any changes or modifications not expressly approved by the party responsible for compliance could void the user's authority to operate this equipment.

This device complies with Part 15 of the FCC Rules. Operation is subject to the following two conditions: (1) This device may not cause harmful interference, and (2) this device must accept any interference received, including interference that may cause undesired operation.

This device and its antenna(s) must not be co-located or operating in conjunction with any other antenna or transmitter.

For product available in the USA/Canada market, only channel 1~11 can be operated. Selection of other channels is not possible.

FCC Radiation Exposure Statement:

This equipment complies with FCC radiation exposure limits set forth for an uncontrolled environment. This equipment should be installed and operated with minimum distance 20cm between the radiator & your body.

This device contains licence-exempt transmitter(s)/receiver(s) that comply with Innovation, Science and Economic Development Canada's licence-exempt RSS(s). Operation is subject to the following two conditions:

1. This device may not cause interference.
 2. This device must accept any interference, including interference that may cause undesired operation of the device.
- L'émetteur/récepteur exempt de licence contenu dans le présent appareil est conforme aux CNR d'Innovation, Sciences et Développement économique Canada applicables aux appareils radio exempts de licence. L'exploitation est autorisée aux deux conditions suivantes :
1. L'appareil ne doit pas produire de brouillage;
 2. L'appareil doit accepter tout brouillage radioélectrique subi, même si le brouillage est susceptible d'en compromettre le fonctionnement.

IC Radiation Exposure Statement:

This equipment complies with IC RSS-102 radiation exposure limits set forth for an uncontrolled environment. This equipment should be installed and operated with minimum distance **20cm** between the radiator & your body.

Cet équipement est conforme aux limites d'exposition aux rayonnements IC établies pour un environnement non contrôlé. Cet équipement doit être installé et utilisé avec un minimum de 20cm de distance entre la source de rayonnement et votre corps.

The transmitter module may not be co-located with any other transmitter or antenna.
Le module émetteur peut ne pas être coïmplanté avec un autre émetteur ou antenne.

CAN ICES-003 (B)/NMB-003(B)

The Country Code Selection feature is disabled for products marketed in the US/Canada

For product available in the USA/Canada market, only channel 1~11 can be operated. Selection of other channels is not possible.
Pour les produits disponibles aux États-Unis / Canada du marché, seul le canal 1 à 11 peuvent être exploités. Sélection d'autres canaux n'est pas possible.