



## Quick Start...

1

Download the Ring app by visiting [ring.com/app](http://ring.com/app) on your phone or tablet.

2

Select Setup a Device and select Floodlight Cam.

3

Follow the in-app instructions to set up and install your Floodlight Cam.



Download on the  
App Store



GET IT ON  
Google Play



Download from  
Windows Store

For additional help, visit:  
[ring.com/help](https://ring.com/help)

Or give us a call...

[US 1 800 656 1918](tel:18006561918)

[UK 01727 263045](tel:01727263045)

[AU 1 300 205 983](tel:1300205983)

[NZ +64 9 887 9871](tel:6498879871)

[Mexico \(D.F\) 52 55 8526 5445](tel:525585265445)

[Worldwide +1 310 929 7085](tel:13109297085)

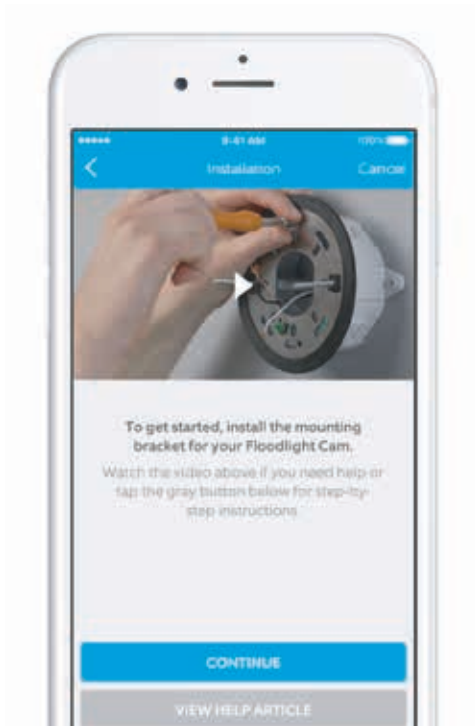
For a list of all our customer  
support numbers, visit:  
[ring.com/callus](https://ring.com/callus)



ring

Installing and  
Setting Up Your  
Ring Floodlight Cam

This is so exciting...



You are about to set up the world's most advanced floodlight.

Start by watching the installation videos in the Ring app.

Next, read this manual and keep it handy during installation.

This manual is for informational purposes only. Working with electricity can be dangerous unless proper safety precautions are taken. If you are not comfortable or are inexperienced with the processes and tools described in this manual, we recommend that you hire a licensed electrician.

## Before you begin

Check out all the stuff in the box.



### Screwdriver

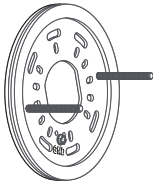
Use the Phillips bit for installing the mounting bracket and the socket bit to tighten the screw cap covers.



### Phillips Bit



### Socket Bit



### Mounting Bracket

This bracket screws into your junction box before attaching to your Floodlight Cam.



### Bracket Screw (5)

Use 2 to 4 of these to attach the supplied bracket to your junction box.



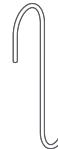
### Wire Nuts (3)

Use these to connect Floodlight Cam's wires to your existing wires.



### Screw Cap Covers (2)

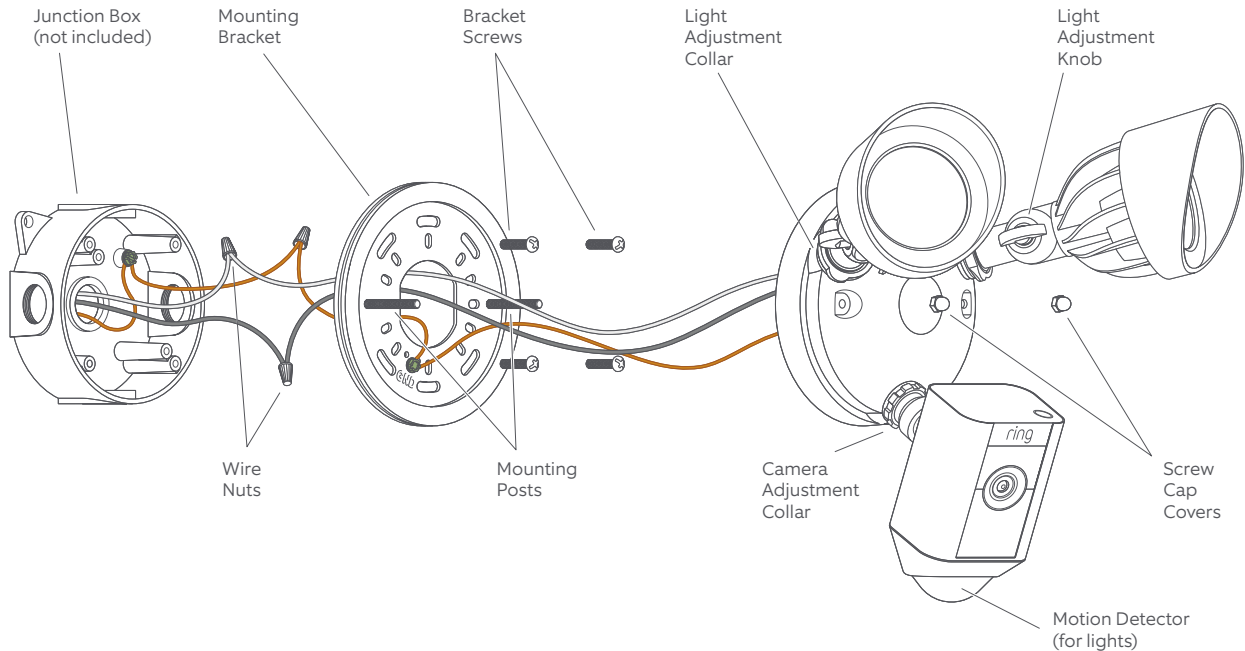
Use these to cover the ends of the posts on the mounting bracket after installation.



### Hook

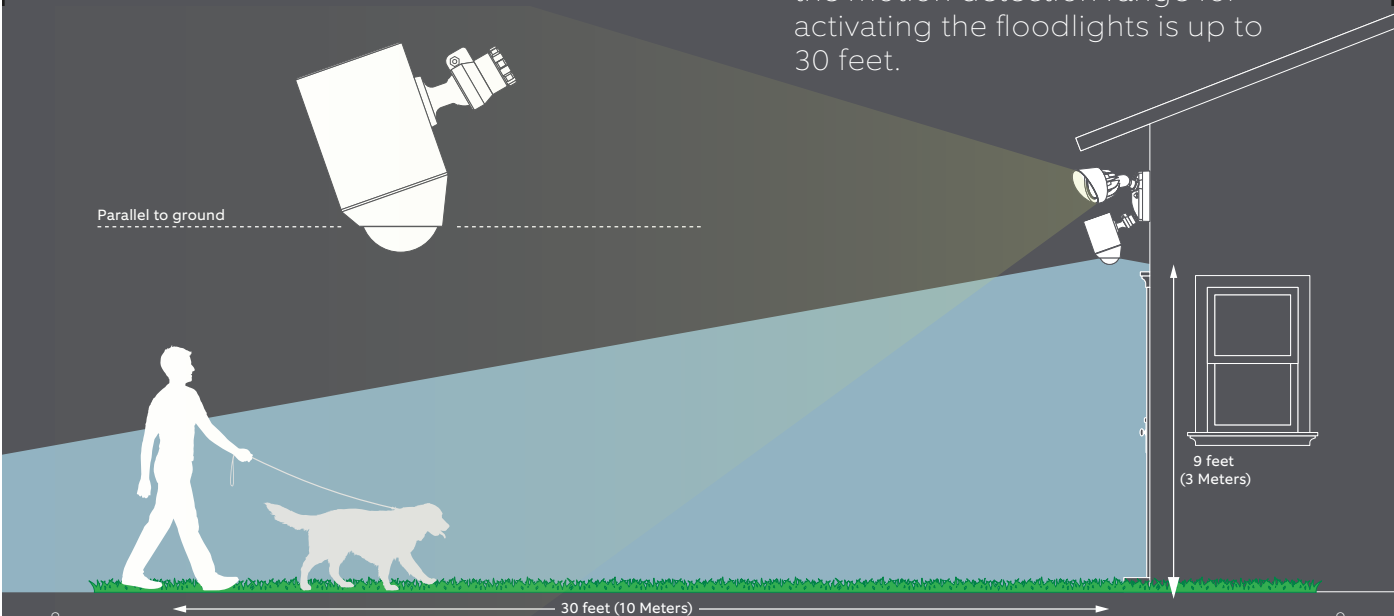
Hang your Floodlight Cam while connecting the wires.

# How it all fits together



## How installation height affects motion detection

When mounted at 9 feet off the ground, with the motion detector parallel to the ground, the motion detection range for activating the floodlights is up to 30 feet.



## Step 1– Shut power off at the breaker

If you don't know where your breaker is or how to turn off power to your floodlight circuit, hire a licensed electrician.



**WARNING:** Risk of electrical shock

- Disconnect power at the fuse or circuit breaker before installing.
- Verify that the supply voltage is correct. Connect fixture to a 100 VAC~240 VAC 50/60 Hz power source.
- Properly ground fixture.
- Always follow code standards when installing wired connections.

**CAUTION:** Risk of fire

- Do not install near combustible or flammable surfaces

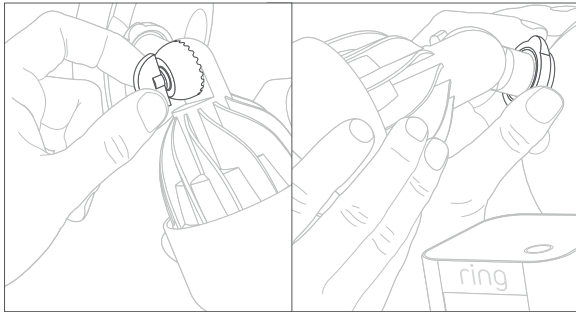
**NOTICE**

- Do not connect this light fixture to a dimmer switch or timer.



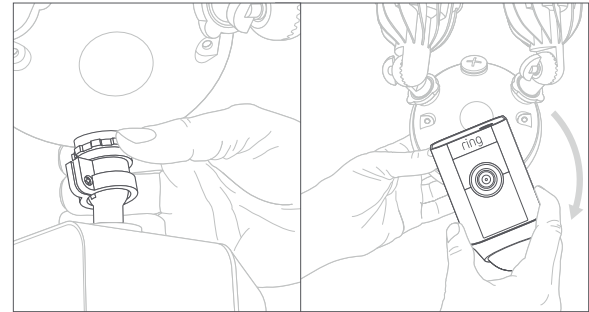
## Step 2 - Prep your Floodlight Cam for installation

**A** Loosen the knobs on the light fixtures to rotate them out of the way and allow access to the mounting screws.



Do not remove your Floodlight Cam from the ball socket on the base.

**B** Rotate the camera 180 degrees since Floodlight Cam ships with the camera upside down on the fixture.

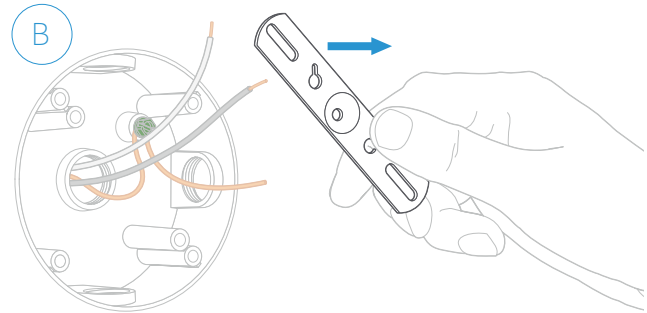
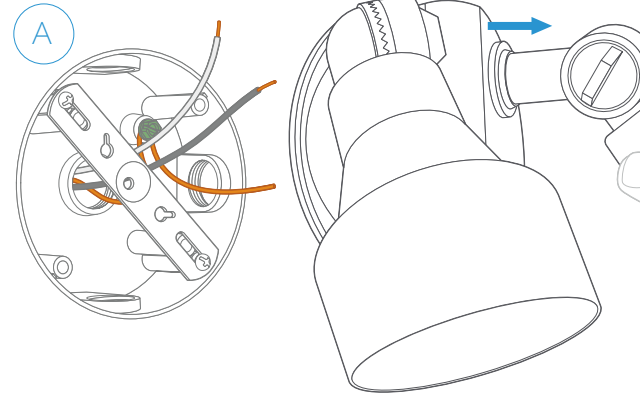


## Step 3 - Remove your existing floodlight

- (A)** With power off at the breaker, remove your existing floodlight from the junction box it's attached to and disconnect the wires.
- (B)** If there is a bracket attached to your junction box, remove that as well.

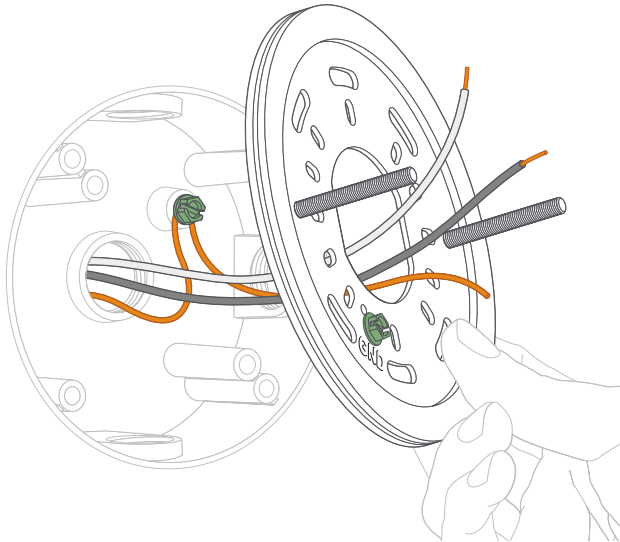
Inspect your junction box to make sure water cannot get into it.

Floodlight Cam must be installed on a junction box. If you don't have an existing junction box, you'll need to hire a licensed electrician to install one.



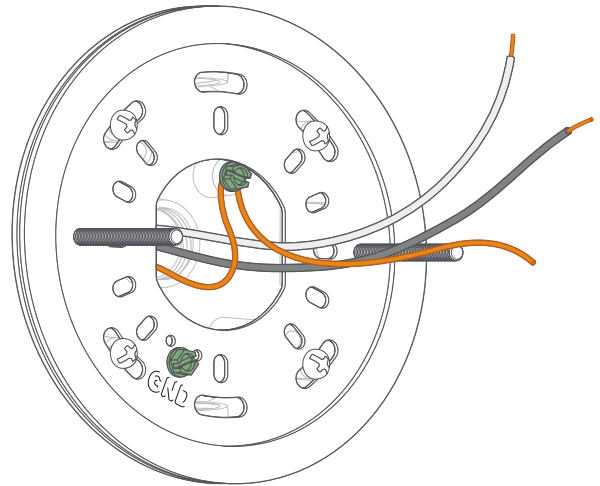
## Step 4 - Install the mounting bracket

Install the mounting bracket with the two posts level with the ground (or your wall if mounting on an overhang).



Make sure your existing wires come through the middle of the bracket.

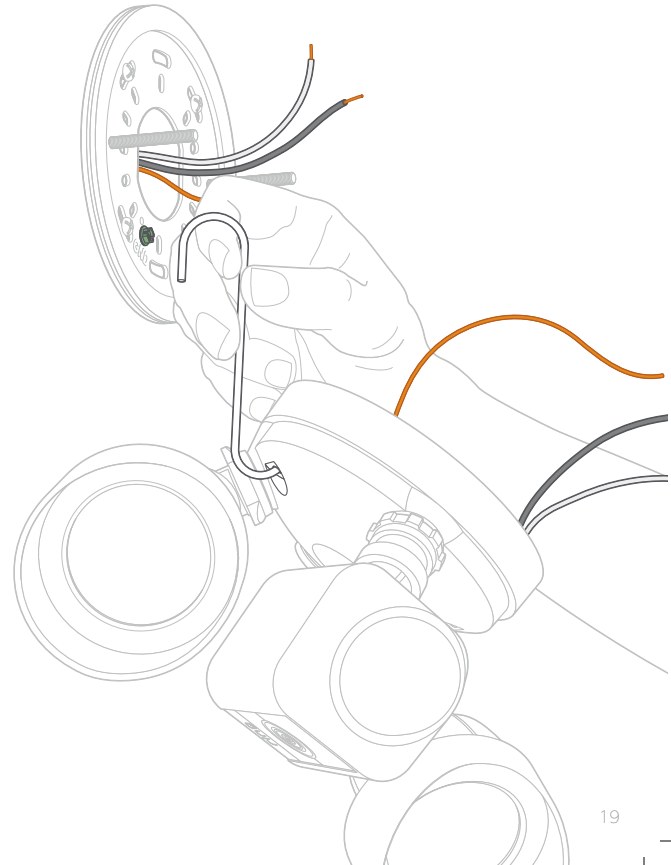
Attach the bracket to your junction box using at least two screws.



## Step 5 - Hang Floodlight Cam

Use the provided hook to hang Floodlight Cam from the bracket while connecting the wires.

Hook one end onto the bracket and the other end in one of the mounting holes on your Floodlight Cam.



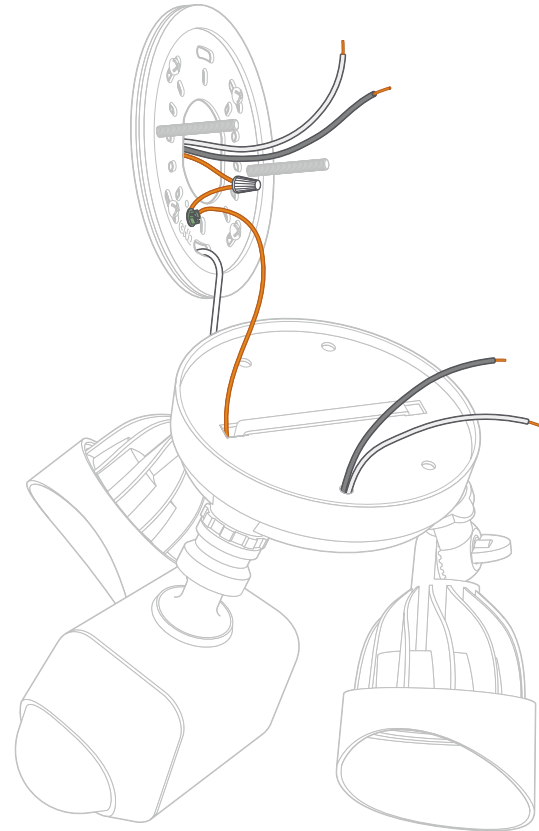
## Step 6 - Connect the ground wire

The copper wire from Floodlight Cam is a ground.

Connect the ground wire to the green ground screw on the bracket **and** the existing ground wire inside your junction box.

Use one of the supplied wire nuts if necessary.

For safety and the proper operation of your Ring Floodlight Cam, the fixture must be properly grounded. If you're not familiar with the methods for properly grounding this type of fixture, consult a licensed electrician.

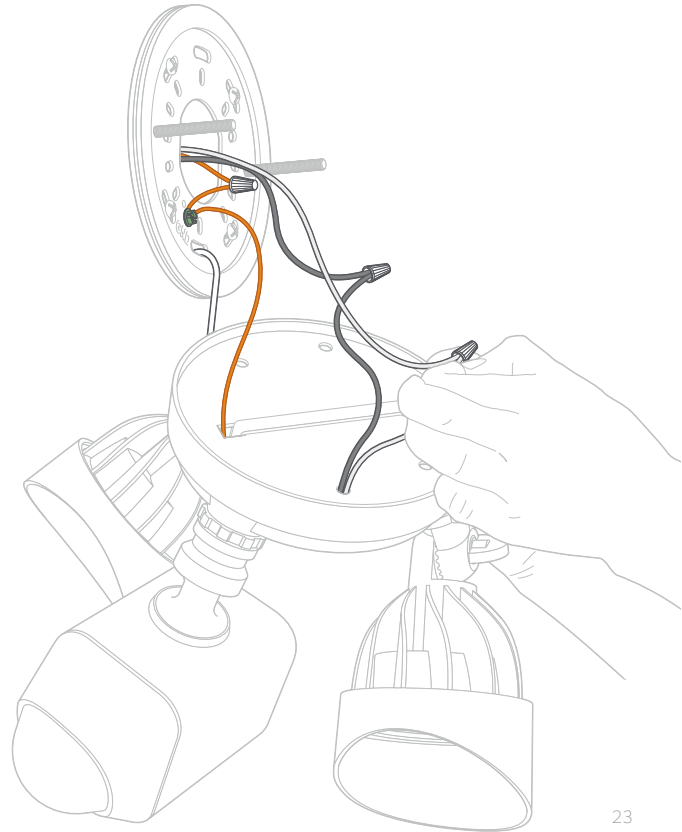


## Step 7 - Connect the power wires

Use a wire nut to connect the white wire coming out of your junction box to the white wire on your Floodlight Cam.

Then, connect the black wire from your junction box to the black wire on Floodlight Cam with another wire nut.

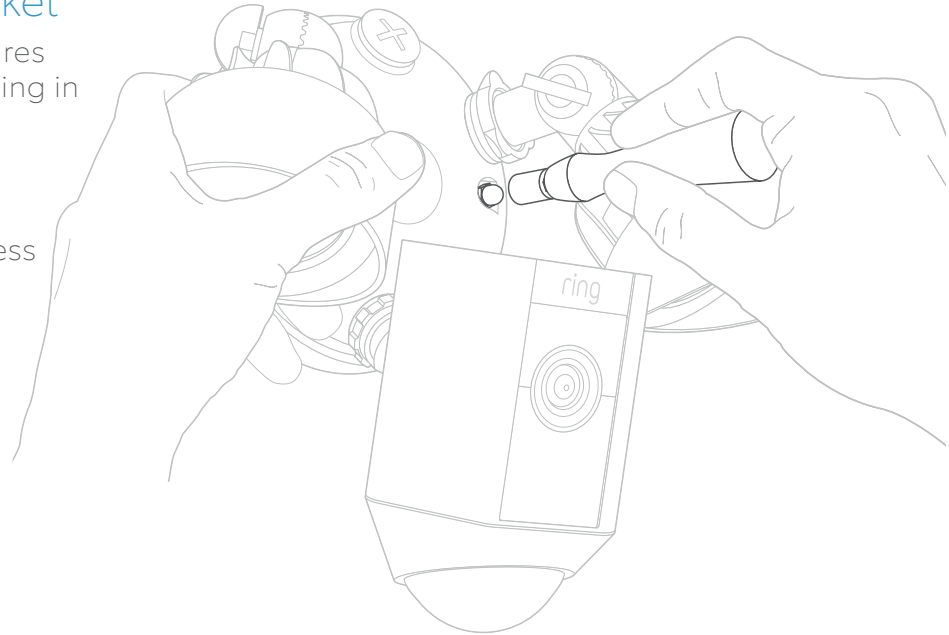
If you don't have clearly colored black and white wires coming out of your junction box, consult a licensed electrician.



## Step 8 - Place Floodlight Cam on the bracket

Carefully push all the wires through the large opening in the bracket.

Align the mounting posts with the holes on Floodlight Cam and press together, securing the screw cap covers with the socket bit.



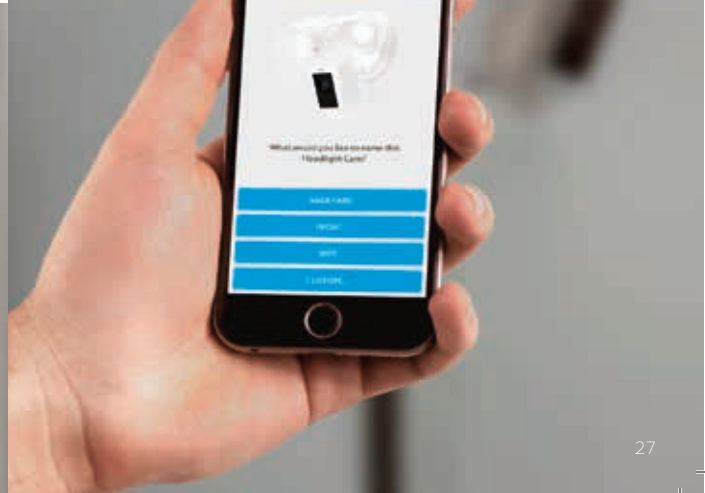
## Step 9 - Restore power at the breaker

After restoring power, the lights will turn on and your Floodlight Cam will begin speaking to you to let you know it's in setup mode.



## Step 10 - Perform the in-app setup

In the Ring app, select Set Up a Device and follow the in-app instructions to connect Floodlight Cam to your Wi-Fi network.





# Troubleshooting Tips

## **Floodlight Cam is not lighting up when I restore power.**

See if there is a light switch controlling power to your floodlight fixture. If so, make sure it is switched on and stays switched on. If your fixture is connected to a timer, you'll need to turn off the timer functionality.

## **Floodlight Cam lights up, but I can't complete the in-app setup.**

First, triple check your Wi-Fi password, since this is the most common reason Floodlight Cam can't complete setup.

Second, check the distance to your Wi-Fi router or access point. If Floodlight Cam is too far from your access point, this will prevent setup from completing. In this instance, our product Chime Pro can help boost your Wi-Fi signal and provide audible alerts from your Floodlight Cam.

Learn more at: [ring.com/chime-pro](http://ring.com/chime-pro)

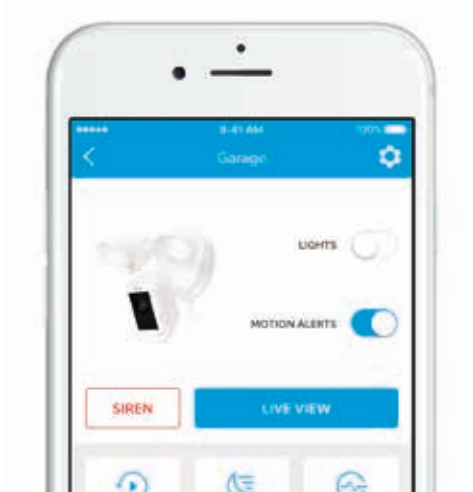


ring

Using your  
Ring Floodlight Cam

## After setup, select your Floodlight Cam in the Ring app

This will bring you to the Device Dashboard, where you can change settings and access various features.



LIGHTS

Manually control the lights.

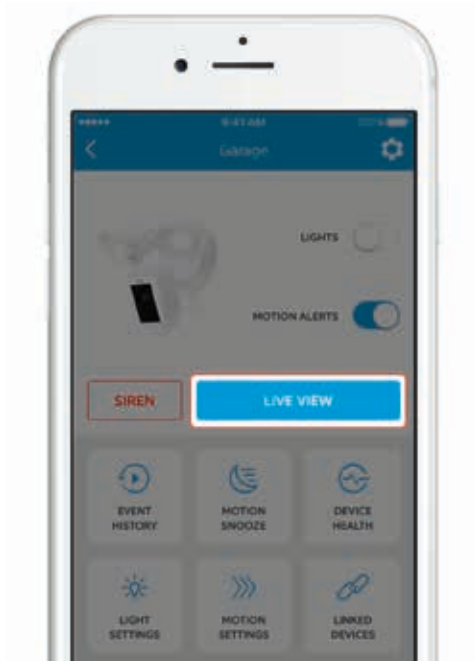
MOTION ALERTS

Toggle notifications for activity in any of the camera's motion zones.





**SIREN**

Trigger the 110 decibel siren. It is loud and will be heard by your neighbors. Use it with care.

Select Live View to open a live video stream



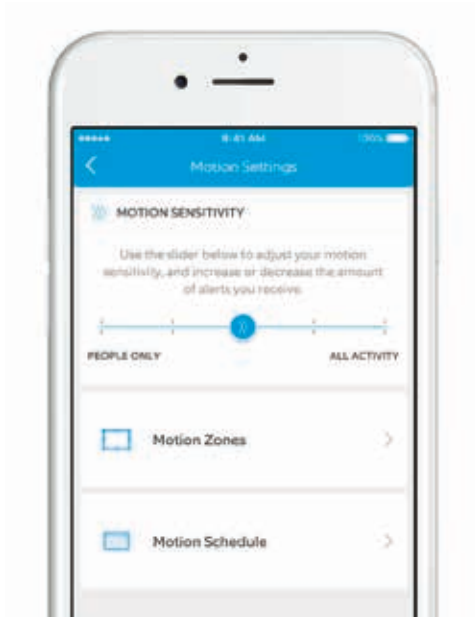
During live video, you can access these features:

-  **Two-way Talk** – Speak to visitors and hear what they have to say.
-  **Siren** – Activate the 110 decibel siren.
-  **Lights** – Turn the lights on and off.
-  **Ring Neighborhoods** – Share suspicious events with your neighbors.



## Select Motion Settings

to customize your motion preferences



### MOTION SENSITIVITY

Allows you to adjust the amount of alerts you receive. Choose People Only to get motion alerts from humans only.

### Motion Zones

Draw up to three custom areas where you'd like to receive motion alerts and trigger the lights.

### Motion Schedule

Schedule times when you don't want to receive motion alerts.

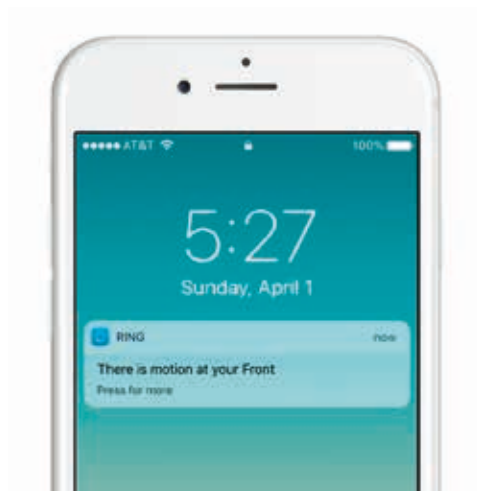


Movement through a motion zone will trigger the camera to record (if you have recording enabled) and send a notification to your mobile device.

Motion in these zones will also trigger the lights to turn on at night. You can further customize the zones that trigger the lights in Light Settings.

If your phone is locked when the camera captures a live event, you will receive a notification on your home screen.

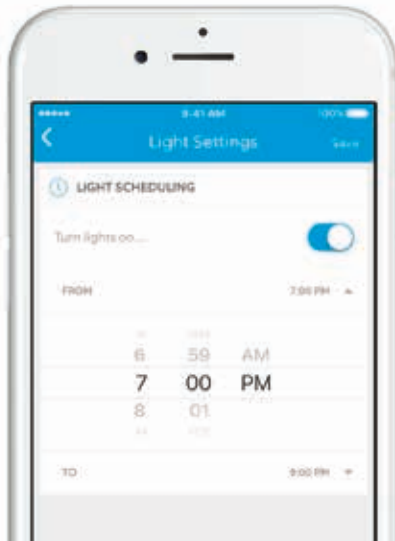
If your phone has a passcode, you'll need to enter it to access the live event.



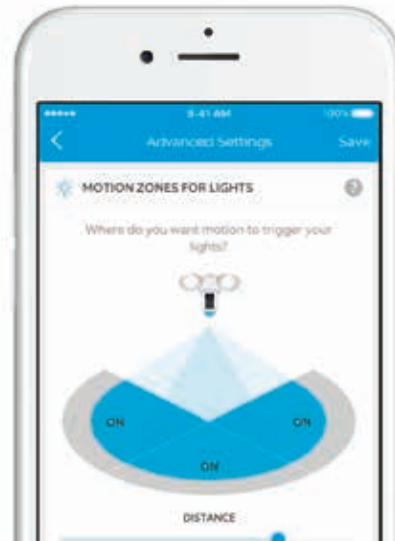


## Select Light Settings

to set a schedule for your lights to stay on



Select Advanced Settings on the Light Settings screen to customize the areas that will trigger the lights and change how long they stay on for.



# Troubleshooting Tips

**The picture on my Floodlight Cam is upside down.**

Double check to see if you rotated the camera on your Floodlight Cam before installing it.

**I'm having issues with video/audio quality and/or load times.**

Issues with video and/or audio are usually related to problems with Wi-Fi signal strength or Internet speed. For an optimal experience, we recommend Internet speeds of at least 1 Mbps. Check your Internet speed by selecting Device Health in the Ring app, then selecting Test Your Wi-Fi.

If your Internet speed is sufficient, then look at Signal Strength in Device Health. If Signal Strength is not Good, you'll need to boost the Wi-Fi signal to your Floodlight Cam, which can be done with our product, Chime Pro.

Learn more at: [ring.com/chime-pro](http://ring.com/chime-pro)

© 2017 Bot Home Automation, Inc. RING, ALWAYS HOME, and CHIME are trademarks of Bot Home Automation, Inc.

Last updated: 03/16/17



# ring

1523 26th St.  
Santa Monica, CA 90404

Hereby, Bot Home Automation, declares that this consumer electronic is in compliance with the essential requirements and other relevant provisions of Directive 1999/5/EC. The declaration of conformity may be consulted at [www.ring.com/DoC.pdf](http://www.ring.com/DoC.pdf).

**This device complies with Part 15 of the FCC Rules. Operation is subject to the following two conditions: (1) This device may not cause harmful interference, and (2) this device must accept any interference received, including interference that may cause undesired operation.**

Use this device in dry rooms only. Do not cover the device while operating. Do not open the housing. Protect this device from sunlight. Do not use this device outdoors. Disconnecting the plug will power the device off. Do not use the device if the plug or housing is defective, there is a risk of electric shock.

Warning: Changes or modifications to this unit not expressly approved by the party responsible for compliance could void the user's authority to operate the equipment.

**This equipment complies with FCC radiation exposure limits set forth for an uncontrolled environment. This equipment should be installed and operated with minimum distance 20 cm between the radiator & your body.**

**This equipment complies with IC RSS-102 radiation exposure limits set forth for an uncontrolled environment. This equipment should be installed and operated with minimum distance 20cm between the radiator & your body.**

**This device and its antenna(s) must not be co-located or operating in conjunction with any other antenna or transmitter. For product available in the USA/Canada market, only channel 1-11 can be operated. Selection of other channels is not possible.**

NOTE: This equipment has been tested and found to comply with the limits for a Class B digital device, pursuant to Part 15 of the FCC Rules. These limits are designed to provide reasonable protection against harmful interference in a residential installation. This equipment generates, uses and can radiate radio frequency energy and, if not installed and used in accordance with the instructions, may cause harmful interference to radio communications.

However, there is no guarantee that interference will not occur in a particular installation. If this equipment does cause harmful interference to radio or television reception, which can be determined by turning the equipment off and on, the user is encouraged to try to correct the interference by one or more of the following measures:

Reorient or relocate the receiving antenna.

Increase the separation between the equipment and receiver.

Connect the equipment into an outlet on a circuit different from that to which the receiver is connected.

Consult the dealer or an experienced radio/TV technician for help.

This Class B digital apparatus complies with Canadian ICES-003.

**This device complies with Industry Canada's licence-exempt RSSs. Operation is subject to the following two conditions:(1)This device may not cause interference; and (2)This device must accept any interference, including interference that may cause undesired operation of the device.**

Allow fixture to cool before handling.

Do not cut any wires with factory installed wire connectors or remove the wire connectors.

Do not install on circuits feeding motor loads such as kitchen appliances, HVAC equipment, washer/ dryer or garage door openers.

Do not install when it is raining

Do not stare directly at the LEDs for more than a few seconds to avoid eye injury.

Do we need to include all the electrical qualifications this light meets? Tech Specifications, Guarantee

FIRE RISK: Do not mount near combustible or flammable surfaces.

Floodlight Cam does not serviceable parts or replaceable LEDs

Floodlight Cam should be installed outdoors to a wall or eaves, not the ground.

Instructions do not cover everything

These instructions do not claim to cover all details or variations in equipment or provide every possible contingency to meet in connection with the installation, operation or maintenance.

Risk of electric shock. Disconnect power at the fuse or circuit breaker before installing.

#### RISK OF ELECTRICAL SHOCK

- Disconnect power at the fuse or circuit breaker before installing.
- Verify that the supply voltage is correct. Connect fixture to a 100 VAC ~ 240 VAC 50/60 Hz power source.
- Properly ground fixture.
- Always install wiring connections in accordance with local code standards.

© 2016 Bot Home Automation, Inc.

RING, ALWAYS HOME, and CHIME are trademarks of Bot Home Automation, Inc.

Par la présente, Bot Home Automation, déclare que ce consommateur électronique est en conformité avec les exigences essentielles et autres

Dispositions pertinentes de la directive 1999/5 / CE. La déclaration de conformité peut être consultée à l'adresse [www.ring.com/DoC.pdf](http://www.ring.com/DoC.pdf).

**Le présent appareil est conforme aux CNR d'Industrie Canada applicables aux appareils radio exempts de licence. L'exploitation est autorisée aux deux conditions suivantes : (1) l'appareil ne doit pas produire de brouillage, et (2) l'utilisateur de l'appareil doit accepter tout brouillage radioélectrique subi, même si le brouillage est susceptible d'en compromettre le fonctionnement.**

L'automatisation peut annuler son approbation pour l'exploitation.

Utilisez cet appareil uniquement dans des locaux secs. Ne couvrez pas l'appareil en cours de fonctionnement. Ne pas ouvrir le boîtier. Protégez cet appareil des rayons du soleil. N'utilisez pas ce

Périphérique à l'extérieur. En débranchant la fiche, l'appareil s'éteindra. Ne pas utiliser l'appareil si la fiche ou le boîtier est défectueux, il ya risque de choc électrique.

Avertissement: Les modifications ou modifications apportées à cet appareil qui ne sont pas expressément approuvées par la partie responsable de la conformité pourraient annuler l'autorisation d'utiliser l'appareil l'équipement.

**Cet équipement est conforme aux limites d'exposition aux rayonnements IC établies pour un environnement non contrôlé. Cet équipement doit être installé et utilisé avec un minimum de 20cm de distance entre la source de rayonnement et votre corps**

REMARQUE: Cet équipement a été testé et reconnu conforme aux limites d'un appareil numérique de classe B, conformément à la partie 15 des règles de la FCC. Ces limites Sont conçus pour fournir une protection raisonnable contre les interférences nuisibles dans une installation résidentielle. Cet équipement génère, utilise et peut rayonner Radiofréquence et, s'il n'est pas installé et utilisé conformément aux instructions, peut causer des interférences nuisibles aux communications radio.

Cependant, rien ne garantit que des interférences ne se produiront pas dans une installation particulière. Si cet équipement cause des interférences nuisibles à la radio ou

Réception de télévision, qui peut être déterminée en éteignant et en éteignant l'appareil, l'utilisateur est encouragé à essayer de corriger Plus de mesures suivantes:

Réorientez ou déplacez l'antenne de réception.

Augmenter la séparation entre l'équipement et le récepteur.

Branchez l'équipement dans une prise sur un circuit différent de celui sur lequel le récepteur est connecté.

Consultez le revendeur ou un technicien radio / TV expérimenté pour obtenir de l'aide.

Cet appareil numérique de classe B est conforme à la norme ICES-003 du Canada.

Cet appareil est conforme aux normes RSS d'Industrie Canada exemptes de licence.

Le fonctionnement est soumis aux deux conditions suivantes

- 1) Cet appareil ne doit pas causer d'interférences et
- 2) Cet appareil doit accepter toute interférence, y compris les interférences pouvant entraîner un fonctionnement indésirable de l'appareil.

**Last updated:** 03/16/17