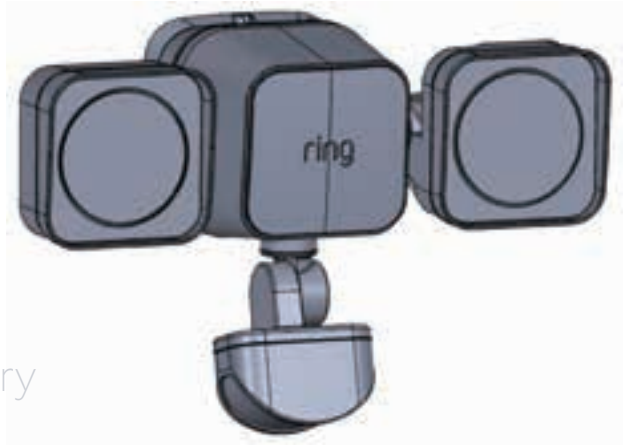


146mm



ring

Beams Battery  
Floodlight

82mm

# 1. Connect your Battery Floodlight.

## Download the Ring app.

The app walks you through setting up and managing your Floodlight.

Search for “Ring” in one of these app stores, or visit: [ring.com/app](https://ring.com/app)



## Set up your Ring Beams Bridge.

The Bridge connects your Ring Beams lights to the rest of your Ring system. Your Bridge must be up and running before you set up your Floodlight.

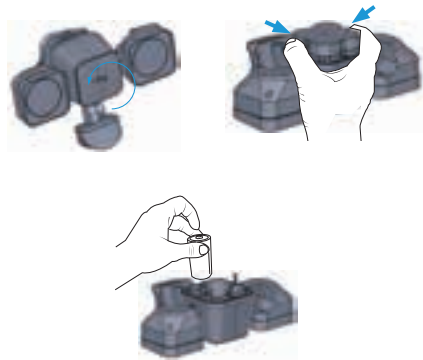
To set up your Bridge, follow the instructions in the Ring app or Bridge user manual.



Insert the batteries.

Twist and pull off the front of the light, then press the side buttons on the battery compartment to open.

Insert four D-cell batteries.

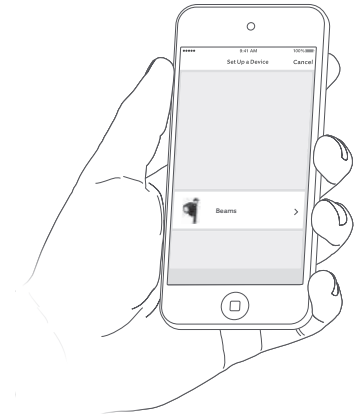


Set up your Floodlight in the Ring app.

In the app, tap **Set Up a Device**.

When prompted, select **Beams** and follow the in-app instructions.

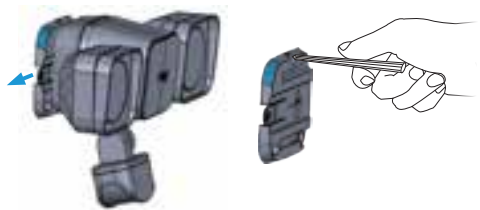
Once setup is complete, slide the battery cover back onto your Floodlight.



## 2. Install your Floodlight.

Press the tab on the side of the base, and slide the base off of your Floodlight.

Use the base as a template to mark the screw holes.

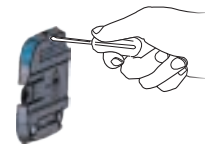


Hold the base against the surface and drive the three mounting screws.

**i** The arrow marked "UP" on the base should point upwards once the base is mounted.

Align your Floodlight with the base and slide it to the left to lock it in.

**i** The motion sensor is adjustable. Try various angles for the best performance.



For additional help, visit: [ring.com/help](https://ring.com/help)

Or give us a call...

**US 1 800 656 1918**

---

**Canada 1 855 300 7289**

---

**Worldwide +1 310 929 7085**

---

For a list of all our customer support numbers, visit:  
[ring.com/callus](https://ring.com/callus)

To review your warranty coverage, please visit [www.ring.com/warranty](https://www.ring.com/warranty).

Patents: [www.ring.com/patents](https://www.ring.com/patents)

© 2018 Ring LLC or its affiliates.

RING, ALWAYS HOME, and all related logos are trademarks of Ring LLC or its affiliates.

Last updated: 09/18/18

This device complies with Part 15 of the FCC Rules. Operation is subject to the following two conditions: (1) this device may not cause harmful interference, and (2) this device must accept any interference received, including interference that may cause undesired operation. Changes or modifications not expressly approved by the party responsible for compliance could void the user's authority to operate the equipment.

NOTE: This equipment has been tested and found to comply with the limits for a Class B digital device, pursuant to Part 15 of the FCC Rules. These limits are designed to provide reasonable protection against harmful interference in a residential installation. This equipment generates, uses and can radiate radio frequency energy and, if not installed and used in accordance with the instructions, may cause harmful interference to radio communications. However, there is no guarantee that interference will not occur in a particular installation. If this equipment does cause harmful interference to radio or television reception, which can be determined by turning the equipment off and on, the user is encouraged to try to correct the interference by one or more of the following measures:

- Reorient or relocate the receiving antenna.
- Increase the separation between the equipment and receiver.
- Connect the equipment into an outlet on a circuit different from that to which the receiver is connected.
- Consult the dealer or an experienced radio/TV technician for help.

FCC RF warning statement:

The device has been evaluated to meet general RF exposure requirement.

Caution: This Transmitter must be installed to provide separation distance of at least 20cm from all persons.

FCC / IC RF Radiation Déclaration d'exposition

Attention: Cet émetteur doit être installé pour fournir une distance de séparation d'au moins 20 cm de toute personne.

Industry Canada

This device complies with Industry Canada licence-exempt RSS standard(s): Operation is subject to the following Two conditions:

(1) this device may not cause interference, and (2) this device must accept any interference, including interference that may cause undesired operation of the device.

Le présent appareil est conforme aux CNR d'Industrie Canada applicables aux appareils radio exempts de licence. L'exploitation est autorisée aux deux conditions suivantes :

(1) l'appareil ne doit pas produire de brouillage, et (2) l'utilisateur de l'appareil doit accepter tout brouillage radioélectrique subi, même si le brouillage est susceptible d'en compromettre le fonctionnement.