

ring

Door View Cam



108.0 mm

118.0 mm

Before you begin

Check out how it all fits together.

1. Front case

2. Front cover

3. Viewer lens
(not pictured)

4. PIR button

5. Viewer tube

6. Rear cover

108.0 mm

236.0 mm

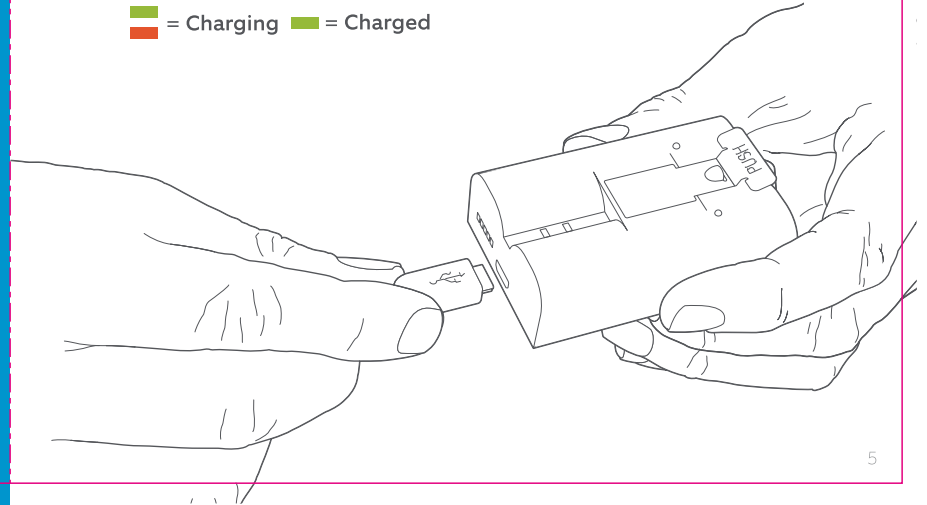
1. Charge the battery.

Charge the provided battery.

First, fully charge the battery by plugging it into a USB port using the provided orange cable.

The battery is fully charged when just one LED is lit.

 = Charging  = Charged



2. Set up your Door View Cam in the Ring app.

Download the Ring app.



The app walks you through setting up and managing your Door View Cam.

Download it on your iOS or Android device.

Grab your Wi-Fi password.

You'll need it later to set up your Door View Cam. Write it down below so it's handy when you need it:

3. Remove your existing peephole.

Clean up any paint.

You may have to remove excess paint in order to unscrew your peephole (if not, skip ahead).

Check for paint on or around your peephole, both indoors and outdoors. Use the sharp side of the included tool to carefully remove any paint covering the edge or the slots.



Remove indoor half.

On the indoor side, place the flat edge of the included tool in the slots and rotate counter-clockwise to unscrew the peephole.

Once it's loose enough, you can use your fingers to finish unscrewing it and remove it completely.



You may have to secure the outdoor side of the peephole while unscrewing the indoor portion to keep it from spinning.

Remove outdoor half.

The outdoor portion should slide right out. If not, check again for paint or other obstructions around the lens.

If this isn't your forever home, store the peephole in a safe place in case you have to re-install it later.



4. Install your Door View Cam.

You *might* need the plastic adapter.

Let's find out for sure...

Try to place the adapter into the hole on the inside of your door to see if it fits.

If it fits, insert it all the way into the hole.

If it doesn't fit, that's fine. You don't need it.





Place the outdoor assembly.

From the front side of your door, feed the metal tube and black wire through the hole until your Door View Cam is flush with the door.

Remove the rear cover.


Grasp the thin edge of the indoor assembly body, and pinch the cover at the indentations. Pull to separate. You can set the cover aside for now.





Place the indoor assembly.

Next, carefully slide the indoor assembly onto the metal tube until it's flush with the door, making sure the outdoor assembly isn't pushed out of your door.

 You may have to hold the outdoor assembly in place to keep it from falling out; if you've got a wide door or short arms, grab a partner.

Remove the connector cable.

We tucked it into the metal tube for safe travels, but now it's time to take it out.

Grasp either side of the exposed plastic tab, then delicately draw it out of the tube until there's no more slack left.



Join indoor and outdoor assemblies.

With the cable out of the way, place the plastic tightening nut into the hole and over the metal tube.

Twist clockwise to tighten. You can use the included tool, or your fingers.

Once secure, check the outdoor assembly. It may rotate slightly while tightening, so make sure it's level.



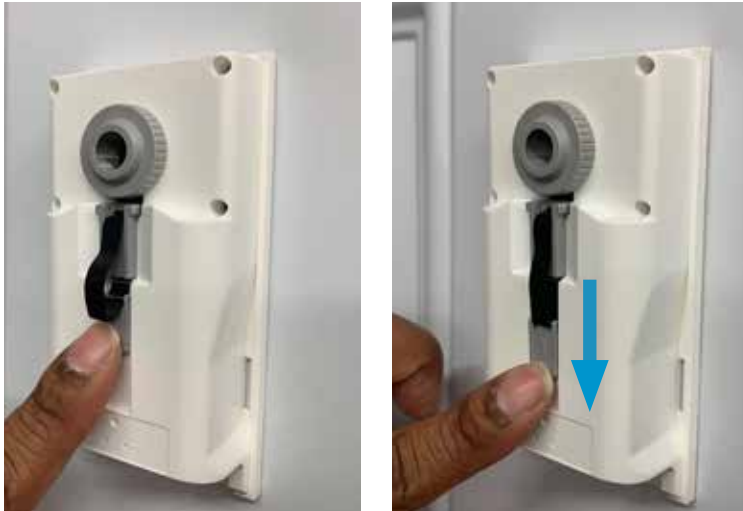
Plug in the connector.

Gently pull the cable taught, then press the connector into the port on the indoor assembly.



Secure the cable.

Guide the plastic tab with the arrow into the channel, and slide it down to secure the remaining slack in the cable.



Insert the battery.

Slide the charged battery into the bottom of your Door View Cam until it clicks into place (don't put the cover back on just yet).



Complete setup in the Ring app.

In the Ring app, select **Set Up a Device** and follow the in-app instructions.

Blue light flashing?

If the light on the front of your Door View Cam is flashing after setup, it's updating its software.

Do not remove the battery from your Door View Cam while the light is flashing!

Cover it up.

Once in-app setup is complete, place the cover back onto your Door View Cam until it clicks. You're all set!



For additional help, visit: ring.com/help

Or give us a call...

US 1 800 656 1918

Canada 1 855 300 7289

Worldwide +1 310 929 7085

For a list of all our customer support numbers, visit:
ring.com/callus

To review your warranty coverage, please visit www.ring.com/warranty.

Patents: www.ring.com/patents

© 2019 Ring LLC or its affiliates.

RING, ALWAYS HOME, and all related logos are trademarks of Ring LLC or its affiliates.

Last updated: 03/13/19

JSBK00622



ring 1523 26th St.
Santa Monica, CA 90404

This device, the Ring Door View Cam, complies with Part 15 of the U.S. Federal Communications Commission Rules. Operation is subject to the following two conditions: (1) this device may not cause harmful interference, and (2) this device must accept any interference received, including interference that may cause undesired operation. Modifications to this equipment not authorized by Ring LLC may void its approval for operation. The radio transmitter in this device has been approved under the FCC and IC numbers shown on the device. Other digital circuitry in this device has been approved under a supplier's declaration of conformity (SDoC).

Warning: Changes or modifications to this unit not expressly approved by the party responsible for compliance could void the user's authority to operate the equipment.

To comply with FCC guidelines limiting exposure to radio frequency energy, this equipment should be installed and operated with minimum distance 20 cm between the radiator and your body and must not be co-located or operated in conjunction with any other antenna or transmitter.

NOTE: This equipment has been tested and found to comply with relevant FCC requirements, pursuant to Part 15 of the FCC Rules. These limits are designed to provide reasonable protection against harmful interference in a residential installation. This equipment generates, uses and can radiate radio frequency energy and, if not installed and used in accordance with the instructions, may cause harmful interference to radio communications. However, there is no guarantee that interference will not occur in a particular installation. If this equipment does cause harmful interference to radio or television reception, which can be determined by turning the equipment off and on, the user is encouraged to try to correct the interference by one or more of the following measures:

Reorient or relocate the receiving antenna.

Increase the separation between the equipment and receiver.

Connect the equipment into an outlet on a circuit different from that to which the receiver is connected.

Consult the dealer or an experienced radio/TV technician for help.

Additional information regarding the Ring Door View Cam FCC equipment authorization(s) can be found at: ring.com/regulatory

To contact Ring about the device's FCC equipment authorization, please write us at the address shown below or contact us using the following address: legal@ring.com

Use the provided battery and follow instructions in the installation manual for charging and inserting the battery. Replace only with Lithium-Ion batteries designed specifically for use in this product. Do not dispose of batteries in fire. Batteries should be recycled or disposed of as per state and local guidelines.

Ring
1523 26th St.
Santa Monica, CA 90404

© 2019 Ring LLC or its affiliates.

Ring and all related logos are trademarks of Amazon.com, Inc. or its affiliates.



This device complies with part 15 of the FCC Rules.

Operation is subject to the following two conditions:

- (1) This device may not cause harmful interference, and**
- (2) this device must accept any interference received, including interference that may cause undesired operation.**

Notice:

Any changes or modifications not expressly approved by the party responsible for

compliance could void your authority to operate the equipment.

NOTE: This equipment has been tested and found to comply with the limits for a Class

B digital device, pursuant to part 15 of the FCC Rules. These limits are designed to

provide reasonable protection against harmful interference in a residential installation.

This equipment generates, uses and can radiate radio frequency energy and, if not

installed and used in accordance with the instructions, may cause harmful

interference to radio communications. However, there is no guarantee that

interference will not occur in a particular installation. If this equipment does cause

harmful interference to radio or television reception, which can be determined by

turning the equipment off and on, the user is encouraged to try to correct the

interference by one or more of the following measures:

- Reorient or relocate the receiving antenna.**
- Increase the separation between the equipment and receiver.**
- Connect the equipment into an outlet on a circuit different from that to which the receiver is connected.**
- Consult the dealer or an experienced radio/ TV technician for help.**